

System Check_Head_6MHz

DUT: CLA6-1017

Communication System: CW; Frequency: 6 MHz

Medium: HSL_6_240703 Medium parameters used: $f = 6$ MHz; $\sigma = 0.727$ S/m; $\epsilon_r = 54.503$; $\rho = 1000$ kg/m³

Ambient Temperature : 23.7 °C; Liquid Temperature : 22.7 °C

DASY5 Configuration:

- Probe: EX3DV4 - SN3931; ConvF(21.05, 21.05, 21.05) @ 6 MHz; Calibrated: 2023/10/24
- Sensor-Surface: 1.4mm (Mechanical Surface Detection)
- Electronics: DAE4 Sn1707; Calibrated: 2023/12/6
- Phantom: ELI V4.0; Type: QD OVA 001 Bx; Serial: 1164
- Measurement SW: DASY52, Version 52.10 (4);SEMCAD X Version 14.6.14 (7501)

Pin=1000mW/Area Scan (81x81x1): Interpolated grid: dx=1.500 mm, dy=1.500 mm

Maximum value of SAR (interpolated) = 0.205 W/kg

Pin=1000mW/Zoom Scan (5x5x7)/Cube 0: Measurement grid: dx=8mm, dy=8mm, dz=5mm

Reference Value = 14.89 V/m; Power Drift = 0.05 dB

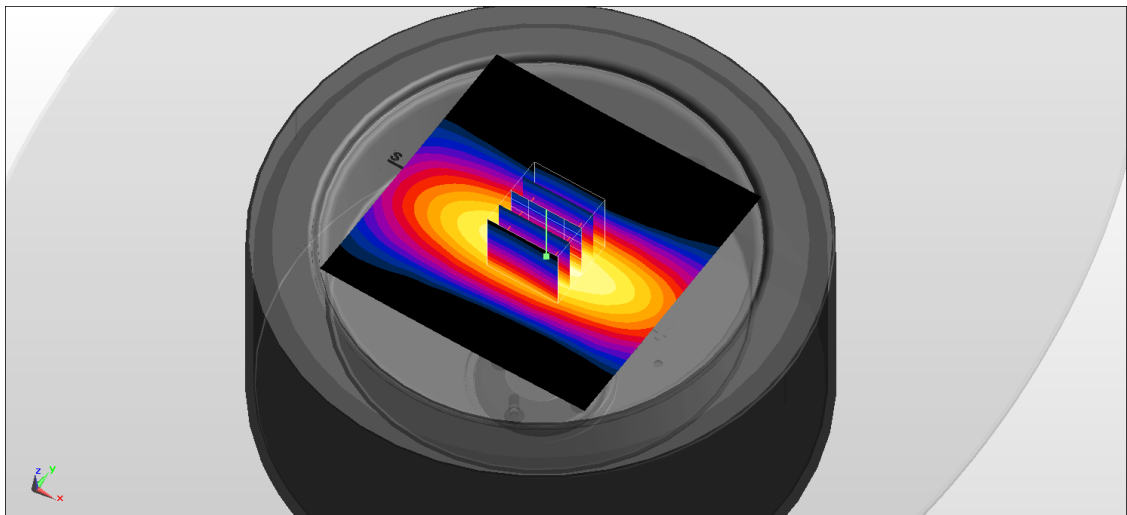
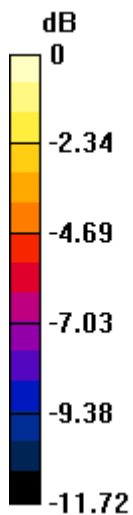
Peak SAR (extrapolated) = 0.285 W/kg

SAR(1 g) = 0.159 W/kg; SAR(10 g) = 0.100 W/kg

Smallest distance from peaks to all points 3 dB below = 16 mm

Ratio of SAR at M2 to SAR at M1 = 56.4%

Maximum value of SAR (measured) = 0.232 W/kg



0 dB = 0.232 W/kg = -6.35 dBW/kg