



Logitech® Harmony Touch

Setup Guide

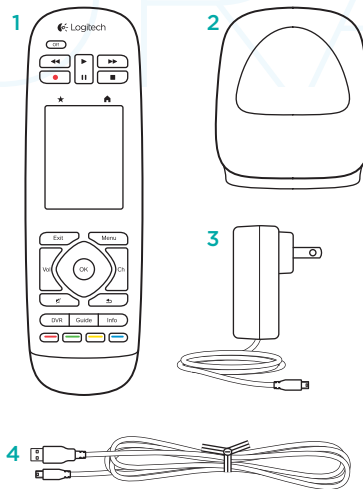
Guide d'installation

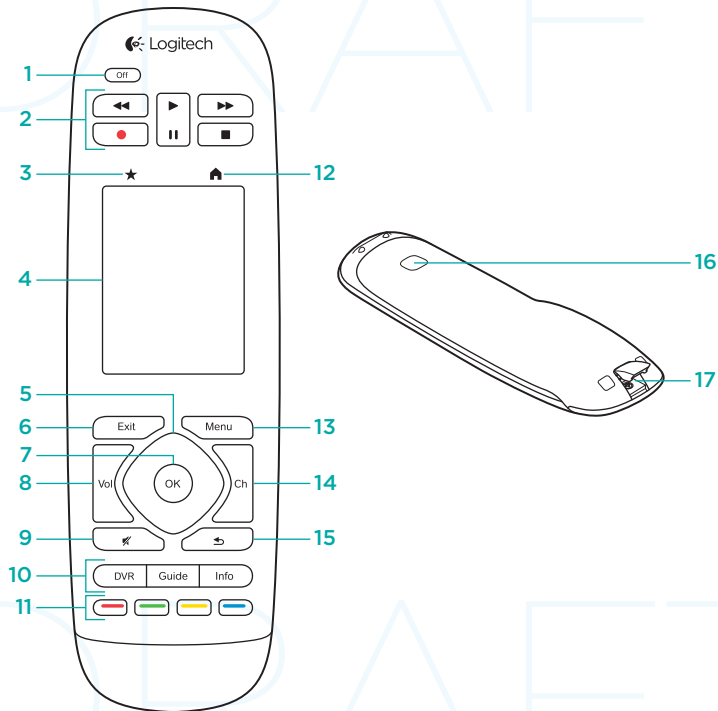
**COVER**  
**FPO**

English . . . . .	3	Español . . . . .	39
Français . . . . .	21	Português . . . . .	57
<b>www.logitech.com/support</b>  . . . . .			75

## Package contents

1. Remote
2. Charging cradle
3. AC Adapter
4. USB cable

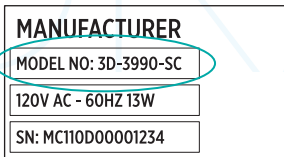




## Know your product

- 1. Off button** Power off your entire system.
- 2. Video controls** Perform standard AV functions.
- 3. Favorites** Display the Favorites screen.
- 4. LCD touch screen** View, launch, and edit activities and favorites, use the on-screen number pad, change settings, and get help.
- 5. Directional navigation** Press a pad corner for desired direction within a list or menu.
- 6. Exit** Leave a listing or menu.
- 7. OK** Press to select an option.
- 8. Volume control** Press the top to increase volume and the bottom to lower it.
- 9. Mute**
- 10. Satellite/Cable controls** DVR opens a record/play menu. Guide opens satellite/cable program listings. Info provides program information.
- 11. Color-coded navigation buttons** Perform cable, satellite, or Blu-ray functions.
- 12. Home** Display the Home screen.
- 13. Menu** Display a menu.
- 14. Channel control** Press the top for channel up and the bottom for channel down.
- 15. Previous** Press for previous channel.
- 16. IR window** Transfer device control commands (IR learning) from another remote.
- 17. Micro-USB port** Connect the Harmony remote to a PC to access My Harmony and receive power while updating.

## Set up your product

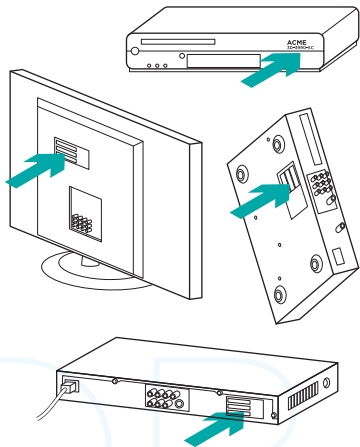


To set up your new Harmony remote, you will need to do the following:

1. Gather the manufacturer name and model number of your devices.
2. Note how your home entertainment system devices are wired and connected together.
3. Fill in your home entertainment system information using the blank form.

### Do I really need all my model numbers?

Yes. The setup process will ask for all your model numbers so the remote can know how to control your devices. It's better to gather them all at once rather than needing to go back and forth from your computer to your devices.



### Where do I find my model numbers?

Most devices have them somewhere on the back or bottom, sometimes on a label. Be sure to write the number down accurately because entering an incorrect or incomplete number may cause you trouble.

### What is an input?

Your TV can display video from multiple home entertainment devices—a cable/satellite box, a DVD player, a game console, etc. You select a different input to watch each of these devices. The input also matches the connector on the back of your TV. Your Harmony remote will need to understand what device is connected to what input to best control your system. (Some TVs use the term “source” instead of “input.”)

If you're using an audio video receiver, it also has inputs—for video and sound. Understanding these connections will be important to complete setup. Is your sound system switching both video and sound for your setup, or just sound? The Harmony software setup will ask you questions about this.

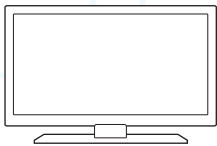
**Note:** Some older audio receivers have only inputs for sound, not video.

### How do I gather my system information?

Use the forms on the following pages to record the information about your home entertainment system.

**Note:** If you have more than 6 devices, we have an expanded form online you can use. Go to [www.logitech.com/support/harmonytouch](http://www.logitech.com/support/harmonytouch)

If your home entertainment system uses only a TV for sound, use this form.



**TV Manufacturer**

Model # \_\_\_\_\_

**What's connected?**

Input \_\_\_\_\_

Input \_\_\_\_\_

Input \_\_\_\_\_

Input \_\_\_\_\_



**Cable/Satellite Box Manufacturer**

Model # \_\_\_\_\_



**DVD/BluRay Player Manufacturer**

Model # \_\_\_\_\_



**Other Device Manufacturer**

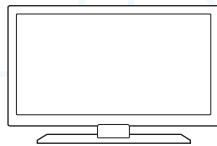
Model # \_\_\_\_\_



**Other Device Manufacturer**

Model # \_\_\_\_\_

If your home entertainment system uses a TV and an AV receiver, use this form.



**TV Manufacturer**

Model # \_\_\_\_\_

**What's connected?**

Input \_\_\_\_\_

Input \_\_\_\_\_

Input \_\_\_\_\_

Input \_\_\_\_\_



**AV Receiver Manufacturer**

Model # \_\_\_\_\_

**What's connected?**

Input \_\_\_\_\_

Input \_\_\_\_\_

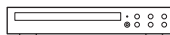
Input \_\_\_\_\_

Input \_\_\_\_\_



**Cable/Satellite Box Manufacturer**

Model # \_\_\_\_\_



**DVD/BluRay Player Manufacturer**

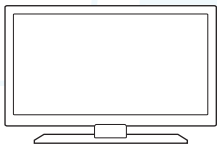
Model # \_\_\_\_\_



**Other Device Manufacturer**

Model # \_\_\_\_\_

Example home entertainment system :



**TV Manufacturer**

*Vizio*  
Model # L32 HDTV 10A

**What's connected?**

Input HDMI1 used by cable box

Input HDMI2 used by DVD/BluRay

Input HDMI3 used by Xbox360

Input \_\_\_\_\_



**Cable/Satellite Box Manufacturer**

*Scientific Atlanta*  
Model # Explorer 3100



**DVD/BluRay Player Manufacturer**

*Pioneer*  
Model # DV-414



**Other Device Manufacturer**

*Microsoft*  
Model # Xbox360



**Other Device Manufacturer**

Model # \_\_\_\_\_

**Check your work**

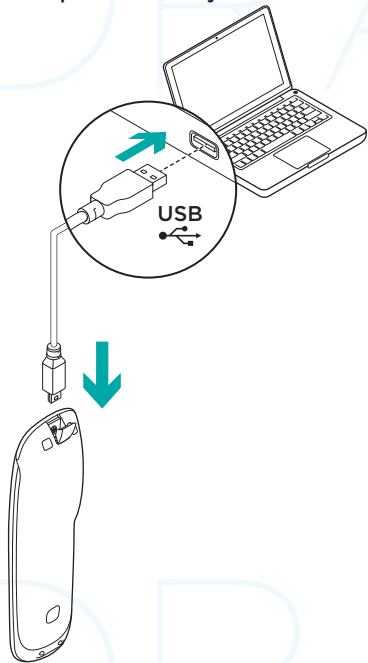
Before you proceed, make sure you have correctly recorded all your inputs. To check your work:

1. Turn on all your entertainment devices.
  - Note: If you are using a AV receiver, use your receiver's remote to cycle through the video inputs.
2. Using your original TV remote, cycle through your TV's inputs. Most TV remotes have an input or source button.
  - What input is listed on your TV? Often it will display text showing the input.
  - What video content do you see on your TV. Is it your cable/satellite box, your DVD player, etc.?

4. Check your form and make sure you recorded the correct input for that device.
5. If it's different, write the correct information on the form.

When you've gone through all your TV's inputs and made sure you have recorded them correctly on the form, you're ready to set up the Harmony remote.

## Set up the Harmony remote

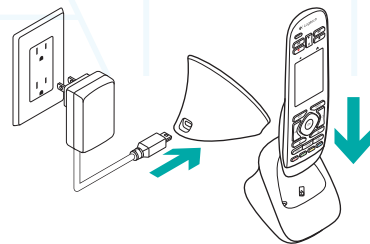


1. Launch a web browser. Go to [www.myharmony.com](http://www.myharmony.com).
2. Sign in.
  - If this is your first Harmony remote, click “Create an Account.”
  - If you already have a MyHarmony account, enter your username and password, and then click “Sign in.”
3. Follow the on-screen instructions to:
  - Create an account, or log into your existing account.
  - When prompted, connect the Harmony remote to your computer using the micro-USB cable.
  - Add devices (up to 15).
  - Create activities (e.g., “Watch TV”).
  - Set up your favorite channels (up to 50).
4. When prompted, click “Sync.”
5. Disconnect the Harmony remote from the computer after syncing.

## Guidelines for creating an activity

- Choose the devices involved in the activity.
- If applicable, specify which device changes channels and controls volume.
- Specify the inputs used and how they are selected.
- Answer additional questions unique to your system.

## Charge the battery

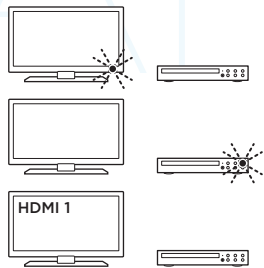
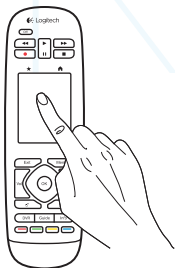


If the battery icon on the touch screen is red, showing low battery power, charge the battery. A full charge takes about 2 hours. A charge lasts about 3 days. Charging time and battery life may vary based upon use and conditions.

To charge the battery:

1. Connect the charging cradle to an AC outlet using the AC power adapter.
2. Place the Harmony remote in the charging cradle. A battery icon will appear on the display.

## Use your product



### Activities

The Harmony remote is an activity-based, universal remote that controls many types of entertainment devices using line-of-sight, infrared signals.

An activity is something you do with your entertainment system, such as watching TV, viewing a movie, or listening to music. The Harmony remote simplifies those activities. A single press of the touch screen will turn on the necessary devices and select the required inputs.

For example, selecting the “Watch TV” activity (which you create) will turn on your TV, cable box, and AV receiver while selecting the right inputs. All unused devices are switched off. The Harmony remote is now ready to run the devices needed for you to watch a show.

Your Harmony Touch main screen contains buttons and touch elements that help you navigate the remote’s functions.



### Buttons

- ★ **Favorites** Takes you to your favorites channels.
  - 🏠 **Home** Returns to the main Home screen, with a list of all activities and settings.
- ### Touch screen
- From the touch screen, you can select the following functions:
- ◀ **Back** Takes you to the previous screen.
  - ❓ **Help** Starts interactive self-help.
  - ☰ **Devices** Takes you to a list of all your devices that you have set up in MyHarmony.com.



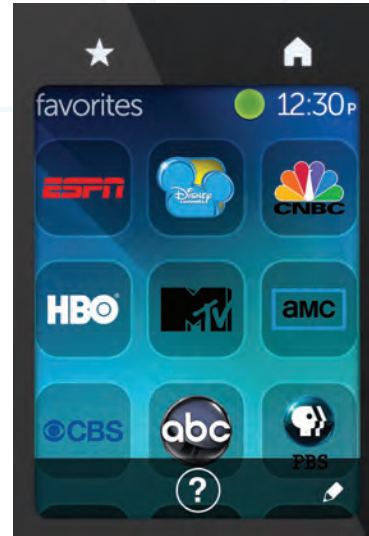


### Select activities

1. Tap the touch screen to activate it.
2. From the Home screen, swipe left or right to view activities.
3. Tap an activity to launch it. Commands associated with the activity appear.

**Note:** Swipe up and down to navigate commands. Tap to select a command. Only the activities you create are available.

To return to the home screen, press the **Home** button.



### Select Favorites

1. Tap the touch screen to activate it.
2. Tap the Favorites icon to launch the Favorites screen.
3. Swipe up and down to navigate your favorites.
4. Tap to select a favorite channel.

## Use Help

Obstacles (like a person walking in front of the remote) or too much distance between you and your TV can interfere with the signals your remote sends, causing it to go out of synch with your devices. Or maybe a device doesn't power on or off or switch inputs correctly. Use the remote's interactive self-help to resolve issues like these.

To use help:

1. On the touch screen, press Help (question mark icon).
2. Answer the questions, follow the instructions, and wait for the remote to fix the problem:

## Change settings

1. From the Home screen, swipe left until you see the Settings option.
2. Tap to select settings.
3. Some available settings include:
  - Changes to activities or devices
  - Set brightness
  - Set timeout
  - Set time
4. Follow the on-screen instructions.

## Add or change a device

1. Go to [www.myharmony.com](http://www.myharmony.com) and log in.
2. Click "Devices."
3. Click "Add a Device." To change a device, click the image of the device, and then click "Change Device Settings."
4. Follow the on-screen instructions.
5. Update the activities that use the device.
6. Connect the Harmony remote to your computer using the micro-USB cable.
7. When prompted, click "Sync."
8. Disconnect the Harmony remote from the computer after syncing.

**Note:** The Harmony remote supports up to 15 devices.

Deleting a device affects any activity that uses the device.

## Add or change an activity

1. Go to [www.myharmony.com](http://www.myharmony.com) and log in.
2. Click "Activities."
3. Click "Add an Activity." To change an activity, click the image of the activity, and then click "Change Your Settings."
4. Follow the on-screen instructions.
5. Connect the Harmony remote to your computer using the micro-USB cable.
6. When prompted, click "Sync."
7. Disconnect the Harmony remote from the computer after syncing.

## Visit Product Central

There's more information and support online for your product. Take a moment to visit Product Central to learn more about your new Harmony remote.

Browse online articles for setup help, usage tips, or information about additional features.

Connect with other users in our Community Forums to get advice, ask questions, and share solutions.

At Product Central, you'll find a wide selection of content:

- Tutorials
- Troubleshooting
- Support community
- Software downloads
- Online documentation
- Warranty information
- Spare parts (when available)

Go to [www.logitech.com/support/harmonytouch](http://www.logitech.com/support/harmonytouch)

## Troubleshooting

### Basic Troubleshooting Tips

Use Help (question mark) on the touch screen to resolve issues.

### The Harmony remote does not communicate with MyHarmony

- Check the USB cable and its connection.
- Do not use a USB hub.
- Try another USB port.
- Disable pop-up blockers.
- Close your browser and restart your computer.

- Restart the remote: Press and hold the Off button for 15 seconds or until the Logitech Logo appears on the display.

### Device not listed on MyHarmony or the Harmony remote does not have a command

- Check the manufacturer name and model number entries.
- Use the Harmony remote IR learning feature.

For more help go to [www.logitech.com/support/harmonytouch](http://www.logitech.com/support/harmonytouch)

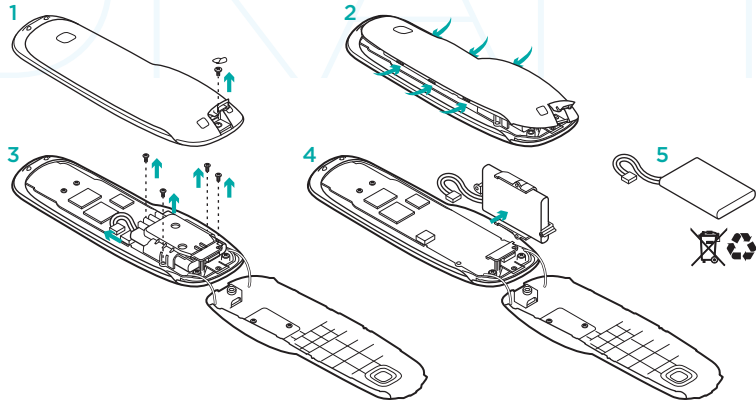
---

## What do you think?

Please take a minute to tell us.  
Thank you for purchasing our product.

[www.logitech.com/ithink](http://www.logitech.com/ithink)

## Battery disposal at product end of life



1. Open the USB door and remove the label. Then remove the screw.
2. Separate the top case from the bottom case.
3. Remove the 4 screws securing the battery holder. Unplug the battery connector.
4. Remove the battery holder, and then remove the battery from the holder.
5. Dispose of the battery and product according to local laws.

[www.logitech.com/support/harmonytouch](http://www.logitech.com/support/harmonytouch)



Country	Support Languages	Toll-Free Support Number	Support Hours
Canada	Español	1-800-499-3508	Monday to Friday: 9am-7pm ET
	English	1-866-291-1505	Monday to Friday: 9am-10pm ET
	Français	1-800-392-0431	
USA	English	1-866-291-1505	Saturday & Sunday: 10am-5:30pm ET
	Français	1-800-392-0431	
	Español	1-0800-499-3508	Monday to Friday: 9am-7pm ET
Argentina	Español	0800-555-3284	Monday to Friday: 9am-8pm (Sao Paolo)
Brazil	Português	0800-891-4173	
Mexico	Español	001-800-578-9619	



[www.logitech.com](http://www.logitech.com)

© 2012 Logitech. All rights reserved. Logitech, the Logitech logo, and other Logitech marks are owned by Logitech and may be registered. Blu-ray Disc is a registered trademark of the Blu-ray Disc Association. HDMI, the HDMI logo, and High-Definition Multimedia Interface are trademarks or registered trademarks of HDMI Licensing, LLC in the United States and other countries. HDMI connection may not allow transmission of copyright-protected material, depending on the capability of the display device and the signal source. Microsoft, Windows, Windows logo, and Xbox 360 are trademarks of the Microsoft group of companies. PIONEER and the Pioneer logos are registered trademarks of Pioneer Corporation. Scientific-Atlanta and the Scientific-Atlanta logo are registered trademarks of Cisco Systems, Inc. and/or its affiliates in the U.S. and certain other countries. Vizio is a registered trademark of Vizio, Inc. Wi-Fi is a registered trademark of the Wi-Fi Alliance. All other trademarks are the property of their respective owners. Logitech assumes no responsibility for any errors that may appear in this manual. Information contained herein is subject to change without notice.

© 2012 Logitech. All rights reserved. Logitech, the Logitech logo, and other Logitech marks are owned by Logitech and may be registered. Blu-ray Disc is a registered trademark of the Blu-ray Disc Association. HDMI, the HDMI logo, and High-Definition Multimedia Interface are trademarks or registered trademarks of HDMI Licensing, LLC in the United States and other countries. HDMI connection may not allow transmission of copyright-protected material, depending on the capability of the display device and the signal source. Microsoft, Windows, Windows logo, and Xbox 360 are trademarks of the Microsoft group of companies. PIONEER and the Pioneer logos are registered trademarks of Pioneer Corporation. Scientific-Atlanta and the Scientific-Atlanta logo are registered trademarks of Cisco Systems, Inc. and/or its affiliates in the U.S. and certain other countries. Vizio is a registered trademark of Vizio, Inc. Wi-Fi is a registered trademark of the Wi-Fi Alliance. All other trademarks are the property of their respective owners. Logitech assumes no responsibility for any errors that may appear in this manual. Information contained herein is subject to change without notice.

620-004081.002