



Logitech® Harmony Touch

Setup Guide

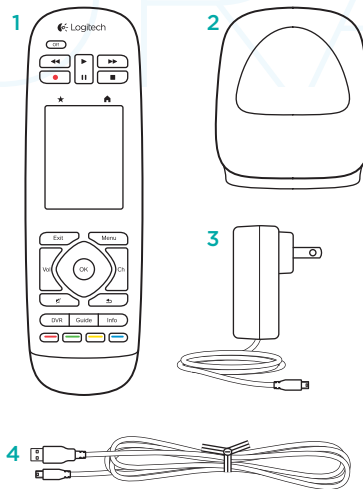
Guide d'installation

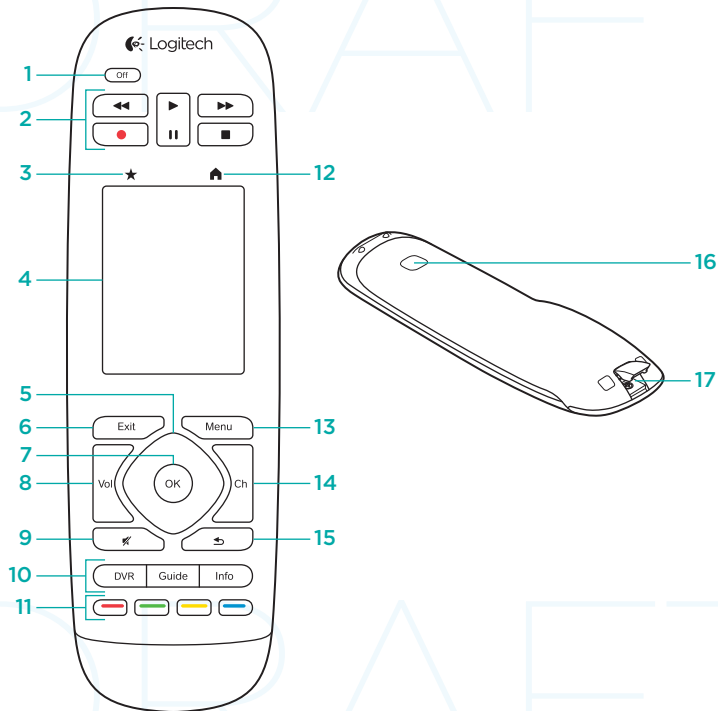
**COVER  
FPO**

English . . . . .	3	Español . . . . .	39
Français . . . . .	21	Português . . . . .	57
<b>www.logitech.com/support</b>  . . . . .			75

## Package contents

1. Remote
2. Charging cradle
3. AC Adapter
4. USB cable

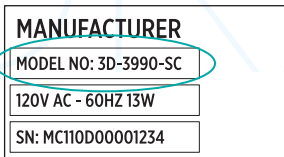




## Know your product

- 1. Off button** Power off your entire system.
- 2. Video controls** Perform standard AV functions.
- 3. Favorites** Display the Favorites screen.
- 4. LCD touch screen** View, launch, and edit activities and favorites, use the on-screen number pad, change settings, and get help.
- 5. Directional navigation** Press a pad corner for desired direction within a list or menu.
- 6. Exit** Leave a listing or menu.
- 7. OK** Press to select an option.
- 8. Volume control** Press the top to increase volume and the bottom to lower it.
- 9. Mute**
- 10. Satellite/Cable controls** DVR opens a record/play menu. Guide opens satellite/cable program listings. Info provides program information.
- 11. Color-coded navigation buttons** Perform cable, satellite, or Blu-ray functions.
- 12. Home** Display the Home screen.
- 13. Menu** Display a menu.
- 14. Channel control** Press the top for channel up and the bottom for channel down.
- 15. Previous** Press for previous channel.
- 16. IR window** Transfer device control commands (IR learning) from another remote.
- 17. Micro-USB port** Connect the Harmony remote to a PC to access My Harmony and receive power while updating.

## Set up your product

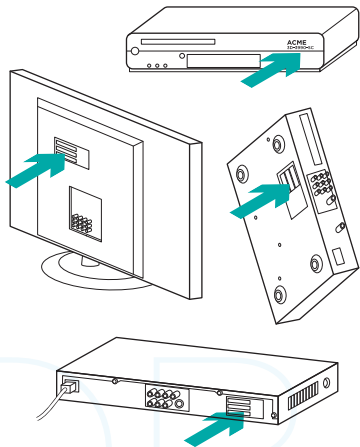


To set up your new Harmony remote, you will need to do the following:

1. Gather the manufacturer name and model number of your devices.
2. Note how your home entertainment system devices are wired and connected together.
3. Fill in your home entertainment system information using the blank form.

### Do I really need all my model numbers?

Yes. The setup process will ask for all your model numbers so the remote can know how to control your devices. It's better to gather them all at once rather than needing to go back and forth from your computer to your devices.



### Where do I find my model numbers?

Most devices have them somewhere on the back or bottom, sometimes on a label. Be sure to write the number down accurately because entering an incorrect or incomplete number may cause you trouble.

### What is an input?

Your TV can display video from multiple home entertainment devices—a cable/satellite box, a DVD player, a game console, etc. You select a different input to watch each of these devices. The input also matches the connector on the back of your TV. Your Harmony remote will need to understand what device is connected to what input to best control your system. (Some TVs use the term “source” instead of “input.”)

If you're using an audio video receiver, it also has inputs—for video and sound. Understanding these connections will be important to complete setup. Is your sound system switching both video and sound for your setup, or just sound? The Harmony software setup will ask you questions about this.

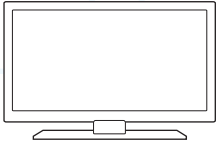
**Note:** Some older audio receivers have only inputs for sound, not video.

### How do I gather my system information?

Use the forms on the following pages to record the information about your home entertainment system.

**Note:** If you have more than 6 devices, we have an expanded form online you can use. Go to [www.logitech.com/support/harmonytouch](http://www.logitech.com/support/harmonytouch)

If your home entertainment system uses only a TV for sound, use this form.



**TV Manufacturer**

Model # \_\_\_\_\_

**What's connected?**

Input \_\_\_\_\_

Input \_\_\_\_\_

Input \_\_\_\_\_

Input \_\_\_\_\_



**Cable/Satellite Box Manufacturer**

Model # \_\_\_\_\_



**DVD/BluRay Player Manufacturer**

Model # \_\_\_\_\_



**Other Device Manufacturer**

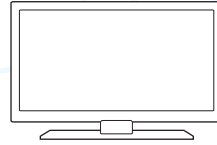
Model # \_\_\_\_\_



**Other Device Manufacturer**

Model # \_\_\_\_\_

If your home entertainment system uses a TV and an AV receiver, use this form.



**TV Manufacturer**

Model # \_\_\_\_\_

**What's connected?**

Input \_\_\_\_\_

Input \_\_\_\_\_

Input \_\_\_\_\_

Input \_\_\_\_\_



**AV Receiver Manufacturer**

Model # \_\_\_\_\_

**What's connected?**

Input \_\_\_\_\_

Input \_\_\_\_\_

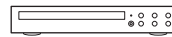
Input \_\_\_\_\_

Input \_\_\_\_\_



**Cable/Satellite Box Manufacturer**

Model # \_\_\_\_\_



**DVD/BluRay Player Manufacturer**

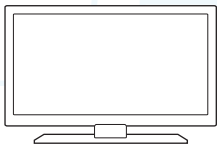
Model # \_\_\_\_\_



**Other Device Manufacturer**

Model # \_\_\_\_\_

Example home entertainment system :



**TV Manufacturer**

*Vizio*  
Model # *L32 HDTV 10A*

**What's connected?**

Input *HDMI1 used by cable box*  
Input *HDMI2 used by DVD/BluRay*  
Input *HDMI3 used by Xbox360*  
Input \_\_\_\_\_



**Cable/Satellite Box Manufacturer**

*Scientific Atlanta*  
Model # *Explorer 3100*



**DVD/BluRay Player Manufacturer**

*Pioneer*  
Model # *DV-414*



**Other Device Manufacturer**

*Microsoft*  
Model # *Xbox360*



**Other Device Manufacturer**

Model # \_\_\_\_\_

**Check your work**

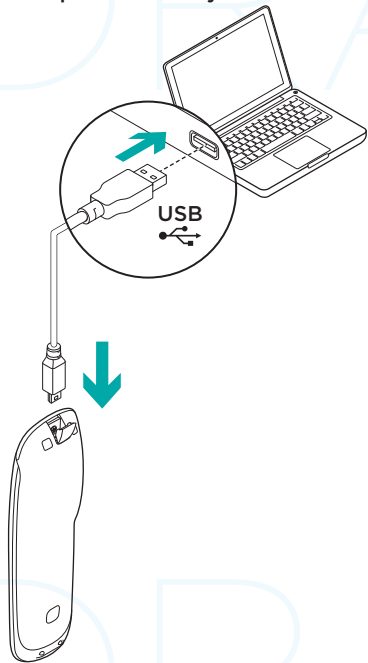
Before you proceed, make sure you have correctly recorded all your inputs. To check your work:

1. Turn on all your entertainment devices.
2. Using your original TV remote, cycle through your TV's inputs. Most TV remotes have an input or source button.
  - Note: If you are using a AV receiver, use your receiver's remote to cycle through the video inputs.
3. Press the input or source button and watch what displays on your TV.
  - What input is listed on your TV? Often it will display text showing the input.
  - What video content do you see on your TV. Is it your cable/satellite box, your DVD player, etc.?

4. Check your form and make sure you recorded the correct input for that device.
5. If it's different, write the correct information on the form.

When you've gone through all your TV's inputs and made sure you have recorded them correctly on the form, you're ready to set up the Harmony remote.

## Set up the Harmony remote

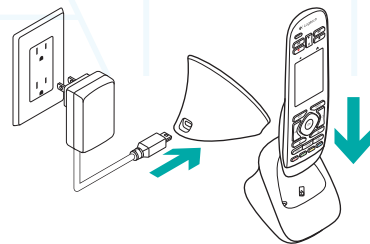


1. Launch a web browser. Go to [www.myharmony.com](http://www.myharmony.com).
2. Sign in.
  - If this is your first Harmony remote, click “Create an Account.”
  - If you already have a MyHarmony account, enter your username and password, and then click “Sign in.”
3. Follow the on-screen instructions to:
  - Create an account, or log into your existing account.
  - When prompted, connect the Harmony remote to your computer using the micro-USB cable.
  - Add devices (up to 15).
  - Create activities (e.g., “Watch TV”).
  - Set up your favorite channels (up to 50).
4. When prompted, click “Sync.”
5. Disconnect the Harmony remote from the computer after syncing.

## Guidelines for creating an activity

- Choose the devices involved in the activity.
- If applicable, specify which device changes channels and controls volume.
- Specify the inputs used and how they are selected.
- Answer additional questions unique to your system.

## Charge the battery

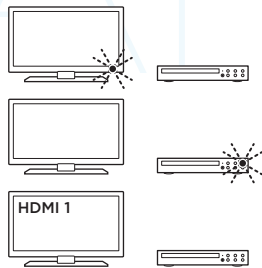
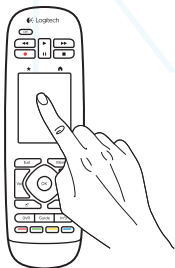


If the battery icon on the touch screen is red, showing low battery power, charge the battery. A full charge takes about 2 hours. A charge lasts about 3 days. Charging time and battery life may vary based upon use and conditions.

To charge the battery:

1. Connect the charging cradle to an AC outlet using the AC power adapter.
2. Place the Harmony remote in the charging cradle. A battery icon will appear on the display.

## Use your product



### Activities

The Harmony remote is an activity-based, universal remote that controls many types of entertainment devices using line-of-sight, infrared signals.

An activity is something you do with your entertainment system, such as watching TV, viewing a movie, or listening to music. The Harmony remote simplifies those activities. A single press of the touch screen will turn on the necessary devices and select the required inputs.

For example, selecting the “Watch TV” activity (which you create) will turn on your TV, cable box, and AV receiver while selecting the right inputs. All unused devices are switched off. The Harmony remote is now ready to run the devices needed for you to watch a show.

Your Harmony Touch main screen contains buttons and touch elements that help you navigate the remote's functions.



### Buttons

- ★ **Favorites** Takes you to your favorites channels.
  - 🏠 **Home** Returns to the main Home screen, with a list of all activities and settings.
- ### Touch screen
- From the touch screen, you can select the following functions:
- ◀ **Back** Takes you to the previous screen.
  - ❓ **Help** Starts interactive self-help.
  - ☰ **Devices** Takes you to a list of all your devices that you have set up in MyHarmony.com.



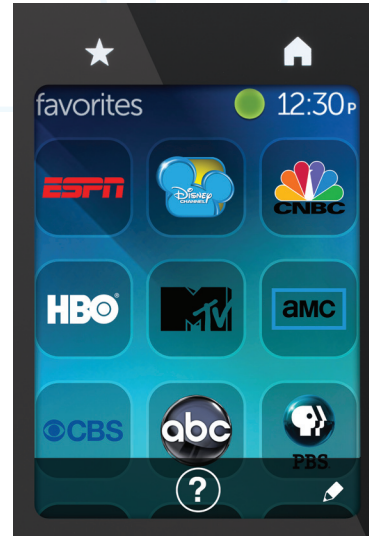


### Select activities

1. Tap the touch screen to activate it.
2. From the Home screen, swipe left or right to view activities.
3. Tap an activity to launch it. Commands associated with the activity appear.

**Note:** Swipe up and down to navigate commands. Tap to select a command. Only the activities you create are available.

To return to the home screen, press the **Home** button.



### Select Favorites

1. Tap the touch screen to activate it.
2. Tap the Favorites icon to launch the Favorites screen.
3. Swipe up and down to navigate your favorites.
4. Tap to select a favorite channel.

## Use Help

Obstacles (like a person walking in front of the remote) or too much distance between you and your TV can interfere with the signals your remote sends, causing it to go out of synch with your devices. Or maybe a device doesn't power on or off or switch inputs correctly. Use the remote's interactive self-help to resolve issues like these.

To use help:

1. On the touch screen, press Help (question mark icon).
2. Answer the questions, follow the instructions, and wait for the remote to fix the problem:

### Change settings

1. From the Home screen, swipe left until you see the Settings option.
2. Tap to select settings.
3. Some available settings include:
  - Changes to activities or devices
  - Set brightness
  - Set timeout
  - Set time
4. Follow the on-screen instructions.

### Add or change a device

1. Go to [www.myharmony.com](http://www.myharmony.com) and log in.
2. Click "Devices."
3. Click "Add a Device." To change a device, click the image of the device, and then click "Change Device Settings."
4. Follow the on-screen instructions.
5. Update the activities that use the device.
6. Connect the Harmony remote to your computer using the micro-USB cable.
7. When prompted, click "Sync."
8. Disconnect the Harmony remote from the computer after syncing.

**Note:** The Harmony remote supports up to 15 devices.

Deleting a device affects any activity that uses the device.

### Add or change an activity

1. Go to [www.myharmony.com](http://www.myharmony.com) and log in.
2. Click "Activities."
3. Click "Add an Activity." To change an activity, click the image of the activity, and then click "Change Your Settings."
4. Follow the on-screen instructions.
5. Connect the Harmony remote to your computer using the micro-USB cable.
6. When prompted, click "Sync."
7. Disconnect the Harmony remote from the computer after syncing.

## Visit Product Central

There's more information and support online for your product. Take a moment to visit Product Central to learn more about your new Harmony remote.

Browse online articles for setup help, usage tips, or information about additional features.

Connect with other users in our Community Forums to get advice, ask questions, and share solutions.

At Product Central, you'll find a wide selection of content:

- Tutorials
- Troubleshooting
- Support community
- Software downloads
- Online documentation
- Warranty information
- Spare parts (when available)

Go to [www.logitech.com/support/harmonytouch](http://www.logitech.com/support/harmonytouch)

## Troubleshooting

### Basic Troubleshooting Tips

Use Help (question mark) on the touch screen to resolve issues.

### The Harmony remote does not communicate with MyHarmony

- Check the USB cable and its connection.
- Do not use a USB hub.
- Try another USB port.
- Disable pop-up blockers.
- Close your browser and restart your computer.

- Restart the remote: Press and hold the Off button for 15 seconds or until the Logitech Logo appears on the display.

### Device not listed on MyHarmony or the Harmony remote does not have a command

- Check the manufacturer name and model number entries.
- Use the Harmony remote IR learning feature.

For more help go to [www.logitech.com/support/harmonytouch](http://www.logitech.com/support/harmonytouch)

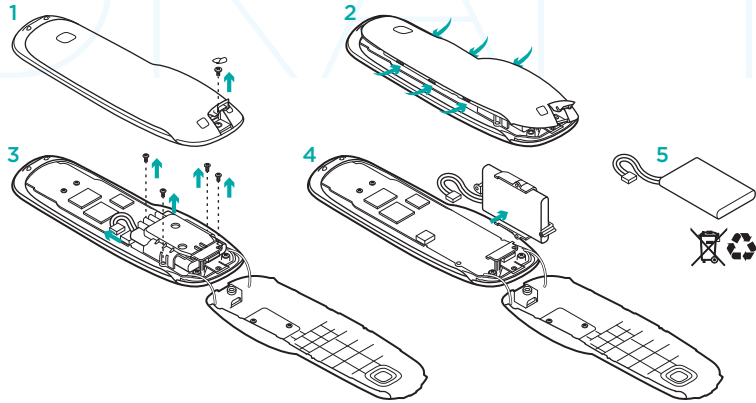
---

## What do you think?

Please take a minute to tell us.  
Thank you for purchasing our product.

[www.logitech.com/ithink](http://www.logitech.com/ithink)

## Battery disposal at product end of life



1. Open the USB door and remove the label. Then remove the screw.
2. Separate the top case from the bottom case.
3. Remove the 4 screws securing the battery holder. Unplug the battery connector.
4. Remove the battery holder, and then remove the battery from the holder.
5. Dispose of the battery and product according to local laws.

[www.logitech.com/support/harmonytouch](http://www.logitech.com/support/harmonytouch)



Country	Support Languages	Toll-Free Support Number	Support Hours
Canada	Español	1-800-499-3508	Monday to Friday: 9am-7pm ET
	English	1-866-291-1505	Monday to Friday: 9am-10pm ET
USA	Français	1-800-392-0431	Saturday & Sunday: 10am-5:30pm ET
	English	1-866-291-1505	Monday to Friday: 9am-7pm ET
	Français	1-800-392-0431	
Argentina	Español	0800-555-3284	Monday to Friday: 9am-8pm
Brazil	Português	0800-891-4173	(Sao Paolo)
Mexico	Español	001-800-578-9619	



[www.logitech.com](http://www.logitech.com)

© 2012 Logitech. All rights reserved. Logitech, the Logitech logo, and other Logitech marks are owned by Logitech and may be registered. Blu-ray Disc is a registered trademark of the Blu-ray Disc Association. HDMI, the HDMI logo, and High-Definition Multimedia Interface are trademarks or registered trademarks of HDMI Licensing, LLC in the United States and other countries. HDMI connection may not allow transmission of copyright-protected material, depending on the capability of the display device and the signal source. Microsoft, Windows, Windows logo, and Xbox 360 are trademarks of the Microsoft group of companies. PIONEER and the Pioneer logos are registered trademarks of Pioneer Corporation. Scientific-Atlanta and the Scientific-Atlanta logo are registered trademarks of Cisco Systems, Inc. and/or its affiliates in the U.S. and certain other countries. Vizio is a registered trademark of Vizio, Inc. Wi-Fi is a registered trademark of the Wi-Fi Alliance. All other trademarks are the property of their respective owners. Logitech assumes no responsibility for any errors that may appear in this manual. Information contained herein is subject to change without notice.

© 2012 Logitech. All rights reserved. Logitech, the Logitech logo, and other Logitech marks are owned by Logitech and may be registered. Blu-ray Disc is a registered trademark of the Blu-ray Disc Association. HDMI, the HDMI logo, and High-Definition Multimedia Interface are trademarks or registered trademarks of HDMI Licensing, LLC in the United States and other countries. HDMI connection may not allow transmission of copyright-protected material, depending on the capability of the display device and the signal source. Microsoft, Windows, Windows logo, and Xbox 360 are trademarks of the Microsoft group of companies. PIONEER and the Pioneer logos are registered trademarks of Pioneer Corporation. Scientific-Atlanta and the Scientific-Atlanta logo are registered trademarks of Cisco Systems, Inc. and/or its affiliates in the U.S. and certain other countries. Vizio is a registered trademark of Vizio, Inc. Wi-Fi is a registered trademark of the Wi-Fi Alliance. All other trademarks are the property of their respective owners. Logitech assumes no responsibility for any errors that may appear in this manual. Information contained herein is subject to change without notice.

620-004081.002



## Logitech® Important Information

### Safety, Compliance and Warranty

## Logitech® Informations importantes

### Sécurité, conformité et garantie

## English

**Care and Maintenance.** Do not open the remote. There are no user-serviceable parts inside. Do not allow moisture to enter the unit. Moisture will corrode the inner electronics. To clean the LCD screen, wipe gently with a dry cloth. Any changes or modifications not expressly approved by Logitech® Inc. void the user's authority to operate the equipment and could void the warranty.

**End-of-life Battery Disposal Instructions.** This device contains an internal, lithium-ion rechargeable battery that is non-replaceable. Battery life is dependent upon usage. Heavy daily use will result in shorter battery life. Casual use will extend battery life. If you suspect that the battery may be dead, try charging it. If the battery does not recharge, please contact Logitech® Harmony® Customer Support for repair or replacement information. Consult local laws and regulations for proper battery disposal in your area. If there are no local regulations concerning battery disposal, please dispose of the dead battery in a waste bin for electronic devices. Keep all batteries out of the reach of children.

**CAUTION:** The battery used in this device may present a risk of fire or chemical burn if mistreated. Do not disassemble, expose to heat above 54° C (130° F), incinerate, or immerse in water or liquid of any kind. Do not use or charge the battery if it appears to be leaking, discolored, deformed, or in any way abnormal. Do not leave your battery discharged or unused for extended periods of time. When the battery is misused, it may explode or leak, causing burns and persona injury. If the battery leaks, use normal precaution and discard it immediately following the laws and regulations governing battery disposal in your area. Remember that a leaking battery can cause skin burns or other personal injury. Keep this and all batteries out of the reach of children. Risk of explosion if battery is replaced with an incorrect battery type.

**Power Supply Warning.** The power supply for this product is for indoor use only. Use the power supply that comes with your product; do not use any other power supply. Do not use a damaged power supply or attempt to repair one that is damaged. Do not immerse the power supply in water or subject it to physical abuse. Inspect the power supply regularly for damage to its cable, plug, and body.

**FCC Compliance and Advisory Statement.** This equipment has been tested and found to comply with the limits for a Class B digital devices, pursuant to Part 15 of the FCC Rules. These limits are designed to provide reasonable

protection against harmful interference in a residential installation. This equipment generates, uses, and can radiate radio frequency energy and, if not installed and used in accordance with the instruction manual, may cause harmful interference to radio communications. However, there is no guarantee that interference will not occur in a particular installation. If this equipment does cause harmful interference to radio or television reception, which can be determined by turning the equipment off and on, the user is encouraged to try to correct the interference by one of more of the following measures:

- Reorient or relocate the receiving antenna
- Increase the separation between the equipment and receiver
- Connect the equipment into an outlet on a circuit different from that to which the receiver is connected.

Consult the dealer or an experienced radio/TV technician for help.

**Warning:** Changes or modifications not expressly approved by Logitech could void the user's authority to operate the equipment. Where shielded interface cables have been provided with the product or specified additional components or accessories elsewhere defined to be used with the installation of the product, they must be used in order to ensure compliance with FCC regulations. This device complies with Part 15 of the FCC Rules. Operation is subject to the following two conditions: (1) this device may not cause harmful interference and (2) this device must accept any interference received, including interference that may cause undesired operation.

**Canadian DOC:** This digital device does not exceed the Class B limits for radio noise emissions from digital apparatus specified in the interference-causing equipment standard entitled "Digital Apparatus," ICES-003 of the Department of Communications.

**RF Compliance and Advisory Statement:** This device complies with RSS-210 of Industry Canada. Operation is subject to the following two conditions: 1) this device may not cause harmful interference, and 2) this device must accept any interference, including interference that may cause undesired operation of the device.

**Logitech Compliance. Your product is FCC compliant.** For more information, refer to the software help system or online at [www.logitech.com/compliance](http://www.logitech.com/compliance).

**Logitech hardware product limited warranty**

Logitech warrants to the original purchaser that your Logitech hardware product shall be free from defects in material and workmanship for

the period of time, identified on your product package and/or contained in the user documentation, from the date of purchase. You may also find this information by selecting your product in the Online Support section of our website at [www.logitech.com/support](http://www.logitech.com/support). Except where prohibited by applicable law, this warranty is nontransferable and is limited to the original purchaser. This warranty gives you specific legal rights, and you may also have other rights that vary under local laws.

Logitech's entire liability and your exclusive remedy for any breach of warranty shall be, at Logitech's option, (1) to repair or replace the hardware, or (2) to refund the price paid, provided that the hardware is returned to the point of purchase or such other place as Logitech may direct with a copy of the sales receipt or dated itemized receipt. Shipping and handling charges may apply, except where prohibited by applicable law. Logitech may, at its option, use new or refurbished or used parts in good working condition to repair or replace any hardware product. Any replacement hardware product will be warranted for the remainder of the original warranty period or thirty (30) days, whichever is longer or for any additional period of time that may be applicable in your jurisdiction.

This warranty does not cover problems or damage resulting from (1) accident, abuse, misapplication, or any unauthorized repair, modification or disassembly; (2) improper operation or maintenance, usage not in accordance with product instructions or connection to improper voltage supply; or (3) use of consumables, such as replacement batteries, not supplied by Logitech except where such restriction is prohibited by applicable law.

**How to obtain warranty support.** Before submitting a warranty claim, we recommend you visit the support section at [www.logitech.com/support](http://www.logitech.com/support) for technical assistance. Valid warranty claims are generally processed through the point of purchase during the first thirty (30) days after purchase; however, this period of time may vary depending on where you purchased your product - please check with Logitech or the retailer where you purchased your product for details. Warranty claims that cannot be processed through the point of purchase and any other product related questions should be addressed directly to Logitech. The addresses and customer service contact information for Logitech can be found in the documentation accompanying your product and on the web at [www.logitech.com/support](http://www.logitech.com/support).

**Limitation of liability.** LOGITECH SHALL NOT BE LIABLE FOR ANY SPECIAL, INDIRECT, INCIDENTAL OR CONSEQUENTIAL DAMAGES

WHATSOEVER, INCLUDING BUT NOT LIMITED TO LOSS OF PROFITS, REVENUE OR DATA (WHETHER DIRECT OR INDIRECT) OR COMMERCIAL LOSS FOR BREACH OF ANY EXPRESS OR IMPLIED WARRANTY ON YOUR PRODUCT EVEN IF LOGITECH HAS BEEN ADVISED OF THE POSSIBILITY OF SUCH DAMAGES. Some jurisdictions do not allow the exclusion or limitation of special, indirect, incidental or consequential damages, so the above limitation or exclusion may not apply to you.

**Duration of implied warranties.** EXCEPT TO THE EXTENT PROHIBITED BY APPLICABLE LAW, ANY IMPLIED WARRANTY OR CONDITION OF MERCHANTABILITY OR FITNESS FOR A PARTICULAR PURPOSE OF THIS HARDWARE PRODUCT IS LIMITED IN DURATION TO THE DURATION OF THE APPLICABLE LIMITED WARRANTY PERIOD FOR YOUR PRODUCT. Some jurisdictions do not allow the exclusion or limitation of special, indirect, incidental or consequential damages, so the above limitation or exclusion may not apply to you.

**National Statutory Rights.** Consumers have legal rights under applicable national legislation governing the sale of consumer goods. Such rights are not affected by the warranties in this Limited Warranty.

**No Other Warranties.** No Logitech dealer, agent, or employee is authorized to make any modification, extension, or addition to this warranty.

**Warranty Periods.** Please note that in the European Union, any warranty period less than two years shall be increased to two years.

**Logitech address.** Logitech, Inc. 7600 Gateway Boulevard, Newark, California 94560-9998

## Français

**Entretien.** N'ouvrez pas la télécommande. Elle ne contient aucune pièce réparable par l'utilisateur. Évitez d'exposer la télécommande à l'humidité. Ses composants électroniques internes risqueraient de s'oxyder. Pour nettoyer l'écran LCD, essayez-le à l'aide d'un chiffon sec. Toutes modifications ou tous changements effectués sans l'accord exprès de Logitech® Inc risquent d'annuler le droit de l'utilisateur à utiliser son équipement et de rendre la garantie nulle et non avenue.

**Consignes de recyclage des batteries usagées.** Ce dispositif renferme une batterie rechargeable au ion-lithium qui ne peut pas être remplacée. La longévité de la batterie dépend de l'utilisation du dispositif. Une utilisation quotidienne prolongée aura pour effet d'écourter la longévité

de la batterie. Une utilisation ponctuelle permet à l'inverse d'accroître sa durée de vie. Si vous pensez que la batterie ne fonctionne plus, essayez de la recharger. Si le rechargement s'avère infructueux, veuillez contacter le Service clientèle de Logitech® Harmony® pour obtenir des informations sur les réparations ou le remplacement. Conformez-vous aux lois et règlements de votre région sur le recyclage des piles/batteries. S'il n'existe aucun règlement local concernant leur recyclage, veuillez jeter le dispositif dans une poubelle réservée aux dispositifs électroniques.

**ATTENTION:** la batterie du dispositif risque d'occasionner des risques d'incendie ou de brûlure chimique si elle n'est pas manipulée comme il se doit. Ne la démontez pas, ne l'exposez pas à des températures supérieures à 54°C, ne l'incinerez pas et ne la mouillez pas. N'utilisez pas la batterie et ne la rechargez pas si elle coule, si elle est décolorée, déformée ou si elle présente une anomalie. Ne laissez pas la batterie déchargée ni inutilisée pendant de longues périodes. En cas de mauvaise utilisation, elle risque d'exploser ou de couler, entraînant des dommages matériels et corporels. Si la batterie coule, prenez les précautions d'usage et débarrassez-vous en immédiatement en respectant les lois et règlements de votre région sur le recyclage des piles/batteries. N'oubliez pas qu'une batterie qui coule risque de provoquer des brûlures ou d'autres dommages corporels. Tenez la batterie hors de portée des enfants. Risque d'explosion si la batterie est remplacée par une batterie inappropriée.

**Avertissement relatif au boîtier d'alimentation.** Le boîtier d'alimentation livré avec ce produit est exclusivement destiné à un usage en intérieur. Utilisez uniquement le boîtier d'alimentation fourni avec le produit. Si le boîtier d'alimentation est endommagé, ne l'utilisez pas et ne tentez en aucun cas de le réparer. Ne plongez pas le boîtier d'alimentation dans l'eau et ne le soumettez à aucune utilisation abusive. Vérifiez régulièrement l'état du câble, de la prise et des parois du boîtier d'alimentation.

**Déclaration FCC.** Cet équipement a été testé et déclaré conforme aux limitations prévues dans le cadre de la catégorie B des appareils numériques selon la définition de la section 15 du règlement de la FCC. Ces limitations ont été conçues pour fournir une protection raisonnable contre tout brouillage nuisible au sein d'une installation résidentielle. Cet équipement génère, utilise et diffuse des ondes radio et, s'il n'est pas installé et utilisé en conformité avec le manuel d'instructions fourni, peut causer des interférences gênantes avec les communications radio.

Nous ne saurions toutefois garantir l'absence d'interférences dans une installation particulière. Si ce dispositif produit des interférences graves lors de réceptions radio ou télévisées qui peuvent être détectées en activant ou désactivant le dispositif, vous êtes invité à les supprimer de plusieurs manières:

- Réorienter ou déplacer l'antenne de réception.
- Augmenter la distance séparant le dispositif et le récepteur.
- Connecter l'équipement à un circuit différent de celui auquel le récepteur est connecté.

Contactez votre revendeur ou un technicien radio/TV qualifié.

**Avertissement:** toutes modifications ou tous changements effectués sans l'accord exprès de Logitech pourraient annuler le droit de l'utilisateur à utiliser son équipement. Si des câbles d'interface blindés ont été fournis avec le produit ou si des composants ou des accessoires complémentaires sont recommandés, ils doivent être utilisés lors de l'installation du produit afin d'assurer la conformité avec le règlement FCC. Ce dispositif a été testé et déclaré conforme à la section 15 du règlement de la FCC. L'utilisation de la caméra est soumise aux deux conditions suivantes: (1) le dispositif concerné ne doit pas causer d'interférences dangereuses et (2) il doit accepter toute interférence reçue, y compris les interférences risquant d'engendrer un fonctionnement indésirable.

**Documents canadiens:** cet appareil numérique est conforme aux limitations concernant l'émission d'interférences radio par des appareils numériques de catégorie B, telles que stipulées dans le cadre de la norme Appareils numériques ICES-003 édictée par le ministère des Communications.

**Déclaration de conformité aux normes relatives aux hautes fréquences:** ce dispositif est conforme à la norme Industry Canada RSS-210. L'utilisation de l'appareil est soumise aux deux conditions suivantes: 1) le dispositif concerné ne doit pas causer d'interférences nocives et 2) il doit accepter toute interférence reçue, y compris les interférences risquant d'engendrer un fonctionnement indésirable.

**Conformité Logitech. Votre produit est conforme aux normes FCC.** Pour plus d'informations, reportez-vous au système d'aide en ligne du logiciel ou du site Web: [www.logitech.com/compliance](http://www.logitech.com/compliance).

**Garantie matérielle limitée Logitech**  
Logitech garantit à l'acheteur initial que le produit matériel Logitech est exempt de tout défaut matériel et de fabrication pour la période

indiquée sur l'emballage et/ou dans la documentation du produit, à partir de la date d'achat. Il est également possible de trouver ces informations en sélectionnant le produit dans la section d'assistance en ligne de notre site Web à l'adresse [www.logitech.com/support](http://www.logitech.com/support). Dans les limites du cadre prévu par la loi, cette garantie est limitée à l'acheteur initial et ne peut faire l'objet d'un transfert. La présente garantie vous confère des droits légaux spécifiques, qui peuvent varier d'un pays à l'autre.

En cas de rupture de garantie, l'intégralité de la responsabilité de Logitech et votre recours exclusif consisteront, à la discrétion de Logitech: (1) à réparer ou remplacer le matériel, sous réserve qu'il soit renvoyé au point de vente ou à tout autre lieu indiqué par Logitech, accompagné d'une copie du justificatif d'achat ou du reçu détaillé et daté, ou (2) à rembourser le prix d'achat. Dans les limites du cadre prévu par la loi, il se peut que des frais d'expédition et d'administration vous soient facturés. Logitech se réserve le droit d'utiliser du matériel utilisé lors de l'installation du produit afin d'assurer la conformité avec le règlement FCC. Ce dispositif a été testé et déclaré conforme à la section 15 du règlement de la FCC. L'utilisation de la caméra est soumise aux deux conditions suivantes: (1) le dispositif concerné ne doit pas causer d'interférences dangereuses et (2) il doit accepter toute interférence reçue, y compris les interférences risquant d'engendrer un fonctionnement indésirable.

Dans les limites du cadre prévu par la loi, cette garantie ne couvre pas les problèmes ou dommages dus (1) à un accident, à un mauvais traitement, à une utilisation inappropriée, ou à des réparations, modifications ou démontages non autorisés; (2) à une utilisation ou un entretien inappropriés, à une utilisation non conforme aux instructions relatives au produit ou à une alimentation électrique inadéquate; ou (3) à l'utilisation de consommables, tels des piles de rechange, non fournis par Logitech.

**Demande de garantie.** Avant de porter une réclamation relative à la garantie, il est recommandé de consulter notre rubrique de support technique sur [www.logitech.com/support](http://www.logitech.com/support). Les réclamations sont généralement traitées par le point de vente d'origine dans les trente (30) jours suivant l'achat du produit. Ce délai pouvant toutefois varier en fonction du pays d'achat, veuillez contacter Logitech ou le revendeur du produit pour de plus amples informations. Les réclamations ne pouvant être traitées sur le point de vente doivent être directement adressées à Logitech, de même que toute autre question relative à la garantie. Vous trouverez les coordonnées du service clientèle Logitech dans la documentation accompagnant le produit ou sur notre site Web à l'adresse [www.logitech.com/support](http://www.logitech.com/support).

**Durée de garantie.** Veuillez noter que dans l'Union européenne, toute période de garantie inférieure à deux années doit être rallongée pour atteindre une durée de deux années complètes.

**Adresse de Logitech.** Logitech Inc., 7600 Gateway Boulevard, Newark, Californie 94560-9998, Etats-Unis

**Limites de responsabilité.** LOGITECH NE SAURAIT ETRE TENU POUR RESPONSABLE EN CAS DE DOMMAGE PARTICULIER, INDIRECT, ACCESSOIRE OU CONSECUTIF QUEL QU'IL SOIT, Y COMPRIS ET SANS QUE CETTE ENUMERATION SOIT LIMITATIVE, LES DOMMAGES ENTRAINES PAR LA PERTE DE BENEFICES, DE REVENUS OU DE DONNEES (DIRECTEMENT OU INDIRECTEMENT), OU LES PREJUDICES COMMERCIAUX EN CAS DE NON-RESPECT DE TOUTE GARANTIE IMPLICITE OU EXPLICITE DE CE PRODUIT, MEME SI LOGITECH A ETE INFORME DE L'EVENTUALITE DE TELS DOMMAGES. Certaines juridictions n'autorisent pas l'exclusion ou la limitation des dommages particuliers, indirects, accessoires ou consécutifs; il est donc possible que la limitation ou l'exclusion susmentionnée ne s'applique pas à votre cas.

**Durée des garanties implicites.** DANS LE CADRE MAXIMAL PREVU PAR LA LOI, TOUTE GARANTIE OU CONDITION IMPLICITE DU CARACTERE ADEQUAT POUR LA COMMERCIALISATION OU UN USAGE PARTICULIER EST LIMITEE DANS LE TEMPS A LA PERIODE DE GARANTIE LIMITEE APPLICABLE A CE PRODUIT. Certaines juridictions n'autorisent pas l'exclusion ou la limitation des dommages particuliers, indirects, accessoires ou consécutifs; il est donc possible que la limitation ou l'exclusion susmentionnée ne s'applique pas à votre cas.

**Droits statutaires applicables aux Etats-Unis.** Les consommateurs disposent de droits légaux dans le cadre de la législation nationale applicable qui régit la vente des biens de consommation. Ces droits ne sont pas affectés par les garanties énoncées dans la présente Garantie limitée.

**Aucune autre garantie.** Aucun distributeur, agent ou employé de Logitech n'est autorisé à effectuer des modifications, des extensions ou des ajouts dans cette garantie.

**Durée de garantie.** Veuillez noter que dans l'Union européenne, toute période de garantie inférieure à deux années doit être rallongée pour atteindre une durée de deux années complètes.

**Adresse de Logitech.** Logitech Inc., 7600 Gateway Boulevard, Newark, Californie 94560-9998, Etats-Unis



www.logitech.com

© 2012 Logitech. All rights reserved. Logitech, the Logitech logo, and other Logitech marks are owned by Logitech and may be registered. All other trademarks are the property of their respective owners. Logitech assumes no responsibility for any errors that may appear in this manual. Information contained herein is subject to change without notice.

© 2012 Logitech. Tous droits réservés. Logitech, le logo Logitech et les autres marques Logitech sont la propriété exclusive de Logitech et sont susceptibles d'être des marques déposées. Toutes les autres marques sont la propriété exclusive de leurs détenteurs respectifs. Logitech décline toute responsabilité en cas d'erreurs dans ce manuel. Les informations énoncées dans le présent document peuvent faire l'objet de modifications sans avis préalable.

620-004086.003



## Español

**Cuidado y mantenimiento.** No abra el control remoto. No hay piezas internas susceptibles de sustitución o reparación por el usuario. Proteja el dispositivo de la humedad. La humedad puede corroer los circuitos internos. Para limpiar la pantalla LCD, frótelas suavemente con un paño seco. Cualquier cambio o modificación no autorizado expresamente por Logitech<sup>®</sup> Inc. anulará el derecho del usuario para utilizar el equipo y puede invalidar la garantía.

**Instrucciones para desecher la pila.** Este dispositivo contiene una pila interna recargable de ion litio no sustituible. La duración de la pila depende de su uso. Un uso intensivo y diario acortará la duración de la pila. Un uso ocasional alargará dicha duración. Si piensa que la pila puede estar gastada, pruebe a cargarla. Si no se recarga, póngase en contacto con el servicio de atención al cliente de Logitech<sup>®</sup> Harmony<sup>™</sup> para información sobre reparación o sustitución. Infórmese sobre las regulaciones y leyes concernientes a su jurisdicción en cuanto a pilas desechables. Si no existiera ninguna normativa aplicable, le rogamos que deposite la pila usada en un contenedor para dispositivos electrónicos.

**PRECAUCIÓN:** La pila usada en este dispositivo puede provocar incendios o quemaduras químicas si no se trata debidamente. No la desmonte, someta a temperaturas superiores a 54° C o incineración, ni la sumerja en agua o líquidos de ningún tipo. No utilice ni recargue la pila si parece que tiene una fuga, pérdida de color, está deformada o presenta cualquier otro tipo de anomalía. No deje la pila descargada o sin utilizar durante periodos prolongados. Un uso inadecuado de la pila puede hacerla explotar u originar escapes, con el consiguiente riesgo de quemaduras y lesiones físicas. Si detecta una fuga de líquido, deshágase de la pila de forma apropiada, de acuerdo con las disposiciones de la legislación local. Recuerde que una pila con fugas puede producir quemaduras en la piel u otros tipos de lesiones físicas. Mantenga todo tipo de pilas fuera del alcance de los niños. Riesgo de explosión si se utiliza un tipo de pila inadecuado.

**Advertencia sobre fuentes de alimentación.** La fuente de alimentación suministrada con este producto sólo puede usarse en interiores.

Utilice únicamente la fuente de alimentación suministrada con su producto. No utilice una fuente de alimentación que esté dañada ni intente repararla. Trate la fuente de alimentación con cuidado y no la sumerja en líquidos. Examine la fuente de alimentación periódicamente para comprobar el buen estado del cable, el conector y la caja.

**Recomendaciones y cumplimiento de las normativas FCC.** Este equipo ha sido sometido a las pruebas pertinentes y cumple con los límites establecidos para un dispositivo digital de la Clase B, según lo establecido en el apartado 15 de la normativa FCC. Estos límites están destinados a proporcionar protección adecuada ante interferencias perjudiciales en instalaciones domésticas. Este equipo genera, usa y puede emitir energía radioeléctrica. Respete las instrucciones del manual durante la instalación y utilización del equipo para evitar la aparición de posibles interferencias de radio. No obstante, no hay garantía de que no vayan a producirse interferencias en una instalación concreta. Si este equipo es el responsable de la presencia de interferencias en la recepción de radio o televisión (lo que puede verificarse apagando y encendiendo el equipo), se aconseja tomar una o varias de las medidas siguientes para intentar eliminar las interferencias:

- Cambie la orientación o la ubicación de la antena receptora.
- Aumente la separación entre el equipo y el receptor.
- Conecte el equipo a una toma de corriente perteneciente a un circuito diferente al que está conectado el receptor.

Recorra a su distribuidor o a personal técnico especializado en radio y televisión.

**Advertencia:** La realización de cualquier cambio o modificación no autorizado expresamente por Logitech podría anular los derechos del usuario para utilizar el equipo. Si el producto incluye cables de interfaz blindados o si se emplean componentes o accesorios adicionales especificados por un tercero para su utilización con la instalación del producto, deben respetarse en todo momento las normas de la FCC. Este dispositivo cumple con el apartado 15 de las normativas FCC. El funcionamiento está sujeto a las dos condiciones siguientes: (1) este dispositivo no debe originar interferencias perjudiciales y (2) este dispositivo no debe rechazar ninguna interferencia recibida, incluso cuando ésta pudiera originar el funcionamiento indebido del dispositivo.

**Logitech y el cumplimiento de normativas. El producto cumple con las normativas FCC.** Para más información, consulte el sistema de ayuda del software o visite la página Web [www.logitech.com/compliance](http://www.logitech.com/compliance).

**Garantía limitada de productos de hardware de Logitech.** Logitech garantiza al comprador original la ausencia de anomalías en lo referente a los materiales y a la fabricación del producto Logitech de hardware durante el tiempo especificado en el paquete del producto y/o indicado en la documentación del producto, a partir de la fecha de adquisición.

También puedes encontrar esta información si seleccionas la sección de asistencia en línea relativa al producto en nuestra página Web en [www.logitech.com/support](http://www.logitech.com/support). Salvo en lo que prohíba la ley vigente, esta garantía es intransferible y protege exclusivamente al comprador original. Esta garantía otorga al usuario derechos legales específicos; puede que poseas otros derechos que variarán de acuerdo con la legislación local.

La responsabilidad total de Logitech y la única indemnización a la que el usuario tendrá derecho en caso de incumplimiento de la garantía consistirá, a discreción de Logitech, en: (1) la reparación o sustitución del hardware o (2) el reembolso del importe abonado, siempre y cuando el hardware se devuelva al punto de venta, o cualquier otro lugar que Logitech indique, junto con una copia del recibo de compra o un recibo detallado y fechado.

Pueden ser aplicables tasas de envío, salvo que lo prohíba la ley vigente. Logitech puede, a su discreción, utilizar piezas nuevas, reparadas o usadas en buen estado de funcionamiento para reparar o sustituir cualquier producto de hardware. Cualquier producto de hardware suministrado para reemplazar el producto original tendrá una garantía equivalente al periodo restante de la garantía original o a un periodo de treinta (30) días, prevaleciendo el periodo más largo, o durante cualquier periodo adicional aplicable en tu jurisdicción.

Esta garantía no cubre problemas o daños resultantes de (1) accidentes, uso indebido, uso incorrecto o cualquier reparación, modificación o desmontaje no autorizado; (2) uso o mantenimiento incorrecto, uso no de acuerdo con las instrucciones del producto o conexión a una fuente de alimentación incorrecta; o (3) uso de consumibles, como baterías de repuesto, no proporcionados por Logitech salvo donde ese tipo de restricciones estén prohibidas por la ley vigente.

**Procedimiento de reclamación de garantía.** Antes de enviar una reclamación de garantía, recomendamos que visites la sección de asistencia técnica en [www.logitech.com/support](http://www.logitech.com/support). Aunque las reclamaciones de garantía válidas se suelen procesar a través del punto de venta durante los primeros treinta (30) días a partir de la fecha de adquisición, el plazo de tiempo puede variar según el lugar en el que se haya adquirido el producto. Solicita información a Logitech o al distribuidor que te haya vendido el producto. Las reclamaciones de garantía que no se procesen a través del punto de venta, así como cualquier pregunta relativa al producto, deben dirigirse directamente a Logitech. Las direcciones y la información de contacto del servicio de atención al cliente de Logitech figuran en la documentación adjunta con el producto y en la página Web [www.logitech.com/support](http://www.logitech.com/support).

**Limitación de responsabilidad.** EN NINGÚN CASO SE CONSIDERARÁ A LOGITECH RESPONSABLE DE NINGÚN DAÑO ESPECIAL, INDIRECTO, RESULTANTE O FORTUITO, INCLUIDOS ENTRE OTROS LOS DERIVADOS DE LA PÉRDIDA DE BENEFICIOS, INGRESOS O DATOS (YA SEAN DIRECTOS O INDIRECTOS) O PÉRDIDAS COMERCIALES POR INCUMPLIMIENTO DE CUALQUIER GARANTÍA EXPRESA O IMPLÍCITA DEL PRODUCTO INCLUSO CUANDO SE HAYA NOTIFICADO A LOGITECH LA POSIBILIDAD DE TALES DAÑOS. Dado que en algunas jurisdicciones no se permiten las exclusiones o limitaciones de responsabilidad por daños especiales, indirectos, resultantes o fortuitos, puede que las limitaciones o exclusiones expuestas arriba no te sean aplicables.

**Duración de garantías implícitas.** SALVO EN LO QUE PROHIBA LA LEY VIGENTE, LA DURACIÓN DE CUALQUIER GARANTÍA IMPLÍCITA O CONDICIÓN DE COMERCIALIZACIÓN O ADECUACIÓN PARA UN USO ESPECÍFICO DE ESTE PRODUCTO DE HARDWARE SE LIMITA A LA DURACIÓN DEL PERIODO DE GARANTÍA LIMITADA APLICABLE AL PRODUCTO. Dado que en algunas jurisdicciones no se permiten las exclusiones o limitaciones de responsabilidad por daños especiales, indirectos, resultantes o fortuitos, puede que las limitaciones o exclusiones expuestas arriba no te sean aplicables.

**Derechos legales nacionales.** Los consumidores poseen derechos legales según la legislación nacional vigente que rija la venta de productos de consumo. Las garantías de esta garantía limitada no afectan a esos derechos.

**Ninguna otra garantía.** Ningún distribuidor, representante o empleado de Logitech está autorizado a realizar modificaciones, extensiones o adiciones en esta garantía.

**Periodos de garantía.** Ten en cuenta que, en la Unión Europea, cualquier periodo de garantía inferior a dos años deberá ampliarse a dos años.

**Dirección de Logitech.** Logitech, Inc. 7600 Gateway Boulevard, Newark, California 94560-9998



## Português

**Cuidados e manutenção.** Não abra o controle remoto. Não contém peças que requeiram manutenção pelo usuário. Não deixe que a unidade seja afetada por umidade. A umidade causará corrosão na eletrônica interna. Para limpar a tela LCD, use um tecido seco. Quaisquer alterações ou modificações não aprovadas expressamente pela Logitech<sup>®</sup> Inc. anulam a autoridade do usuário para operar o equipamento e pode anular a garantia.

**Instruções para o descarte da bateria.** Este dispositivo contém uma bateria de íon de lítio interna recarregável não substituível. A vida útil da bateria depende do uso. O uso diário intenso resultará em uma vida útil mais curta. O uso ocasional estenderá a vida útil. Se achar que a bateria está esgotada, experimente carregá-la. Se não se recarregar, contate o Atendimento ao Cliente do Logitech<sup>®</sup> Harmony<sup>™</sup> para obter informações sobre reparo ou substituição. Consulte as leis e os regulamentos locais para o recolhimento adequado de baterias em sua região. Se não houver regulamentos locais referentes a descarte de baterias, deposite as baterias esgotadas em uma lixeira destinada a dispositivos eletrônicos.

**AVISO:** a bateria utilizada neste dispositivo pode apresentar risco de fogo ou queimadura química se manuseada indevidamente. Não desmonte, exponha a temperatura acima de 54° C, incinere ou mergulhe em água ou líquido de qualquer tipo. Não use ou carregue a bateria se houver vazamento ou se estiver descolorada, deformada ou apresentar qualquer anomalia. Não deixe a bateria descarregada ou sem uso por períodos de tempo longos. Quando usada incorretamente, pode explodir ou vazar, causando queimaduras e lesão pessoal. Se a bateria vazar, adote a precaução normal e descarte-a imediatamente de acordo com as leis e os regulamentos que norteiam o descarte de baterias na região. Lembre-se de que o vazamento de uma bateria pode causar queimaduras de pele ou outros ferimentos. Mantenha esta e todas as baterias fora do alcance de crianças. Risco de explosão se a bateria for substituída por um tipo incorreto.

**Aviso sobre sistema de alimentação:** o sistema de alimentação para este produto destina-se apenas a uso em local fechado. Use o sistema de alimentação que acompanha o produto; não use qualquer outro. Não use um sistema de alimentação danificado nem tente consertar um que esteja danificado. Não mergulhe o sistema de alimentação em

água nem o submeta a maltrato. Inspeccione o sistema de alimentação regularmente para verificar se o cabo, a tomada e a estrutura estão danificados.

**Declaração Consultiva e de Cumprimento com FCC (Federal Communications Commission).** Este equipamento foi testado e considerado estar em conformidade com os limites de dispositivos digitais de Classe B, de acordo com o capítulo 15 dos regulamentos da FCC. Esses limites destinam-se a propiciar razoável proteção contra interferências nocivas em uma instalação residencial. Este equipamento gera, usa e pode radiar energia de radiofrequência, e, se não for instalado ou usado de acordo com o manual de instruções, poderá causar interferência nociva a comunicações de rádio. No entanto, não há garantia de que não ocorrerá interferência em uma determinada instalação. Se este equipamento causar interferência nociva à recepção de rádio ou televisão, o que se pode verificar ligando e desligando o equipamento, recomenda-se ao usuário tentar corrigir a interferência adotando um dos dois procedimentos seguintes:

- Reoriente ou reposicione a antena de recepção
- Aumente a distância entre o equipamento e o receptor
- Conecte o equipamento a uma tomada com um circuito diferente daquele em que o receptor está conectado.

Consulte o revendedor ou um técnico experiente em rádio e TV para obter ajuda.

**Aviso:** alterações ou modificações não aprovadas expressamente pela Logitech podem anular a autoridade do usuário para operar o equipamento. No caso em que cabos de interface blindados são fornecidos com o produto ou componentes ou acessórios especificados destinados ao uso com a instalação do produto, eles devem ser usados para assegurar a conformidade com os regulamentos da FCC. Este dispositivo está em conformidade com o capítulo 15 dos regulamentos da FCC. O funcionamento está sujeito às duas condições seguintes: 1) este dispositivo pode não causar interferência nociva e 2) este dispositivo deve aceitar qualquer interferência recebida, inclusive interferência que pode perturbar o funcionamento.

**Conformidade da Logitech.** Seu produto está em conformidade com FCC. Para obter mais informações, consulte o sistema de Ajuda do software ou on-line em [www.logitech.com/compliance](http://www.logitech.com/compliance).

## Garantia Limitada de equipamento da Logitech

A Logitech garante ao comprador original que o seu produto de hardware da Logitech será isento de defeitos de material e fabrico durante um período de tempo, identificado no pacote do produto e/ou incluído na documentação do utilizador, a partir da data de compra. Também pode encontrar esta informação, seleccionando o seu produto na secção Suporte Online do seu Web site em [www.logitech.com/support](http://www.logitech.com/support). Salvo proibição pela lei aplicável, a presente garantia não é transmissível e encontra-se limitada para o comprador original. A presente garantia confere direitos específicos ao utilizador e o mesmo poderá igualmente possuir outros direitos que variam ao abrigo das leis locais.

Remédios jurídicos: A responsabilidade total da Logitech e seu exclusivo remédio jurídico para qualquer quebra de garantia deverão ser, a critério da Logitech, (1) consertar ou substituir o equipamento ou (2) reembolsar o preço pago, desde que o equipamento seja devolvido ao local onde foi comprado ou em outro local determinado pela Logitech com uma cópia da nota fiscal ou recibo datado. Taxas de manipulação e remessa poderão ser aplicáveis, exceto quando proibido pelas leis locais. A Logitech poderá, a seu critério, usar peças novas, usadas ou reconicionadas em bom estado de funcionamento para reparar ou substituir qualquer equipamento. Qualquer equipamento substituído terá garantia durante o restante do período original da garantia ou trinta (30) dias, o que for mais longo, ou durante qualquer período adicional que possa ser aplicável na sua jurisdição.

Esta garantia não cobre problemas ou danos resultantes de (a) acidente, abuso, mau uso ou qualquer reparo não autorizado, modificação ou desmontagem; (b) operação ou manutenção inadequada, uso que não está em conformidade com as instruções do produto ou voltagem incorreta; ou (c) uso de elementos, tais como baterias, não fornecidos pela Logitech, exceto quando essa restrição é proibida pela lei aplicável.

**Como obter assistência para garantia:** Recomendamos que, antes de enviar a reclamação de garantia, você visite a seção de assistência em [www.logitech.com/support](http://www.logitech.com/support) para obter assistência técnica. As reclamações de garantia válidas são geralmente processadas pelo local onde foi feita a compra durante os primeiros trinta (30) dias após a compra; entretanto, esse período pode variar, dependendo do local onde o produto foi comprado - para obter mais detalhes, entre em

contato com a Logitech ou com o varejista onde comprou o produto. As reclamações de garantia que não possam ser processadas pelo local de compra e quaisquer outras perguntas relacionadas ao produto devem ser enviadas diretamente a Logitech. Os endereços e informações de contato para atendimento ao cliente para a Logitech podem ser encontrados na documentação que acompanha seu produto e em [www.logitech.com/support](http://www.logitech.com/support).

**Limitação de responsabilidade:** A LOGITECH NÃO SERÁ RESPONSÁVEL POR NENHUM DANO ESPECIAL, INDIRETO, INCIDENTAL OU CONSEQÜENCIAL, INCLUINDO, MAS NÃO LIMITADO A PREJUÍZOS OU LUCROS, PERDA DE RECEITA OU DE DADOS (SEJA DE FORMA DIRETA OU INDIRETA) OU PREJUÍZO COMERCIAL POR QUEBRA DE QUALQUER GARANTIA EXPRESSA OU IMPLÍCITA NO SEU PRODUTO, MESMO SE A LOGITECH TENHA SIDO NOTIFICADA SOBRE A POSSIBILIDADE DE TAIS DANOS. Algumas jurisdições não permitem a exclusão ou a limitação de danos especiais, indiretos, incidentais ou seqüenciais, de modo que a limitação ou a exclusão acima pode não se aplicar a você.

**Duração de garantias implícitas:** EXCETO NA MEDIDA EM QUE PROIBIDO PELA LEI APLICÁVEL, QUALQUER CONDIÇÃO OU GARANTIA IMPLÍCITA OU ESTADO DA COMERCIALIZAÇÃO OU ADEQUADA PARA UM DETERMINADO FIM NESSE EQUIPAMENTO É LIMITADA EM DURAÇÃO À DURAÇÃO DO PERÍODO DE GARANTIA LIMITADA APLICÁVEL PARA O SEU PRODUTO. Algumas jurisdições não permitem a exclusão ou a limitação de danos especiais, indiretos, incidentais ou seqüenciais, de modo que a limitação ou a exclusão acima pode não se aplicar a você.

**Direitos estatutários nacionais:** Os consumidores possuem direitos legais segundo a legislação nacional aplicável que rege a venda de produtos ao consumidor. Esses direitos não são afetados pelas garantias nesta Garantia Limitada.

**Nenhuma outra garantia:** Nenhum revendedor, agente ou funcionário da Logitech está autorizado a fazer qualquer modificação, extensão ou acréscimo a esta garantia.

**Período de garantia:** Observe que, na União Européia, qualquer período de garantia inferior a dois anos deve ser aumentado para dois anos.

**Endereço da Logitech:** Logitech, Inc. 7600 Gateway Boulevard, Newark, California 94560-9998 – U.S.A.