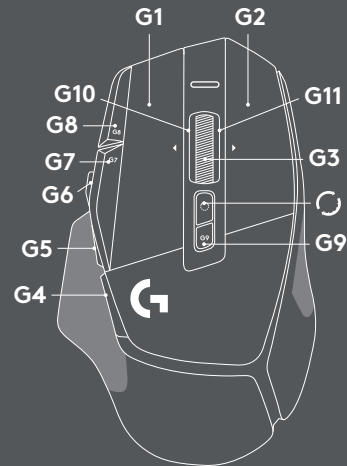
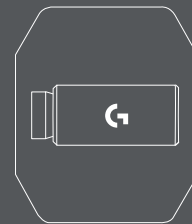


G502

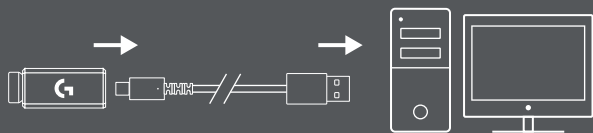
Setup Guide | Setup Guide



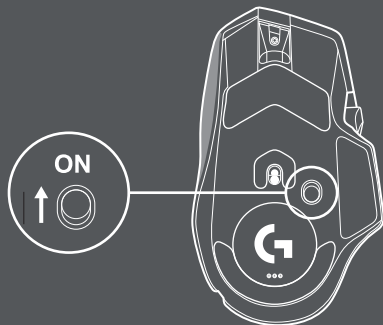
logitech 

1

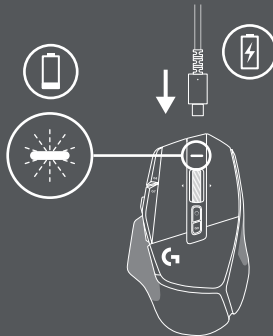
PLEASE READ THE INSTRUCTIONS BEFORE OPERATING THE PRODUCT
PLEASE READ THE INSTRUCTIONS BEFORE OPERATING THE PRODUCT



2



3



G1:

G7: DPI



G2:

G8: DPI



G3:

G9: ?



G4:

G10: <-



G5:

G11: ->



G6:

400 DPI



G8:



G10:

© 2021 Logitech. Logitech, Logitech G and the Logitech and Logitech G logos are trademarks or registered trademarks of Logitech Europe S.A. and/or its affiliates in the U.S. and other countries. All other trademarks are the property of their respective owners. Logitech assumes no responsibility for any errors that may appear in this manual. Information contained herein is subject to change without notice.

© 2021 Logitech. Logitech, Logitech G and the Logitech and Logitech G logos are trademarks or registered trademarks of Logitech Europe S.A. and/or its affiliates in the U.S. and other countries. All other trademarks are the property of their respective owners. Logitech assumes no responsibility for any errors that may appear in this manual. Information contained herein is subject to change without notice.