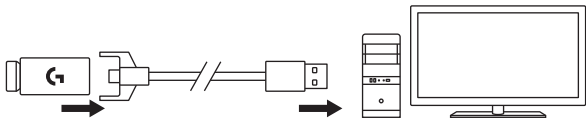


G703 LIGHTSPEED

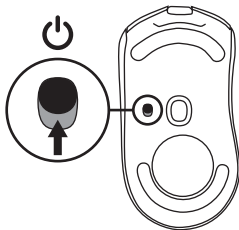
Setup Guide | Guide d'installation

PLEASE READ THE INSTRUCTIONS BEFORE OPERATING THE PRODUCT
FAVOR DE LEER EL INSTRUCTIVO ANTES DE INSTALAR Y OPERAR EL PRODUCTO

1

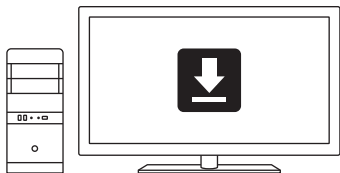


2

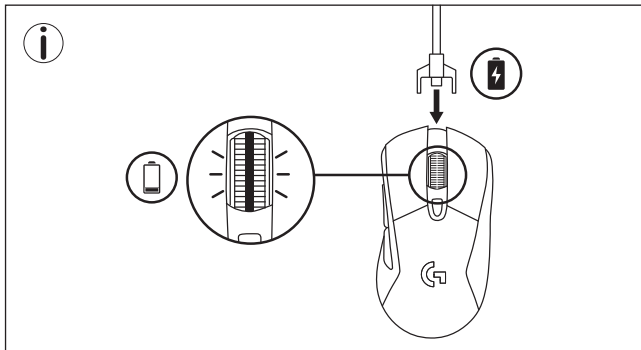


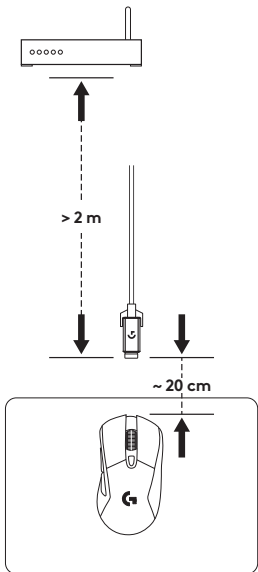
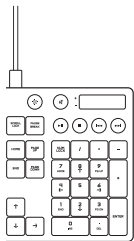
logitech 

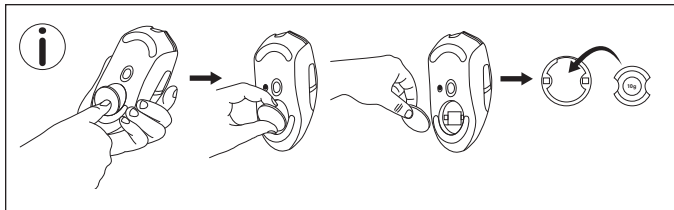
3



www.logitechG.com/GHUB







EU Directive 2014/53/EU:

MR0080-Proprietary 2.4GHz (2400 - 2483.5 MHz): 2402 - 2481MHz; 9.16 dBm

MR0080-Bluetooth LE 1M BT 5.0 (2400 - 2483.5 MHz): 2402 - 2480 MHz; 8.78 dBm

MR0080-Bluetooth LE 2M BT 5.0 (2400 - 2483.5 MHz): 2402 - 2480 MHz; 8.56 dBm

C-U0008-Proprietary 2.4GHz (2400 - 2483.5 MHz): 2402 - 2481 MHz; -0.21dBm

M/N: C-U0008 CFT:RCPLOCU11-0321

M/N: MR0080



NTC

Type Accepted

No.:ESD-1918825C

M/N: C-U0008



0899-11-03229

M/N: C-U0008



NTC

Type Accepted

No.:ESD-1612373C

© 2019 Logitech, Logi and the Logitech Logo are trademarks or registered trademarks of Logitech Europe S.A. and/or its affiliates in the U.S. and other countries. All other trademarks are the property of their respective owners. Logitech assumes no responsibility for any errors that may appear in this manual. Information contained herein is subject to change without notice.

© 2019 Logitech, Logi et le logo Logitech sont des marques commerciales ou déposées de Logitech Europe S.A. et/ou de ses sociétés affiliées aux États-Unis et dans d'autres pays. Toutes les autres marques sont la propriété exclusive de leurs détenteurs respectifs. Logitech décline toute responsabilité en cas d'erreurs dans ce manuel. Les informations énoncées dans le présent document peuvent faire l'objet de modifications sans avis préalable.

620-009110.007