

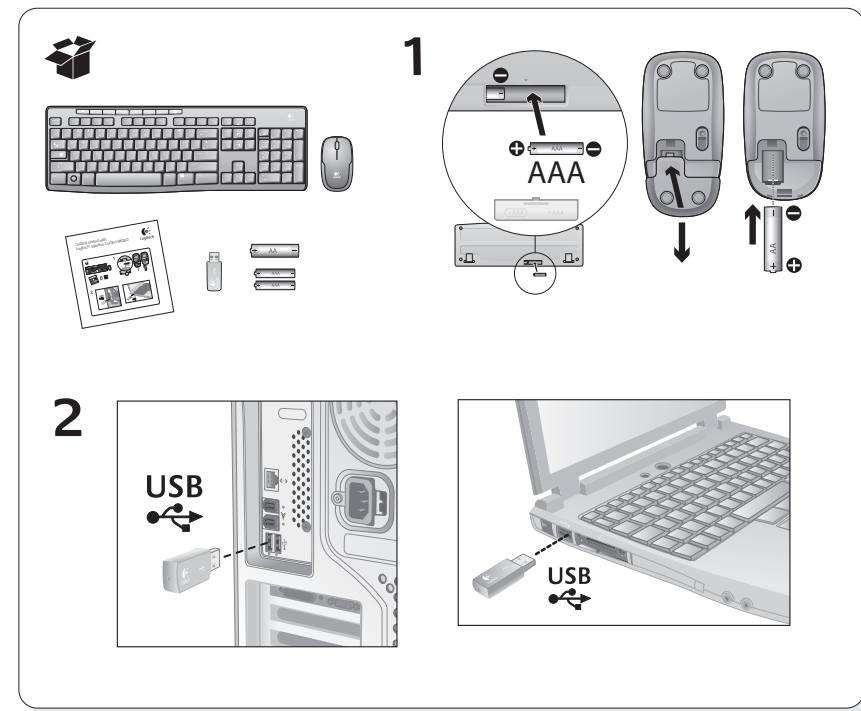


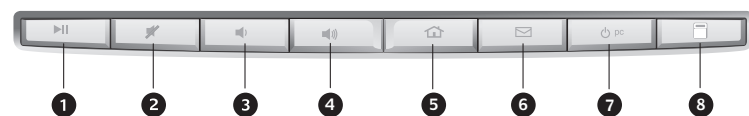
<b>BRAND / LAUNCH:</b> Logitech 2009		<b>PROJECT TITLE:</b> Sanya		<b>DETAILS:</b> AMR / GSW Guide	
<b>COLOR SPECIFICATIONS</b>	<b>SPOT COLORS</b>	<b>DIE LINE COLOR (NO PRINT)</b>	<b>PROCESS COLORS</b>		
	<b>DIE LINES</b>				
<b>DIELINE NAME:</b> n/a		<b>DIELINE RECEIVED:</b> n/a			
<b>SPECIFICATIONS / NOTES:</b> Final files Job is grey scale		<b>THIS PRINT SIZE / SCALE:</b> 100% of original		<b>Designer:</b> Gregory Gomez <b>Location:</b> Fremont, CA, USA	
<b>MODIFICATION DATE:</b> March 23, 2010					

## Getting started with Logitech® Wireless Combo MK260

M/N: M-R0020



## 3



### English

- Features**
1. Play track
  2. Mute volume
  3. Decrease volume
  4. Increase volume
  5. Navigate to Internet home
  6. Launch email application
  7. Place PC in standby mode
  8. Launch calculator

### Español

- Features**
1. Play track
  2. Mute volume
  3. Decrease volume
  4. Increase volume
  5. Navigate to Internet home
  6. Launch email application
  7. Place PC in standby mode
  8. Launch calculator

### Français

- Features**
1. Play track
  2. Mute volume
  3. Decrease volume
  4. Increase volume
  5. Navigate to Internet home
  6. Launch email application
  7. Place PC in standby mode
  8. Launch calculator

### Português

- Features**
1. Play track
  2. Mute volume
  3. Decrease volume
  4. Increase volume
  5. Navigate to Internet home
  6. Launch email application
  7. Place PC in standby mode
  8. Launch calculator

## 4

### English

#### Help with setup

- Check the battery installation in the keyboard and mouse, or replace the batteries.
- Plug the receiver into a different USB port. Remove any metal object between the receiver and the keyboard/mouse that may interfere with reception.
- Try moving the keyboard/mouse closer to the receiver.
- If the receiver is plugged into a USB hub, try plugging it directly into your computer.
- Restart the computer.
- If these suggestions don't work, download the Reconnection Utility from [http://www.logitech.com/connect\\_utility](http://www.logitech.com/connect_utility).

### Français

#### Help with setup

- Check the battery installation in the keyboard and mouse, or replace the batteries.
- Plug the receiver into a different USB port. Remove any metal object between the receiver and the keyboard/mouse that may interfere with reception.
- Try moving the keyboard/mouse closer to the receiver.
- If the receiver is plugged into a USB hub, try plugging it directly into your computer.
- Restart the computer.
- If these suggestions don't work, download the Reconnection Utility from [http://www.logitech.com/connect\\_utility](http://www.logitech.com/connect_utility).

### Español

#### Help with setup

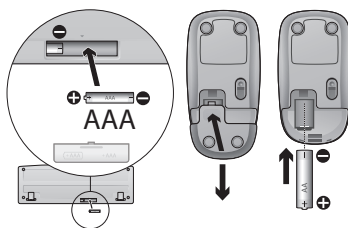
- Check the battery installation in the keyboard and mouse, or replace the batteries.
- Plug the receiver into a different USB port. Remove any metal object between the receiver and the keyboard/mouse that may interfere with reception.
- Try moving the keyboard/mouse closer to the receiver.
- If the receiver is plugged into a USB hub, try plugging it directly into your computer.
- Restart the computer.
- If these suggestions don't work, download the Reconnection Utility from [http://www.logitech.com/connect\\_utility](http://www.logitech.com/connect_utility).

### Português

#### Help with setup

- Check the battery installation in the keyboard and mouse, or replace the batteries.
- Plug the receiver into a different USB port. Remove any metal object between the receiver and the keyboard/mouse that may interfere with reception.
- Try moving the keyboard/mouse closer to the receiver.
- If the receiver is plugged into a USB hub, try plugging it directly into your computer.
- Restart the computer.
- If these suggestions don't work, download the Reconnection Utility from [http://www.logitech.com/connect\\_utility](http://www.logitech.com/connect_utility).

## 5



### Replacing mouse battery:

1. Press on battery compartment door and slide down to open.
2. Remove old battery.
3. Follow diagram in battery compartment to insert one new AAA battery. Close battery compartment.

### Français

#### Replacing keyboard batteries:

1. Open battery compartment on keyboard bottom.
2. Remove old batteries.
3. Wait 15 seconds before inserting the new batteries to allow the keyboard to reset.
4. Follow diagram in battery compartment to insert two new AAA batteries in keyboard. Close battery compartment.

#### Replacing mouse battery:

1. Press on battery compartment door and slide down to open.
2. Remove old battery.
3. Follow diagram in battery compartment to insert one new AAA battery. Close battery compartment.

### Português

#### Replacing keyboard batteries:

1. Open battery compartment on keyboard bottom.
2. Remove old batteries.
3. Wait 15 seconds before inserting the new batteries to allow the keyboard to reset.
4. Follow diagram in battery compartment to insert two new AAA batteries in keyboard. Close battery compartment.

#### Replacing mouse battery:

1. Press on battery compartment door and slide down to open.
2. Remove old battery.
3. Follow diagram in battery compartment to insert one new AAA battery. Close battery compartment.

### English

#### Replacing keyboard batteries:

1. Open battery compartment on keyboard bottom.
2. Remove old batteries.
3. Wait 15 seconds before inserting the new batteries to allow the keyboard to reset.
4. Follow diagram in battery compartment to insert two new AAA batteries in keyboard. Close battery compartment.

#### Replacing mouse battery:

1. Press on battery compartment door and slide down to open.
2. Remove old battery.
3. Follow diagram in battery compartment to insert one new AAA battery. Close battery compartment.

### Español

#### Replacing keyboard batteries:

1. Open battery compartment on keyboard bottom.
2. Remove old batteries.
3. Wait 15 seconds before inserting the new batteries to allow the keyboard to reset.
4. Follow diagram in battery compartment to insert two new AAA batteries in keyboard. Close battery compartment.

Region	Sales Office Address	Technical Help
<b>Logitech Far East Ltd.</b> 羅技電子股份有限公司	6F-4, No. 123, Sec. 4, Pa-Teh Road, Taipei, Taiwan 臺北市八德路四段123號6樓之4 ☎ 886-2-2746-6601 ☉ 星期一至五，上午九時至 下午六時正	☎ 0800-012 300(免付費) ☉ 星期一至五，上午九時至下午六時正
<b>Logitech Singapore Pte Ltd.</b>	1 Maritime Square #09-31/32 HarbourFront Centre (Lobby A) Singapore 099253 ☎ 65-6270 5515 ☉ Monday - Friday, 9am - 6pm	☎ 800-60-11-372 (Toll free for Singapore Only) ☎ 1800 88 0719 (for Malaysia, Thailand, Indonesia, Indochina) ☉ Monday - Friday, 9am - 6pm
<b>罗技(北京)贸易有限公司 上海分公司</b>	上海市宝庆路1号菱美大厦801室 ☎ 86-21-6471 1188 ☉ 星期一至五，上午九时至 下午五时三十分	☎ 800-820-0338 (固定电话-免付费) ☎ 400-820-0338 (移动电话-需付本地话费) ☉ 星期一至五，上午九时至下午六时正
<b>罗技(北京)贸易有限公司</b>	北京市朝阳区光华路甲8号 和乔大厦A座325室 ☎ 86-10-6581 3833 ☉ 星期一至五，上午九时至 下午五时三十分	☎ 800-820-0338 (固定电话-免付费) ☎ 400-820-0338 (移动电话-需付本地话费) ☉ 星期一至五，上午九时至下午六时正
<b>Logitech Australia Computer Peripherals Pty Ltd.</b>	Suite 51, 7 Narabang Way Belrose NSW 2085 Australia ☎ 61-2-9479 0800 ☉ Monday - Friday, 9am - 5pm (AEST)	☎ Australia:1800 025 544 (Toll Free) ☎ Monday - Friday, 9am - 8pm (AEST) ☎ New Zealand: 800 447 361 (Toll Free) ☉ Monday - Friday, 11am - 7pm (Auckland Time)
<b>Logitech Electronic India PVT Ltd</b>	MMTC House, Suite 603, 6th Floor C-22, Bandra Kurla Complex, Bandra East Mumbai 400 051, India ☎ 91-22-2657 1160 ☉ Monday - Friday, 9.30am - 6.30pm (IST)	☎ 000 800 600 1133 (Toll free) ☉ Monday - Friday, 9.30am - 6.30pm (IST)
<b>World Wide Web:</b> <a href="http://www.logitech.com">http://www.logitech.com</a> <b>FTP:</b> <a href="ftp://ftp.logitech.com/pub">ftp://ftp.logitech.com/pub</a>		

**Japan**  
Logicoo Co., Ltd.  
Technical Support Center Address  
KDC Sasazuka Bldg.,  
1-54-5 Sasazuka, Shibuya-ku,  
Tokyo 151-0073 Japan

**Technical Help**  
Tel: 03-5350-6490  
Fax: 03-3375-6490  
Monday to Friday  
9:00am-12:00pm, 1:00pm - 5:00pm

產品名稱		低功率射頻電機		低功率射頻電機		低功率射頻電機	
產品名稱	低功率射頻電機	產品名稱	低功率射頻電機	產品名稱	低功率射頻電機	產品名稱	低功率射頻電機
型號	型號	型號	型號	型號	型號	型號	型號
電壓	電壓	電壓	電壓	電壓	電壓	電壓	電壓
電流	電流	電流	電流	電流	電流	電流	電流
電阻	電阻	電阻	電阻	電阻	電阻	電阻	電阻
電容	電容	電容	電容	電容	電容	電容	電容
電感	電感	電感	電感	電感	電感	電感	電感
電熱	電熱	電熱	電熱	電熱	電熱	電熱	電熱
電磁	電磁	電磁	電磁	電磁	電磁	電磁	電磁
電光	電光	電光	電光	電光	電光	電光	電光
電聲	電聲	電聲	電聲	電聲	電聲	電聲	電聲
電熱	電熱	電熱	電熱	電熱	電熱	電熱	電熱
電磁	電磁	電磁	電磁	電磁	電磁	電磁	電磁
電光	電光	電光	電光	電光	電光	電光	電光
電聲	電聲	電聲	電聲	電聲	電聲	電聲	電聲



1. 安裝: 請參閱本說明書第 10 頁。  
2. 檢查: 請參閱本說明書第 11 頁。



1. 安裝: 請參閱本說明書第 10 頁。  
2. 檢查: 請參閱本說明書第 11 頁。



1. 安裝: 請參閱本說明書第 10 頁。  
2. 檢查: 請參閱本說明書第 11 頁。

Complies with  
IDA Standards  
DB11104

당해 무선설비는 전파혼신  
가능성이 있으므로 인명안전과  
관련된 서비스는 할 수 없음

依據台灣「低功率射頻電機管理辦法」規定：

第十二條 經型式認證合格之低功率射頻電機，非經許可，公司、商號或使用者均不得擅自變更頻率、加大功率或變更原設計之特性及功能。

第十四條 低功率射頻電機之使用不得影響兩航空安全及干擾合法通信；經發現有干擾現象時，應立即停用，並改善至無干擾時方得繼續使用。前項合法通信，指依電信法規定作業之無線電通信。低功率射頻電機須忍受合法通信或工業、科學及醫療用電波頻率性電機設備之干擾。

© 2010 Logitech. All rights reserved. Logitech, the Logitech logo, and other Logitech marks are owned by Logitech and may be registered. All other trademarks are the property of their respective owners. Logitech assumes no responsibility for any errors that may appear in this manual. Information contained herein is subject to change without notice.

620-002798.002

#### **Federal Communication Commission Interference Statement**

This equipment has been tested and found to comply with the limits for a Class B digital device, pursuant to Part 15 of the FCC Rules. These limits are designed to provide reasonable protection against harmful interference in a residential installation. This equipment generates, uses and can radiate radio frequency energy and, if not installed and used in accordance with the instructions, may cause harmful interference to radio communications. However, there is no guarantee that interference will not occur in a particular installation. If this equipment does cause harmful interference to radio or television reception, which can be determined by turning the equipment off and on, the user is encouraged to try to correct the interference by one of the following measures:

- Reorient or relocate the receiving antenna.
- Increase the separation between the equipment and receiver.
- Connect the equipment into an outlet on a circuit different from that to which the receiver is connected.
- Consult the dealer or an experienced radio/TV technician for help.

**FCC Caution: Any changes or modifications not expressly approved by the party responsible for compliance could void the user's authority to operate this equipment.**

**This device complies with Part 15 of the FCC Rules. Operation is subject to the following two conditions: (1) This device may not cause harmful interference, and (2) this device must accept any interference received, including interference that may cause undesired operation.**

#### **Industry Canada Statement**

This device complies with RSS-210 of the Industry Canada Rules. Operation is subject to the following two conditions:

- 1) this device may not cause interference and
- 2) this device must accept any interference, including interference that may cause undesired operation of the device