



**User manual**  
**2.4GHz Cordless Mouse &  
Transceiver**  
**M/N:M-RBY125 &C-U0004**

Logitech®



**Thank you!**

**¡Gracias!**

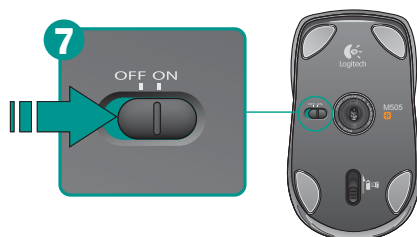
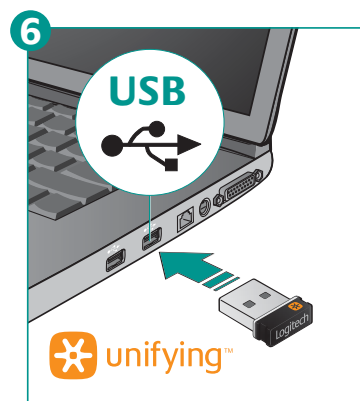
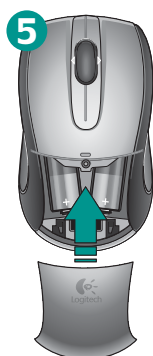
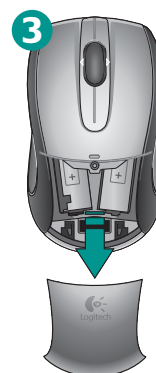
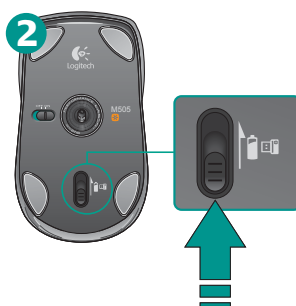
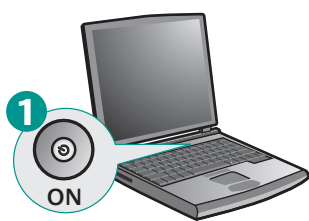
**Merci!**

**Obrigado!**



AA





### English

**Mac® OS X Users:** When plugging in the Unifying receiver, the Keyboard Assistant dialog box may appear. You can just close this window.

### Español

**Usuarios de Mac® OS X:** Al conectar el receptor Unifying, puede aparecer la ventana del cuadro de diálogo Asistente Configuración Teclado. Puedes cerrar esta ventana.

### Français

**Utilisateurs Mac® OS X:** lorsque vous branchez le récepteur Unifying, la boîte de dialogue de l'assistant de configuration du clavier peut s'afficher. Vous pouvez simplement fermer cette boîte de dialogue.

### Português

**Usuários do Mac® OS X:** Ao conectar o receptor Unifying, poderá ser exibida a janela da caixa de diálogo Assistente de instalação do teclado. Simplesmente feche a janela.

# 2

## English

Congratulations! You are now ready to use your mouse.

## Español

¡Enhorabuena! Ya puedes empezar a usar el mouse.

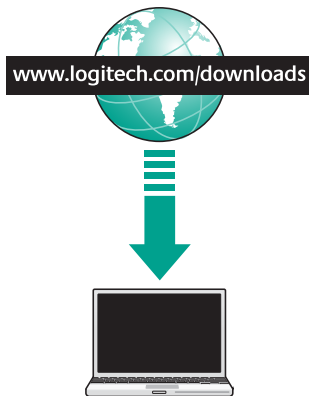
## Français

Félicitations ! Vous pouvez à présent utiliser la souris.

## Português

Parabéns! Agora você está preparado para usar seu mouse.

# 3



## English

**Advanced features.** Software is optional for this mouse! Download the free mouse software (Logitech® SetPoint® for Windows® or Logitech Control Center for Macintosh®) at **www.logitech.com/downloads** to enable side-to-side scrolling and middle button features.

## Español

**Funciones avanzadas.** El software es opcional para este mouse. Descarga el software de mouse gratuito (Logitech® SetPoint® para Windows® o Logitech Control Center para Macintosh®) en **www.logitech.com/downloads** para activar las funciones de desplazamiento horizontal y de botón central.

## Français

**Fonctions avancées.** Le logiciel de cette souris est disponible en option. Téléchargez-le gratuitement (Logitech® SetPoint® pour Windows® ou Logitech Control Center pour Macintosh®) sur **www.logitech.com/downloads** pour activer l'utilisation du défilement horizontal et du bouton central.

## Português

**Recursos avançados.** O software é opcional para este mouse! Faça o download gratuito do software do mouse (Logitech® SetPoint® para Windows® ou Logitech Control Center para Macintosh®) em **www.logitech.com/downloads** para ativar a rolagem horizontal e os recursos do botão do meio.