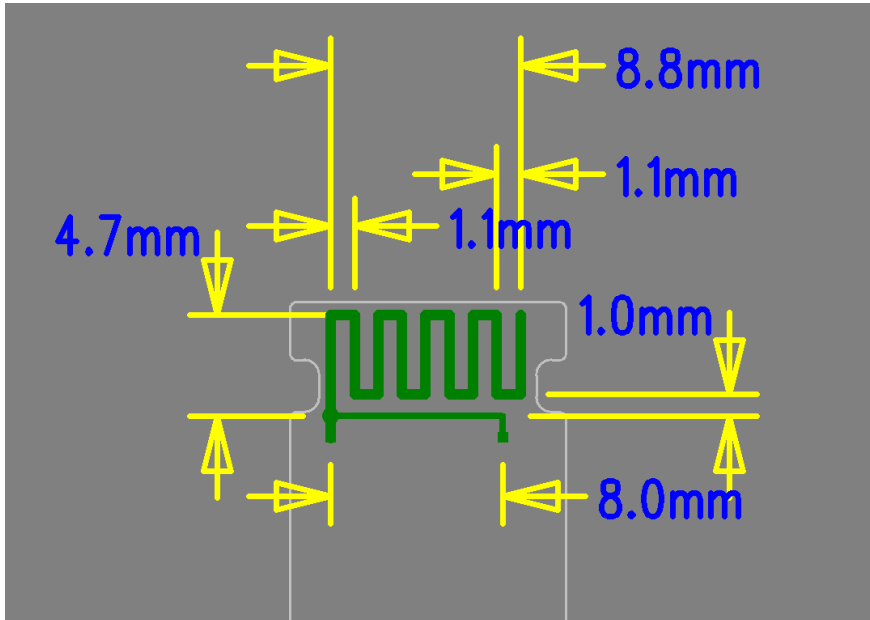


TW006 Receiver Antenna spec

BT (2402 MHz ~ 2480MHz)

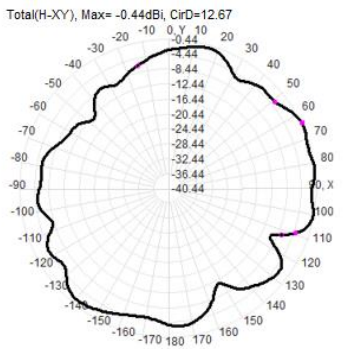
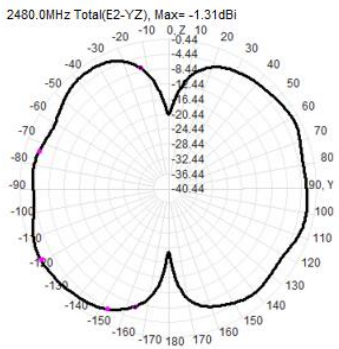
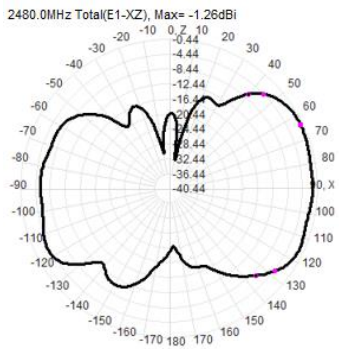
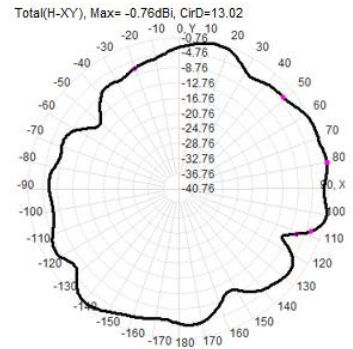
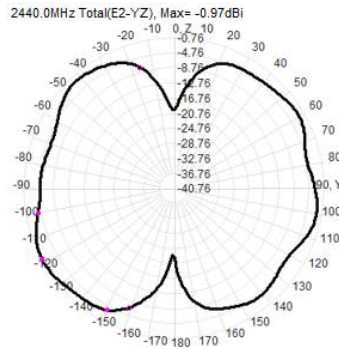
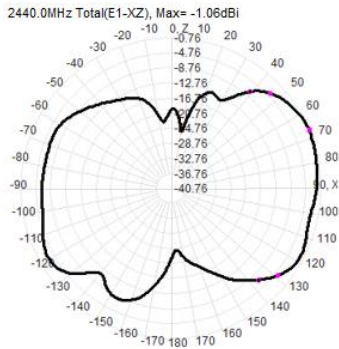
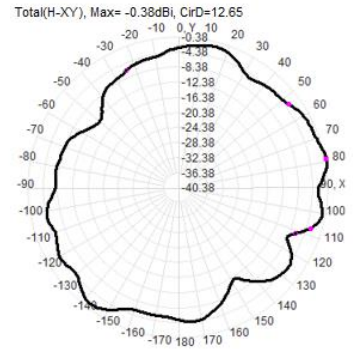
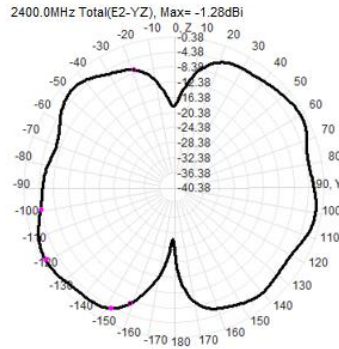
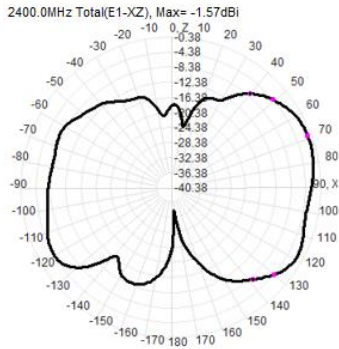


Antenna type: Monopole

ELECTRICAL CHARACTERISTICS (BT)

Frequency Range	2402 MHz ~ 2480MHz
Peak Gain	4.35dBi
Typ gain	4.04dBi
Impedance	50 Ω

BT Radiation pattern



BT 2.4G			
2400-2480 MHz			
Fre.(MHz)	Eff.(dB)	Eff.(%)	Gain(dBi)
2400	-4.18	38.18%	3.49
2410	-4.07	39.19%	3.71
2420	-3.96	40.18%	3.94
2430	-3.93	40.47%	4.07
2440	-3.92	40.57%	4.17
2450	-3.86	41.15%	4.32
2460	-3.83	41.38%	4.35
2470	-3.94	40.40%	4.21
2480	-4.01	39.68%	4.11
ave	-3.97	40.13%	4.04