

Barbie®

Please keep these instructions for future reference, as they contain important information.

2 YEAR LIMITED WARRANTY

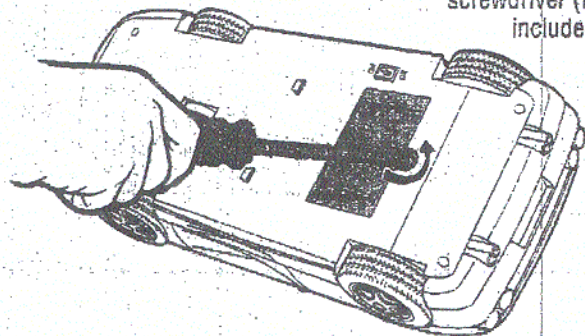
Mattel, Inc. warrants to the original consumer purchaser that this product will be free from defects in materials or workmanship for 2 years (unless otherwise specified in alternate warranties) from the date of purchase. If defective, return the product along with proof of the date of purchase, postage prepaid, to Consumer Adjustment Center, 15930 E. Valley Boulevard, City of Industry, CA 91744 for replacement or refund at our option. This warranty does not cover damage resulting from: unauthorized modification, accident, misuse or abuse. **VALID ONLY IN U.S.A.** This warranty gives you specific legal rights and you may also have other rights which vary from state to state.

ADULT ASSEMBLY REQUIRED

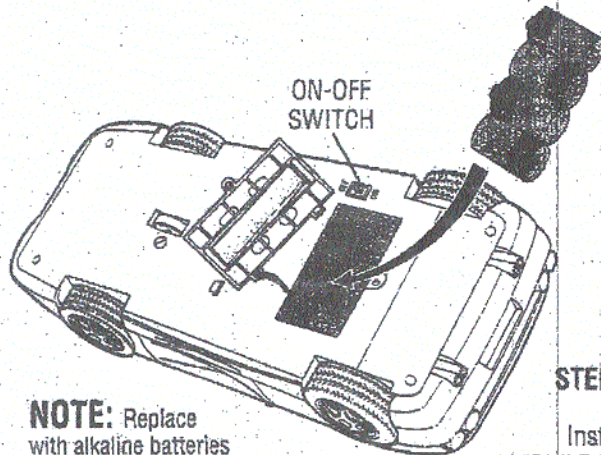
- Requires 4 X 1.5V "C" size (LR14) alkaline batteries (not included) in the vehicle.
- Requires one 9-volt (6LR61) alkaline battery (not included) in the transmitter.
- Tool needed for battery installation: Phillips head screwdriver (not included).

A. Vehicle

STEP 1
Unscrew the battery cover with the phillips head screwdriver (not included).



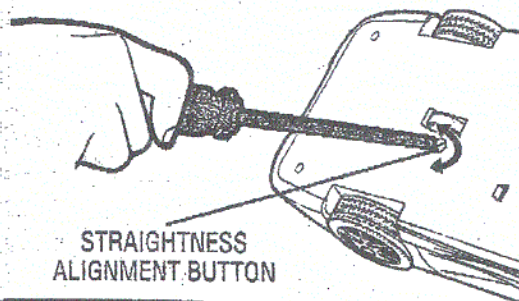
ON-OFF SWITCH



NOTE: Replace with alkaline batteries for longest life and best performance. Remember to take out all batteries from vehicle and transmitter if vehicle will not be used for a long period of time.

STEP 2
Install 4 "C" (LR14) alkaline batteries (not included) as shown.

Use flat head screwdriver (not included) to adjust the straightness alignment button on bottom of car if it does not travel forward in a straight line.

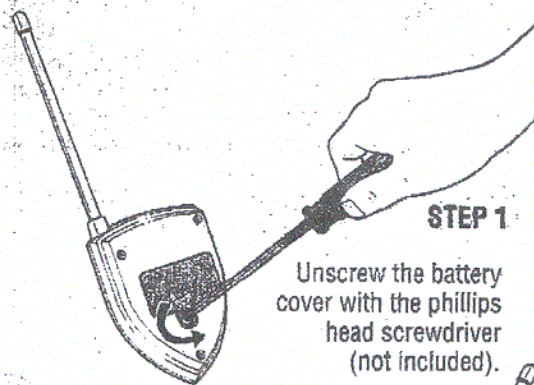


STRAIGHTNESS ALIGNMENT BUTTON

B. Transmitter

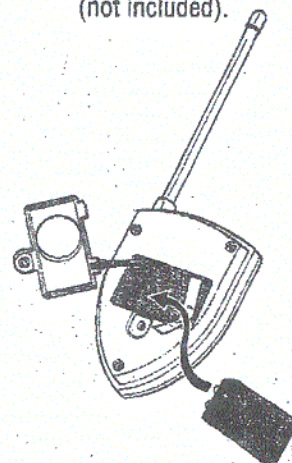
STEP 1

Unscrew the battery cover with the phillips head screwdriver (not included).



STEP 2

Install a 9-volt (6LR61) alkaline battery (not included) as shown.



© 2000 Mattel, Inc. All Rights Reserved.

® and TM designate U.S. trademarks of Mattel, Inc.

Retain this address for future reference:

Mattel U.K., Ltd., Vanwall Business Park, Maidenhead SL6 4UB

WARNING:

CHOKING HAZARD - Small parts.
Not for children under 3 years.

IMPORTANT NOTE: Turn off the power button when toy is not in use. This will prevent the batteries from draining.

67263-0700400

PRINTED IN CHINA

MATTEL ASIA PACIFIC
SOURCING LTD.

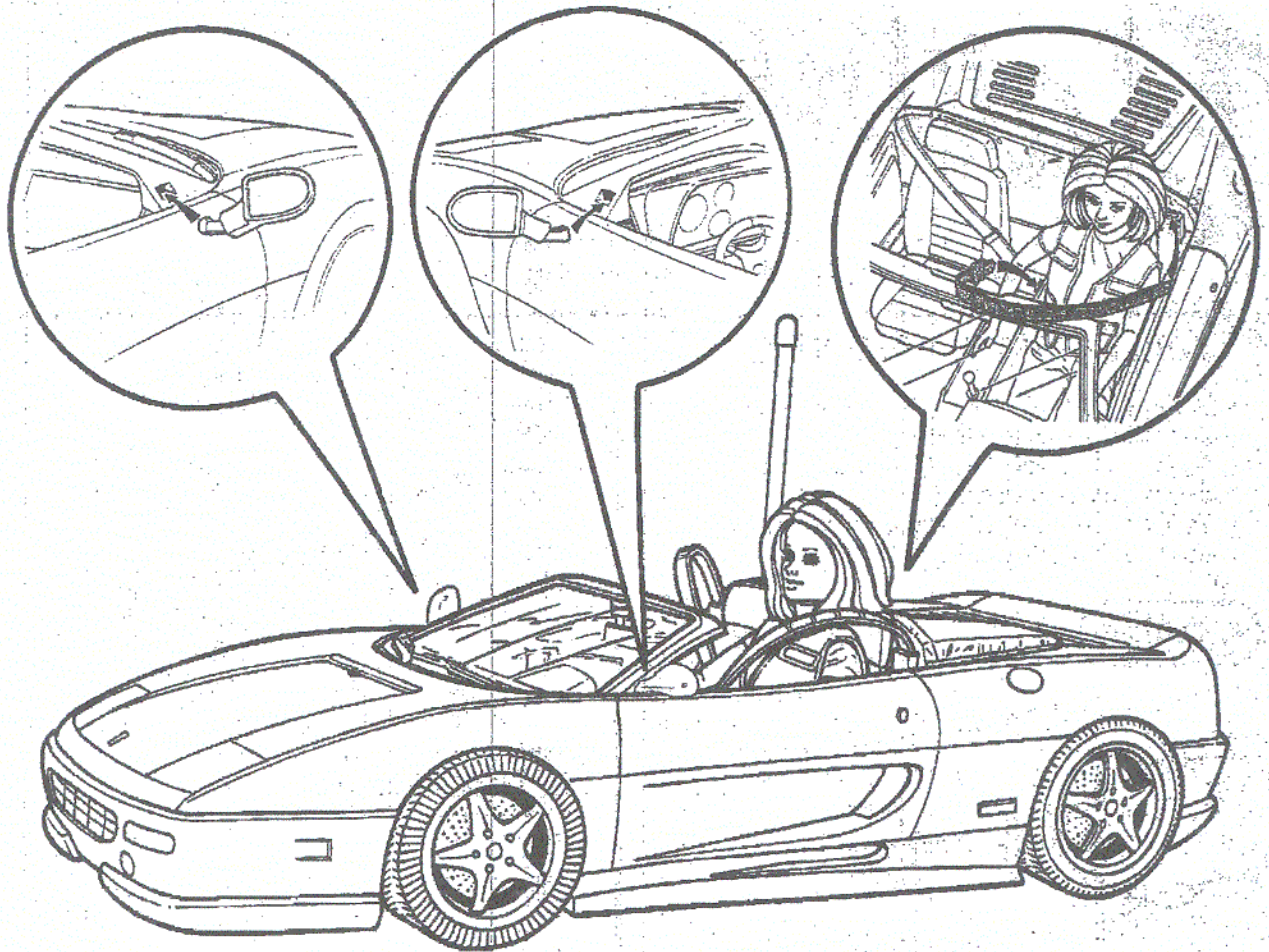
FCC ID : JNW67263T

EXHIBIT # : 4

KA KAH (CHINA)

22-MAR-2000 15:56

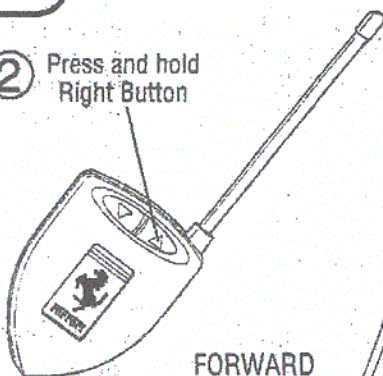
DOLL NOT INCLUDED



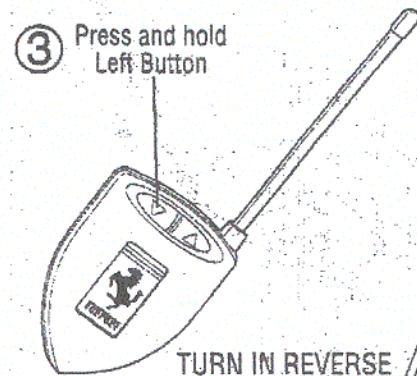
C. To use

① Switch the ON /OFF Button to turn the car "ON".

② Press and hold Right Button



③ Press and hold Left Button



NOTE: Remember to set the power switch on vehicle to "OFF" position when not in use.

CAUTION: Do not stall the motor during use.

IMPORTANT!

Radio interference can occur if more than one radio control car or another radio device is operating on the same frequency. Radio interference can cause your car to work erratically. For best performance please be sure to maintain a distance from or do not operate this toy near:

- Other radio devices such as nursery monitors, cordless telephones or other radio-control cars on the same frequency.
- High voltage electrical wires, reinforced concrete buildings or CB radios.

BATTERY SAFETY INFORMATION

1. Non-rechargeable batteries are not to be recharged.
2. Rechargeable batteries are to be removed from the toy before being charged.
3. Rechargeable batteries are only to be charged under adult supervision.
4. Do not mix alkaline, standard (carbon-zinc), or rechargeable (nickel-cadmium) batteries.
5. Do not mix old and new batteries.
6. Only batteries of the same or equivalent type as recommended are to be used.
7. Batteries are to be inserted with the correct polarity.
8. Exhausted batteries are to be removed from the toy.
9. The supply terminals are not to be short-circuited.
10. Dispose of battery(ies) safely.

DRIVING TIPS:

- The toy can have a better performance on vinyl floor. Thick carpets are not recommended since carpet does not provide suitable traction and lint from carpet may damage vehicle.
- Operating multiple vehicles with the same frequency in close proximity will cause interference and poor performance.
- Works best away from high voltage power lines, large buildings and walls.
- Hold the transmitter antenna up for best performance.
- When the product does not respond, slows down, or loses range, replace the batteries.
- This product is not recommended for use on loose dirt or wet surfaces.
- Do not immerse in water.

FCC Note (United States Only)

This device complies with Part 15 of the FCC rules. Operation is subject to the following two conditions:

1. This device may not cause harmful interference.
2. This device must accept any interference received, including interference that may cause undesired operation.

COMPLIANCE WITH FCC REGULATIONS

This product generates and uses radio frequency energy and if not used properly may cause interference to radio and television reception. It has been tested and found to comply with the limits set by the FCC, which are designed to provide

reasonable protection against such interference. However, there is no guarantee that interference will not occur. If this equipment does cause interference to radio or television reception, the user is encouraged to try to correct the interference by one or more of the following measures:

- Reorient the receiving antenna.
- Relocate the product with respect to the receiver.
- Move the product away from the receiver.

If necessary, the user should consult the dealer or an experienced radio / television technician for additional suggestions.

CAUTION: FCC regulations state that changes or modifications to this product, not expressly approved by the party responsible for compliance, could void the user's authority to operate the equipment.

TROUBLESHOOTING TIPS

Problem	Cause	Solution
No Power	<ul style="list-style-type: none"> • Batteries installed incorrectly • Dead batteries • ON / OFF button not turned on • Dirty battery contacts 	<ul style="list-style-type: none"> • Remove the car batteries and replace in correct orientation as shown inside the battery compartment. • Check to be sure transmitter battery contacts are fully snapped. • Replace car batteries with four new "C" alkaline batteries and / or the transmitter battery with a new 9-volt battery. • Switch the ON / OFF button. • Clean battery terminals.
Car goes slowly	<ul style="list-style-type: none"> • Car batteries weak 	<ul style="list-style-type: none"> • Replace car batteries with four new "C" alkaline batteries.
Car runs erratically or does not respond to signals from the transmitter	<ul style="list-style-type: none"> • Interference • Weak signal 	<ul style="list-style-type: none"> • Change your location. • Replace car batteries with four new "C" alkaline batteries and / or the transmitter battery with a new 9-volt battery. • Point the transmitter antenna upward. • Move the transmitter closer to the car. • Replace car batteries with four new "C" alkaline batteries and / or the transmitter battery with a new 9-volt battery.
Poor steering control	<ul style="list-style-type: none"> • Car batteries weak • Transmitter battery weak 	<ul style="list-style-type: none"> • Replace car batteries with four new "C" alkaline batteries. • Replace transmitter battery with a new 9-volt battery.
Head light becomes dim or goes out	<ul style="list-style-type: none"> • Car batteries weak 	<ul style="list-style-type: none"> • Replace car batteries with four new "C" alkaline batteries.