

## 20140919\_System Check\_Dipole2450 sn728

Frequency: 2450 MHz; Duty Cycle: 1:1; Room Ambient Temperature: 24.0°C; Liquid Temperature: 23.0°C

Medium parameters used (interpolated):  $f = 2450$  MHz;  $\sigma = 2.04$  mho/m;  $\epsilon_r = 52.1$ ;  $\rho = 1000$  kg/m<sup>3</sup> ;

DASY4 Configuration:

- Area Scan setting - Find Secondary Maximum Within: 2.0 dB and with a peak SAR value greater than 0.0012W/kg
- Electronics: DAE4 Sn558; Calibrated: 7/22/2014
- Probe: EX3DV4 - SN3979; ConvF(7.08, 7.08, 7.08); Calibrated: 3/4/2014
- Sensor-Surface: 2mm (Mechanical Surface Detection)
- Phantom: Flat Phantom ELI4.0; Type: QDOVA001BA; Serial: SN: 1052

**Body/Pin=100mW, d=10mm/Area Scan (8x9x1):** Measurement grid: dx=15mm, dy=15mm

[Info: Interpolated medium parameters used for SAR evaluation.](#)

Maximum value of SAR (measured) = 6.49 mW/g

**Body/Pin=100mW, d=10mm/Zoom Scan (7x7x7)/Cube 0:** Measurement grid: dx=5mm, dy=5mm, dz=5mm

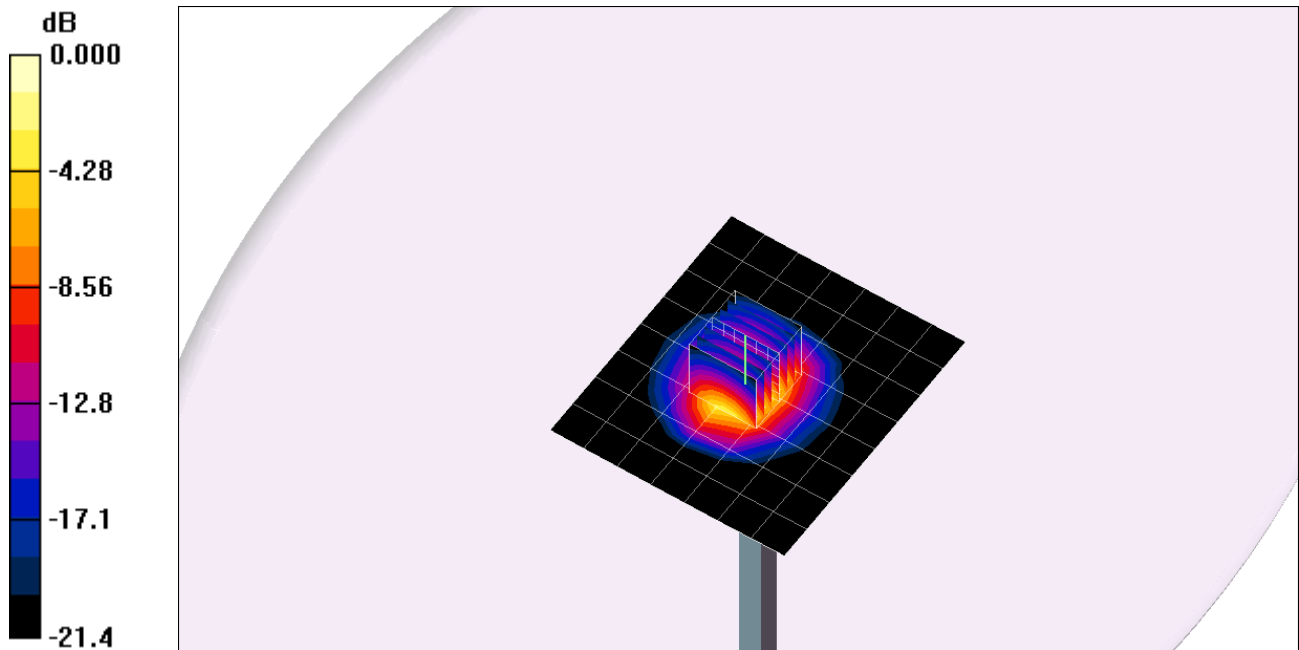
Reference Value = 56.3 V/m; Power Drift = -0.036 dB

Peak SAR (extrapolated) = 9.86 W/kg

**SAR(1 g) = 4.81 mW/g; SAR(10 g) = 2.25 mW/g**

[Info: Interpolated medium parameters used for SAR evaluation.](#)

Maximum value of SAR (measured) = 7.34 mW/g



0 dB = 7.34mW/g

### 20140919\_System Check\_Dipole2450 sn728

Frequency: 2450 MHz; Duty Cycle: 1:1

**Body/Pin=100mW, d=10mm/Z Scan (1x1x21):** Measurement grid: dx=20mm, dy=20mm, dz=5mm

Info: [Interpolated medium parameters used for SAR evaluation.](#)

Maximum value of SAR (measured) = 6.36 mW/g

