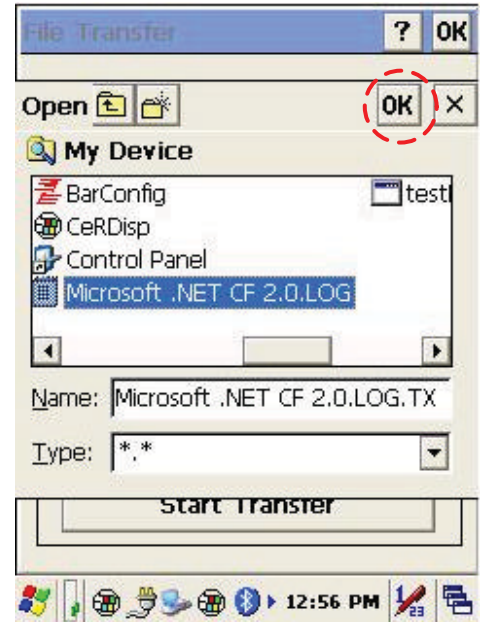
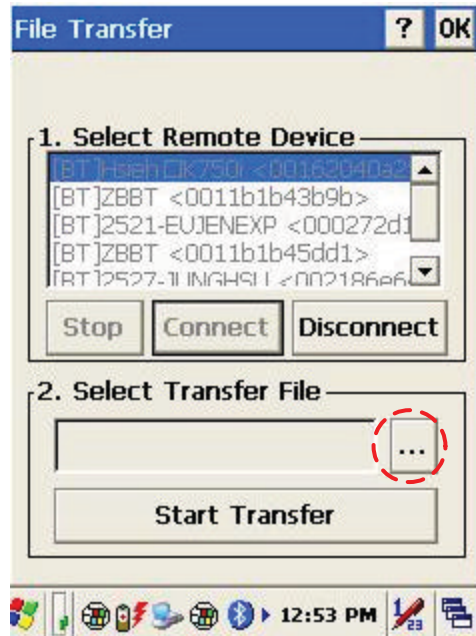
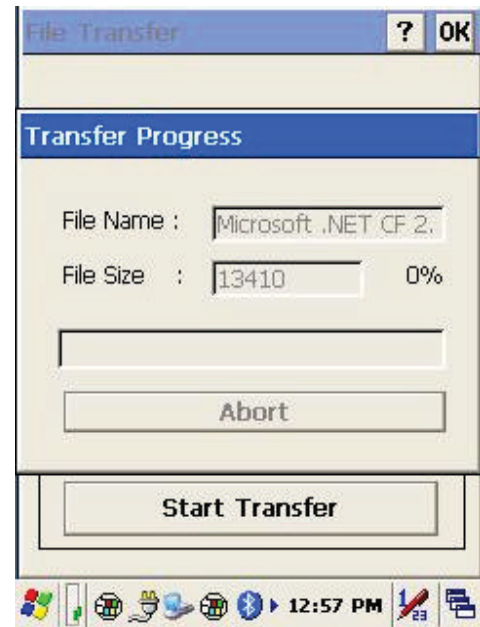
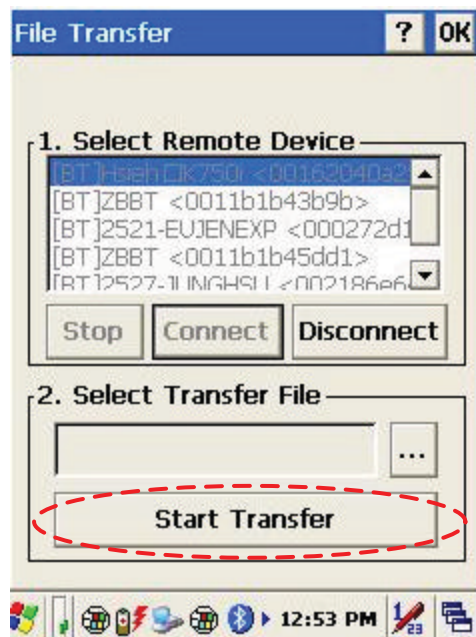


- Click "..." bottom to select the file need to be transferred, then click "OK" bottom to confirm.

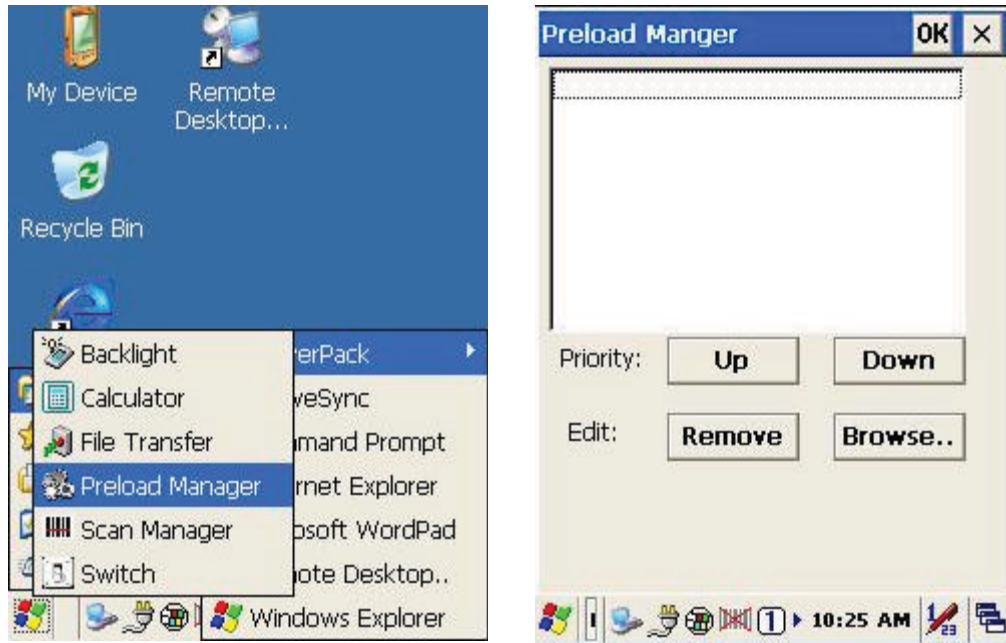


- Select "Start Transfer" bottom to start file transferring.



Preload Manager

The Preload Manager is an auto execution program for ZEBEX's WinCE device. You may set programs into the Preload list box and running the program by automatically or manually.

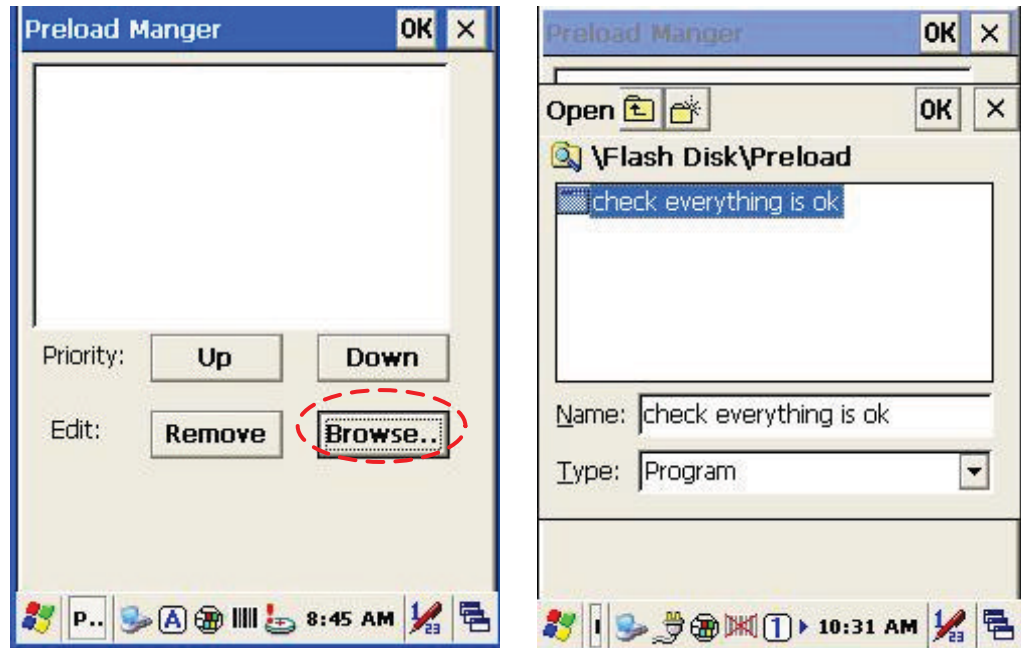


1. Modify Window located on top of display, providing functionalities of Priority, Remove and Browse.
2. Priority : Providing “UP ”and “DOWN ” two bottoms for adjusting priority on the lists.
1. Edit : Providing ”Remove “ 與 “Browse..” two functionalities , below are instructions:
Remove : Deleting selected functionalities.
Browse. : Selecting program for preloading, files can be selected from window by clicking Browse bottoms.

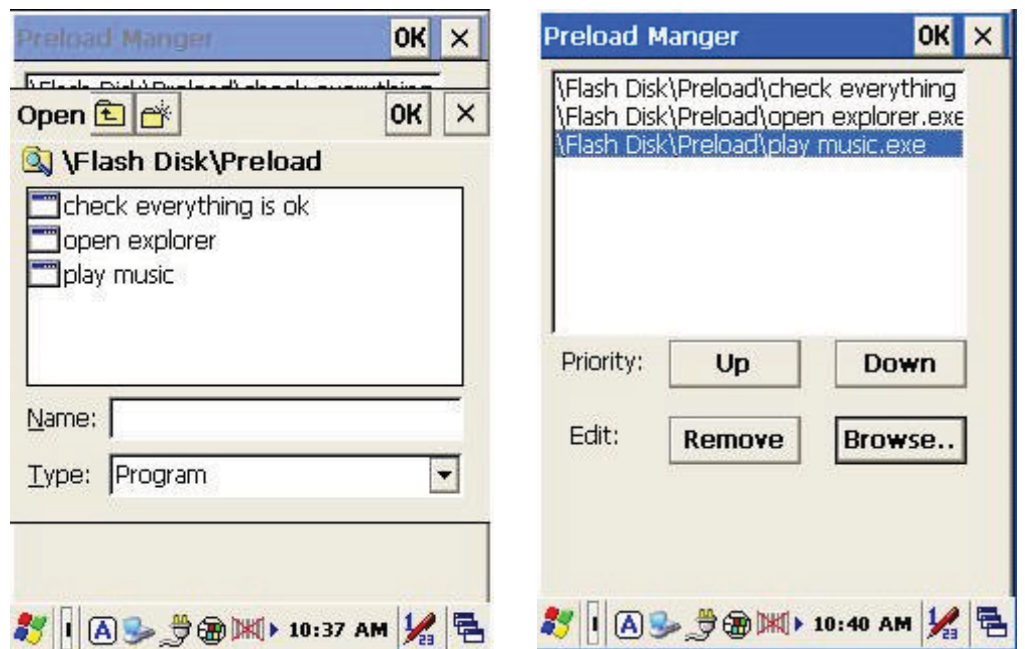
Preload Operation

1. Selected Program:

1.1 By clicking "Browse.." Below menu will appear, select preload program by using folder. Programs can be selected more than once.



Confirming file by clicking "OK" will get back to Preload Manager main page. Then complete its process.



2. Reset preload priority:

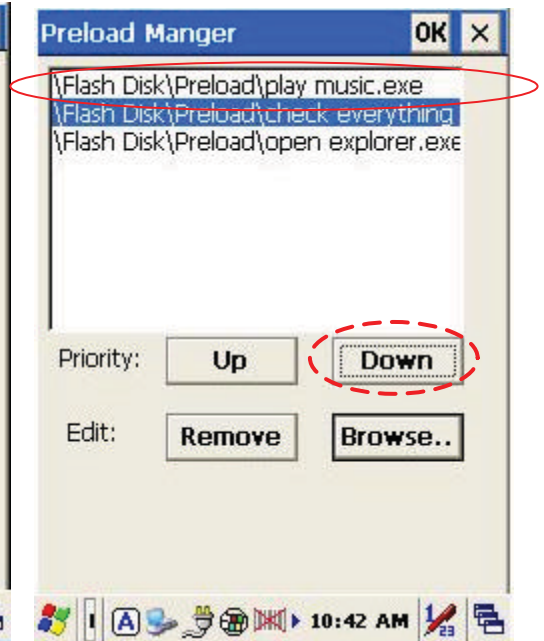
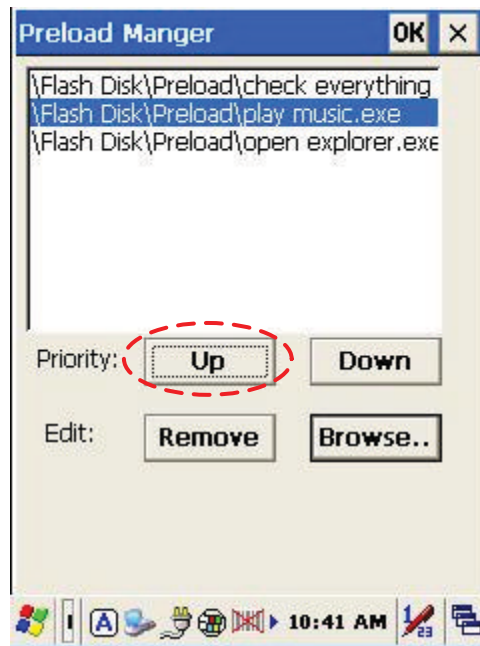
If the preload priority need to be set up as below :

(1)play music -> (2)open explorer -> (3)check everything

Follow steps listed below :

2.1 Select by clicking play music.exe program and click” **Up** ” bottom, Therefore, play music.exe will be shifted up.

2.2 Then select by clicking check everything program and click “**Down**” bottom. Therefore, check everything program will be shifted down.



3. Remove a program:

In order to remove “open explorer” program, select by clicking program, then select “Remove” by clicking on bottom to finish command.

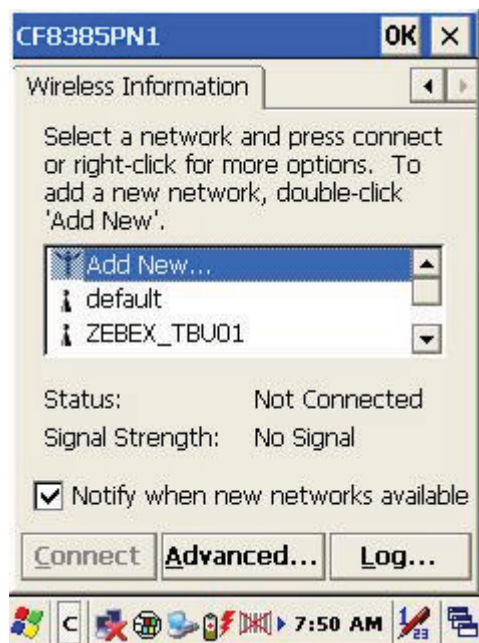


Switch

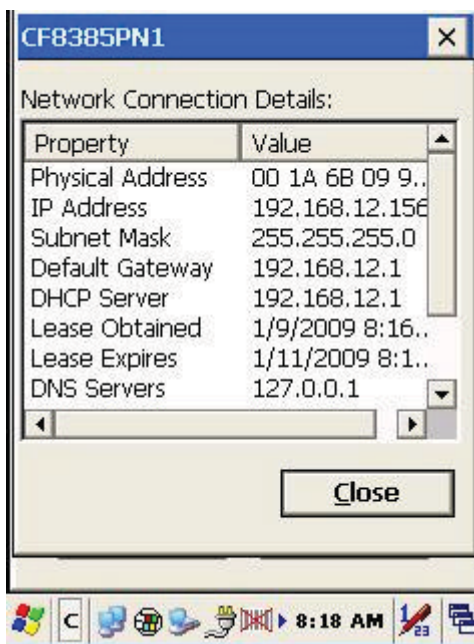
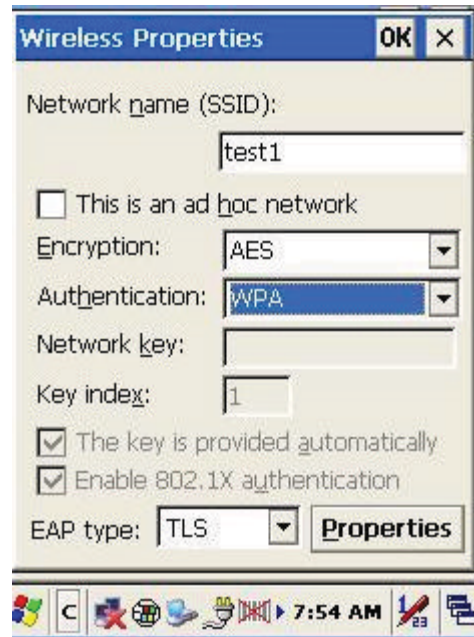
The WiFi & Bluetooth switch utility. This application provides as a switch function to let you easy turn on or off the function and power for WiFi and Bluetooth interface.



The available wireless network access point will be searching automatically when you check the selection for enable WiFi function. You can select an access point and press “ **Connect** ” button to connect with that network.

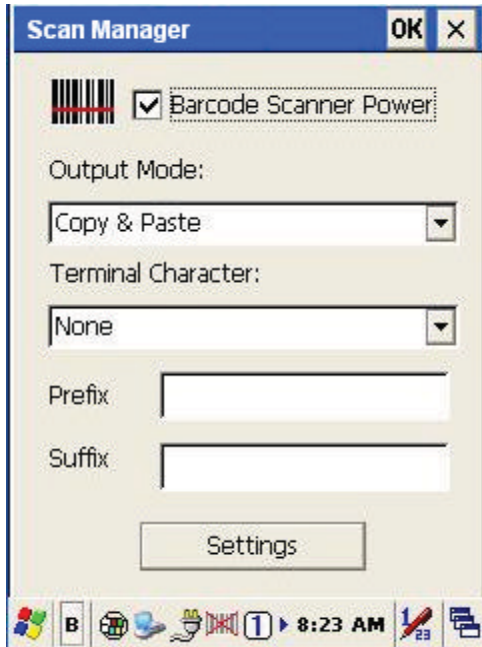


Double-click the “ **Add New...** ” on the list box will add a new wireless network, or double-click an existed access point on the list box for open the wireless properties for setting. You also can use “ **◀** ” or “ **▶** ” button for display more information for network setting.



TrayScan

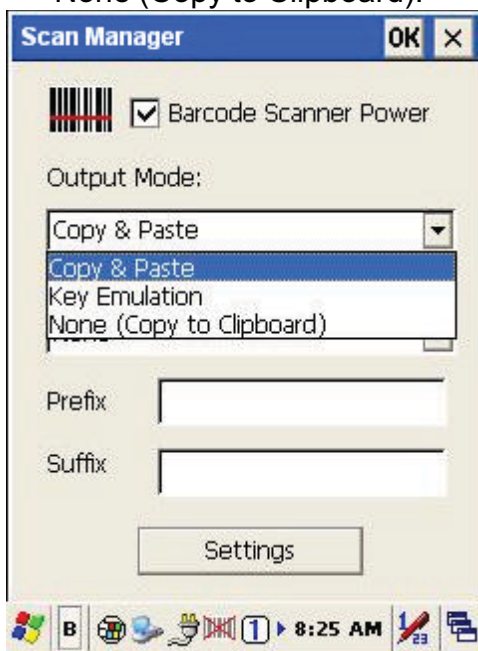
The TrayScan program is a barcode reader set up program, it offer you an easy way to enable or disable the barcode scanner, and also offer you to set up each barcode symbolic properties.



Below are instructions of functions on main page:

1. Output Mode

Providing three output methods such as Copy & Paste / Key Emulation / None (Copy to Clipboard).



1.1 Copy & Paste

Copy and paste the barcode information into application that need to execute data as input. (ex. WordPad) ,

1.2 Key Emulation

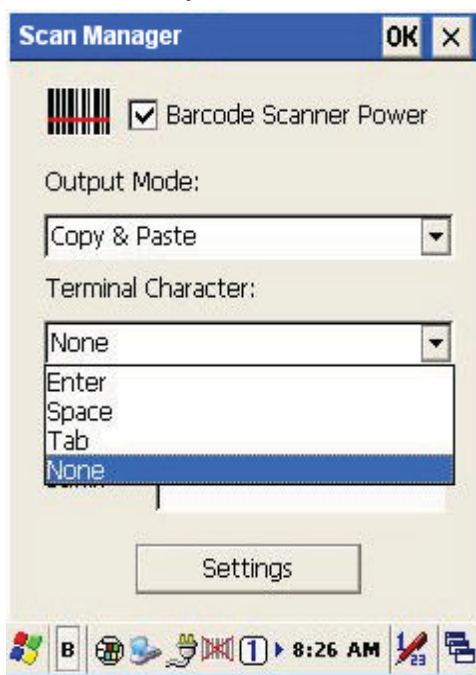
Transfer barcode information via Key Emulation to executed software' s edit window. Key Emulation function can also be used for barcode scanning under conditions of Terminal Emulation, Command Promp and some other program without touch panel. Read data will be transferred to application program.

1.3 None(copy to clipboard)

Function provide required barcode information to application program, after this function was activated, scanner will read barcode information and save data into clipboard.

2. Terminal Character

Set the terminator control code with barcode data. We offer "Enter", "Space", "Tab", and "None" for selections. Terminator control code will be sent every time when barcode was read.



3. Suffix

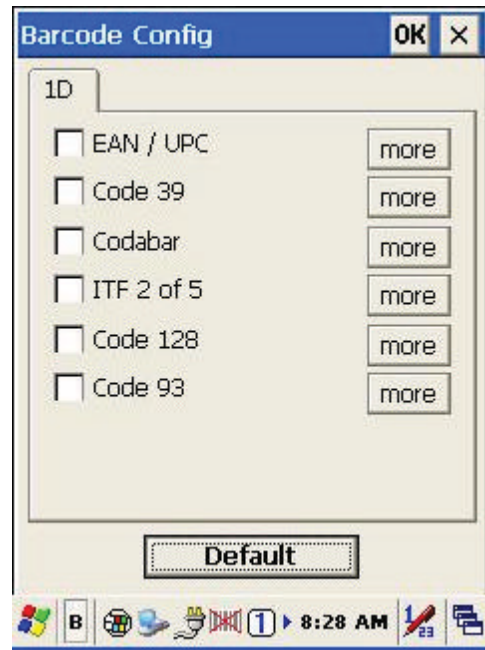
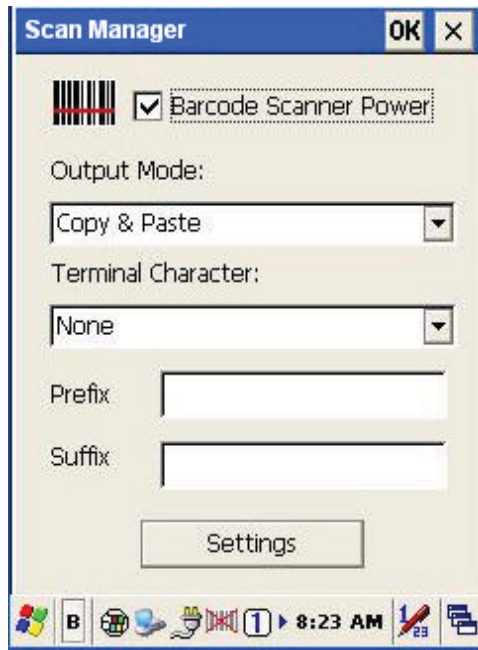
Set the suffix character with barcode data.

4. Prefix

Set the preamble character with barcode data.

5. Setting

To set the barcode parameter value of each kind of barcode for barcode scanner. Press the " Setting " button in TrayScan application to start the barcode setting.



To check the barcode type selection for enable the type of barcode for read.

Press " **more** " button to setting the barcode parameter value of each kind of barcode.

Press " **Default** "button to use system default value to set up the barcode parameter. The default value was show in below pictures.

