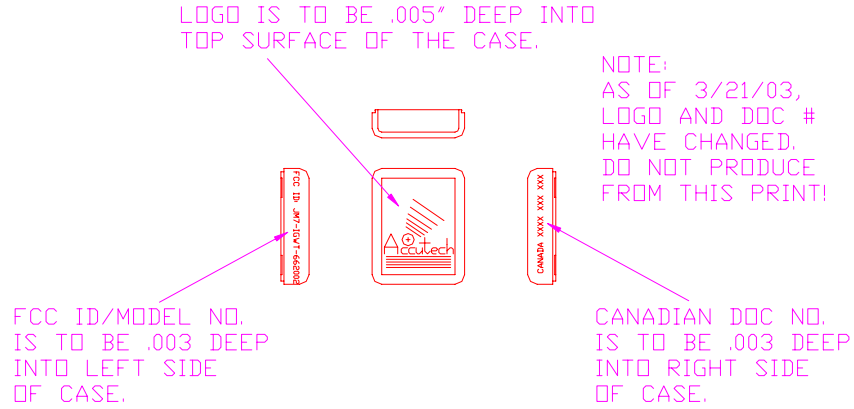


The assembly #662002, known as the Tag, has its FCC identification molded into its case. The embedded drawing shows the location on the tooling;



NOTE:  
ALL DIMENSIONS ARE IN INCHES +/- 0.003.

INNOVATIVE CONTROL SYSTEMS		
2325 PARK LAWN DRIVE BLDG 4N		
WAUKESHA, WI 53186 (414) 785-0645		
TITLE ES/WANDERER SENSOR CASE		
VIEW LOGO/FCC ID/DOC ID PLACEMENT		
DRAWN BY M. KIECKHEFER	DOC NO 500034	REVISION C
DATE 04/11/03	FILENAME 500034B.DWG	SHEET 10 OF 10

In addition, the following notification is placed in the User and Installation manuals as well;

**FCC ID/DOC for the ES Sensor:**  
**FCC ID: JM7-IGWT-662002**  
**Canada XXXX XXX XXX**

This device complies with Part 15 of the FCC rules. Operation is subject to the following two conditions: (1) This device may not cause harmful interference, and (2) this device must accept any interference received, including interference that may cause undesired operation.