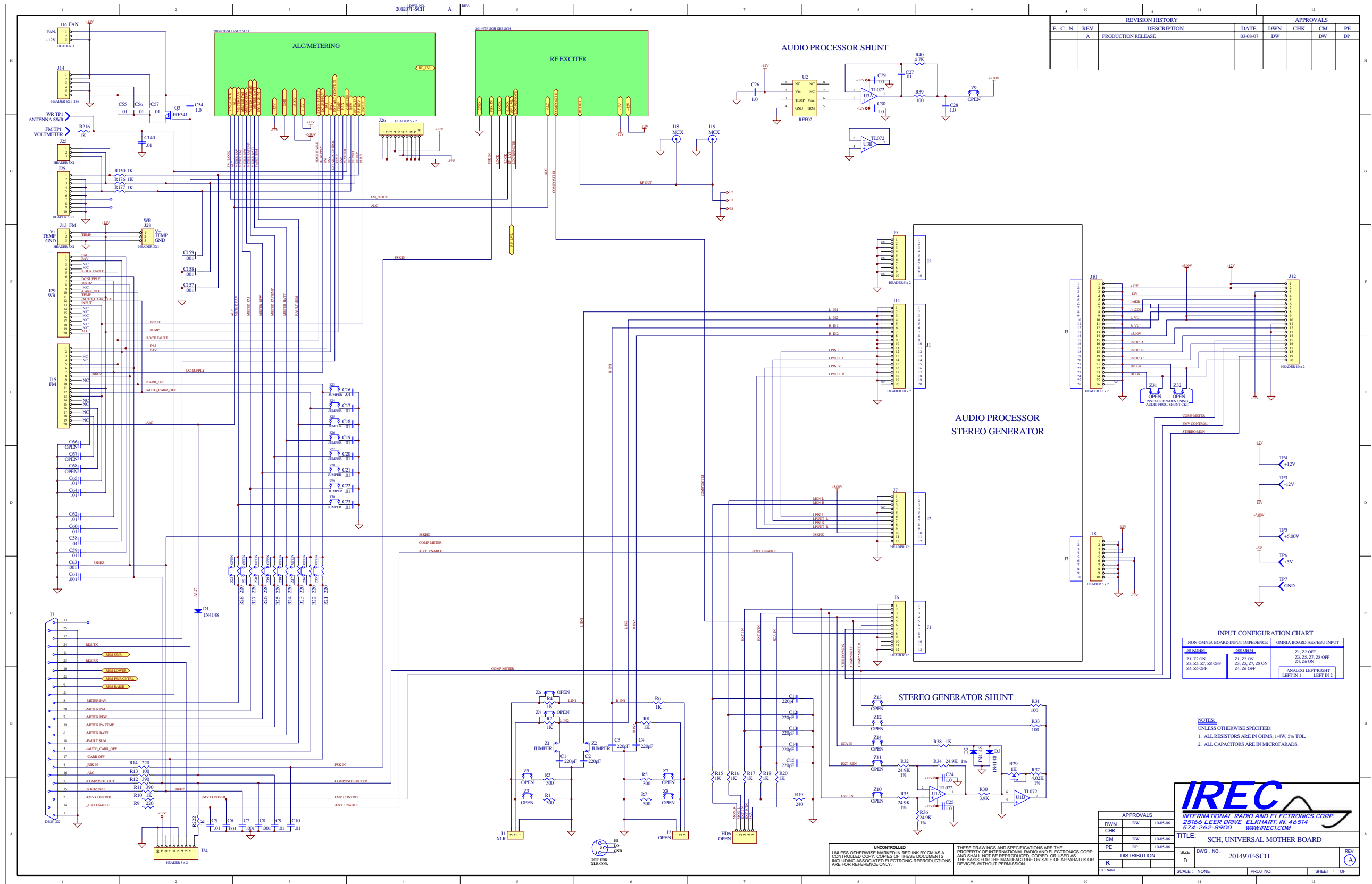


Schematic Diagram: Audio Processor/ Stereo Generator (Sheet 2 of 2)



REVISION HISTORY					APPROVALS		
E. C. N.	REV	DESCRIPTION	DATE	DWN	CHK	CM	PE
	A	PRODUCTION RELEASE	03-08-07	DW		DW	DP

NON-OMNIA BOARD INPUT IMPEDANCE		OMNIA BOARD AES/EBU INPUT	
Z1, Z2 ON	Z3, Z4 OFF	Z1, Z2 OFF	Z3, Z4, Z5 ON
Z1, Z2, Z4	Z3, Z5 OFF	Z1, Z2, Z5 OFF	Z4, Z6 ON
Z1, Z5 OFF	Z4, Z6 OFF	Z1, Z2, Z3, Z5 ON	Z4, Z6 OFF

- NOTES:
 1. ALL RESISTORS ARE IN OHMS, 14W, 5% TOL.
 2. ALL CAPACITORS ARE IN MICROFARADS.

APPROVALS	
DWN	DW 10-05-06
CHK	CM DW 10-05-06
CM	DW 10-05-06
PE	DP 10-05-06
DISTRIBUTION	
K	
FILENAME	

IREC
 INTERNATIONAL RADIO AND ELECTRONICS CORP.
 25166 LEER DRIVE ELKHART, IN 46514
 574-262-8900 WWW.IREC.COM

TITLE: SCH, UNIVERSAL MOTHER BOARD

SIZE: DWG. NO. 201497F-SCH

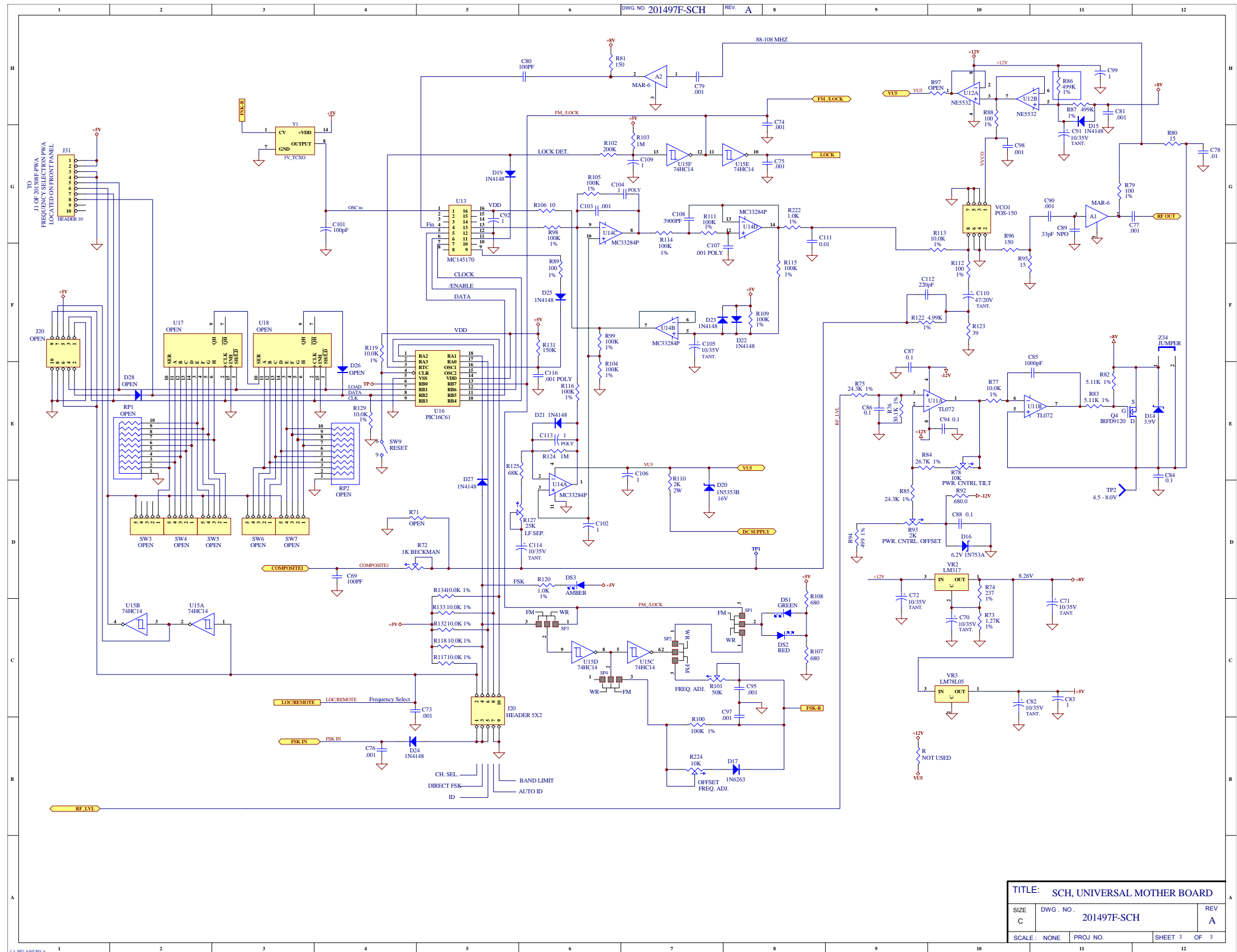
SCALE: NONE

PROJ. NO. SHEET 1 OF 3

UNCONTROLLED
 UNLESS OTHERWISE MARKED IN RED INK BY CM AS A CONTROLLED COPY. COPIES OF THESE DOCUMENTS INCLUDING ASSOCIATED ELECTRONIC REPRODUCTIONS ARE FOR REFERENCE ONLY.

THESE DRAWINGS AND SPECIFICATIONS ARE THE PROPERTY OF INTERNATIONAL RADIO AND ELECTRONICS CORP. AND SHALL NOT BE REPRODUCED, COPIED, OR USED AS THE BASIS FOR THE MANUFACTURE OR SALE OF APPARATUS OR DEVICES WITHOUT PERMISSION.

Schematic Diagram: Motherboard (Sheet 1 of 3)



Schematic Diagram: Motherboard (Sheet 3 of 3)

Illustration 6-7 FM Frequency Selection Board (Top-Side)

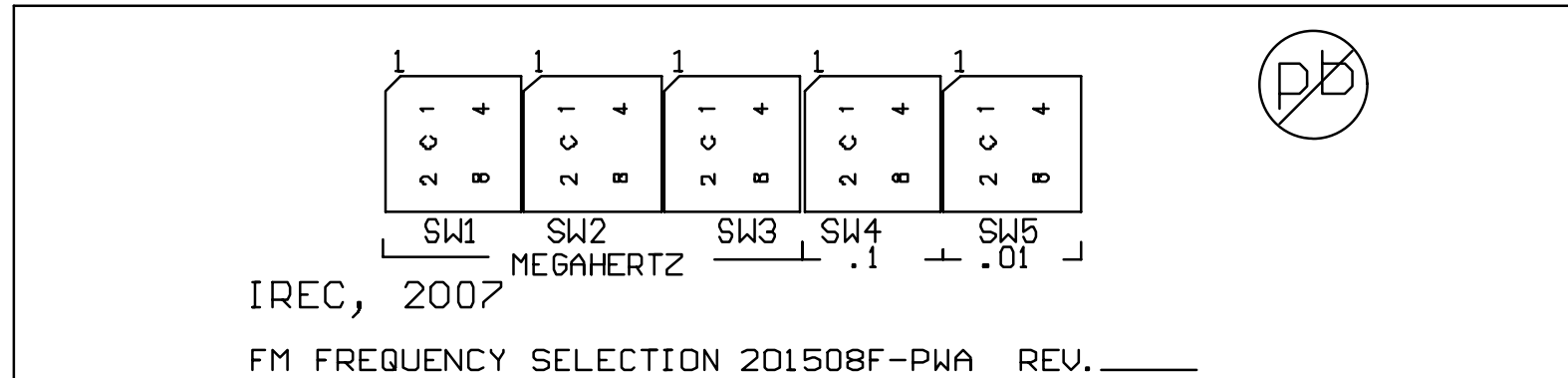
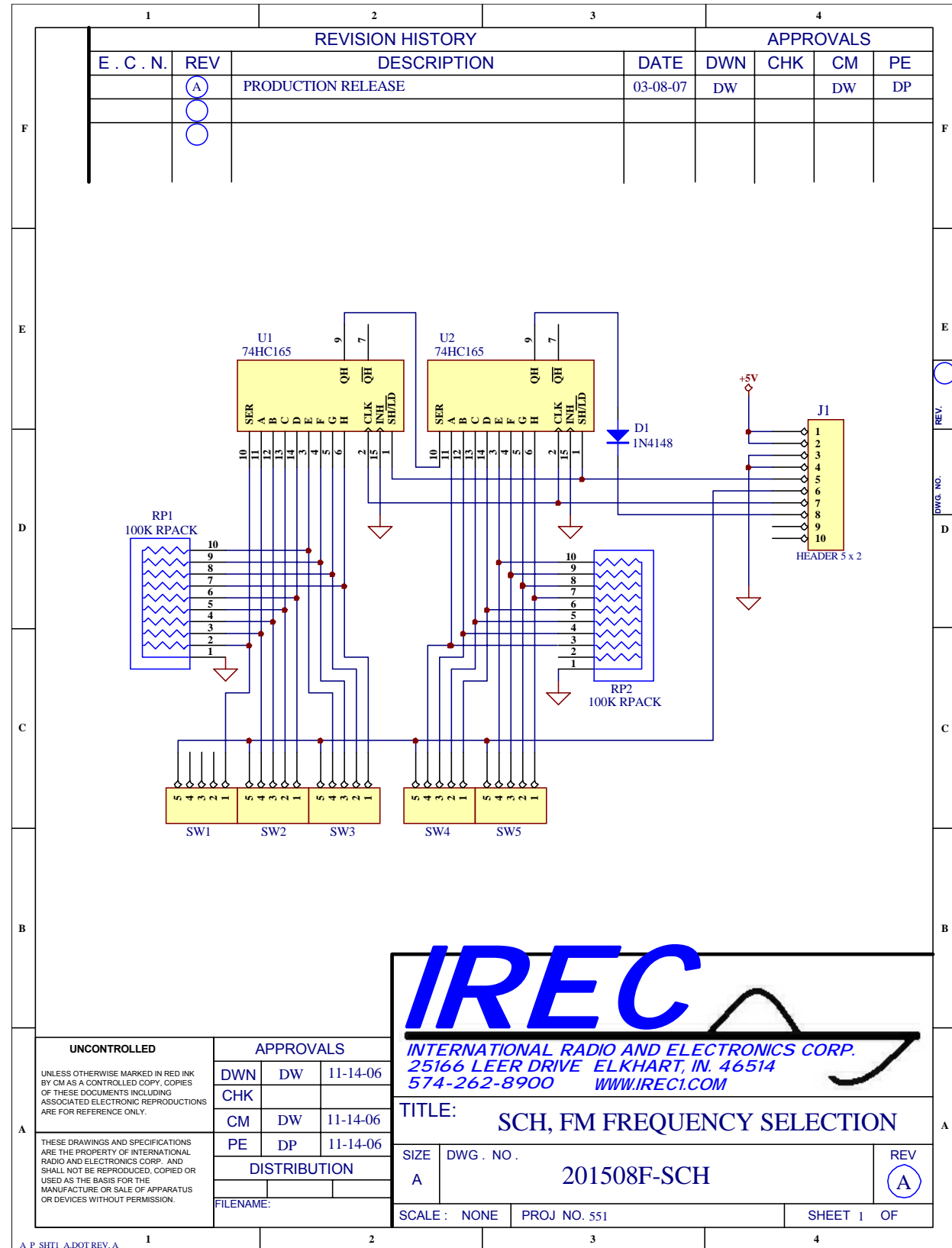
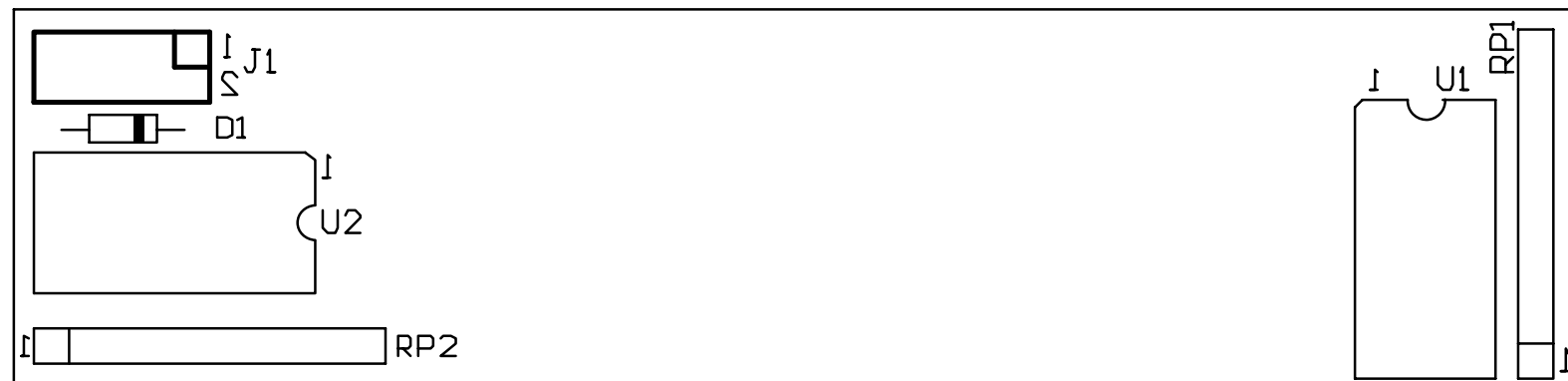


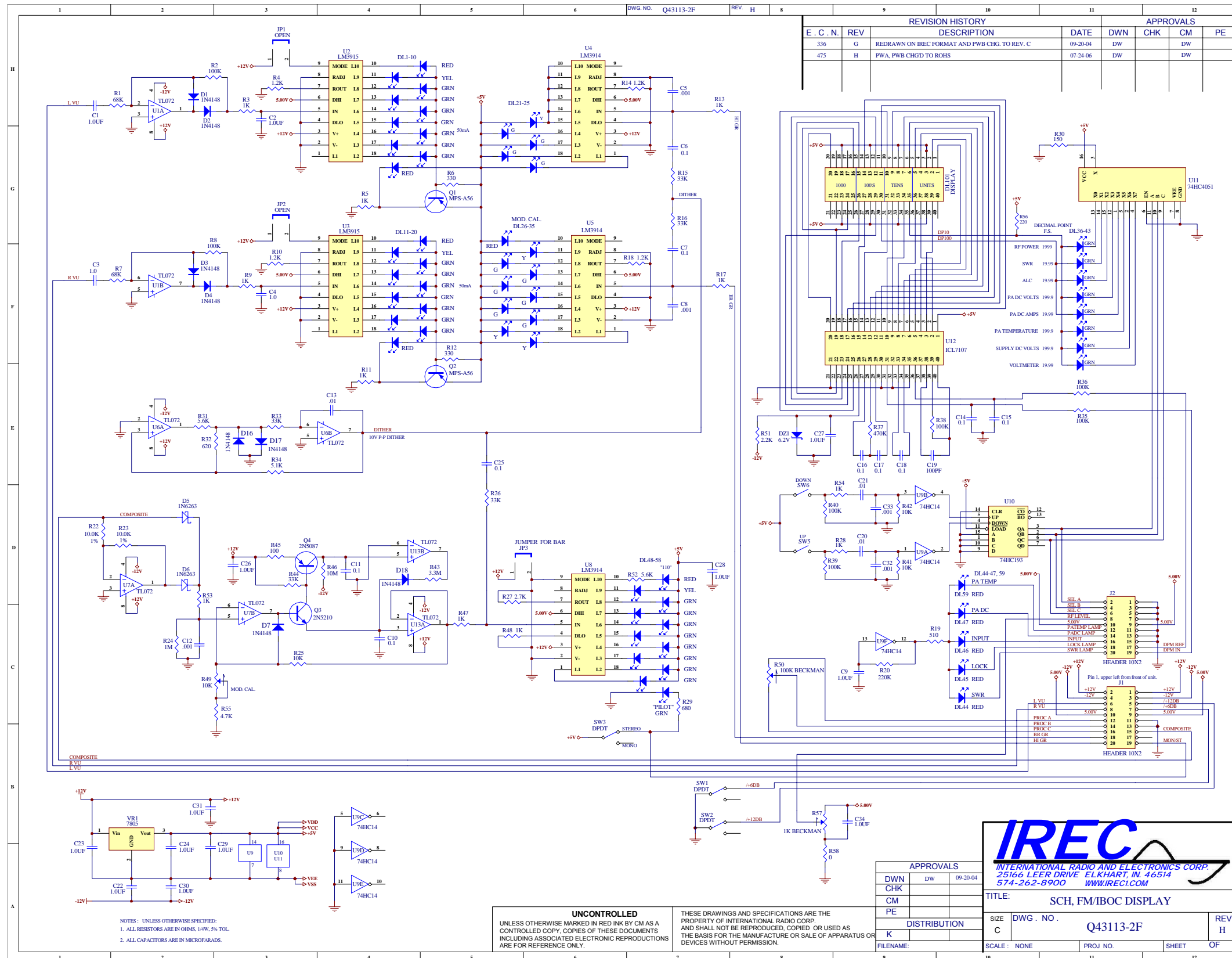
Illustration 6-8 FM Frequency Selection Board (Bottom-Side)



UNCONTROLLED UNLESS OTHERWISE MARKED IN RED INK BY CM AS A CONTROLLED COPY, COPIES OF THESE DOCUMENTS INCLUDING ASSOCIATED ELECTRONIC REPRODUCTIONS ARE FOR REFERENCE ONLY. THESE DRAWINGS AND SPECIFICATIONS ARE THE PROPERTY OF INTERNATIONAL RADIO AND ELECTRONICS CORP. AND SHALL NOT BE REPRODUCED, COPIED OR USED AS THE BASIS FOR THE MANUFACTURE OR SALE OF APPARATUS OR DEVICES WITHOUT PERMISSION.	APPROVALS			TITLE: SCH, FM FREQUENCY SELECTION SIZE DWG. NO. 201508F-SCH SCALE: NONE PROJ. NO. 551 SHEET 1 OF
	DWN	DW	11-14-06	
	CHK			
	CM	DW	11-14-06	
PE	DP	11-14-06		
DISTRIBUTION				
FILENAME:				

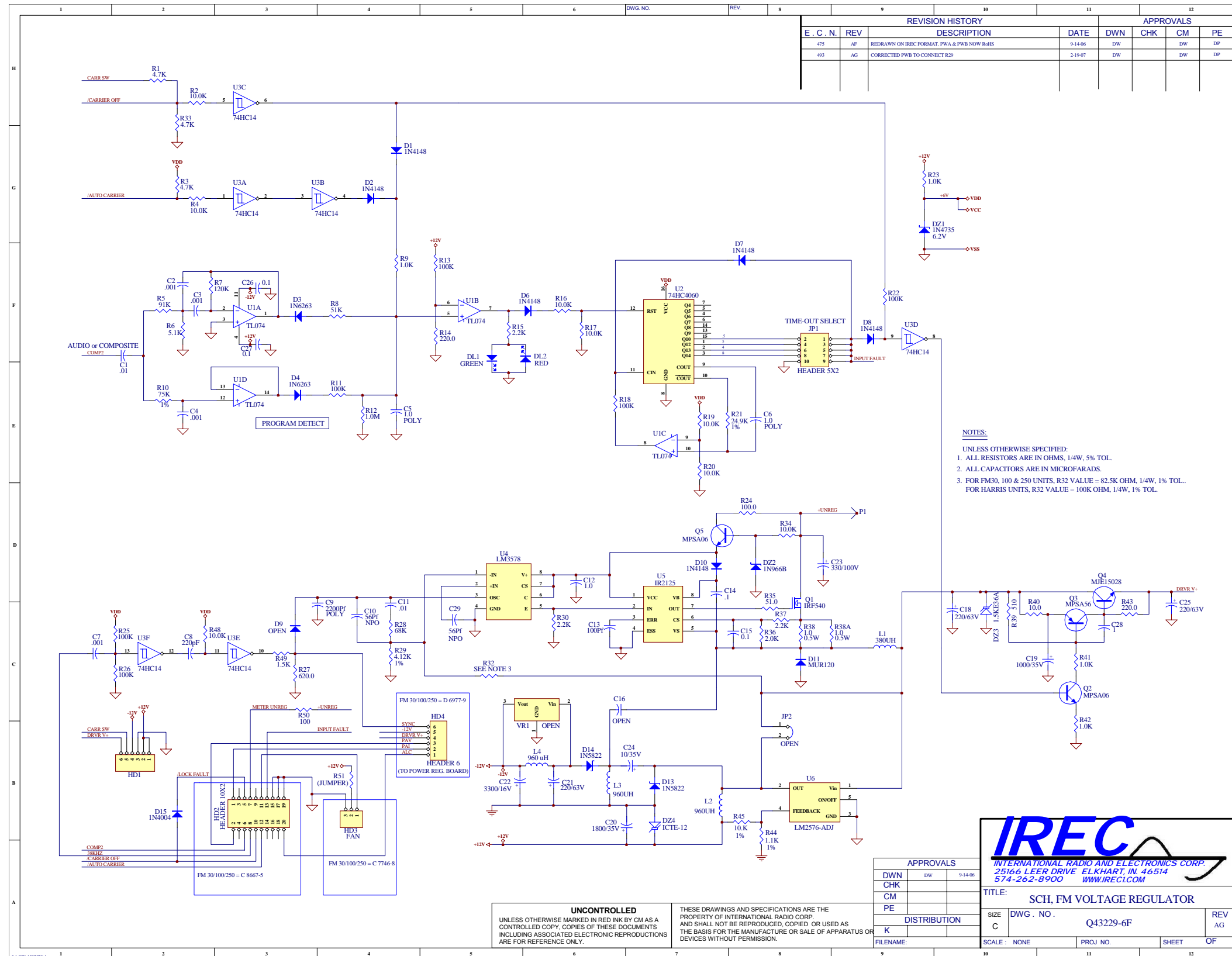
Schematic Diagram: FM Frequency Selection

Board Layouts and Schematics

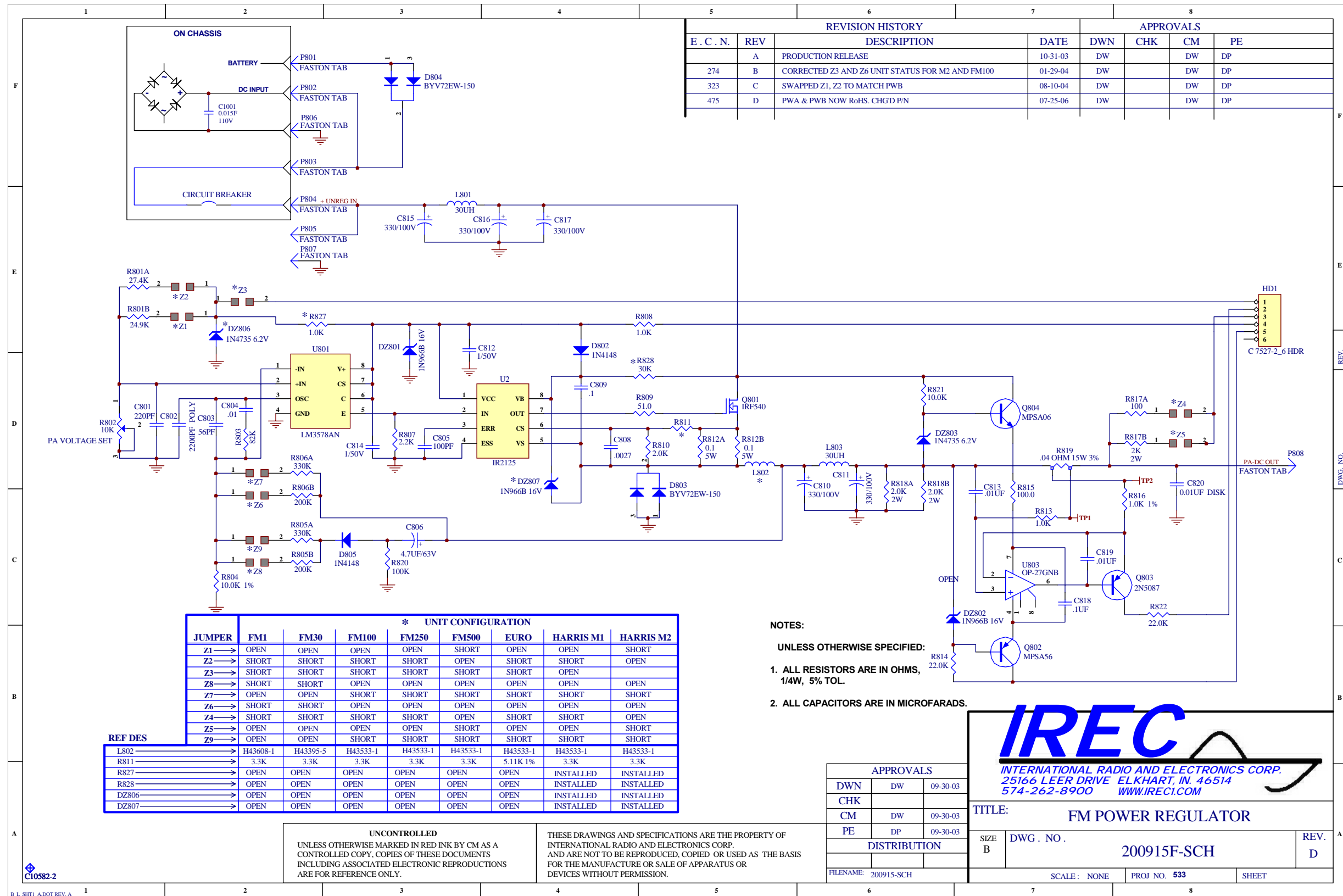


Schematic Diagram: FM Display

Board Layouts and Schematics

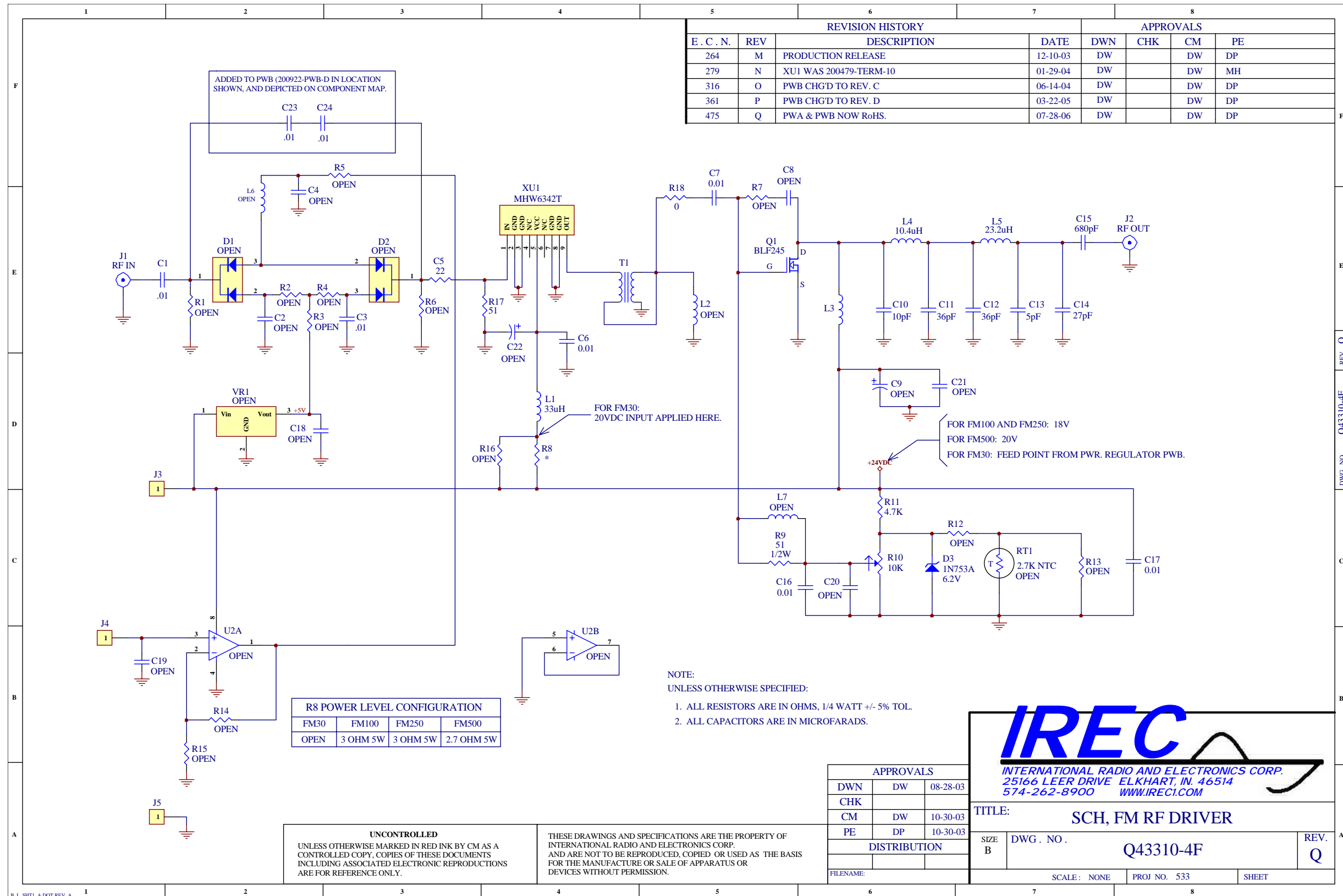


Board Layouts and Schematics



Schematic Diagram: FM Power Regulator

Board Layouts and Schematics



Schematic Diagram: FM RF Driver

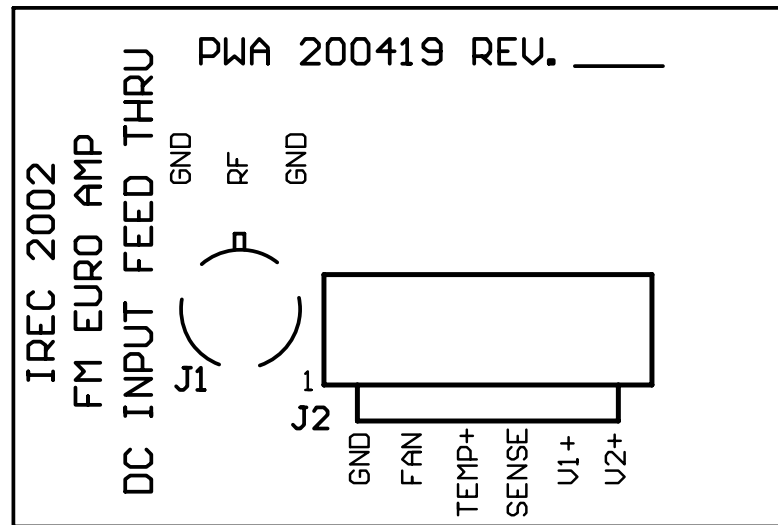
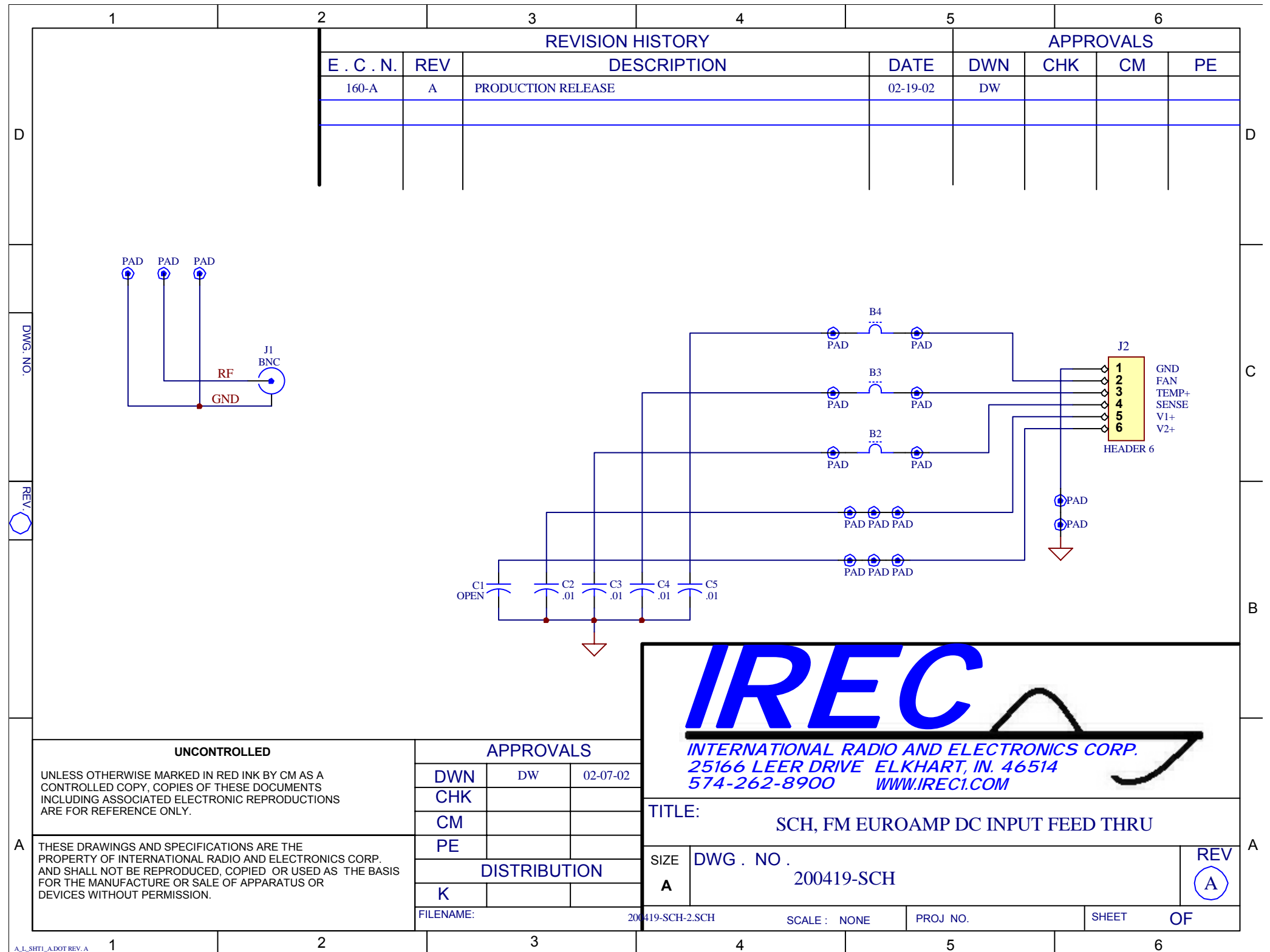
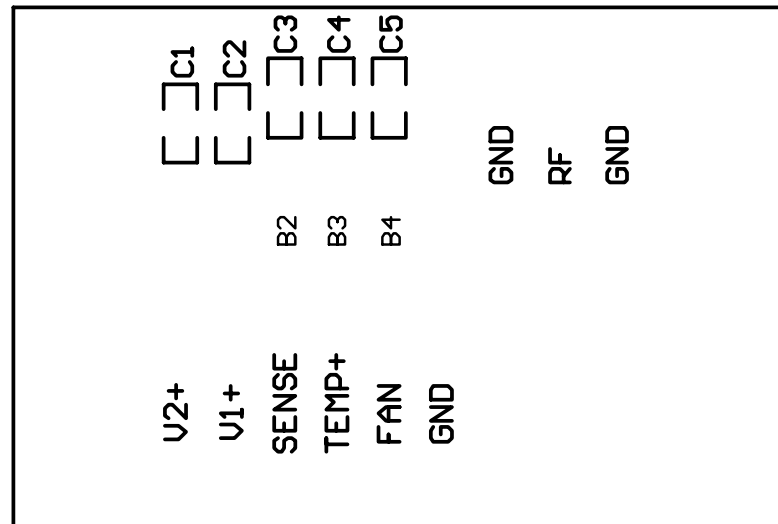


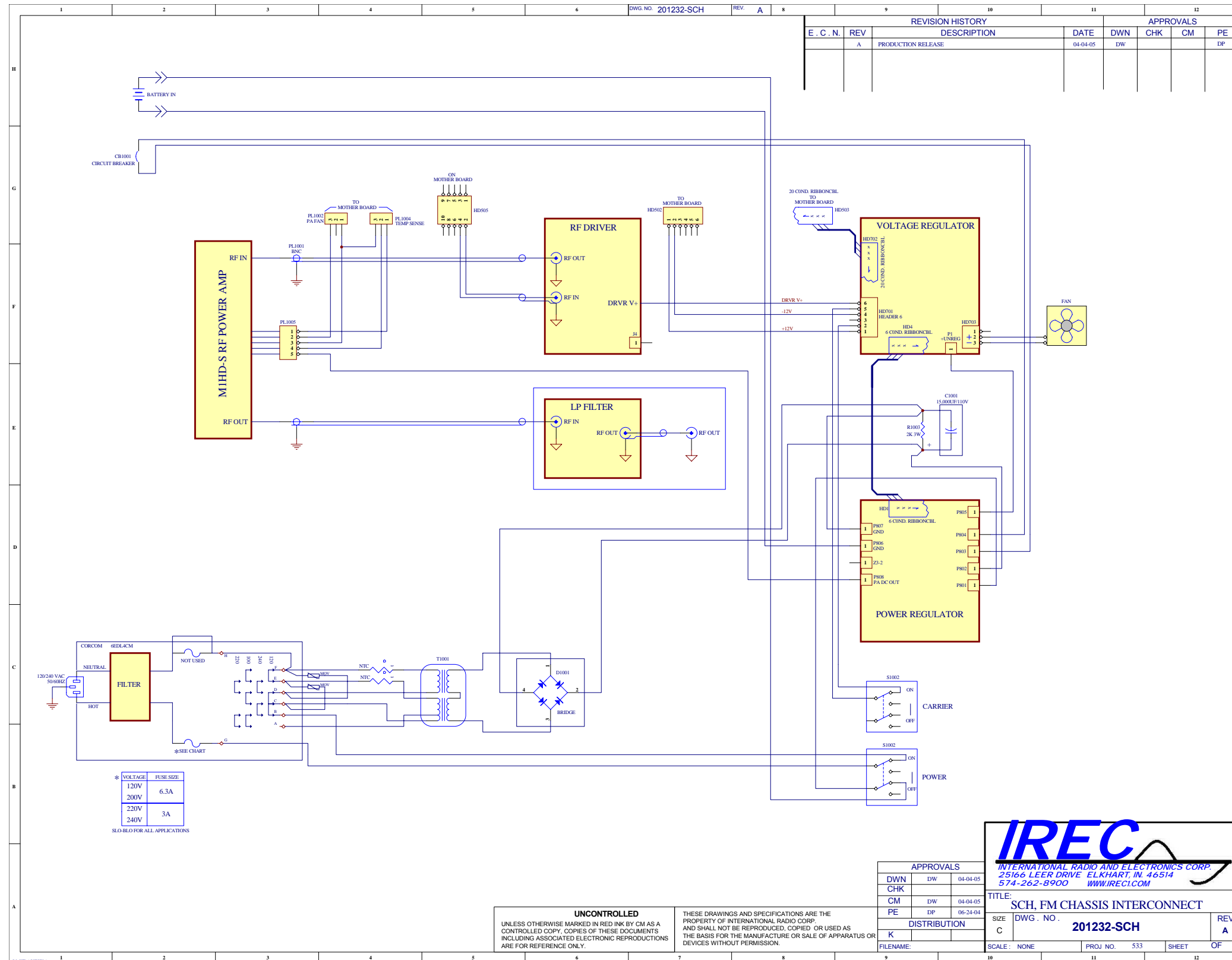
Illustration 6-15 FM Euroamp DC Input Feedthru (Top Side)

Illustration 6-16 FM Euroamp DC Input Feedthru (Bottom Side)



Schematic Diagram: FM Euroamp DC Input Feedthru

Board Layouts and Schematics



Schematic Diagram: FM Chassis Interconnect