

95519 ~~10/12/99~~

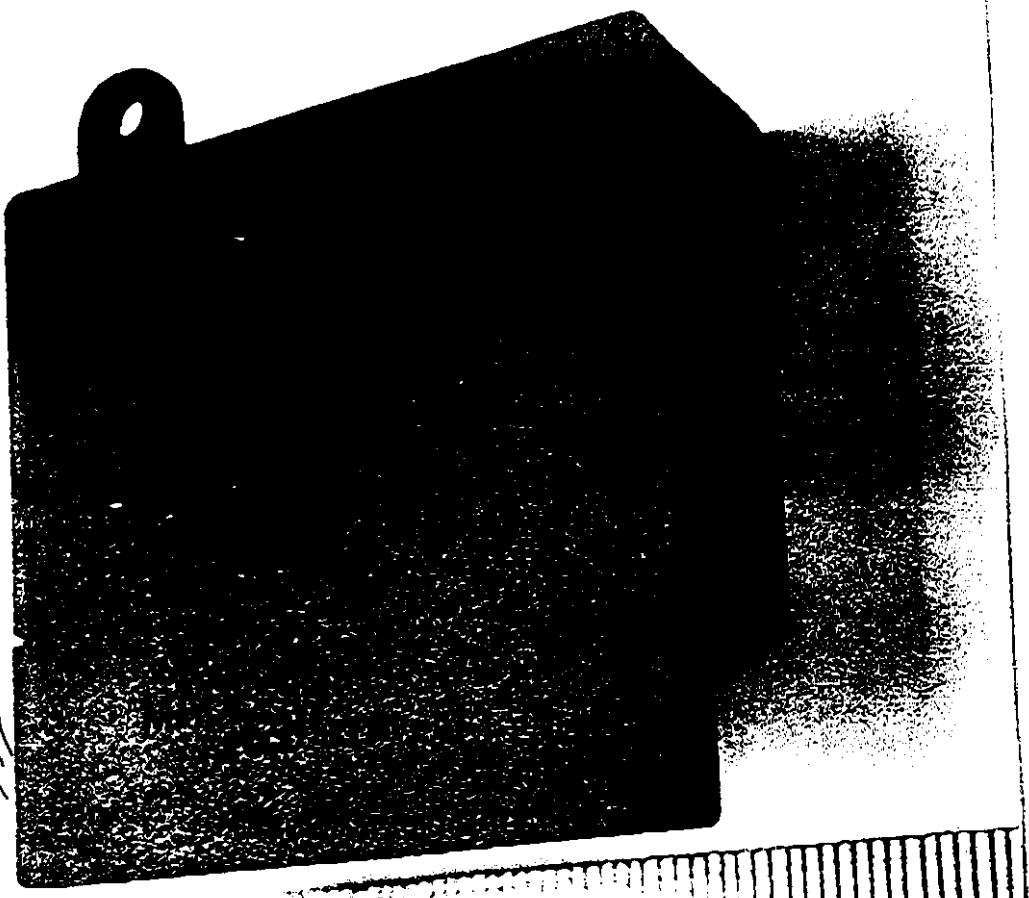
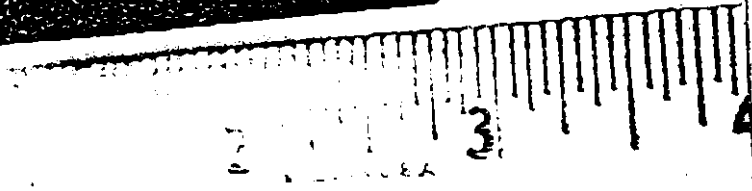


Exhibit 1

AC/LE 10/12/99



TO: Ms. Linda Elliott

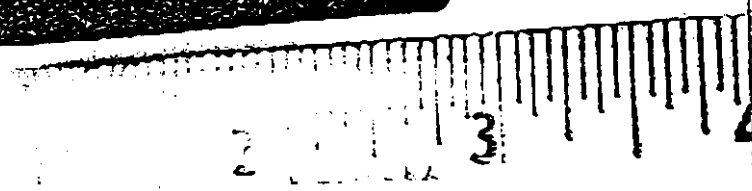
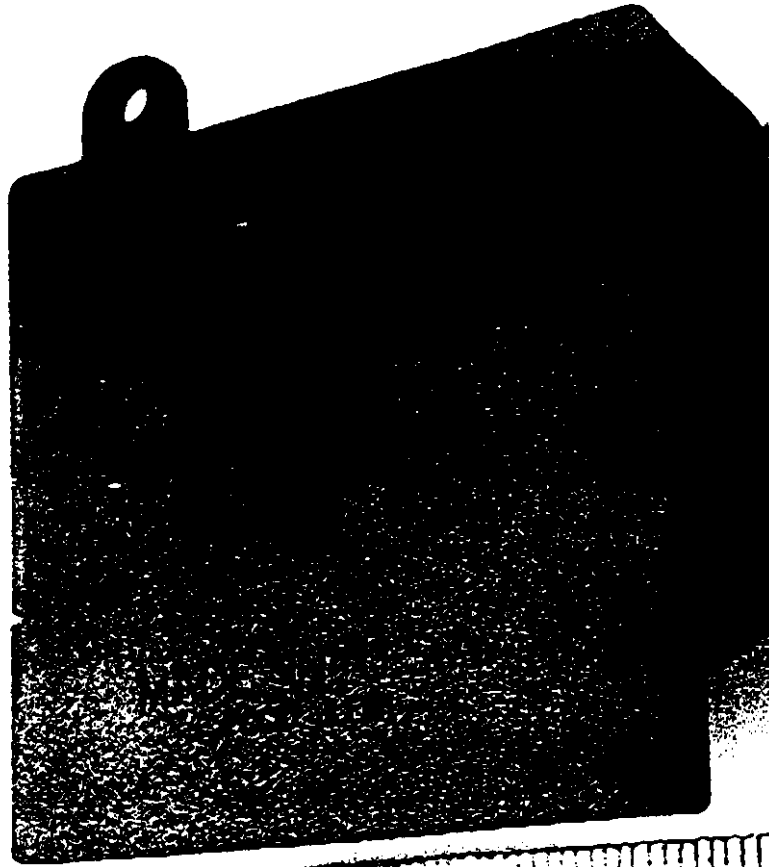
from: Shary Nassim?

IEI

360-254-1986

JLFMI





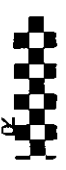
TO: Mrs. Linda Elliott

from: Shary Nassim

IEI

360-254-1906

JLFM1





**MODEL NO. 27730GE2-A  
CORDLESS TELEPHONE  
BASE STATION. HAC**

**THIS DEVICE COMPLIES WITH PART 15 OF THE FCC RULES.  
OPERATION IS SUBJECT TO THE FOLLOWING TWO CONDITIONS:  
(1) THIS DEVICE MAY NOT CAUSE HARMFUL INTERFERENCE, AND  
(2) THIS DEVICE MUST ACCEPT ANY INTERFERENCE RECEIVED  
INCLUDING INTERFERENCE THAT MAY CAUSE UNDESIRE OPERATION.  
PRIVACY OF COMMUNICATIONS MAY NOT BE ENSURED WHEN USING  
THIS PHONE.**

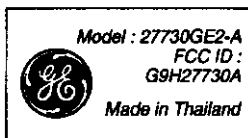
**CLASS 2 POWER SOURCE : 12VDC, 500mA  
USE THOMSON POWER SUPPLY  
COMPLIES WITH PART 68 FCC RULES  
FCC REG : G9H1HA-XXXXX-XX-X  
FCC ID : G9H27730A  
USCC : RJ11C  
REN : 0.5B**

**THIS DEVICE COMPLIES WITH CANADA RSS-210  
MADE IN THAILAND/FABRIQUE EN THAILANDE**

**REFER INQUIRIES TO : THOMSON CONSUMER  
ELECTRONICS, INC. MANAGER, CONSUMER RELATIONS, P.O.BOX  
1976 INDIANAPOLIS, IN 46206**



**Model : 27730GE2-A  
Part Name : Base Rating Label  
Dimension : 59.8 X 39.7 mm  
Date : 25.OCT.99  
REV. : 0**



**Model : 27730GE2-A  
Part Name : Handset Rating Label  
Dimension : 19.8 X 11mm  
Date : 25.OCT.99  
REV. : 0**