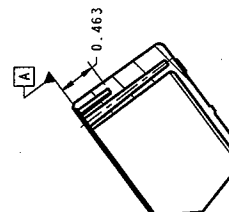
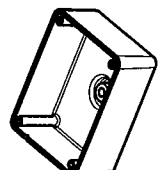
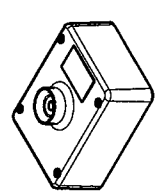
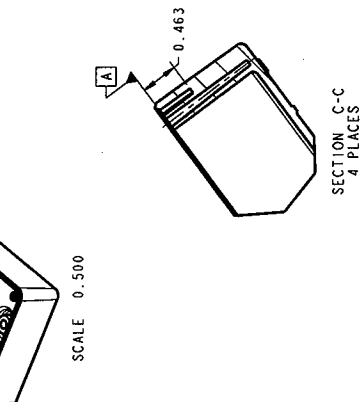
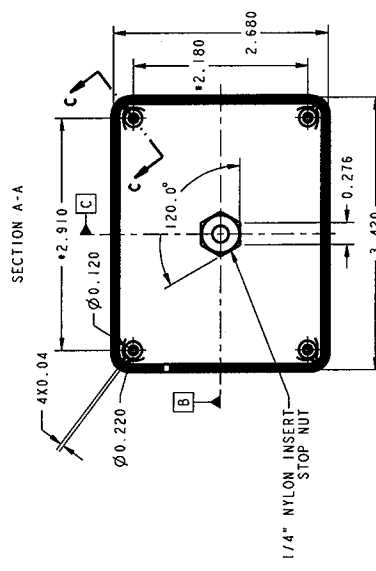
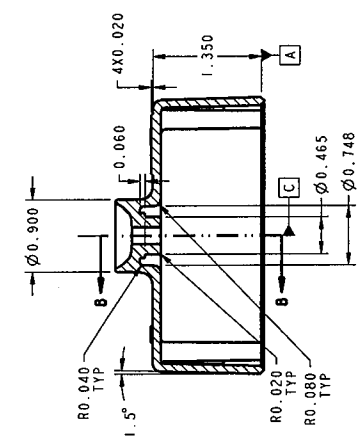
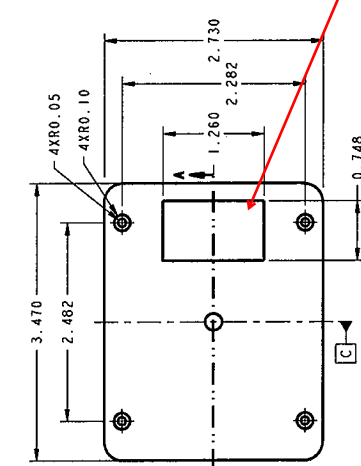


PART NUMBER: 093C0592		REV
DATE	BY	REV
03-0181	MK	INITIAL RELEASE
28MAR09		A



- NOTES:
- CAD MODEL 093C0592 FOR FEATURE DIMENSIONS NOT CONTROLLED ON THIS DRAWING.
  - SEE CHAMBERLAIN STANDARD FOR DIMENSIONING RULES AND TECHNICAL STANDARDS FOR SPECIFIED MATERIAL TOLERANCES DISPLAYED ON THIS DRAWING SUPERCEDE THOSE OF SPI. TOLERANCES UNDER .005 INCH ONLY APPLICABLE WHERE SPECIFIED ON THIS DRAWING.
  - MATERIAL: ABS, HIVAL HGA.
  - SEE CHAMBERLAIN STANDARD PRODUCT SPEC 190A0280 FOR GENERAL TOOLING AND PROCESSING.
  - SECTIONS 1, 2 AND 1, 3 DO NOT APPLY, REFER TO DATABASE.
  - GATE VESTIGE TO BE .005 INCHES MAXIMUM OR BELOW SURFACE.
  - PART NUMBER, ISSUE LETTER, VENDOR ID, ISO MATERIAL DESIGNATION, & CAVITY NUMBER (IN MULTI-CAVITY TOOL) TO BE MOLED IN THE AREA INDICATED IN 1/32 AND 1/8 INCH HIGH CHARACTERS. RAISED LETTERS MUST BE USED. DIMENSIONS MUST BE TO SPECIFIED DIMENSIONS IN THE MONTH AND THE OTHER FOR YEAR. THE LETTERS MUST BE SPECIFIED IN THE MONTH AND THE OTHER FOR YEAR.
  - EXTERIOR SURFACE TEXTURE: CLASS-A MOLDTECH WT-11020 EXCEPT WHERE NOTED
  - SURFACES WITH NO SPECIFIED FINISH TO BE IN THE RANGE OF SPI B1-C3 (TYPICAL UNLESS DIAMOND POLISH IS NEEDED).
  - DIMENSIONS MARKED WITH \*\* ARE PROCESS CRITICAL AND NEED TO BE CONTROLLED AND MONITORED THROUGHOUT THE PROCESSING. DIMENSIONS MARKED WITH \*\*\* ARE SELECTED DIMENSIONS THAT MUST BE INDICATED ON EACH SHIPMENT PER 190A0750.
  - PARTS MUST COMPLY WITH HAZARDOUS MATERIALS REGULATIONS, AND COMPLIANCE MUST BE INDICATED ON EACH SHIPMENT PER 190A0750.

Label Location

**CHAMBERLAIN**

HOUSING, PCB, PIR

THIRD ANGLE PROJECTION

DO NOT SCALE DRAWING

SEE NOTES

MATERIAL: ABS, HIVAL HGA

SCALE: 1.00

DATE: 21APR09

DRAWN: PRA

CHECKED: PRA

PART NUMBER: 093C0592

SHEET: 1 OF 1

CONFORM IDENTICAL	TOEFLINKS EXCEPT AS NOTED:
THIS DRAWING HAS BEEN CHECKED FOR CONFORMANCE WITH THE REQUIREMENTS OF THE FEDERAL ACQUISITION REGULATION (FAR) PART 101-11.6, WHICH MANDATES THAT THE PART MUST BE IDENTICAL TO THE PART SPECIFIED IN THE PART NUMBER.	FOR TECHNICAL DRAWINGS: PART NUMBER, DATE, AND SCALE.
DATE OF A COMPUTER GENERATED DRAWING: 21APR09	DATE OF A COMPUTER GENERATED DRAWING: 21APR09
DATE OF A COMPUTER GENERATED DRAWING: 21APR09	DATE OF A COMPUTER GENERATED DRAWING: 21APR09