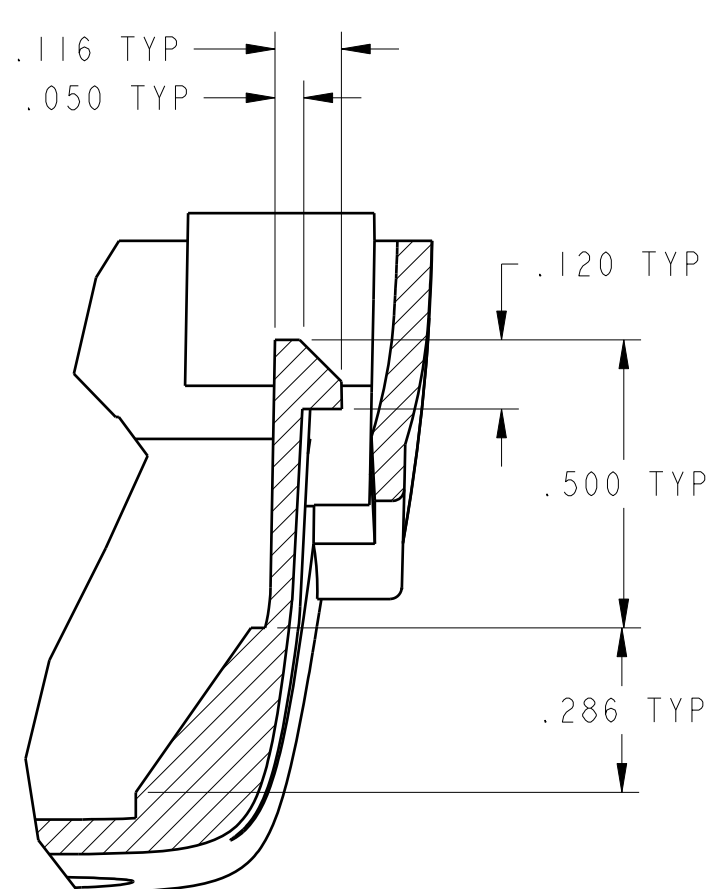
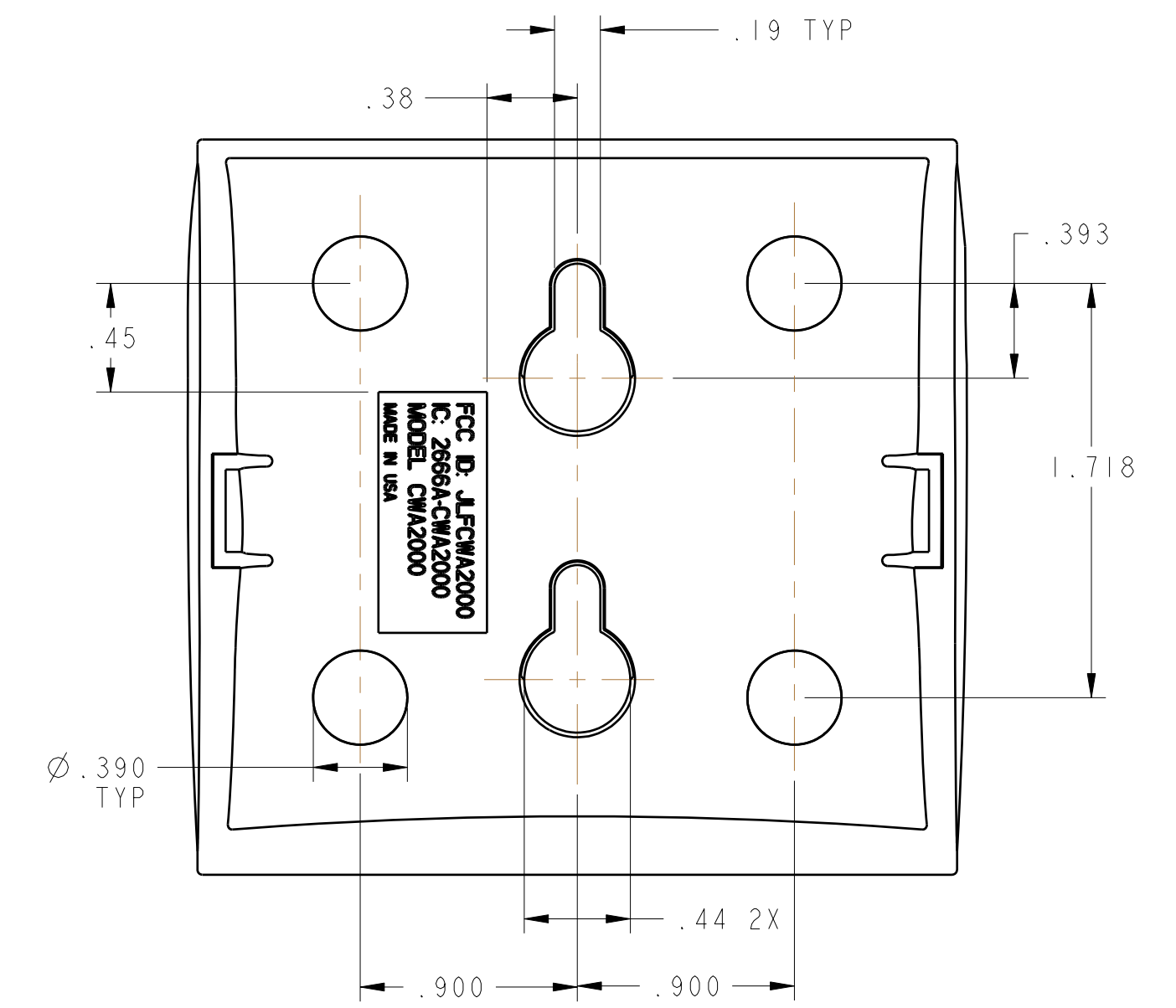
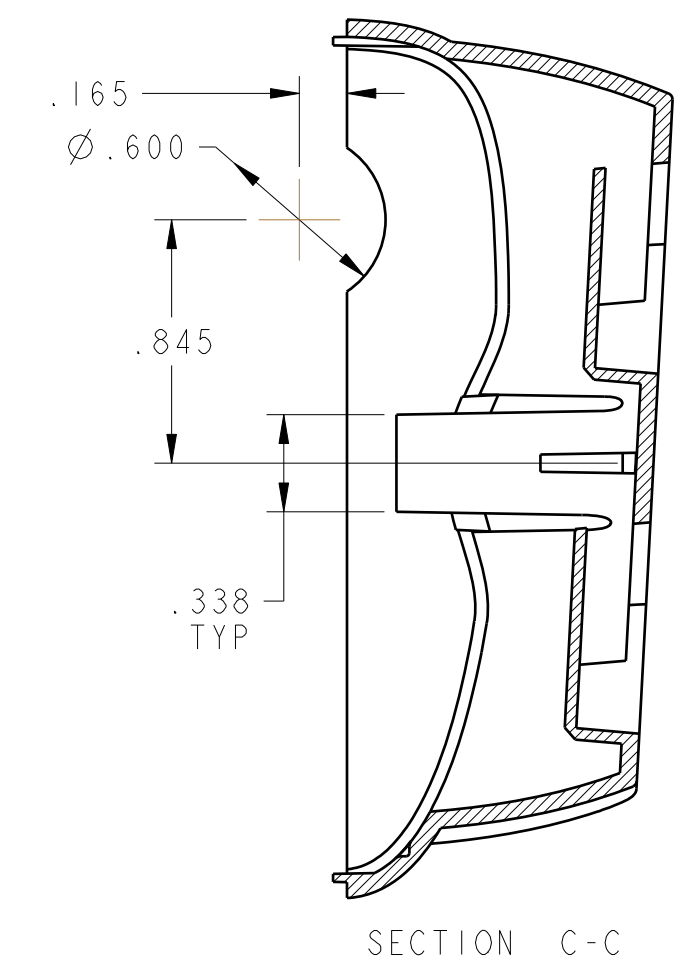
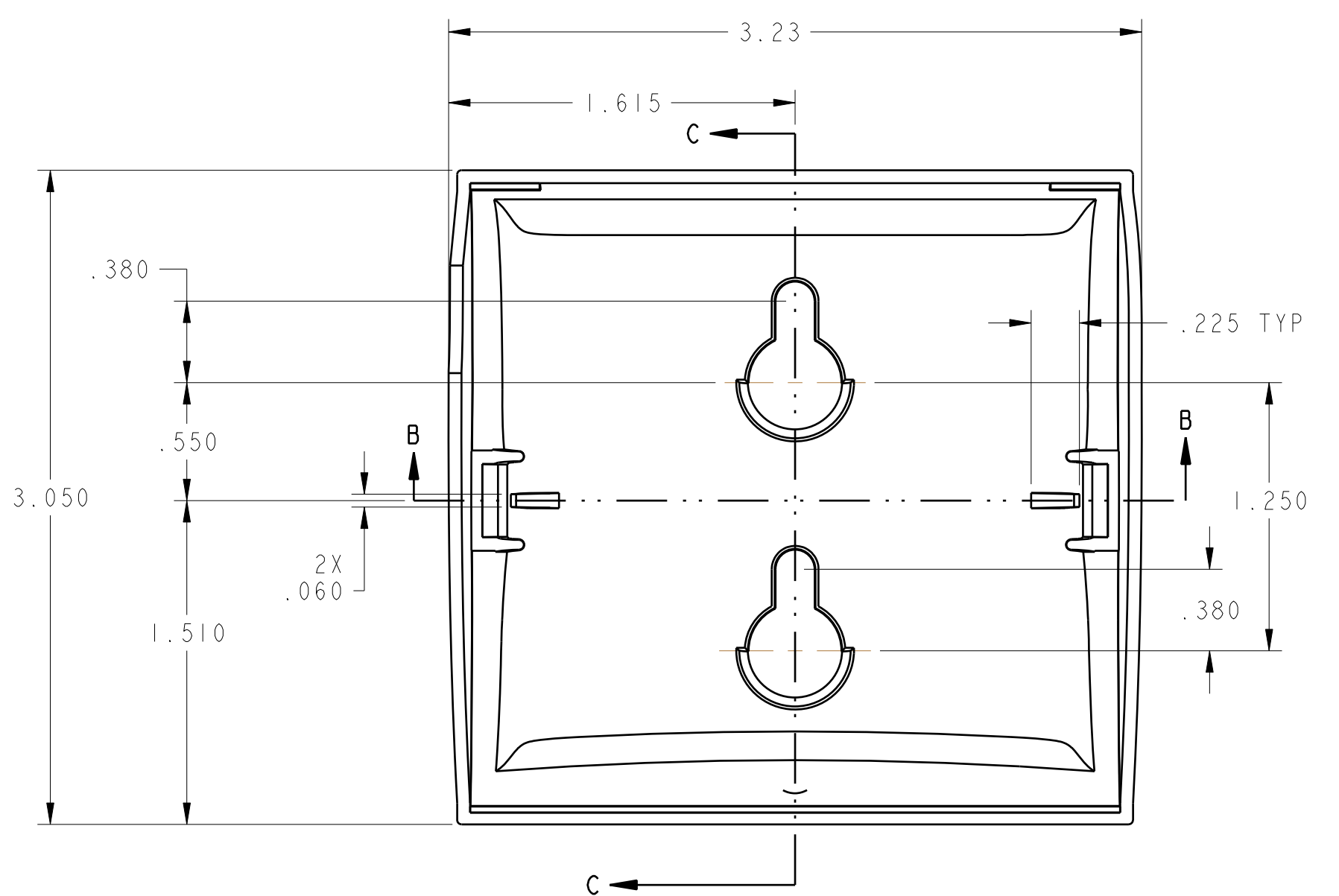
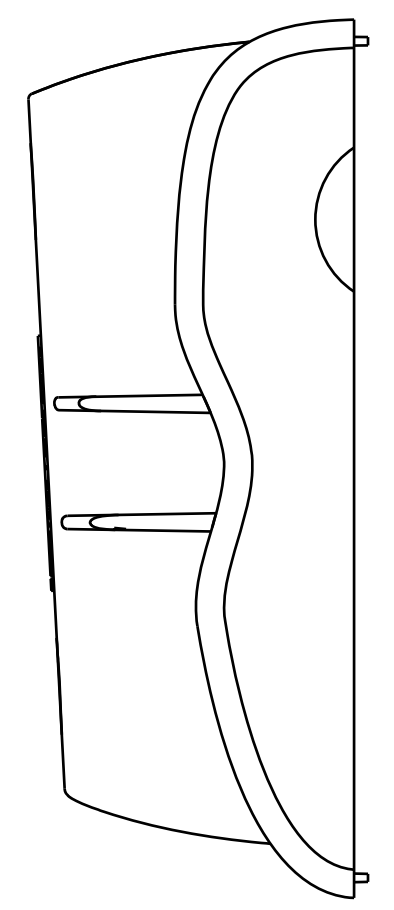
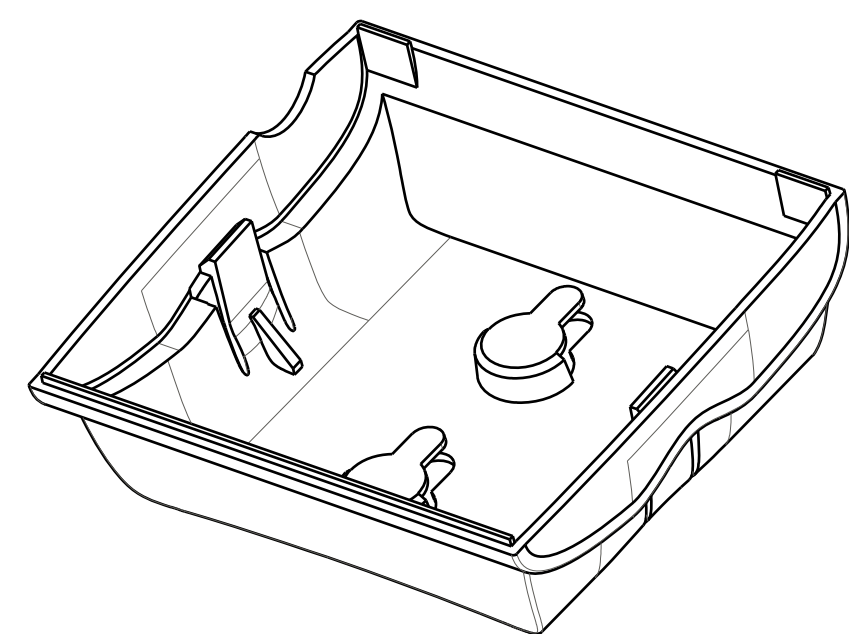
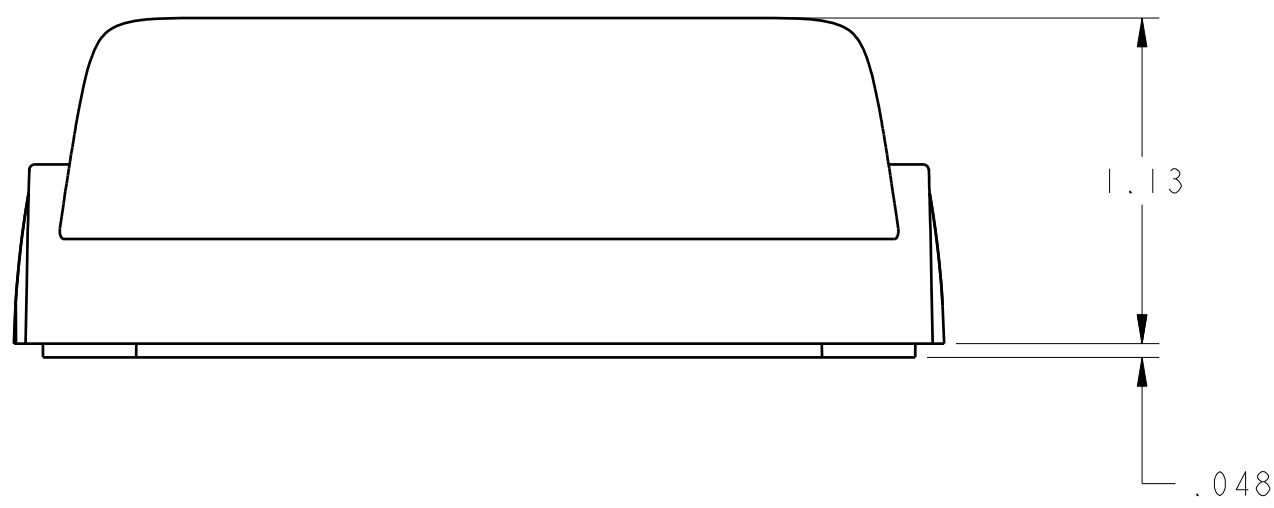
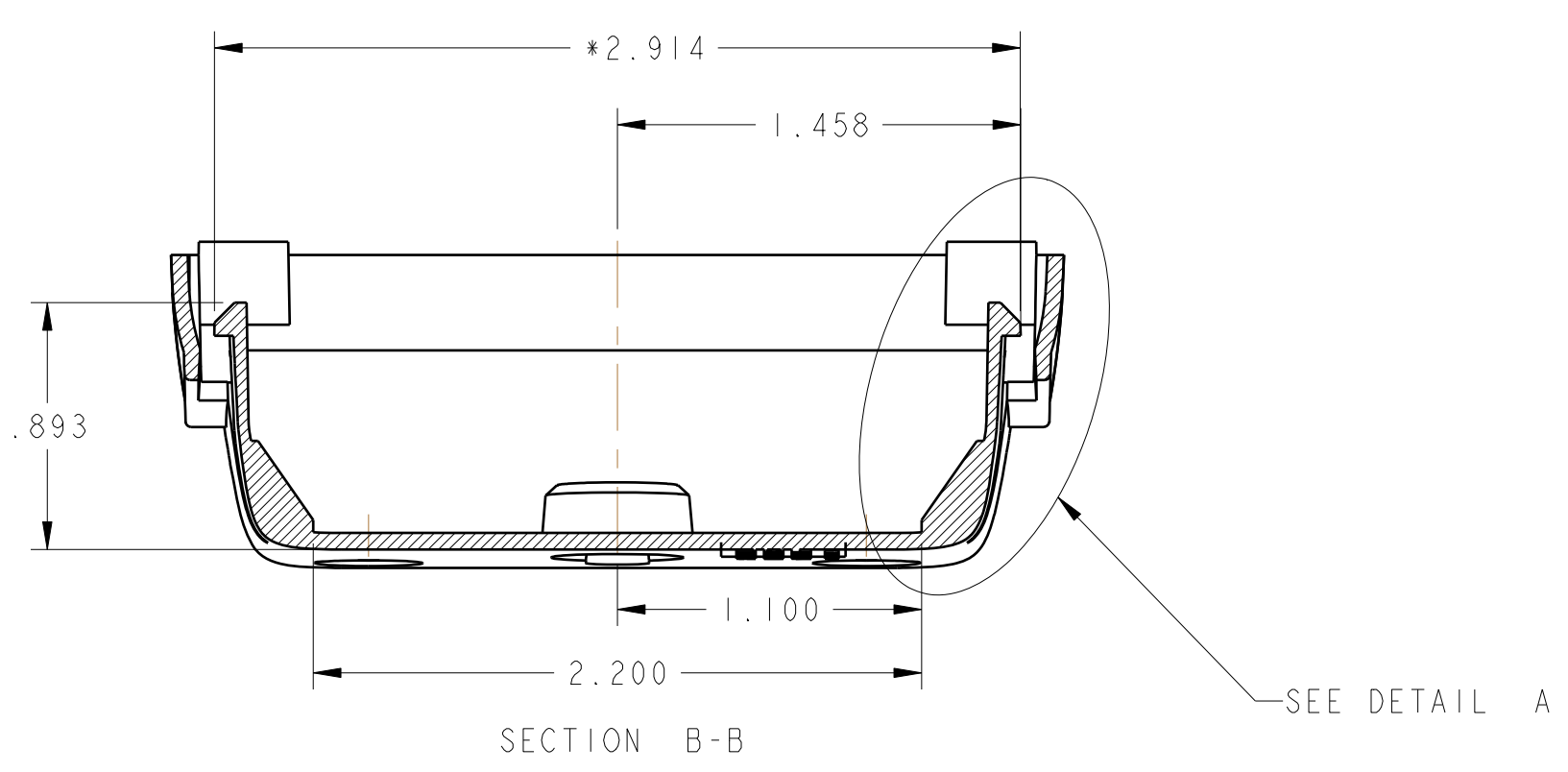


- NOTES:
- SEE CAD MODEL 093D0591 FOR FEATURE DIMENSIONS NOT CONTROLLED ON THIS DRAWING. TOLERANCES OF GEOMETRY ARE PER SPI "STANDARDS AND PRACTICES OF PLASTIC MOLDERS" ENGINEERING AND TECHNICAL STANDARDS FOR SPECIFIED MATERIAL. TOLERANCES DISPLAYED ON THIS DRAWING SUPERCEDE THOSE OF SPI. TOLERANCES UNDER .005 INCH ONLY APPLICABLE WHERE SPECIFIED ON THIS DRAWING.
 - MATERIAL: ABS, HIVAL HG6
 - COLOR: STANDARD BLACK
 - SEE CHAMBERLAIN STANDARD PRODUCT SPEC. 190A0280 FOR GENERAL TOOLING AND PROCESSING. SECTIONS 1.2 AND 1.3 DO NOT APPLY. REFER TO DATABASE.
 - GATE VESTIGE TO BE +.005 INCHES MAXIMUM OR BELOW SURFACE.
 - PART NUMBER, ISSUE LETTER & CAVITY NUMBER (IN MULTI-CAVITY TOOL) TO BE MOLDED IN THE AREA INDICATED IN 1/32 TO 1/8 INCH HIGH CHARACTERS. RAISED TO .010 INCH ABOVE THE SURFACE. ADJUSTABLE DATE CODE MOLDED IN USING TWO WHEELS: ONE FOR MONTH AND THE OTHER FOR YEAR. THE LETTERS MUST BE LEGIBLE.
 - EXTERIOR SURFACE TEXTURE: CLASS-A MOLDTECH MT-11020 EXCEPT WHERE NOTED (SEE SHEET 2)
 - COSMETIC SURFACES TO BE FREE OF DEFECTS, VISIBLE FROM 30CM. DEFECTS INCLUDE, BUT ARE NOT LIMITED TO SINK MARKS, SCRATCHES, GATING, BURN MARKS, BLUSH, ETC.
 - SURFACES WITH NO SPECIFIED FINISH TO BE IN THE RANGE OF SPI BI-C3 (TYPICAL UNLESS DIAMOND POLISH IS NEEDED).
 - DIMENSIONS MARKED WITH "*" ARE PROCESS CRITICAL AND NEED TO BE CONTROLLED AND MONITORED IN THE MANUFACTURING PROCESS. THESE DIMENSIONS ARE TO BE SELECTIVELY AUDITED AT CGI.
 - PARTS MUST COMPLY WITH HAZARDOUS MATERIALS REGULATIONS, AND COMPLIANCE MUST BE INDICATED ON EACH SHIPMENT PER 190A0790.
 - DIMENSIONS APPLY TO MAXIMUM/MINIMUM DRAFT UNLESS NOTIFIED

PART NUMBER: 093D0591		SHT 1 OF 2	C
ECN/DATE	BY	REVISIONS	REV
09-0119 27APR09	JP	INITIAL RELEASE	A
09-0271 11MAY09	JP	AT DWG LOC J4. ADDED MATERIAL TO SNAP FOR EASE OF ASSY. DIM 0.120 WAS 0.080. ADDED TWO GUSSETS AT LOC J8 TO IMPROVE PRODUCT. UPDATED NOTE-6 BY REMOVING VENDOR ID & ISO MAT'L DESIGNATION	B
09-0252 18MAY09	JP	ADDED FCC LABEL AREA AT LOC E14. ADDED CRITICAL "*" TO DIM 2.914 AT LOC G8. ADDED DIM 0.50 .286 & .225 AT LOC J5 & D10	C



DETAIL A
SCALE 3.000



<p>THIRD ANGLE PROJECTION</p>		<p>CHAMBERLAIN</p>	
<p>DO NOT SCALE DRAWING</p>		<p>MATERIAL: SEE NOTES</p>	
<p>FINISH: SEE NOTES</p>		<p>PART NUMBER: 093D0591</p>	
<p>THIS IS A COMPUTER GENERATED DRAWING DO NOT CHANGE THIS DOCUMENT WITHOUT UPDATING THE COMPUTER DATABASE</p>	<p>THIS COPY ISSUED:</p>	<p>DRAWN: JP</p>	<p>DATE: 06APR09</p>
<p>TOLERANCES EXCEPT AS NOTED: F101 ±0.01 AND .005 ON HOLES ±0.003</p>	<p>FINISH: SEE NOTES</p>	<p>SCALE: 1.50</p>	<p>SHEET: 1 OF 2</p>