
FCC Test Report

Report No.: AGC14G120401-5F1

FCC ID : JJMFUSION

PRODUCT DESIGNATION : GSM/WCDMA mobile phone/Smart phone (Fusion)

BRAND NAME : NUQLEO

MODEL NAME : QS-G3UCT1BK, QS-G3UCT1BL, QS-G3UCT1RD,
QS-G3UCT1WH, QS-G3UCT1SL, QS-G3UCT1YL,
QS-G3UCT1PR, QS-G3UCT1GN, QS-G3UCT1PK,
QS-G3UCT1OR

CLIENT : Accvent LLC

DATE OF ISSUE : May 14, 2012

STANDARD(S) : FCC Part 15 Rules

REPORT VERSION : V1.0

Attestation of Global Compliance Co., Ltd.

1. CAUTION: This report shall not be reproduced except in full without the written permission of the test laboratory and shall not be quoted out of context.

TABLE OF CONTENTS

1. VERIFICATION OF COMPLIANCE	2
2. PRODUCT INFORMATION	3
3. TEST FACILITY	4
4. SUPPORT EQUIPMENT LIST	5
5. SYSTEM DESCRIPTION	5
6 SUMMARY OF TEST RESULTS	6
7. FCC LINE CONDUCTED EMISSION TEST	7
7.1. TEST EQUIPMENT OF LINE CONDUCTED EMISSION TEST.....	7
7.2 .LIMITS OF LINE CONDUCTED EMISSION TEST	7
7.3. BLOCK DIAGRAM OF LINE CONDUCTED EMISSION TEST	7
7.4. PROCEDURE OF LINE CONDUCTED EMISSION TEST	8
7.5 TEST RESULT OF LINE CONDUCTED EMISSION TEST.....	9
8. FCC RADIATED EMISSION TEST	11
8.1. TEST EQUIPMENT OF RADIATED EMISSION	11
8.2. LIMITS OF RADIATED EMISSION TEST	11
8.3 BLOCK DIAGRAM OF RADIATED EMISSION TEST.....	11
8.4 PROCEDURE OF RADIATED EMISSION TEST	11
8.4 PROCEDURE OF RADIATED EMISSION TEST	12
8.5 TEST RESULT OF RADIATED EMISSION TEST	13
APPENDIX 1	15
PHOTOGRAPHS OF TEST SETUP	15
APPENDIX 2.....	16
PHOTOGRAPHS OF EUT	16

1. VERIFICATION OF COMPLIANCE

Applicant:	Accvent LLC
	454 Holiday Drive Hallandale, Florida, 33009. USA
Manufacturer:	Accvent LLC
	454 Holiday Drive Hallandale, Florida, 33009. USA
Product Designation:	GSM/WCDMA mobile phone/Smart phone (Fusion)
Brand name:	NUQLEO
Test Model:	QS-G3UCT1BK
Series Model:	QS-G3UCT1BL, QS-G3UCT1RD, QS-G3UCT1WH, QS-G3UCT1SL, QS-G3UCT1YL, QS-G3UCT1PR, QS-G3UCT1GN, QS-G3UCT1PK, QS-G3UCT1OR
Model Difference:	All above models are the except for appearance.
FCC ID:	JJMFUSION
Measurement Procedure:	ANSI C63.4: 2003
File Number:	AGC14G120401-5F1
Date of test:	May 04 to May 12, 2012

The above equipment was tested by Attestation Of Global Compliance Co., Ltd. for compliance with the requirements set forth in the FCC Rules and Regulations Part 15, the measurement procedure according to ANSI C63.4:2003. This said equipment in the configuration described in this report shows the maximum emission levels emanating from equipment are within the compliance requirements.

The test results of this report relate only to the tested sample identified in this report.

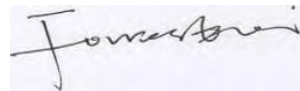
Tested By :



Leo Lee

May 14, 2012

Reviewed By :



Forrest Lei

May 14, 2012

Approved By:



Solger Zhang

May 14, 2012

2. PRODUCT INFORMATION

Housing Type: Plastic

EUT Rating Voltage: DC 3.7V by battery

Adapter Input AC100~240V,50/60Hz,0.5A

Adapter output DC 5V, 500mA

I/O Port Information (☒Applicable ☐Not Applicable)

I/O Port of EUT			
I/O Port Type	Q'TY	Cable	Tested with
USB PORT	1	1.2m,unshielded	1

3. TEST FACILITY

Facility	Attestation of Global Compliance Co., Ltd.
Location:	2F, No.2 Building, Huafeng No.1 Technical, Industrial Park, Sanwei, Xixiang, Baoan District, Shenzhen, China
Description:	The test site is constructed and calibrated to meet the FCC requirements in documents ANSI C63.4:2003.
Site Filing:	The FCC Registration Number is 259865
Instrument Tolerance:	All measuring equipment is in accord with ANSI C63.4 requirements that meet industry regulatory agency and accreditation agency requirement.

4. SUPPORT EQUIPMENT LIST

Device Type	Manufacturer	Model Name	Serial No.	Data Cable	Power Cable
PC	Dell	Inpiron N4110	N/A	N/A	1.5m unshielded

**Note: All the above equipment/cables were placed in worse case positions to maximize emission signals during emission test.

5. SYSTEM DESCRIPTION

EUT test procedure:

1. Connect EUT and peripheral devices (if need).
2. Power on the EUT, the EUT begins to work.
3. Make sure the EUT operates normally during the test.

Test Mode

USB (connection for date transferring)
Other modes have been tested via the procedure of verification of confirm.

6. SUMMARY OF TEST RESULTS

FCC Rules	Description Of Test	Result
§15.107	Conduction Emission	Compliant
§15.109	Radiated Emission	Compliant

Measurement uncertainty:

Conducted measurement: +/- 2.75dB

Radiated measurement: +/- 3.2dB

7. FCC LINE CONDUCTED EMISSION TEST

7.1. TEST EQUIPMENT OF LINE CONDUCTED EMISSION TEST

Description	Manufacturer	Model	Identifier	Cal. Date	Cal. Due
TEST RECEIVER	R&S	ESCI	N/A	06/27/2011	06/26/2012
LISN	R&S	ESH3-Z5	N/A	06/27/2011	06/26/2012
AMN	R&S	ESH2-Z5	862060/020	06/27/2011	06/26/2012

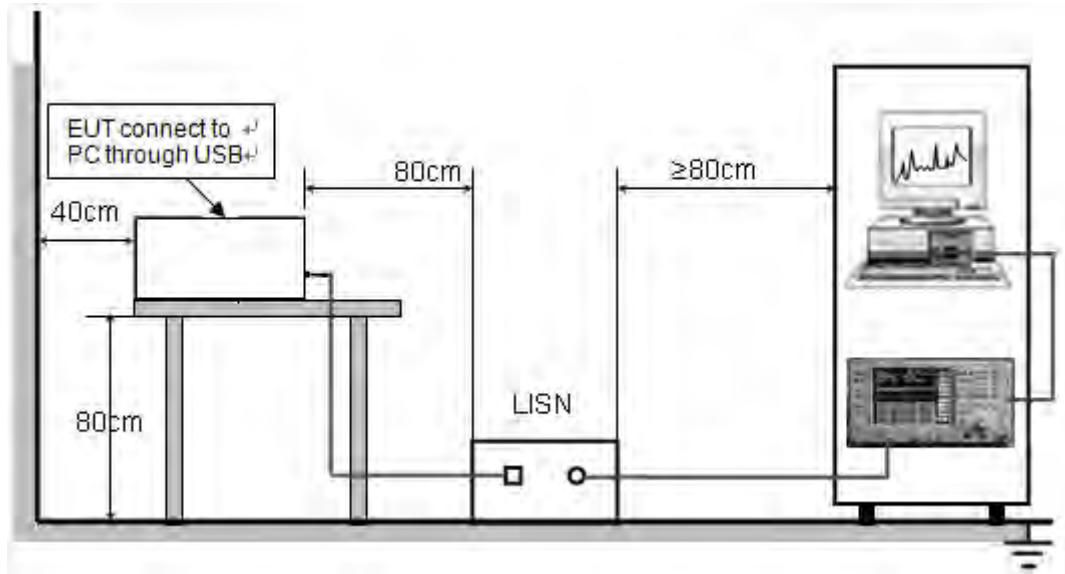
7.2 .LIMITS OF LINE CONDUCTED EMISSION TEST

Frequency	Maximum RF Line Voltage	
	Q.P.(dBuV)	Average(dBuV)
150kHz~500kHz	66-56	56-46
500kHz~5MHz	56	46
5MHz~30MHz	60	50

**Note: 1. The lower limit shall apply at the transition frequency.

2. The limit decreases linearly with the logarithm of the frequency in the range 0.15 MHz to 0.50 MHz

7.3. BLOCK DIAGRAM OF LINE CONDUCTED EMISSION TEST



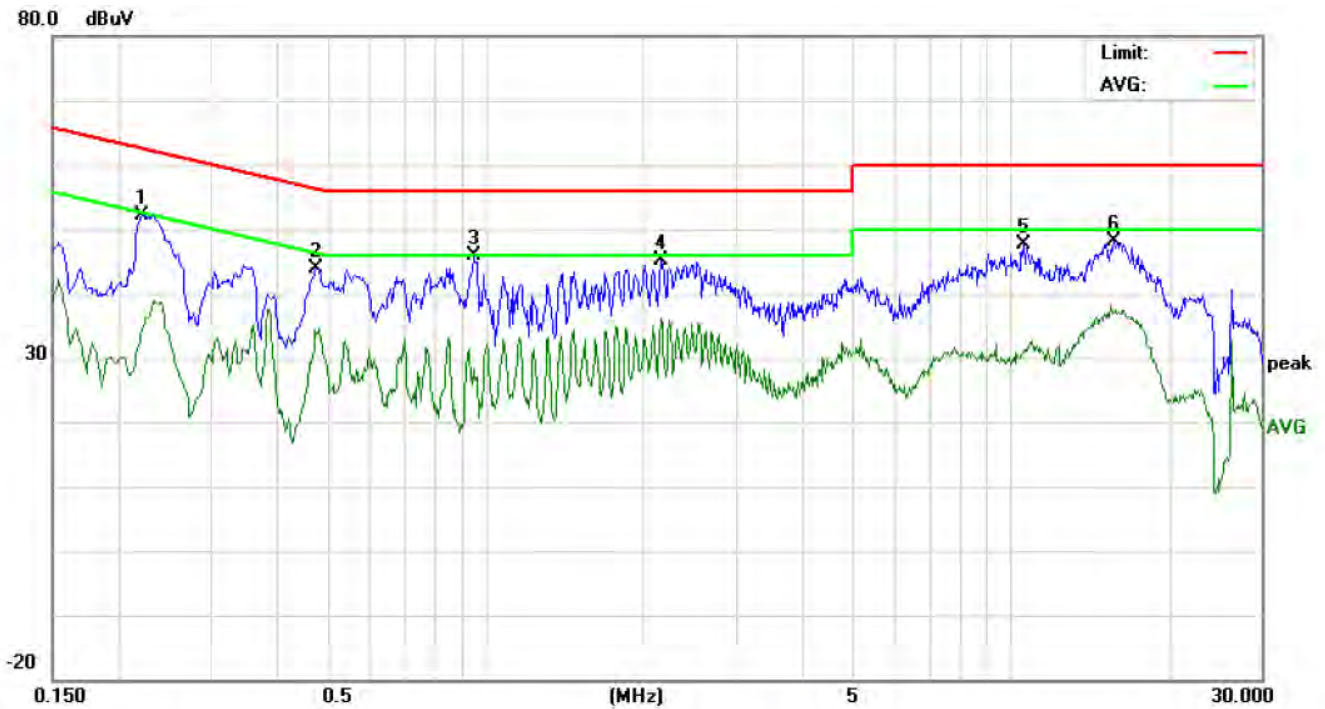
7.4. PROCEDURE OF LINE CONDUCTED EMISSION TEST

- 1) The equipment was set up as per the test configuration to simulate typical actual usage per the user's manual. When the EUT is a tabletop system, a wooden table with a height of 0.8 meters is used and is placed on the ground plane as per ANSI C63.4 (see Test Facility for the dimensions of the ground plane used). When the EUT is a floor-standing equipment, it is placed on the ground plane which has a 3-12 mm non-conductive covering to insulate the EUT from the ground plane.
- 2) Support equipment, if needed, was placed as per ANSI C63.4.
- 3) All I/O cables were positioned to simulate typical actual usage as per ANSI C63.4.
- 4) The EUT received DC5V power from PC which receive 120V/60Hz power from a LISN.
- 5) The EUT test program was started. Emissions were measured on each current carrying line of the EUT using a spectrum Analyzer / Receiver connected to the LISN powering the EUT. The LISN has two monitoring points: Line 1 (Hot Side) and Line 2 (Neutral Side). Two scans were taken: one with Line 1 connected to Analyzer / Receiver and Line 2 connected to a 50 ohm load; the second scan had Line 1 connected to a 50 ohm load and Line 2 connected to the Analyzer / Receiver.
- 6) Analyzer / Receiver scanned from 150 kHz to 30MHz for emissions in each of the test modes.
- 7) During the above scans, the emissions were maximized by cable manipulation.
- 8) A scan was taken on both power lines, Line 1 and Line 2, recording at least the six highest emissions.
- 9) Emission frequency and amplitude were recorded into a computer in which correction factors were used to calculate the emission level and compare reading to the applicable limit. If EUT emission level was less -2dB to the A.V. limit in Peak mode, then the emission signal was re-checked using Q.P and Average detector.

The test data of the worst case condition was reported on the Summary Data page.

7.5 TEST RESULT OF LINE CONDUCTED EMISSION TEST

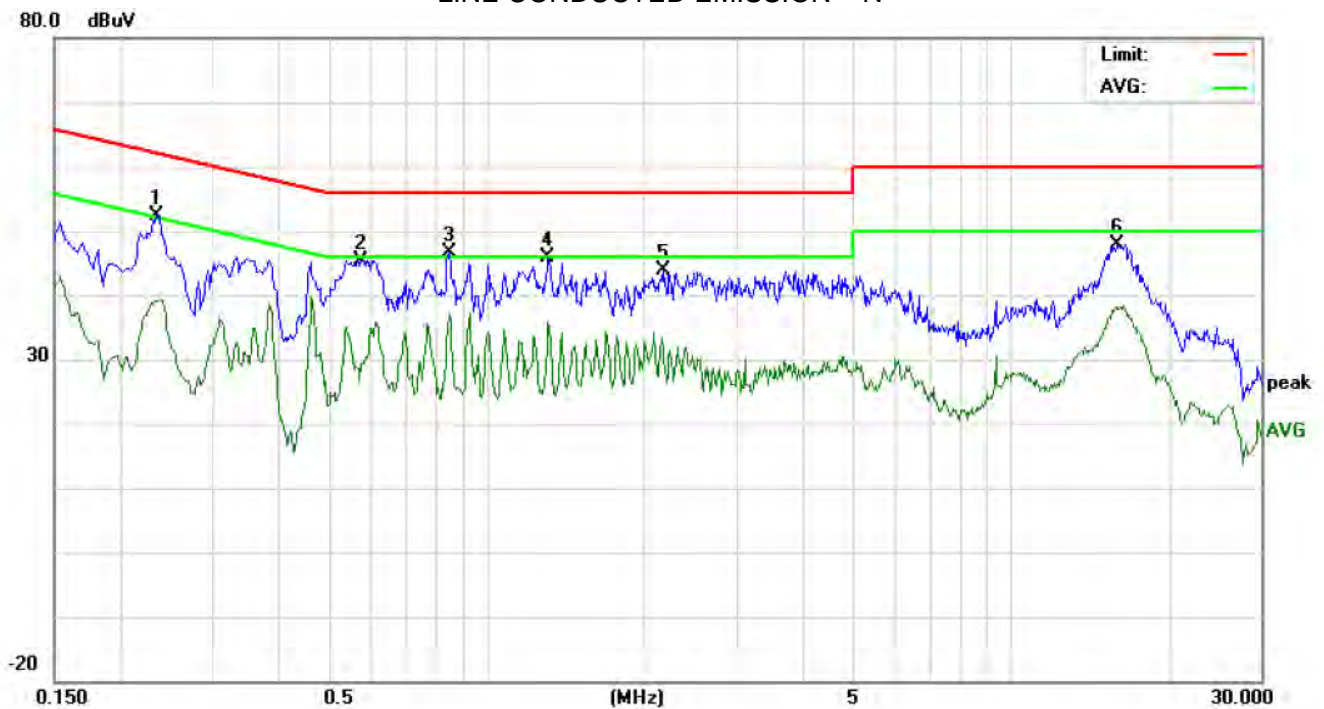
LINE CONDUCTED EMISSION - L



Site: Conduction Phase: **L1** Temperature: 26
Limit: FCC Class B Conduction(QP) Power: Humidity: 60 %
EUT: GSM/WCDMA mobile phone/Smart phone(Fusion)
M/N: QS-G3GUCT1BK
Mode: USB
Note:

No.	Freq. (MHz)	Reading_Level (dBuV)			Correct Factor dB	Measurement (dBuV)			Limit (dBuV)		Margin (dB)		P/F	Comment
		Peak	QP	AVG		Peak	QP	AVG	QP	AVG	QP	AVG		
1	0.2220	41.99		24.12	10.24	52.23		34.36	62.74	52.74	-10.51	-18.38	P	
2	0.4778	33.51		23.30	10.38	43.89		33.68	56.38	46.38	-12.49	-12.70	P	
3	0.9495	35.44		18.10	10.39	45.83		28.49	56.00	46.00	-10.17	-17.51	P	
4	2.1659	34.81		25.81	10.29	45.10		36.10	56.00	46.00	-10.90	-9.90	P	
5	10.5859	37.48		20.74	10.10	47.58		30.84	60.00	50.00	-12.42	-19.16	P	
6	15.7499	38.10		27.12	10.11	48.21		37.23	60.00	50.00	-11.79	-12.77	P	

LINE CONDUCTED EMISSION – N



Site: Conduction Phase: **N** Temperature: 26
Limit: FCC Class B Conduction(QP) Power: Humidity: 60 %
EUT: GSM/WCDMA mobile phone/Smart phone(Fusion)
M/N: QS-G3GUCT1BK
Mode: USB
Note:

No.	Freq. (MHz)	Reading_Level (dBuV)			Correct Factor dB	Measurement (dBuV)			Limit (dBuV)		Margin (dB)		P/F	Comment
		Peak	QP	AVG		Peak	QP	AVG	QP	AVG	QP	AVG		
1	0.2341	42.08		28.82	10.25	52.33		39.07	62.30	52.30	-9.97	-13.23	P	
2	0.5776	35.12		19.12	10.33	45.45		29.45	56.00	46.00	-10.55	-16.55	P	
3	0.8497	36.22		26.83	10.34	46.56		37.17	56.00	46.00	-9.44	-8.83	P	
4	1.3140	35.44		25.38	10.38	45.82		35.76	56.00	46.00	-10.18	-10.24	P	
5	2.1699	33.58		21.59	10.29	43.87		31.88	56.00	46.00	-12.13	-14.12	P	
6	16.0178	37.83		27.99	10.11	47.94		38.10	60.00	50.00	-12.06	-11.90	P	

8. FCC RADIATED EMISSION TEST

8.1. TEST EQUIPMENT OF RADIATED EMISSION

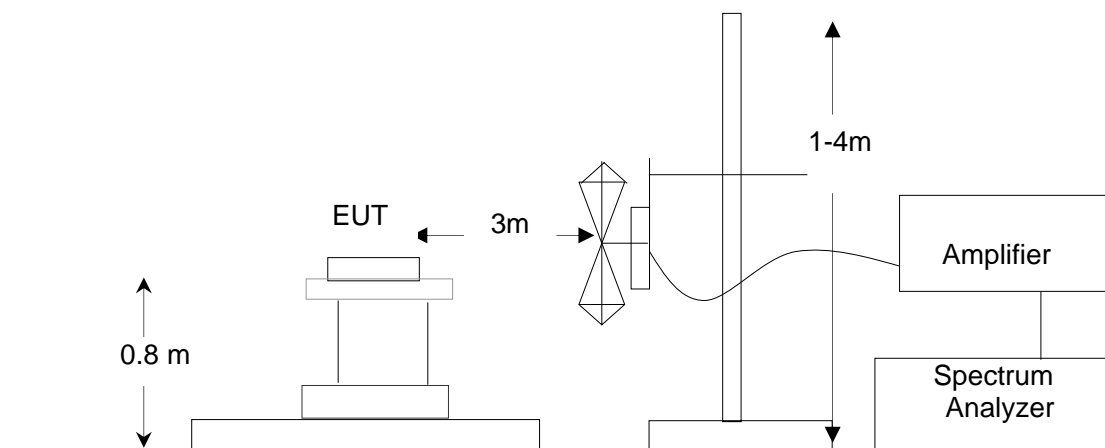
Description	Manufacturer	Model	Identifier	Cal. Date	Cal. Due
PSA SERIES SPECTRUM ANALYZER	AGILENT	E4440A	US41421290	06/27/2011	06/26/2012
ANTENNA	A.H.	SAS-521-4	128	06/27/2011	06/26/2012
HORN ANTENNA	EM	EM-AH-10180	N/A	06/27/2011	06/26/2012
AMPLIFIER	EM	EM30180	0607030	06/27/2011	06/26/2012
POSITIONING CONTROLLER	MF	MF-7802	MF780208147	06/27/2011	06/26/2012

8.2. LIMITS OF RADIATED EMISSION TEST

Frequency (MHz)	Distance (m)	Maximum Field Strength Limit (dBuV/m/ Q.P.)
30~88	3	40.0
88~216	3	43.5
216~960	3	46.0
Above 960	3	54.0

**Note: The lower limit shall apply at the transition frequency.

8.3 BLOCK DIAGRAM OF RADIATED EMISSION TEST



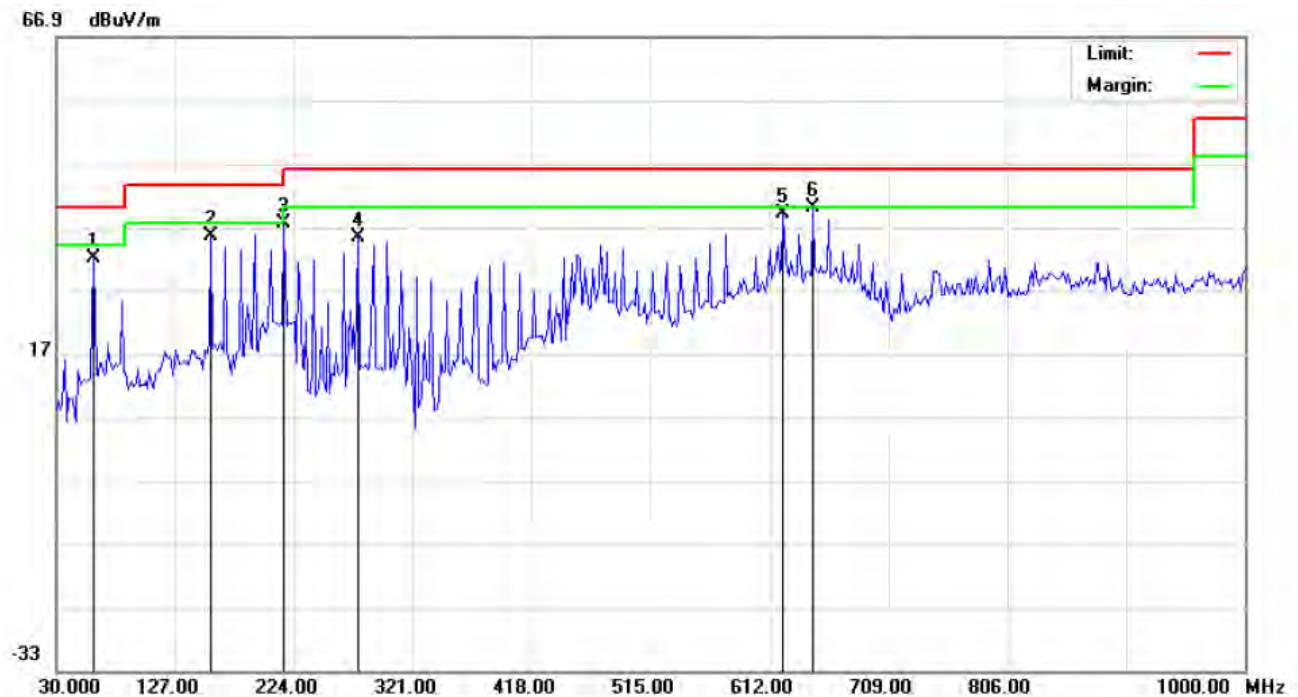
8.4 PROCEDURE OF RADIATED EMISSION TEST

- 1) The equipment was set up as per the test configuration to simulate typical actual usage per the user's manual. When the EUT is a tabletop system, a wooden turntable with a height of 0.8 meters is used which is placed on the ground plane as per ANSI C63.4 (see Test Facility for the dimensions of the ground plane used). When the EUT is floor-standing equipment, it is placed on the ground plane which has a 3-12 mm non-conductive covering to insulate the EUT from the ground plane.
- 2) Support equipment, if needed, was placed as per ANSI C63.4.
- 3) All I/O cables were positioned to simulate typical actual usage as per ANSI C63.4.
- 4) The EUT received DC 5V power from PC which receive 120V/60Hz power from socket under the turntable through a LISN.
- 5) The antenna was placed at 3 meter away from the EUT as stated in FCC Part 15. The antenna connected to the Analyzer via a cable and at times a pre-amplifier would be used.
- 6) The Analyzer / Receiver quickly scanned from 30MHz to 1000MHz. The EUT test program was started. Emissions were scanned and measured rotating the EUT to 360 degrees and positioning the antenna 1 to 4 meters above the ground plane, in both the vertical and the horizontal polarization, to maximize the emission reading level.
- 7) The test mode(s) were scanned during the test:
- 8) Recorded at least the six highest emissions. Emission frequency, amplitude, antenna position, polarization and turntable position were recorded into a computer in which correction factors were used to calculate the emission level and compare reading to the applicable limit and Q.P./Peak reading is presented.

The test data of the worst case condition was reported on the Summary Data page.

8.5 TEST RESULT OF RADIATED EMISSION TEST

Radiated Emission Test –Horizontal -3m



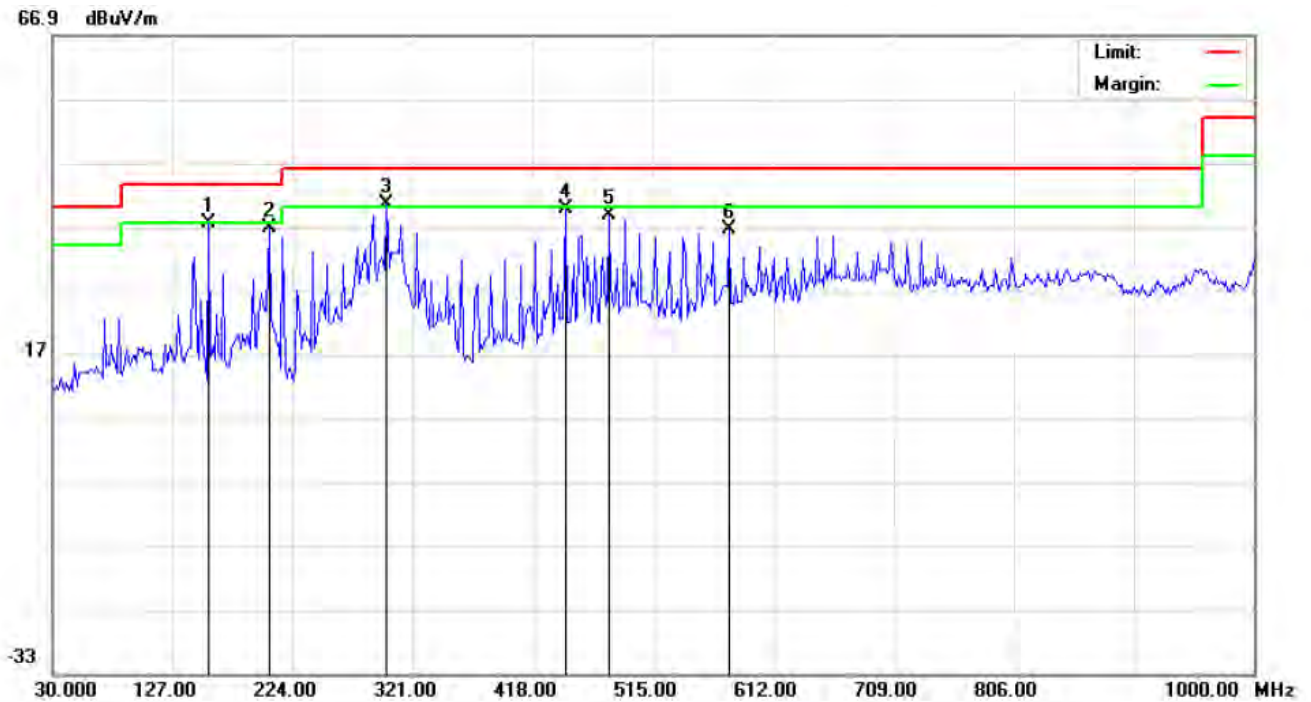
Site: site #1
Limit: FCC Class B 3M Radiation
EUT: GSM/WCDMA mobile phone/Smart phone
M/N: QS-G3UCT1BK
Mode: USB
Note:

Polarization: **Horizontal**
Power:
Distance:

Temperature: 26
Humidity: 60 %

No.	Mk	Freq.	Reading	Factor	Measurement	Limit	Over	Detector	Antenna Height	Table Degree	Comment
		MHz	dBuV	dB/m	dBuV/m	dBuV/m	dB		cm	degree	
1		60.7167	27.95	4.06	32.01	40.00	-7.99	peak			
2		156.1000	21.72	13.74	35.46	43.50	-8.04	peak			
3		215.9167	26.49	10.93	37.42	43.50	-6.08	peak			
4		275.7333	18.15	17.20	35.35	46.00	-10.65	peak			
5		623.3167	13.96	25.01	38.97	46.00	-7.03	peak			
6	*	647.5667	15.64	24.39	40.03	46.00	-5.97	peak			

Radiated Emission Test –Vertical -3m



Site: site #1
Limit: FCC Class B 3M Radiation
EUT: GSM/WCDMA mobile phone/Smart phone
M/N: QS-G3UCT1BK
Mode: USB
Note:

Polarization: **Vertical**
Power:
Distance:

Temperature: 26
Humidity: 60 %

No.	Mk	Freq.	Reading	Factor	Measurement	Limit	Over	Detector	Antenna Height	Table Degree	Comment
		MHz	dBuV	dB/m	dBuV/m	dBuV/m	dB		cm	degree	
1		156.1000	21.60	15.83	37.43	43.50	-6.07	peak			
2		204.6000	28.75	7.96	36.71	43.50	-6.79	peak			
3	*	299.9833	23.51	17.00	40.51	46.00	-5.49	peak			
4		443.8667	18.17	21.49	39.66	46.00	-6.34	peak			
5		479.4333	17.11	21.67	38.78	46.00	-7.22	peak			
6		576.4333	12.04	24.54	36.58	46.00	-9.42	peak			

Note: All Other modes above 1GHz have more than 20db margin, no recording in the report

Measurement = Reading + Factor, Over = Measurement – Limit.

APPENDIX 1
PHOTOGRAPHS OF TEST SETUP
FCC LINE CONDUCTED EMISSION TEST SETUP



FCC RADIATED EMISSION TEST SETUP



APPENDIX 2 PHOTOGRAPHS OF EUT

TOTAL VIEW OF EUT



TOP VIEW OF EUT



BOTTOM VIEW OF EUT



FRONT VIEW OF EUT



BACK VIEW OF EUT



LEFT VIEW OF EUT



RIGHT VIEW OF EUT



OPEN VIEW OF EUT-1



INTERNAL VIEW OF EUT-1



INTERNAL VIEW OF EUT-2



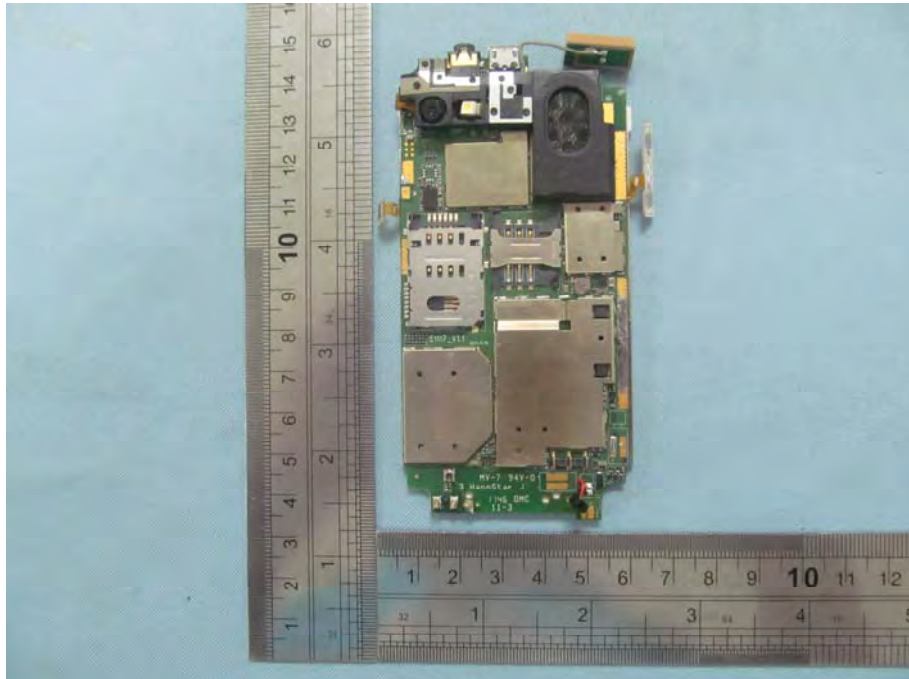
INTERNAL VIEW OF EUT-3



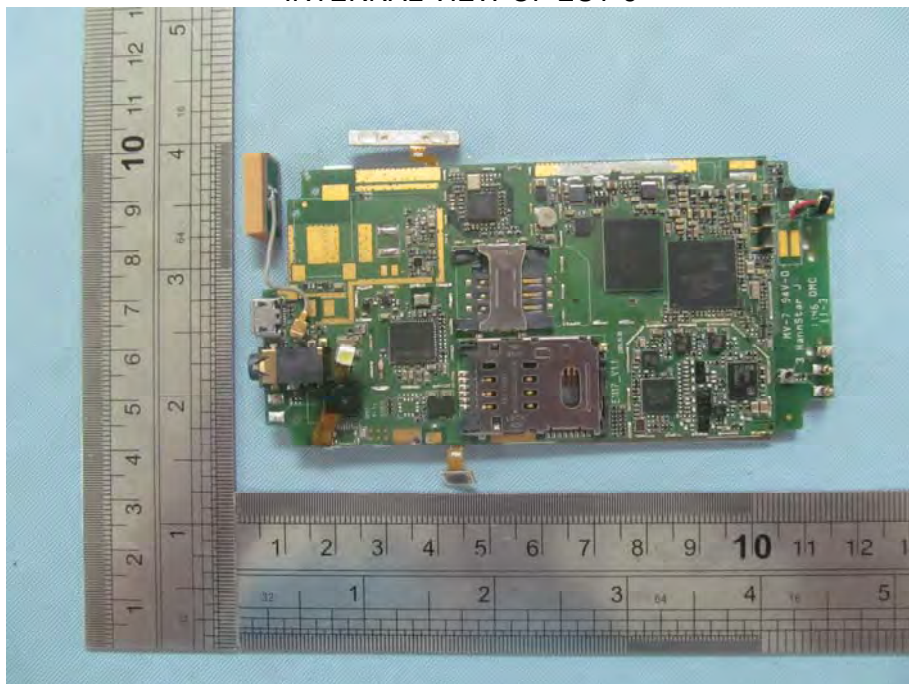
INTERNAL VIEW OF EUT-4



INTERNAL VIEW OF EUT-5



INTERNAL VIEW OF EUT-6



----END OF REPORT----