

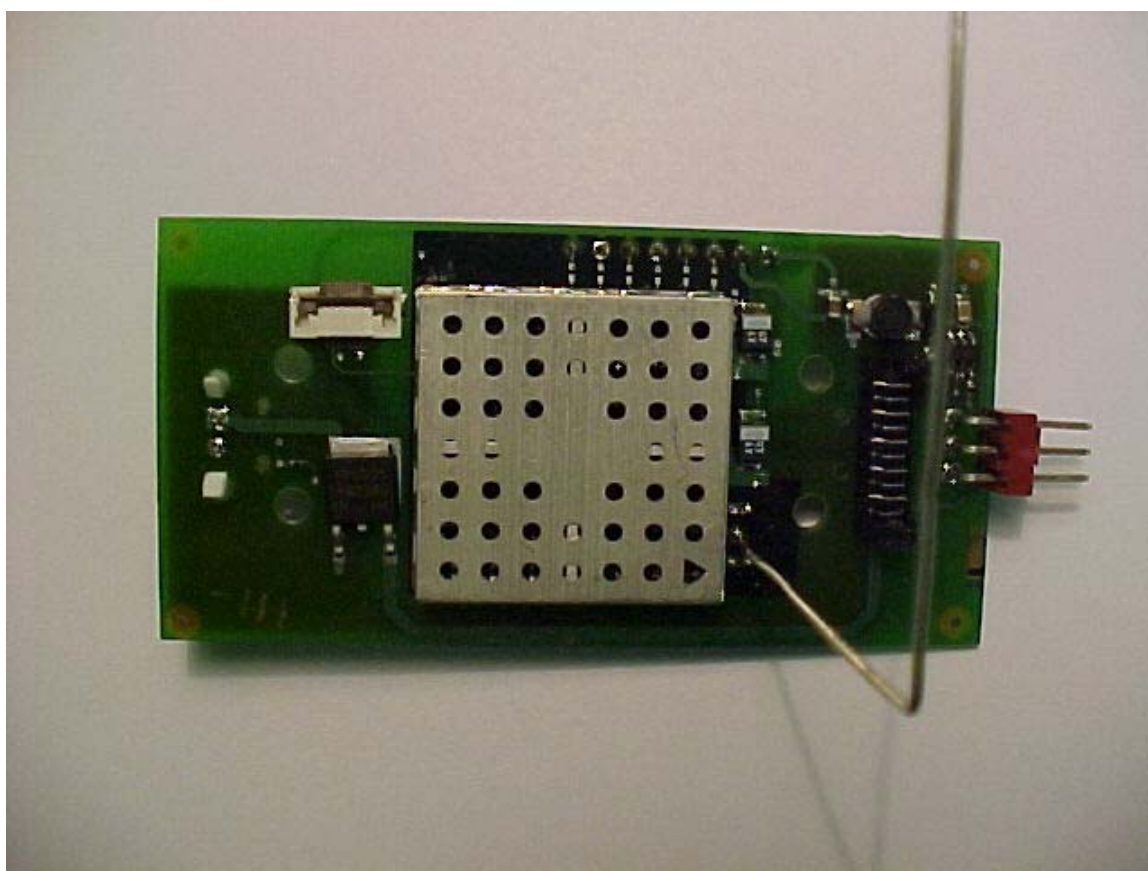
Graco Incorporated

FHSS Module
902 - 928 MHz Digital Radio

FCC ID#: JHI GNET

Photo One – External

Module configuration with Wire Antenna configured above PCB



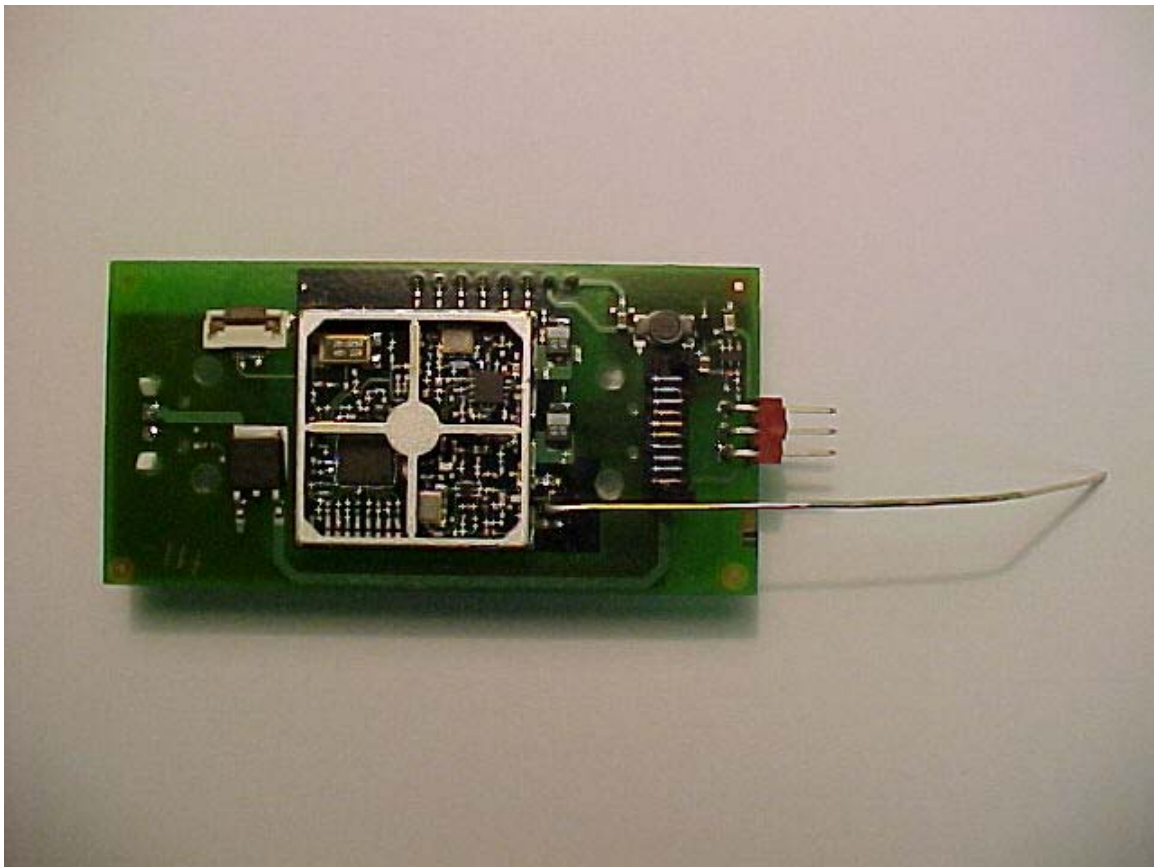
Graco Incorporated

**FHSS Module
902 - 928 MHz Digital Radio**

FCC ID#: JHI GNET

Photo Two – External

Module configuration with Wire Antenna configured extended parallel to PCB



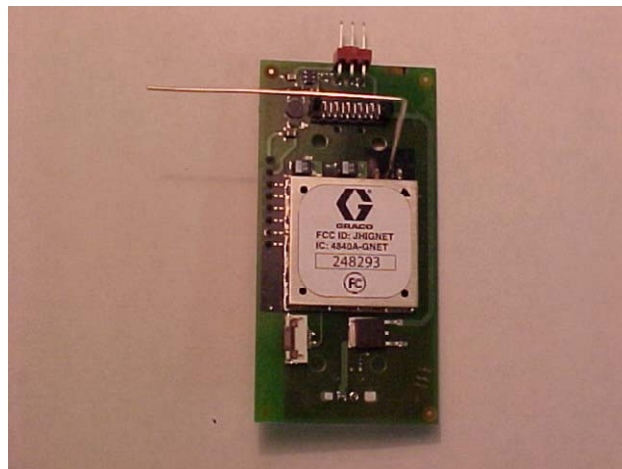
Graco Incorporated

FHSS Module
902 – 928 MHz Digital Radio

FCC ID#: JHIGNET

Photo Three – External

Close-up of FCC ID Label on the Modules Shielding Surface



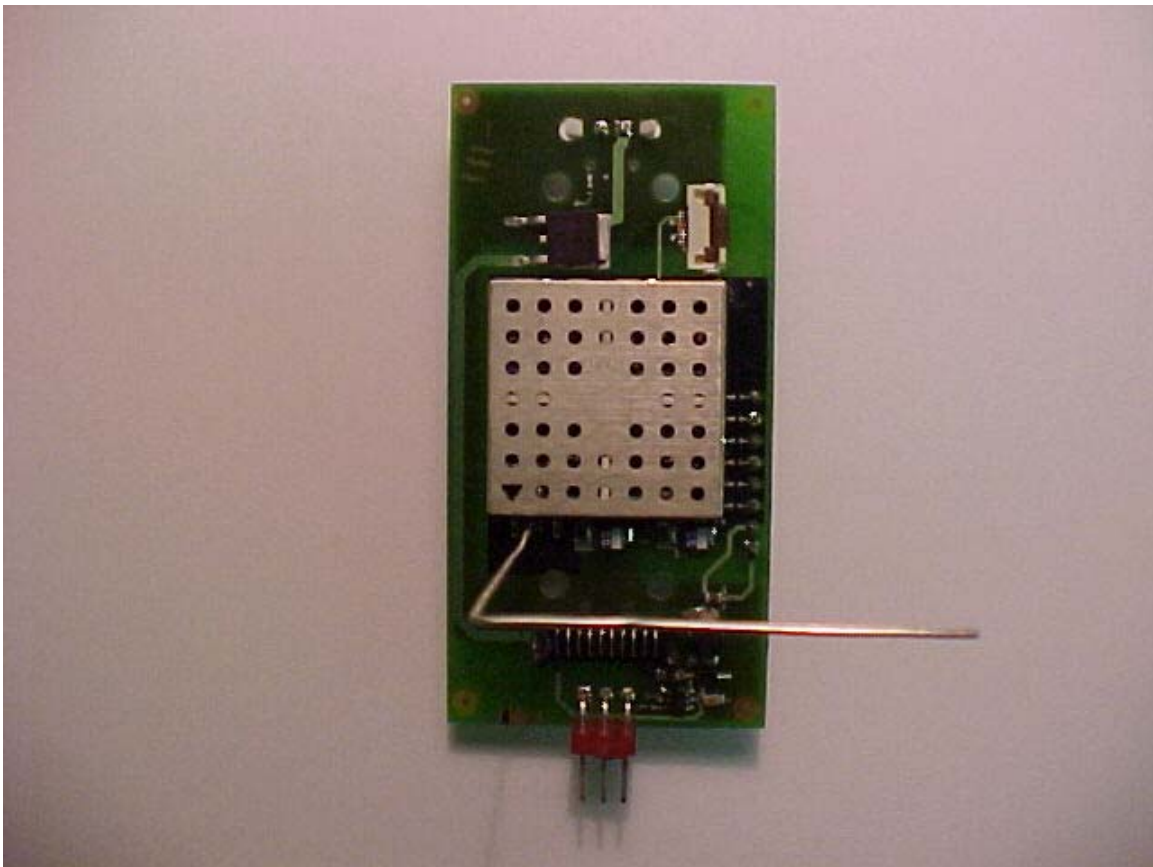
Graco Incorporated

**FHSS Module
902 - 928 MHz Digital Radio**

FCC ID#: JHI GNET

Photo Four – External

Another view of the Wire Antenna above the PCB



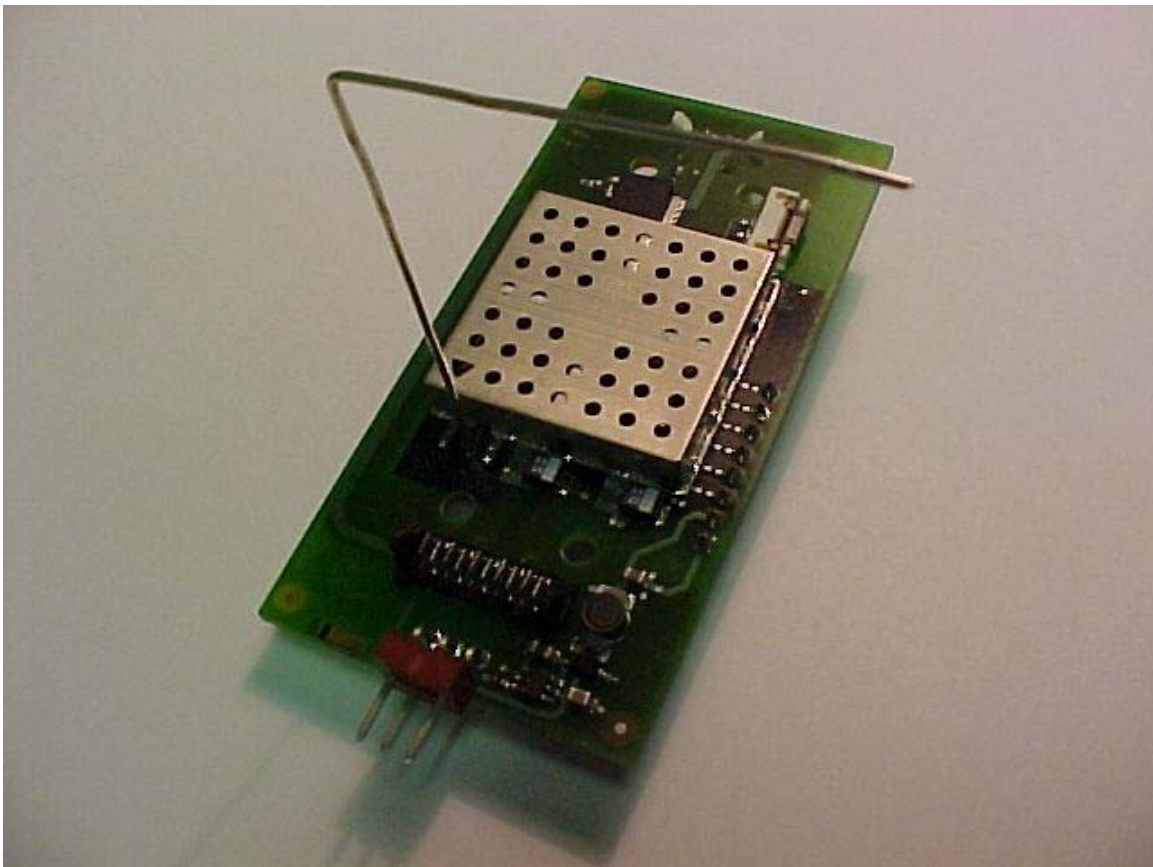
Graco Incorporated

**FHSS Module
902 - 928 MHz Digital Radio**

FCC ID#: JHI GNET

Photo Five – External

Angle view of the Wire Antenna above the PCB



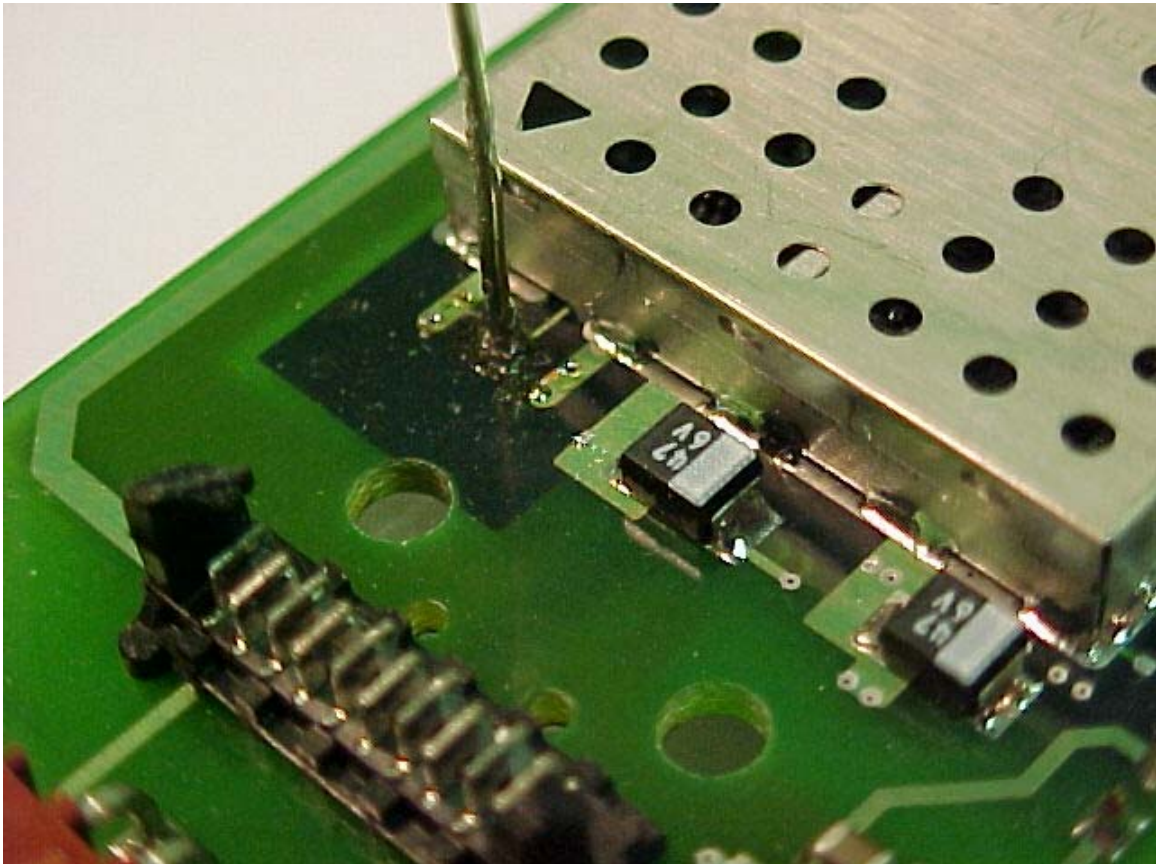
Graco Incorporated

**FHSS Module
902 - 928 MHz Digital Radio**

FCC ID#: JHI GNET

Photo Six – External

**Close up of Wire Antenna Attachment
This applies for both Above and Parallel Antennas**



Graco Incorporated

FHSS Module
902 - 928 MHz Digital Radio

FCC ID#: JHI GNET

Photo Seven – External

Close up of Wire Antenna Attachment
This represents the parallel Antenna Configuration

