

---

**APPENDIX 4: Photographs of test setup**

**Photographs of EUT**

Photograph A1: Front



Photograph A4: Rear



Photograph A2: Left



Photograph A5: Right



Photograph A3: Top



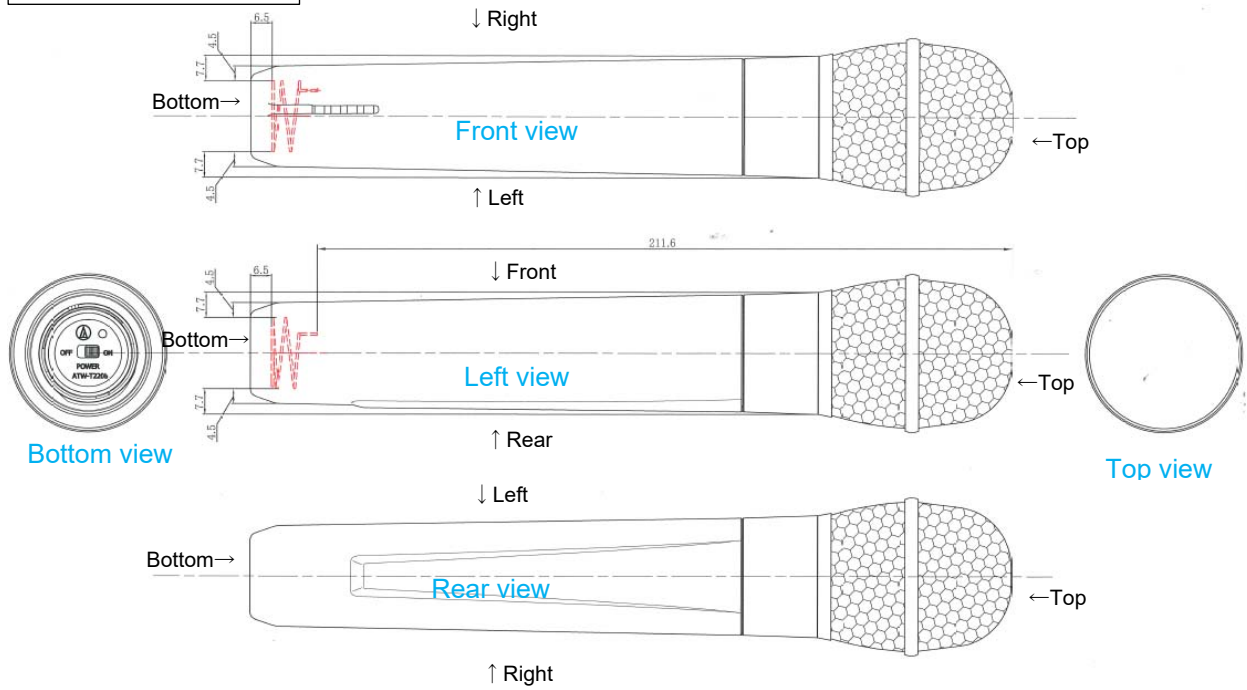
Photograph A6: Bottom




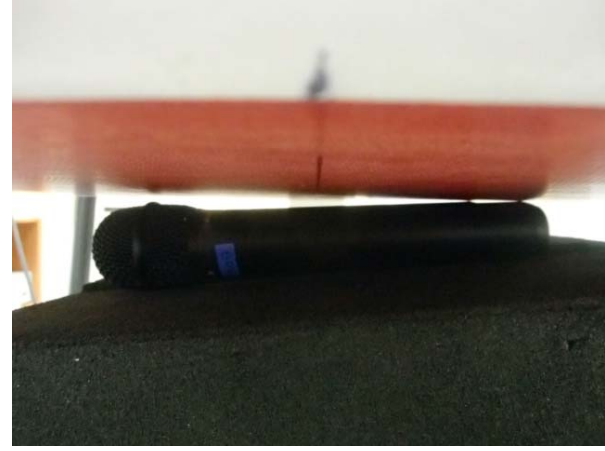
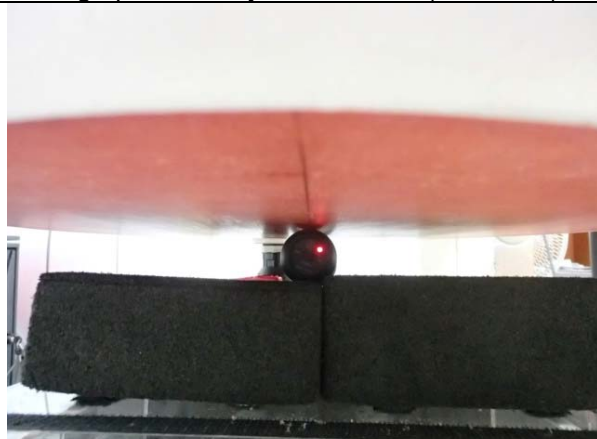
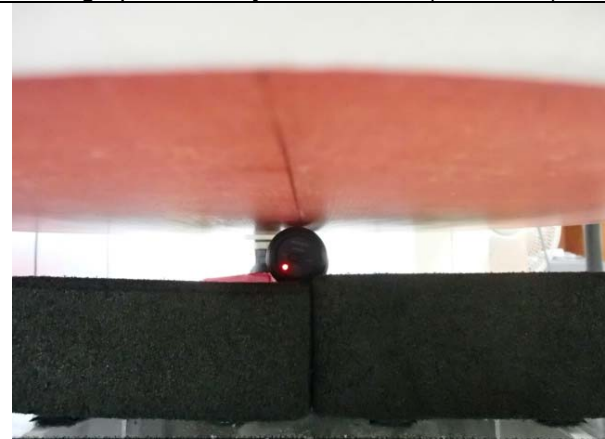
### Antenna position

Unit: mm

Red area is antenna



**Photographs of setup**

Photograph B1: Body, Front, 0 mm (Front view)	Photograph B3: Body, Rear, 0 mm (Front view)
	
Photograph B2: Body, Front, 0 mm (Side view)	Photograph B4: Body, Rear, 0 mm (Side view)
	

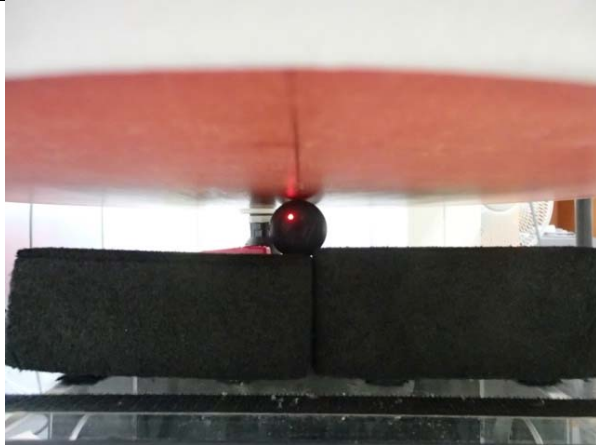
Photograph B5: Body, Left, 0 mm (Front view)



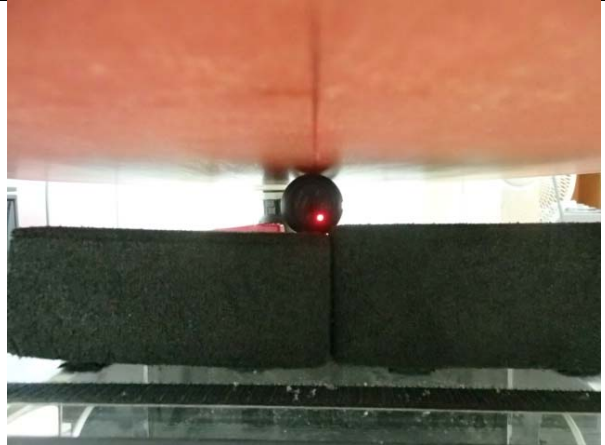
Photograph B7: Body, Right, 0 mm (Front view)



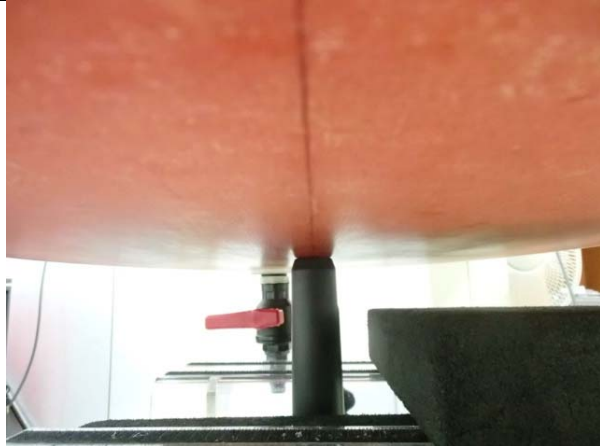
Photograph B6: Body, Left, 0 mm (Side view)



Photograph B8: Body, Right, 0 mm (Side view)



Photograph B9: Body, Bottom, 0 mm (Front view)



Photograph B10: Body, Bottom, 0 mm (Side view)



**End of Report**