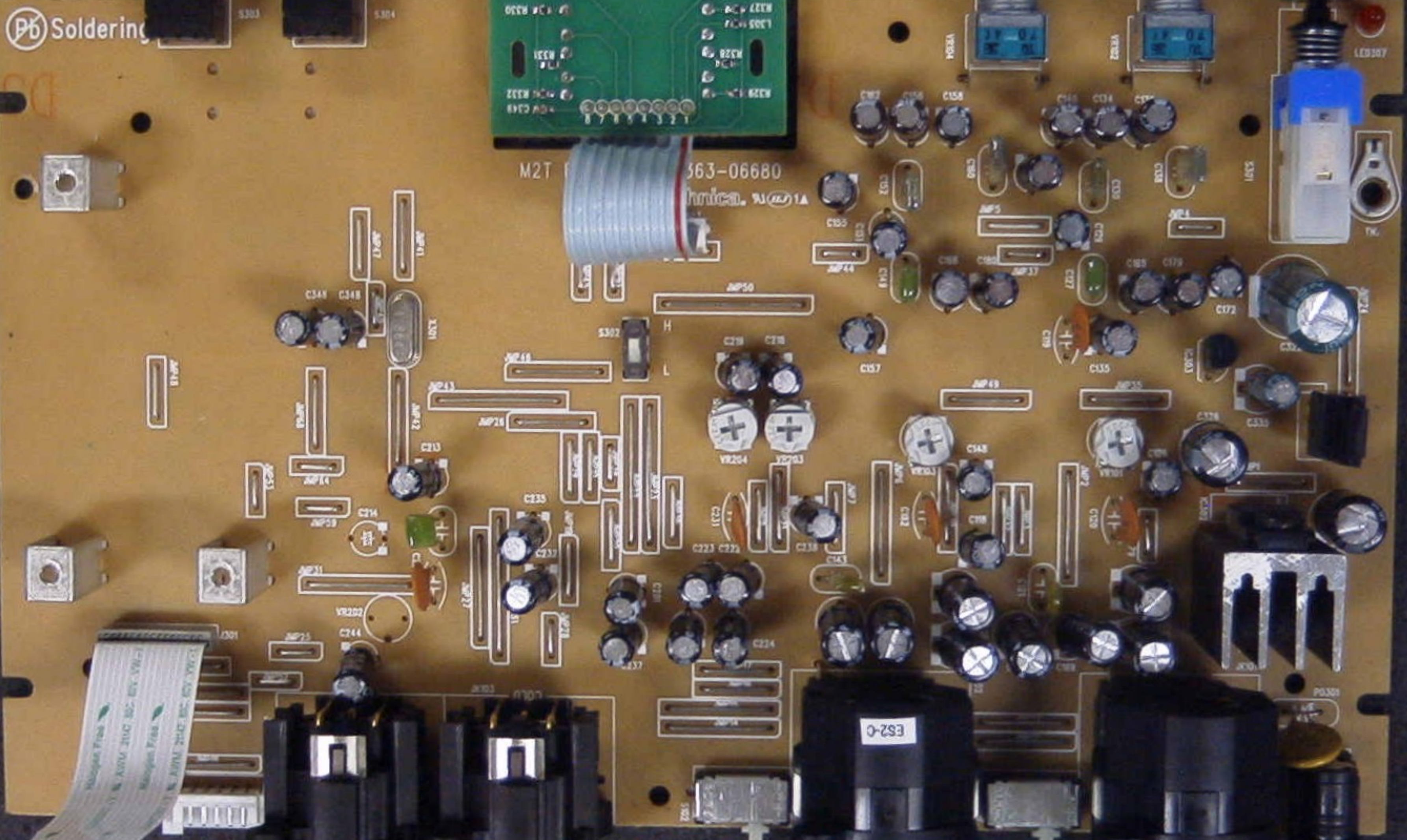
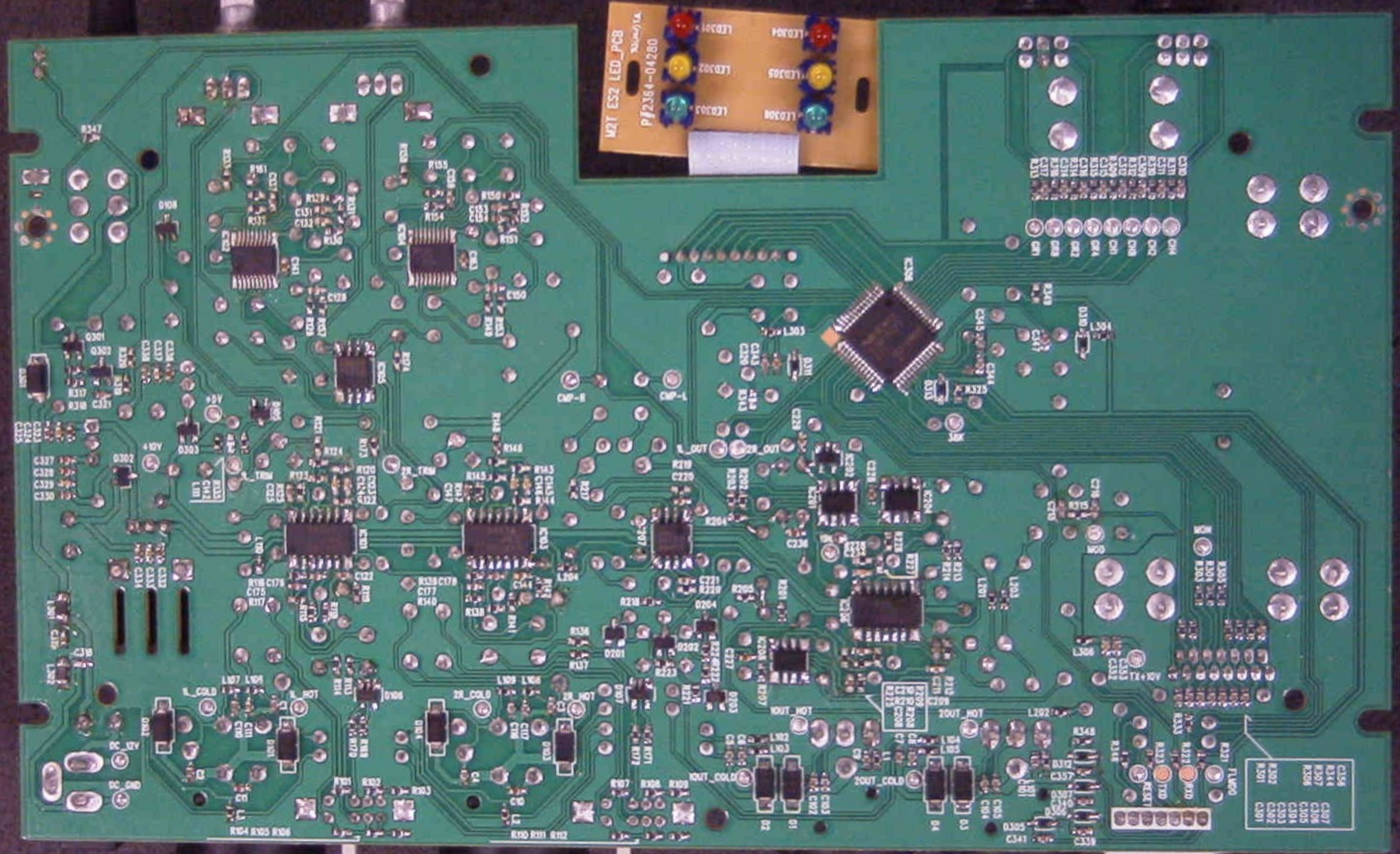


P6 Soldering







M2T ES2 LED\_PCB  
P12384-04280

C370  
C371  
C372  
C373  
C374  
C375  
C376  
C377  
C378  
C379  
C380  
C381  
C382  
C383  
C384  
C385  
C386  
C387  
C388  
C389  
C390  
C391  
C392  
C393  
C394  
C395  
C396  
C397  
C398  
C399  
C400  
C401  
C402  
C403  
C404  
C405  
C406  
C407  
C408  
C409  
C410  
C411  
C412  
C413  
C414  
C415  
C416  
C417  
C418  
C419  
C420  
C421  
C422  
C423  
C424  
C425  
C426  
C427  
C428  
C429  
C430  
C431  
C432  
C433  
C434  
C435  
C436  
C437  
C438  
C439  
C440  
C441  
C442  
C443  
C444  
C445  
C446  
C447  
C448  
C449  
C450  
C451  
C452  
C453  
C454  
C455  
C456  
C457  
C458  
C459  
C460  
C461  
C462  
C463  
C464  
C465  
C466  
C467  
C468  
C469  
C470  
C471  
C472  
C473  
C474  
C475  
C476  
C477  
C478  
C479  
C480  
C481  
C482  
C483  
C484  
C485  
C486  
C487  
C488  
C489  
C490  
C491  
C492  
C493  
C494  
C495  
C496  
C497  
C498  
C499  
C500

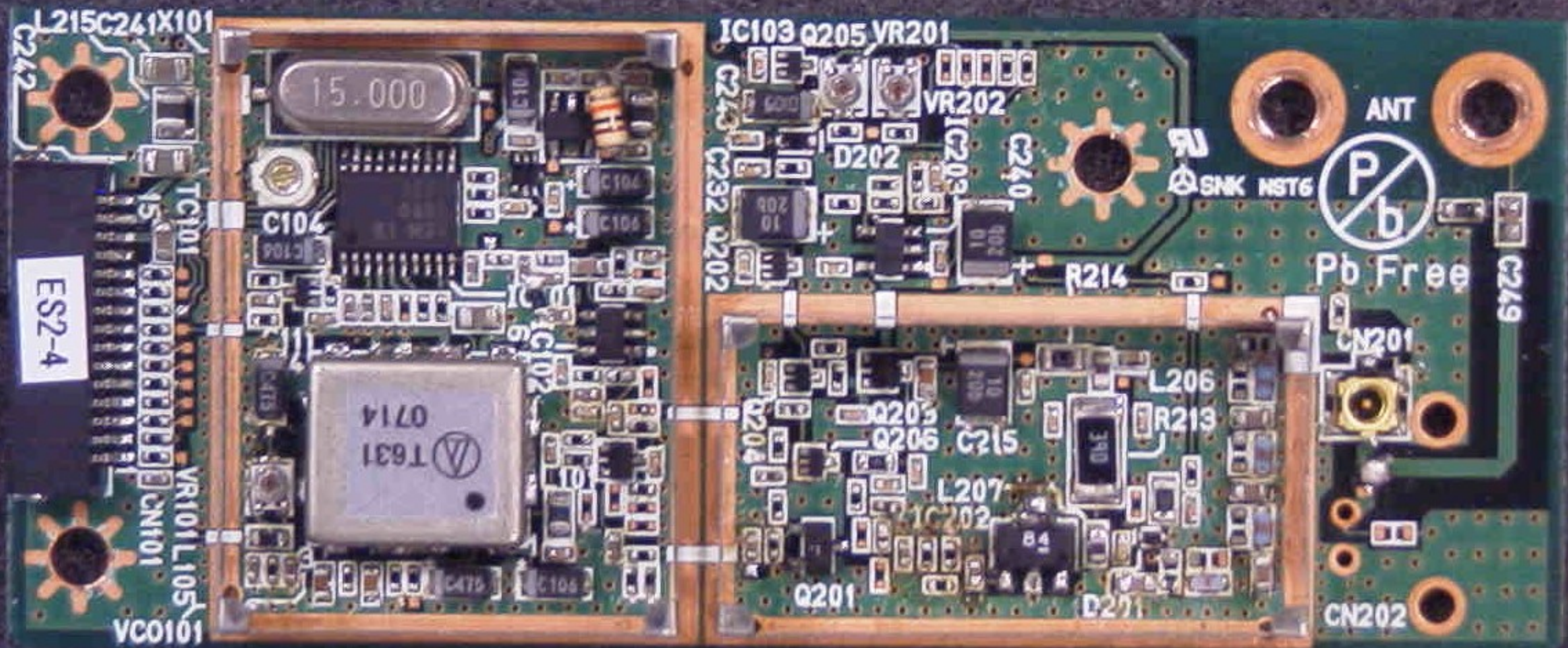
C159  
R344  
R397  
R398  
R399  
R400  
R401  
R402  
R403  
R404  
R405  
R406  
R407  
R408  
R409  
R410  
R411  
R412  
R413  
R414  
R415  
R416  
R417  
R418  
R419  
R420  
R421  
R422  
R423  
R424  
R425  
R426  
R427  
R428  
R429  
R430  
R431  
R432  
R433  
R434  
R435  
R436  
R437  
R438  
R439  
R440  
R441  
R442  
R443  
R444  
R445  
R446  
R447  
R448  
R449  
R450  
R451  
R452  
R453  
R454  
R455  
R456  
R457  
R458  
R459  
R460  
R461  
R462  
R463  
R464  
R465  
R466  
R467  
R468  
R469  
R470  
R471  
R472  
R473  
R474  
R475  
R476  
R477  
R478  
R479  
R480  
R481  
R482  
R483  
R484  
R485  
R486  
R487  
R488  
R489  
R490  
R491  
R492  
R493  
R494  
R495  
R496  
R497  
R498  
R499  
R500

R104 R105 R106

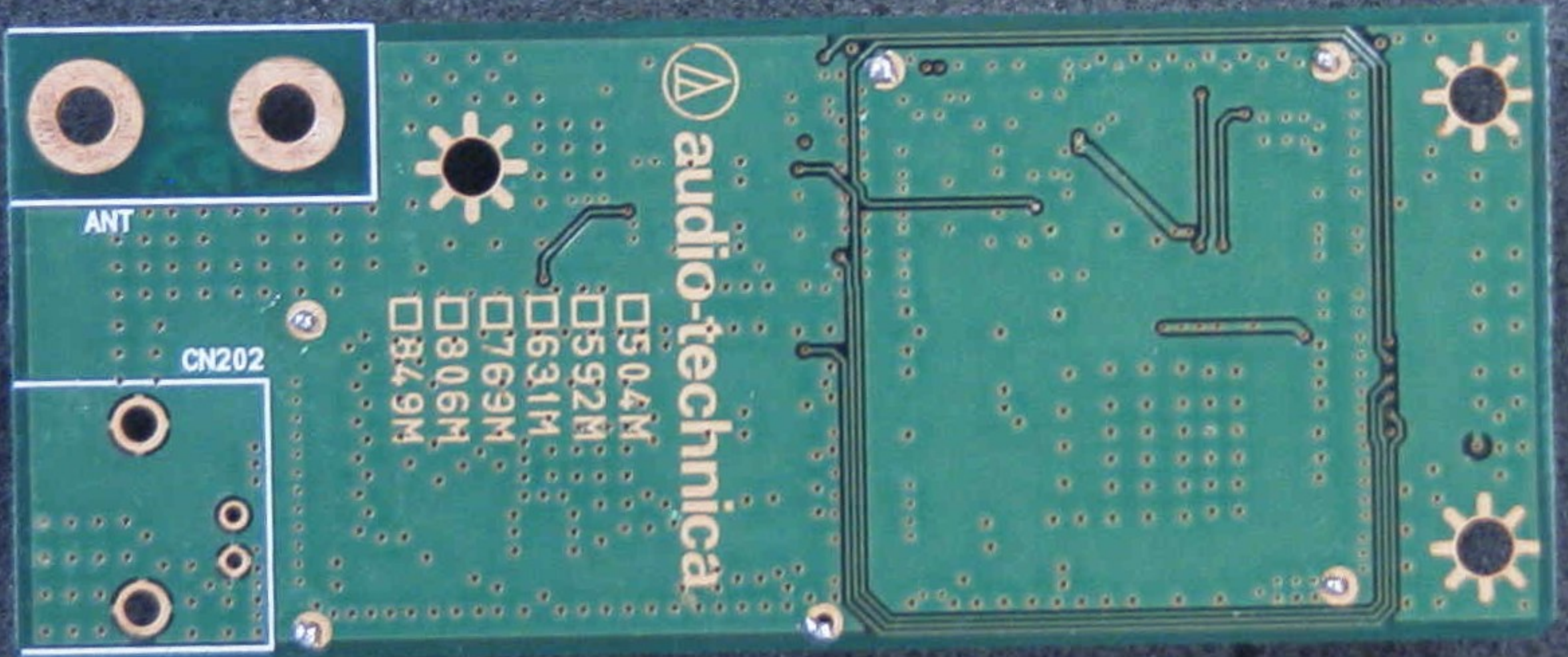
R110 R111 R112

C113 C114 C115 C116 C117 C118 C119 C120 C121 C122 C123 C124 C125 C126 C127 C128 C129 C130 C131 C132 C133 C134 C135 C136 C137 C138 C139 C140 C141 C142 C143 C144 C145 C146 C147 C148 C149 C150 C151 C152 C153 C154 C155 C156 C157 C158 C159 C160 C161 C162 C163 C164 C165 C166 C167 C168 C169 C170 C171 C172 C173 C174 C175 C176 C177 C178 C179 C180 C181 C182 C183 C184 C185 C186 C187 C188 C189 C190 C191 C192 C193 C194 C195 C196 C197 C198 C199 C200









audio-technical

- 0.4M
- 0.592M
- 0.631M
- 0.769M
- 0.806M
- 0.849M

ANT

CN202