



ATH-G1WL

Quick Start Guide / Wireless Gaming Headset



Audio-Technica Corporation

2-46-1 Nishi-naruse, Machida, Tokyo 194-8666, Japan
www.audio-technica.com

©2019 Audio-Technica Corporation
Global Support Contact: www.at-globalsupport.com

Thank you for purchasing this product. Before using the product, read through the user manual to ensure that you will use the product correctly. Please keep this manual for future reference.

■ Safety precautions

Although this product was designed to be used safely, failing to use it correctly may result in an accident. To ensure safety, observe all warnings and cautions while using the product.

Cautions for the product

- Do not use the product near medical equipment. Radio waves may affect cardiac pacemakers and medical electronic equipment. Do not use the product inside medical facilities.
- When using the product in aircraft, follow airline instructions.
- Do not use the product near automatic control devices such as automatic doors and fire alarms. Radio waves may affect electronic equipment and cause accidents due to malfunction.
- Do not disassemble, modify or attempt to repair the product to avoid electric shock, malfunction or fire.
- Do not subject the product to strong impact to avoid electric shock, malfunction or fire.
- Do not handle the product with wet hands to avoid electric shock or injury.
- Disconnect the product from a device if the product begins to malfunction, producing smoke, odor, heat, unwanted noise or showing other signs of damage. In such a case, contact your local Audio-Technica dealer.

- Do not allow the product to get wet to avoid electric shock or malfunction.
- Do not put foreign matter such as combustible materials, metal, or liquid in the product.
- Do not cover the product with a cloth to avoid fire or injury by overheating.
- Follow applicable laws regarding mobile phone and headphone use if using headphones while driving.
- Do not use the product in places where the inability to hear ambient sound presents a serious risk (such as at railroad crossings, train stations, and construction sites).
- When charging, make sure to use the included USB charging cable.
- Do not charge with devices that have quick-charge functionality (with a voltage of 5 V or more). Doing so may cause the product to malfunction.
- To prevent damage to your hearing, do not raise the volume too high. Listening to loud sound for an extended period may cause temporary or permanent hearing loss.
- Discontinue use if skin irritation results from direct contact with the product.
- Do not catch your fingers or other body parts between the housing and the arm or inside the joints.

Cautions for rechargeable battery

The product is equipped with a rechargeable battery (lithium polymer battery).

- If battery fluid gets into eyes, do not rub them. Rinse thoroughly with clean water such as tap water and consult a doctor immediately.
- If battery fluid leaks, do not touch fluid with bare hands. If fluid remains inside the product, it may cause malfunction. If battery fluid leaks, contact your local Audio-Technica dealer.
 - If fluid gets in your mouth, gargle thoroughly with clean water such as tap water and consult a doctor immediately.
 - If your skin or clothing comes in contact with fluid, immediately wash the affected skin or clothing with water. If you experience skin irritation, consult a doctor.
- To avoid leakage, generation of heat or explosion:
 - Never heat, disassemble or modify the battery, nor dispose of it in a fire.
 - Do not attempt to pierce with a nail, hit with a hammer or step on the battery.
 - Do not drop the product or subject it to strong impact.
 - Do not get the battery wet.
- Do not use, leave or store the battery in the following places:
 - Area exposed to direct sunlight or high temperatures and humidity
 - Inside of a car under the blazing sun
 - Near heat sources such as heat registers
- Charge only with the included USB cable to avoid malfunction or fire.
- The internal rechargeable battery of this product cannot be replaced by the user. The battery may have reached the end of its service life if the usage time becomes significantly shorter even after the battery has been fully charged. If this is the case, the battery needs to be repaired. Contact your local Audio-Technica dealer for repair details.
- When the product is disposed of, the built-in rechargeable battery needs to be discarded properly. Contact your local Audio-Technica dealer to learn how to properly dispose of the battery.

For customers in the USA

FCC Notice

This device complies with Part 15 of the FCC Rules. Operation is subject to the following two conditions: (1) This device may not cause harmful interference, and (2) this device must accept any interference received, including interference that may cause undesired operation.

Warning

You are cautioned that any changes or modifications not expressly approved in this manual could void your authority to operate this equipment.

Note: This equipment has been tested and found to comply with the limits for a Class B digital device, pursuant to part 15 of the FCC Rules. These limits are designed to provide reasonable protection against harmful interference in a residential installation. This equipment generates, uses and can radiate radio frequency energy and, if not installed and used in accordance with the instructions, may cause harmful interference to radio communications. However, there is no guarantee that interference will not occur in a particular installation. If this equipment does cause harmful interference to radio or television reception, which can be determined by turning the equipment off and on, the user is encouraged to try to correct the interference by one or more of the following measures:

- Reorient or relocate the receiving antenna.
- Increase the separation between the equipment and receiver.
- Connect the equipment to an outlet on a circuit different from that to which the receiver is connected.
- Consult the dealer or an experienced radio/TV technician for help.

RF Exposure Statement

This transmitter must not be co-located or operated in conjunction with any other antenna or transmitter used in other systems. This device complies with FCC radiation exposure limits set forth for an uncontrolled environment and meets the FCC radio frequency (RF) Exposure Guidelines. This equipment has very low levels of RF energy that is deemed to comply without testing of specific absorption rate (SAR).

For customers in Canada

IC statement

CAN ICES-3 (B)/NMB-3(B)
This device complies with Industry Canada's licence-exempt RSSs. Operation is subject to the following two conditions: (1) This device may not cause interference; and (2) This device must accept any interference, including interference that may cause undesired operation of the device.

Under Industry Canada regulations, this radio transmitter may only operate using an antenna of a type and maximum (or lesser) gain approved for the transmitter by Industry Canada. To reduce potential radio interference to other users, the antenna type and its gain should be so chosen that the equivalent isotropically radiated power (e.i.r.p.) is not more than that necessary for successful communication.

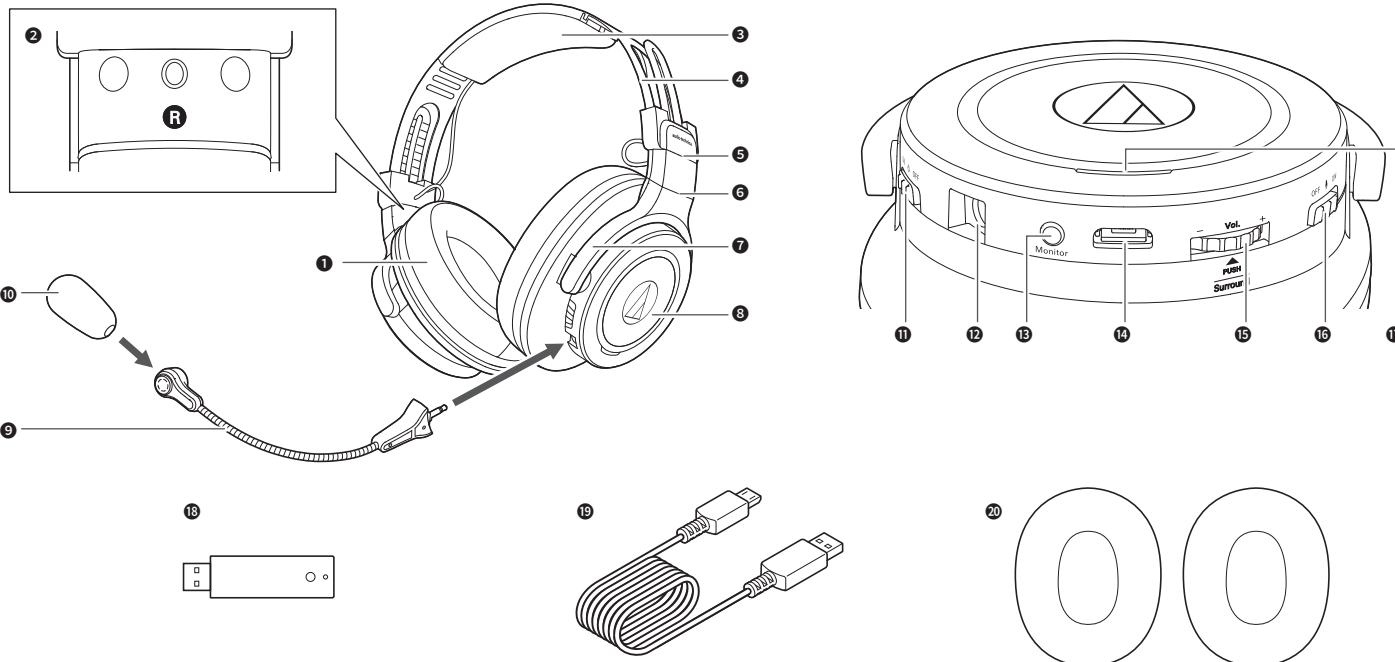
This device complies with RSS-102 radiation exposure limits set forth for an uncontrolled environment. The equipment complies with RF radiation exposure limits set forth for an uncontrolled environment.

This device and its antenna must not be co-located or operation in conjunction with any other antenna or transmitter.

■ Notes on use

- Be sure to read the connected device's user manual before use.
- Audio-Technica will not be liable in any way for any loss of data in the unlikely event that such losses should occur while using the product.
- On public transportation or in other public places, keep the volume low so as not to disturb other people.
- Minimize the volume on your device before connecting the product.
- When using the product in a dry environment, you may feel a tingling sensation in your ears. This is caused by static electricity accumulated on your body, not by product malfunction.
- Do not subject the product to strong impact.
- Do not store the product in direct sunlight, near heating devices, or in hot, humid, or dusty places. Additionally, do not allow the product to get wet.
- When the product is used for a long time, the product may become discolored due to ultraviolet light (especially direct sunlight) and wear.
- Make sure to hold the plug when connecting and disconnecting the USB charging cable. The USB charging cable may become severed or an accident may occur if you pull on the cable itself.
- When you are not using the USB charging cable, disconnect it from the product.
- If the product is placed in a bag while the USB charging cable is still connected, the USB charging cable may become caught, severed, or broken.
- Do not bring a magnetic card, etc. close to the transceiver. It may cause a malfunction.
- If the transceiver is connected to the USB port on the back of your computer, the radio wave may be interrupted. In that case, connect to the USB port on the side or front of your computer.
- If you use the product near an electronic device or transmitter (such as a mobile phone) which is not connected with the product, unwanted noise may be heard. In this case, move the product away from the electronic device or transmitter.
- If you use the product near a TV or radio antenna, noise may be seen or heard in the television or radio signal. In this case, move the product away from the TV or radio antenna.
- To protect the built-in rechargeable battery, charge it at least once every 6 months. If too much time passes between charges, the life of the rechargeable battery may be reduced, or the rechargeable battery may no longer be able to be charged.

■ Part names and functions

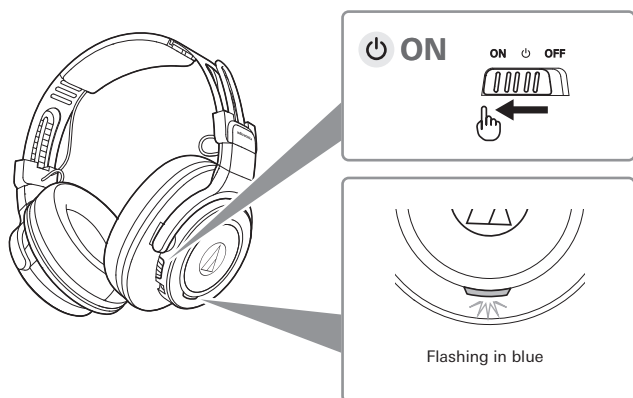


- 1 Earpad
- 2 L/R (left/right) indicator
- 3 Headpad
- 4 Headband
- 5 Slider
- 6 Joint
- 7 Arm
- 8 Housing
- 9 Detachable microphone
- 10 Windscreen

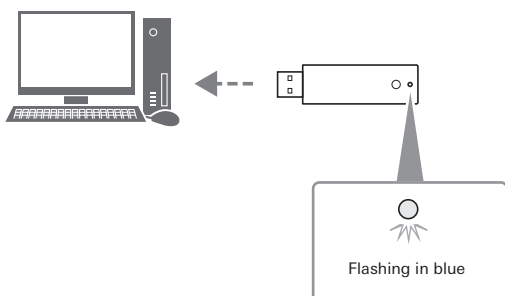
- 11 Power switch
- 12 Connector jack for detachable microphone
- 13 Microphone monitor button
- 14 Battery jack
- 15 Volume/surround sound selector switch
- 16 Mute switch
- 17 Multi-indicator lamp
- 18 Transceiver (USB Type-A)
- 19 USB charging cable (2.0 m (6.6'))
- 20 Replacement earpads

■ Pairing

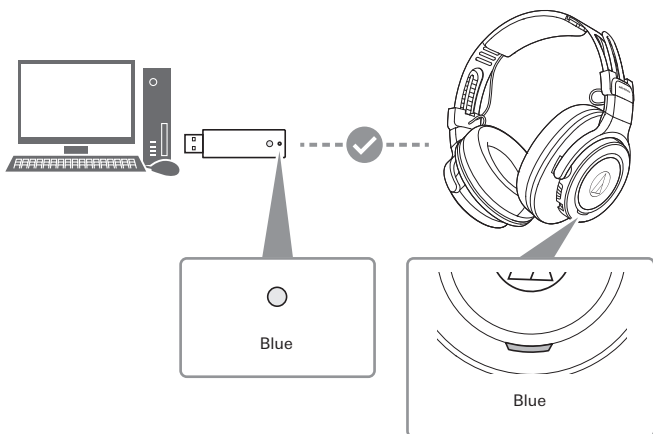
- Starting with the product turned off, slide the power switch to the "ON" position.



- Insert the transceiver to your PC.



- After pairing is complete, the indicator lamp of the headphones and transceiver light in blue.



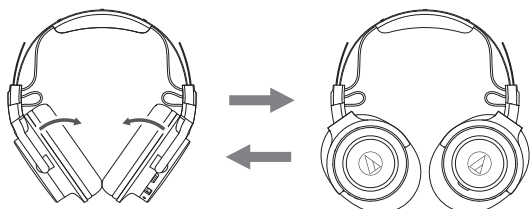
■ Wearing the product

Place the side of the product marked "L" (LEFT) over the left ear and the side marked "R" (RIGHT) over the right ear, slide the slider up or down so that the earpads cover your ears, and then adjust the headband.



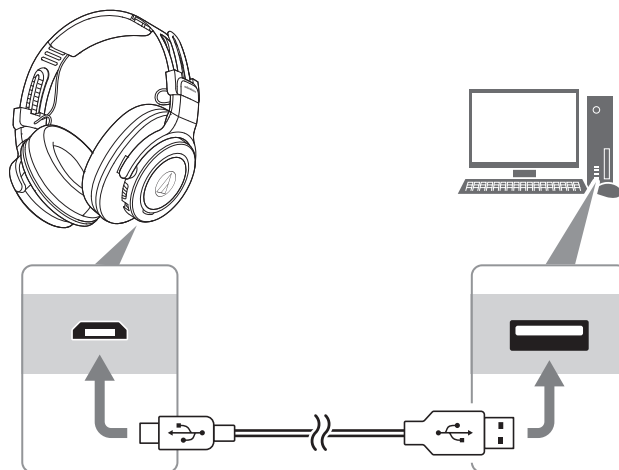
■ Swivel mechanism

You can fold the housing so that it lies flat.

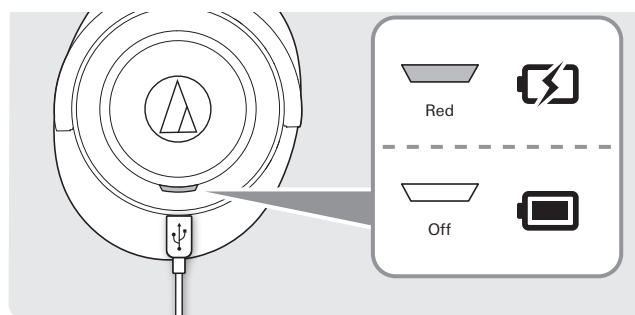


■ Charging

- Fully charge the battery when using for the first time.
- When the rechargeable battery is running low, the product will make a sound through the headphones, and the multi-indicator lamp will flash in red. In this case, charge the battery.



While charging, the multi-indicator lamp lights as follows (it may take several seconds for the multi-indicator lamp to light).



■ Specifications

• Headphones

Type	Closed-back dynamic
Driver	45 mm
Sensitivity	101 dB/mW
Frequency response	5 to 40,000 Hz
Impedance	45 ohms
Power supply	DC 3.8 V lithium polymer battery
Weight	290 g (without mic)

• Microphone

Type	Electret condenser
Polar pattern	Unidirectional
Sensitivity	-43 dB (1V/Pa, at 1kHz)
Frequency response	30 to 20,000 Hz

• Transceiver

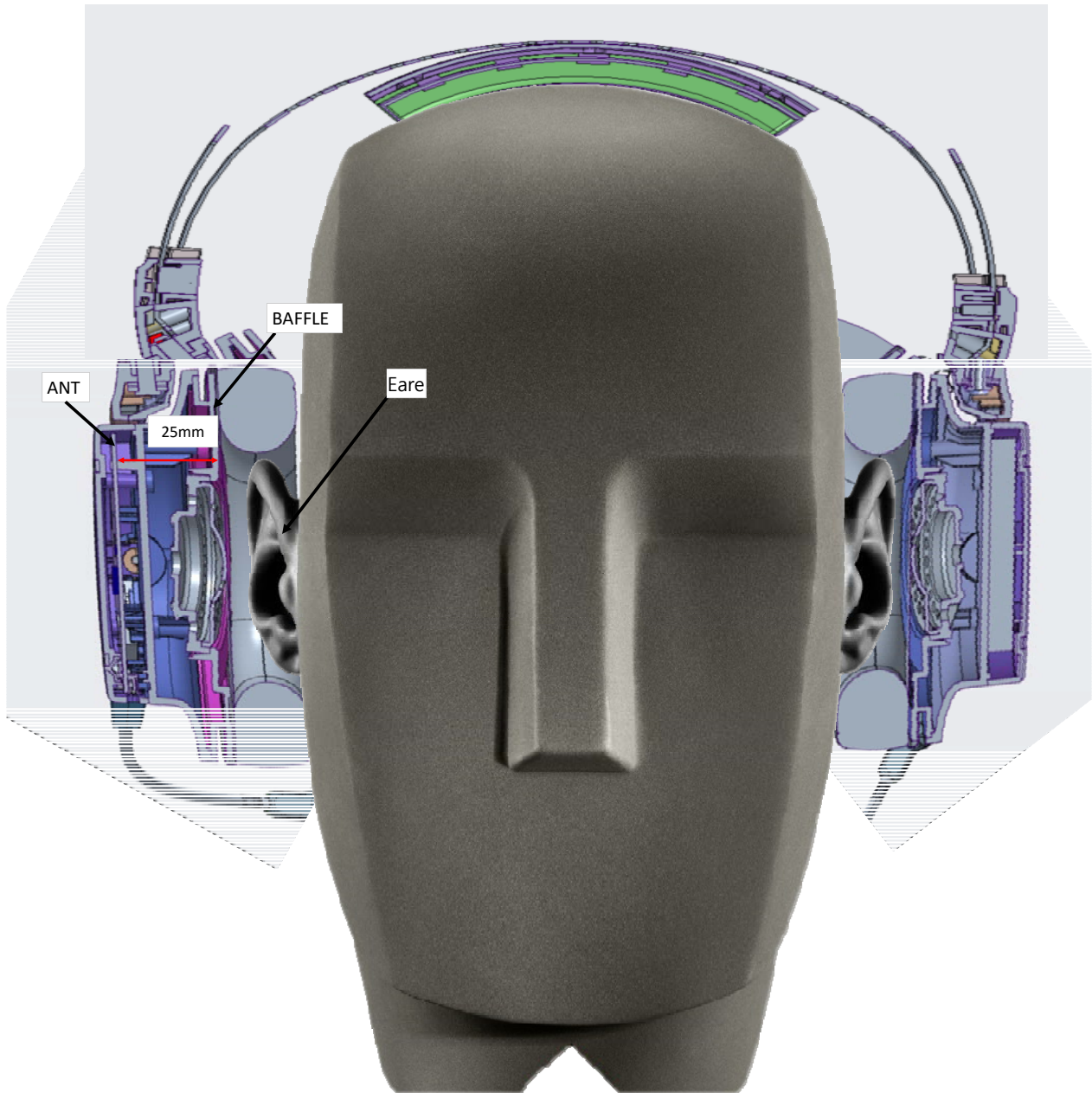
RF output	12.5 mW EIRP
Maximum communication range	Line of sight - approx. 12 m
Frequency band	2.404 GHz to 2.476 GHz
Modulation method	AFH
Transmission band	20 to 24 kHz (24,000 Hz)
Power supply	DC 5 V (USB BUS POWER)
Dimensions	50×15×10mm
Weight	9 g

• Other

Charging time	Approx. 7 hours*
Operating time	Continuous transmission time: Max. approx. 15 hours
Operating temperature	5°C to 40°C (41°F to 104°F)
Accessories	USB charging cable (2 m), Windscreen, Spare Earpad, Detachable Microphone

* The figures above depend on operating conditions.

For product improvement, the product is subject to modification without notice.



nonc FCC sur l' exposition aux radiations RF :

Cet quipement est conforme aux r glementations FCC d' exposition aux radiations d finies pour un environnement non contr l . Les utilisateurs suivront les instructions d' exploitation sp cifiques pour r pondre aux exigences de conformit sur l' exposition aux RF. L' antenne utilis e pour cet appareil ne doit pas fonctionner en m me temps qu' une autre antenne ou metteur, sauf s'il y a conformit avec les proc dures FCC des produits multi- metteurs.

Nous, AUDIO-TECHNICA CORPORATION confirmer que lorsqu'il est quip , la distance entre l'antenne et la t te est de 25 mm.

This equipment complies with FCC RF radiation exposure limits set forth for an uncontrolled environment.

ATH-G1WL-USB is equipment should be installed and operated with a minimum distance of 25 mm between the radiator and your body. This transmitter must not be co-located or operating in conjunction with any other antenna or transmitter.