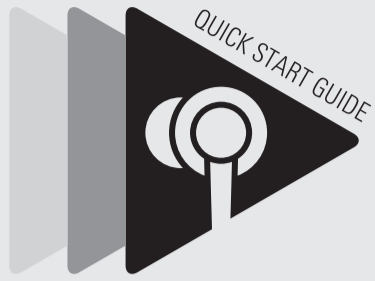




audio-technica

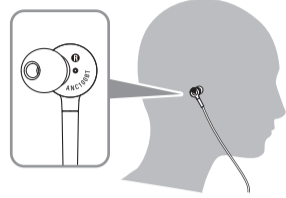


ATH-ANC100BT

Check

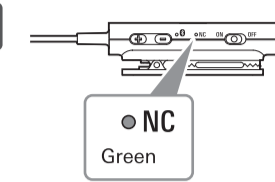
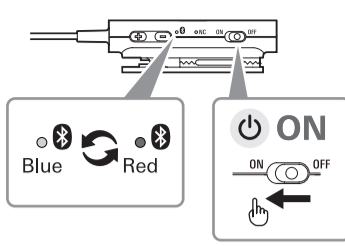


- Headphones
- Eartips (S, M, L)
- COMPLY™ Foam eartips (M)
- Cable (0.6 m (2.0'))
- USB charging cable
- Pouch
- Quick start guide (this leaflet)
- Caution guide



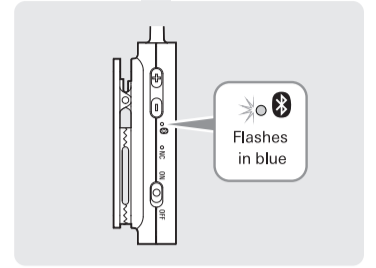
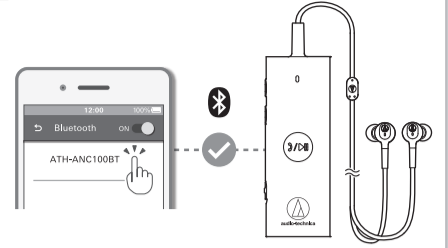
Pairing / Noise-Cancelling

1

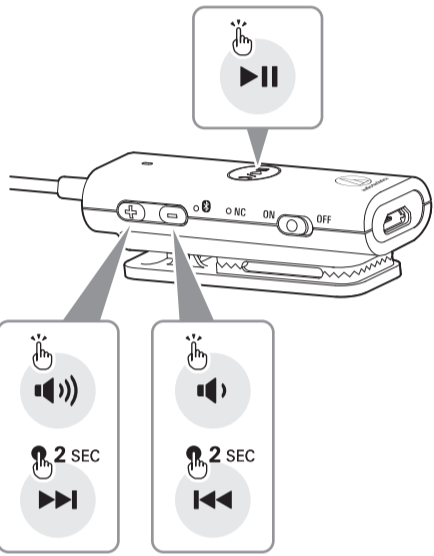


When the power is turned on, the built-in microphone automatically detects the ambient sound and issues a cancelling signal to effectively reduce the noise.

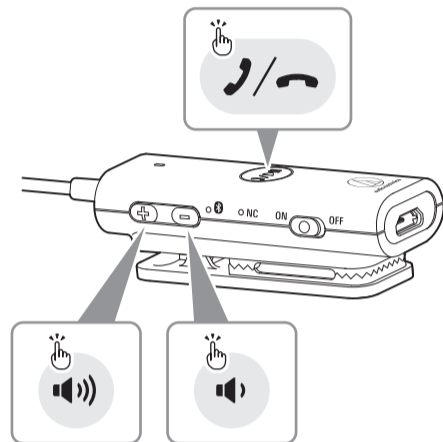
2



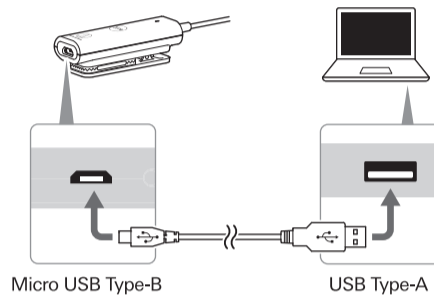
Music



Phone

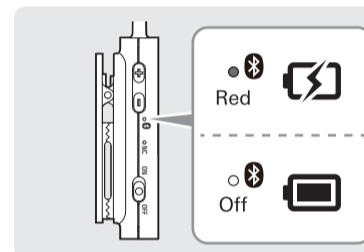


Charge



Micro USB Type-B

USB Type-A



Red

Off

Help

For more information on how to use this product, visit the Audio-Technica website at the URL listed below and contained in the QR code.



www.audio-technica.com

The Bluetooth® word mark and logos are owned by Bluetooth SIG, Inc. and any use of such marks by Audio-Technica Corporation is under license. All other trademarks are property of their respective owners.

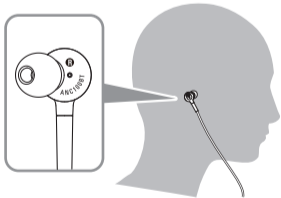
Audio-Technica Corporation
2-46-1 Nishi-naruse, Machida, Tokyo 194-8666, Japan
www.audio-technica.co.jp
©2018 Audio-Technica Corporation 132314020-01-01 ver.1 2018.10.01

Français / Deutsch / Italiano

Contrôle / Kontrolle / Controllo

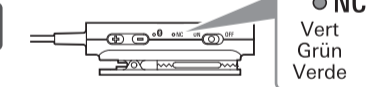
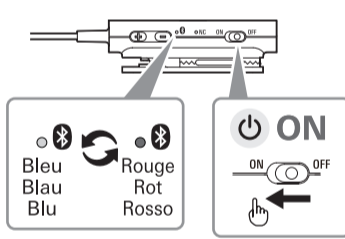


- Écouteurs / Kopfhörer / Cuffie
- Embout (S, M, L) / Kopfhöreraufsätze (S, M, L) / Copriauricolari (S, M, L)
- Embouts (M) en mousse COMPLY™ / COMPLY™ Schaumauflätze (M) / Copriauricolari in schiuma COMPLY™ (M)
- Câble (0,6 m) / Kabel (0,6 m) / Cavo (0,6 m)
- Câble de recharge USB / USB-Ladekabel / Cavo per la carica USB
- Pochette de protection / Tasche / Sacca
- Guide de prise en main (ce dépliant) / Kurzanleitung (dieser Handzettel) / Guida rapida (questo opuscolo)
- Guide de mise en garde / Sicherheitsanweisungen / Guida precauzionale



Appairage/Annulation du bruit / Paarung/Rauschunterdrückung / Associazione/Cancell. rumore

1

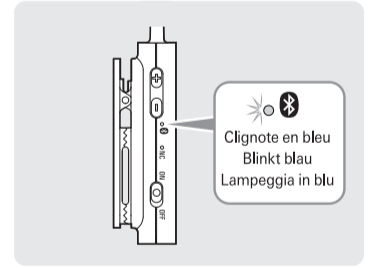
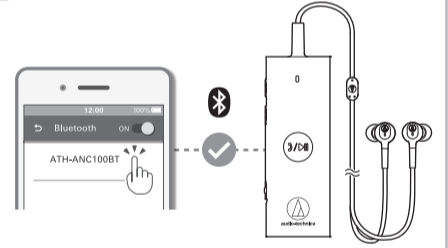


Lorsque l'appareil est sous tension, le microphone intégré détecte automatiquement le son ambiant et émet un signal d'annulation pour réduire efficacement le bruit.

Wenn das Gerät eingeschaltet ist, erkennt das eingebaute Mikrofon automatisch die Umgebungsgeräusche und erzeugt ein auslöschendes (gegenphasiges) Signal, um diese Geräusche zu verringern.

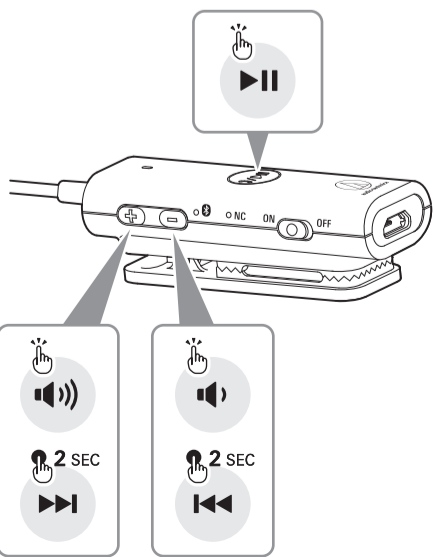
All'accensione, il microfono incorporato rileva automaticamente i rumori ambientali ed emette un segnale di cancellazione per ridurre efficacemente i disturbi.

2

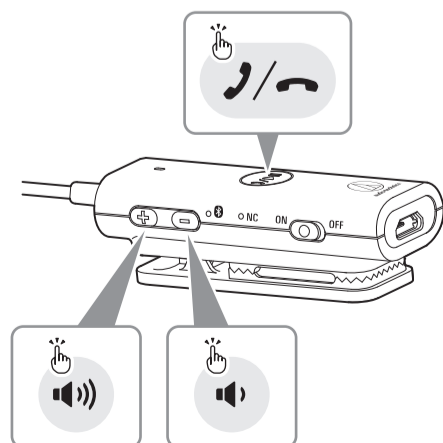


Clignote en bleu
Blinkt blau
Lampeggia in blu

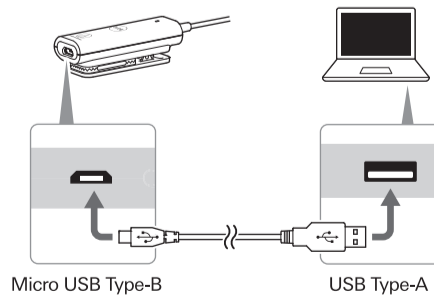
Musique / Musik / Musica



Téléphone / Handy / Telefono

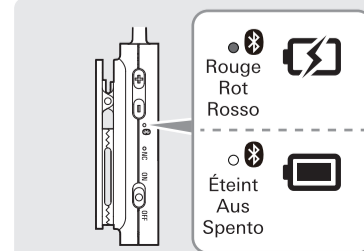


Charge / Laden / Carica



Micro USB Type-B

USB Type-A



Rouge
Rot
Rosso

Éteint
Aus
Spento

Aide / Hilfe / Guida

Pour plus d'information sur les modalités d'utilisation de ce produit, rendez-vous sur le site Web Audio-Technica à l'URL indiquée ci-après et contenue dans le QR code.

Für weitere Informationen zur Nutzung dieses Produkts besuchen Sie die Audio-Technica-Website unter der unten angeführten und der im QR-Code enthaltenen URL.

Per maggiori informazioni su come utilizzare questo prodotto, consultare il sito di Audio-Technica all' URL indicato di seguito incluso nel codice QR.



www.audio-technica.com

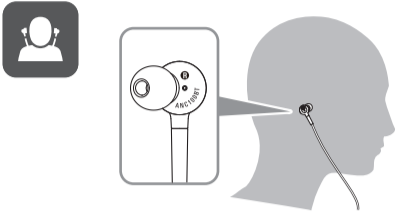
La marque verbale et les logos Bluetooth® sont détenus par Bluetooth SIG, Inc. et ces marques sont utilisées sous licence par Audio-Technica Corporation. Toutes les autres marques de commerce sont la propriété de leurs détenteurs respectifs.

Die Bluetooth®-Wortmarke und -Logos sind Eigentum von Bluetooth SIG, Inc., und die Nutzung dieser Marken durch Audio-Technica Corporation erfolgt unter Lizenz. Alle anderen Markenzeichen sind Eigentum der jeweiligen Inhaber.

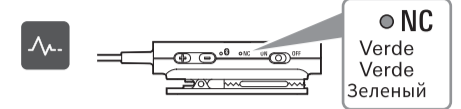
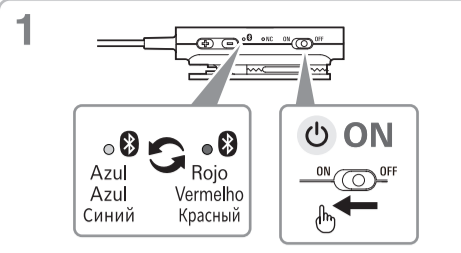
Il marchio e i loghi del termine Bluetooth® sono di proprietà di Bluetooth SIG, Inc., e qualsiasi utilizzo di tali marchi da parte di Audio-Technica Corporation è soggetto a licenza. Tutti gli altri marchi sono di proprietà dei rispettivi proprietari.

✓ Comprobar / Conteúdo da embalagem / Проверка

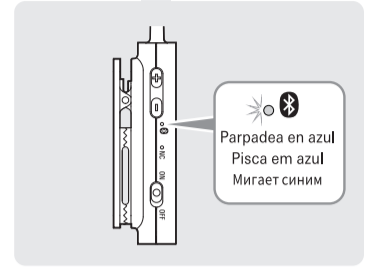
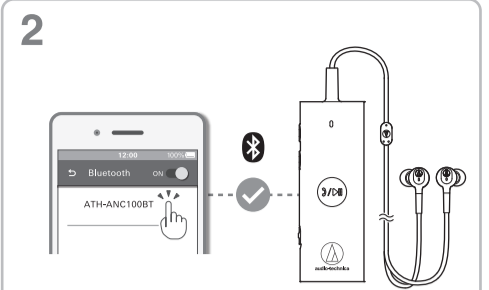
- Auriculares / Fones de ouvido / Наушники
- Puntas de audífono (S, M, L) / Ponteiras (P, M, G) / Насадки (размеры S, M, L)
- Puntas de audífono de espuma COMPLY™ (M) / Ponteiras de espuma COMPLY™ (M) / Пенные насадки COMPLY™ (размер M)
- Cable (0,6 m) / Cabo (0,6 m) / Кабель (0,6 м)
- Cable de carga USB / Cabo de carga USB / USB-кабель для зарядки
- Bolsa / Bolsa / Сумка
- Guía de inicio rápido (este folleto) / Guia rápido (este folheto) / Краткое руководство пользователя (этот листок)
- Guía de precauciones / Guia de precauções de segurança / Руководство по мерам предосторожности



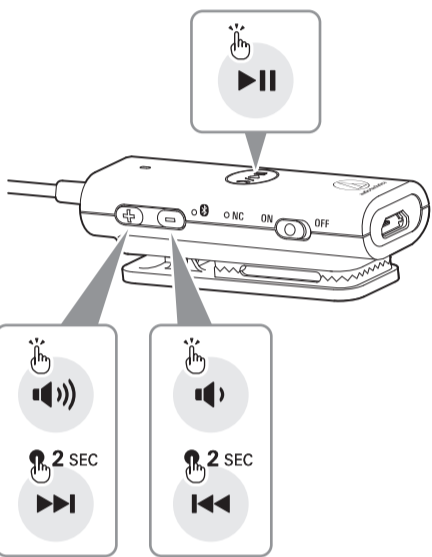
Emparejamiento/Cancelación de ruido / Emparelhamento/Cancelar ruído / Сопряжение/Шумоподавление



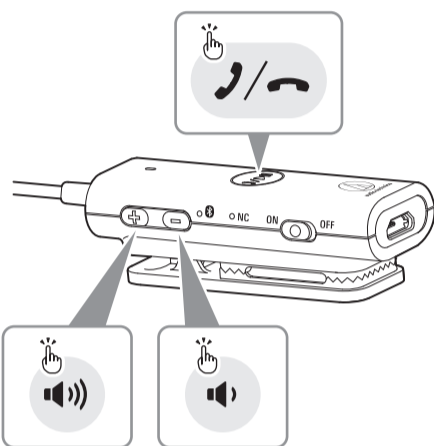
Quando se enciende el producto, el micrófono incorporado detecta automáticamente el sonido ambiente y emite una señal de cancelación que reduce el ruido de forma eficaz.
Ao ligar, o microfone integrado detecta automaticamente o som ambiente e emite um sinal de cancelamento para reduzir efetivamente o ruído.
Когда питание включено, встроенный микрофон автоматически обнаруживает окружающий звук и выдает сигнал отмены для эффективного снижения уровня шума.



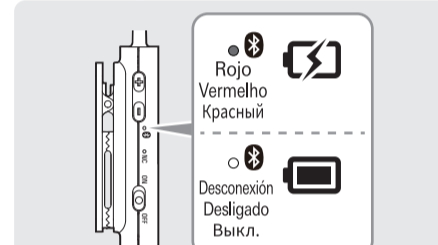
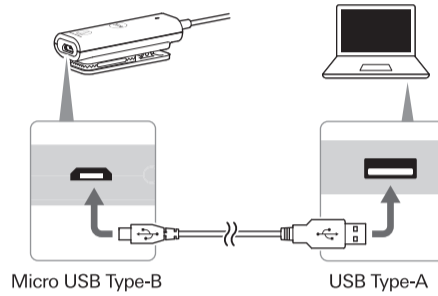
🎵 Música / Música / Музыка



📞 Teléfono / Telefone / Телефон



🔌 Carga / Carregar / Заряд



📖 Ayuda / Ajuda / Справка

Para obtener más información sobre cómo usar este producto, visite el sitio web de Audio-Technica en la URL mostrada a continuación e incluida en el código QR.

Para obter mais informações sobre como usar este produto, visite o site da Audio-Technica no endereço listado abaixo e contido no código QR.

Для получения дополнительной информации по использованию этого изделия посетите веб-сайт компании Audio-Technica по адресу, указанному ниже, а также зашифрованному в QR-коде.



www.audio-technica.com

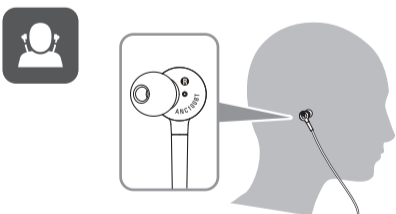
La palabra con la marca Bluetooth® y los logotipos son propiedad de Bluetooth SIG, Inc., y Audio-Technica Corporation los utiliza bajo licencia. El resto de marcas comerciales son propiedad de sus respectivos propietarios.

A marca nominativa e os logotipos Bluetooth® são de propriedade da Bluetooth SIG, Inc. e qualquer uso dessas marcas pela Audio-Technica Corporation é feito sob licença. Todas as outras marcas comerciais são de propriedade de seus respectivos proprietários.

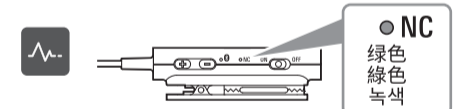
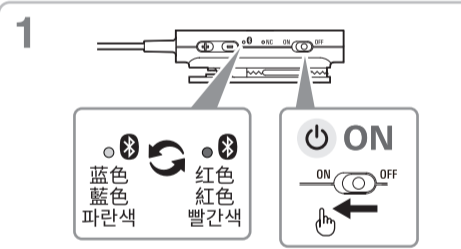
Словесный знак и логотипы Bluetooth® принадлежат Bluetooth SIG, Inc. Любое использование таких знаков компанией Audio-Technica Corporation осуществляется в соответствии с лицензией. Все остальные товарные знаки являются собственностью соответствующих владельцев.

✓ 检查 / 検査 / 확인

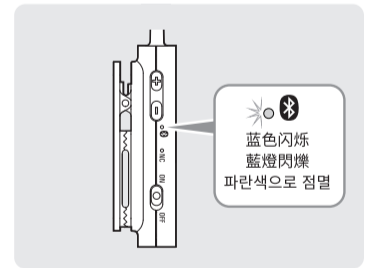
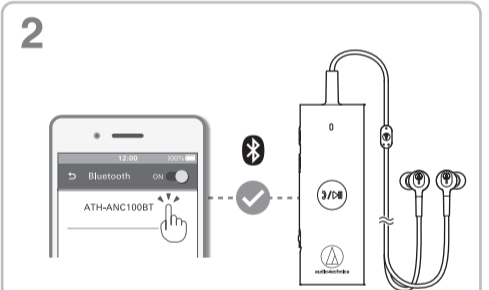
- 耳机 / 耳機 / 이어폰
- 耳塞 (S、M、L) / 耳塞 (S、M、L) / 이어팁(S, M, L)
- COMPLY™泡沫耳塞 (M) / COMPLY™泡棉耳塞 (M) / COMPLY™ Foam 이어팁(M)
- 连接线 (0.6 m) / 導線 (0.6 m) / 케이블(0.6 m)
- USB充电线 / USB充電線 / USB 충전 케이블
- 收纳袋 / 攜存袋 / 파우치
- 快速入门指南 (本说明书) / 快速入門指南 (本手冊) / 빠른 시작 가이드(본 소책자)
- 注意事项指南 / 注意事項 / 주의사항 안내



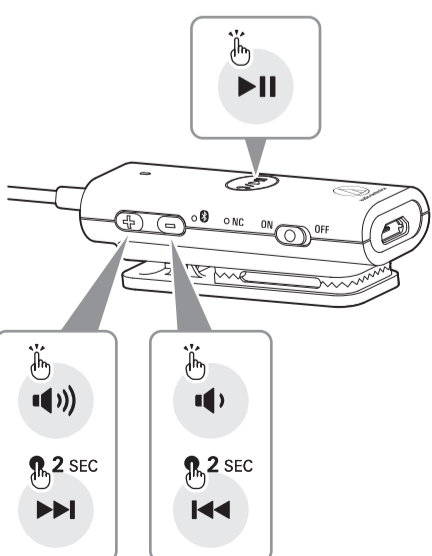
📞 配对 / 降噪 / 配對 / 抗噪 / 페어링/노이즈 캔슬링



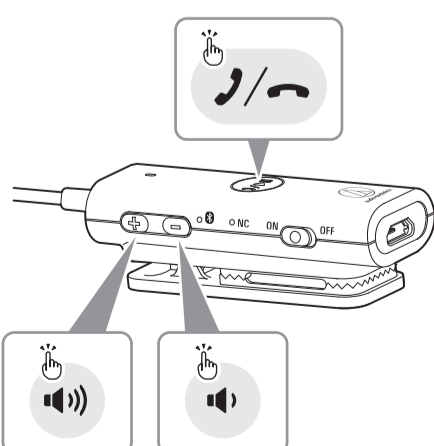
当打开电源后，内置收音头可自动检测环境声音并发出抑噪信号，有效降低噪音。
當電源開啟後，內建麥克風可自動偵測環境聲音並發出抗噪訊號，有效降低環境噪訊。
전원이 켜지면 내장 마이크가 자동으로 주변 소리를 감지해서 노이즈를 효과적으로 줄이기 위한 취소 신호를 발생시킵니다.



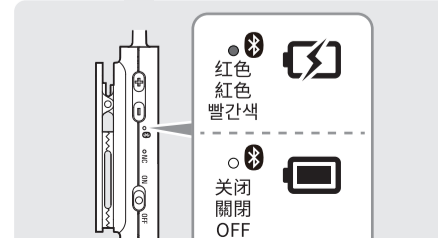
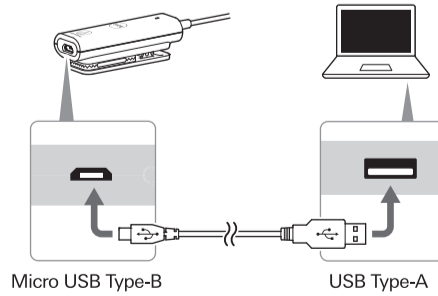
🎵 音乐 / 音樂 / 음악



📞 电话 / 電話 / 전화



🔌 充电 / 充電 / 충전



📖 帮助 / 說明 / 도움말

更多关于如何使用本产品的信息，请通过下列网址或扫描二维码访问“鐵三角”网站。

欲獲得本產品的詳細使用方法，請掃描下方 QR code 或直接透過網址連接至「鐵三角」網站。

본 제품의 사용법에 관한 자세한 사항은 아래의 URL과 QR 코드에 있는 Audio-Technica 웹사이트에서 확인할 수 있습니다.



www.audio-technica.com

藍牙® 文字商標和徽標歸藍牙技術聯盟 (Bluetooth SIG, Inc.) 所有，“鐵三角”公司已獲得其使用授權。所有其他商標均為其各自所有者的財產。

藍牙® 文字標記和標記歸 Bluetooth SIG, Inc. 所有，“鐵三角”公司已取得該標記之使用許可。所有其他商標均為其各自所有者的財產。

Bluetooth® 단어 마크 및 로고는 Bluetooth SIG, Inc.의 소유이며 Audio-Technica Corporation은 이러한 마크에 대한 사용 허가를 받았습니다. 기타 모든 상표는 해당 소유주의 자산입니다.

