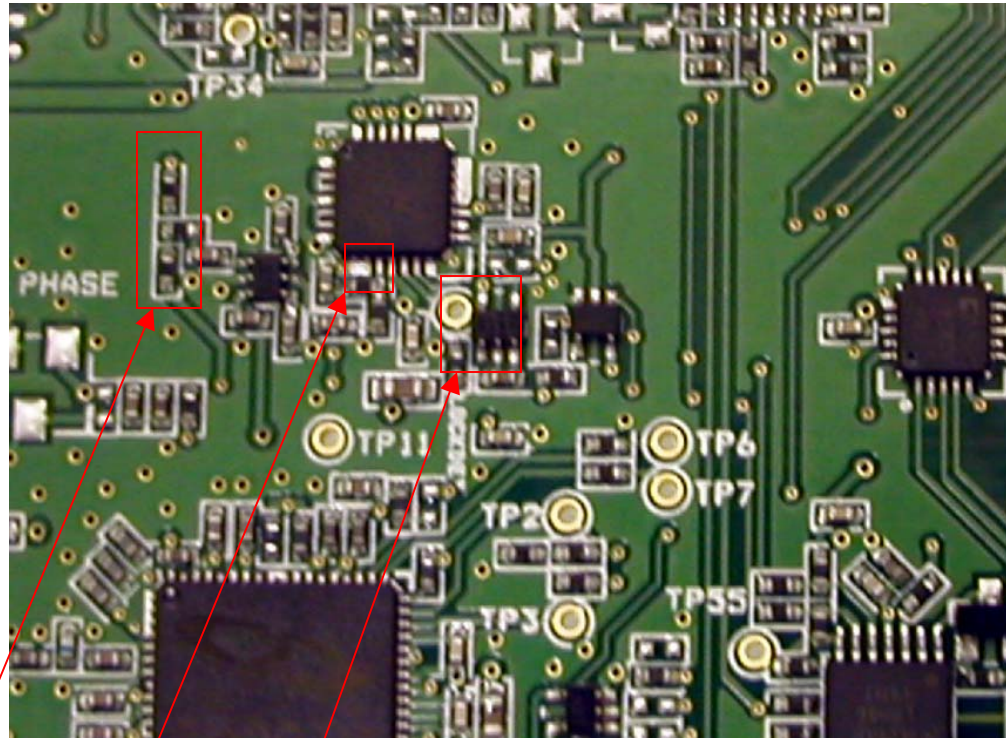


## Synthesizer Changes (zoom in)

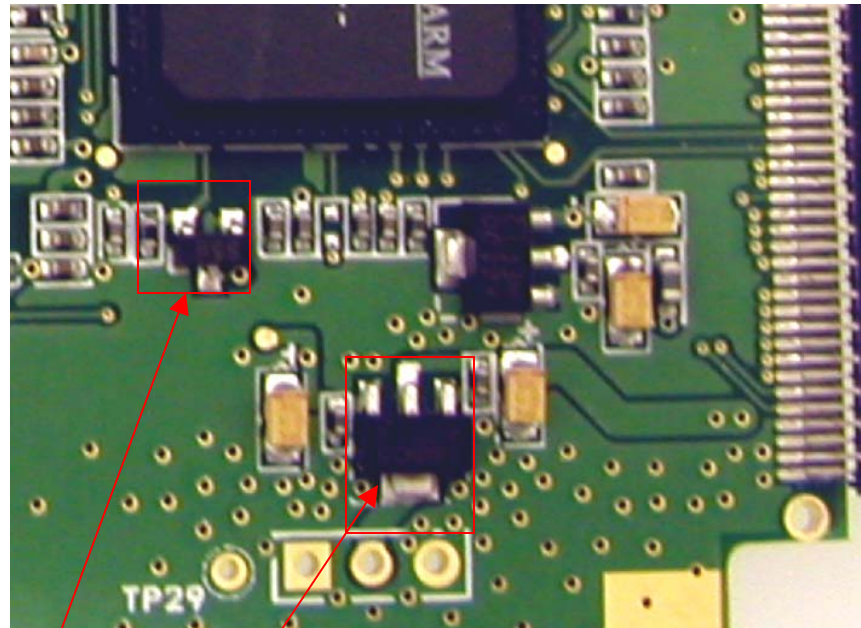


Change R6,R7,R8

Remove R61

Add R105 C233,U34

## Power Reset (zoom in)

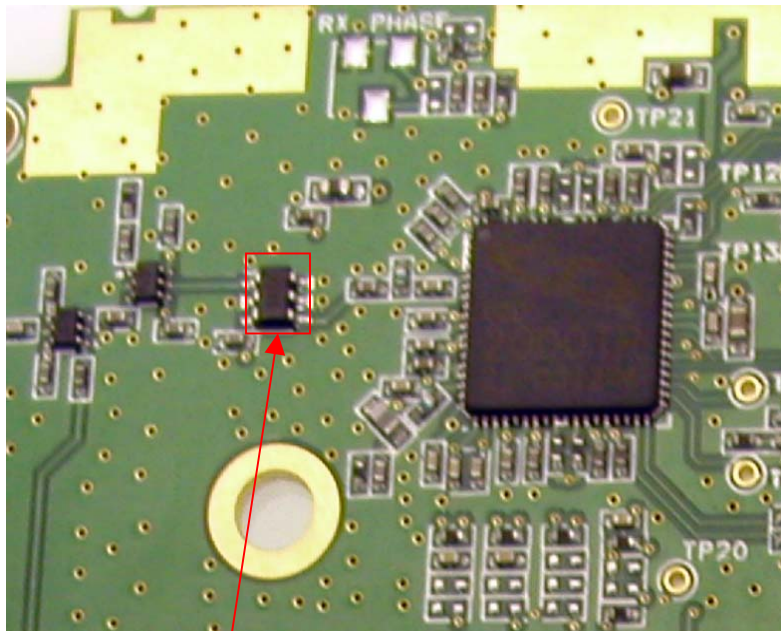


Add U23 Change R55

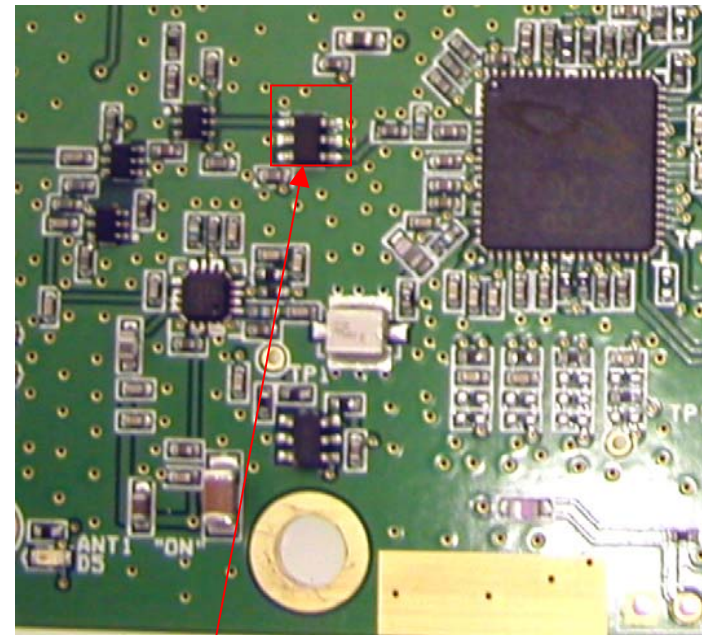
U16 Change to 3.5V Regulator



## LNA(zoom in)



Change U30 to  
Hittite LNA



Change U33 to  
Hittite LNA

# Mounting Holes

Add Mounting  
Holes (two  
places)

