

Made in Taiwan

ZydAS
ZD2001
MFB4006.2 0319
WAVEPLUS
TAIWAN

ADM1095
ADM1095
AL8825
ROHM ELECTRONICS, LTD.

SC-H48W
0322

AP1063

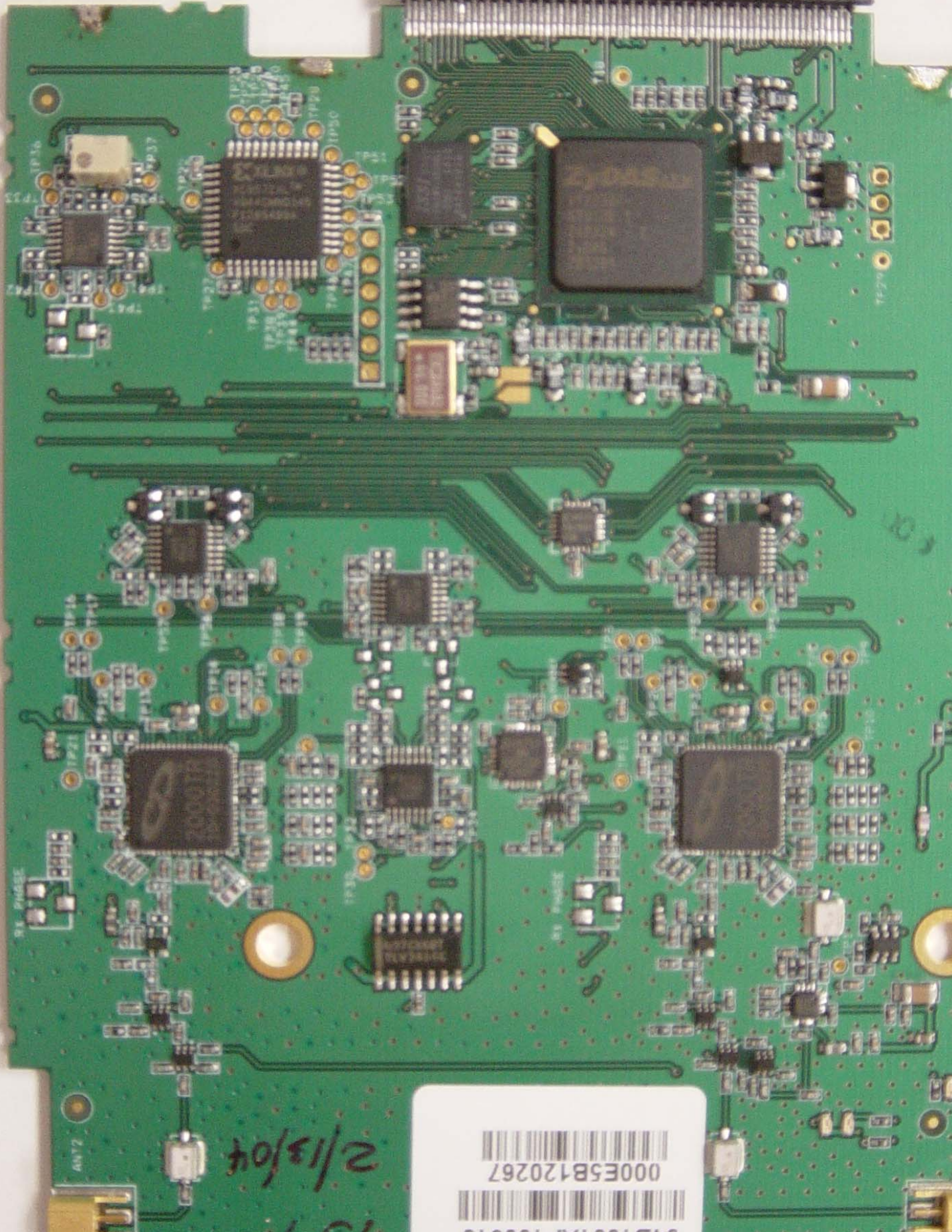
233608791 80-005-060001AA
AA

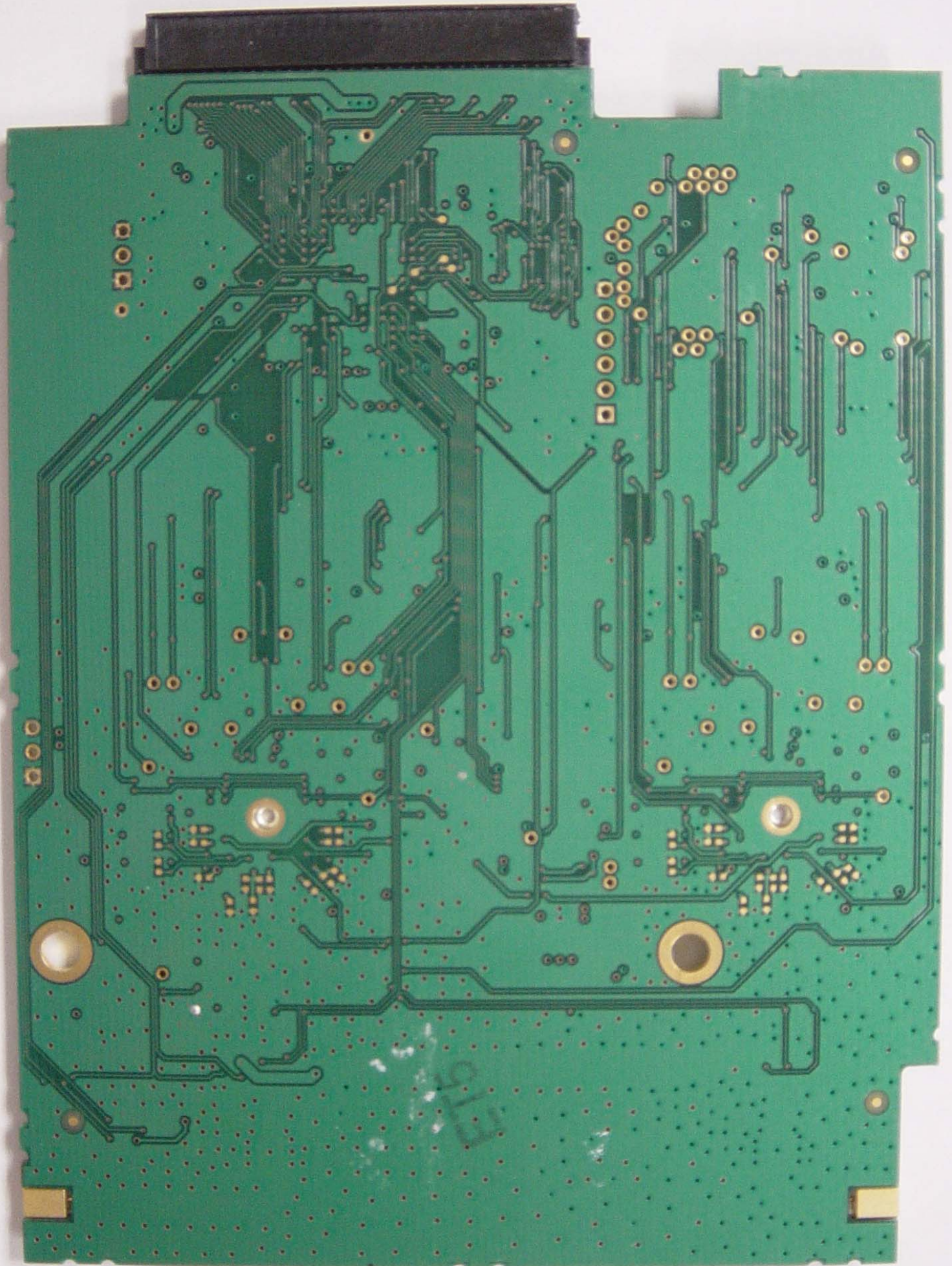
M 953-11-58SM44-231R
0339

94V0 0404

Serial #
04B1001AP100615
000E5B120267

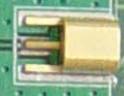
15-1
2/13/04





Serial #
04B1001AP100615
000E5B120267

15-T
2/13/04



ANT1 -ON-

ANT2

EFT, PA 5V

94V0 0404 A0AA

A M 953-11-68SM44-23TR
0339

The PCB features several key components: a large ZYDAS ARM processor (V12388, S23198, Z1034, Z40AS, ZD1201) in the lower-left; a 20001R IC (10-0500270) in the center-left; a 697C601 IC (T1V268C) in the center; and an MLNX IC (K8572X1, K884M034, F1205489A, L0C) in the lower-right. Numerous test points (TP1 through TP35) are distributed across the board. Other components include a 3000 3V regulator, a 45574 IC, and various passive components like capacitors and resistors. The board is populated with a dense network of traces and vias.

Z33608791 AA
80-006-060001AA

AP1063

0322
SQ-H48W

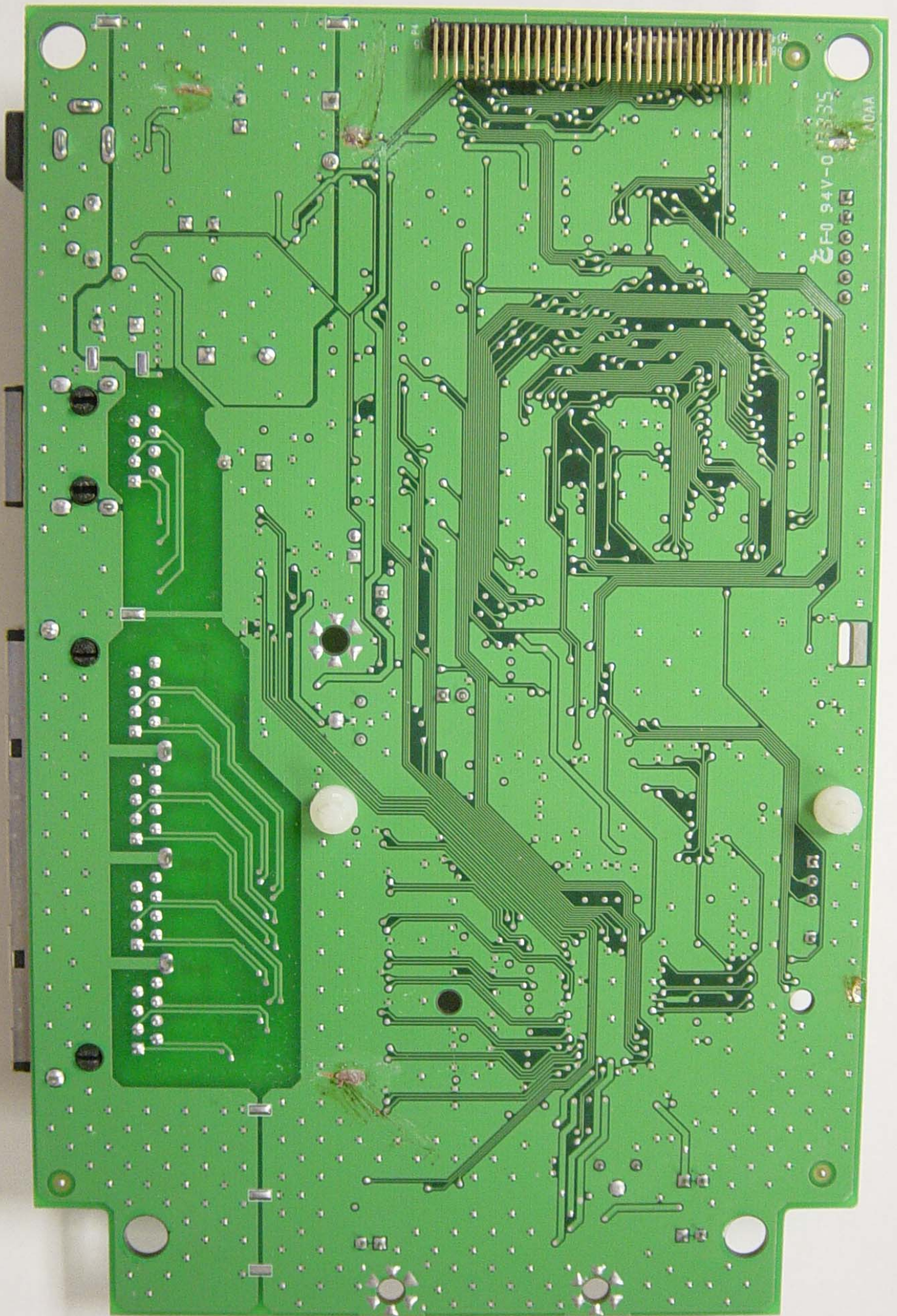
ADMtek
ADM6996
A10323
M83314014-1SL

ZYDAS
ZD2001
MF B4006 2 0319
TAIWAN

Winbond
W83C177
22255500
A1M4

Made in Taiwan

45-401-000523



CF0 94V-0 13335
A0AA