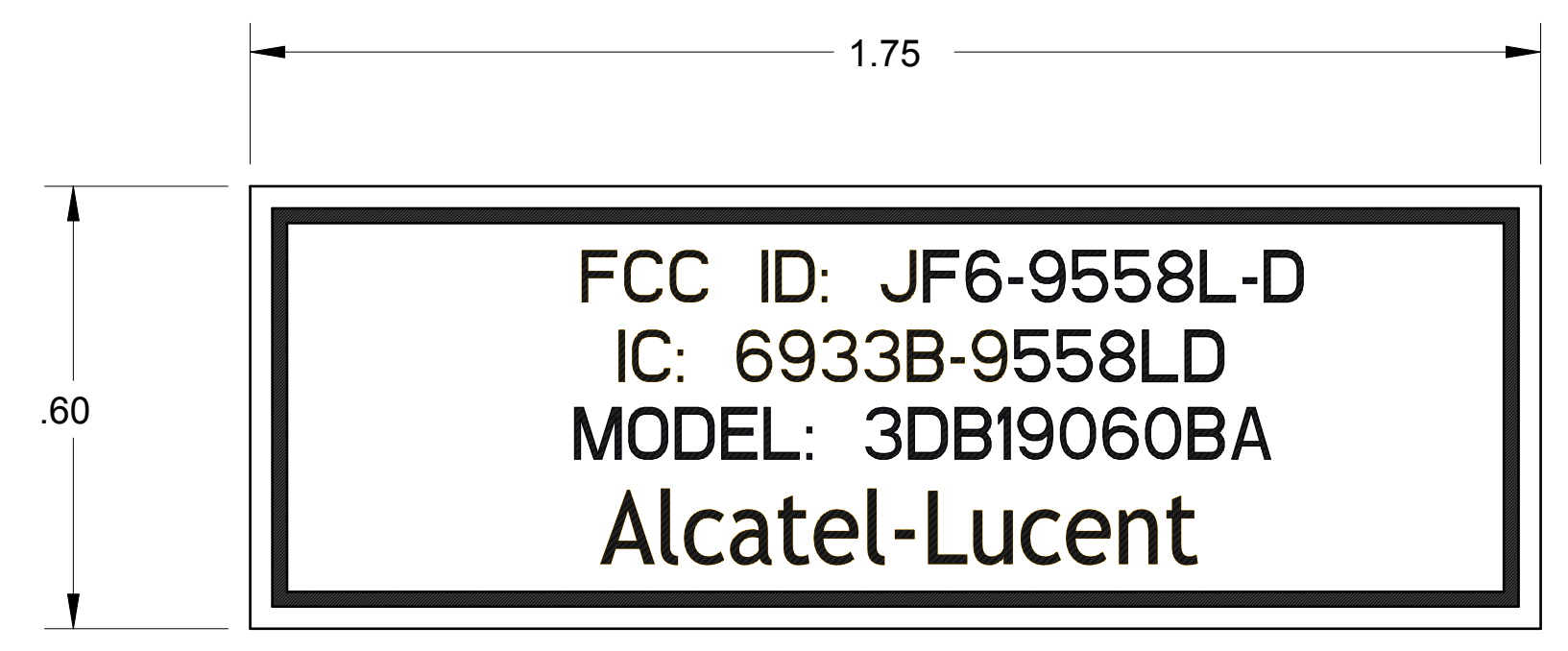


NOTE:

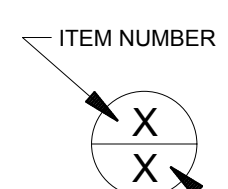
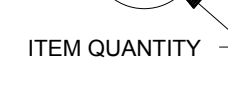
1. SPACE OR USAGE PRECLUDES IDENT MARKING.
2. MATERIAL: SCOTCHCAL 220 SERIES SILVER-GRAY, PRESSURE SENSITIVE VINYL OR EQUIVALENT, CHARACTERS AND BORDERS TO BE BLACK.
3. LOCATE TEXT AND LINES ON LABEL APPROX AS SHOWN.

ALCATEL-LUCENT CONFIDENTIAL & PROPRIETARY INFORMATION. CONTAINS TRADE SECRET INFORMATION WHICH IS THE PROPERTY OF ALCATEL-LUCENT AND MUST NOT BE MADE AVAILABLE TO, OR COPIED OR USED BY ANYONE OUTSIDE ALCATEL-LUCENT WITHOUT ITS WRITTEN AUTHORIZATION.

THIS TRANSFER OF COMMODITIES, TECHNOLOGY OR SOFTWARE, IF FROM THE UNITED STATES, IS AN EXPORT IN ACCORDANCE WITH THE U.S. EXPORT ADMINISTRATION REGULATIONS. DIVERSION CONTRARY TO U.S. LAW PROHIBITED. THE EXPORT OR RE-EXPORT (FOR THE TRANSFER OF SUCH COMMODITIES, TECHNOLOGY, SOFTWARE OR PRODUCTS MADE FROM SUCH TECHNOLOGY IS PROHIBITED WITHOUT PROPER AUTHORIZATION(S)) FROM THE U.S. DEPARTMENT OF COMMERCE OR OTHER APPROPRIATE U.S. GOVERNMENT AGENCY(S).



SCALE 4.000

ITEM BALLOON LEGEND	
	ITEM NUMBER
	ITEM QUANTITY

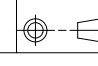
UNLESS OTHERWISE SPECIFIED:
ALL DIMENSIONS ARE IN INCHES.
DEFAULT TOLERANCE ON DIMENSIONS:
.XX = ±0.02, .XXX = ±0.008

TOLERANCE ON HOLE DIAMETERS:
UNDER 0.251 DIA. = ±0.005
0.251 to .500 DIA. = +0.008/-0.005
OVER 0.500 DIA. = +0.008/-0.005

TOLERANCE ON ANGLES: ±1°

CONCENTRICITY BETWEEN DIA ON A COMMON AXIS TO BE WITHIN .010.

PART SHALL COMPLY TO 580-5400-001.

MATERIAL	SEE NOTE 2	FINISH	SEE NOTE 3	GEN TOL	
ED DATE	01 2015 MAR 02				
CHANGE NOTE	INITIAL RELEASE				
APPR. AUTHOR.	M. RYLAND	-NSIDS			
ORIGINATOR	B. BROWN	-NSIDS			
			LABEL, FCC, ID w/Diversity 9500 MPT-HLC w/ DIVERSITY		
		SCALE 1.000	3DB 76211 AAAA HCZZA		SHEET 1 OF 1

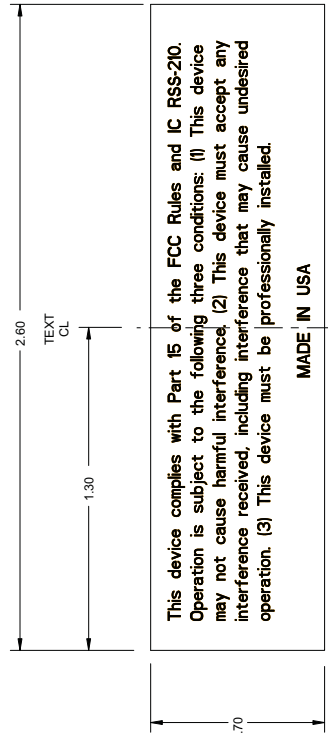
14A 00114 0000 ASZZA (P11) D PRO-E

NEXT ASSY: TYPE NO.:



NOTE:

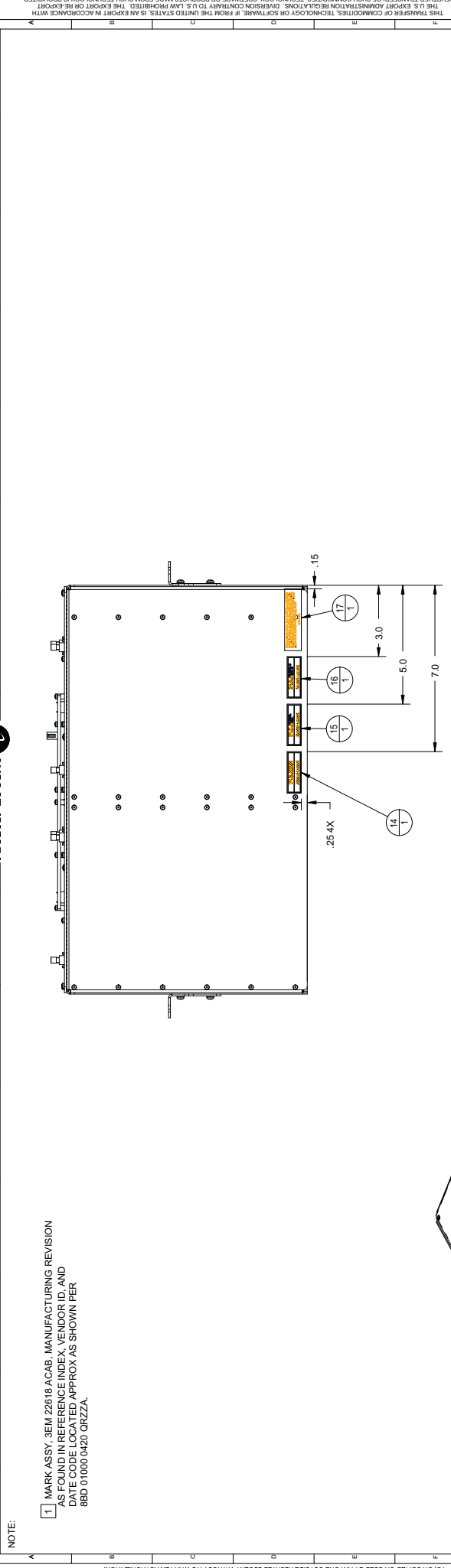
1. MARK 3EM 11523 AAAA MANUFACTURING REV (MFG_REV) AS FOUND IN REFERENCE INDEX, VENDOR ID, AND DATE CODE LOCATED APPROX AS SHOWN PER 88DD010000420 GRZZA.
2. MATERIAL: SCOTCHCAL 220 SERIES SILVER GRAY, PRESSURE SENSITIVE VINYL OR EQUIVALENT, CHARACTERS TO BE BLACK.



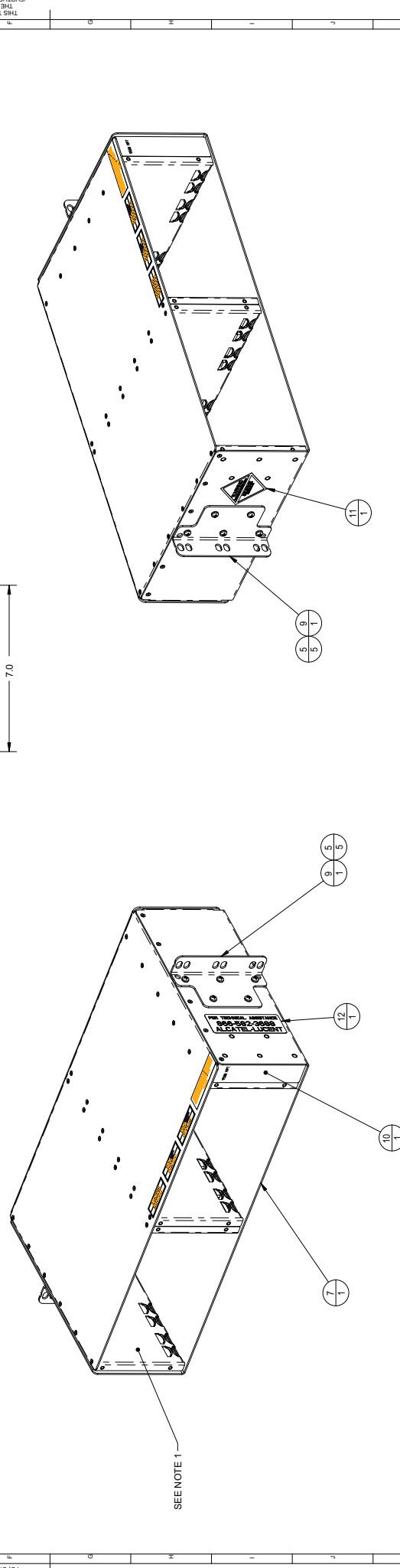
THIS TRANSFER OF COMMODITIES, TECHNOLOGY OR SOFTWARE, FROM THE UNITED STATES, IS AN EXPORT IN ACCORDANCE WITH THE U.S. EXPORT ADMINISTRATION REGULATIONS. DIVISION CONTRACTOR TO U.S. LAW PROHIBITS THE EXPORT OR RE-EXPORT (WITHOUT PROPER AUTHORIZATION) FROM THE U.S. DEPARTMENT OF COMMERCE OR OTHER APPROPRIATE U.S. GOVERNMENT AGENCY(S).

ITEM/ALCOA LEGEND		MATERIAL		FRSH		GEN TOL	
ITEM NUMBER		SEE NOTE 2		01		2002 JUL 01	
ITEM QUANTITY		CHANGE NOTE		EML0041			
		APPR. AUTHORITY		S. CARSON		NEEDS	
		ORIGINATOR		D. TORREZ		NEEDS	
		LABEL, FCC		3EM 11523 AAAA HCZZA		REV 1	
		PARTIAL COPY TO PARASORT		4.000		1 OF 1	

Copyright © Al@tel-Lucent



NOTE:
 1 MARK ASSY: 3EM 22618 ACAB. MANUFACTURING REVISION AS FOUND IN REFERENCE INDEX. VENDOR ID, AND PTE CODES LOCATED APPROX AS SHOWN PER 8BD 01000 0420 GRZZA.



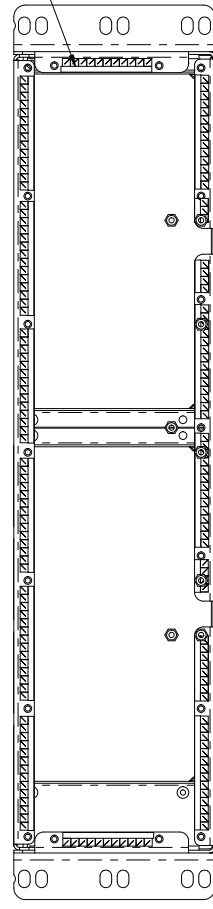
ITEM/ALCOA LEGEND		MATERIAL		N/A		FRESH		GEN TOL	
ITEM NUMBER	ITEM QUANTITY	ED DATE	01	JUN 12 2014	02	NOV 12 2014	03	20140328	
		CHANGE NOTE	INITIAL RELEASE		ECC-000000000		ECC-000000000		
		APPR. AUTHORITY	M. RYLAND		NEEDS M. RYLAND		M. RYLAND		
		ORIGINATOR	B. BROWN		NEEDS B. BROWN		B. BROWN		
							ASSEMBLY, CARDOAGE		
							SAV		
							9500 MPR		
							3EM 22618 ACAB HDZZA		
							1.000		
							1.000		
							1.000		

Copyright c Al@er-Lucent

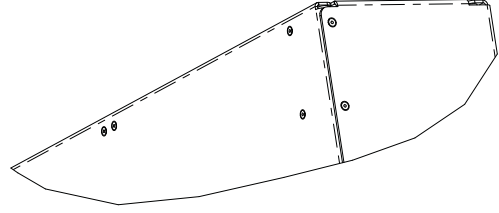
THIS TRANSFER OF COMMODITIES, TECHNOLOGY OR SOFTWARE, FROM THE U.S. DEPARTMENT OF COMMERCE OR OTHER APPROPRIATE U.S. GOVERNMENT AGENCY(S) WITHOUT PROPER AUTHORIZATION(S) IS PROHIBITED. THE U.S. EXPORT ADMINISTRATION REGULATIONS, SOFTWARE OR PRODUCTS MADE FROM SUCH TECHNOLOGY IS PROHIBITED (FURTHER TRANSFER) OF SUCH COMMODITIES, TECHNOLOGY, SOFTWARE OR PRODUCTS MADE FROM SUCH TECHNOLOGY IS PROHIBITED.



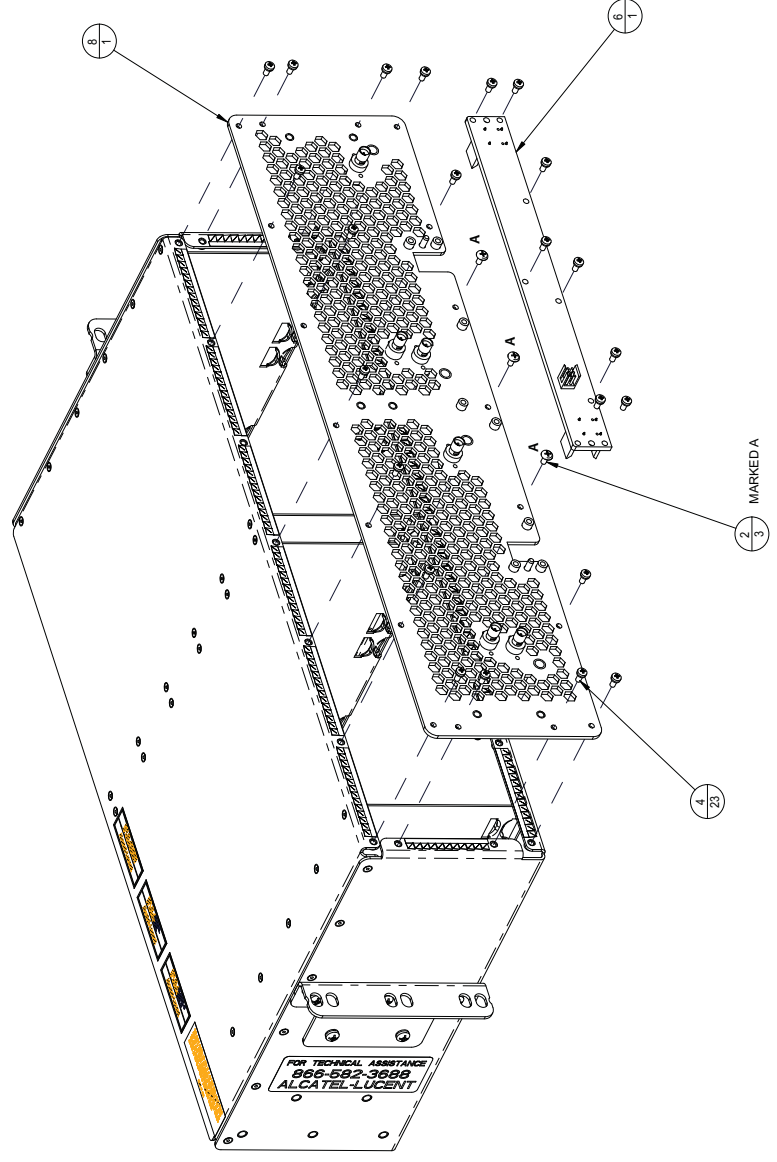
1 2 3 4 5 6 7 8 9 10 11 12 13 14 15 16



EMI GASKET PLACEMENT
BACKPLANE ASSY NOT SHOWN FOR CLARITY



BMA-SMA CONNECTOR INSTALLATION



FOR TECHNICAL ASSISTANCE
866-592-3688
ALCATEL-LUCENT

ALCATEL-LUCENT CONFIDENTIAL & PROPRIETARY INFORMATION CONTAINS TRADE SECRET INFORMATION WHICH IS THE PROPERTY OF ALCATEL-LUCENT AND MUST NOT BE MADE AVAILABLE TO OR COPIED OR USED BY ANYONE OUTSIDE ALCATEL-LUCENT WITHOUT ITS WRITTEN AUTHORIZATION.

THIS TRANSFER OF COMMODITIES, TECHNOLOGY OR SOFTWARE, IF FROM THE UNITED STATES, IS AN EXPORT IN ACCORDANCE WITH THE U.S. EXPORT ADMINISTRATION REGULATIONS. DISSEMINATION TO U.S. LAWYERS IS PROHIBITED. THE EXPORT OR RE-EXPORT WITHOUT PROPER AUTHORIZATION(S) FROM THE U.S. DEPARTMENT OF COMMERCE OR OTHER APPROPRIATE U.S. GOVERNMENT AGENCY(S) IS PROHIBITED.

ED	03	REV. 1.000	SEM 26216 ACAB-103ZA	REV. 1	2 of 2
----	----	------------	----------------------	--------	--------