

# MDR-8000 RADIO

## LABEL PLACEMENT

**NOTES:**

2601. SPACE FOR LABELS IN THE MDR-8000 RADIO IS VERY TIGHT DUE TO ITS SMALL SIZE. SINCE REAL ESTATE IS AT A PREMIUM, LABEL PLACEMENT MUST BE PRECISE TO ACCOMMODATE THE 5 DIFFERENT LABELS SHOWN BELOW.

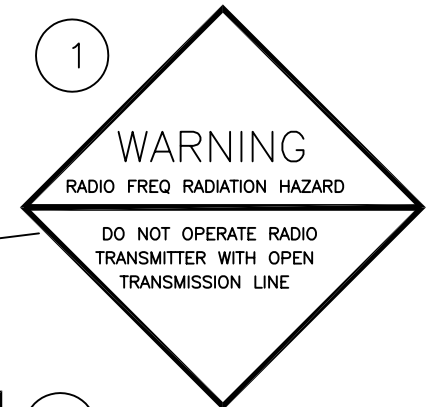
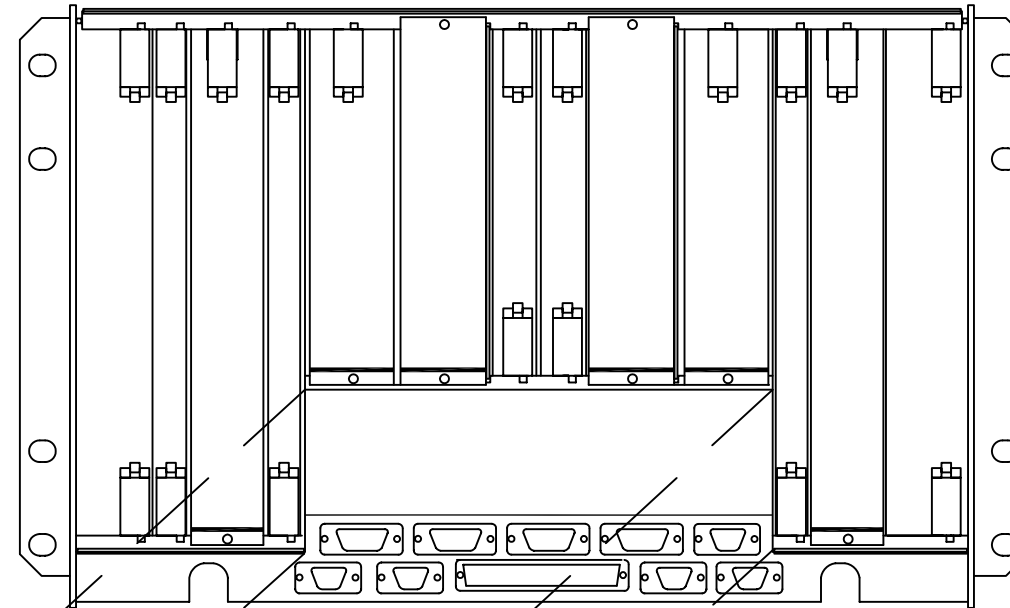
2602. LABELS SHOULD NOT BE PLACED ON REMOVABLE COVERS.

2603. LABELS SHOULD BE PLACED PER CURRENT MANUFACTURING PROCESSES/PROCEDURES. USE THIS DOCUMENT AS A GUIDE.

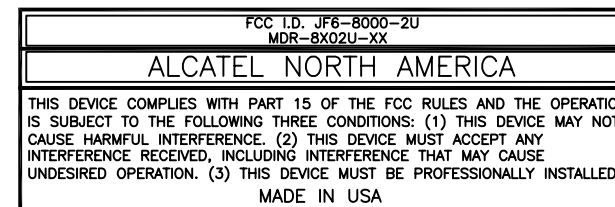
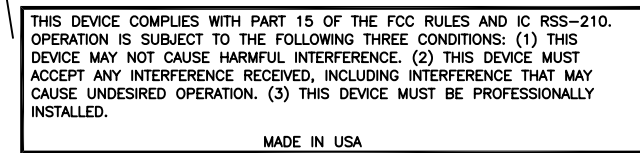
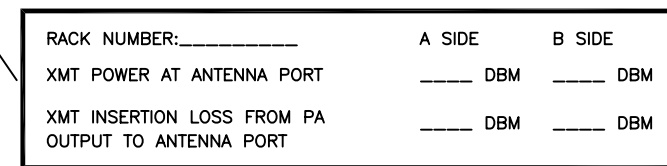
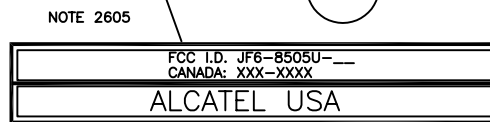
1. RF WARNING LABEL 627-3555-002
2. EQUIPMENT I.D. LABEL (FACTORY SUPPLIED)
3. QUALITY HOTLINE LABEL 694-8674-001
4. INSERTION LOSS LABEL (W/G STACKING FILTERS ONLY)
5. FCC PART 15 LABEL, ALL LICENSED RADIO (FACTORY SUPPLIED)
6. FCC I.D. (UNLICENSED RADIO) 3EM11473AA/AE
7. FCC PART 15 LABEL (UNLICENSED RADIO) 3EM11523AA
8. FCC PART 15 LABEL (2 GHZ UNLICENSED RADIO) 3EM20354AA/AG

2604. REPLACE FCC PART 15 LABEL (ITEM 5) WITH FCC PART 15 LABEL, (ITEM 7) FOR 5 GHZ UNLICENSED BAND RADIOS, OR (ITEM 8) FOR 2 GHZ UNLICENSED BAND RADIOS.

2605. FCC I.D. LABEL (ITEM 6) OR (ITEM 8) REPLACES THE STANDARD EQUIPMENT I.D. LABEL INCLUDED WITH LICENSED RADIOS.



MDR-8000	
EQUIP I.D.	SEE SHEET 4 BJZZA FOR PRODUCT I.D.
RADIO ASSY NO.	
TRANMIT FREQ (MHZ)	XTAL
RECEIVE FREQ (MHZ)	XTAL
SITE NAME	
XMT TO/RCV FROM	
ALCATEL USA, INC.	



MANUFACTURING/INSTALLATION

ED	12	11/29/06	
ALCATEL NETWORK SYSTEMS	Manufacturing/Installation		3DH 03177 0000 RJZZA 26

88D 00057 0000 (930315) D