

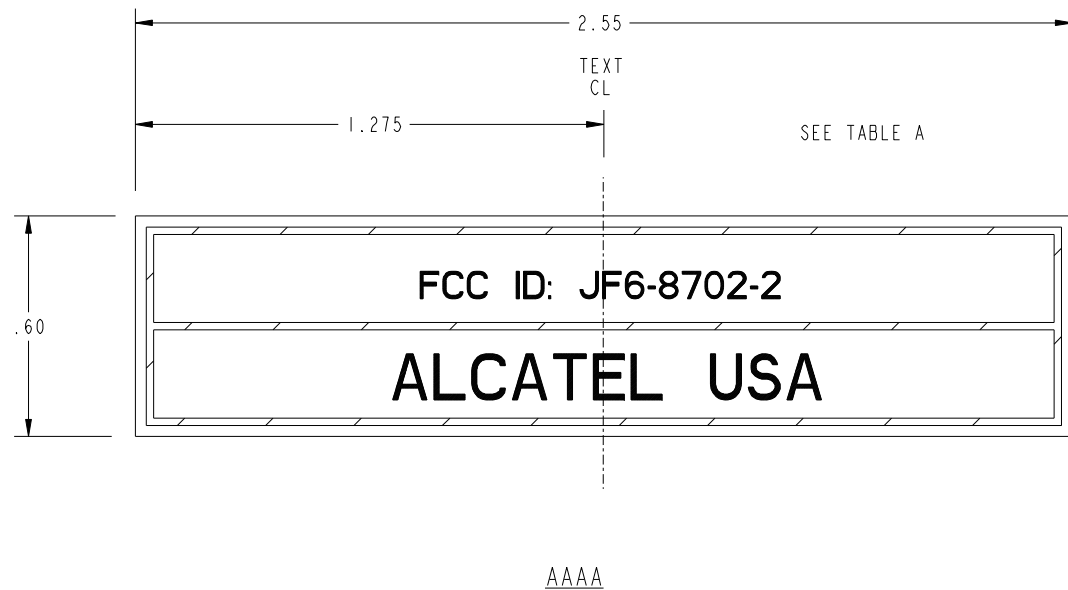
ALCATEL CONFIDENTIAL & PROPRIETARY INFORMATION. CONTAINS TRADE SECRET INFORMATION WHICH IS THE PROPERTY OF ALCATEL AND MUST NOT BE MADE AVAILABLE TO, OR COPIED OR USED BY ANYONE OUTSIDE ALCATEL WITHOUT ITS WRITTEN AUTHORIZATION.

ALCATEL

NOTE:

1. SPACE OR USAGE PRECLUDES IDENT MARKING.
2. MATERIAL: SCOTCHCAL 220 SERIES SILVER-GRAY, PRESSURE SENSITIVE VINYL OR EQUIVALENT, CHARACTERS AND BORDERS TO BE BLACK.
3. LOCATE TEXT AND LINES ON LABEL APPROX AS SHOWN.

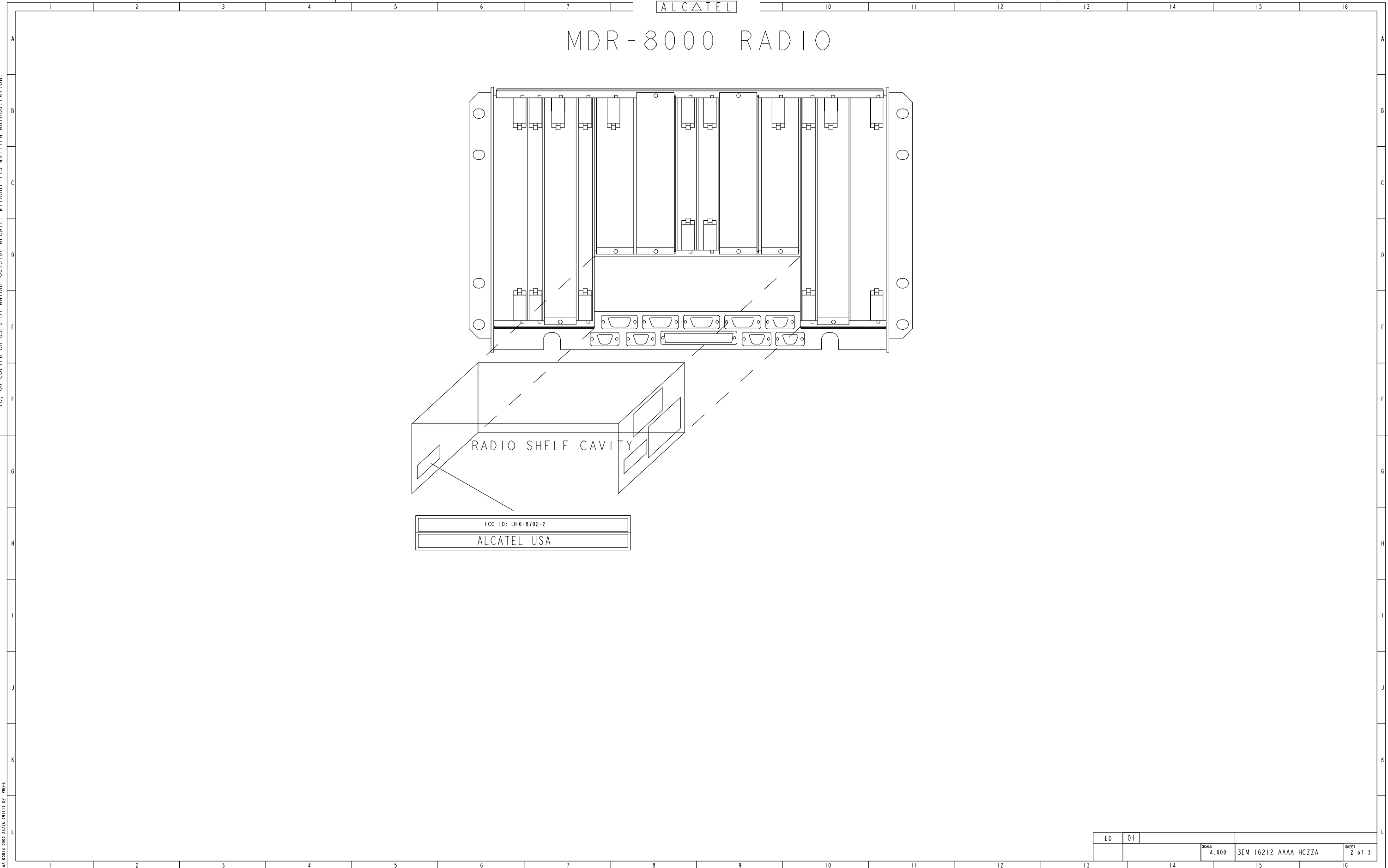
EXHIBIT 1A



THIS TRANSFER OF COMMODITIES, TECHNOLOGY OR SOFTWARE, IF FROM THE UNITED STATES, IS AN EXPORT IN ACCORDANCE WITH THE U.S. EXPORT ADMINISTRATION REGULATIONS. DIVERSION CONTRARY TO U.S. LAW PROHIBITED. THE EXPORT OR RE-EXPORT (FURTHER TRANSFER) OF SUCH COMMODITIES, TECHNOLOGY, SOFTWARE OR PRODUCTS MADE FROM SUCH TECHNOLOGY IS PROHIBITED WITHOUT PROPER AUTHORIZATION(S) FROM THE U.S. DEPARTMENT OF COMMERCE OR OTHER APPROPRIATE U.S. GOVERNMENT AGENCY(S).

<b>ITEM BALLOON LEGEND</b>  ITEM NUMBER ITEM QUANTITY	UNLESS OTHERWISE SPECIFIED: ALL DIMENSIONS ARE IN INCHES. DEFAULT TOLERANCE ON DIMENSIONS: -XX = ±0.02, -XX = ±0.008 TOLERANCE ON HOLE DIAMETERS: UNDER 0.251 DIA. = ±0.005 0.251 to .500 DIA. = +0.006/-0.005 OVER 0.500 DIA. = +0.008/-0.005 TOLERANCE ON ANGLES: ±1° CONCENTRICITY BETWEEN DIA ON A COMMON AXIS TO BE WITHIN .010. PART SHALL COMPLY TO 580-5400-001.	MATERIAL SEE NOTE 2 FINISH GEN TOL
	ED DATE 01 2005 OCT 03 CHANGE NOTE APPR. AUTHOR: S. CARSON -NSIDS ORIGINATOR O. TORREZ -NSIDS	LABEL, FCC SCALE 4.000 3EM 16212 AAAA HCZZA SHEET 1 OF 3

ALCATEL CONFIDENTIAL & PROPRIETARY INFORMATION. CONTAINS TRADE SECRET INFORMATION WHICH IS THE PROPERTY OF ALCATEL AND MUST NOT BE MADE AVAILABLE TO, OR COPIED OR USED BY ANYONE OUTSIDE ALCATEL WITHOUT ITS WRITTEN AUTHORIZATION.



ALCATEL

# MDR-8000 RADIO

RADIO SHELF CAVITY

FCC ID: JF6-8702-2

ALCATEL USA

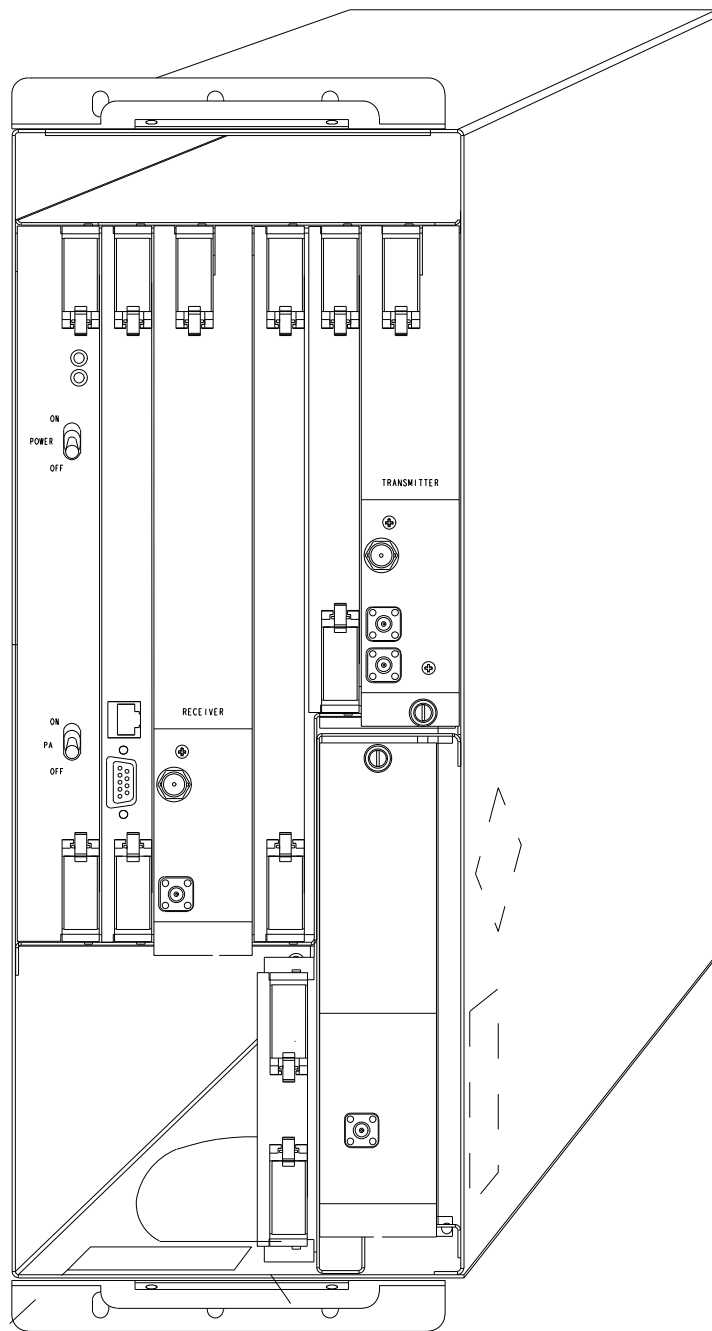
ED	01			
		SCALE	4.000	
			3EM 16212 AAAA HCZZA	SHEET
				2 of 3

THIS TRANSFER OF COMMODITIES, TECHNOLOGY OR SOFTWARE, IF FROM THE UNITED STATES, IS AN EXPORT IN ACCORDANCE WITH THE U.S. EXPORT ADMINISTRATION REGULATIONS. DIVERSION CONTRARY TO U.S. LAW PROHIBITED. THE EXPORT OR RE-EXPORT (FURTHER TRANSFER) OF SUCH COMMODITIES, TECHNOLOGY, SOFTWARE OR PRODUCTS MADE FROM SUCH TECHNOLOGY IS PROHIBITED WITHOUT PROPER AUTHORIZATION(S) FROM THE U.S. DEPARTMENT OF COMMERCE OR OTHER APPROPRIATE U.S. GOVERNMENT AGENCY(S).

ALCATEL CONFIDENTIAL & PROPRIETARY INFORMATION. CONTAINS TRADE SECRET INFORMATION WHICH IS THE PROPERTY OF ALCATEL AND MUST NOT BE MADE AVAILABLE TO, OR COPIED OR USED BY ANYONE OUTSIDE ALCATEL WITHOUT ITS WRITTEN AUTHORIZATION.

ALCATEL

# MDR-8000 CommPak DIGITAL RADIO



FCC ID: JF6-8702-2  
ALCATEL USA

THIS TRANSFER OF COMMODITIES, TECHNOLOGY OR SOFTWARE, IF FROM THE UNITED STATES, IS AN EXPORT IN ACCORDANCE WITH THE U.S. EXPORT ADMINISTRATION REGULATIONS. DIVERSION CONTRARY TO U.S. LAW PROHIBITED. THE EXPORT OR RE-EXPORT (FURTHER TRANSFER) OF SUCH COMMODITIES, TECHNOLOGY, SOFTWARE OR PRODUCTS MADE FROM SUCH TECHNOLOGY IS PROHIBITED WITHOUT PROPER AUTHORIZATION(S) FROM THE U.S. DEPARTMENT OF COMMERCE OR OTHER APPROPRIATE U.S. GOVERNMENT AGENCY(S).

MA 0014 000 4527X 1971.1 02 PRO-E

ED	01		
		SCALE	4.000
		3EM 16212 AAAA HCZZA	SHEET 3 of 3