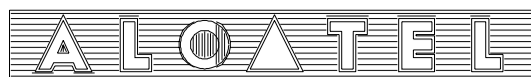


ALL RIGHTS RESERVED. PASSING ON AND COPYING OF THIS DOCUMENT, USE AND COMMUNICATION OF ITS CONTENTS NOT PERMITTED WITHOUT WRITTEN AUTHORIZATION FROM ALCATEL.

1AA 00014 0003 (9308) B - CONCEPT [9602]



NOTES:

1. ALL ELECTRICAL SIGNAL NAMES AND COMPONENTS ARE LISTED IN THE CROSS REFERENCE TABLES.
2. UNLESS OTHERWISE SPECIFIED:
 ALL RESISTANCE VALUES ARE IN OHMS
 ALL CAPACITANCE VALUES ARE IN MICROFARADS
 ALL INDUCTANCE VALUES ARE IN MICROHENRIES
3. INTEGRATED CIRCUIT TYPE NUMBERS SHOWN ARE THOSE NORMALLY EQUIPPED. EQUIVALENT TYPES MAY BE SUBSTITUTED AT TIME OF MANUFACTURE WITH APPROVAL OF ALCATEL COMPONENT APPLICATION ENGINEERING.



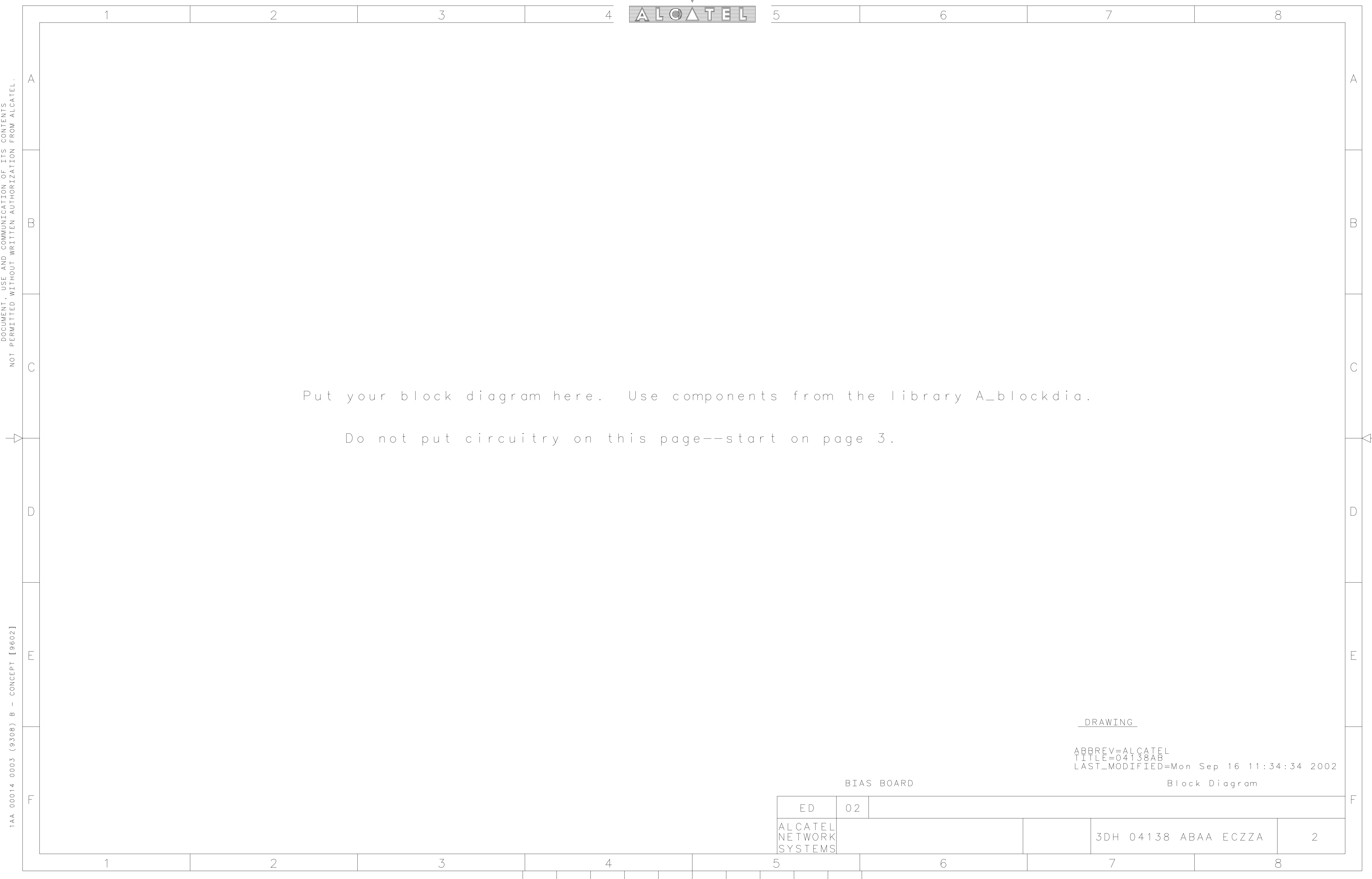
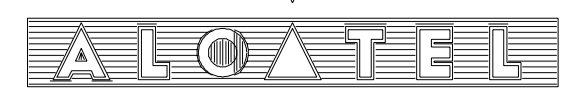
PBA_FAMILY=3DH04135
 VAR_TABLE1=ABAA
 VAR_TABLE2=UNKNOWN
 VAR_TABLE3=UNKNOWN
 VAR_TABLE4=UNKNOWN
 VAR_TABLE5=UNKNOWN
 VAR_TABLE6=UNKNOWN
 VAR_TABLE7=UNKNOWN
 VAR_TABLE8=UNKNOWN
 VAR_TABLE9=UNKNOWN
 VAR_TABLE10=UNKNOWN

DRAWING

ABBREV=ALCATEL
 TITLE=04138AB
 LAST_MODIFIED=Wed Sep 18 14:01:12 2002

ED	REL DATE	01	020710	02	020917		
CHANGE NOTE		EMR10526		F43568			
APPRA AUTHO		Duane Mortensen		Duane Mortensen			
ORIGINATOR		Paul Lorenz		Paul Lorenz			
ALCATEL NETWORK SYSTEMS		MDR-8000 UD-51Z, UD-51AA)			SCHEMATIC BIAS BOARD		
				3DH 04138 ABAA ECZZA		1/6	

ALL RIGHTS RESERVED. PASSING ON AND COPYING OF THIS DOCUMENT, USE AND COMMUNICATION OF ITS CONTENTS NOT PERMITTED WITHOUT WRITTEN AUTHORIZATION FROM ALCATEL.



Put your block diagram here. Use components from the library A_blockdia.

Do not put circuitry on this page--start on page 3.

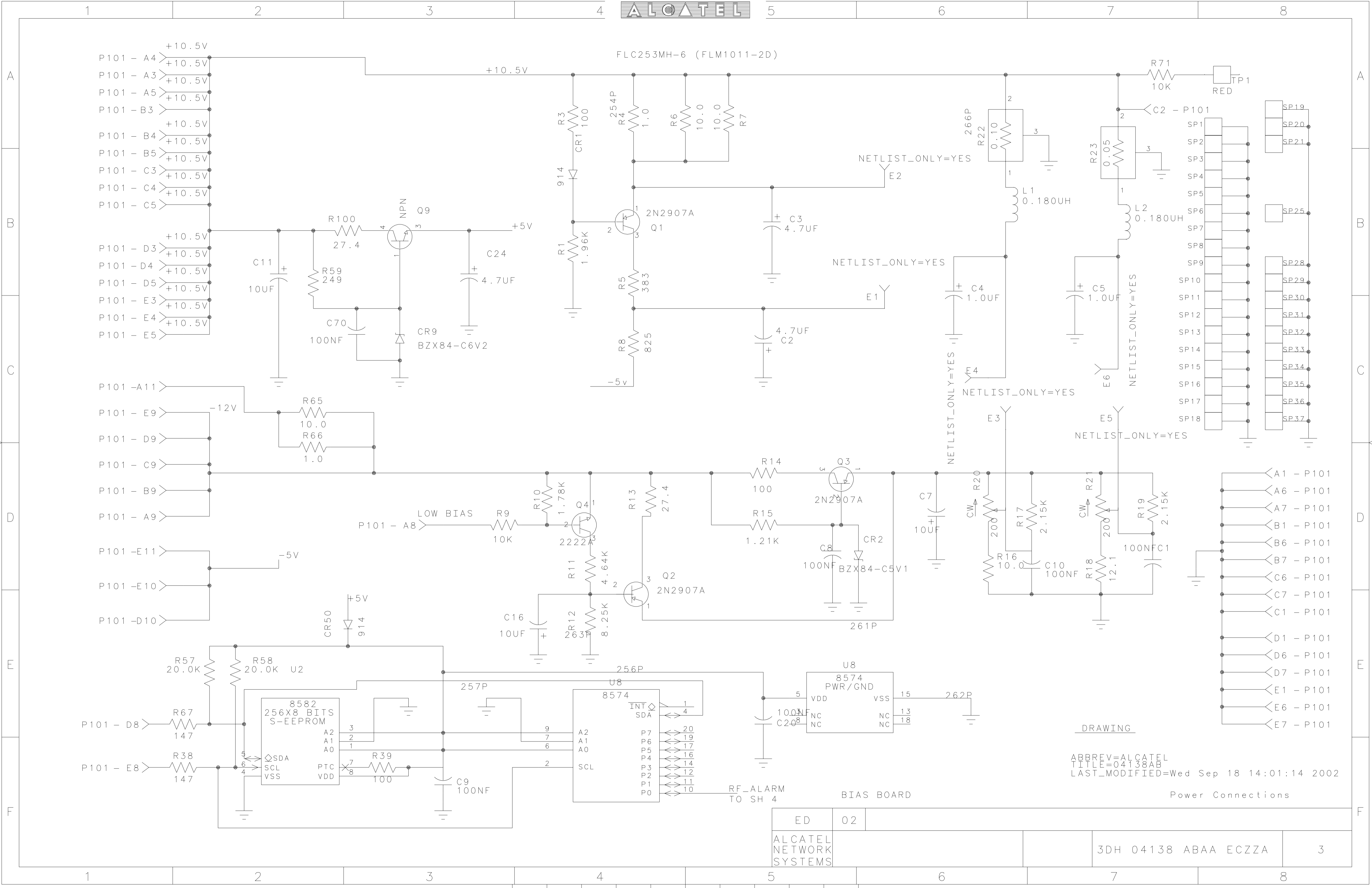
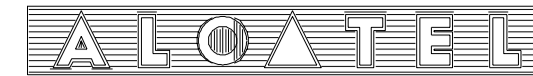
1AA 00014 0003 (9308) B - CONCEPT [9602]

DRAWING
ABBREV=ALCATEL
TITLE=04138AB
LAST_MODIFIED=Mon Sep 16 11:34:34 2002
Block Diagram

BIAS BOARD							
ED	02						
ALCATEL NETWORK SYSTEMS					3DH 04138 ABAA ECZZA	2	

ALL RIGHTS RESERVED. PASSING ON AND COPYING OF THIS DOCUMENT, USE AND COMMUNICATION OF ITS CONTENTS NOT PERMITTED WITHOUT WRITTEN AUTHORIZATION FROM ALCATEL.

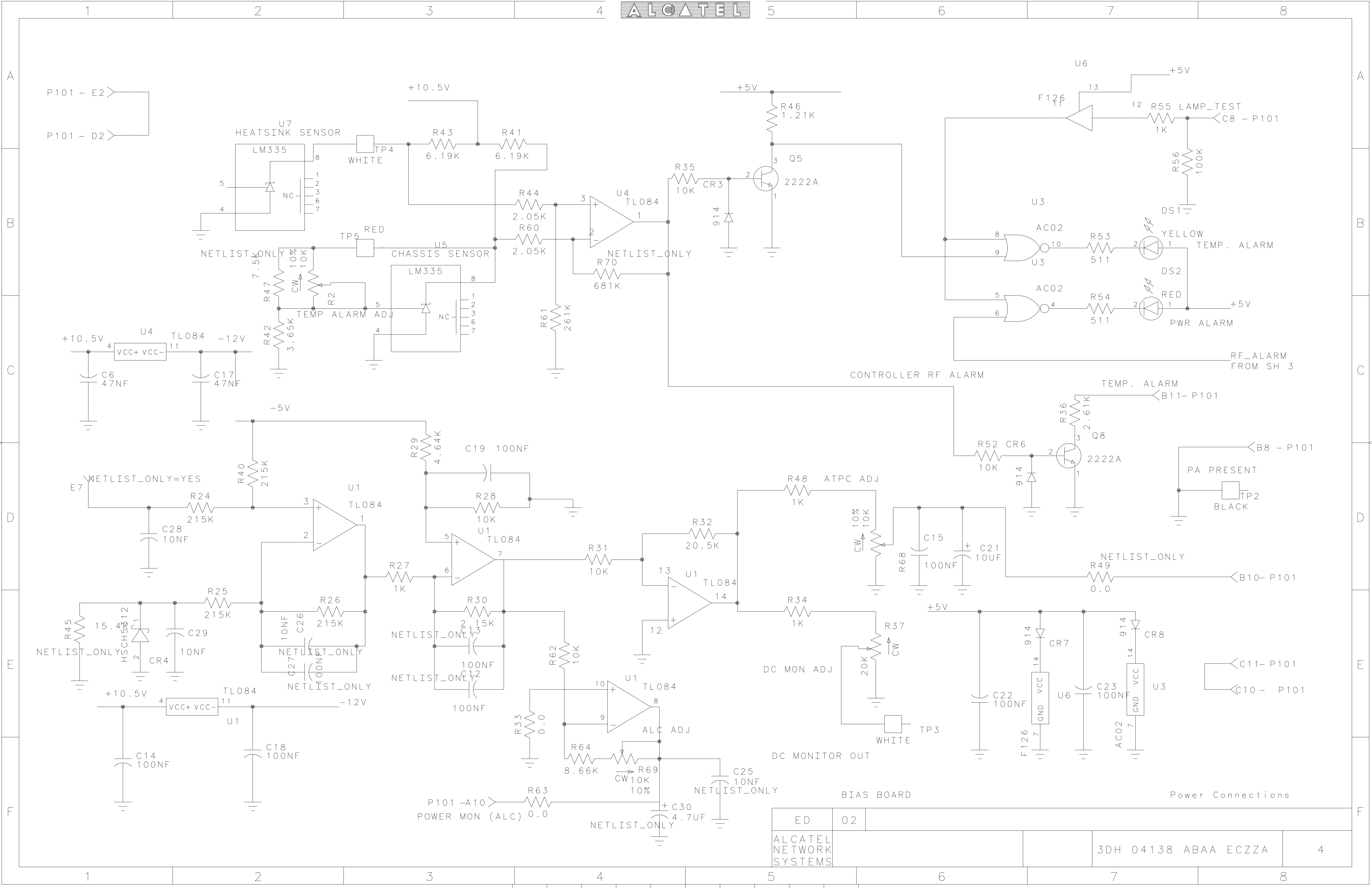
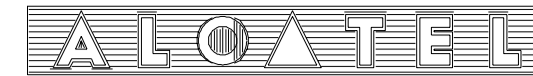
1AA 00014 0003 (9308) B - CONCEPT [9602]



DRAWING
 ABBREV=ALCATEL
 TITLE=04138AB
 LAST_MODIFIED=Wed Sep 18 14:01:14 2002

BIAS BOARD		Power Connections	
ED	02		
ALCATEL NETWORK SYSTEMS		3DH 04138 ABAA ECZZA	
		3	

ALL RIGHTS RESERVED. PASSING ON AND COPYING OF THIS DOCUMENT, USE AND COMMUNICATION OF ITS CONTENTS NOT PERMITTED WITHOUT WRITTEN AUTHORIZATION FROM ALCATEL.

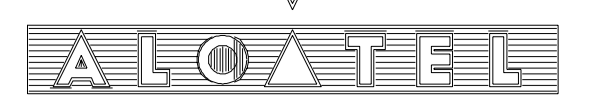


1AA 00014 0003 (9308) B - CONCEPT [9602]

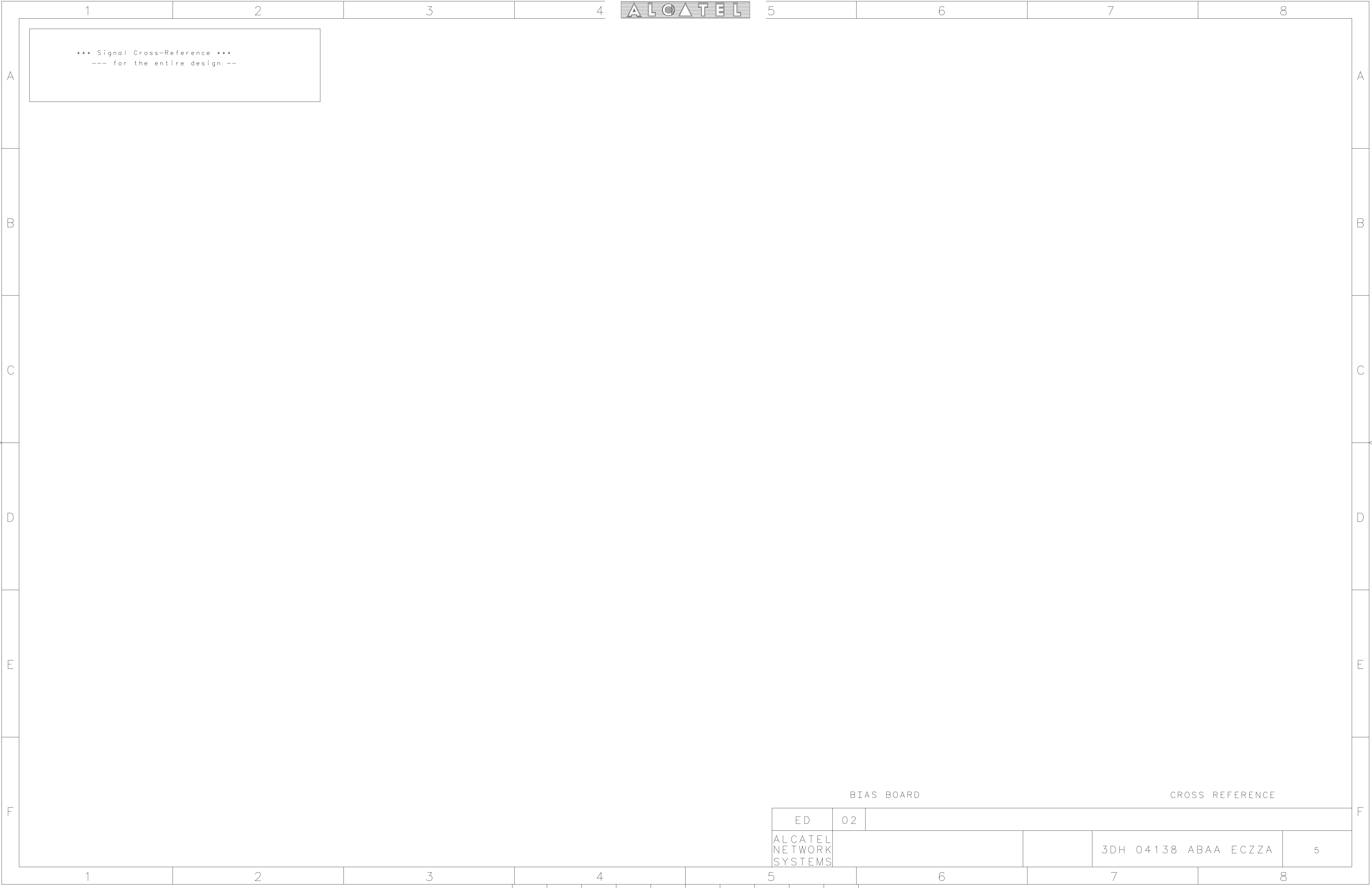
ED	02			
ALCATEL NETWORK SYSTEMS		3DH 04138 ABAA ECZZA		
		4		

ALL RIGHTS RESERVED. PASSING ON AND COPYING OF THIS DOCUMENT, USE AND COMMUNICATION OF ITS CONTENTS NOT PERMITTED WITHOUT WRITTEN AUTHORIZATION FROM ALCATEL.

1AA 00014 0003 (9308) B - CONCEPT [9602]



*** Signal Cross-Reference ***
--- for the entire design ---



BIAS BOARD

CROSS REFERENCE

ED	02						
ALCATEL NETWORK SYSTEMS						3DH 04138 ABAA ECZZA	5

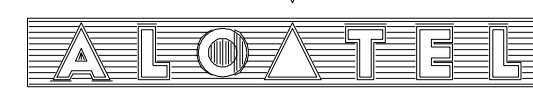
1 2 3 4 5 6 7 8

A
B
C
D
E
F

A
B
C
D
E
F

1 2 3 4 5 6 7 8

ALL RIGHTS RESERVED. PASSING ON AND COPYING OF THIS DOCUMENT, USE AND COMMUNICATION OF ITS CONTENTS NOT PERMITTED WITHOUT WRITTEN AUTHORIZATION FROM ALCATEL.



*** Unit Cross-Reference ***
 --- for the entire design ---

C1 CAP 3D7
 C2 CAPP 3C5
 C3 CAPP 3B5
 C4 CAPP 3B6
 C5 CAPP 3B7
 C6 CAP 4C1
 C7 CAPP 3D6
 C8 CAP 3D5
 C9 CAP 3F3
 C10 CAP 3D7
 C11 CAPP 3B2
 C12 CAP 4E3
 C13 CAP 4E3
 C14 CAP 4F1
 C15 CAP 4D6
 C16 CAPP 3E3
 C17 CAP 4C2
 C18 CAP 4F2
 C19 CAP 4D3
 C20 CAP 3E5
 C21 CAPP 4D6
 C22 CAP 4E6
 C23 CAP 4E7
 C24 CAPP 3B3
 C25 CAP 4F5
 C26 CAP 4E2
 C27 CAP 4E2
 C28 CAP 4D1
 C29 CAP 4E2
 C30 CAPP 4F4
 C70 CAP 3C2
 CR1 DIODE_SOT23 3B4
 CR2 ZENER_SOT23 3D6
 CR3 DIODE_SOT23 4B5
 CR4 SHKY_DIODE 4E1
 CR6 DIODE_SOT23 4D6
 CR7 DIODE_SOT23 4E7
 CR8 DIODE_SOT23 4E7
 CR9 ZENER_SOT23 3C3
 CR50 DIODE_SOT23 3E2
 DS1 LED 4B7
 DS2 LED 4B7
 E1 V1R0_JACK 3C6
 E2 V1R0_JACK 3B6
 E3 V1R0_JACK 3C6
 E4 V1R0_JACK 3C6
 E5 V1R0_JACK 3C7
 E6 V1R0_JACK 3C7
 E7 V1R0_JACK 4D1
 L1 IND 3B6
 L2 IND 3B7
 P101 RA55R0 3A1 3A1 3A7 3B1 3B1 3B1 3C1 3C1 3C1
 3D1 3D1 3D3 3D8 3D8 3E1 3E1 3E8 3E8
 3F1 4A1 4A8 4C7 4D8 4D8 4E8 4F3
 Q1 PNP_R 3B4
 Q2 PNP_R 3D4
 Q3 PNP_R 3D5
 Q4 NPN_R 3D4
 Q5 NPN_R 4B5
 Q8 NPN_R 4C7
 Q9 XSTR_NPN_BIPOLAR_1 3B3
 R1 RES 3B4
 R2 RES_VAR 4B2
 R3 RES 3A4

R4 RES 3A4
 R5 RES 3B4
 R6 RES 3A4
 R7 RES 3A5
 R8 RES 3C4
 R9 RES 3D3
 R10 RES 3D4
 R11 RES 3D4
 R12 RES 3E4
 R13 RES 3D4
 R14 RES 3D5
 R15 RES 3D5
 R16 RES 3D6
 R17 RES 3D6
 R18 RES 3D7
 R19 RES 3D7
 R20 RES_VAR 3D6
 R21 RES_VAR 3D7
 R22 RES_PWR 3A6
 R23 RES_PWR 3B7
 R24 RES 4D2
 R25 RES 4E2
 R26 RES 4E2
 R27 RES 4D3
 R28 RES 4D3
 R29 RES 4D3
 R30 RES 4E3
 R31 RES 4D4
 R32 RES 4D5
 R33 RES 4E4
 R34 RES 4E5
 R35 RES 4B4
 R36 RES 4C7
 R37 RES_VAR 4E6
 R38 RES 3F2
 R39 RES 3F3
 R40 RES 4D2
 R41 RES 4A3
 R42 RES 4C2
 R43 RES 4A3
 R44 RES 4B4
 R45 RES 4E1
 R46 RES 4A5
 R47 RES 4B2
 R48 RES 4D5
 R49 RES 4D7
 R52 RES 4D6
 R53 RES 4B7
 R54 RES 4C7
 R55 RES 4A7
 R56 RES 4B7
 R57 RES 3E2
 R58 RES 3E2
 R59 RES 3B2
 R60 RES 4B4
 R61 RES 4C4
 R62 RES 4E4
 R63 RES 4F4
 R64 RES 4F4
 R65 RES 3C2
 R66 RES 3C2
 R67 RES 3E2
 R68 RES_VAR 4D6
 R69 RES_VAR 4F4
 R70 RES 4B4
 R71 RES 3A7
 R100 RES 3B3

SP1 SINGLE_PIN 3A7
 SP2 SINGLE_PIN 3A7
 SP3 SINGLE_PIN 3B7
 SP4 SINGLE_PIN 3B7
 SP5 SINGLE_PIN 3B7
 SP6 SINGLE_PIN 3B7
 SP7 SINGLE_PIN 3B7
 SP8 SINGLE_PIN 3B7
 SP9 SINGLE_PIN 3B7
 SP10 SINGLE_PIN 3B7
 SP11 SINGLE_PIN 3C7
 SP12 SINGLE_PIN 3C7
 SP13 SINGLE_PIN 3C7
 SP14 SINGLE_PIN 3C7
 SP15 SINGLE_PIN 3C7
 SP16 SINGLE_PIN 3C7
 SP17 SINGLE_PIN 3C7
 SP18 SINGLE_PIN 3C7
 SP19 SINGLE_PIN 3A8
 SP20 SINGLE_PIN 3A8
 SP21 SINGLE_PIN 3A8
 SP25 SINGLE_PIN 3B8
 SP28 SINGLE_PIN 3B8
 SP29 SINGLE_PIN 3B8
 SP30 SINGLE_PIN 3C8
 SP31 SINGLE_PIN 3C8
 SP32 SINGLE_PIN 3C8
 SP33 SINGLE_PIN 3C8
 SP34 SINGLE_PIN 3C8
 SP35 SINGLE_PIN 3C8
 SP36 SINGLE_PIN 3C8
 SP37 SINGLE_PIN 3C8
 TP1 JACK_TEST_1 3A8
 TP2 JACK_TEST_1 4D8
 TP3 JACK_TEST_1 4E6
 TP4 JACK_TEST_1 4B3
 TP5 JACK_TEST_1 4B2
 U1 TL084 4D3 4D4 4E2 4E4
 U2 8582 3E2
 U3 AC02 4B7 4E7
 U4 TL084 4B4 4C1
 U5 LM335 4B3
 U6 F126 4A7 4E7
 U7 LM335 4A2
 U8 8574 3E4 3E5

BIAS BOARD

CROSS REFERENCE

END OF DOCUMENT

ED	02				
ALCATEL NETWORK SYSTEMS				3DH 04138 ABAA ECZZA	6

1AA 00014 0003 (9308) B - CONCEPT [9602]