

SECTION 5
PHOTOGRAPHS

PHOTOS OF THE TESTED EUT

The following photos are attached:

- Photo 1. EUT, Power Supply Front View
- Photo 2. EUT, Power Supply Rear View
- Photo 3. EUT, Power Supply Top View of Board
- Photo 4. EUT, Power Supply Bottom View of Board
- Photo 5. EUT, Front View of CBS II
- Photo 6. EUT, Rear View of CBS II
- Photo 7. EUT, CBS II, Digital Board, Top View
- Photo 8. EUT, CBS II, Digital Board, Bottom View
- Photo 9. EUT, CBS II, Transceiver Board, Top View
- Photo 10. EUT, CBS II, Transceiver Board, Bottom View
- Photo 11. Top View of Transmit Antenna (Passive Patch)
- Photo 12. Bottom View of Transmit Antenna (Passive Patch)
- Photo 13. Top View of Receive Antenna – Type 1 (Patch w/ LNA)
- Photo 14. Bottom View of Receive Antenna – Type 1 (Patch w/ LNA)
- Photo 15. Top View of Receive Antenna – Type 2 (1/4 Wave Monopole w/ LNA)
- Photo 16. Bottom View of Receive Antenna – Type 2 (1/4 Wave Monopole w/ LNA)

Photo 1. EUT, Power Supply Front View



Photo 2. EUT, Power Supply Rear View



Photo 3. EUT, Power Supply Top View of Board

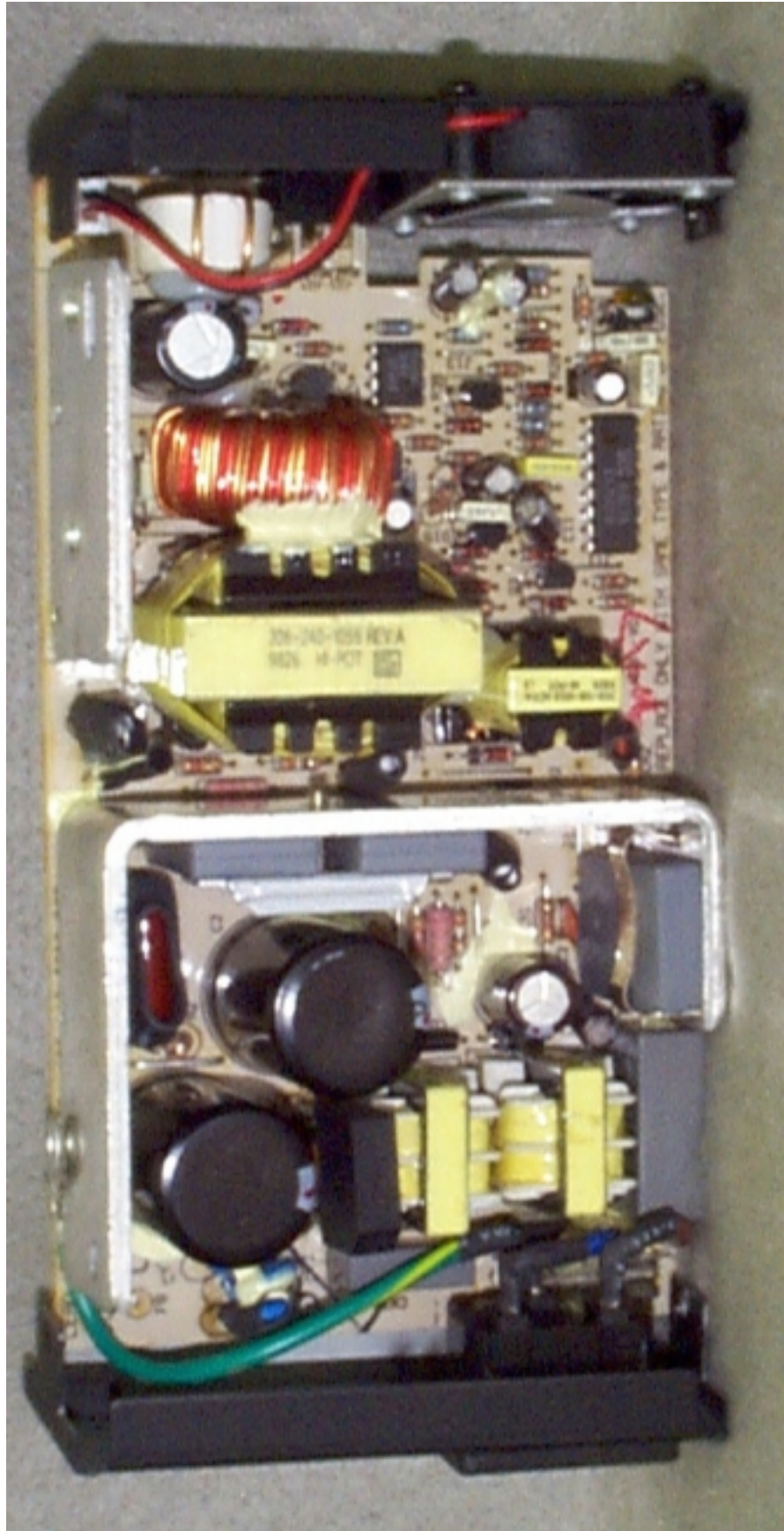


Photo 4. EUT, Power Supply Bottom View of Board

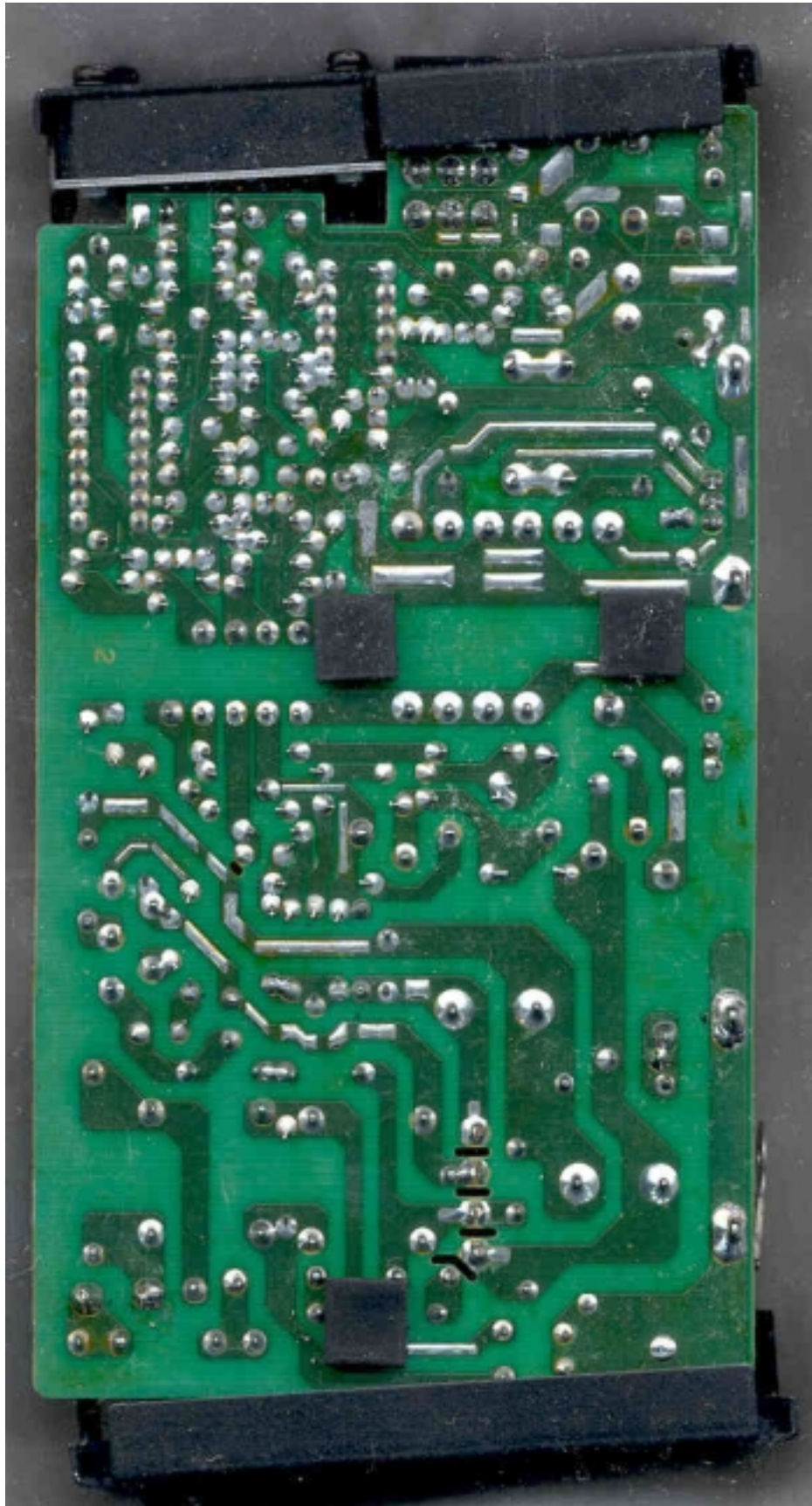


Photo 5. EUT, Front View of CBS II



Photo 6. EUT, Rear View of CBS II

