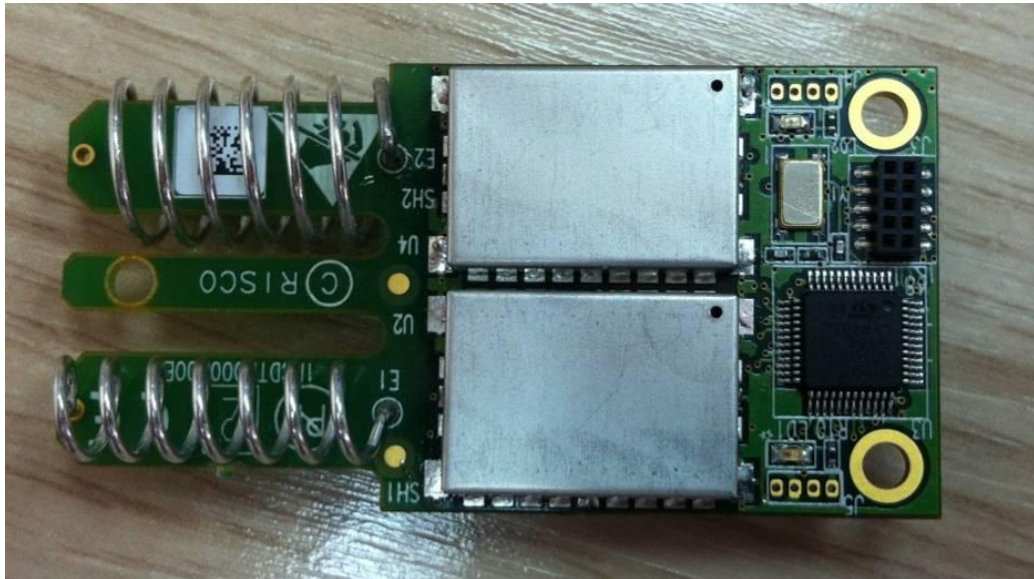


Risco Group Modular  
Certification

## Instructions to OEM

P/N Number: RWDTR4S916VE-40

FCC ID: JE4STAMP433-916



## 1. Revision History

Revision	Revision Description of Changes
3 April 2014	Initial Release

## 2. Introduction

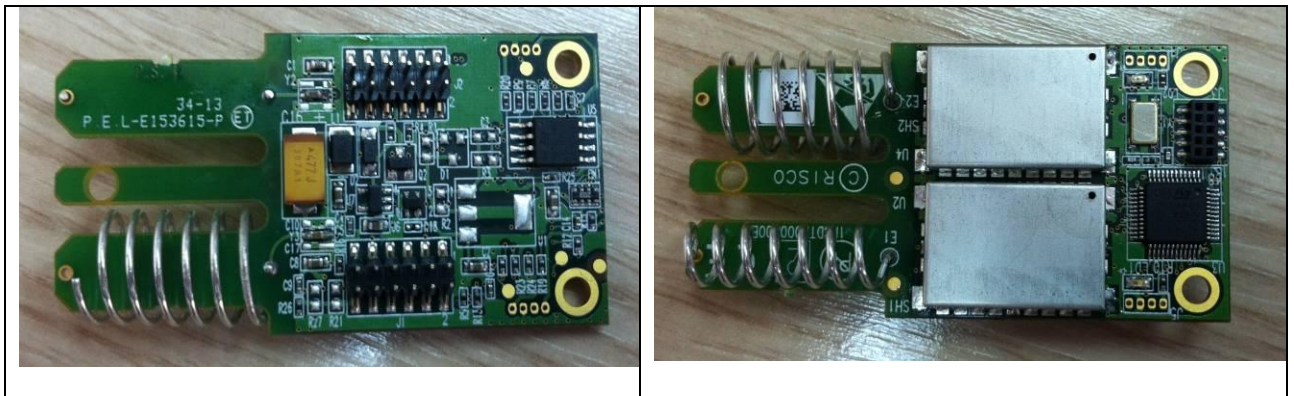
This document describes mandatory steps required by the OEM Integrator when assembling the RF Module to the unit.

This document lists the mandatory responsibilities and actions of the OEM integrator.

Failure to comply with all requirements and conditions in this document may result in non compliance of the device with FCC rules and invalidate the RISCO Group FCC certification for the RF Module.

### 3. Overview

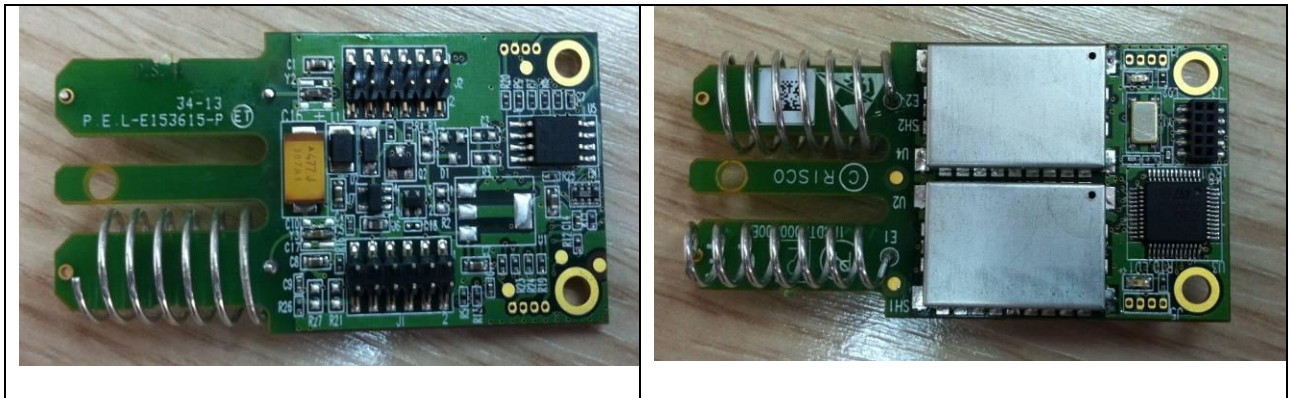
The RWDTR4S916VE-40 is a RF Module transmits in 433.92Mhz and 916Mhz. Is an add-in unit that can be incorporated into security alarm systems. The RF Module offers connectivity to or from the main panel a security system.



Pic 1

## 4. Installation instruction

Assemble the RF Module, pay attention to polarity (see Pic 2).



Pic 2

## 5. FCC statement

This equipment has been tested and found to comply with the limits for a class B digital device, pursuant to part 15 of the FCC Rules. These limits are designed to provide reasonable protection against harmful interference in a residential installation. This equipment generates, uses and can radiate radio frequency energy and if not installed and used in accordance with the instructions, may cause harmful interference to radio communications. However, there is no guarantee that interference will not occur in a particular installation. If this equipment does cause harmful interference to radio or television reception, which can be determined by turning the equipment off and on, the user is encouraged to try to correct the interference by one or more of the following measures:

1. Reorient or relocate the receiving antenna.
2. Increase the separation between the equipment and receiver.
3. Connect the equipment into an outlet on a circuit different from that to



- which the receiver is connected.
4. Consult the dealer or an experienced radio/TV technician for help. In order to maintain compliance with FCC regulations, shielded cables must be used with this equipment. Operation with non-approved equipment or unshielded cables is likely to result in interference to radio and TV reception. The user is cautioned that changes and modifications made to the equipment without the approval of manufacturer could void the user's authority to operate this equipment.

Contains Transmitter Module FCC ID: JE4STAMP433-916

This device complies with Part 15 of the FCC Rules. Operation is subject to the following two conditions:

1. This device may not cause harmful interference.
2. This device must accept any interference received, including Interference that may cause undesired operation.

## **6. OEM instructions**

1. The RF module is limited to OEM installation **only**.
2. The OEM integrator is responsible for that the end-user has no manual instructions to remove or install the module.
3. The module is limited to installation in mobile or fixed applications, according to part 2.1091(b).
4. Separate approval is required for all other operating configurations, including portable configurations with respect to part 2.1093 and different antenna configurations.
5. Labeling instructions of finished products must contain the following – contains module FCC ID: JE4STAMP433-916

The OEM/ integrator must include the following instructions/statements in the host user's manual (i.e. end product).

1. Statement is required per FCC part 15.19 and 15.21.