

INTERNAL PHOTOGRAPHS

This document contains 11 photographs

Photograph No.1
Siren internal view



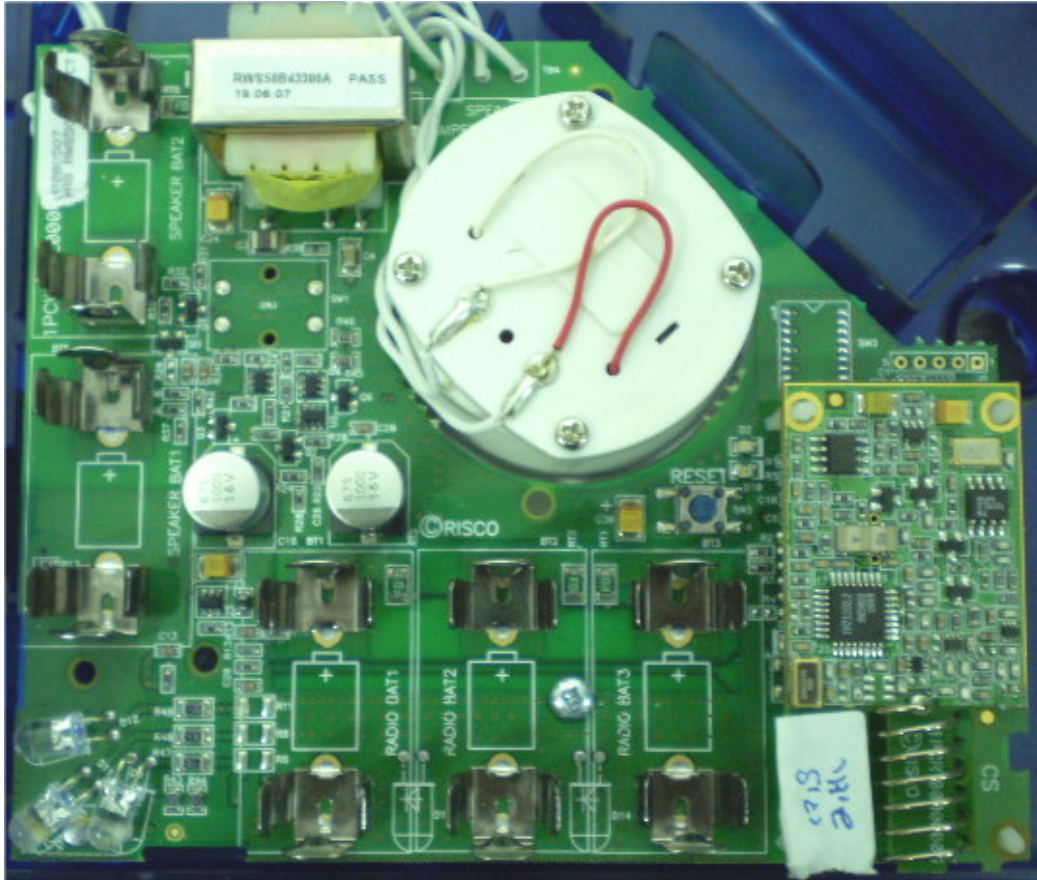
Photograph No.2
Siren rear side view



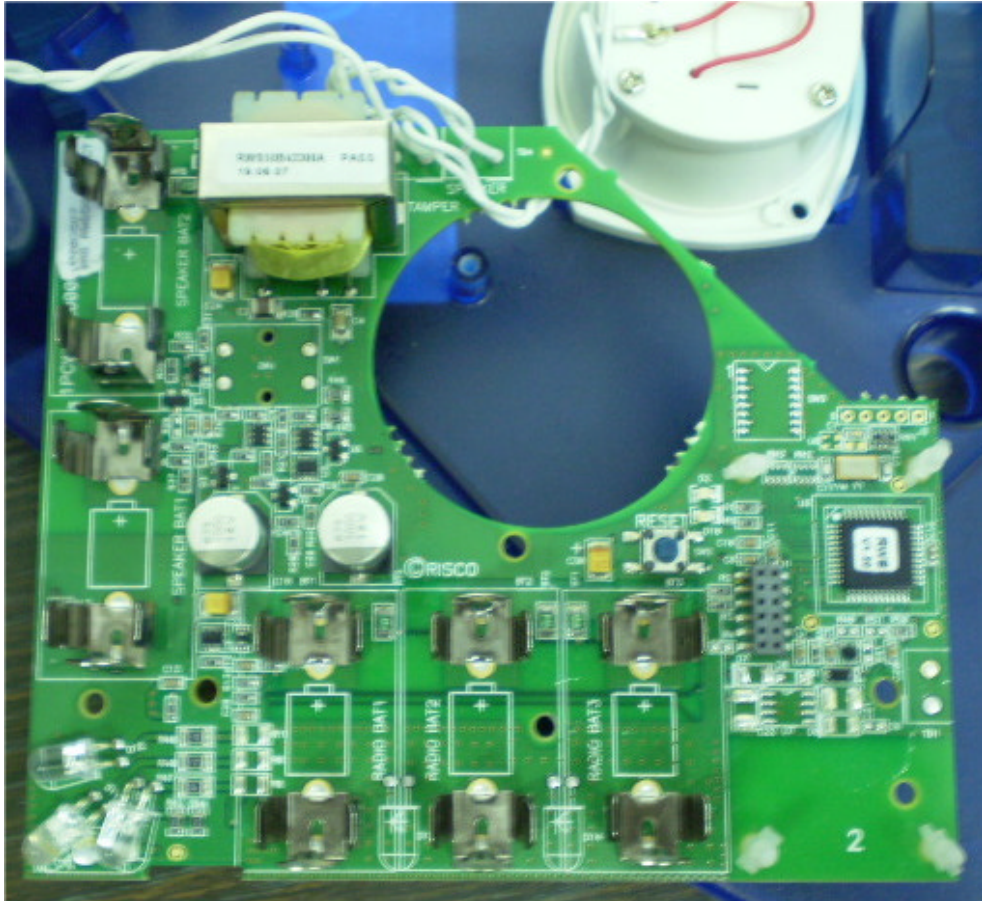
Photograph No.3
Siren internal view with cover removed



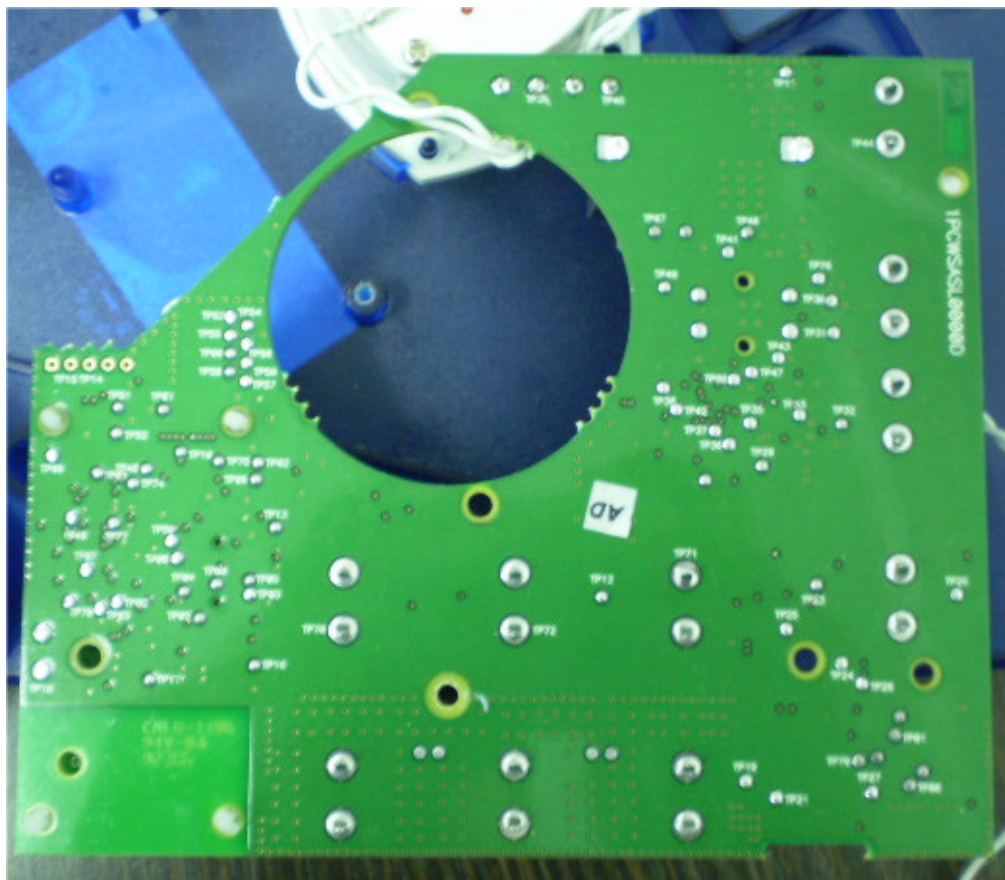
Photograph No.4
Main PCB frontview



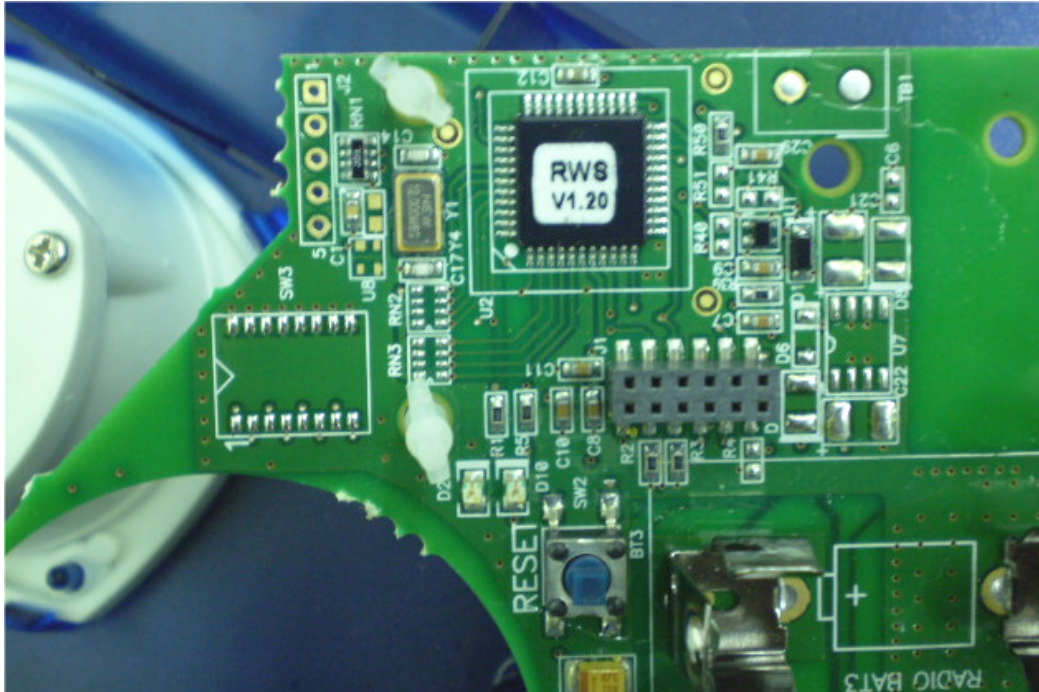
Photograph No.5
Main PCB with siren removed



Photograph No.6
Main PCB rear side view



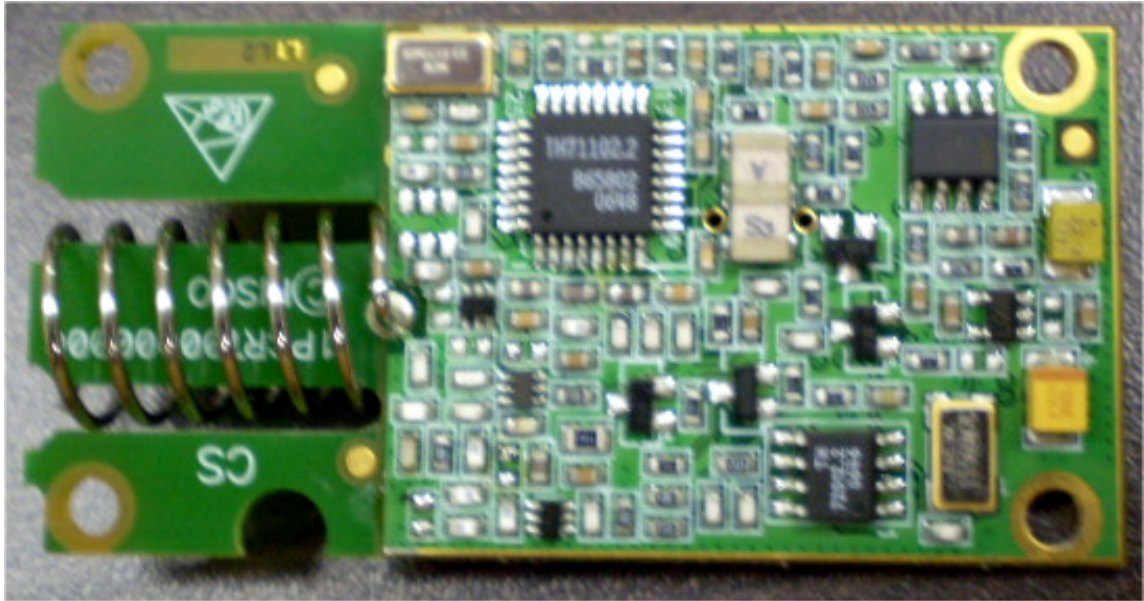
Photograph No.7
PCB close view



Photograph No.8
PCB close view



Photograph No.10
RF card front view



Photograph No.11
RF card rear side view

