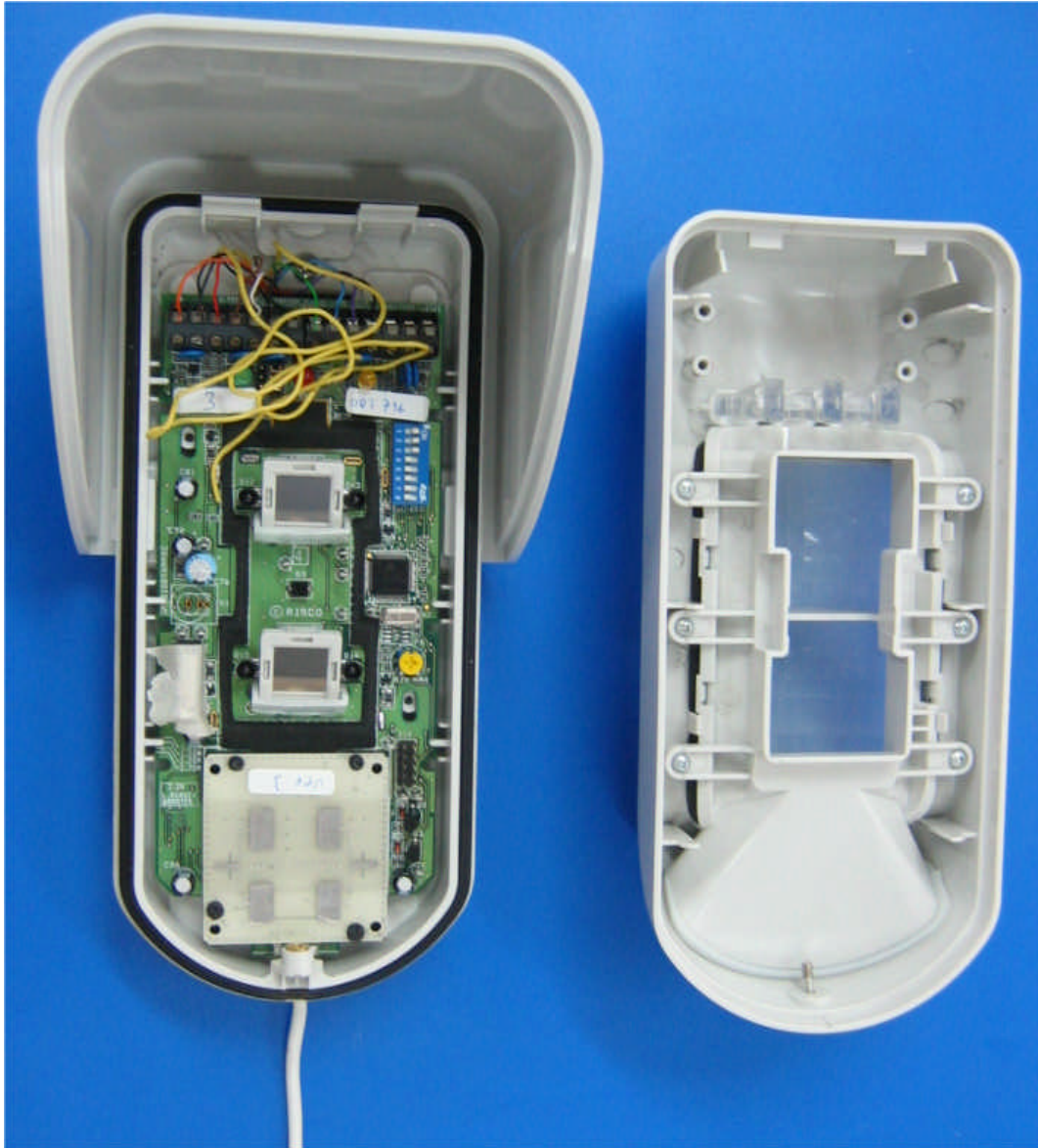


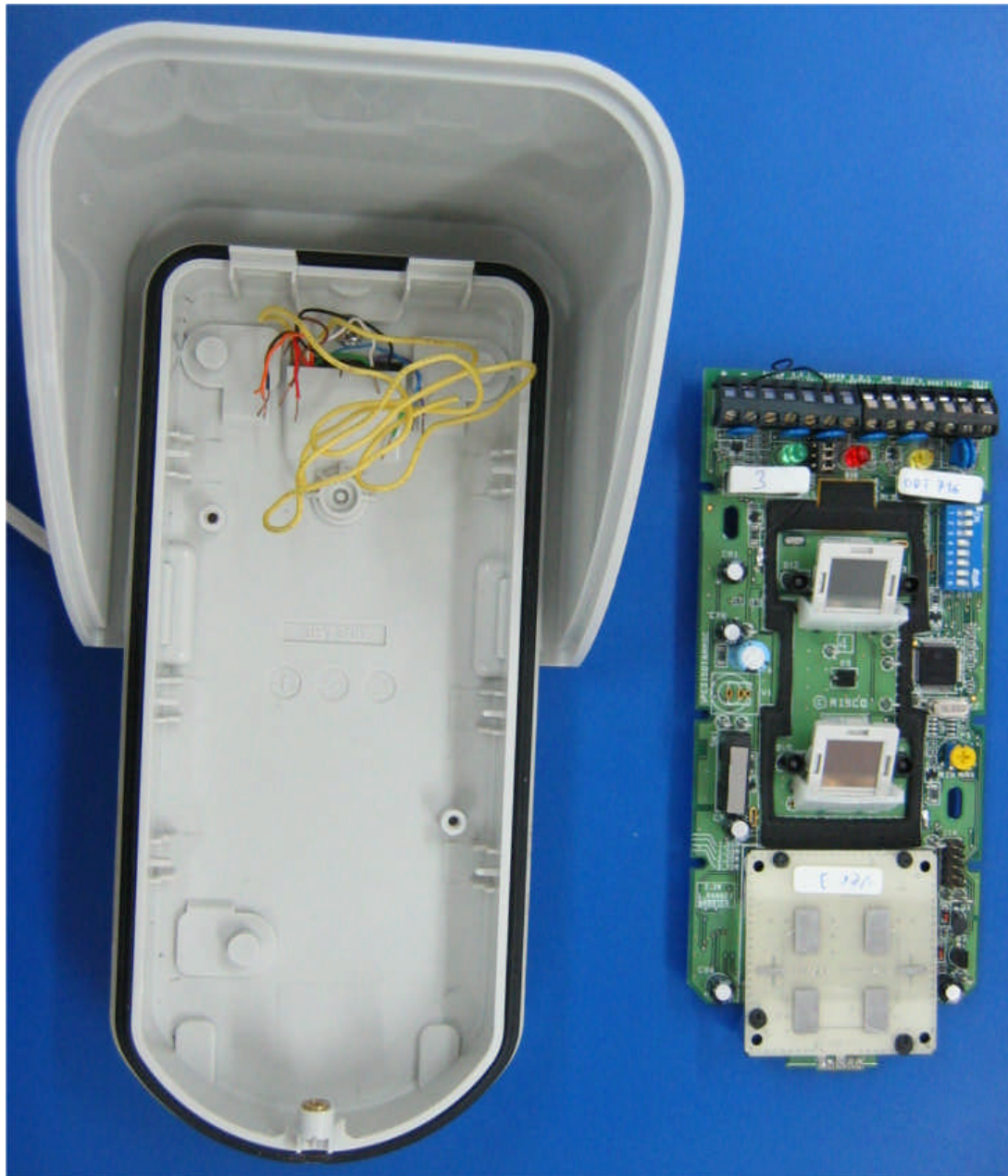
INTERNAL PHOTOGRAPHS, Rev.1

This document contains 11 photographs

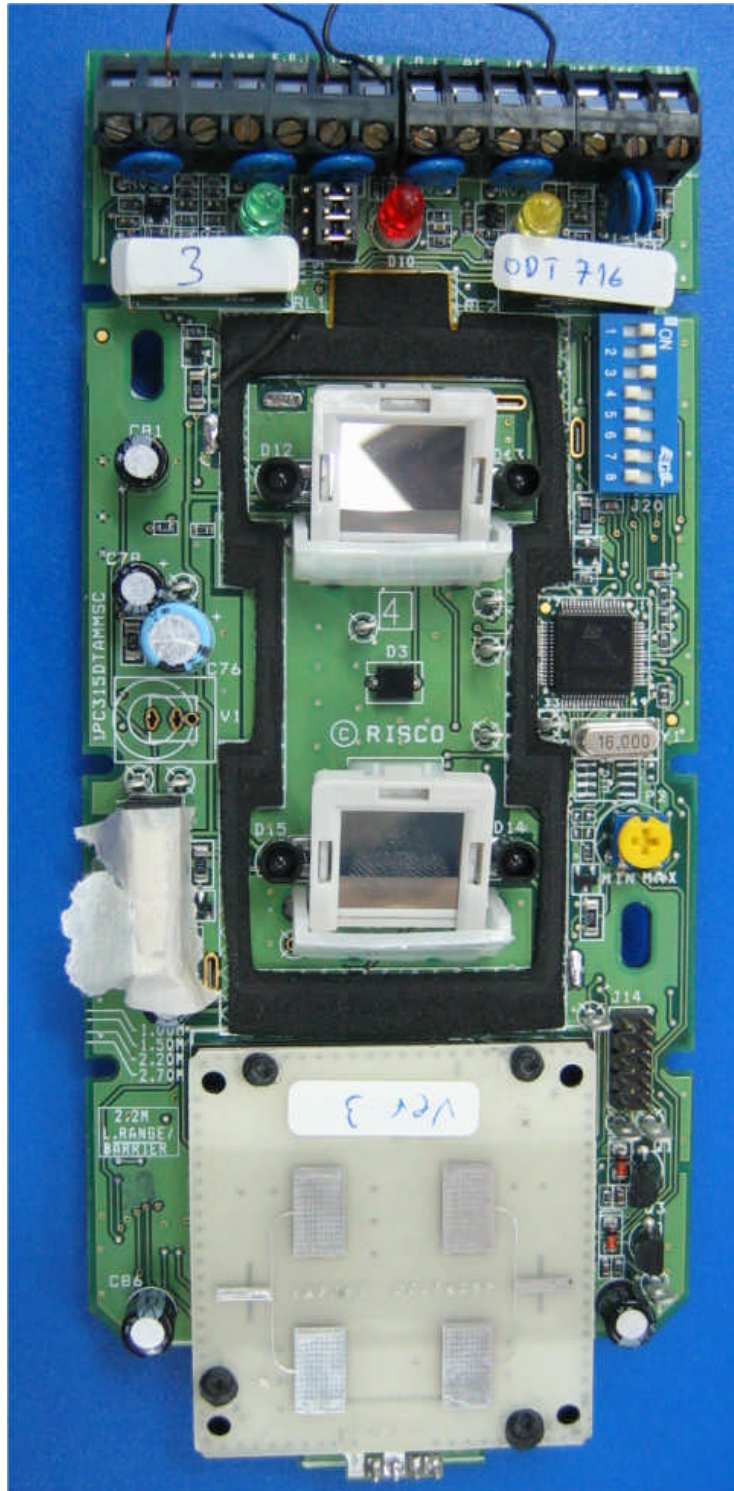
Photograph No.1
RK315DT0000A detector internal view



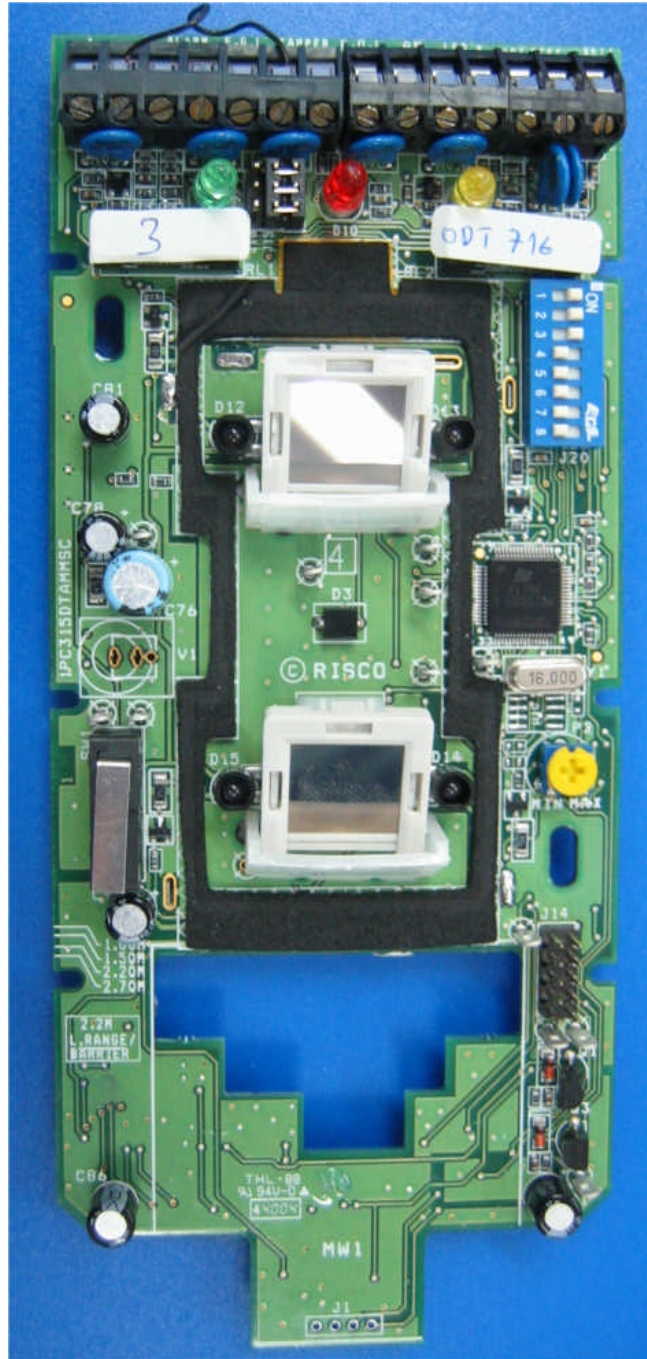
Photograph No.2
RK315DT0000A detector internal view with enclosure removed



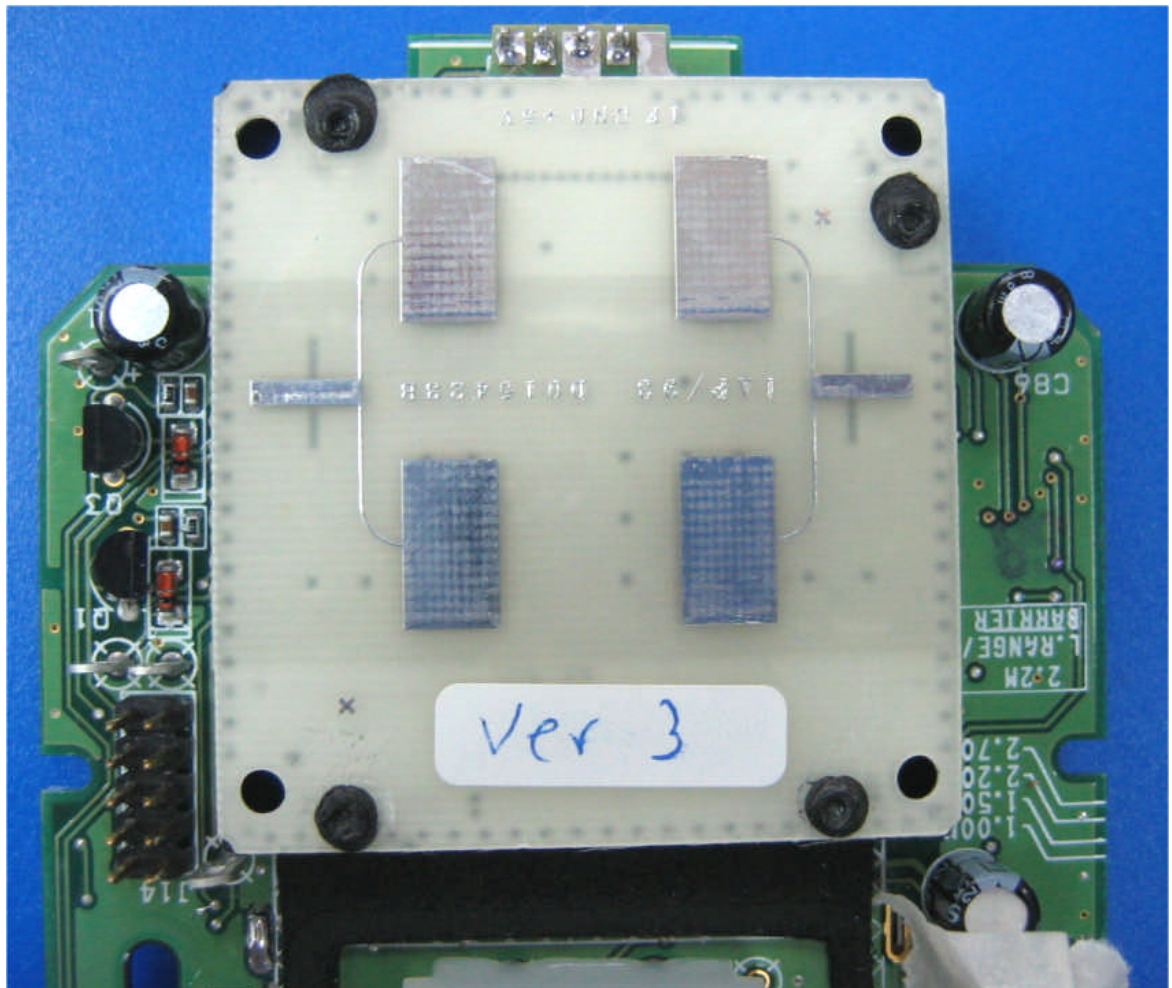
Photograph No.3
General view of the main PCB with RF module including integral antenna



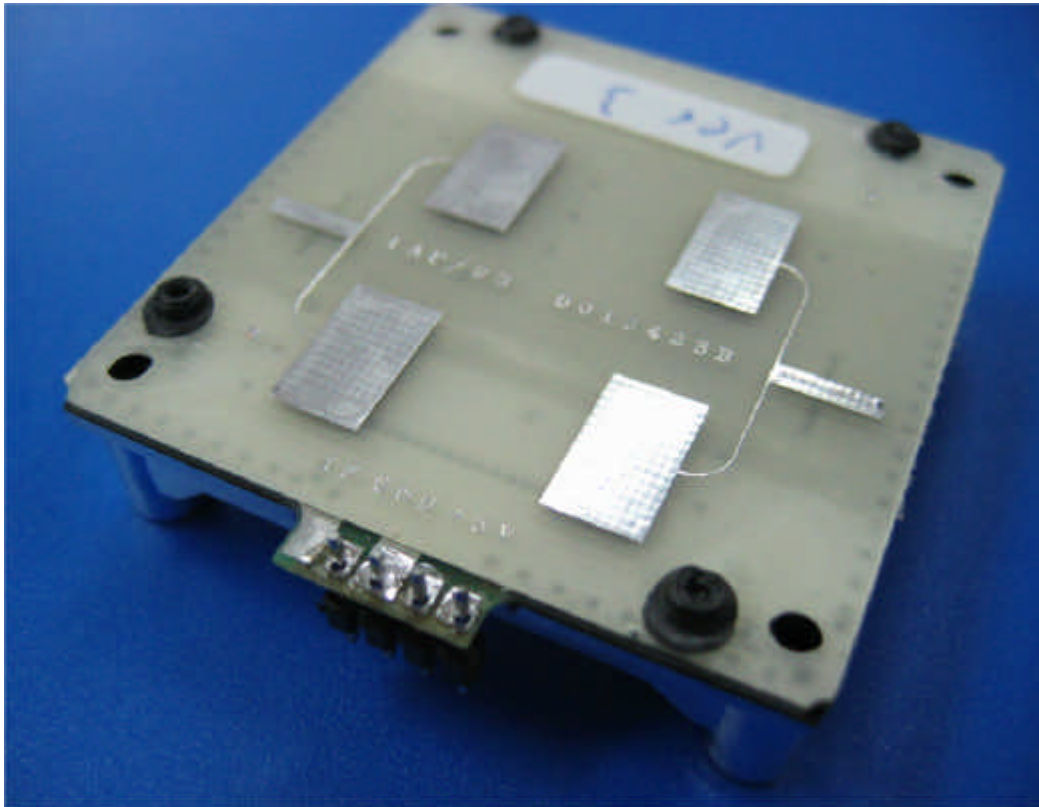
Photograph No.4
Main PCB without RF module



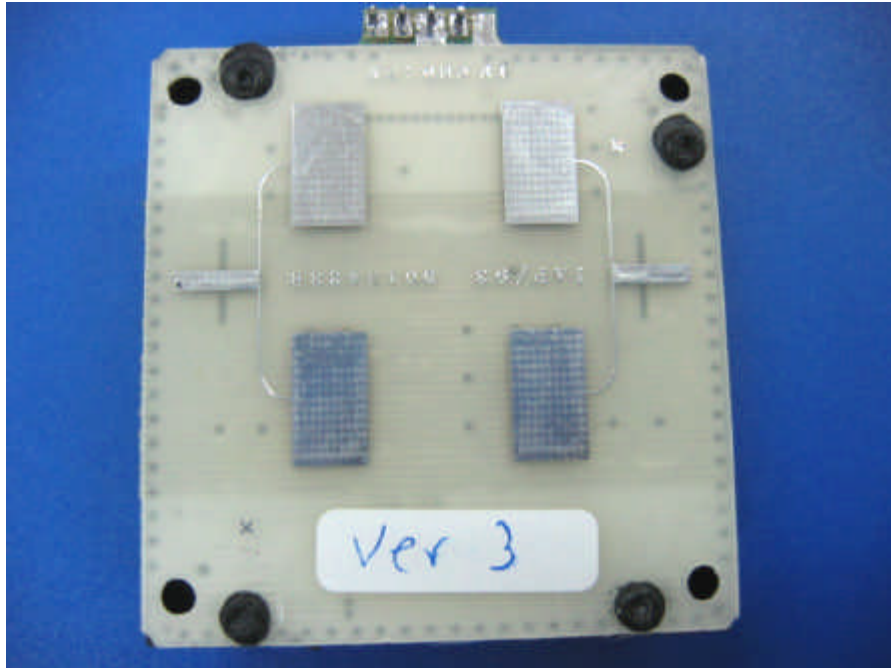
Photograph No.5
RF module with antenna close view



Photograph No.6
RF module general view



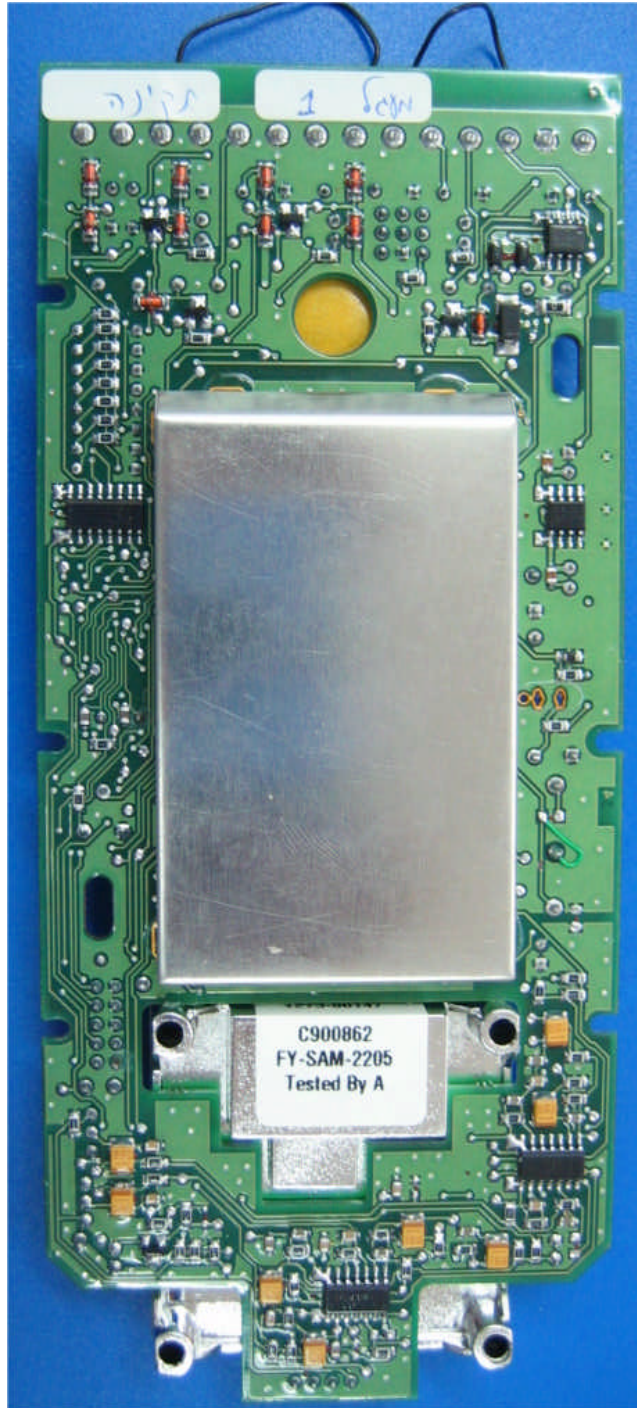
Photograph No.7
RF module front side view



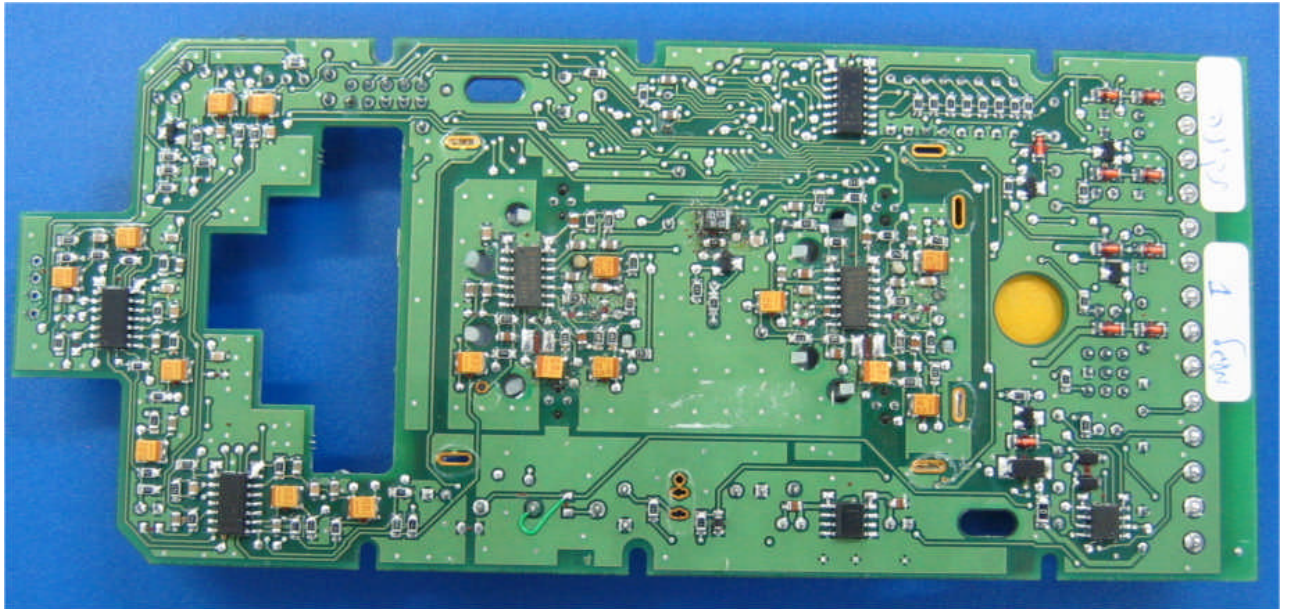
Photograph No.8
RF module rear side view



Photograph No.9
Second side of the main PCB, general view with shielding and RF module rear side



Photograph No.10
Second side of the main PCB, view without shielding



Photograph No.11
Main PCB, close view without shielding

