

Remote Control: Transmitter

The remote control transmitter has three buttons. Press and hold the On/Off button to turn the swim current on. Press and hold the Up or Down button to adjust the current to the desired speed. Press and hold the On/Off button while the current is on to turn off.

This device complies with Part 15 of the FCC Rules. Operation is subject to the following two conditions:

- (1) This device may not cause harmful interference, and
- (2) This device must accept any interference received, including interference that may cause undesired operation.

WARNING: Changes or modifications not expressly approved by the party responsible for compliance could void the user's authority to operate the equipment.

MODEL: EP-1g - 230 VAC, 24 AMPS, 60 Hz.

IP25 RATED RAINPROOF (TYPE 3R) ENCLOSURE SUITABLE FOR INDOOR OR OUTDOOR USE

THIS UNIT REQUIRES 30 AMP 230 VOLT AC, SINGLE PHASE WITH NEUTRAL, 60 Hz. (THREE COPPER WIRES PLUS GROUND)

Hydraulic Power Unit

5 HP 21 FLA Amps 230 VAC 60 Hz

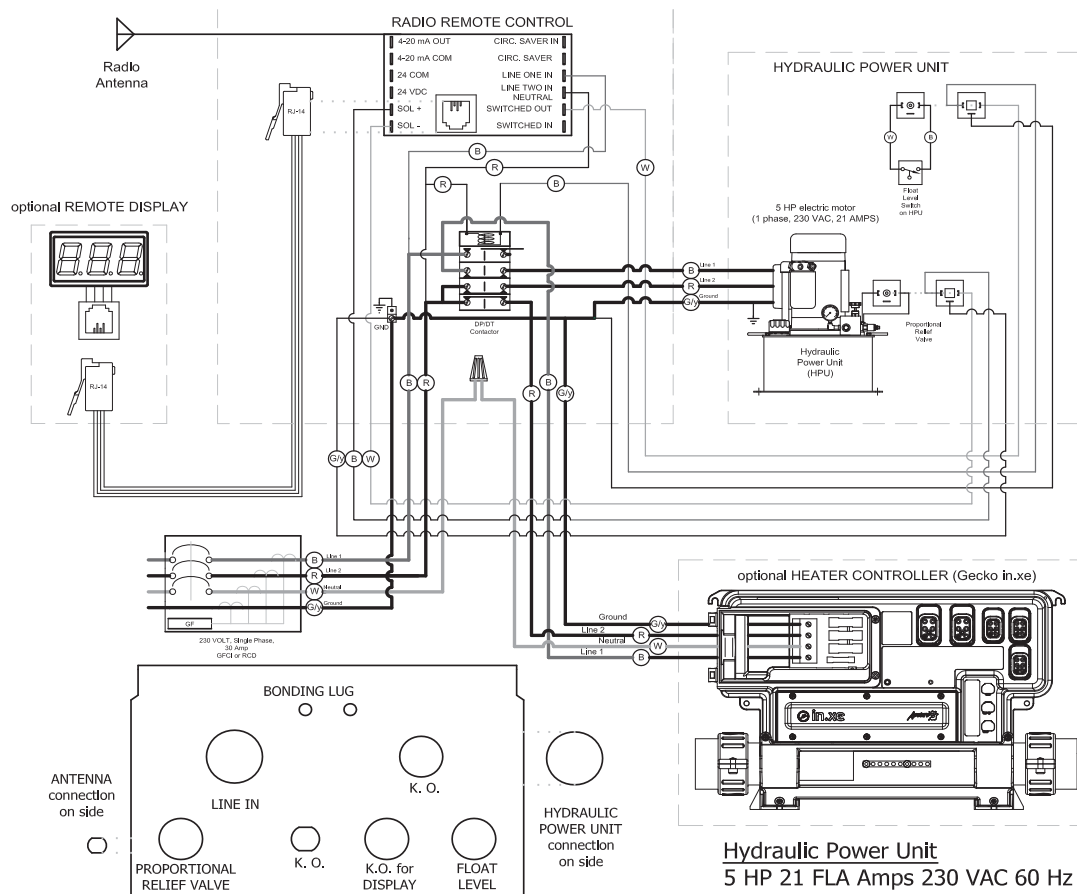
6 HP 23 FLA Amps 230 VAC 60 Hz

HEATER CONTROLLER (optional)

24 Amps 230 VAC 60 Hz

Controller

IMPORTANT SAFETY INSTRUCTIONS Read and follow all instructions. To reduce the risk of injury, do not permit children to use this product unless supervised at all times. This control panel must be installed according to local electric code requirements. A GFCI (Ground Fault Circuit Interrupter) or RCD (Residual Current Device) circuit breaker must be used in the service panel and tested before each use in accordance with the manufacturer's instructions. The line-in wire whip should be connected to a safety disconnect in sight of all equipment, but at least 5 feet away from the pool. This controller must be installed at least 5 feet away from the pool and all conductors must not share boxes, conduits or enclosures with non GFCI or RCD protected wiring. All wires must be copper. Box must be mounted with conduit down.



Hydraulic Power Unit

5 HP 21 FLA Amps 230 VAC 60 Hz

6 HP 23 FLA Amps 230 VAC 60 Hz

HEATER CONTROLLER (optional)

24 Amps 230 VAC 60 Hz