



GN-AP101B
Wireless Access Point
User Guide

<http://www.gigabyte.com.tw>

Rev.1.1

Safety, Care and Regulatory Information

Important safety instructions

Read and follow all instructions marked on the product and in the documentation before you operate your system. Retain all safety and operating instructions for future use.

- The product should be operated only from the type of power source indicated on the rating label.
- The plug-socket combination must be accessible at all times because it serves as the main disconnecting device.
- All products shipped with a three-wire electrical grounding-type plug only fits into a grounding-type power outlet. This is a safety feature. The equipment grounding should be in accordance with local and national electrical codes. The equipment operates safely when it is used in accordance with its marked electrical ratings and product usage instructions
- Do not use this product near water or a heat source.
- Set up the product on a stable work surface or so as to ensure stability of the system.
- Openings in the case are provided for ventilation. Do not block or cover these openings. Make sure you provide adequate space around the system for ventilation when you set up your work area. Never insert objects of any kind into the ventilation openings.
- To avoid electrical shock, always unplug all power cables and modem cables from the wall outlets before removing covers.
- Allow the product to cool before removing covers or touching internal components.
- Use only the power cord and batteries indicated in this manual. Do not dispose of batteries in a fire. They may explode. Check with codes for possible special disposal instructions.

Precautions for Products With Modems, Telecommunications, or Local Area Network Options

Observe the following guidelines when working with options:

- Avoid using a telephone (other than a cordless type) during an electrical storm. There may be a remote risk of electric shock from lightning.
- **CAUTION** - To reduce the risk of fire, use only No. 26 AWG or larger telecommunication line cord.
- Do not plug a modem or telephone cable into the network interface controller (NIC) receptacle.

- Disconnect the modem cable before opening a product enclosure, touching or installing internal components, or touching an uninsulated modem cable or jack.
- Do not use a telephone line to report a gas leak while you are in the vicinity of the leak.
- Do not use this product near water, for example, near a bathtub, washbowl, and kitchen sink or laundry tub, in a wet basement or near a swimming pool.

Federal Communications Commission (FCC) Statement

FEDERAL COMMUNICATIONS COMMISSION: This device complies with Part 15 of the FCC Rules. Operation is subject to the following two conditions:(1) this device may not cause harmful interference, and (2) this device must accept any interference received, including interference that may cause undesired operation.

Note: This equipment has been tested and found to comply with the limits for a Class B digital device, pursuant to Part 15 of the FCC Rules. These limits are designed to provide reasonable protection. This equipment generates, uses and can radiated radio frequency energy and, if not installed and used in accordance with the instructions, may cause harmful interference to radio communications. However, there is no guarantee that interference will not occur in a particular installation. If this equipment does cause harmful interference to radio or television reception, which can be determined by turning the equipment off and on, the user is encouraged to try to correct the interference by one or more of the following measures:

- Reorient or relocate the receiving antenna.
- Increase the separation between the equipment and receiver.
- Connect the equipment into an outlet on a circuit different from that to which the receiver is connected.
- Consult the dealer or an experienced radio/TV technician for help.

Changes or modifications not expressly approved by the party responsible for compliance could void the user's authority to operate the equipment.

FCC Radiation Exposure Statement: This equipment complies with FCC radiation exposure limits set forth for an uncontrolled environment. In order to avoid the possibility of exceeding the FCC radio frequency exposure limits, human proximity to the antenna shall not be less than 20cm (8 inches) during normal operation. Proposed RF exposure safety information to include in User's Manual.

/ For European users only /

European Community Directive Conformance Statement

This product is in conformity with the protection requirements of EC Council Low Voltage Directive (Safety) 73/23/EEC, EMC Directive 89/336/EEC on the approximation of the laws of the Member States relating to electro-magnetic compatibility.

Contents

1. INTRODUCTION.....	1
1-1. CONTENTS OF YOUR SHIPMENT	1
1-2. PHYSICAL INTERFACE	2
1-3. ACCESS POINT LED INDICATORS	2
1-4. KEY FEATURES	3
1-5. SPECIFICATIONS	3
2. INSTALLATION	4
3. ACCESS POINT MANAGER.....	7
3-1. INSTALLING THE ACCESS POINT MANAGER.....	7
3-2. USING THE ACCESS POINT MANAGER	12
4. UPGRADE FIRMWARE.....	24
5. UNINSTALL AP MANAGER UTILITY	26

1. Introduction

GN-AP101B access point makes wireless networking a practical reality in more places, more companies and more environments than ever. Thanks to robust, secure, industry-standard 802.11b wireless networking, you can build networks that were previously far too expensive or too complex.

The Gigabyte Wireless system can connect PCs throughout your premises without the headache of running cable. It's an effective way to tie together laptop PCs, mobile workers, floating workers, temporary workers and offices. It's the ideal way to provide Internet and Ethernet connectivity to lecture halls, warehouses, retail sales floors, gymnasiums and factories, including large spaces where radio transmission echo has previously been a problem.

1-1. Contents of Your Shipment

Before the installation procedures, please ensure the components are not damaged during the shipping. The shipment of the GN-AP101B includes:

- One GN-AP101B Wireless Access Point
- One AC Power Adapter
- One Installation CD with the AP Manager and User Guide Soft Copy
- One User Guide
- One RJ45 cable

Please contact your local distributor or authorized reseller immediately for any missing or damaged components. If you require returning the damaged product, you must pack it in the original packing material or the warranty will be voided.

1-2. Physical Interface

- ♦ **One Ethernet LAN Port**

RJ-45, Auto-sensing and Auto-MDI/MDIX for 10/100M Ethernet LAN connection

- ♦ **Init Button**

Initial reset (Init to factory default)

- ♦ **Wireless antenna**

One 2.4 GHz antenna - IEEE802.11b

- ♦ **Wireless solution**

Intersil Prism2.5

- ♦ **Power**

1-3. Access Point LED Indicators

- ♦ **Power LED** (Green light)

The Power LED lights up when power is on.

- ♦ **Wireless LED** (Green light)

On	The wireless function is acting.
Flicker	Data is being transmitted/received.

- ♦ **LAN LED** (Link/Act: Green light)

On	The LED will light up if connected to a link partner.
Flicker	Data is being transmitted/received.

- ♦ **Status LED**

Green light	When reset or power on.
Off	The system is ready.
Red light	System error

1-4. Key features

- ◆ Compatible with IEEE 802.11b Standard
- ◆ Auto data rate for 11/5.5/2/1Mbps
- ◆ 802.1D transparent Bridge
- ◆ Operation Channels for US/Canada, ETSI, and Japan.
- ◆ Support Nonpublic SSID
- ◆ Firmware update through AP manager By TFTP
- ◆ Roaming support
- ◆ MDI/MDIX: Auto crossover detect
- ◆ DHCP Client support
- ◆ Support Passphrase string Key. 40(64), 128 bits WEP privacy
- ◆ Support MAC filter

1-5. Specifications

Feature	Value
Communication Standard	IEEE802.11b Wireless LAN IEEE 802.3 10 Base-T Ethernet IEEE 802.3u 100 Base-TX Fast Ethernet IEEE 802.3x Flow Control IEEE 802.3 Auto Negotiation
Protocol Support	TCP/IP, DHCP, UDP, ICMP, ARP.
CPU	Arm9 32 bit. RISC controller
Interfaces	Ethernet 10/100 Mbps LAN port with Auto-negotiation and auto-MDIX function
Network Operation System	Win95/98/2000/NT/XP, Unix, Linux
Operation System for AP Manager	Win95/98/2000/NT/XP
Power Supply	5V DC 2A
Operation Environment	Operation Temperature : 0 ~ 40 °C Storage Temperature : -20 ~ 65 °C Humidity: 5%~90% (Non-condensing).
Dimension (W x L x H)	110 mm x 160mm x 25 mm (device only)
Weight	Gross Weight 115 ± 5 g

2. Installation

Follow these steps to install the GN-AP101B Wireless Access Point.

1. Choose a proper place for GN-AP101B Wireless Access Point. In general, the best location is at the center of your wireless coverage area, within line of sight to all wireless devices. Keeping clear of metal obstructions and away from direct sunlight.
2. Place the GN-AP101B in the desired location. Normally, the higher you place the antenna, the better the performance will be. The antenna's position enhances the receiving sensitivity.
3. Attach one end of an RJ-45 Ethernet cable to the GN-AP101B and attach the other end to a network hub, switch, router, or patch panel (possibly on a wall).
4. Attach one end of the AC power adapter to the GN-AP101B and the other end to a power outlet. (Note: Only use the power adapter supplied by Gigabyte in the product package. Using a different adapter may result in product damage.)

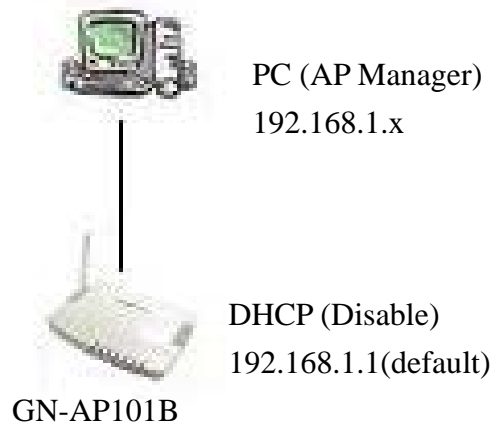
For the average home, signal range should not be an issue. If you experience low or no signal strength in areas of your home that you wish to access, consider positioning the Access Point in a location directly between the computers with wireless adapters. Additional Access Points can be connected to provide better coverage in rooms where the signal does not appear as strong as desired.

There are two installation mode for your reference as follow :

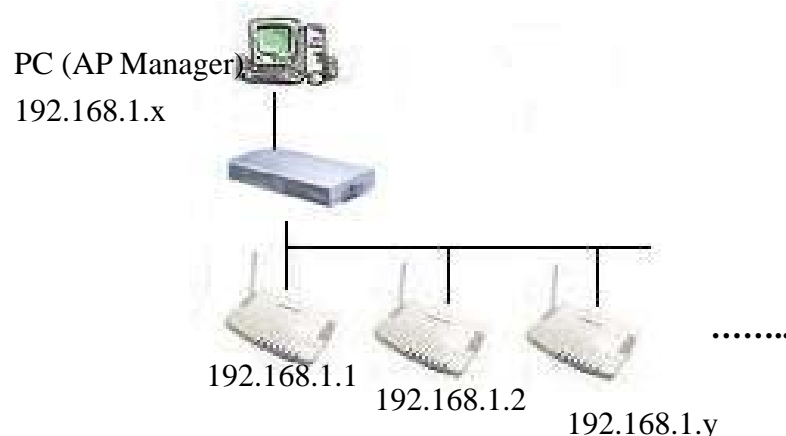
Static IP address

Method 1

If you are **Not** using a DHCP server in your network, you can configure the AP by connecting to the computer directly.

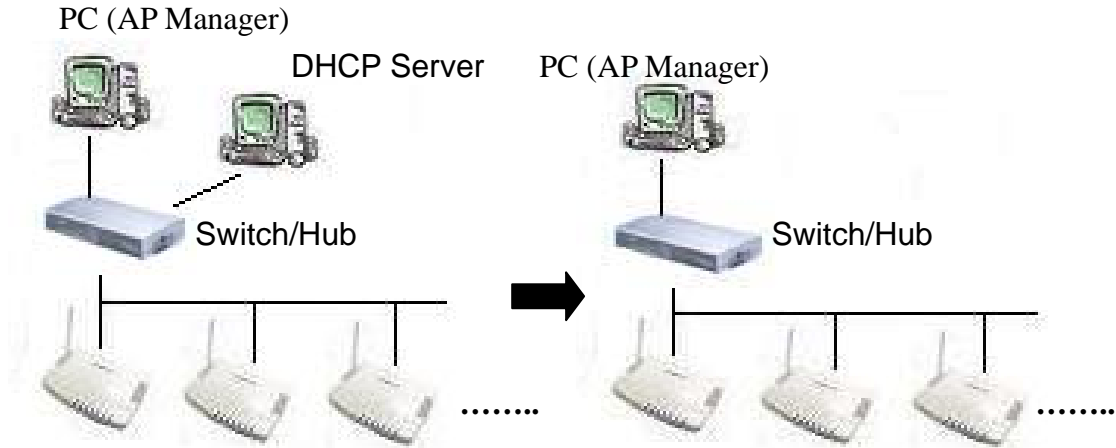


1. You will need to assign a Static IP Address to the computer that you are using to configure the GN-AP101B on the **same subnet**. For instance, the default IP address of the GN-AP101B is 192.168.1.1 and the subnet mask 255.255.255.0. You can enter IP address 192.168.1.20 (assuming that it is not already assigned to another network device), subnet mask 255.255.255.0 to your computer.
2. Connect to the GN-AP101B one by one and assign a static IP to each GN-AP101B. For example, 192.168.1.2 or 192.168.1.y, etc. (If the IP address of your network is 10.1.5.x then your GN-AP101B can be assigned to 10.1.5.y.)
3. Make sure that every GN-AP101B has a unique IP.
4. After all GN-AP101B has been configured successfully, then you can use AP Manager to control/monitor all GN-AP101B network.

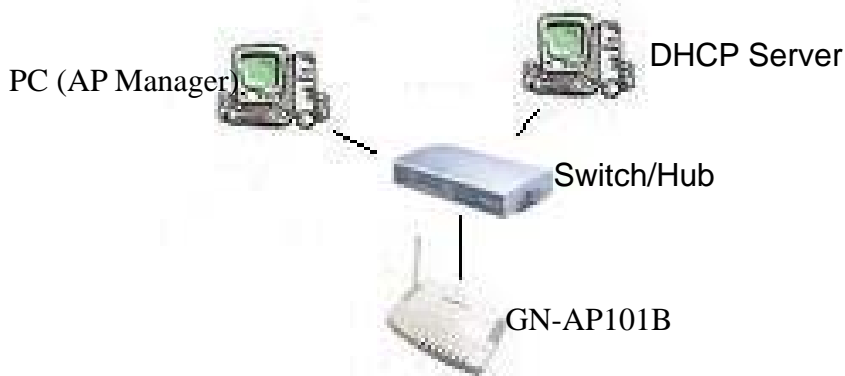


Method 2

If require to setup as many GN-AP101B at the same time. You can setup a DHCP Server and let it assign IP to all the GN-AP101B so it has its own unique IP address. After the setup is finished, and then remove or disabled DHCP Server at last. Now, you can use the AP Manager to find all GN-AP101B in your network, and then setup the N-AP101B as static IP address one by one. Notice: After assign static IP address to every GN-AP101B, be sure to set the PC (AP Manager) to the **same subnet**.



Obtain IP Address Automatically - DHCP Server Enabled



If you are using a DHCP server in your network, you can connect a DHCP server with the GN-AP101B and an AP Manager through a switch/hub. The IP address of the GN-AP101B should be configured to “Obtain an IP address automatically” (which is default setting). The DHCP server will assign the IP address to the GN-AP101B. The PC (AP Manager) should use the IP on the **same subnet** as the GN-AP101B. Or, you can configure the PC (AP Manager) to “Obtain an IP address automatically” and assign IP by the same DHCP server.

3. Access Point Manager

The Gigabyte Access Point Manager is used to configure Gigabyte Access Points.

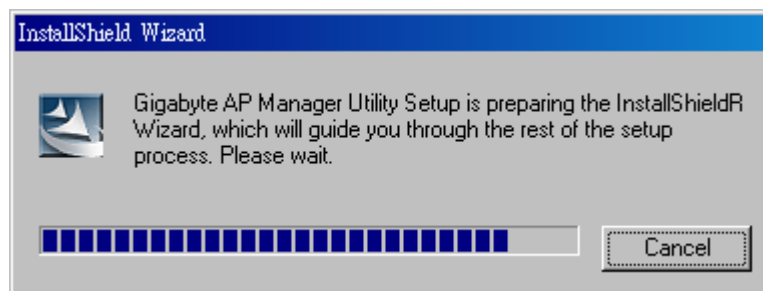
Note: *The performance of wire line link is better than wireless link between the AP Manager and each Access Point. To use the wire line link to manage the GN-AP101B is recommended.*

3-1. Installing the Access Point Manager

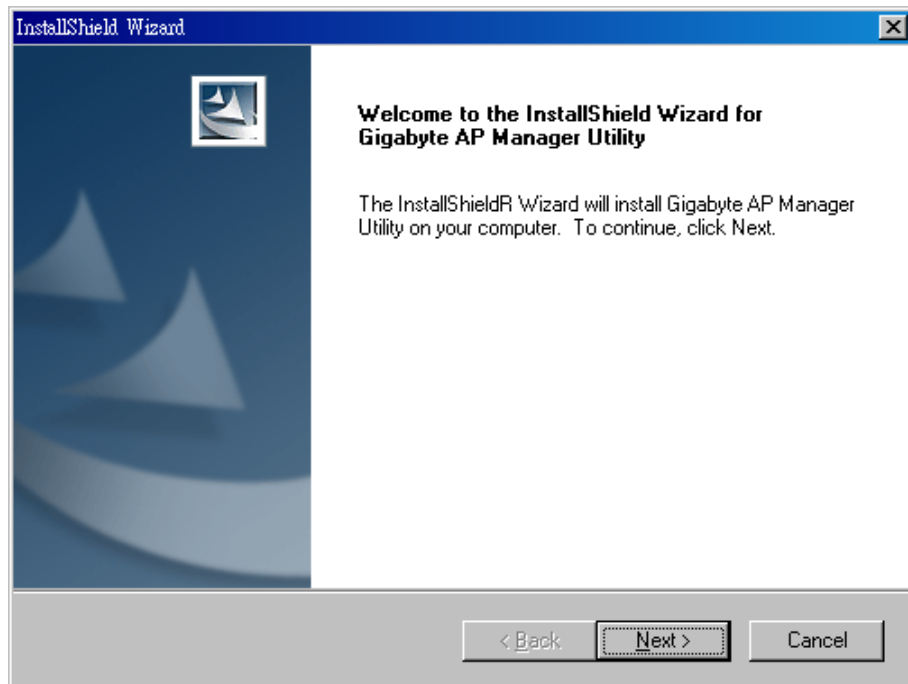
Please follow these steps to install the GN-AP101B AP Manager in the Windows.

Step1. Insert the GN-AP101B installation CD and click Install **Gigabyte AP Manager** on the CD autorun screen.

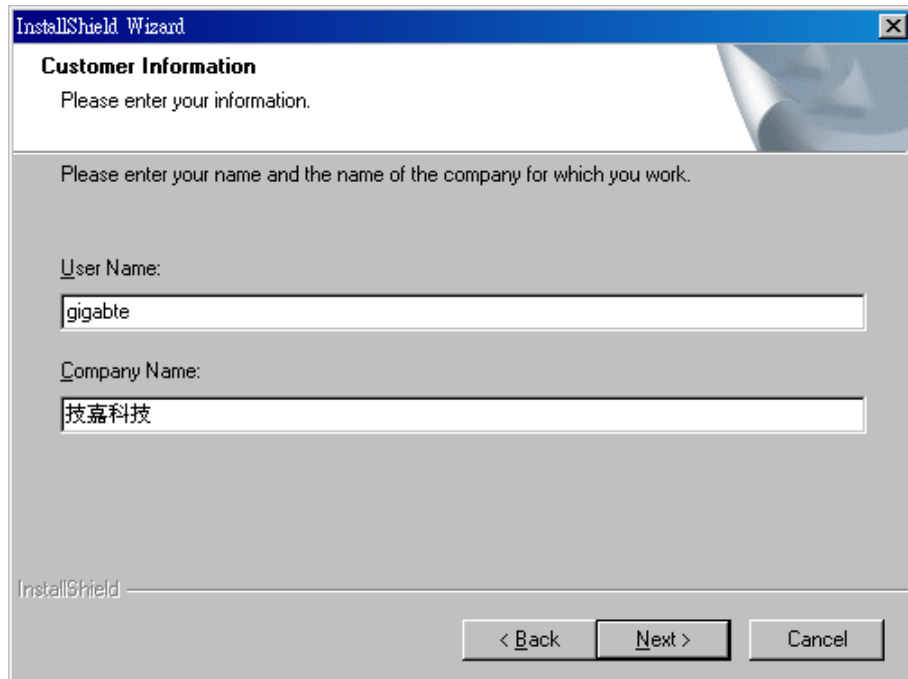
Step2. Please wait a while!!



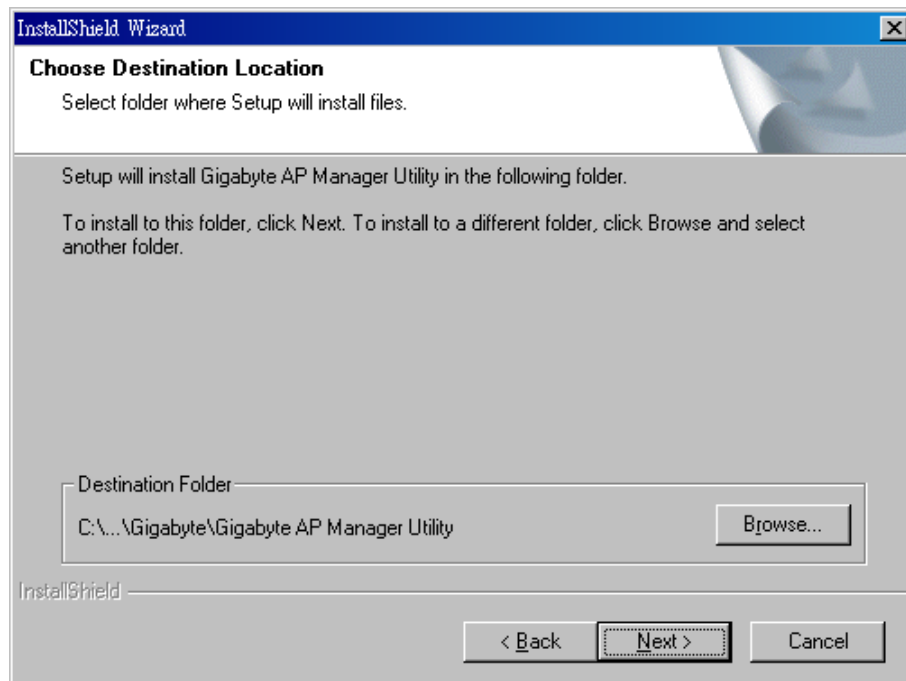
Step3. Click “Next”.



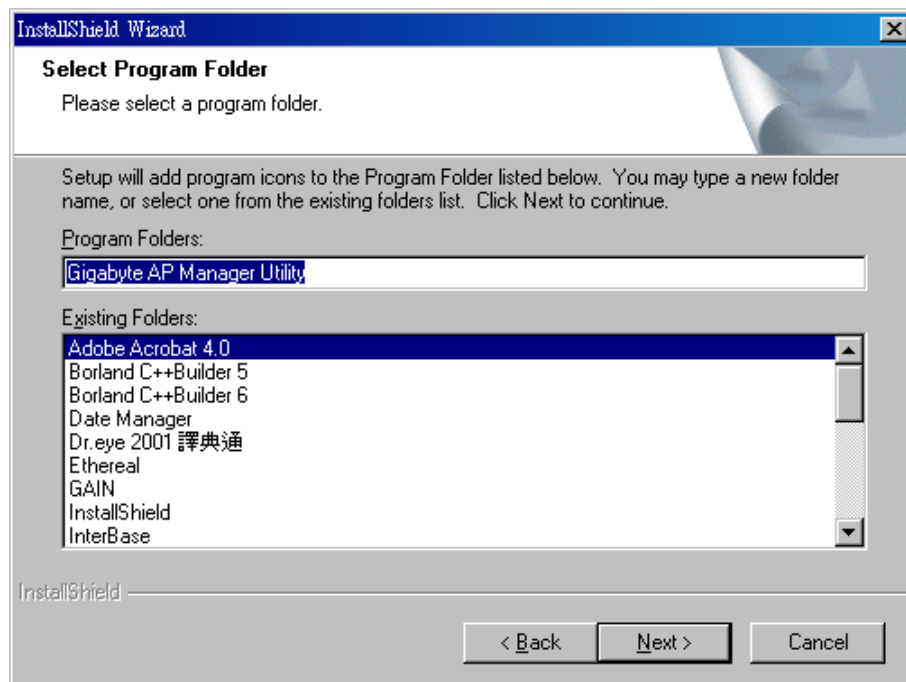
Step4. Type the User Information then click “Next”.



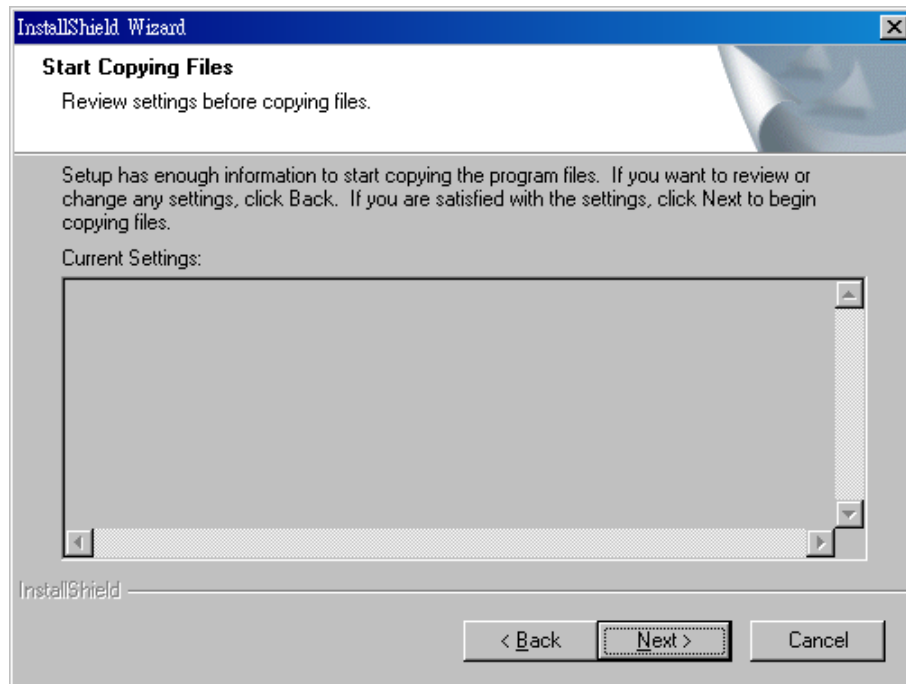
Step5. Click “Next” to accept the default directory or “Browse” to another location.



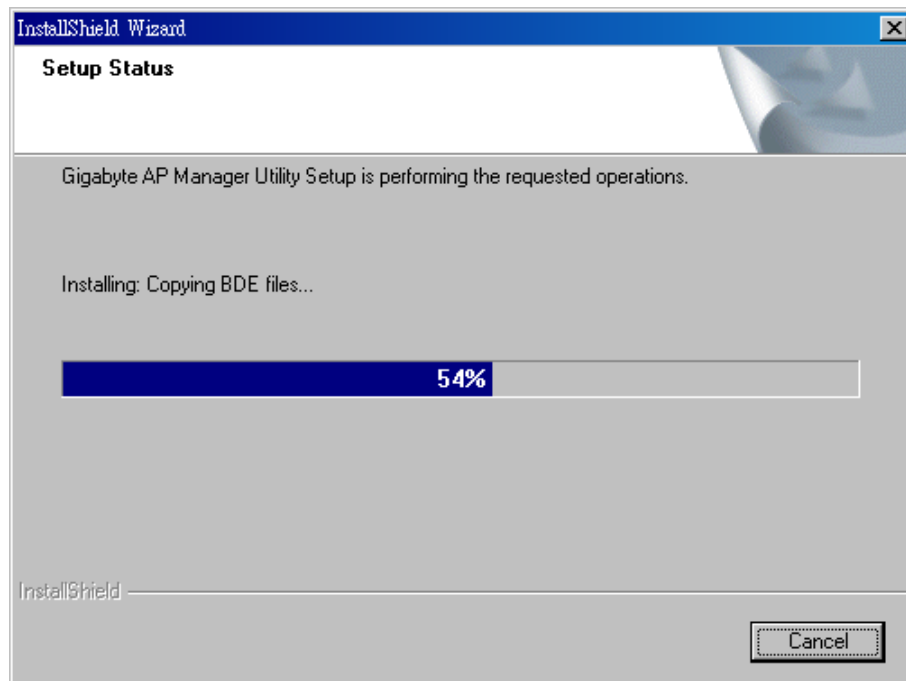
Step6. Click “Next”.



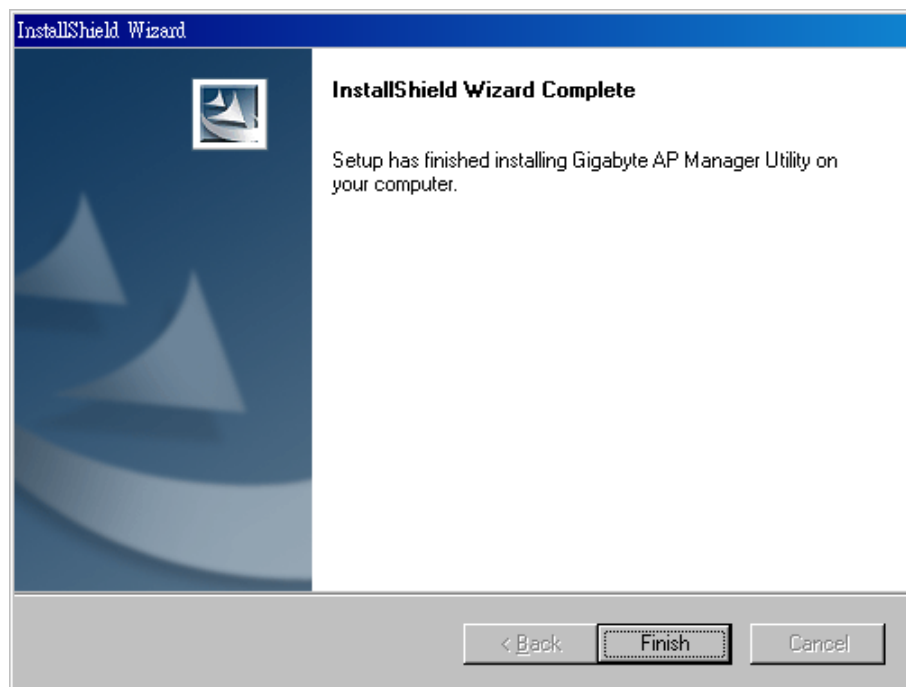
Step7. Click “Next”.



Step8. Please wait a while.



Step9. Click “Finish” to complete setup.




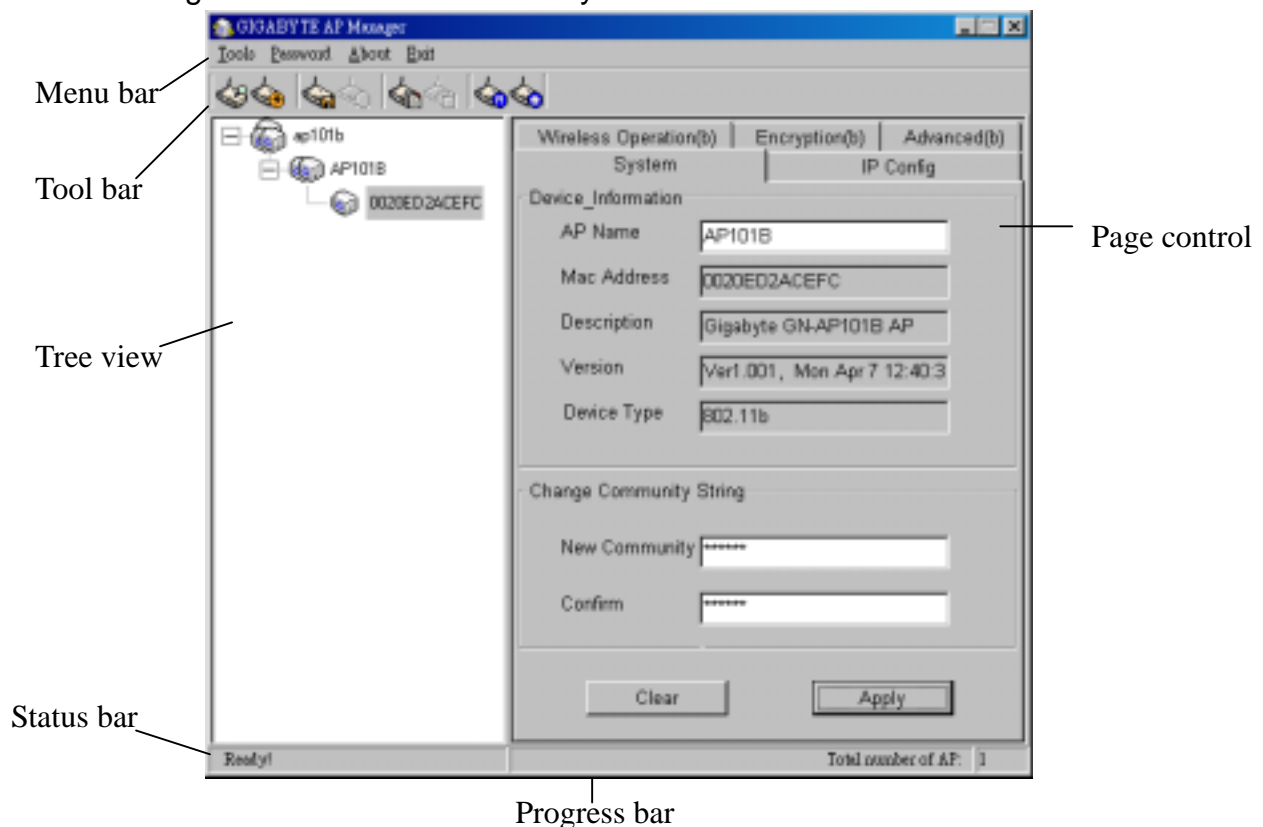
3-2. Using the Access Point Manager

You can launch Gigabyte AP Manager through **Start \ Programs \ Gigabyte AP Manager Utility \ Gigabyte AP Manager**.

Enter the default password “**admin**” and click “OK”.



It will automatically search for GN-AP101B Access Points on the **same subnet** when you open the Gigabyte AP Manager. You may click the icon  to searching for Access Points manually.



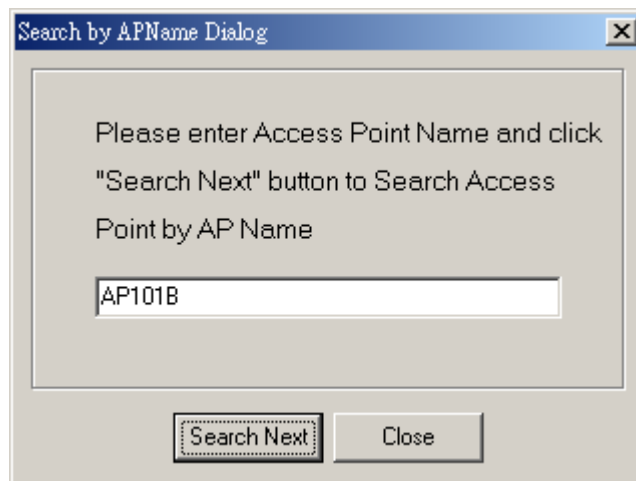
■ Tree structure

ESSID (ap101b)
├── AP Name (AP101B)
│ └── MAC Address (0020ED001700)

■ Menu bar

Tools	Allow you to “ Search ” for AP by ESSID, AP Name, MAC Address, and IP Address and “ Connect to AP by IP ”. And allow you to “ Save ”, “ Load ” the AP configuration and “ Copy ”, “ Paste ” the configuration at the current page. Besides, it includes both “ System Reboot ” and “ Load Default ”.
Password	Allow you to change the AP Manager password and set the SNMP community string.
About	An online help and the AP Manager version.
Exit	Exit the AP Manager.

Note: When you search for AP by AP Name (Tools->Search->By AP Name). You can press the “search next” to continue to search the same name of AP.

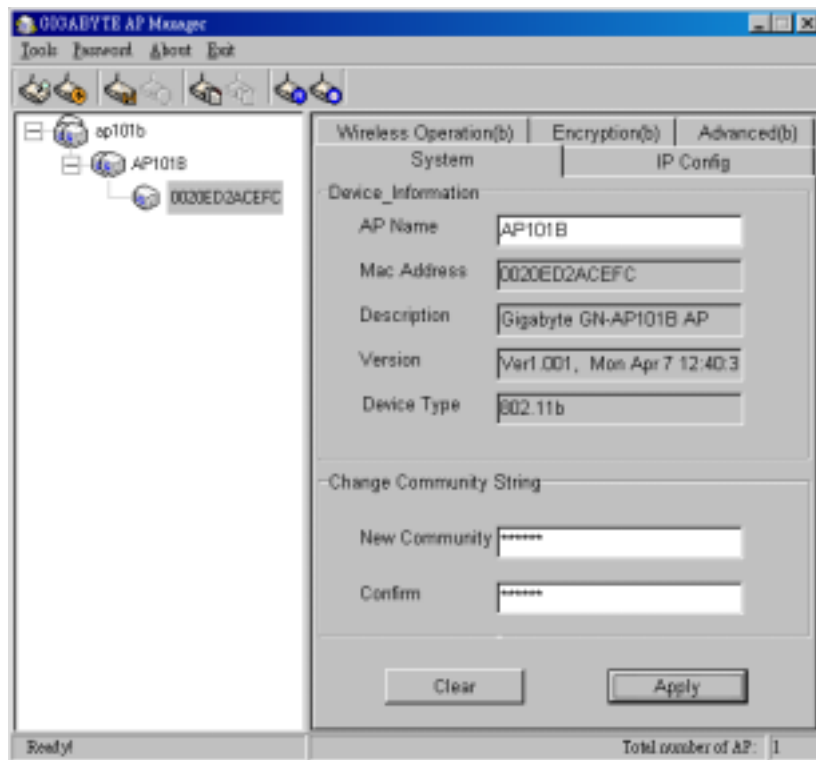


■ **Tool bar**

 Find Access Point	 Connect To AP By IP
 Save AP Configuration	 Load AP configuration
 Page Copy	 Page Paste
 System Reboot	 Load Default

- Find Access Point: Find all AP in the same subnet.
- Save AP Configuration: Save all setting of the AP to a temp file.
- Load AP Configuration: Load the setting of the temp file that you saved before to the current AP.
- Page Copy: Copy the setting of the current page.
- Page Paste: Paste the setting you has copied to the current page.(You can paste the setting of AP1 to AP2 at the same tab page.)
- System Reboot: Reboot the Access Point.
- Load Default: Set the Access Point to the manufacture default.
- Connect To AP By IP: If you want to manage the AP in the different subnet, use this function and key in the IP.

System Page



The System Page displays the Device_Information and the Change Community String function.

■ Device_Information

The Device_Information include the AP name, MAC address, device description, the version information and the device type. You can change the AP Name to whatever unique name, which can represent this AP.

■ Change Community String

This function can let you change the community string to the AP. You can change a new community string on purpose to prohibit other AP Manager access and manage your AP. After you change the community string to AP, you need to do two following actions.

1. Use *Password->Set Community String* on the Menu Bar to set the community string to the AP manager. The AP Manager and the AP should have the same community string. Otherwise the AP Manager will not be able to find the AP with different community string
2. Please memorize the community string or write it down at somewhere.

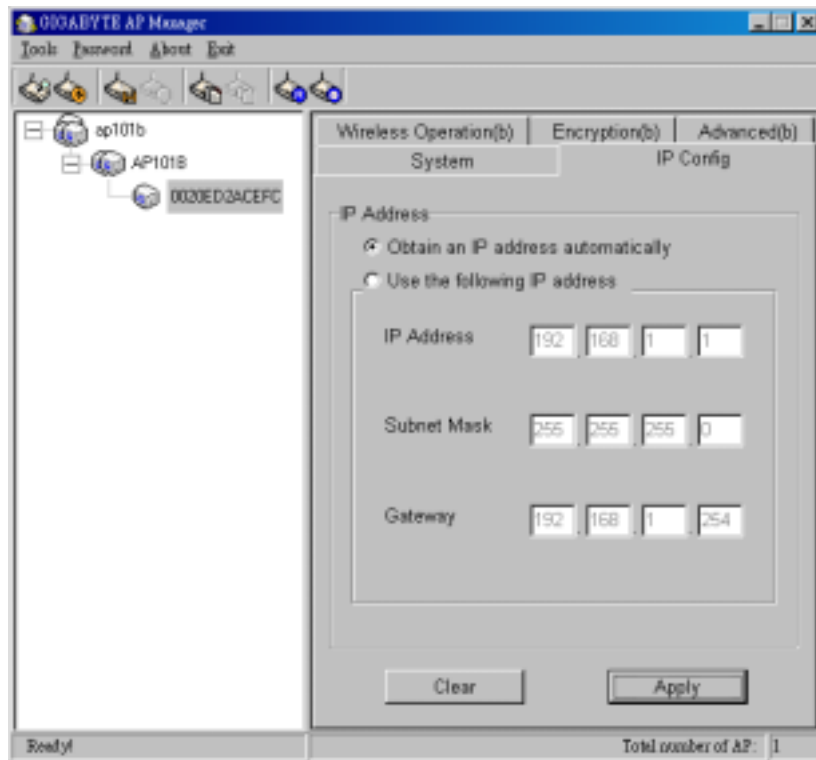


Init button

In case you forget the community string, you have to press the AP init button and then the AP setting (include community string) will be restore to default value.

Note: *The SNMP community string defines the relationship between an SNMP manager system (AP Manager) and the agent systems (all APs). This string acts like a password to control the AP Manager to access the AP. The default value of the community string is “public”. You can change the community string of AP Manager by using Password->Set Community String on the Menu Bar.*

IP Config Page



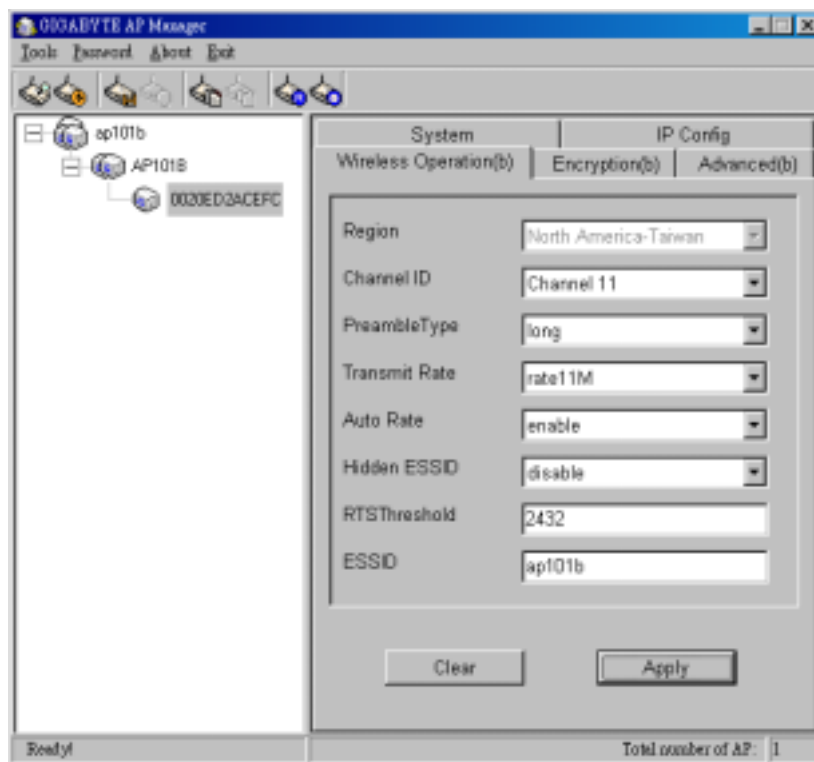
■ Obtain an IP address automatically

You can check this selection to get IP address from the DHCP server automatically in your network.

■ Use the following IP address

You can check this selection to assign IP address by yourself. The default IP address is 192.168.1.1 and the subnet mask is 255.255.255.0. Please make sure the assigned IP address is unique in your network. After you change the IP address of the AP, please also change the PC's (AP Manager) IP address to the **same subnet**. And then click the "Find Access Point" icon; AP manager will search the AP in the network.

Wireless Operation Page



Normally, you can have the wireless works smoothly even you didn't change any item in this page.

■ Region

Because of the different region has a different open channel regulation, please check whether the default region value is your local area. If it did not appear properly region please contact your local distributor or authorized reseller immediately.

■ Channel ID

Please choose the channel, which you can get best performance. Normally, it doesn't need to change. The default value is channel 11.

■ Preamble Type

The preamble field shall be provided so that the receiver can perform the necessary operations for synchronization. Under this option two setting are possible: "Long" or "Short". The default value is "Long".

■ Transmit Rates

You can select one of the rates among 1M, 2M, 5.5M and 11M based on your need. The default value is "11M".

■ Auto Rate

In this item you can select either “enable” or “disable”. The default value is “enable”.

Enable: If the selection is “enable”, the transfer rate will automatically change to the optimum rate allowed. The range of auto-change will base on the setting of “Transmit Rate”.

Transmit Rate setting:

11M: range is among 1M, 2M, 5,5M and 11M

5.5M: range is among 1M, 2M and 5,5M

2M: range is between 1M and 2M

1M: no auto-change. The transmit rate is fixed at 1M.

Disable: There is no transfer rate auto-change. The transfer rate will be defined by the “Transmit Rate” column.

■ Hidden ESSID

This setting allows you to hide the ESSID in wireless transmission. Those who don't know the ESSID will be able connect to the AP. The default value is “disable”.

■ RTS Threshold

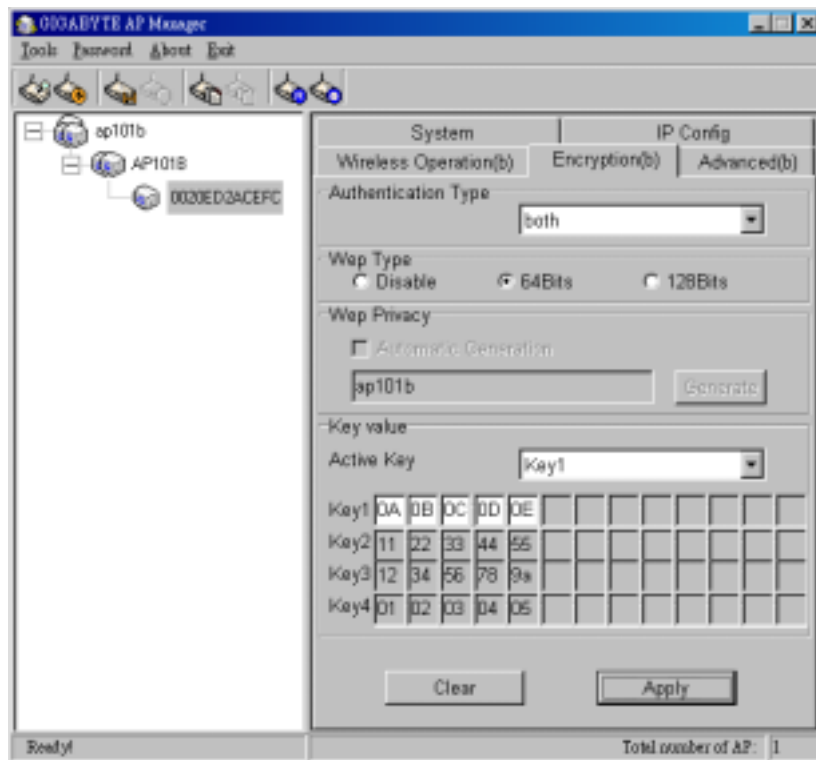
This value should remain at its default setting of 2432. Should you encounter inconsistent data flow, only minor modifications are recommended. The setting range is 0 ~ 3000.

■ ESSID

The ESSID or SSID is the name represent the AP in the wireless network. The ESSID of all AP in your network should set to identical for the mobile client can roam between access points. This ESSID string is case sensitive of up to 32 ASCII characters.

Verify the desired setting and then click the “**Apply**” button to set the value into access point.

Encryption Page



This page is the security configuration of the wireless connection. WEP (Wired Equivalent Privacy) is a data privacy mechanism based on a 64/128-bit shared key algorithm, as described in the IEEE 802.11 standard. When the “Disable” is selected there is no WEP encryption. When either “64bits” or “128bits” selected there is encrypted data transfer to prevent unauthorized user to access the wireless network.

■ Authentication Type.

You may choose between “Open System”, “Shared Key”, and “Both”. The Authentication Type default is set to “Both”.

Open System, in which the sender and the recipient do NOT share a secret key. Each party generates its own key-pair and asks the receiver to accept the randomly generated key. Once accepted, this key is used for a short time only. Then a new key is generated and agreed upon.

Shared Key is both the sender and the recipient share a secret key.

If the “Shared Key” or “Both” option is selected, and then the option “Disable” of the WEP type will be disabled.

■ 64 (40) Bits or 128 (104) bits

There are two levels of encryption 64 bits and 128 bits. The 64 bits encryption is referenced as a lower level encryption. The 128 bits encryption is referenced as a higher level encryption.

The 64 bits WEP encryption use 40 bits as a secret key, which can controlled by user, and 24 bits as the initialize vector, which user can not control. These two portions plus together is 64 bits encryption. Some other vendor's product might refer as 40 bits encryption. It is the same thing.

The 128 bits WEP encryption use 104 bits as a secret key, which can controlled by user, and 24 bits as the initialize vector, which user can not control. These two portions plus together is 128 bits encryption. Some other vendor's product might refer as 104 bits encryption. It is the same thing.

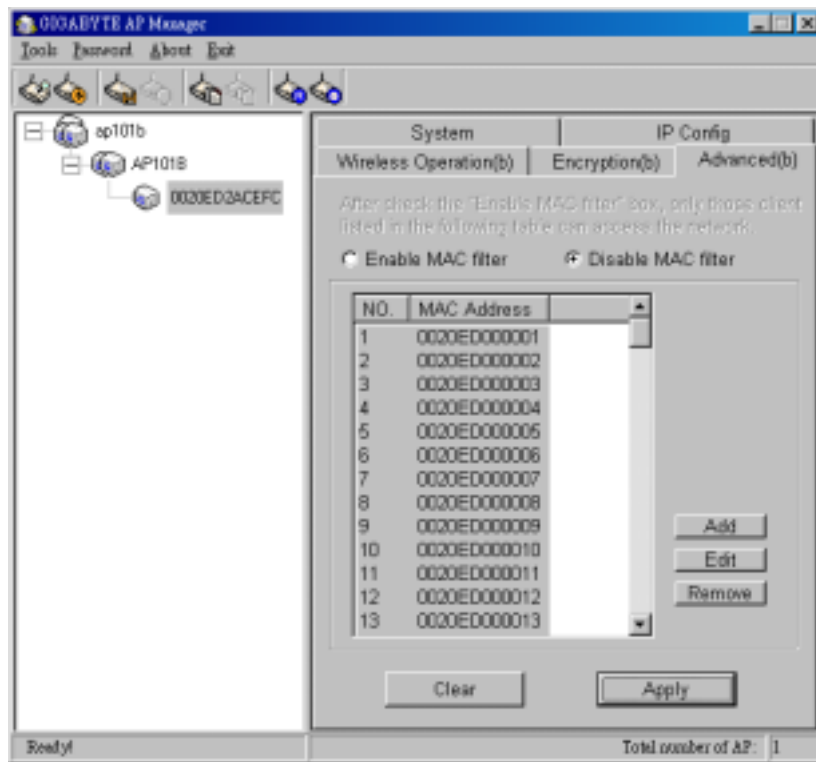
■ Automatic Generation

Check this selection can allow user to generate the WEP key based on the string user key in. This filed can key in up to 10 character.

If the "Automatic Generation" is not checked user can manually change the WEP key by key in the HEX value.

Verify the desired setting and then click the "**Apply**" button to set the value into access point.

Advance Page



For enhance the security of the wireless network, this AP provide the MAC address filtering mechanism to prevent the unauthorized user access. Check “Enable MAC filter” and key in MAC address table, then only those MAC address in the table are allowed to connect to this AP.

■ Enable MAC Filter

Choose the “Enable MAC Filter” and click the “**Add**” button to add more MAC addresses or click “**Remove**” button to delete the MAC addresses from the Authorized MAC Address table. Besides, you can click “**Edit**” button to edit the MAC address.

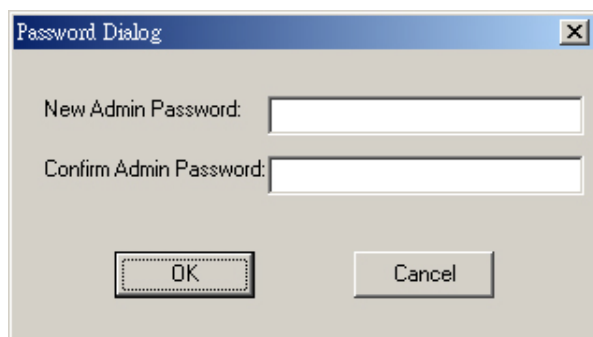
■ Disable MAC Filter

The default is “Disable MAC filter”.

Verify the desired setting and then click the “**Apply**” button to set the value into access point.

Change AP Manager Password

User can change the administration password of the AP manger to prevent other user access to the AP Manager. On the Menu Bar (Password->AP Manager Password) can invoke the password change dialog. Please enter a new admin password and confirm admin password then press "OK". You have to enter this new password to log in when you want to use the AP Manager next time.

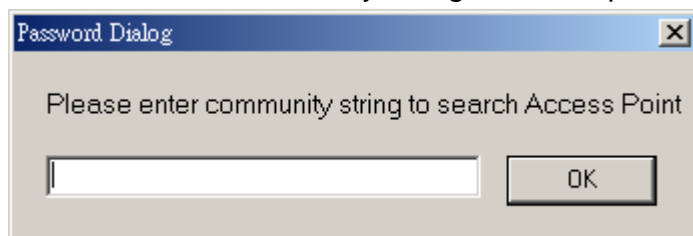


The screenshot shows a dialog box titled "Password Dialog" with a close button (X) in the top right corner. It contains two text input fields: "New Admin Password:" and "Confirm Admin Password:". Below the fields are two buttons: "OK" and "Cancel".

Set Community String

The community string defines the relationship between AP manager and the AP. This string acts like a password to control the AP Manager to access the AP. For detail description, please refer to "System Page" section.

Please enter a community string and then press "OK".



The screenshot shows a dialog box titled "Password Dialog" with a close button (X) in the top right corner. It contains a text input field and an "OK" button. The text inside the dialog reads: "Please enter community string to search Access Point".

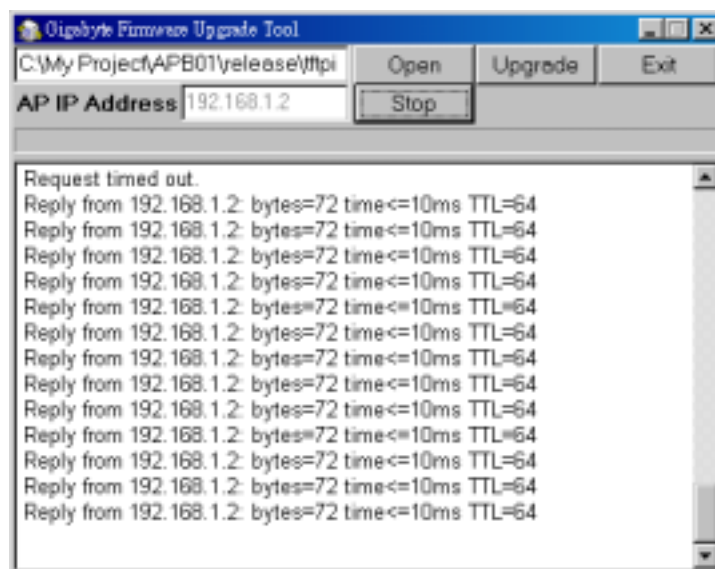
4. Upgrade Firmware

You can download the upgraded firmware version from Gigabyte website.

■ Run TFTP Program

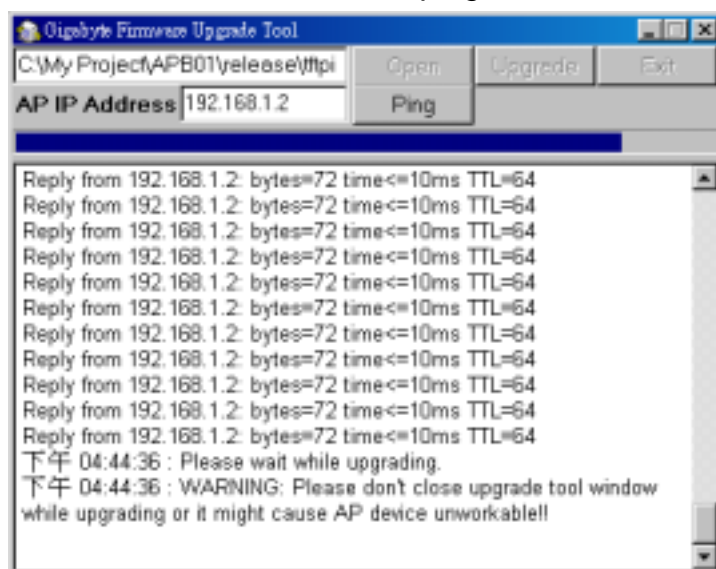
Step1. You can find the “Upgrade Tool” through **Start \ Programs \ Gigabyte AP Manager Utility \ Gigabyte AP Upgrade**.

Step2. The Gigabyte Firmware Upgrade Tool screen will appear. Please enter the “AP IP address” which you want to upgrade the firmware. You can press “**Ping**” button to verify whether the AP is online.

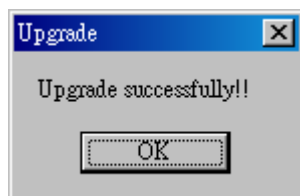


Step3. Press “**Open**” button to choose the firmware then press “**Upgrade**” button to start the firmware upgrade process.

Note: During the firmware upgrade, please DO NOT turn off the PC or AP and DO NOT unplug the Ethernet cable.



Step4. After the AP device rebooting successful, the AP firmware upgrade is completed.

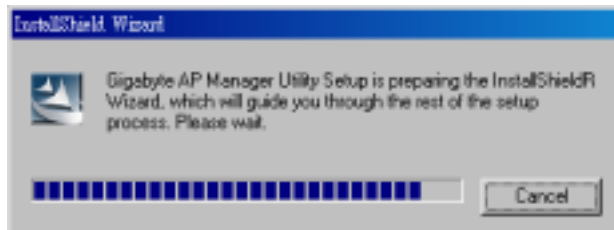


Note: Right-Click on the screen, the content menu will be displayed. You can find the online help and the version information of the firmware upgrade utility.

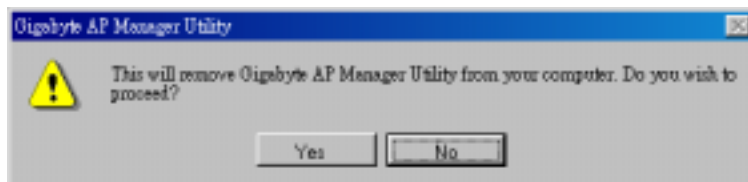
5. Uninstall AP Manager Utility

You can find the Uninstall program through **Start \ Programs \ Gigabyte AP Manager Utility **.

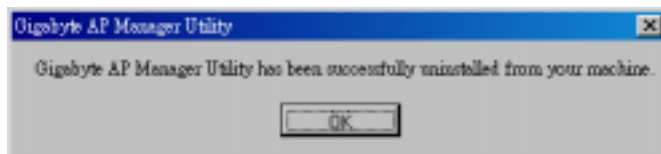
Step1. The InstallShield Wizard will appear then please wait.



Step2. Click "Yes".

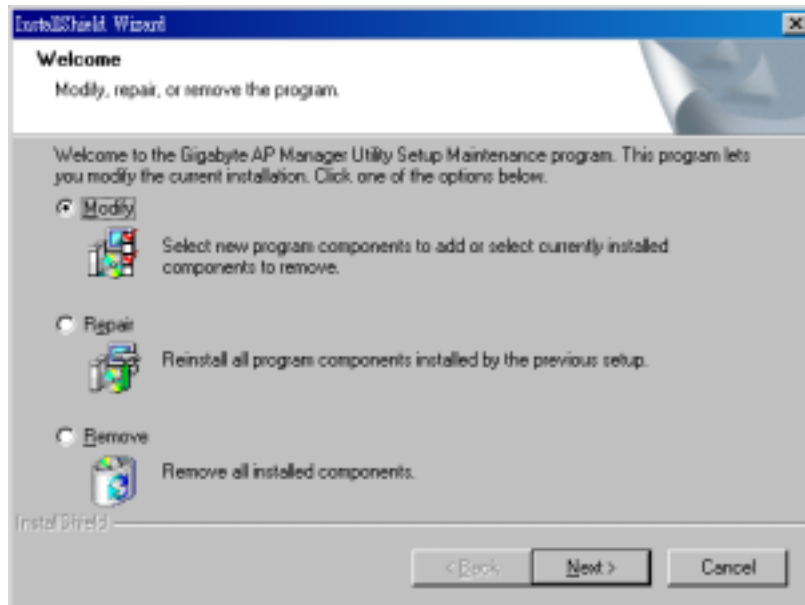


Step3. Click "OK" and then the Gigabyte AP Manager Utility has been uninstalled successfully.



If you just want to modify some program components or reinstall all program components, you can run the installation program directly. And then the InstallShield Wizard will appear.

Please choose one of the options what you want then click "**Next**" continues to modify, repair or remove the Gigabyte AP Manager Utility.



Limited Warranty

1-Year Warranty

Gigabyte warrants to the original consumer/purchaser that the product free from defects in material and workmanship for no limited time from the original manufactory shipment date. This warranty does not cover the product if it is damaged in the process of being installed or improperly used. Gigabyte may replace or repair the product with either new or reconditioned parts. Repaired or replaced products will be returned to you at the same revision level as received or higher at Gigabyte's option. Gigabyte reverses the right to replace discounted products with an equivalent generation product.

KEEP THIS STUB FOR YOUR PURCHASING RECORD

Customer:	
Phone No:	
Address:	
Email:	
Model:	
Serial:	
Date of Purchase:	
Place of Purchase:	
From Whom:	
Distributor:	

Customer Satisfaction

GIGA-BYTE TECHNOLOGY CO., LTD.

No.6, Bau Chiang Road, Hsin-Tien, Taipei Hsien, Taiwan, R.O.C.

Tel: 886-2-89124888

Fax:886-2-89124007

<http://www.gigabyte.com.tw>

Technical Support

E-mail: networksupport@gigabyte.com.tw