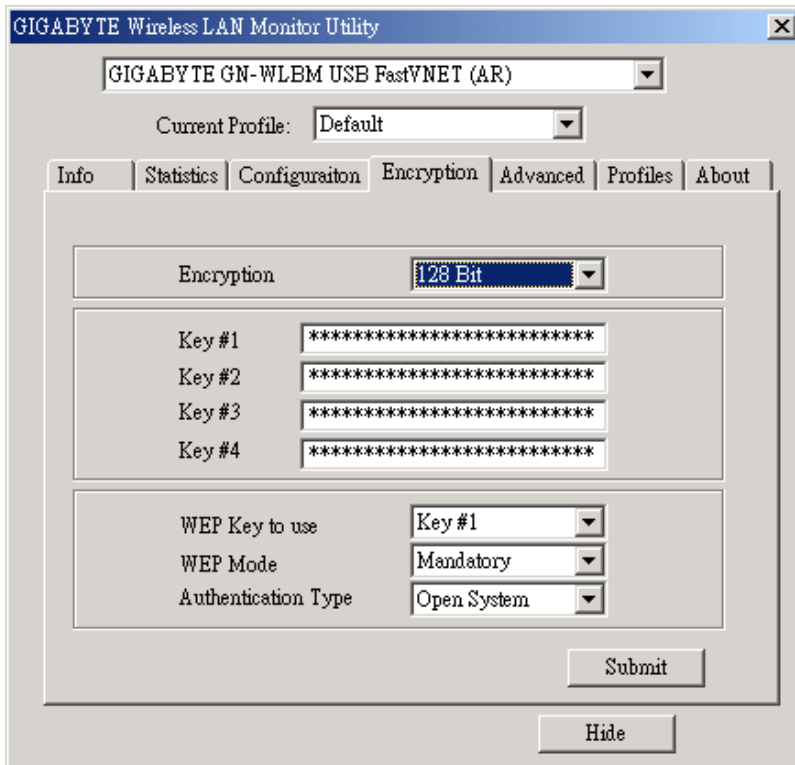


Figure 3-5. Encryption

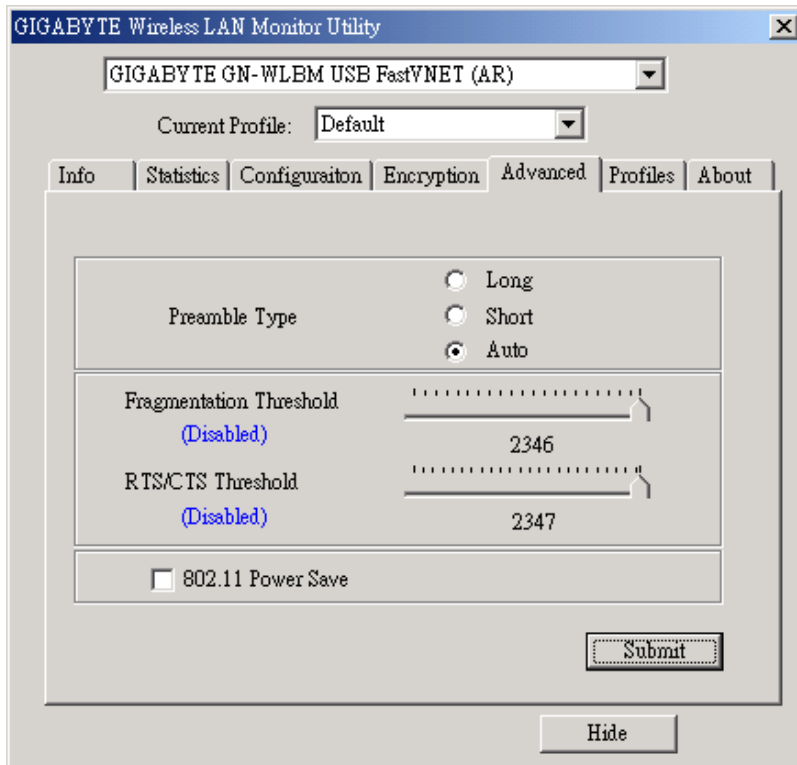


3-5. Advanced

By Choosing the *Advanced* option in any of the two modes, you can change advanced configuration settings, such as the Preamble Type, Fragmentation Threshold, and RTS/CTS Threshold (*Figure 3-6*). *Figure 3-5* shows the default configuration for the advanced settings. The USB adapter has an auto-detection feature therefore when selecting “**Auto**” for the preamble type it automatically selects the Preamble Type depending on the Access Point Preamble type

Note: In order to enable the Fragmentation and the RTS/CTS Threshold parameters move the slide bar with your mouse and then use the right and left arrow keys of your keyboard in order to select an exact number.

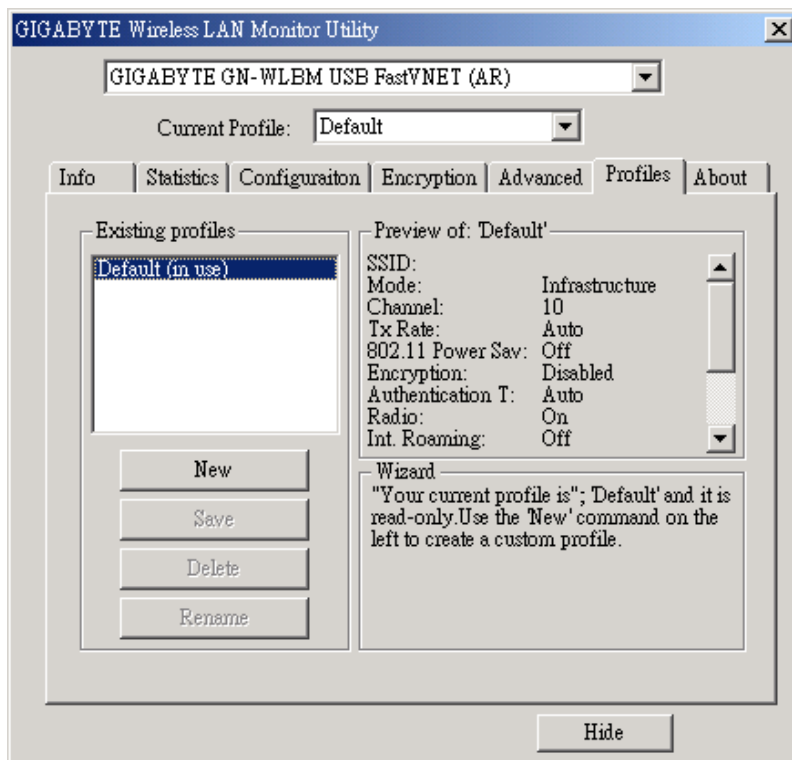
Figure 3-6. Advanced Settings



3-6. Profiles

This option shows you to view your current profile. You can click **“New”** to create a custom profile.

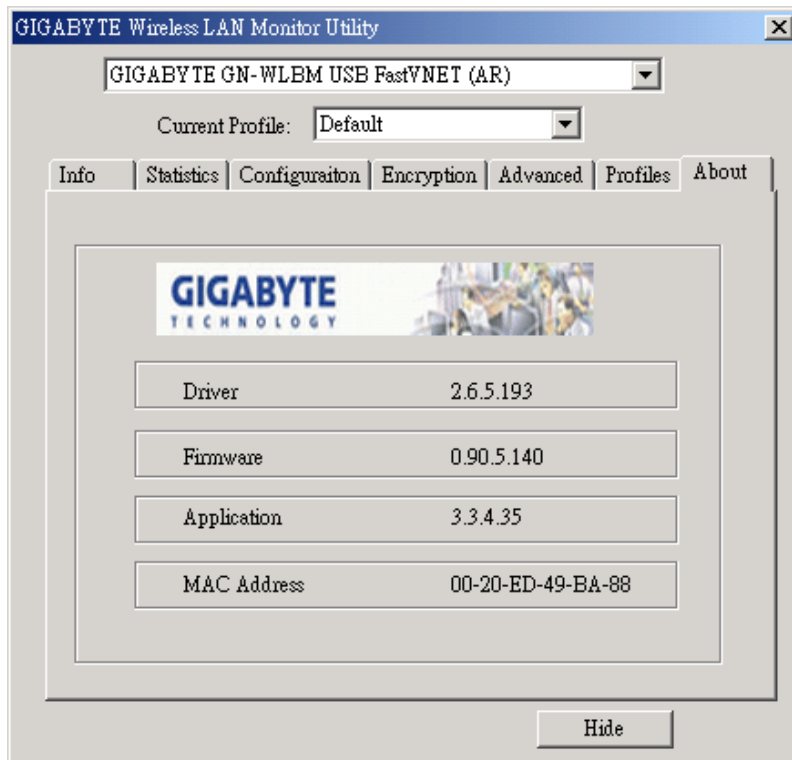
Figure 3-7. Your current profile



3-7. About

By choosing this option, you can view basic information about the utility like the Driver, Firmware and Application Version and this adapter's MAC address.

Figure 3-7. Version information and MAC address



Chapter 4. Specification

4-1. System		
Standards	IEEE 802.11b compliant, Wi-Fi compatible	
Host Interface	USB 1.1	
Modulation	1Mbps: DBPSK; 2Mbps: DQPSK; 5.5 and 11 Mbps: CCK	
Transmission Rate	1, 2, 5.5, 11 Mbps	
Operating Voltage	5V	
Operating Range	Open space: 100 - 300m; Indoor: 30 - 100m	
4-2. RF Performance		
Frequency Band	2.400 ~ 2.4835 GHz (subject to local regulation)	
Radio Technology	DSSS (Direct Sequence Spread Spectrum)	
Number of Channel	11 Channels (US, Canada)	4 channels (France)
	14 Channels (Japan)	13 Channels (Most European countries, ETSI)
Output Power	19dBm @ Nominal Temp Range	
Receive Sensitivity	- 80dBm @ 11 Mbps data rate, 8% PER	
Antenna	Two built-in diversity antennas	
4-3. Safety Regulation and Operating Environment		
EMC certification	FCC Part 15 (USA)	
	CE (Europe)	
Temperature Range	Operating: 0 ~ 50 deg C, Storing: -20 ~ 65 deg C	
Humidity	Max. 90% Non-condensing	
4-4. Software Support		
Driver	Windows 98/98SE/Me; Windows 2000/XP	
Roaming	Supports roaming.	
Network Protocol	TCP/IP, IPX, NetBEUI	
Security	64 bit WEP (128 bit WEP optional)	
Management Utility	Monitors the network situation.	
4-5. Mechanical		
Dimensions	89.2 x 62 x 14.5 mm	
Weight	TBD	
Packaging	Packaging specially used by Gigabyte.	
Host Interface	USB Type B connector	
USB cable	80cm	
LED indicator	Power and Link	

Federal Communication Commission Interference Statement

This equipment has been tested and found to comply with the limits for a Class B digital device, pursuant to Part 15 of the FCC Rules. These limits are designed to provide reasonable protection against harmful interference in a residential installation. This equipment generates, uses and can radiate radio frequency energy and, if not installed and used in accordance with the instructions, may cause harmful interference to radio communications. However, there is no guarantee that interference will not occur in a particular installation. If this equipment does cause harmful interference to radio or television reception, which can be determined by turning the equipment off and on, the user is encouraged to try to correct the interference by one of the following measures:

- Reorient or relocate the receiving antenna.
- Increase the separation between the equipment and receiver.
- Connect the equipment into an outlet on a circuit different from that to which the receiver is connected.
- Consult the dealer or an experienced radio/TV technician for help.

FCC Caution: To assure continued compliance, (example - use only shielded interface cables when connecting to computer or peripheral devices) any changes or modifications not expressly approved by the party responsible for compliance could void the user's authority to operate this equipment.

This device complies with Part 15 of the FCC Rules. Operation is subject to the following two conditions: (1) This device may not cause harmful interference, and (2) this device must accept any interference received, including interference that may cause undesired operation.

IMPORTANT NOTE:

FCC Radiation Exposure Statement:

This equipment complies with FCC radiation exposure limits set forth for an uncontrolled environment. This equipment should be installed and operated with minimum distance 20cm between the radiator & your body.

This transmitter must not be co-located or operating in conjunction with any other antenna or transmitter.