



GN-WLBM101

IEEE 802.11b Wireless USB Network Adapter

User's Manual

<http://www.gigabyte.com.tw>

Rev. 1.0 First Edition

Contents

CHAPTER 1. PRODUCT OVERVIEW	1
1-1. INTRODUCTION TO THE WIRELESS LAN ADAPTER.....	1
1-2. FEATURES	1
1-3. PHYSICAL DIMENSIONS/PACKAGING.....	1
1-4. LED INDICATING LIGHT.....	2
1-5. SYSTEM REQUIREMENTS	2
1-5-1. Supported Platform.....	2
1-5-2. Supported Operation System.....	2
CHAPTER 2. INSTALLING THE WIRELESS LAN ADAPTER.....	3
2-1. INSTALLING THE DRIVER & UTILITY (APPLICABLE TO ANY SUPPORTED OS)	3
CHAPTER 3. USING THE UTILITY.....	6
3-1. INFO.....	6
3-2. STATISTICS	7
3-3. CONFIGURATION	8
3-4. ENCRYPTION.....	8
3-5. ADVANCED	9
3-6. PROFILES	10
3-7. ABOUT	11
CHAPTER 4. SPECIFICATIONS	12

Chapter 1. Product Overview

1-1. Introduction to The Wireless LAN Adapter

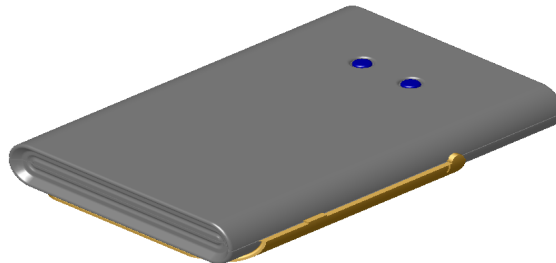
This wireless LAN (Local Area Network) adapter is composed of the IEEE 802.11b MAC, Baseband, and radio components, USB interface, and two built-in antennas. This product adopts the direct sequence spread spectrum (DSSS) technology and the DBPSK, DQPSK, and CCK modulation mode to provide a very stable wireless communication quality and an excellent signal receiver capability.

Our product features the compact size, low power consumption, and power management functions, and provides a high-speed wireless data communication. Therefore, our product is ideally suitable for being integrated into the personal mobile and desktop platform.

1-2. Features

- Conforms to IEEE 802.11b specification.
- Transmits data rate up to the maximum speed of 11Mbps.
- Dynamically scales the data rate to 11, 5.5, 2, and 1Mbps.
- Automatic power management to reduce battery consumption.
- Built-in diversity antenna.
- Supports 64-bit /128-bit WEP encryption.
- Driver supports Windows 98/98SE/Me and Windows2000/XP.

1-3. Physical Dimensions/Packaging



Dimensions: 89.2mm * 62mm * 14.5mm

This wireless LAN adapter conforms to the USB1.1 Mechanical standard. There are two LED-indicating lights to indicate power/Link status.

1-4. LED Indicating Light

- **Power:** The Power LED lights up when the USB wireless LAN adapter is powered on.
- **Link:** The Link LED lights up when the adapter has an active connection. If the LED isn't on, the adapter isn't interfacing with the network.

1-5. System Requirements

1-5-1. Supported Platform

IBM PC/AT compatible computer

1-5-2. Supported Operation System

Windows 98/98SE/Me
Windows 2000/XP

Chapter 2. Installing the Wireless LAN Adapter

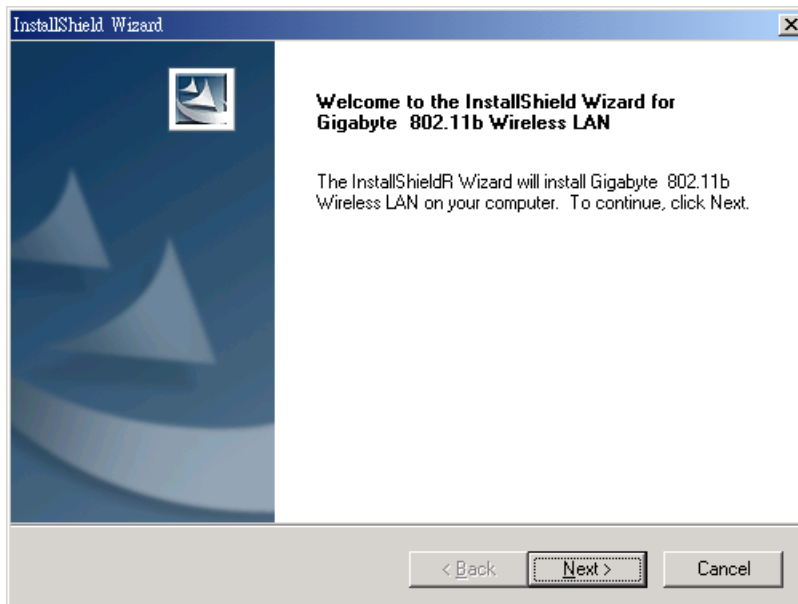
2-1. Installing The Driver & Utility (Applicable to any supported OS)

Step 1: Please make sure that you don't plug your USB adapter yet.

Step 2: Insert our setup CD into your CDROM drive, the following window will pop up.



Step 3: Click "Install Wireless LAN Driver".



Step 4: Click "Next".