



**GN-WBKG**

**802.11b+g USB STICK Wireless LAN Adapter**

# **User's Manual**

---

<http://www.gigabyte.com.tw>

---

Rev. 1.0 First Edition

**Federal Communication Commission Interference Statement**

This equipment has been tested and found to comply with the limits for a Class B digital device, pursuant to Part 15 of the FCC Rules. These limits are designed to provide reasonable protection against harmful interference in a residential installation. This equipment generates, uses and can radiate radio frequency energy and, if not installed and used in accordance with the instructions, may cause harmful interference to radio communications. However, there is no guarantee that interference will not occur in a particular installation. If this equipment does cause harmful interference to radio or television reception, which can be determined by turning the equipment off and on, the user is encouraged to try to correct the interference by one of the following measures:

- Reorient or relocate the receiving antenna.
- Increase the separation between the equipment and receiver.
- Connect the equipment into an outlet on a circuit different from that to which the receiver is connected.
- Consult the dealer or an experienced radio/TV technician for help.

**FCC Caution:** To assure continued compliance, any changes or modifications not expressly approved by the party responsible for compliance could void the user's authority to operate this equipment.

This device complies with Part 15 of the FCC Rules. Operation is subject to the following two conditions: (1) This device may not cause harmful interference, and (2) this device must accept any interference received, including interference that may cause undesired operation.

**IMPORTANT NOTE:****FCC Radiation Exposure Statement:**

This equipment complies with FCC radiation exposure limits set forth for an uncontrolled environment. End users must follow the specific operating instructions for satisfying RF exposure compliance.

This transmitter must not be co-located or operating in conjunction with any other antenna or transmitter.

# Contents

<b>CHAPTER 1 PRODUCT OVERVIEW</b>	<b>1</b>
1-1. INTRODUCTION .....	1
1-2. FEATURES .....	1
1-3. PHYSICAL DIMENSIONS/PACKAGING .....	1
1-4. LED INDICATOR .....	2
1-5. SYSTEM REQUIREMENTS .....	2
<b>CHAPTER 2 INSTALLING THE WLAN CARD</b>	<b>3</b>
2-1. DRIVER & UTILITY INSTALLATION - WINDOWS® 98SE .....	3
2-2. DRIVER & UTILITY INSTALLATION - WINDOWS® ME .....	7
2-3. DRIVER & UTILITY INSTALLATION - WINDOWS® 2000 .....	10
2-4. DRIVER & UTILITY INSTALLATION - WINDOWS® XP .....	14
<b>CHAPTER 3 USING THE GIGABYTE WLAN CONFIGURATION UTILITY</b>	<b>17</b>
3-1. THE PROFILE TAB .....	17
3-2. THE LINK STATUS TAB .....	27
3-3. THE SITE SURVEY TAB .....	28
3-4. "STATISTICS" SETTING .....	29
3-5. THE ABOUT TAB .....	30
<b>CHAPTER 4 TROUBLESHOOTING</b>	<b>31</b>
CANNOT ENABLE 802.1X, WPA OR WPA-PSK .....	31
CONNECT TO THE OTHER WIRELESS ETHERNET CARD .....	31
CANNOT ESTABLISH CONNECTION TO A WIRELESS NETWORK .....	31
CAN CONNECT TO AN ACCESS POINT, BUT CANNOT ACCESS THE INTERNET .....	31
POOR LINK QUALITY AND WEAK SIGNAL STRENGTH .....	31
<b>CHAPTER 5 HARDWARE SPECIFICATIONS</b>	<b>32</b>

# Chapter 1 Product Overview

## 1-1. Introduction

This 802.11b/g Wireless Local Area Network (WLAN) card is composed of the MAC, Baseband, and radio components, USB STICK interface, Built-in antenna.. It operates in 2.4GHz frequency bands, providing fast (up to 54Mbps) and secure (support AES, 802.1x & WEP and WPA) connections to 802.11b and 802.11g networks from a single card.

This product features the compact size, low power consumption, and power management functions, and provides a high-speed wireless data communication. Therefore, this product is ideally suitable for being integrated into the personal mobile and handheld platform.

## 1-2. Features

- Conforms to 802.11b/802.11g specification.
- Two dimensional rotation of maximum 180 degree
- Transmits data rate up to the maximum speed of 54Mbps.
- Dynamically scales the data rate.
- Automatic power management to reduce battery consumption.
- Built-in antenna.
- Seamless roaming between WLAN.
- Supports AES (Advance Encryption System), enterprise-class 802.1x security and multiple levels of WEP encryption (64-bit /128-bit), and WPA (Wi-Fi Protected Access)..
- Driver supports Windows 98SE/Me/2000/XP.

## 1-3. Physical Dimensions/Packaging

Dimensions: 109mm x 25mm x 16mm

Please check that the package contents include:

- GN-WBKG Wireless USB STICK Adapter
- GN-WBKG Installation CD with Windows Drivers
- User Manual

In case of damaged or missing package contents, please contact your local distributor or authorized reseller immediately. Should you require returning the product, please include all original packing materials or the warranty will be voided.

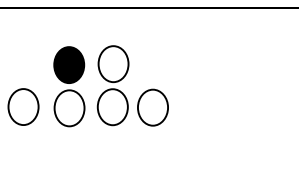
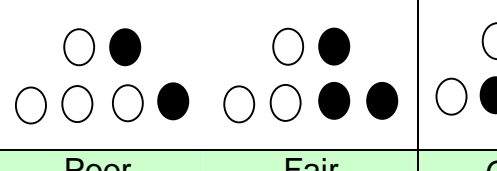
## 1-4. LED Indicator

The wireless card complies with the standards of USB institute. There are six LED indicators: one is for scanning/the status of data transferring, another is for connecting statuses, and the others are for indicating signal reception.

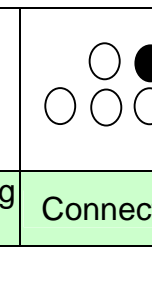
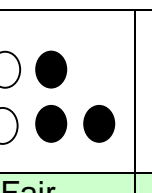


- **Connecting Indicator:** when the wireless connector gets connected, the indicator will illuminate.

- **Scanning/Data Transferring Indicator: Flashing status are as below:**

<b>Connecting Indicator: Off</b>	Internet Connector is scanning networks
<b>Connecting Indicator: On</b>	Internet Connector is transferring data.

<b>LED Indicator</b>		
<b>Receiver's status</b>	Scanning/transferring data	Connecting

- **Signal Reception Indicator: I shows "poor", "fair", "Good", and "Excellent" four kinds of reception qualities.**

<b>LED Indicator</b>				
<b>Status of Receivers</b>	Poor	Fair	Good	Excellent

## 1-5. System Requirements

- IBM PC/AT compatible computer
- Windows® 98SE/Me/2000/XP

## Chapter 2 Installing the WLAN Card

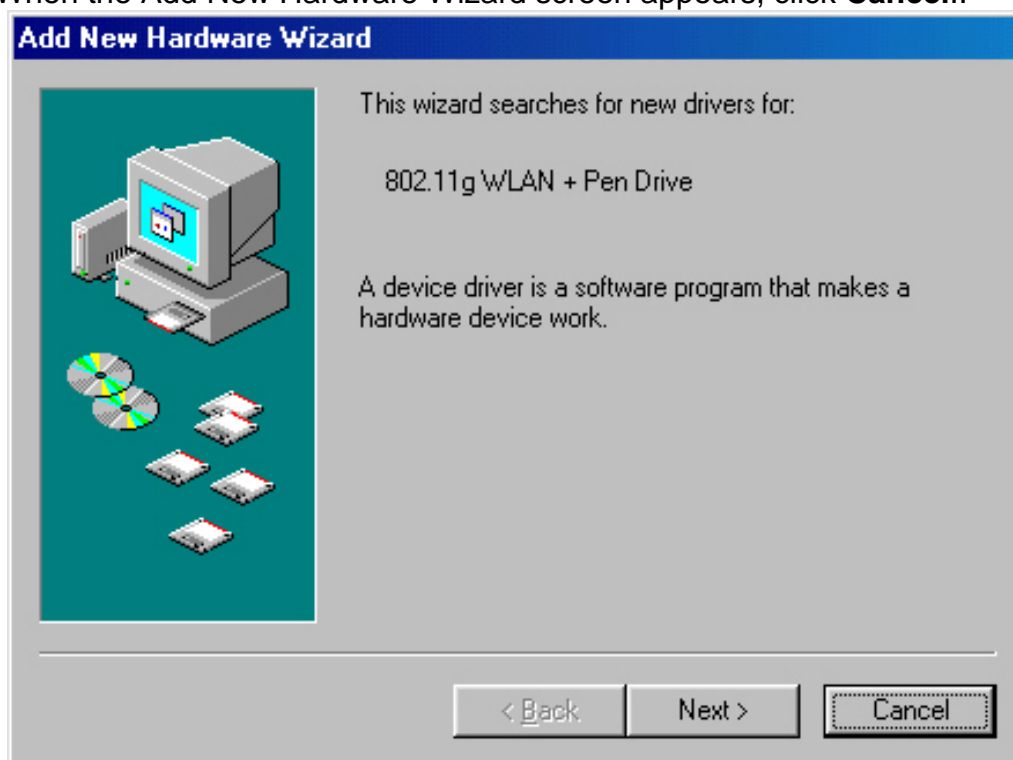
This chapter will assist you in completing the hardware and software installation of the GN-WBKG Wireless USB STICK Adapter successfully. Please refer to the driver & utility installation section that matches your operating system.

### 2-1. Driver & Utility Installation - Windows® 98SE

**Step 1:** Remove the rest of the wireless Ethernet cards.

**Step 2:** Insert the GN-WBKG Adapter.

**Step 3:** When the Add New Hardware Wizard screen appears, click **Cancel**..

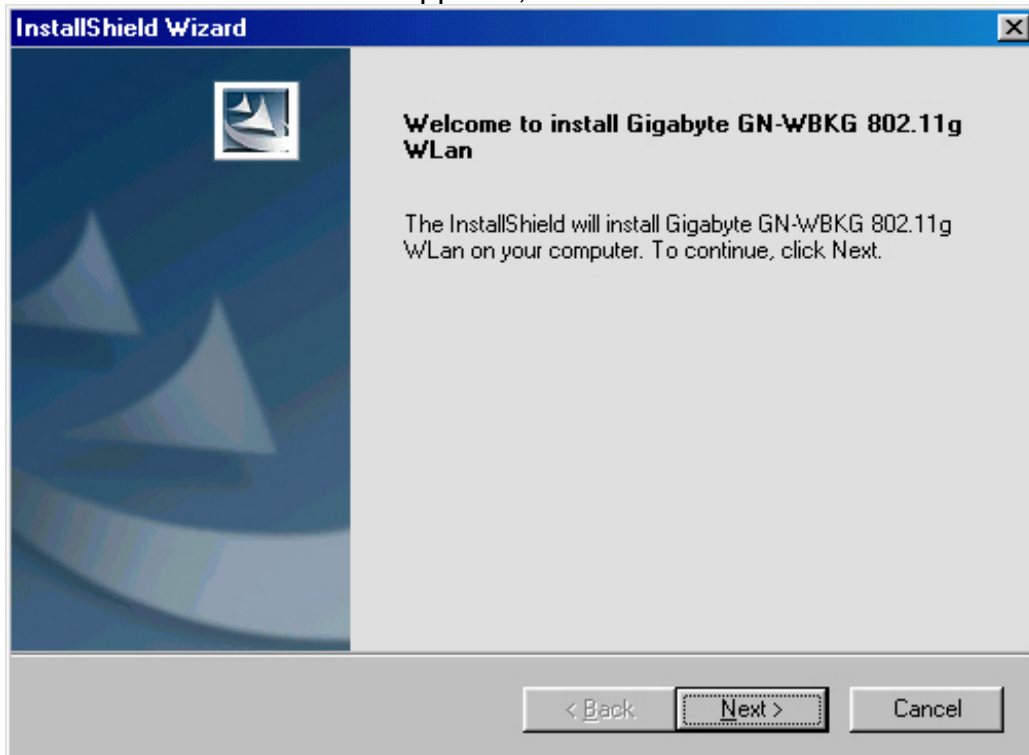


**Step 4:** Insert the GN-WBKG Installation CD into the CD-ROM drive. The GIGABYTE GN-WBKG Wireless USB STICK Adapter setup screen appears.

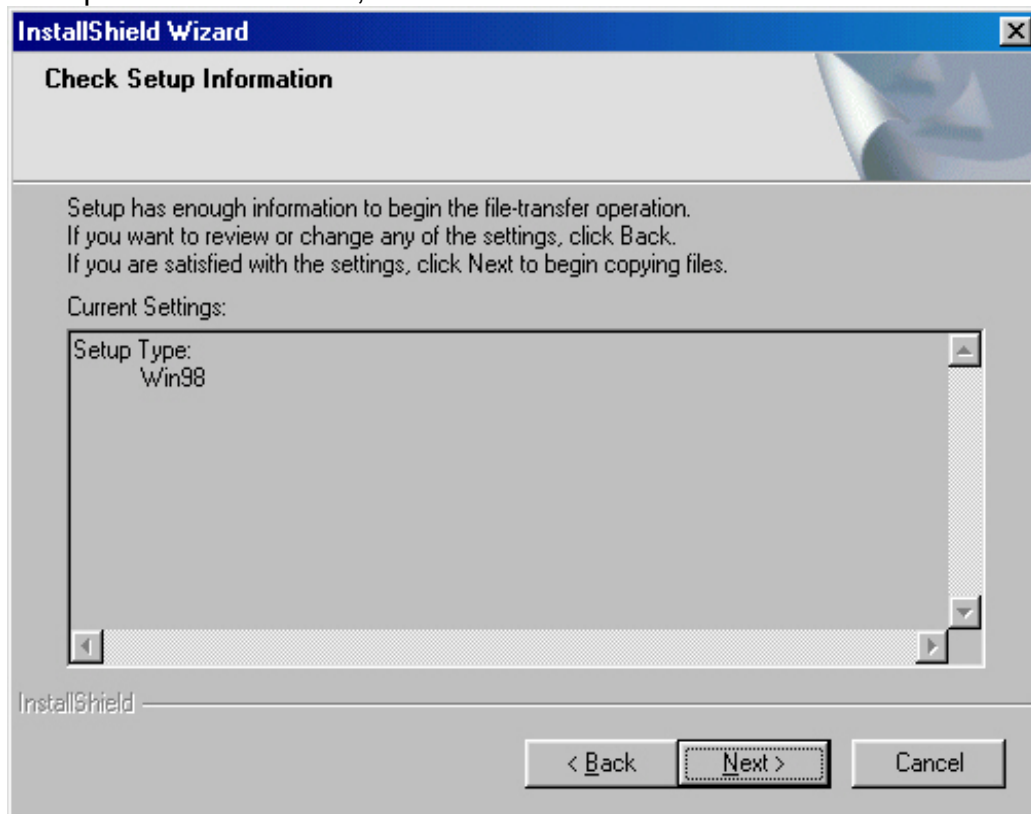
**Step 5:** Drag your mouse over **Install Wireless LAN Utility** and click on it to start the utility installation program.



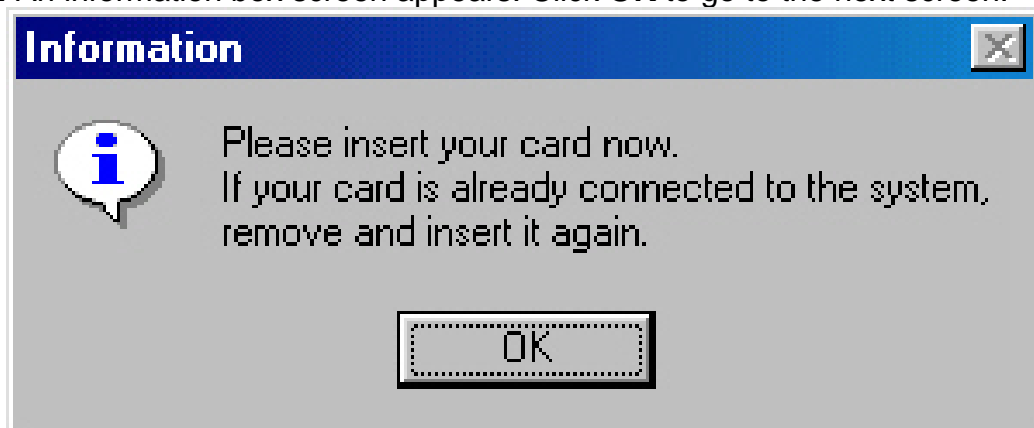
**Step 6:** When the Welcome screen appears, click **Next**.



**Step 7:** The Check Setup Information screen displays the Operating System of your computer. If it is correct, click **Next** to continue.

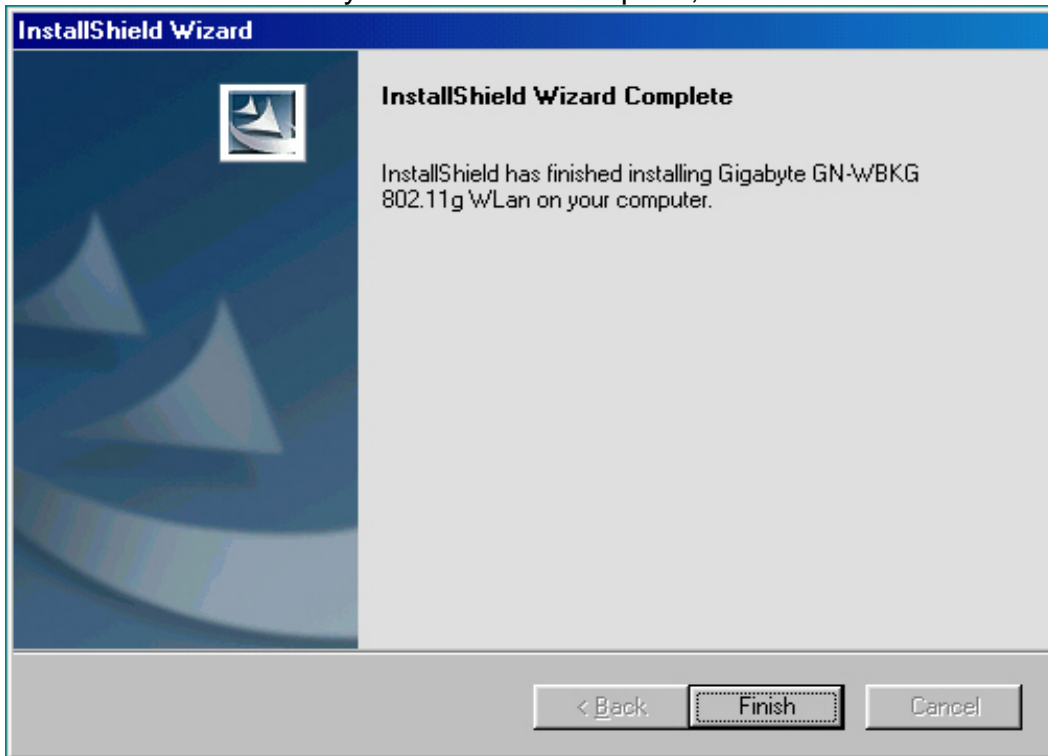


**Step 8:** An information box screen appears. Click **OK** to go to the next screen.





**Step 9:** After the software utility installation is complete, click **Finish**.



## 2-2. Driver & Utility Installation - Windows® ME

**Step 1:** Remove the rest of the Wireless Ethernet cards.

**Step 2:** Insert the GN-WBKG Adapter.

**Step 3:** When the Add New Hardware Wizard screen appears, click **Cancel**..

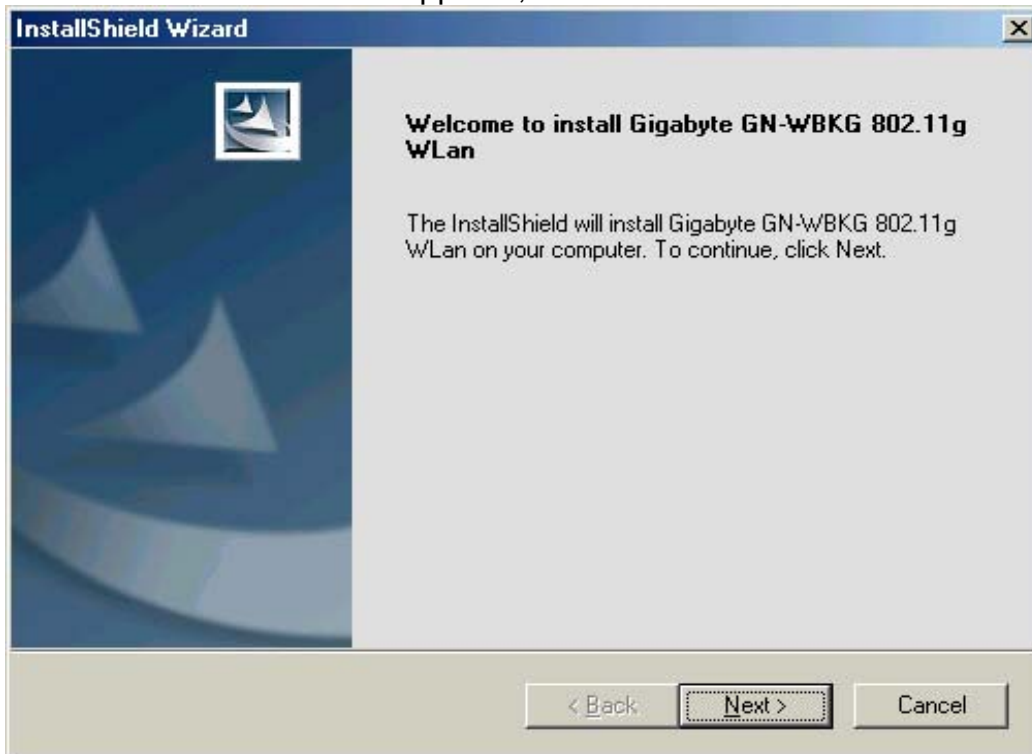


**Step 4:** Insert the GN-WBKG Installation CD into the CD-ROM drive. The GIGABYTE GN-WBKG Wireless USB STICK Adapter setup screen appears.

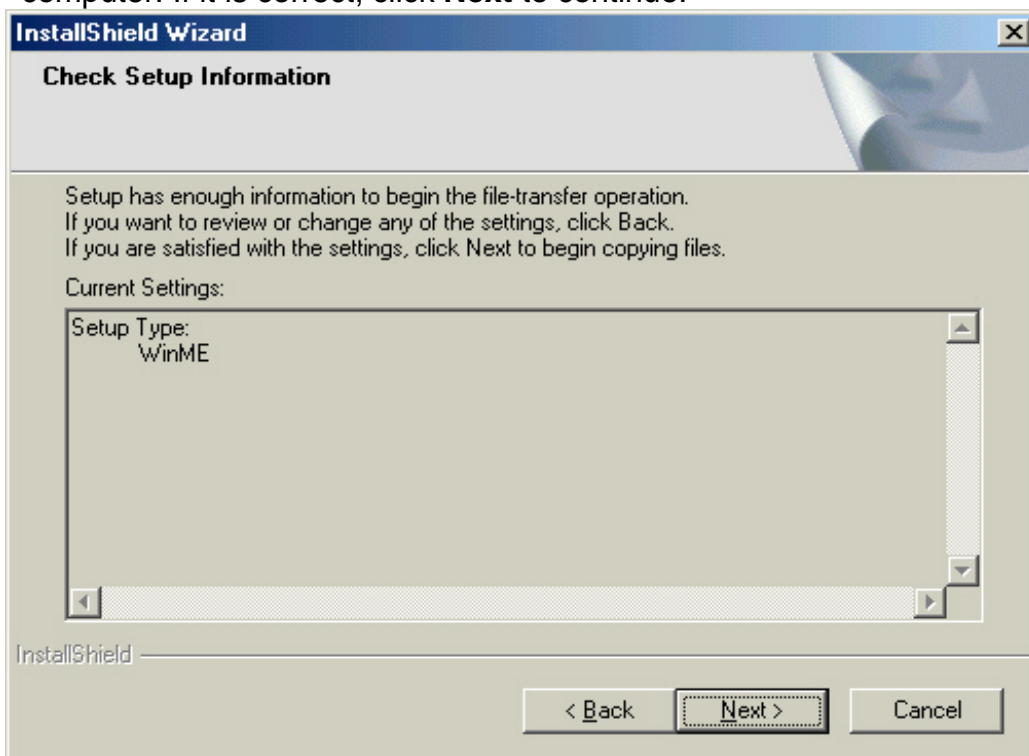
**Step 5:** Drag your mouse over **Install Wireless LAN Utility** and click on it to start the utility installation program.



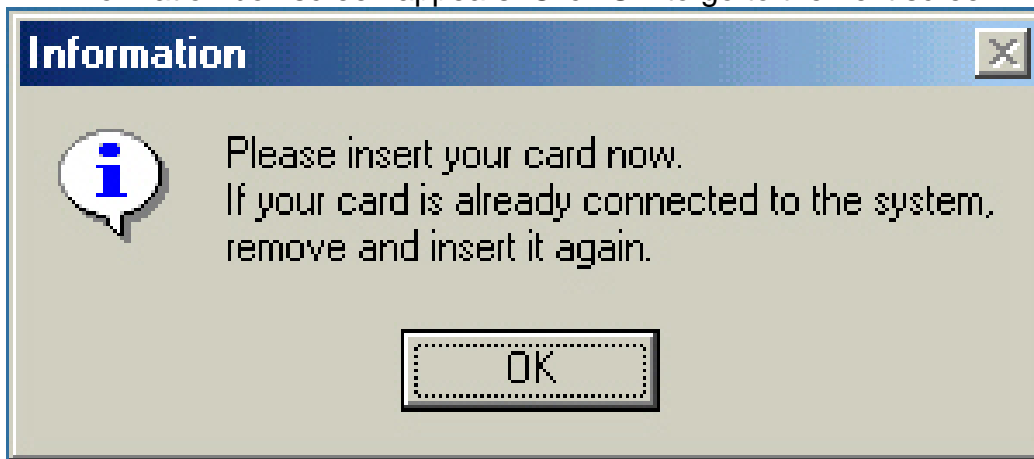
**Step 6:** When the Welcome screen appears, click **Next**..



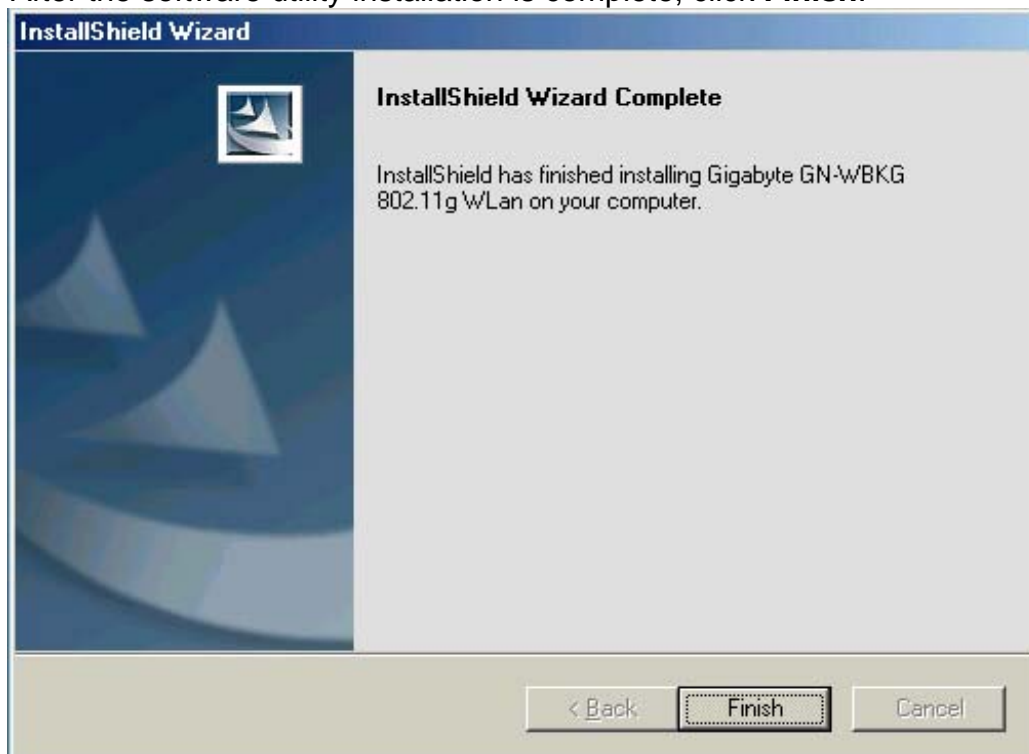
**Step 7:** The Check Setup Information screen displays the Operating System of your computer. If it is correct, click **Next** to continue.



**Step 8:** An information box screen appears. Click **OK** to go to the next screen.



**Step 9:** After the software utility installation is complete, click **Finish**.



## 2-3. Driver & Utility Installation - Windows® 2000

**Step 1:** Remove the rest of the Wireless Ethernet cards from the computer.

**Step 2:** Insert the GN-WBKG Adapter.

**Step 3:** When the Add New Hardware Wizard screen appears, click **Cancel**..



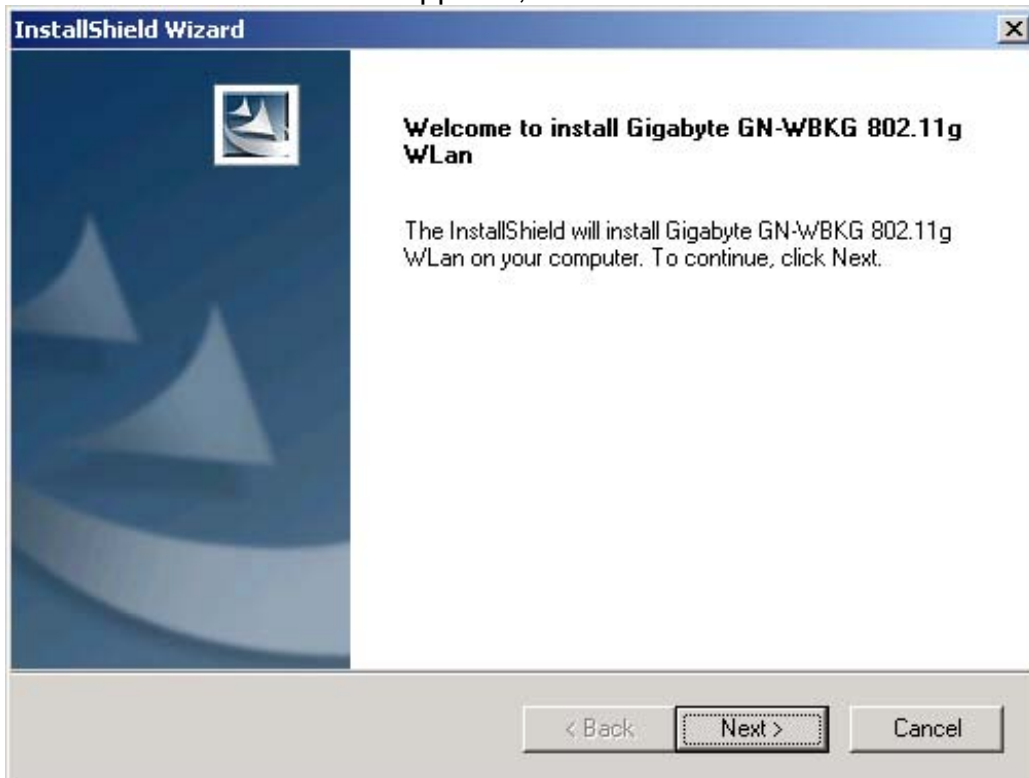
**Step 4:** Insert the GN-WBKG Installation CD into the CD-ROM drive. The GIGABYTE GN-WBKG Wireless USB STICK Adapter setup screen appears.

**Step 5:** Drag your mouse over **Install Wireless LAN Utility** and click on it to start the utility installation program.

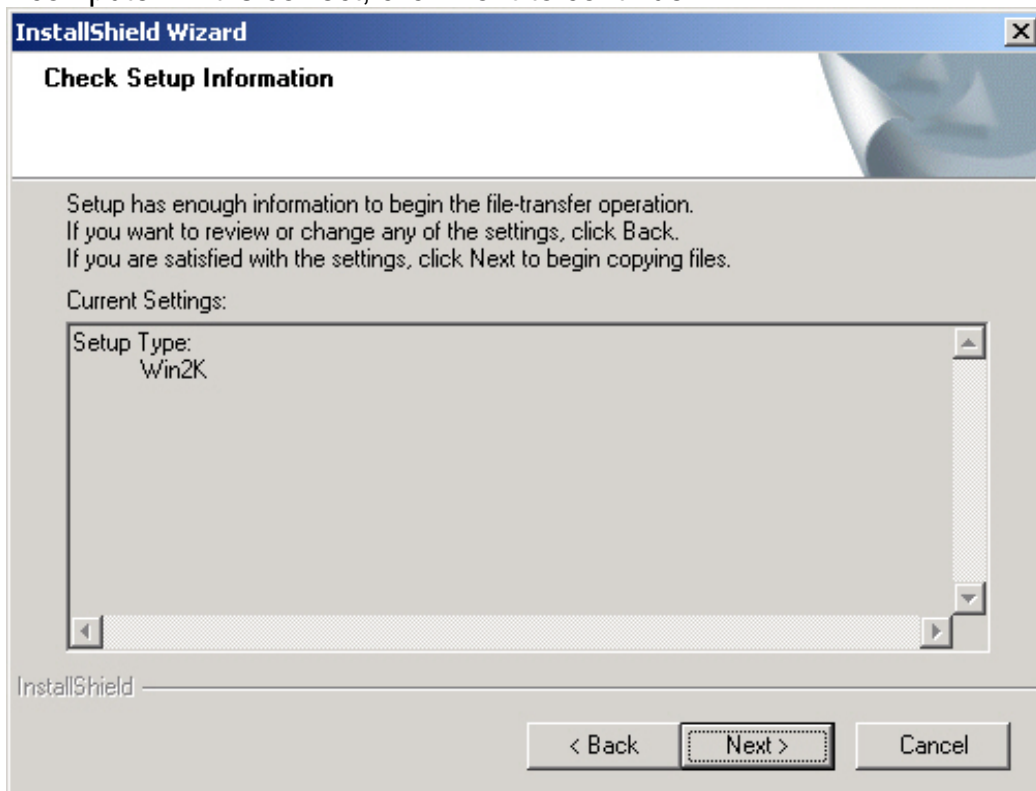




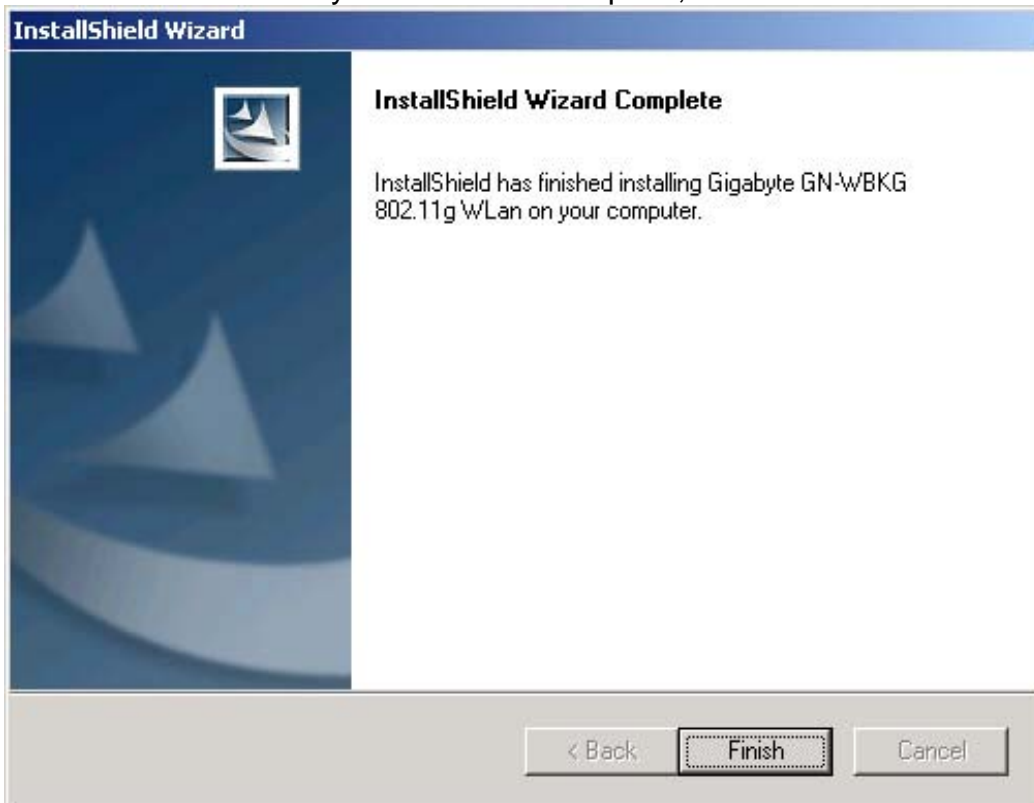
**Step 6:** When the Welcome screen appears, click **Next**.



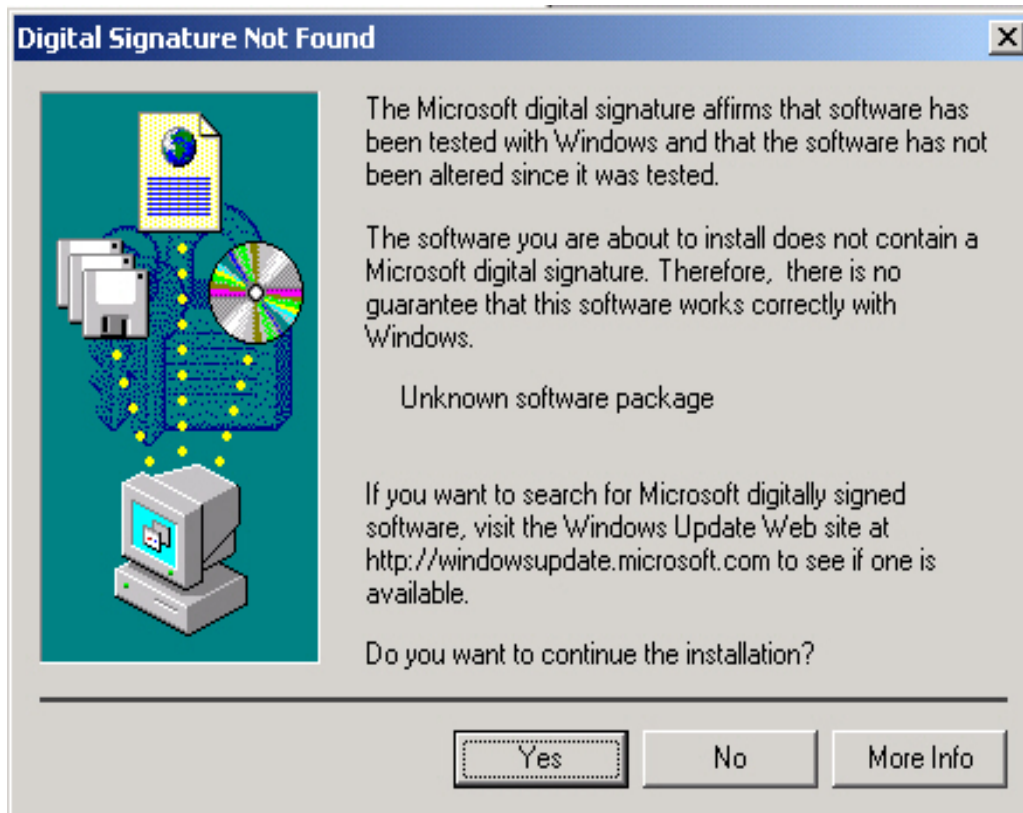
**Step 7:** The Check Setup Information screen displays the Operating System of your computer. If it is correct, click **Next** to continue..



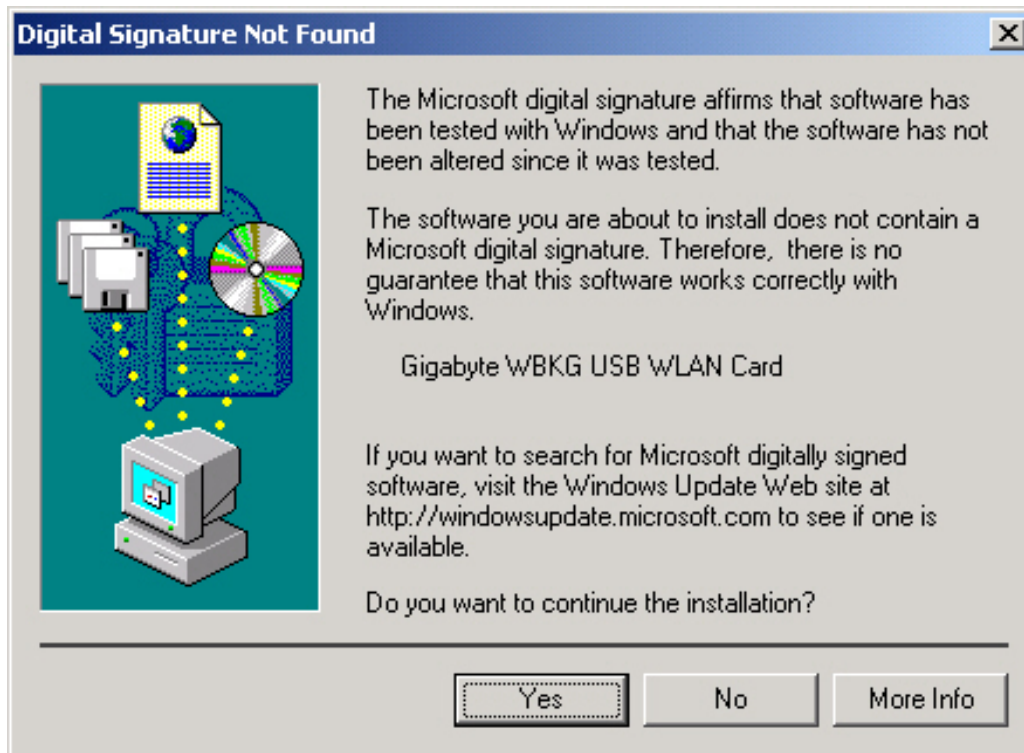
**Step 8:** After the software utility installation is complete, click **Finish**.



**Step 9:** The screen below will appear. This does not mean there is a problem. Click **Yes** to continue with installation.



**Step 10:** If the screen below appears, this does not mean there is a problem. Click **Yes** to continue.





## 2-4. Driver & Utility Installation - Windows® XP

**Step 1:** Remove the rest of the Wireless Ethernet card from the computer.

**Step 2:** Insert the GN-WBKG Adapter.

**Step 3:** When the Add New Hardware Wizard screen appears, click **Cancel**..

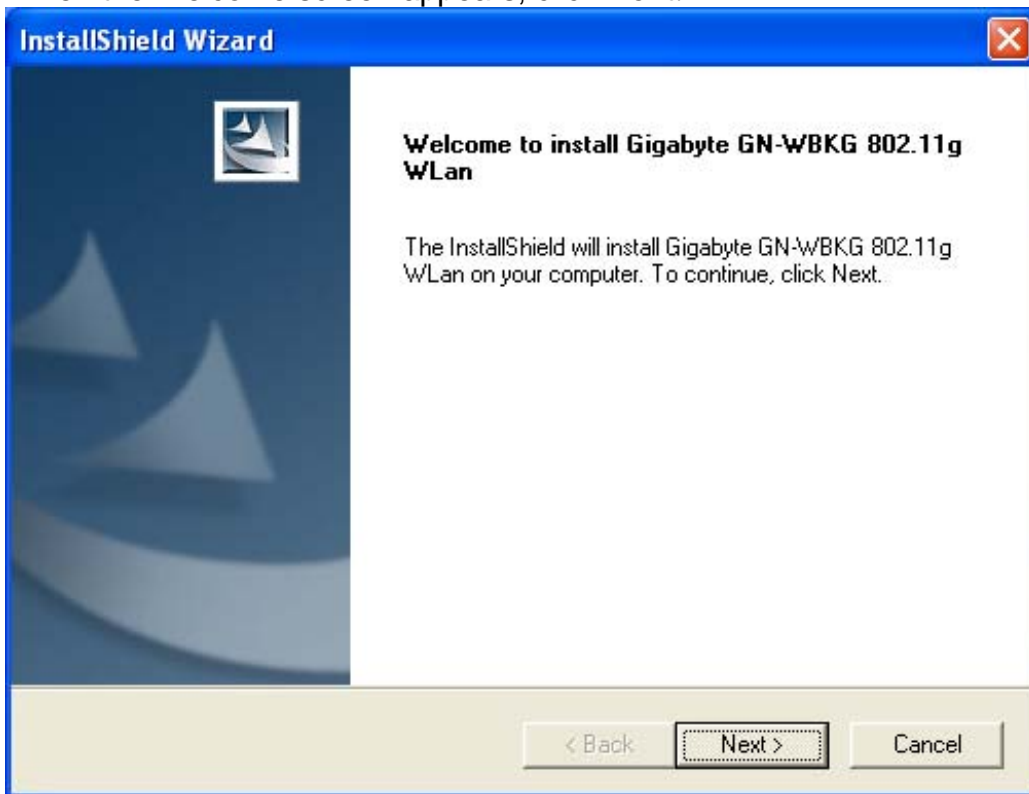


**Step 4:** Insert the GN-WBKG Installation CD into the CD-ROM drive. The GIGABYTE GN-WBKG Wireless USB STICK Adapter setup screen appears.

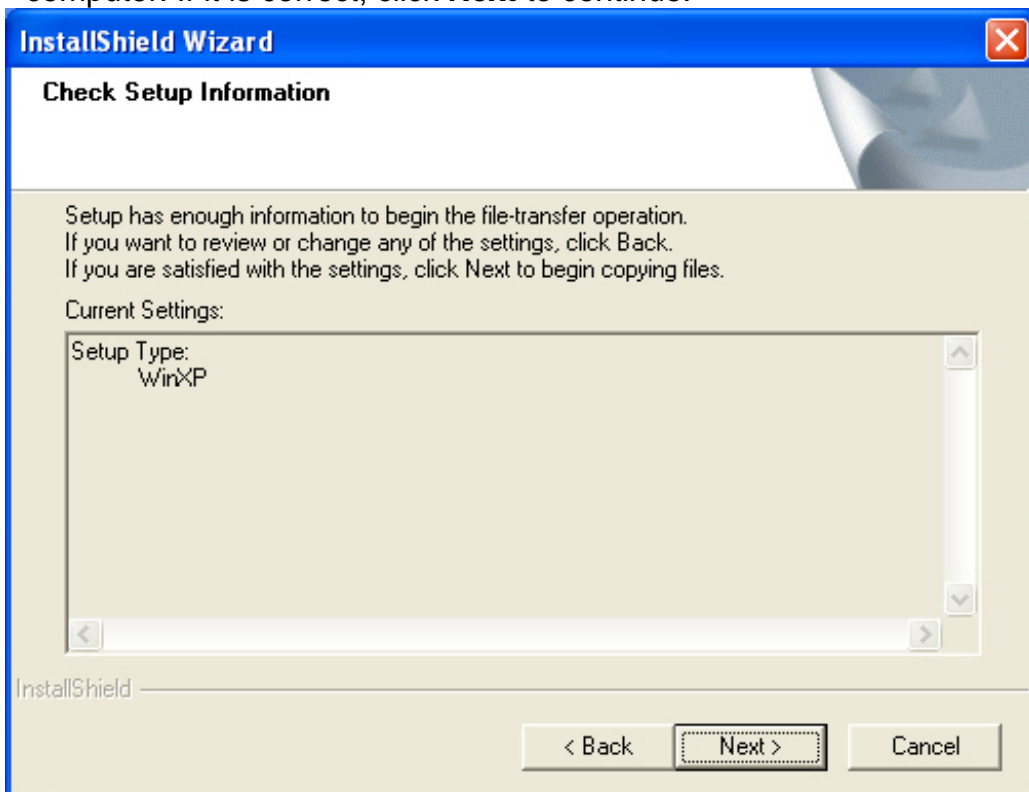
**Step 5:** Drag your mouse over **Install Wireless LAN Utility** and click on it to start the utility installation program.



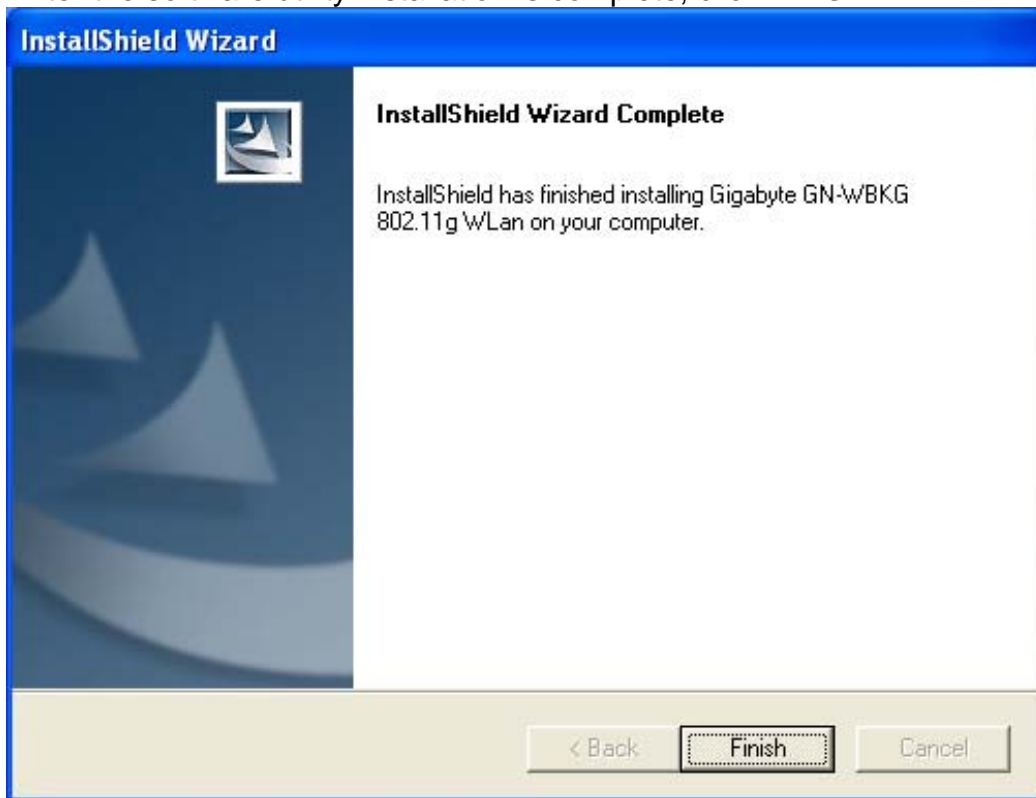
**Step 6:** When the Welcome screen appears, click **Next**..



**Step 7:** The Check Setup Information screen displays the Operating System of your computer. If it is correct, click **Next** to continue.



**Step 8:** After the software utility installation is complete, click **Finish**.



# Chapter 3 Using the GIGABYTE WLAN Configuration Utility

The Gigabyte WLAN Utility is a powerful application that helps you to configure the GN-WBKG Wireless USB STICK Adapter as well as monitor the network status link. It automatically appears as an icon in the system tray at the bottom right corner of screen whenever the card is operating (see **Figure 3-1**). The icon displays signal strength (one green box = weak signal, 4 green boxes = strong signal) and double-clicking on it launches the utility.

**Figure 3-1.** The icon of the Configuration & Monitor Utility



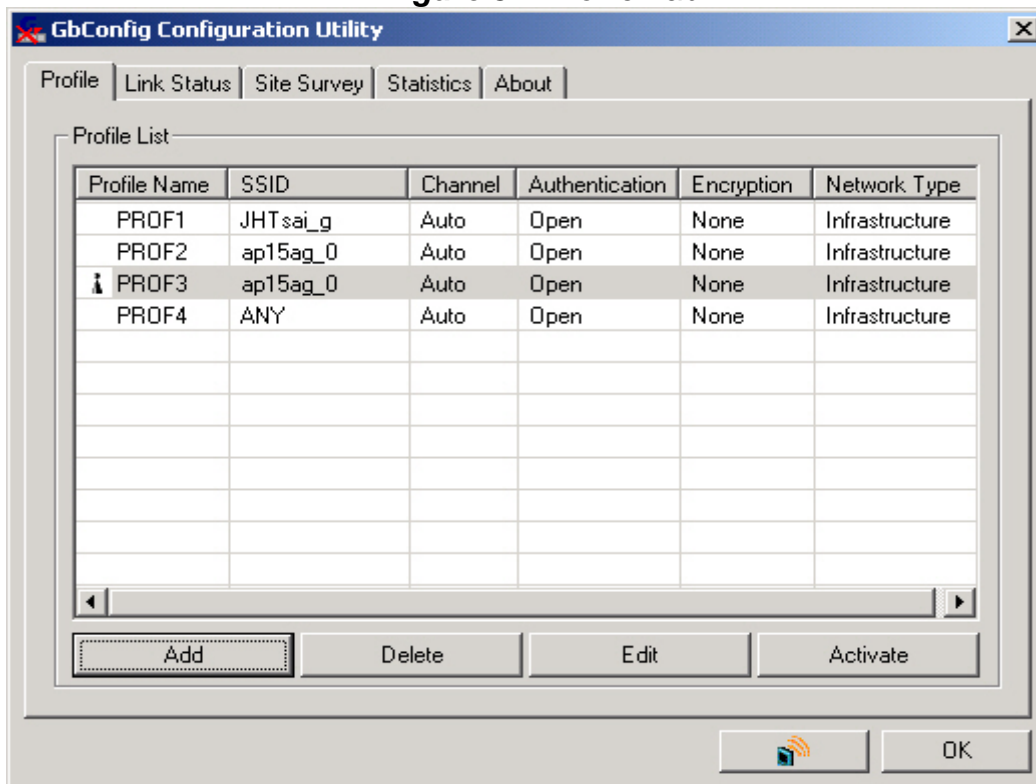
You may also open the Gigabyte WLAN Utility from the Windows **Start** menu, selecting **Programs** and then **Gigabyte WLAN Utility**.

**Note:** Modifications to WLAN configuration settings can be done when GN-WBKG is in use or through the network configuration tool provided by Windows® when it is inactive.

## 3-1. The Profile Tab

Click on the Profile tab in the Gigabyte WLAN Configuration Utility to view the values for each defined profile. Click the **Add** button to create a new profile (see section below for further details), the **Delete** button to delete a selected profile, the **Edit** button to modify a selected profile and click the **Activate** button to have a selected profile become active.

**Figure 3-2** Profile Tab



### Profile Name -

Name associated with specific wireless parameters and settings. The icon indicates the currently active profile.

**SSID –**

Displays the Service Set Identity (wireless network name) associated with active profile.

**Channel –**

Displays which channel the profile is operating on.

**Authentication –**

Displays authentication type associated with profile.

**Encryption –**

Four encryption types currently used in the profile include “None”, “WEP”, “AES” and “TKIP”.

**Network Type –**

Displays the wireless mode (Infrastructure or Ad-Hoc) associated with the profile.

**Add :** Add the setup file (see the picture 3-3).

**Delete :** Delete the setup file you have chosen.

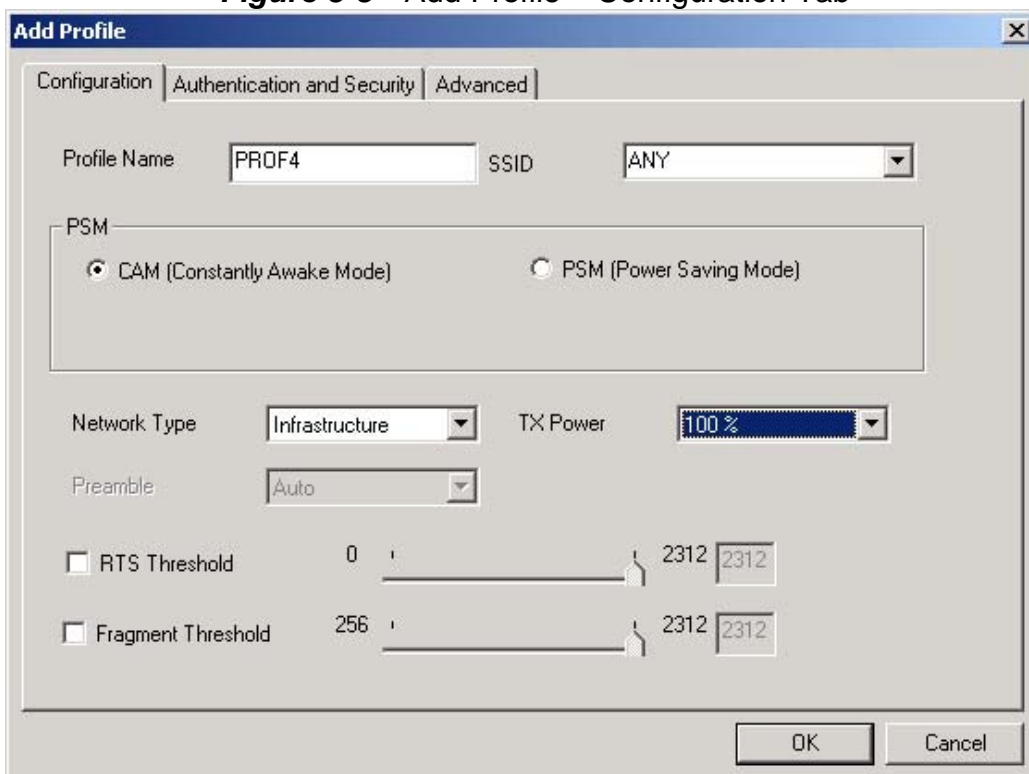
**Edit :** Edit the setup file you have chosen.

**Apply :** Apply to the setup file you have chosen.

 **Signal Control:** To turn off transferring signals, click on “” icon on the bottom right corner of the screen. Click “” to transfer signal again.

**3-1-1. Add Profile – Configuration Tab**

**Figure 3-3** Add Profile – Configuration Tab



**Profile Name –**

Type in a unique profile name, set the corresponding parameters and click the **Apply** button to add profile.

**SSID –**

Select a defined Service Set Identity detected by the system from the drop-down list or input a new SSID (32-character maximum).

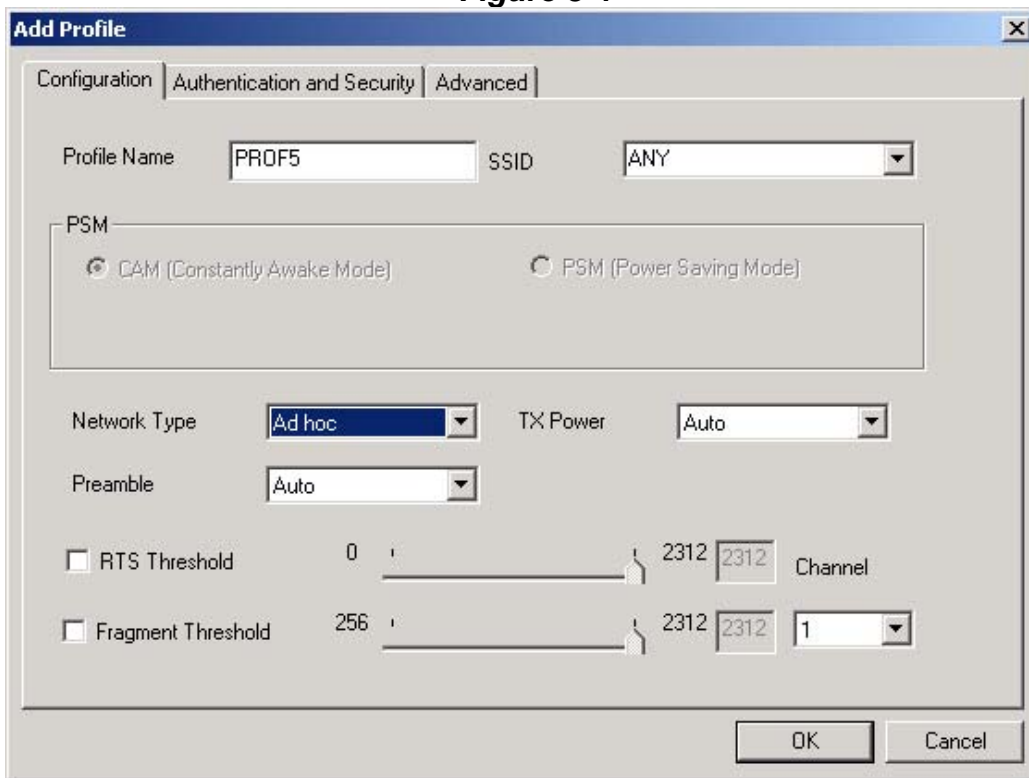
**Power Saving Mode –**

Select the PSM option to enable power saving feature (when no data will be transmitted) or the CAM option to have device always on.

**Network Type –**

Displays the current wireless mode (Infrastructure or Ad-Hoc) the USB STICK Adapter is operating in. Infrastructure is the most common and is used when connecting your PC to a wireless access point or wireless router. Ad-Hoc mode is used to connect to another computer without the use of a wireless access point or wireless router. In Ad-Hoc mode, the Preamble and Channel can be manually set (see **Figure 3-4**).

**Figure 3-4**



**TX Power –**

Allows you to define the transmit power at various percentage levels with 100% being the default value.

**RTS Threshold –**

Define the packet size the wireless node uses to determine appropriate transmission mechanism.

**Fragmentation Threshold –**

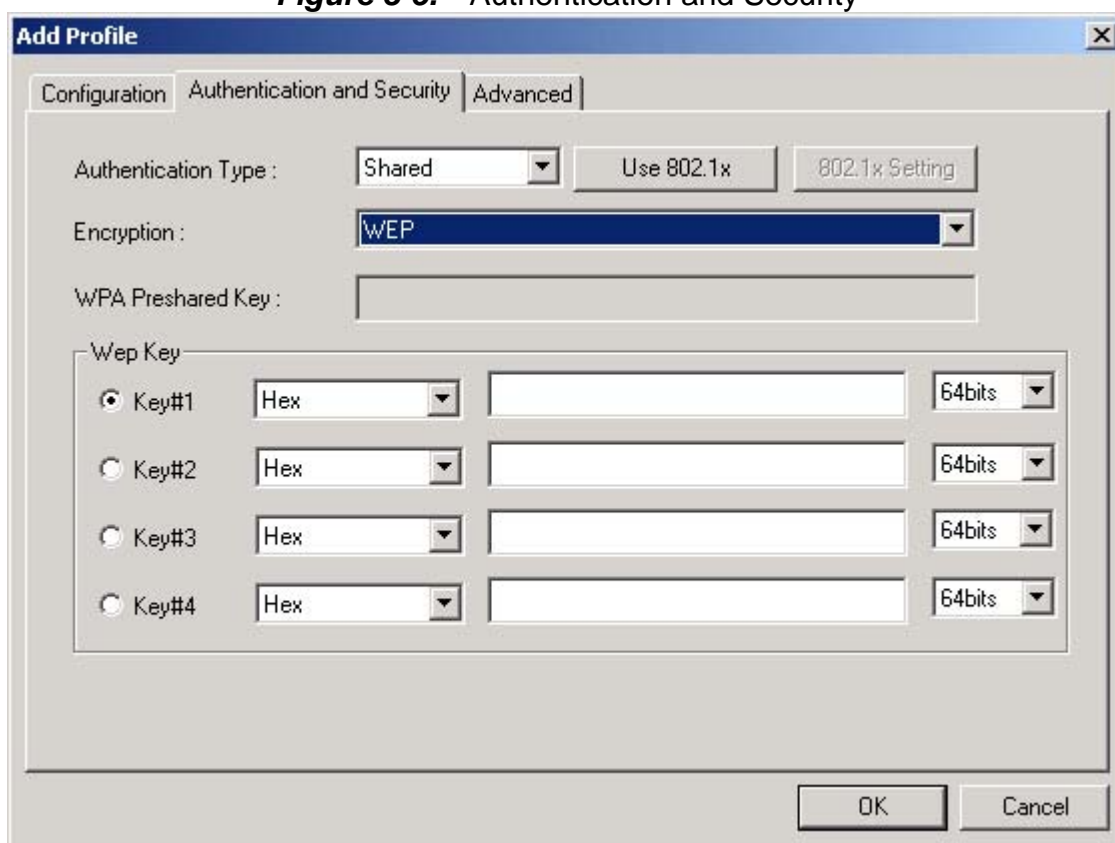
Define the packet length used for fragmentation. Packets larger than value will be fragmented.

### **3-1-2. Add Profile - Authentication and Security**

If an authentication or security setting is configured in a wireless access point or wireless router, it is necessary for the Wireless USB STICK Adapter profile to match the security parameters in order to obtain access and establish a connection. Both WEP Encryption and 802.1X Authentication protocols are supported.



**Figure 3-5. Authentication and Security**



**Table 3-1**

Authentication Type	Security	Secure Key Setting	802.1X Enabled
Open	None	None	YES
	WEP	Key	
Shared	WEP	Key	YES
WPA	TKIP	None	YES
	AES	None	
WPA-PSK	TKIP	WPA-PSK Key	NO
	AES	WPA-PSK Key	
LEAP	None	None	NO

### 3-1-2-1. Authentication and Security

#### Authentication –

Before a station connects to a SSID, the authentication type used by the SSID must be known. Authentication types include OPEN SYSTEM, WAP, WAP-PSK , LEAP and SHARED.

#### Security –

To prevent unauthorized access to data transmitted on the network, WLAN card provide a data encryption of high security. The access point must have the same password and encryption to connect with you. Different authentication types have different level of security. Please refer to **Table 3-1**.

#### WEP Encryption –

To activate the WEP Encryption, choose **WEP Encryption** from the drop-down menu in the Encryption field. Then follow instructions below:



1. Select a Key. (You may specify up to 4 Keys)
2. Select data type as either Hex or ASCII. (Hex = hexadecimal)
3. Enter a WEP key. [For 64-bit: 10 hexadecimal digits, 5 ASCII; For 128-bit: 26 hexadecimal digits, 13 ASCII]
4. Click **OK** to save the settings.

### WPA-PSK Encryption –

To activate WPA-PSK (Preshared Key) Encryption using TKIP or AES, choose WPA-PSK from the drop-down menu in the Encryption field. Then follow instructions below:

1. Enter a Preshared Key. [Key may be up to 64 hexadecimal digits or from 8 to 63 ASCII digits in length]
2. Click **OK** to save these settings.

**LEAP Authentication : enter account number and password.( AP must support this function)**

### 3-1-2-2. 802.1X Setting

To enable 802.1X Authentication, click on the **Use 802.1x** button (see **Figure 3-5** above) and the **802.1X Setting** window will open. From the 802.1x Setting window you can configure authentication parameters such as Tunnel Protocol, ID and Password and Client Certificate or Certificate Chain.

**Figure 3-6** 802.1X Setting – Certification Tab

### Authentication Type –

Choose authentication type from the drop-down menu. Authentication types supported include PEAP, TLS/Smart Card, TTLS, and MD5-Challenge.

**Identity –**

Enter the name of the user account.

**Password –**

The option to specify a password is only available when MD5-Challenge is selected as the authentication types.

**Use Client Certificate –**

Check the **Use Client Certificate** box to confirm if the Client Certificate is correct in the authentication process. This applies only to TLS and TTLS authentication types.

**Tunnel Authentication –**

PEPA and TTLS use two-step authentication method. The first step is that Server sets up a Tunnel with its authentication. No option is need to be set for Station with WLAN card. The second step is to confirm the validity of Station with assigned authentication type in the Tunnel. Data needed for authentication includes Tunnel ID, Tunnel Password, Client Certificate or Server Authentication.

**Protocol:** Use assigned authentication type in the safe tunnel.

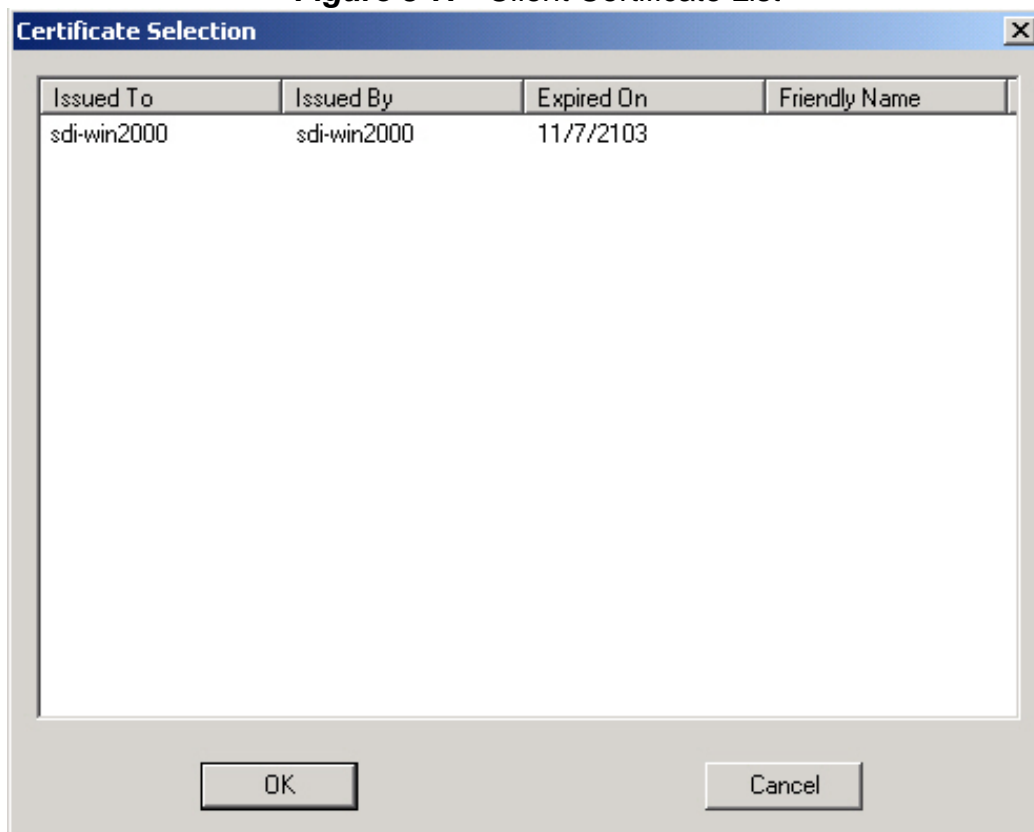
**Tunnel Identity –**

Enter name of user account.

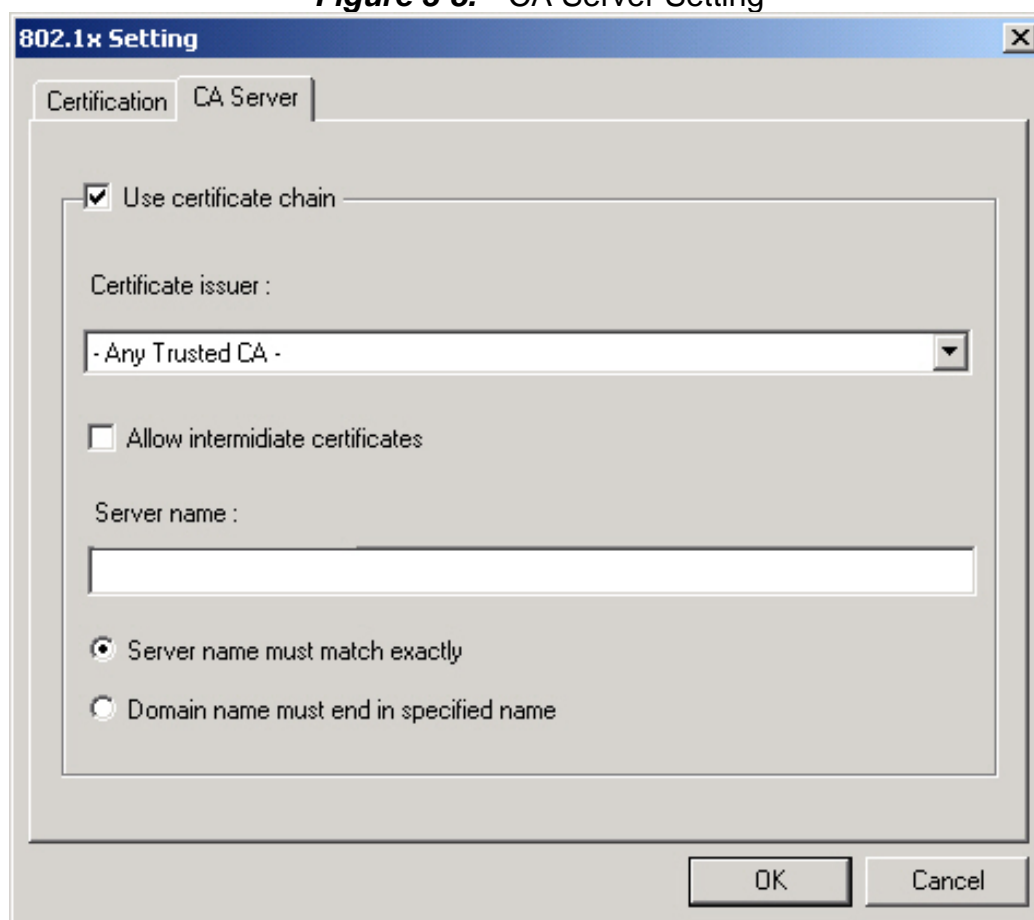
**Password –**

Enter the user account password.

**Figure 3-7.** Client Certificate List



**Figure 3-8.** CA Server Setting



The CA Server is enabled only when TLS, TTLS or PEAP authentication is selected. The Client can verify if such server is reliable and then transmit Client Certificate after the verification is confirmed. (NOTE: Only available if **Use Client Certificate** is checked.)

#### **Verify CA Server -**

1. Confirm if the Server Certificate is issued by an assigned certificate issuer. If **Allow Intermediate Authentication** box is checked, the server certificate can be issued by one intermediate certificate issuer.
2. Check that the server name of server certificate matches the name entered by the user or belongs to the same domain.

#### **Server Certificate –**

Check the **Server Certificate** box to indicate that the Client will confirm whether the CA server is reliable.

#### **Certificate issuer –**

Specify the CA of a server certificate from the drop-down list.

#### **Allow Intermediate Certificates –**

When this option is checked, the certificate issuer can be an issuer recognized by a specific certificate issuer.

#### **Server name –**

This value can be a server name or the name of a domain where the server is located.

**Server name must match exactly –**

Select this option to specify that the server name of server certificate must be the same as **Server Name** or matches the name of domain where the server is located.

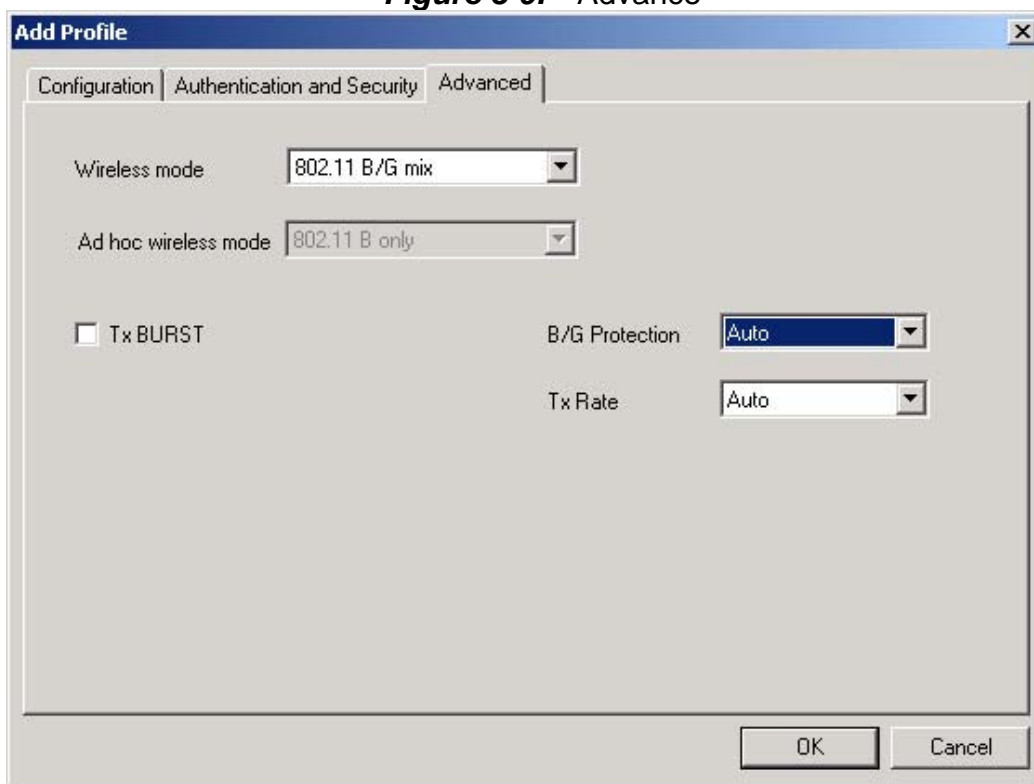
**Domain name must end in specified name –**

Select this option to specify that the certificate issuer must match the domain or secondary domain entered in **Server Name**.

**3-1-3. The Advance Tab**

The **Advanced** tab includes fields of various parameters to review or change drivers. Just click “OK” button to apply any parameter change to the driver in the tab. A reboot is not needed for the WLAN card (see **Figure 3-9**)

**Figure 3-9.** Advance



**Wireless Mode:** Sets infrastructure Protocols, including 802.11 B/G mix and 802.11 B Only.

**Ad Hoc Wireless Mode:** Sets Ad Hoc Wireless Protocols, including 802.11 B/G mix, 802.11 B Only and 802.11 G Only.

**TX Burst:** The longest interval between frames is normally one DIFS while frames are transmitted. When this setting is open, the longest interval between frames is one SIFS that means the system is allowed to transmit higher capacity of data in one interval.

**B/G Protection:** 802.11b uses CCK modulation. 802.11g uses OFDM while CCK modulation for 802.11b is compatible. To prevent data collision between two stations with 802.11b and 802.11g within range of the same Access Point, it is necessary to set 11B/G Protection. This setting only functions when 802.11 B/G mix is selected as Wireless Mode. Three setting are available: AUTO, EABLE and DISABLE.

This is a mechanism implemented to prevent the “Hidden Node” problem, “Hidden Note”

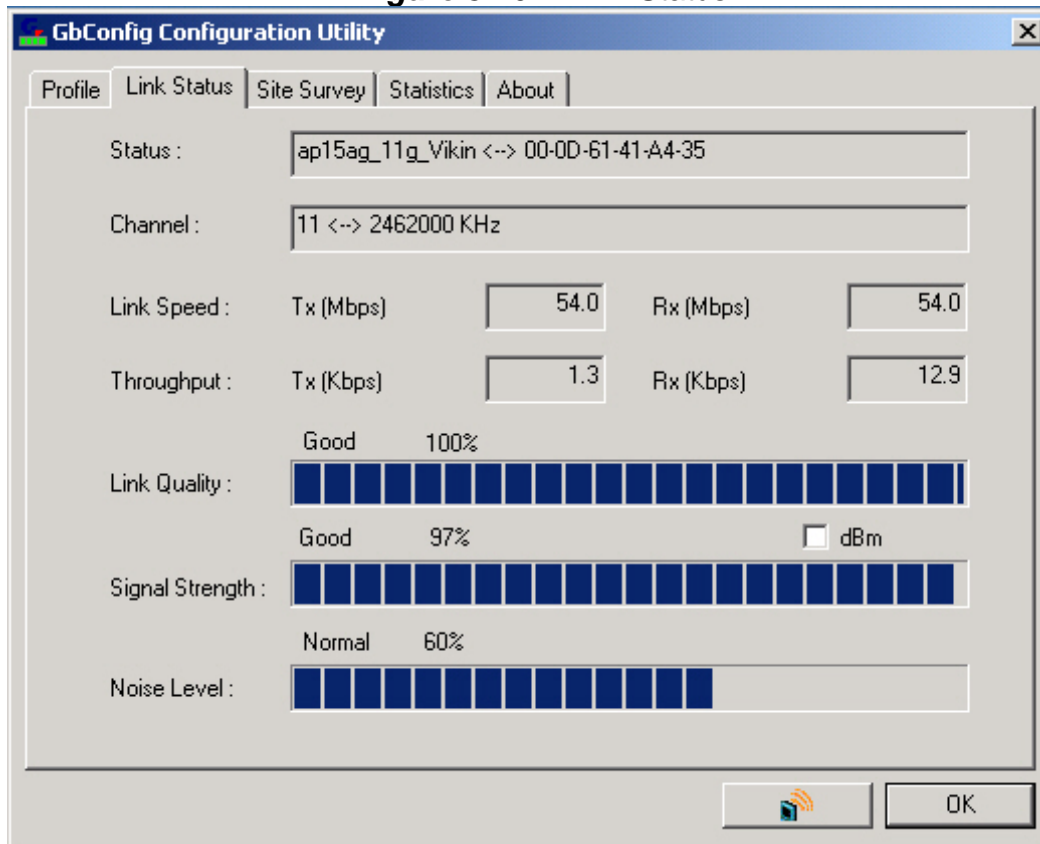
is a situation in which two stations are within range of the same Access Point, but are not within range of each other. Therefore, they are hidden nodes for each other and can not detect each other. This mechanism is a way to prevent data collision when WLAN equipments require transmission.

**TX Rate:** This option adjusts settings of TX Rate according to the setting of “Infrastructure Wireless Mode” and “Ad Hoc Wireless Mode”.

## 3-2. The Link Status Tab

The **Link Status** tab displays information on the current wireless network connection.

**Figure 3-10.** Link Status



### **Status –**

Displays the SSID and MAC address of the associated access point when GN-WBKG is configured in infrastructure mode.

### **Current Channel –**

Displays the wireless channel currently in use ONLY when GN-WBKG is configured in Ad-Hoc mode.

### **Link Speed –**

Indicates the transmission data rate between associated access point and the GN-WBKG.

### **Throughput –**

Indicates the number of successfully transmitted (Tx) and received (Rx) data (in bytes per second).

### **Link Quality –**

Displays how well the GN-WBKG is communicating with wireless access point, wireless router or another wireless device.

### **Signal Strength –**

Displays the signal strength received by RF signal processor in dBm.

### **Noise Level –**

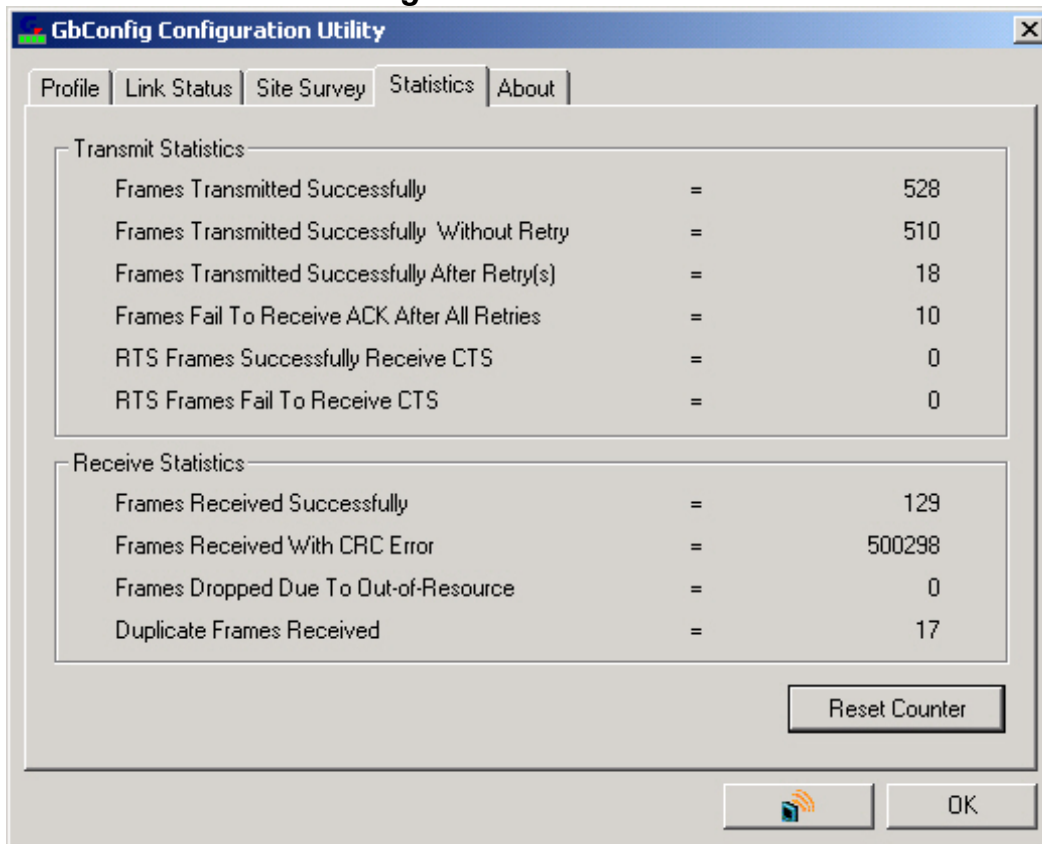
Displays the noise level of connection.



### 3-4. “Statistics” Setting

The **Statistics** tab shows you the number of packets sent and received by the Wireless USB STICK Adapter.

**Figure 3-12.** Statistics

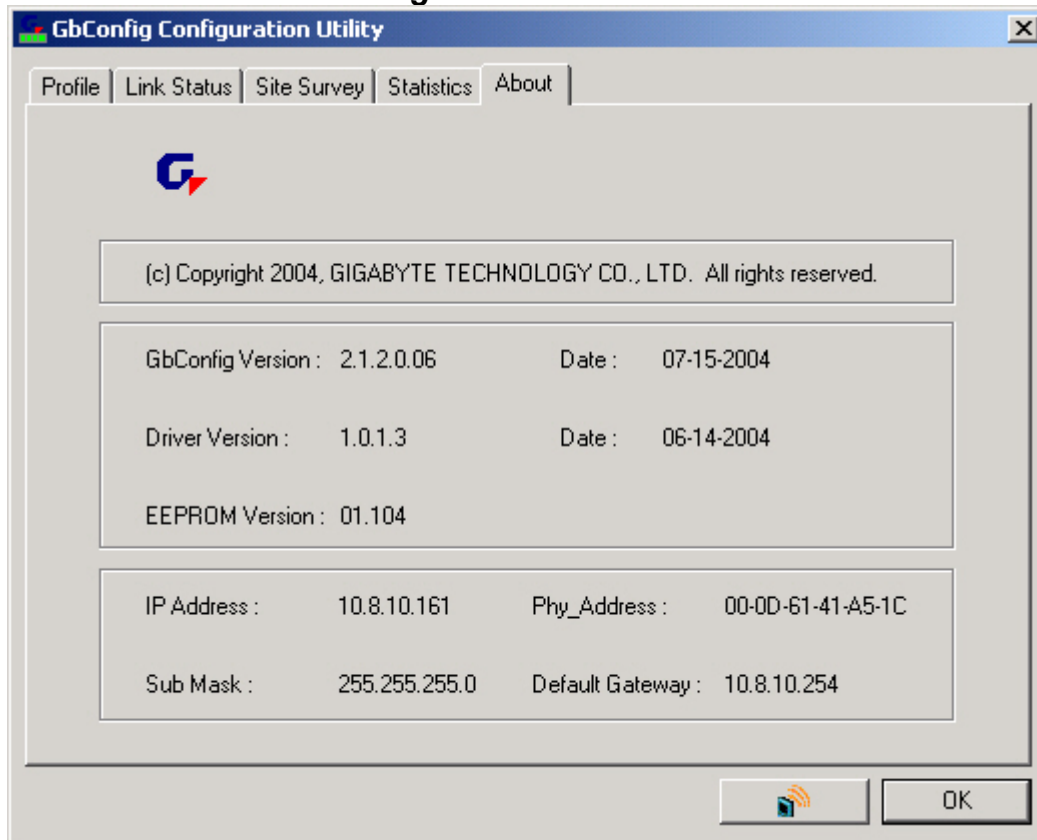




### 3-5. The About Tab

The **About** tab displays information about current drivers and physical MAC address.

**Figure 3-13.** About



## Chapter 4 Troubleshooting

This troubleshooting guide lists questions and possible solutions to some common problems which you may encounter while installing or using GIGABYTE Wireless USB STICK Adapter.

### ◆ Cannot Enable 802.1x, WPA or WPA-PSK

- Windows XP / 2000:
  1. Run the **Aegisl5.exe** file found on the GN-WBKG installation CD.
  2. Click “**Install**”.
- Windows 98SE / ME:
  1. Run **Aegisl2.exe** file found on the GN-WBKG installation CD.  
Click “**Install**”.

### ◆ Connect to the other Wireless Ethernet card

- Check if the other Wireless Ethernet card has been removed before inserting the GN-WBKG Wireless Ethernet card to ensure if it is working.

### ◆ Cannot Establish Connection to a Wireless Network

- Make sure the SSID for the Wireless USB STICK Adapter is the same as the wireless access point or wireless router.
- Make sure the security settings are the same as that of wireless access point / router. If WEP or WPA encryption is enabled, check if the WEP or WPA keys for the GN-WBKG match.
- Check that the MAC address of the Wireless USB STICK Adapter is included in the access point/router’s Authorization Table.

### ◆ Can Connect to an Access Point, but Cannot Access the Internet

- Make sure the security settings are the same as that of wireless access point / router. If WEP or WPA encryption is enabled, check if the WEP or WPA keys for the GN-WBKG match.
- Verify the network settings (IP address, subnet mask, gateway, and DNS) of your computer.
- Check that the proxy server of the WEB browser is correctly set.

### ◆ Poor Link Quality and Weak Signal Strength

- Keep the Wireless USB STICK Adapter away from microwave ovens and large metal objects to avoid radio interference.
- Locate the Wireless USB STICK Adapter as near to the access point as possible.

## Chapter 5 Hardware Specifications

<b>1. SPECIFICATION</b>		GN-WBKG Wireless USB STICK Adapter	
Host Interface	USB 2.0/1.1		
Operating Voltage	5V from Host PC		
<b>2. RF Performance 802.11g(backward compatible to 802.11b)</b>			
Frequency Bands	2412 ~ 2484 MHz (subject to local regulation)		
Modulation Technology	OFDM and DSSS		
Modulation Techniques	64QAM, 16QAM, QPSK, BPSK, CCK, DQPSK, DBPSK		
Data Rates	54, 48, 36, 18,12, 9, 11, 6, 5.5, 2, and 1 Mbps, auto fallback		
Typical Power Consumption	Receive: 270 mA Transmit: 320 mA		
Peak Output Power	20 dBm @ Nominal Temp Range		
Receive sensitivity	Avg.-68dBm @54Mbps; -85dBm@11Mbps		
Antenna	One internal chip antenna		
<b>3.Safety Regulation and Operating Environment</b>			
EMC certification	FCC Part 15 (USA)	DGT (Taiwan)	
	CE (Europe)		
Temperature Range	Operating: 0 ~ 55 deg C, Storing: -20 ~ 65 deg C		
Humidity	Max. 90% Non-condensing		
<b>4. Software Support</b>			
Driver	Windows 98SE/Me/2000/XP		
Security	WPA-PSK(TKIP,AES); 802.1X client for Windows XP ,64/128 bit WEP		
Roaming	Seamless roaming among 802.11b/g access points.		
Management Utility	Monitors the network situation.		
<b>5. Mechanical</b>			
Dimensions	109mm * 25mm * 16mm		
Weight	24 ± 1 g		
Packaging	Packaging specially used by Gigabyte.		
LED indicators	connecting statuses , scanning/the status of data transferring and indicating signal reception .		

\*This specification is subject to change without notice.