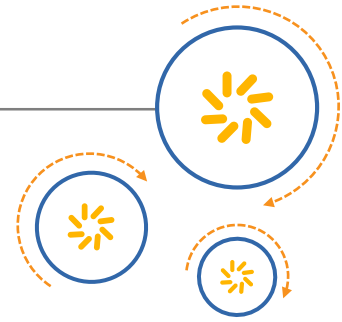




Qualcomm Technologies, Inc.



QM8626 Internal Photographs

80-KA570-10 Rev. A

June 30, 2015

INTERNAL USE ONLY

Confidential and Proprietary – Qualcomm Technologies, Inc.

NO PUBLIC DISCLOSURE PERMITTED: Please report postings of this document on public servers or websites to:
DocCtrlAgent@qualcomm.com.

Restricted Distribution: Not to be distributed to anyone who is not an employee of either Qualcomm Technologies, Inc. or its affiliated companies without the express approval of Qualcomm Configuration Management.

Not to be used, copied, reproduced, or modified in whole or in part, nor its contents revealed in any manner to others without the express written permission of Qualcomm Technologies, Inc.

© 2015 Qualcomm Technologies, Inc. All rights reserved.

Qualcomm is a trademark of Qualcomm Incorporated, registered in the United States and other countries. All Qualcomm Incorporated trademarks are used with permission. Other product and brand names may be trademarks or registered trademarks of their respective owners.

This technical data may be subject to U.S. and international export, re-export, or transfer ("export") laws. Diversion contrary to U.S. and international law is strictly prohibited.

Qualcomm Technologies, Inc.
5775 Morehouse Drive
San Diego, CA 92121
U.S.A.

Revision history

Revision	Date	Description
A	June 2015	Initial release

Contents

1 Certification	5
2 Internal Photographs QM8626	6
2.1 Side A	6
2.2 Side B	7

Tables

Table 1-1 FCC certification	5
Table 1-2 Statement of certification.....	5

1 Certification

Table 1-1 FCC certification

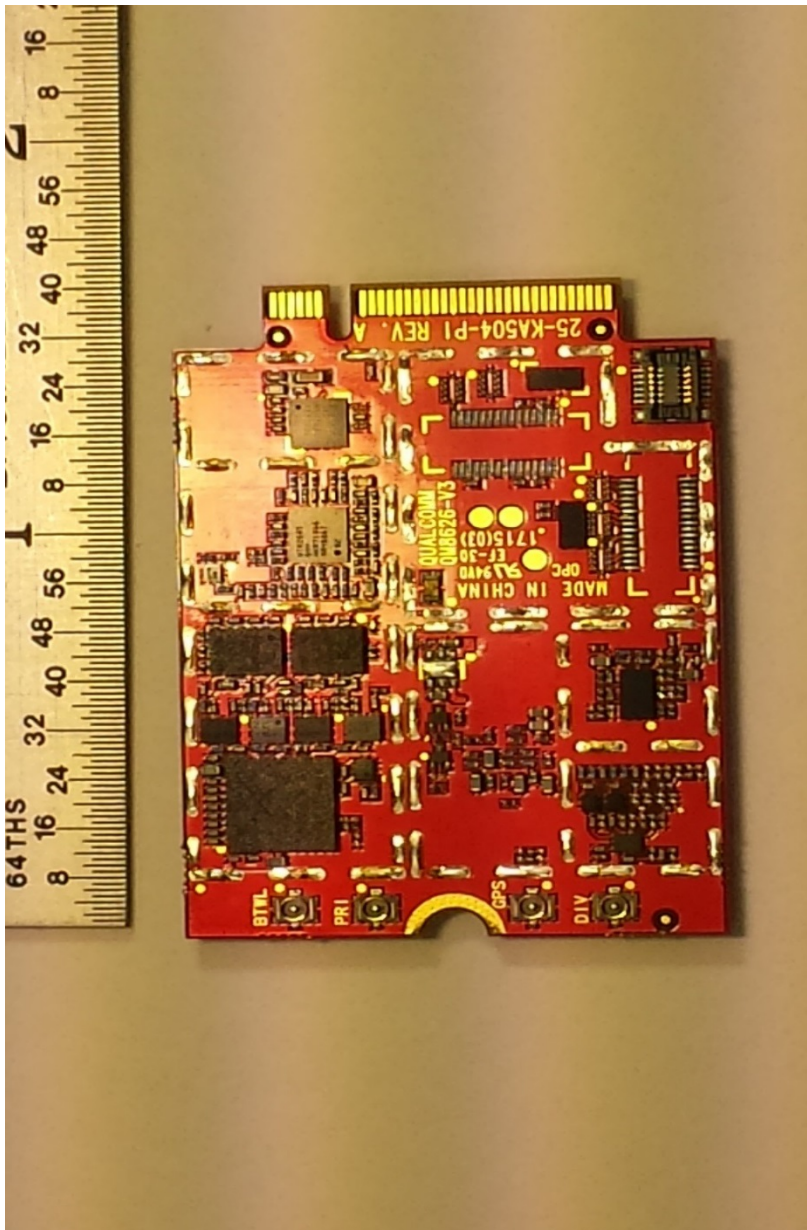
FCC certification	
FCC ID:	J9CQM8626
Model:	QM8626

Table 1-2 Statement of certification

Statement of Certification	
<p>The data, data evaluation, and equipment configuration represented herein are a true and accurate representation of the measurements of the sample's radio frequency interference emissions characteristics as of the dates and at the times of the test under the conditions herein specified.</p>	
Report prepared by:	Qualcomm Technologies, Inc. 5775 Morehouse Drive San Diego, CA 92121-1714

2 Internal Photographs QM8626

2.1 Side A



2.2 Side B

