

File : c:/idx3/SYSTEM/SARMEAS3/data/Normal/98121627\_ZOOM.VLT  
Start : 16-Dec-98 08:07:23 am End : 16-Dec-98 08:20:32 am

Radio Type : QUALCOMM  
Model Number : J9CQCP-1960  
Serial Number : 3104  
Frequency : 1851.25 MHz  
Peak Trans. Pwr : 0.160 W  
Start Trans. Pwr: 0.160 W  
Antenna Type : Helical  
Antenna Posn. : Out  
Phantom Type : Head  
Phantom Posn. : Left Ear  
Scan Type : ZOOM/SAR  
Probe Name : PCTEST  
Field Type : E Field  
Orientation : 0 Degrees

Mixture Type = Brain  
Mixture Dielectric Constant = 42.900  
Mixture Conductivity = 1.650

Comment :  
QUALCOMM QCP PCS PHONE  
CHAN 0025  
PCTEST

Robot : PCTEST

Probe Offset = 0.25 cm  
Sensor Factor = 0.0108  
Conversion Factor = 1.200

PCTEST Amplifier Channel Settings : 0.250 0.233 0.225

Max Location : X = 3.500, Y = -1.000, Z = 0.000 (cm) Value = 10.366

Measured Values (volts) =  
9.622E-003 6.791E-003 4.696E-003 3.460E-003 2.531E-003 1.864E-003  
1.412E-003 1.065E-003 7.954E-004 5.679E-004 4.352E-004 4.257E-004  
2.747E-004 2.522E-004 1.745E-004 1.341E-004 1.052E-004 8.189E-005  
9.767E-005 4.935E-005 4.804E-005

Calc. Voltage @ Surface (Vs) = 0.0138

Voltage @ 1.00 cm (Vt) = 0.0035

Ave. Voltage (Vs+Vt)/2 = 0.0086

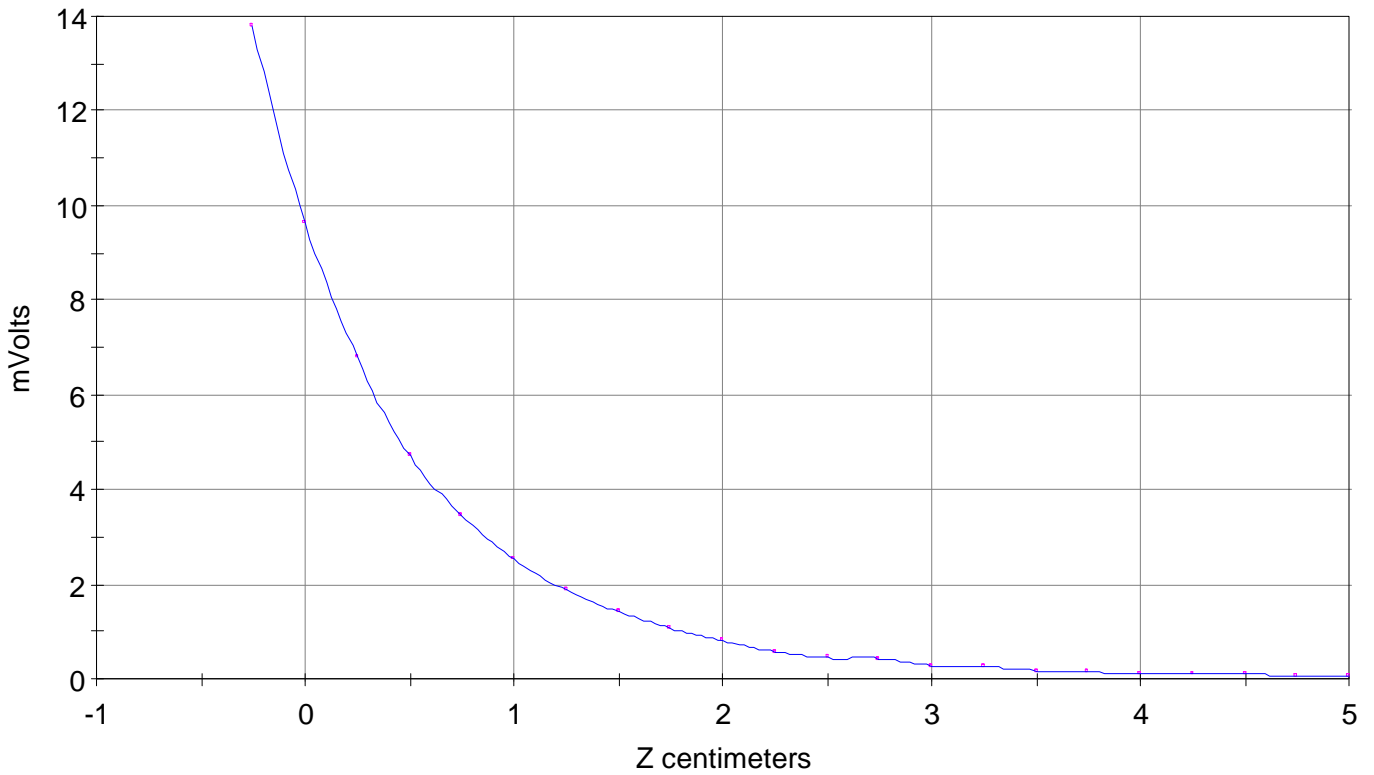
Ave. SAR over 1 g (mW/g) = 0.9575

### SAR Scan

File : 98121627\_ZOOM

Start : 16-Dec-98 08:07:23 am End : 16-Dec-98 08:20:32 am

QUALCOMM/J9CQCP-1960/3104;1851.25MHz;W;Helical/Out;  
Head/Left Ear;ZOOM/SAR;PCTEST/E Field/0 DegreesBrain/42.900/1.650

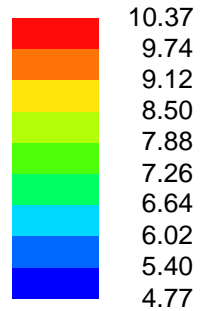
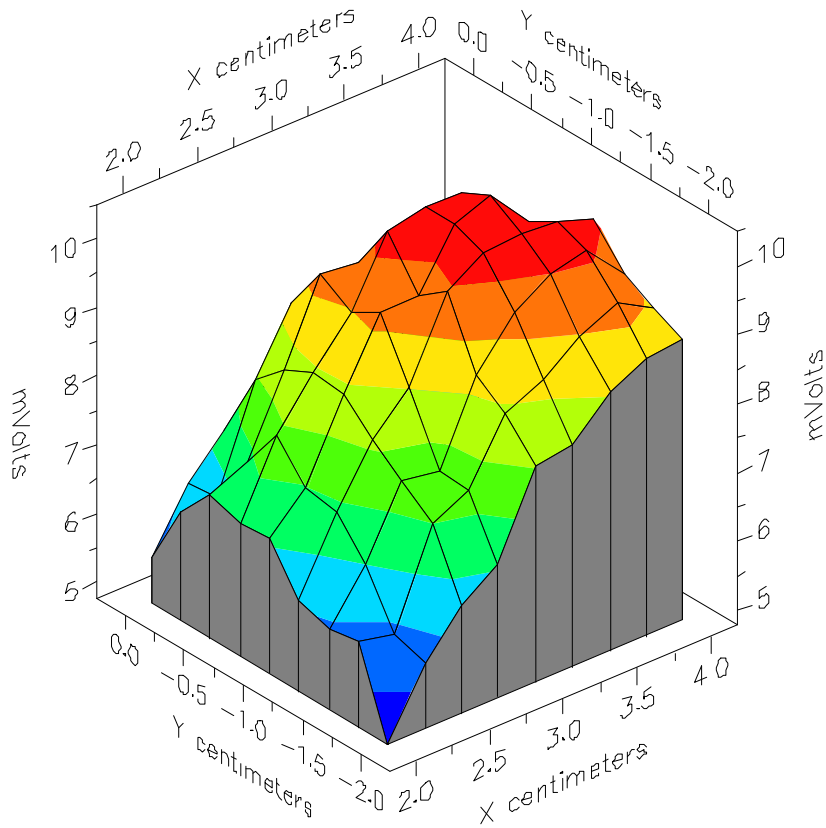


File : 98121627\_ZOOM

Start : 16-Dec-98 08:07:23 am End : 16-Dec-98 08:20:32 am

QUALCOMM/J9CQCP-1960/3104;1851.25MHz;W;Helical/Out;

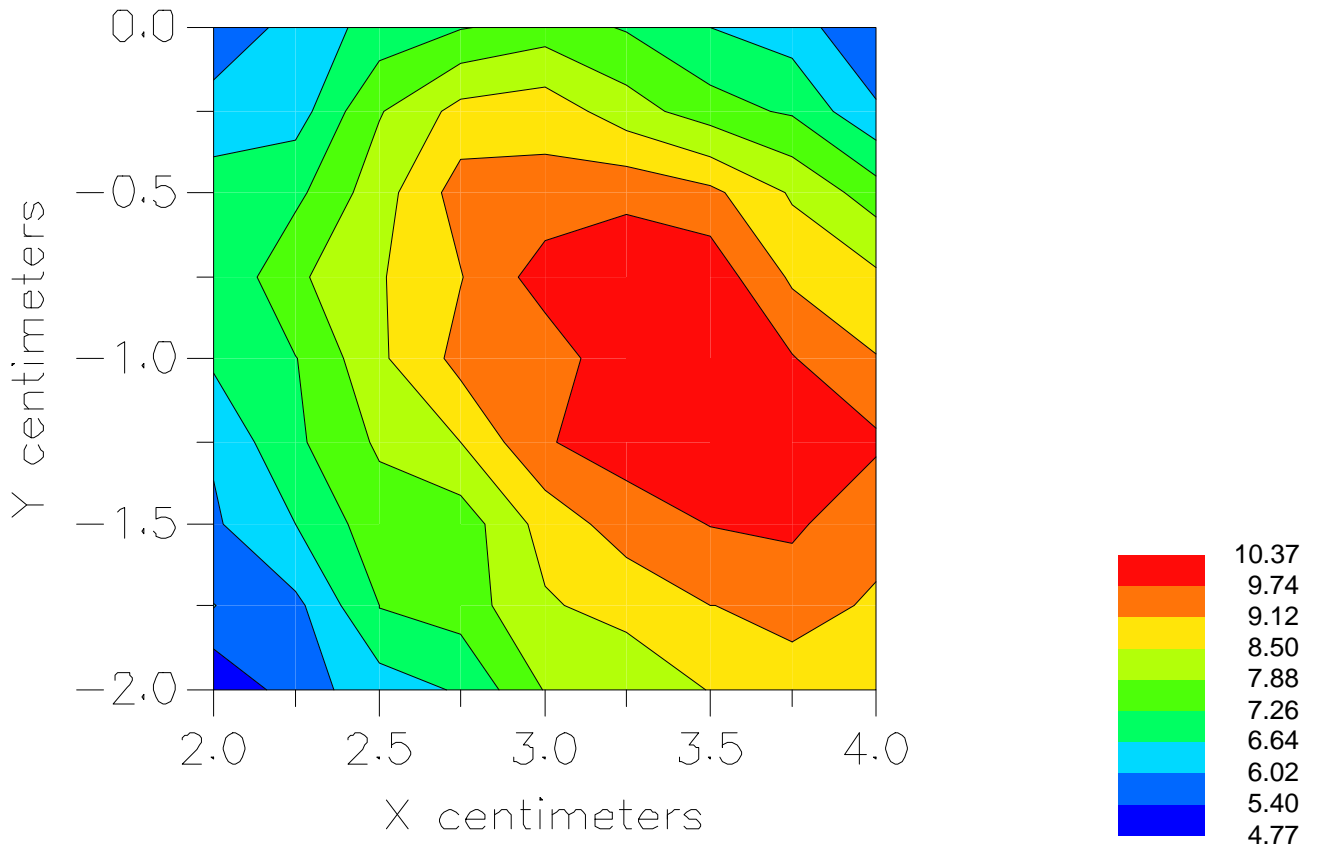
Head/Left Ear;ZOOM/SAR;PCTEST/E Field/0 DegreesBrain/42.900/1.650



File : 98121627\_ZOOM

Start : 16-Dec-98 08:07:23 am End : 16-Dec-98 08:20:32 am

QUALCOMM/J9CQCP-1960/3104;1851.25MHz;W;Helical/Out;  
Head/Left Ear;ZOOM/SAR;PCTEST/E Field/0 DegreesBrain/42.900/1.650



File : c:/idx3/SYSTEM/SARMEAS3/data/Normal/98121632\_ZOOM.VLT  
Start : 16-Dec-98 09:41:11 am End : 16-Dec-98 09:49:44 am

Radio Type : QUALCOMM  
Model Number : JPCQCP-1960  
Serial Number : 3104  
Frequency : 1851.25 MHz  
Peak Trans. Pwr : 0.160 W  
Start Trans. Pwr: 0.160 W  
Antenna Type : Helical  
Antenna Posn. : In  
Phantom Type : Head  
Phantom Posn. : Left Ear  
Scan Type : ZOOM/SAR  
Probe Name : PCTEST  
Field Type : E Field  
Orientation : 0 Degrees

Mixture Type = Brain  
Mixture Dielectric Constant = 42.900  
Mixture Conductivity = 1.650

Comment :  
QUALCOMM QCP PCS PHONE  
CHAN 0025  
PCTEST

Robot : PCTEST

Probe Offset = 0.25 cm  
Sensor Factor = 0.0108  
Conversion Factor = 1.200

PCTEST Amplifier Channel Settings : 0.250 0.233 0.225

Max Location : X = 2.350, Y = 0.500, Z = 0.000 (cm) Value = 13.749

Measured Values (volts) =  
1.275E-002 1.002E-002 7.485E-003 5.659E-003 4.302E-003 3.273E-003  
2.581E-003 1.948E-003 1.535E-003 1.260E-003 1.017E-003 7.730E-004  
6.255E-004 5.290E-004 4.287E-004 4.331E-004 4.234E-004 3.426E-004  
2.704E-004 2.380E-004 2.181E-004

Calc. Voltage @ Surface (Vs) = 0.0166

Voltage @ 1.00 cm (Vt) = 0.0057

Ave. Voltage (Vs+Vt)/2 = 0.0111

Ave. SAR over 1 g (mW/g) = 1.2387

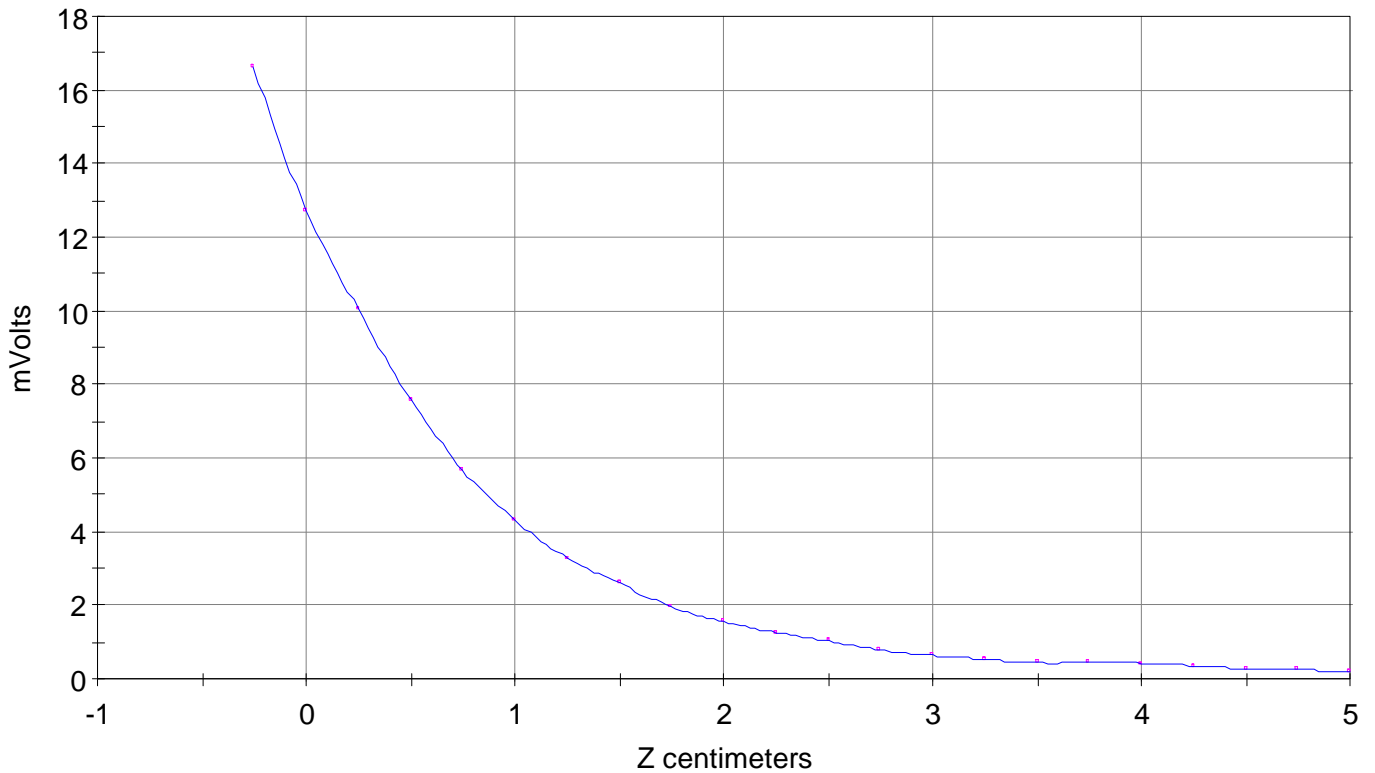
### SAR Scan

File : 98121632\_ZOOM

Start : 16-Dec-98 09:41:11 am End : 16-Dec-98 09:49:44 am

QUALCOMM/J9CQCP-1960/3104;1851.25MHz;W;Helical/In;

Head/Left Ear;ZOOM/SAR;PCTEST/E Field/0 DegreesBrain/42.900/1.650

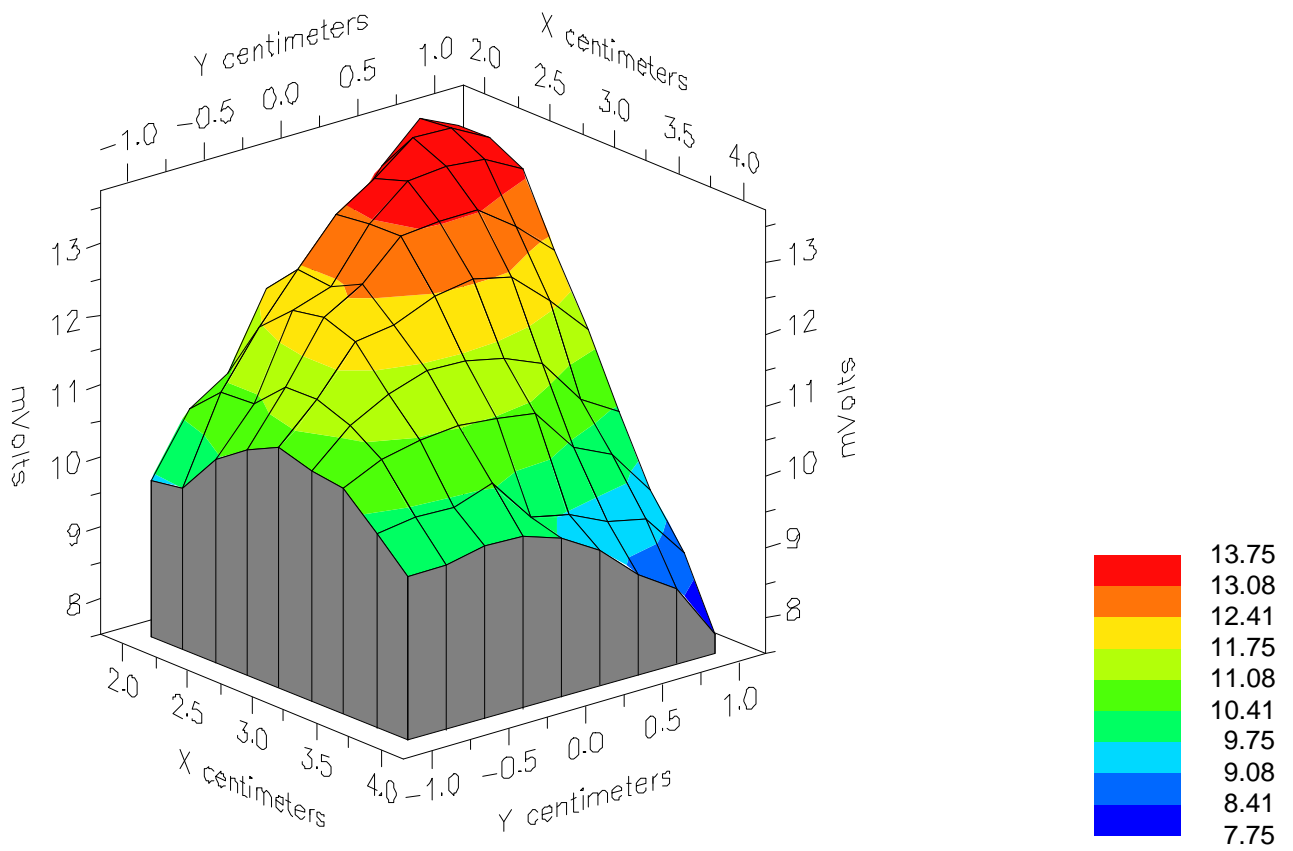


File : 98121632\_ZOOM

Start : 16-Dec-98 09:41:11 am End : 16-Dec-98 09:49:44 am

QUALCOMM/J9CQCP-1960/3104;1851.25MHz;W;Helical/In;

Head/Left Ear;ZOOM/SAR;PCTEST/E Field/0 DegreesBrain/42.900/1.650



File : 98121632\_ZOOM

Start : 16-Dec-98 09:41:11 am End : 16-Dec-98 09:49:44 am

QUALCOMM/J9CQCP-1960/3104;1851.25MHz;W;Helical/In;

Head/Left Ear;ZOOM/SAR;PCTEST/E Field/0 DegreesBrain/42.900/1.650

