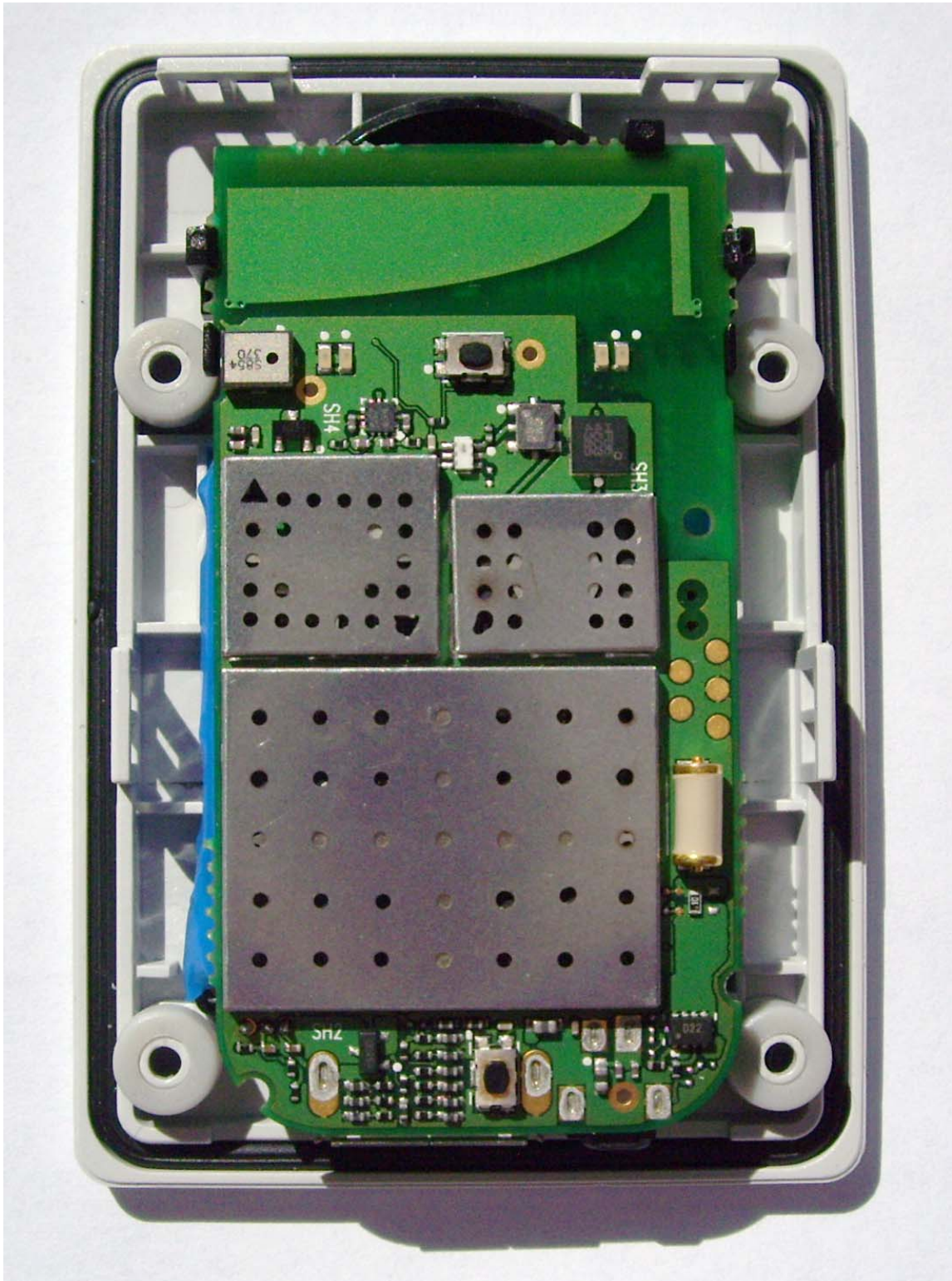


FCC ID: J9CINGEO1

Internal Photographs



INGEO Internal Antenna PCS and GPS, shown at top of PCB

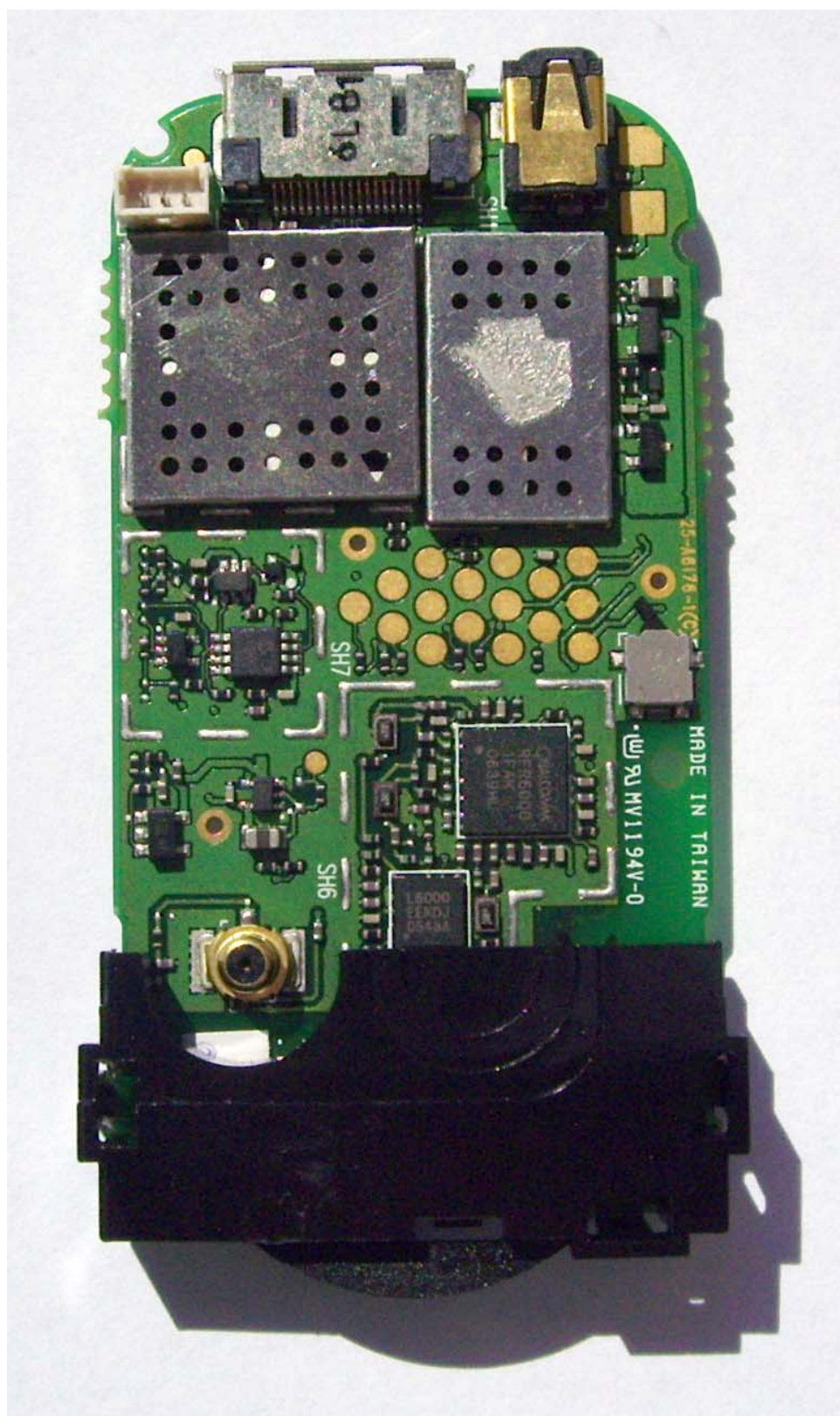


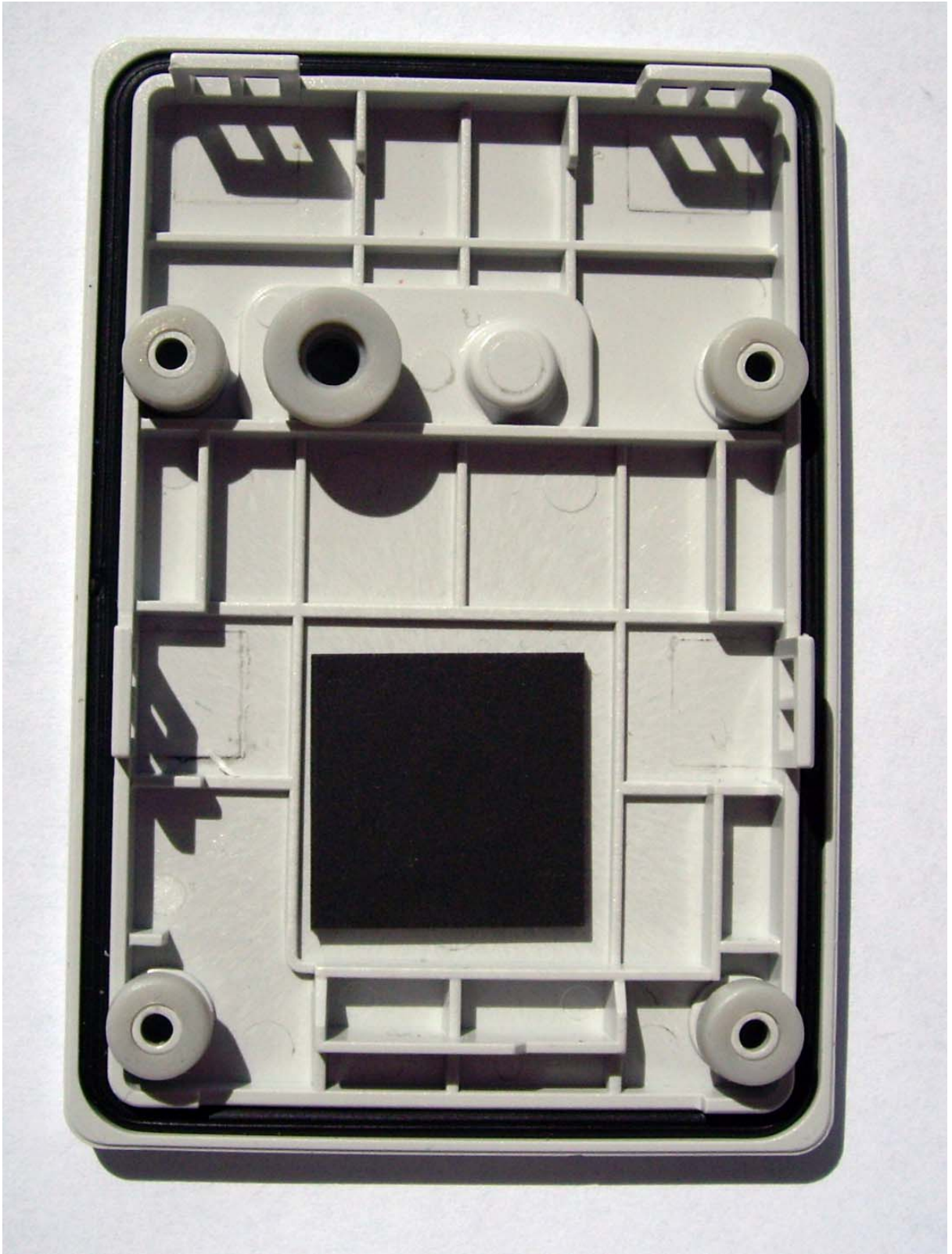
Name: Li-ion Battery
Model: CMA8108
Voltage: 3.7V
Capacity: 700mAh
Charging voltage not exceeding 4.2V
Standard: GB/T 18287-2000

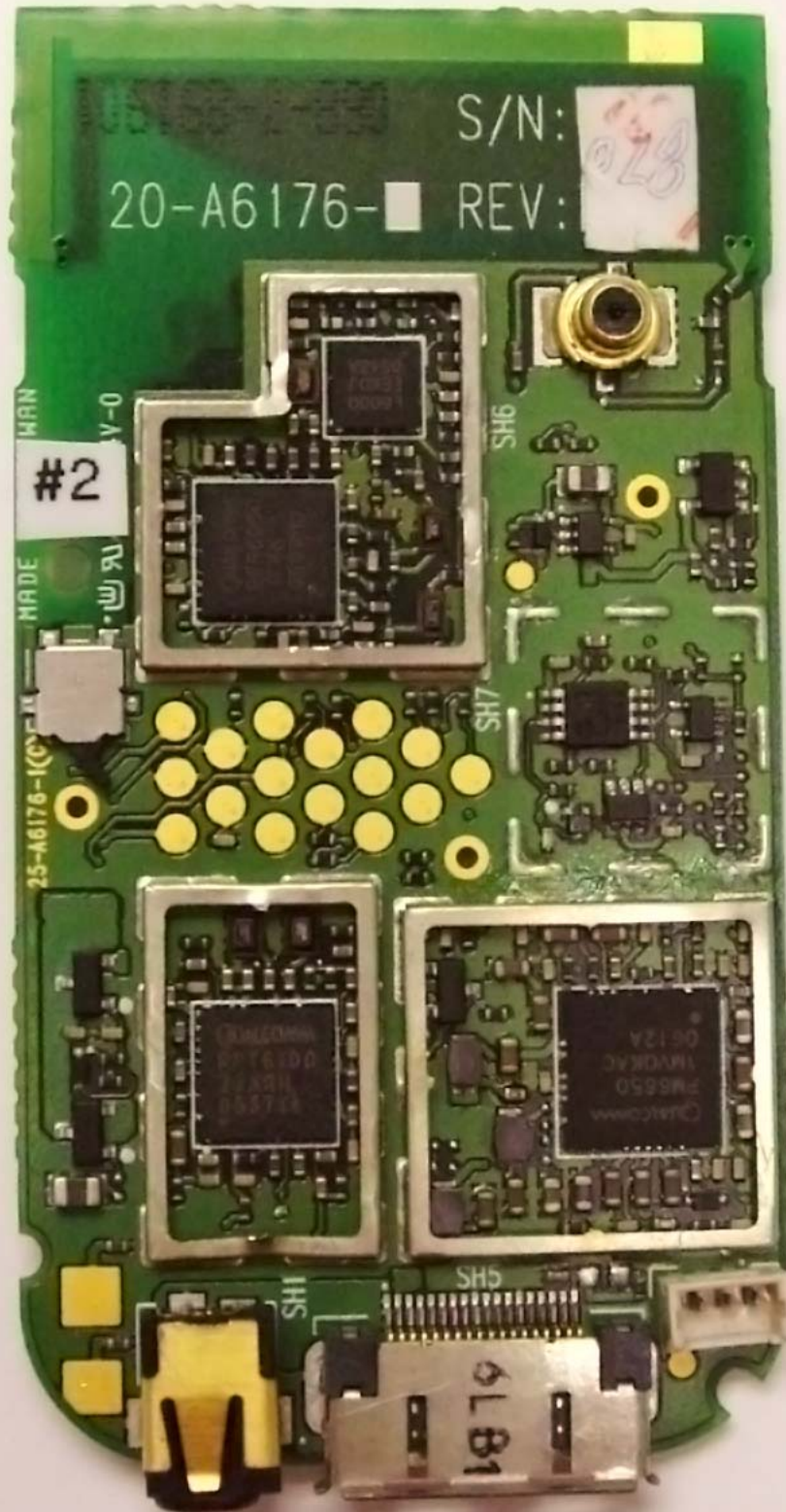
Caution

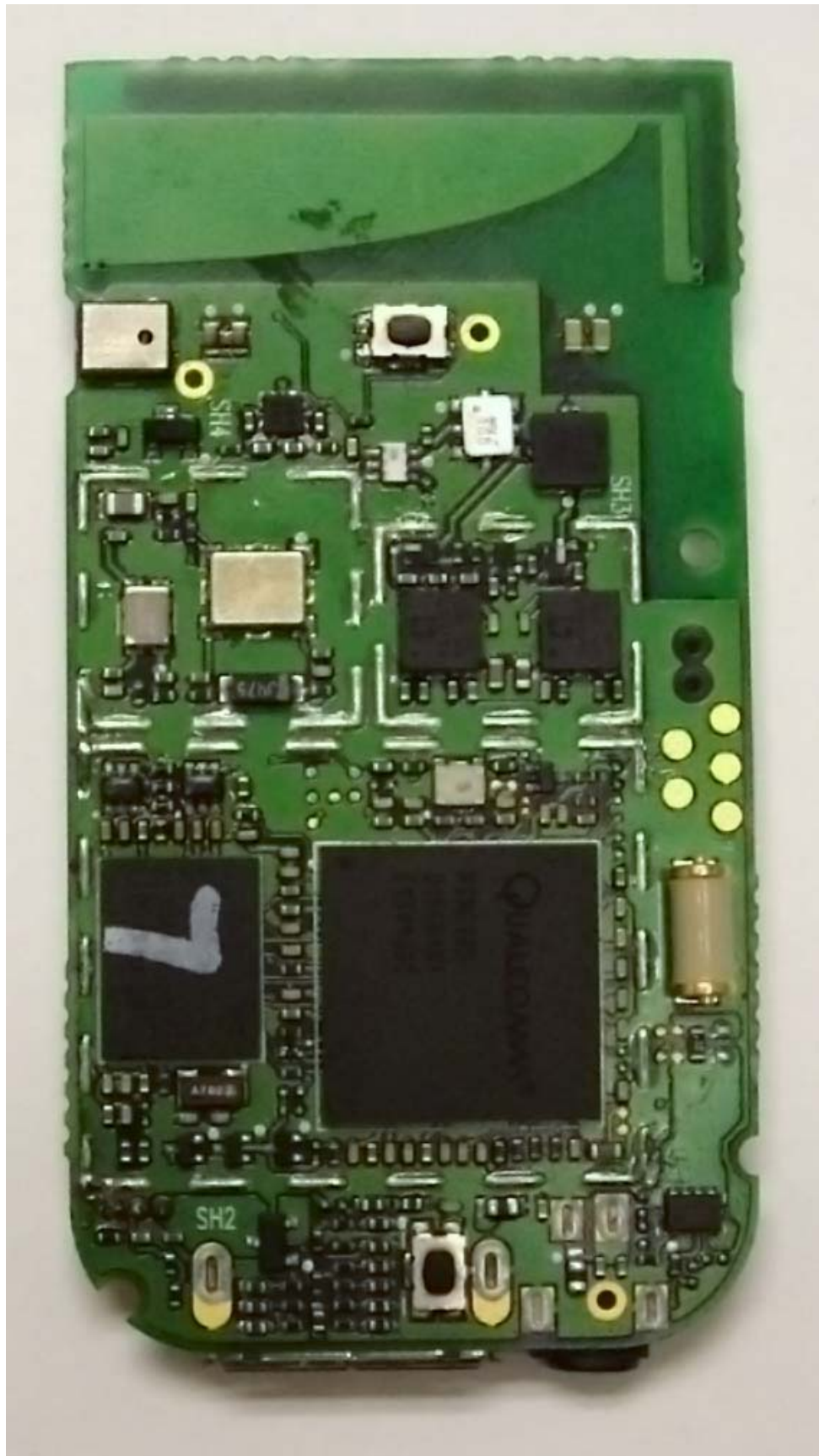
- Use the authorized charger only.
- Never disassemble by yourself.
- Never short-circuit the battery.
- Dispose of the battery properly.
- Expose battery to open flames could cause explosion.













INGEO Internal antenna 800 MHz



INGEO Internal Antenna 800 MHz and Carrier

