



IEM6270 Regulatory Internal Photos

80-H7163-7 Rev. A

July 9, 2011

Submit technical questions at:
regulatory.support@qualcomm.com

QUALCOMM is a registered trademark of QUALCOMM Incorporated in the United States and may be registered in other countries. Other product and brand names may be trademarks or registered trademarks of their respective owners. CDMA2000 is a registered certification mark of the Telecommunications Industry Association, used under license. ARM is a registered trademark of ARM Limited. QDSP is a registered trademark of QUALCOMM Incorporated in the United States and other countries.

This technical data may be subject to U.S. and international export, re-export, or transfer ("export") laws. Diversion contrary to U.S. and international law is strictly prohibited.

**QUALCOMM Incorporated
5775 Morehouse Drive
San Diego, CA 92121-1714
U.S.A.**

**Copyright © 2011 QUALCOMM Incorporated.
All rights reserved.**

Revision history

Revision	Date	Description
A	July 2011	Initial release

1 Internal Photos

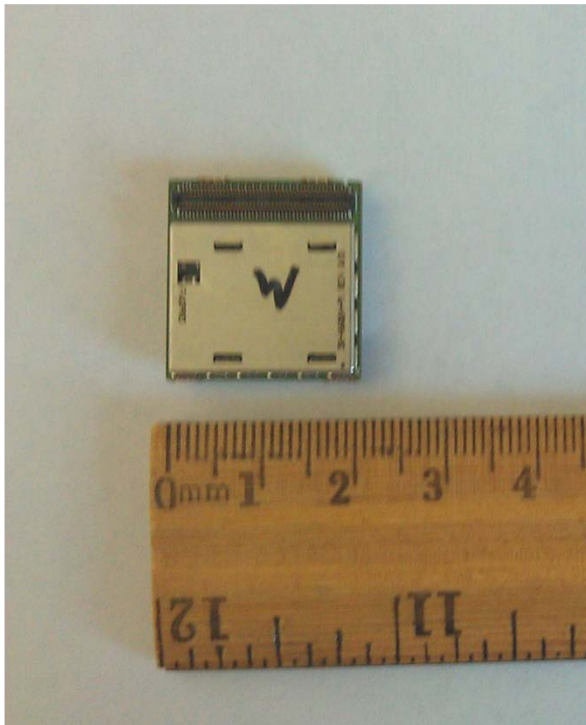


Figure 1 IEM6270 Internal Photo: Front

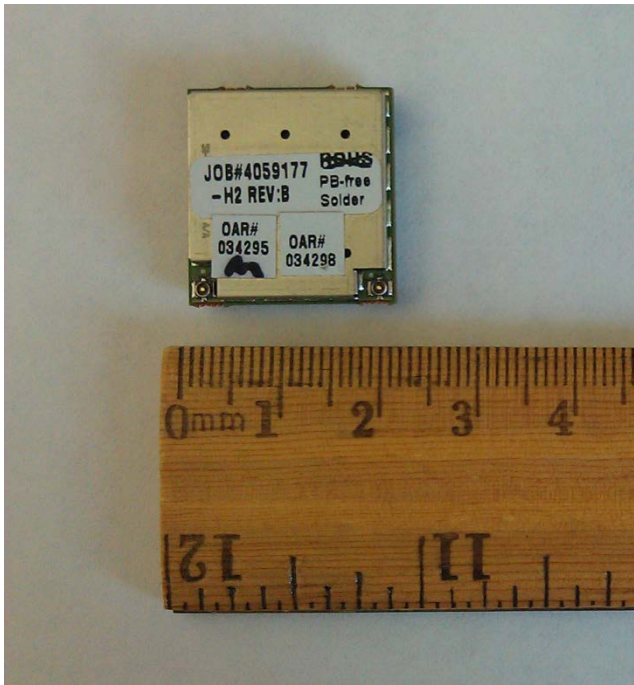


Figure 2 IEM6270 Internal Photo: Rear