



InterLab®

## Photo Report

# GSM/UMTS transceiver IEM6270

**Report Reference:** ODE\_MUS\_QUALCOMM\_1005\_Photo\_2

2<sup>nd</sup> edition

### Test Laboratory:

7 layers AG  
Borsigstrasse 11  
40880 Ratingen  
Germany  
email: [info@7Layers.de](mailto:info@7Layers.de)



DGA-PL-192/99-02

### Note:

The following test results relate only to the devices specified in this document. This report shall not be reproduced in parts without the written approval of the testing laboratory.

7Layers AG  
Borsigstrasse 11  
40880 Ratingen, Germany  
Phone: +49 (0) 2102 749 0  
Fax: +49 (0) 2102 749 350  
[www.7Layers.com](http://www.7Layers.com)

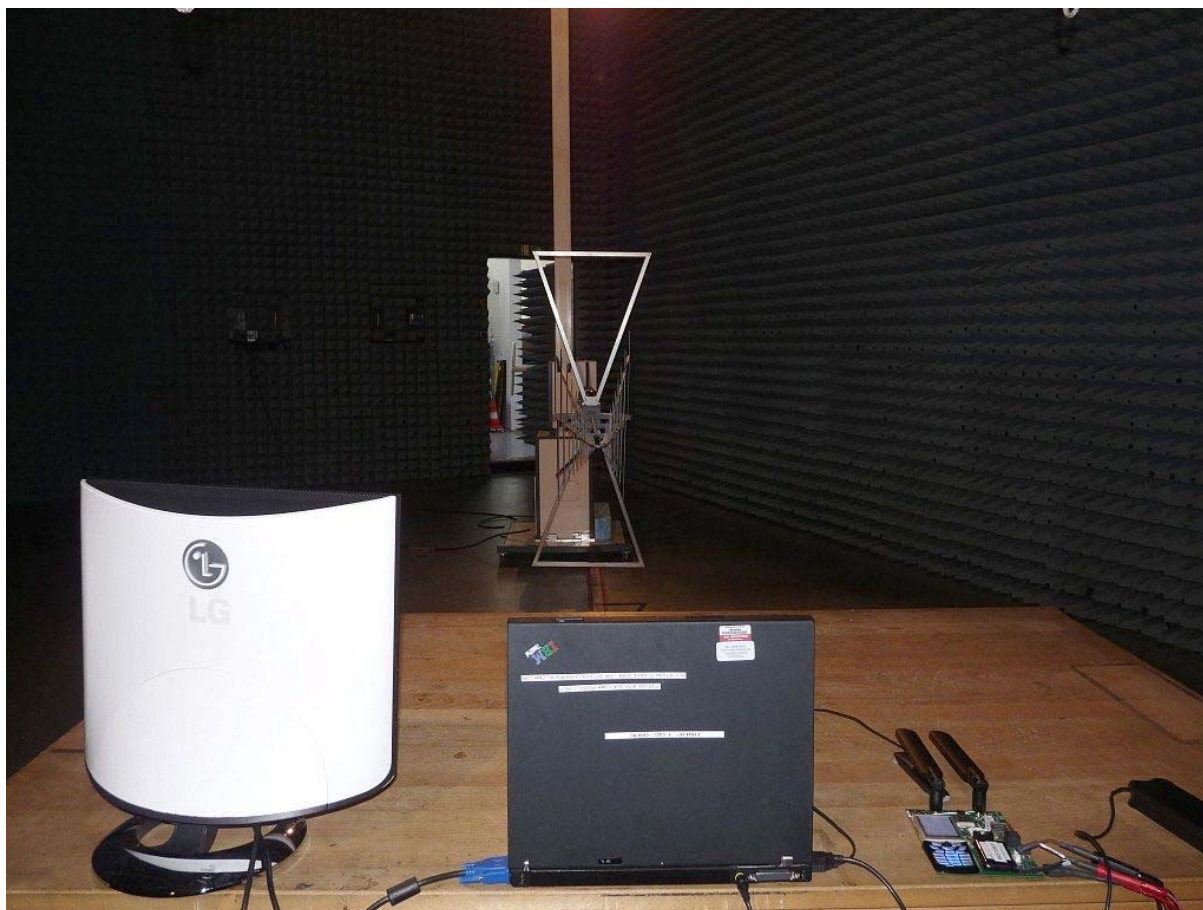
InterLab® is a registered trademark of 7 layers AG

Aufsichtsratsvorsitzender •  
Chairman of the Supervisory Board:  
Markus Becker  
Vorstand • Board:  
Dr. H.-J. Meckelburg

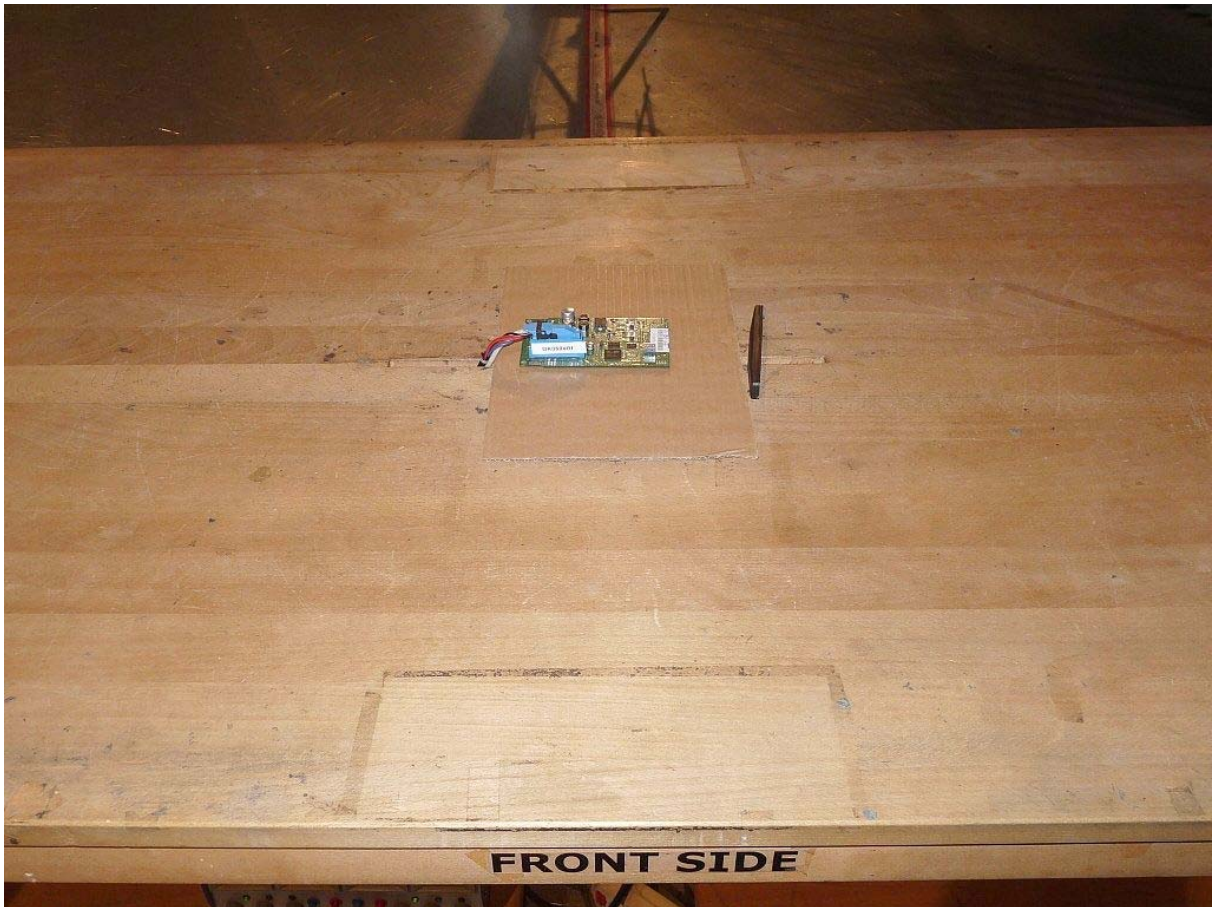
Registergericht • registered in:  
Düsseldorf, HRB 44096  
USt-IdNr • VAT No.:  
DE 203159652  
TAX No. 147/5869/0385

## 1 Photo Report

### 1.1 Photos of test setups



**Photo 1:** Test setup for radiated measurements (Enclosure, 30 MHz to 1 GHz), computer peripheral setup (mounted to Test Board)



**Photo 2:** Test setup for radiated measurements (Enclosure, 30 MHz to 1 GHz), EUT stand-alone (mounted to Test Board)





**Photo 3:** Test setup for radiated measurements (Enclosure, above 1 GHz), EUT and antenna positions

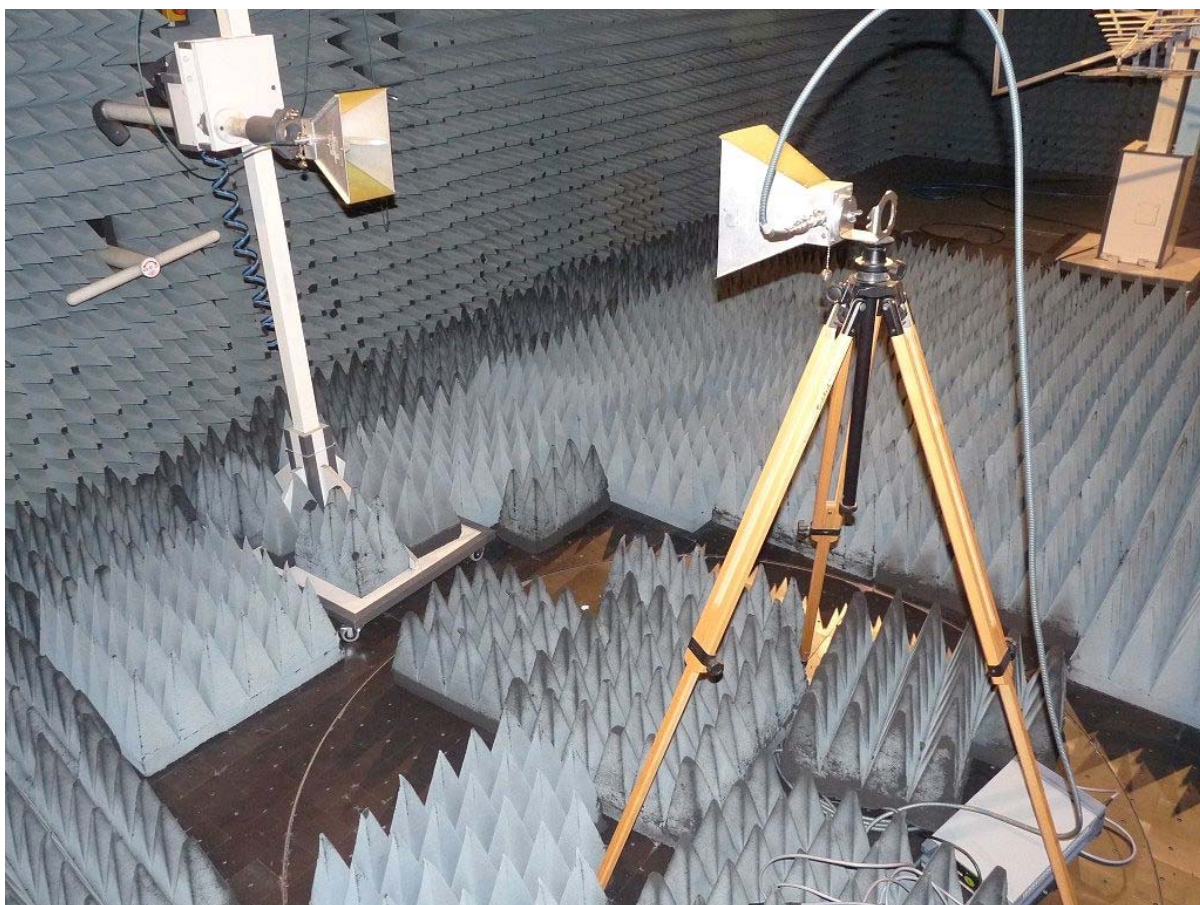


**Photo 4:** Test setup for radiated measurements (Enclosure, above 1 GHz), detail of EUT setup on tilt device





**Photo 5:** Test setup for substitution measurement (below 1 GHz)



**Photo 6:** Test setup for substitution measurement (above 1 GHz)





**Photo 7:** Test setup for conducted measurements (AC Port (power line), powered by external power supply)





**Photo 8:** Test setup for conducted measurements (AC Port (power line), computer peripheral setup)

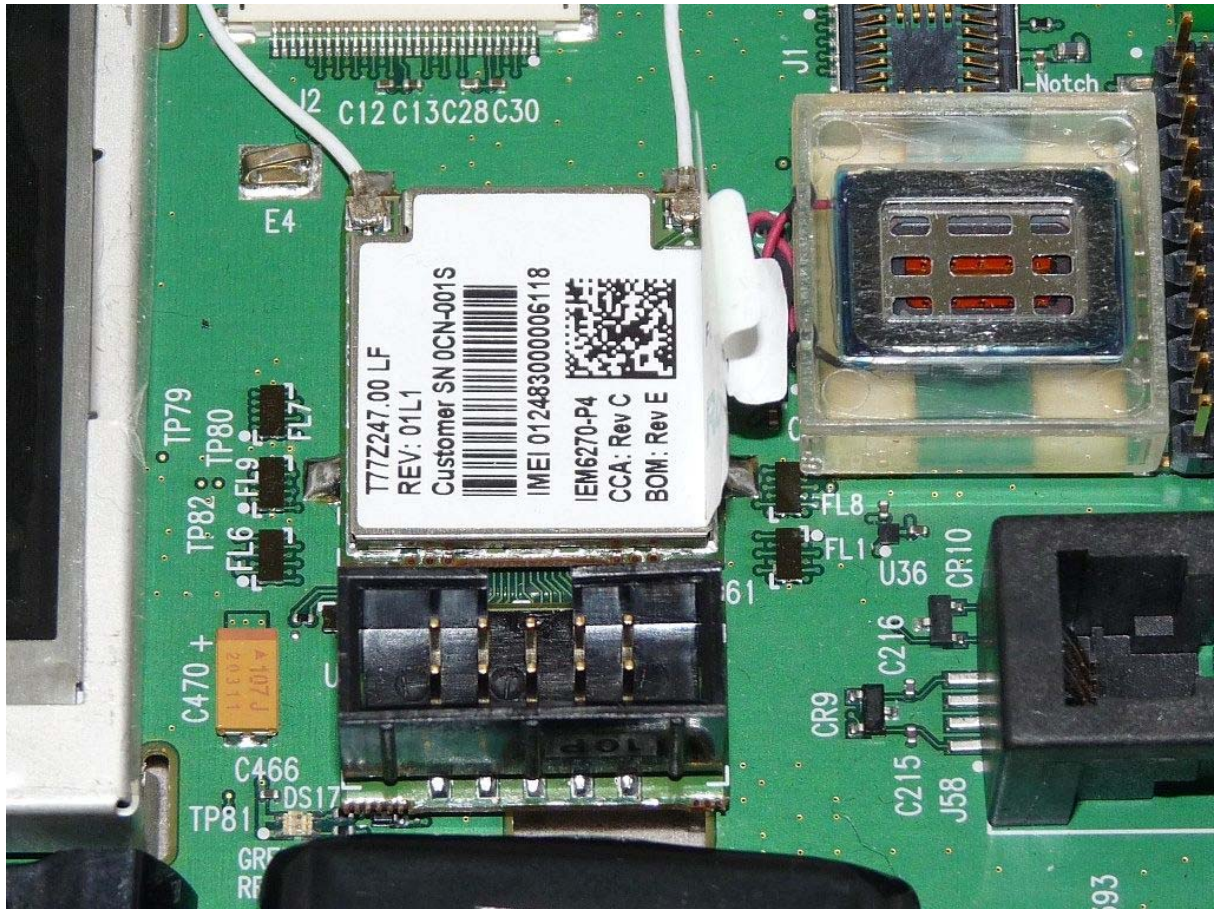
## 1.2 Photos of the EUT

Internal photos of the EUT (e.g. without shielding) are not subject to this report. Please refer to documentation of the applicant.



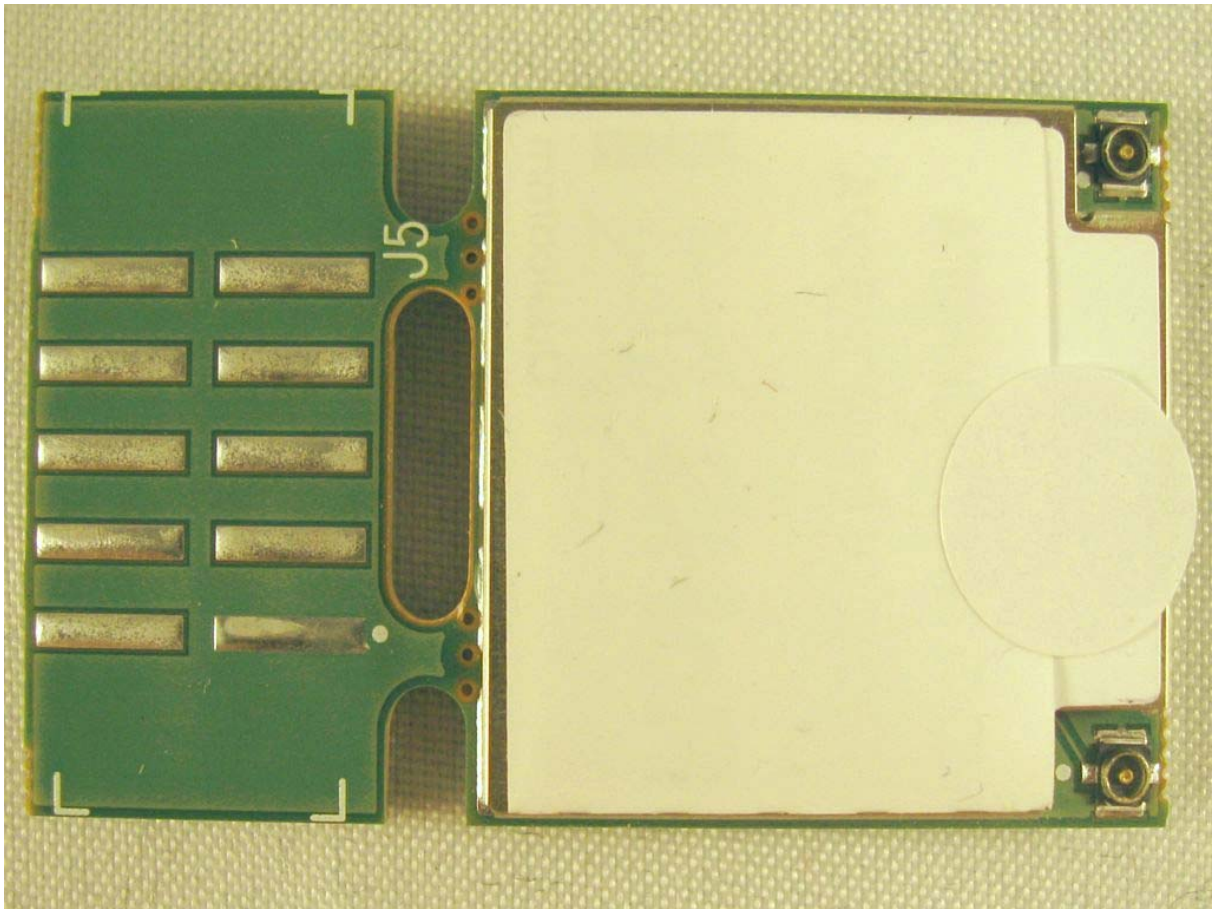
**Photo 9:** EUT mounted to Test Board



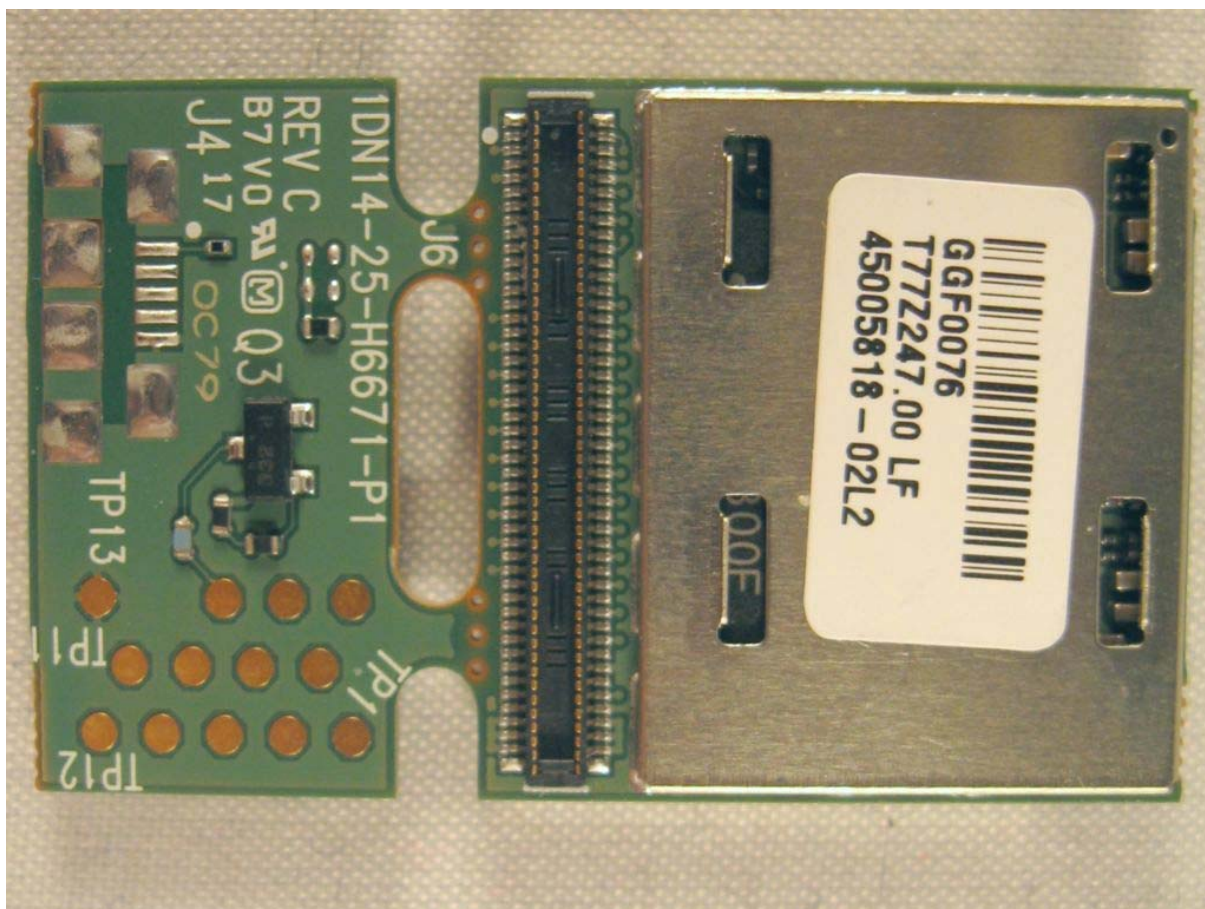


**Photo 10:** EUT mounted to Test Board, detailed view





**Photo 11:** EUT (top side, the photo does not show a tested sample)



**Photo 12:** EUT (bottom side, the photo does not show a tested sample)