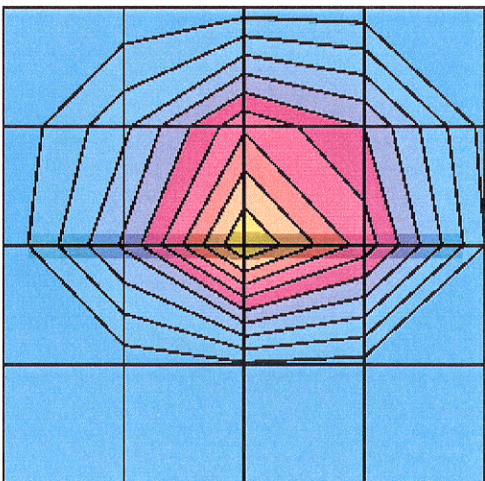
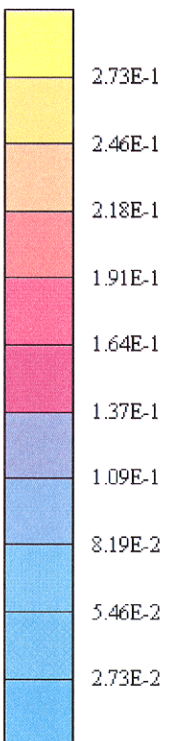


GS USER TERMINAL SAR REPORT

Appendix A

SAR_{Tot} [mW/g]

System Validation 4-28-99, target value = 0.399 +/- 5%

SAR(1g): 0.381 [mW/g] ± 0.28 dB, SAR(10g): 0.196 [mW/g] ± 0.27 dB

Cubes (2) (Worst-case extrapolation)

Coarse: Dx = 20.0, Dy = 20.0, Dz = 10.0

Generic Twin Phantom; Flat Section

Probe: ET3DV5 - SN1348; ConvF(5.00,5.00,5.00)

Brain 1800 MHz: $\sigma = 1.69$ [rho/m] $\epsilon_r = 41.0$ $\rho = 1.00$ [g/cm³]; Powerdrift: -0.02 dB

File Name: Validation 1800 MHz 4-28-99.DA3

Operator: DWS