



# ***Gobi3000™ Module Regulatory Internal Photos***

**80-N2162-206 Rev. A**

**July 14, 2010**

---

**Submit technical questions to:  
regulatory.support@qualcomm.com**

QUALCOMM is a registered trademark of QUALCOMM Incorporated in the United States and may be registered in other countries. Other product and brand names may be trademarks or registered trademarks of their respective owners. CDMA2000 is a registered certification mark of the Telecommunications Industry Association, used under license, ARM is a registered trademark of ARM Limited. QDSP is a registered trademark of QUALCOMM Incorporated in the United States and other countries.

This technical data may be subject to U.S. and international export, re-export, or transfer (“export”) laws. Diversion contrary to U.S. and international law is strictly prohibited.

QUALCOMM Incorporated  
5775 Morehouse Drive  
San Diego, CA 92121-1714  
U.S.A.

Copyright © 2010 QUALCOMM Incorporated.  
All rights reserved.

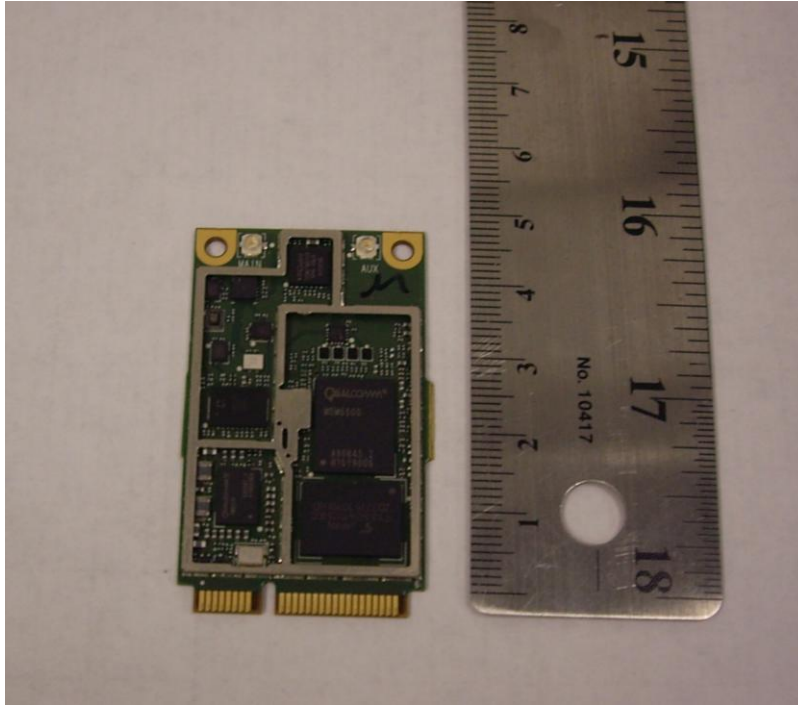
July 14, 2010

Gobi3000™ Module Regulatory Internal Photos  
80-N2162-206 Rev. A

### Revision History

Date	Change Description	Revision	Editor(s)
07/14/2010	Initial Release	A	Paul Jayne

**Figure 1 Gobi3000 Module Top View Internal Photograph (Shield Removed)**



**Figure 2 Gobi3000 Module Bottom View External Photograph (Label Removed)**

