



# ***Gobi™2000 Module Regulatory Internal Photos***

**80-VN379-206 Rev. A**

**December 5, 2008**

---

**Submit technical questions to:  
[regulatory.support@qualcomm.com](mailto:regulatory.support@qualcomm.com)**

QUALCOMM is a registered trademark of QUALCOMM Incorporated in the United States and may be registered in other countries. Other product and brand names may be trademarks or registered trademarks of their respective owners. CDMA2000 is a registered certification mark of the Telecommunications Industry Association, used under license, ARM is a registered trademark of ARM Limited. QDSP is a registered trademark of QUALCOMM Incorporated in the United States and other countries.

This technical data may be subject to U.S. and international export, re-export, or transfer (“export”) laws. Diversion contrary to U.S. and international law is strictly prohibited.

QUALCOMM Incorporated  
5775 Morehouse Drive  
San Diego, CA 92121-1714  
U.S.A.

Copyright © 2008 QUALCOMM Incorporated.  
All rights reserved.

## Terms and Conditions of Usage

This document may refer to or describe parts whose manufacture, use, sale, offer for sale, or importation into the United States are limited or prohibited by one or more U.S. Federal Court injunctions against QUALCOMM Incorporated. This document is not to be construed as an offer to sell such parts for use or importation into the U.S., nor should it be construed as assistance in making, using, selling, offering to sell, or the importation of any product in the U.S. containing such parts. This document is intended solely to provide information for those products that are outside the scope of the injunction. Recipient's download and/or use of the information in this document constitutes agreement with these terms.

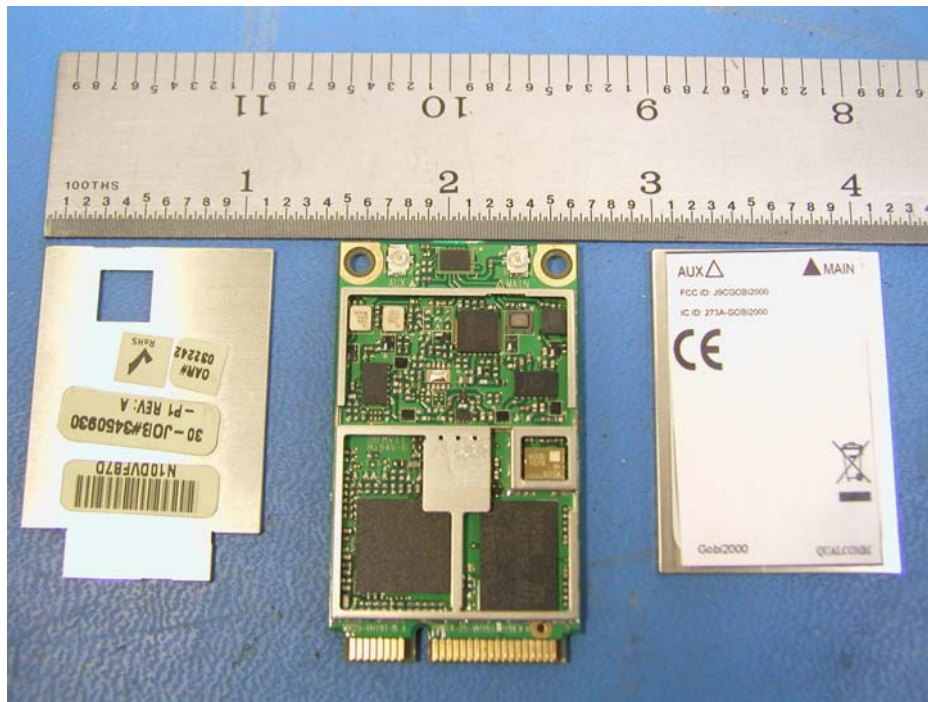
December 5, 2008

Gobi™2000 Module Regulatory Internal Photos  
80-VN379-206 Rev. A

### Revision History

Date	Change Description	Revision	Editor(s)
12/5/08	Initial Release	A	John Forrester

**Figure 1 Gobi™2000 Module Front Internal Photograph (Shields Removed)**



**Figure 2 Gobi™2000 Module Front Internal Photograph (Shields installed)**

