

***Exhibit 8 Fenway***  
***FCC Label and Location***

<b>FCC Part 22 &amp; 24 Certification</b>	
FCC ID:	<b>J9CFENWAY-1</b>
Model:	<b>Fenway</b>

<b>STATEMENT OF CERTIFICATION</b>	
<i>The data, data evaluation and equipment configuration represented herein are a true and accurate representation of the measurements of the sample's radio frequency interference emissions characteristics as of the dates and at the times of the test under the conditions herein specified.</i>	
Report Prepared by:	QUALCOMM Incorporated 5775 Morehouse Drive San Diego, CA 92121-1714



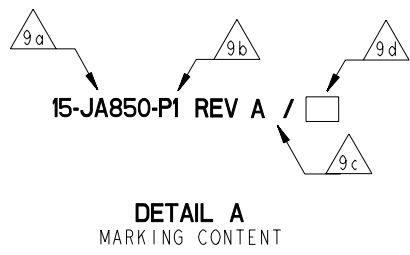
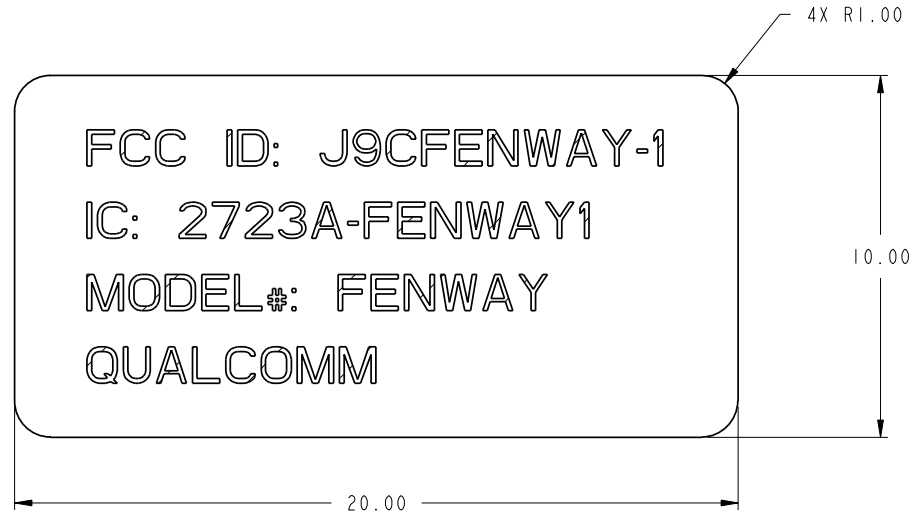
DWG NO.	15-JA850	SH	1	REV	A
REVISIONS					
REV	DESCRIPTION	DATE	APPROVED		
A	INITIAL RELEASE	---	-----		

NOT TO BE USED, COPIED, REPRODUCED IN WHOLE OR IN PART, NOR ITS CONTENTS REVEALED IN ANY MANNER TO OTHERS WITHOUT THE EXPRESS WRITTEN PERMISSION OF QUALCOMM.

THIS TECHNICAL DATA MAY BE SUBJECT TO U.S. AND INTERNATIONAL EXPORT, RE-EXPORT OR TRANSFER ("EXPORT") LAWS. DIVERSION CONTRARY TO U.S. AND INTERNATIONAL LAW IS STRICTLY PROHIBITED.

QUALCOMM IS A REGISTERED TRADEMARK OF QUALCOMM INCORPORATED IN THE UNITED STATES AND MAY BE REGISTERED IN OTHER COUNTRIES. OTHER PRODUCT AND BRAND NAMES MAY BE TRADEMARKS OR REGISTERED TRADEMARKS OF THEIR RESPECTIVE OWNERS.

TABLE I			
LABEL DASH NO.	ARTWORK REVISION	ARTWORK LAYER NO.	COLOR
-PI	A	I	PANTONE BLACK C



-PI

12. THIS DEVICE/ITEM SHALL MEET THE REQUIREMENTS OF EUROPEAN DIRECTIVE 2002/95/EC ON THE RESTRICTION OF THE USE OF CERTAIN HAZARDOUS SUBSTANCES IN ELECTRICAL AND ELECTRONIC EQUIPMENT. (ROHS)
  11. ARTWORK WAS CREATED IN ADOBE ILLUSTRATOR 13.0. DEVIATION FROM SPECIFIED FONTS NOT PERMITTED WITHOUT PRIOR APPROVAL FROM QUALCOMM.
  10. FOR ARTWORK, USE ELECTRONIC DATA AW15-JA850-PI WITH APPROPRIATE DASH NUMBER AND CURRENT REVISION. THE ARTWORK DEPICTED ON THIS DRAWING IS FOR REPRESENTATION PURPOSES ONLY. ACTUAL ILLUSTRATOR ARTWORK FILE MAY BE DIFFERENT.
- BAG AND TAG ITEM AS 15-JA850 AND APPROPRIATE DASH NO. AND REV LETTER OF DWG/PL. MARKING SHALL HAVE 1.5 TO 4.1 HIGH CHARACTERS. SEE DETAIL A FOR MARKING CONTENT.

- a. PART NUMBER
- b. APPROPRIATE DASH NUMBER
- c. DRAWING REVISION LEVEL
- d. PARTS LIST REVISION LEVEL PER APPROPRIATE REQUIRED DOCUMENTS LIST (RDLI)

- LABELS SHALL BE PRINTED AND APPLIED PER ORDER AS NEEDED.
  - LABEL INFORMATION SHALL BE PRINTED WITH THERMAL PRINTER USING BLACK RIBBON. FIRST SURFACE PRINTED.
  6. MATERIAL: E-HTLW100 WHITE POLYESTER FILM THERMAL PRINTER PAPER WITH ACRYLIC PERMANENT ADHESIVE. 0.13 TOTAL THICKNESS.
  5. QUALCOMM SUPPLIED ELECTRONIC DATABASES ARE FOR REFERENCE ONLY. DIMENSIONAL INFORMATION ON CURRENT REVISION OF RELEASED DRAWING TAKES PRECEDENCE OVER ELECTRONIC DATABASES.
  4. WORKMANSHIP SHALL BE IN ACCORDANCE WITH QUALCOMM MECHANICAL WORKMANSHIP STANDARD 80-10767-1.
  3. INTERPRET DIMENSIONS AND TOLERANCES PER ASME Y14.5M-1994.
  2. ALL DIMENSIONS SHOWN ON THIS DRAWING ARE IN MILLIMETERS (MM).
  1. INTERPRET DRAWING PER ASME Y14.100.
- NOTES: UNLESS OTHERWISE SPECIFIED.

MODEL INFORMATION		
CAD TOOL: PRO/ENGINEER		
NAME	REVISION	VERSION
15-JA850-PI	A	2
SEE SEPARATE PARTS LIST 15-JA850-PI		

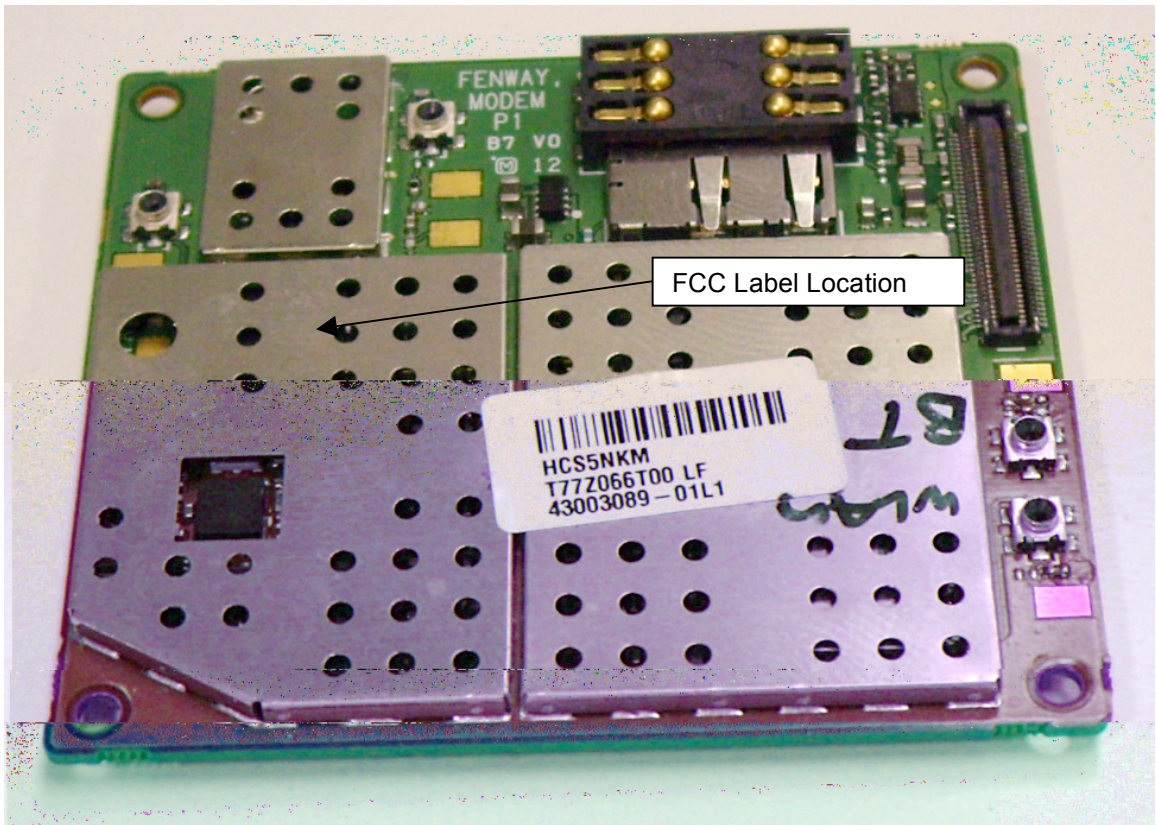
QUALCOMM CONFIDENTIAL AND PROPRIETARY  
 COPYRIGHT (C) 2008 QUALCOMM INCORPORATED.  
 ALL RIGHTS RESERVED.

**METRIC ONLY**

THIRD ANGLE PROJECTION	
UNLESS OTHERWISE SPECIFIED	
DIMENSION UNITS ARE AS NOTED/PER NOTE 2 AND APPLY AFTER SURFACE TREATMENT	
TOLERANCES	
MM	INCHES
X ±2.5	.X ±.1
X.X ±0.76	.XX ±.03
X.XX ±0.25	.XXX ±.010
ANGULAR	
EXCL OF SHEET METAL FLANGES	
±0°30'	
HOLE DIAMETERS	
MM	INCHES
0.34 - 6.35	+0.13 -0.03   .013 - .250
6.37 - 25.40	+0.15 -0.03   .251 - .500
25.41 - 101.60	+0.25 -0.03   .501 - 1.000
	+0.10 - .001

CONTRACT NO.	NONE	DATE	12/19/08
DRW	A. LEJMAN	TITLE	5775 MOREHOUSE DRIVE SAN DIEGO, CA 92121-1714, U.S.A.
CHK RECD	SIG ON FILE	ENG	
P.E.		MFG	
LABEL, FCC ID, FENWAY			
SIZE	CAGE CODE	DRAWING NO.	REV
D	IDN14	15-JA850	A
SCALE	10/1	SHEET	1 OF 1

NAME:ALEJMAN OBJECT:15-JA850 DATE:19-Dec-08 12:59:33



FCC Label Location

HCS5NKM  
T77Z066T00 LF  
43003089-01L1

FENWAY  
MODEM  
P1  
B7 V0  
12

BT  
WLAN