

8

7

6

5

4

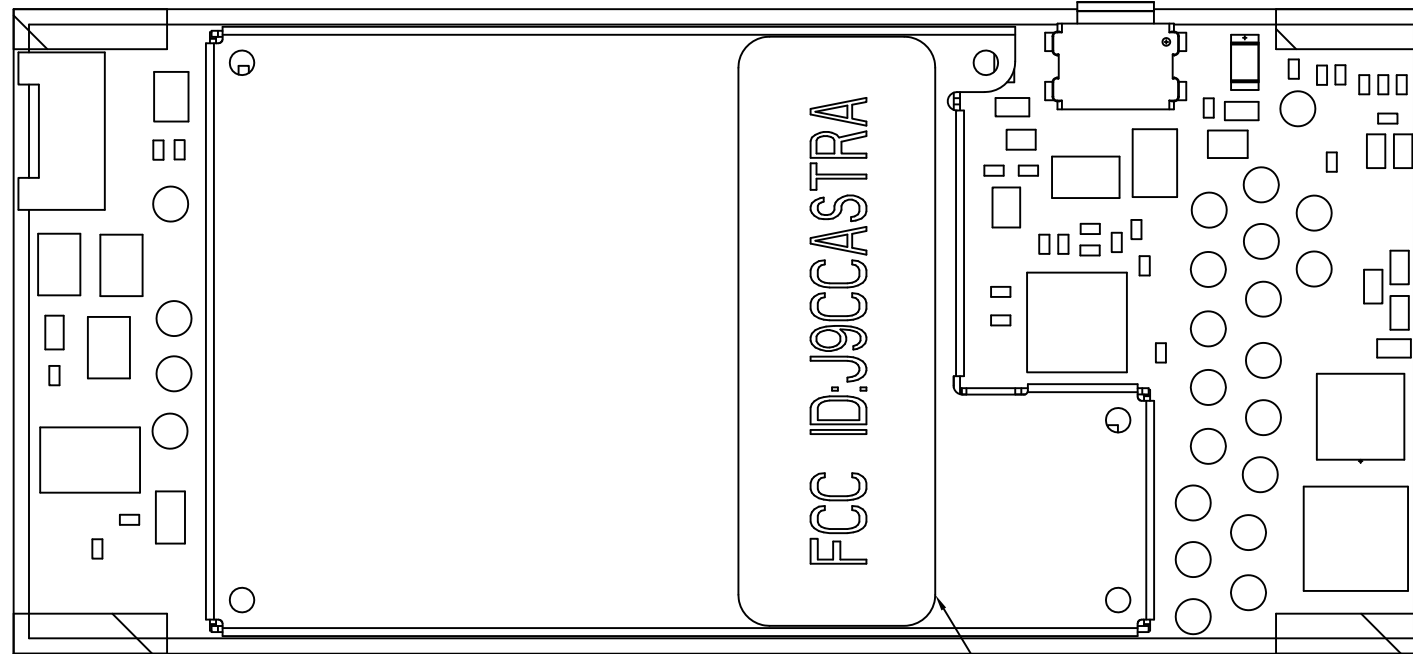
3

DWG NO.	20-A6248	SH	1	REV	F
REVISIONS					
REV	DESCRIPTION	DATE	APPROVED		
F	SEE ECO C147428	06/09	S.Chir		

ALL DATA AND INFORMATION CONTAINED IN OR DISCLOSED BY THIS DRAWING IS CONFIDENTIAL AND PROPRIETARY INFORMATION OF QUALCOMM INCORPORATED/QUALCOMM ISRAEL LTD. AND ALL RIGHTS THEREIN ARE EXPRESSLY RESERVED. BY ACCEPTING THIS MATERIAL THE RECIPIENT AGREES THAT THIS MATERIAL AND THE INFORMATION CONTAINED THEREIN IS TO BE HELD IN CONFIDENCE AND IN TRUST AND WILL NOT BE USED, COPIED, REPRODUCED IN WHOLE OR IN PART, NOR ITS CONTENTS REVEALED IN ANY MANNER TO OTHERS WITHOUT THE EXPRESS WRITTEN PERMISSION OF QUALCOMM INCORPORATED/QUALCOMM ISRAEL LTD.

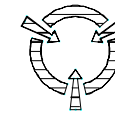
EXPORT OF THIS TECHNOLOGY MAY BE CONTROLLED BY THE U.S. GOVERNMENT. DIVERSION CONTRARY TO U.S. LAW PROHIBITED.

QUALCOMM IS A REGISTERED TRADEMARK AND REGISTERED SERVICE MARK OF QUALCOMM INCORPORATED. OTHER PRODUCT AND BRAND NAMES MAY BE TRADEMARKS OR REGISTERED TRADEMARKS OF THEIR RESPECTIVE OWNERS.



-X  
SIDE B  
P1 SHOWN

3



CAUTION  
SENSITIVE ELECTRONIC DEVICES

EQUIPMENT CONTAINS PARTS AND ASSEMBLIES SENSITIVE TO DAMAGE BY ELECTROSTATIC DISCHARGE (ESD). USE ESD PRECAUTIONARY PROCEDURES PER TR-NWT-000870. QUALCOMM OPERATIONS: USE QUALCOMM ESD PROGRAM 32-34815-1 WHEN TOUCHING, REMOVING, OR INSERTING.

11. BAG AND TAG IN ACCORDANCE WITH QUALCOMM PRODUCT IDENTIFICATION MARKING SPECIFICATION GS80-31042-1, MARKING CODE 101, CONTENT/FORMAT OPTION 1. AND PER QI WORKMANSHIP STANDARD AA80-89153-1.
10. MARK ITEM IN ACCORDANCE WITH QUALCOMM PRODUCT IDENTIFICATION MARKING SPECIFICATION GS80-31042-1, MARKING CODE 502. PROCUREMENT DOCUMENTATION SHALL INDICATE CONTENT/FORMAT OPTION. AFFIX LABEL IN LOCATION AND ORIENTATION SHOWN SUCH THAT THE LABEL JUST COVERS LABEL ALIGNMENT CROP MARKS BUT REMAINS INBOARD FROM THE EDGE OF PART.)
9. MARK ITEM IN ACCORDANCE WITH QUALCOMM PRODUCT IDENTIFICATION MARKING SPECIFICATION GS80-31042-1, MARKING CODE 201 OR 501 OR 505, CONTENT/FORMAT OPTION 1. SERIAL NUMBER MARKING IS REQUIRED. LOCATE AND ORIENT AS SHOWN.
8. ASSEMBLE PER QI ASSEMBLY INSTRUCTIONS AA20-A6248-1 AND PER TR-NWT-000078 AND ANSI/J-STD-001B, CLASS 3, EXCEPT WHERE PRECLUDED BY QUALCOMM DESIGN. SOLVENT EXTRACT CONDUCTIVITY TESTING SHALL BE IN ACCORDANCE WITH TR-NWT-000078.
7. REFER TO BOM 20-A6248 -X FOR ADDITIONAL NOTES.
6. PARTIAL REFERENCE DESIGNATIONS ARE SHOWN FOR REFERENCE ONLY. PARTS MAY OR MAY NOT BE MARKED.

5. FOR SCHEMATIC DIAGRAM, SEE-LD20-A6248
4. WORKMANSHIP SHALL BE IN ACCORDANCE WITH QUALCOMM MECHANICAL WORKMANSHIP STANDARD 80-10767-1.
3. INTERPRET DIMENSIONS AND TOLERANCES PER ASME Y14.5M-1994.
2. MILLIMETERS (MM) ARE THE CONTROLLING DIMENSIONS ON THIS DRAWING. INCH DIMENSIONS ARE FOR REFERENCE ONLY.
1. INTERPRET DRAWING PER MIL-STD-100.

NOTES: UNLESS OTHERWISE SPECIFIED

MODEL INFORMATION		
CAD TOOL: AUTOCAD-2002		
NAME	REVISION	VERSION
20-A6248-1	F	0
SEE SEPARATE PARTS LIST: 20-A6248-X		

QUALCOMM CONFIDENTIAL AND PROPRIETARY  
COPYRIGHT (C) 2009

QUALCOMM INCORPORATED/QUALCOMM ISRAEL LTD  
ALL RIGHTS RESERVED



THIRD ANGLE PROJECTION		
UNLESS OTHERWISE SPECIFIED DIMENSION UNITS ARE AS NOTED/PER NOTE 2 AND APPLY AFTER SURFACE TREATMENT		
TOLERANCES		
MM	LINEAR	ANGULAR
x	2.5	.x .1
x.x	0.75	.xx .03
x.xx	0.25	.xxx .010
EXCL. OF SHEET METAL FLANGES 0.30		
HOLE DIAMETERS		
MM	INCHES	
0.34 - 6.35	+0.13 - 0.03	.013 - .250 +.005 - .001
6.37 - 12.70	+0.15 - 0.03	.251 - .500 +.006 - .001
12.72 - 25.40	+0.25 - 0.03	.501 - 1.000 +.010 - .001

CONTRACT NO.	NONE	DATE	01/09
DRW	SPEED-BOARD	DATE	01/09
CHK	S.Chir	DATE	01/09
ENG	Z.Kahana	DATE	01/09
P.E.	N.Strauss	DATE	01/09
MFG		DATE	01/09
5775 MOREHOUSE DRIVE SAN DIEGO, CA 92121-1714			
TITLE			
CCA, MODULE, CASTRA			
SIZE	CAGE CODE	DRAWING NO	REV
D	1DN14	20-A6248	F
SCALE NONE			SHEET 1 OF 3

Released

Released

8

7

6

5

4

3

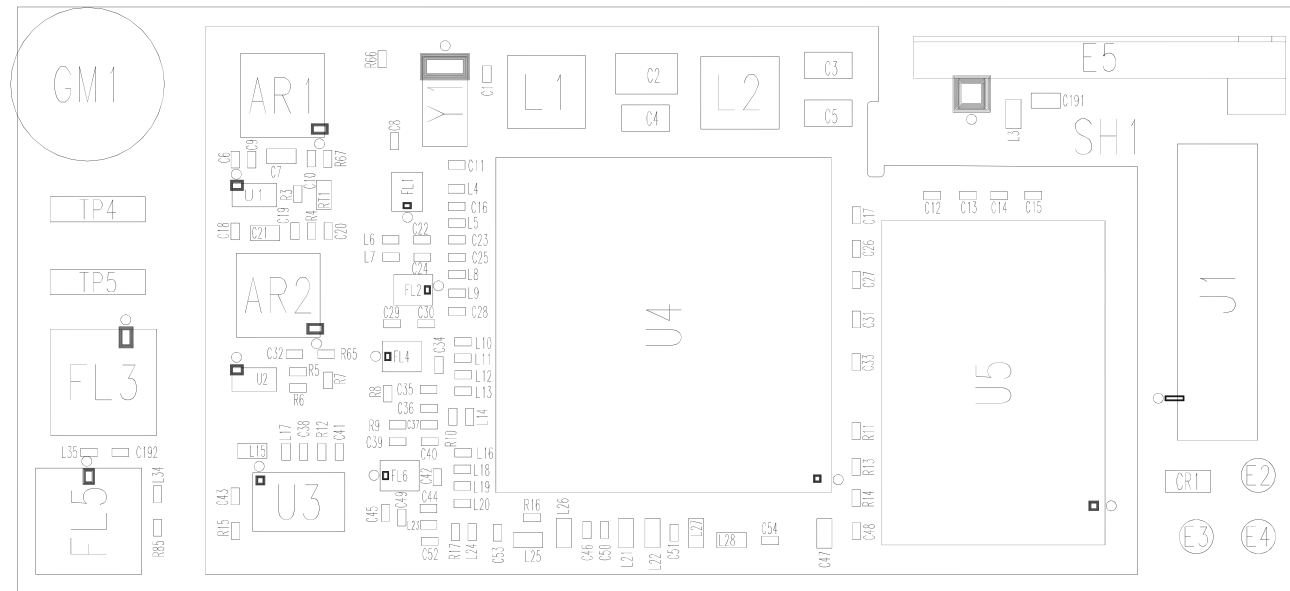
1

DWG. NO.	20-A6248	SH	2	REV	F
REVISIONS					
REV	DESCRIPTION		DATE	APPROVED	
F	SEE SHEET 1		---	---	

NOT TO BE USED, COPIED, REPRODUCED IN WHOLE OR IN PART,  
 NOR ITS CONTENTS REVEALED IN ANY MANNER TO OTHERS WITHOUT  
 THE EXPRESS WRITTEN PERMISSION OF QUALCOMM INCORPORATED/  
 QUALCOMM ISRAEL LTD.

THIS TECHNICAL DATA MAY BE SUBJECT TO U.S. EXPORT, RE-EXPORT,  
 OR TRANSFER ("EXPORT") LAWS. DIVERSION CONTRARY TO U.S. LAW  
 IS PROHIBITED.

QUALCOMM IS A REGISTERED TRADEMARK OF QUALCOMM INCORPORATED  
 IN THE UNITED STATES AND MAY BE REGISTERED IN OTHER COUNTRIES.  
 OTHER PRODUCT AND BRAND NAMES MAY BE TRADEMARKS OR REGISTERED  
 TRADEMARKS OF THEIR RESPECTIVE OWNERS.



- 1 -  
 SIDE A

QUALCOMM CONFIDENTIAL AND PROPRIETARY  
 COPYRIGHT (C) 2009 QUALCOMM INCORPORATED/QUALCOMM ISRAEL LTD.  
 ALL RIGHTS RESERVED.

METRIC ONLY



OMEGA CENTER MATAM POST OFFICE	HAIFA 31905 ISRAEL	SIZE	D	CAGE CODE	1DN14	DRAWING NO	20-A6248	REV	F	VER	0
		SCALE	5,000			SHEET 2 OF 3					

8

7

6

5

4

3

2

1

Released

Released

Released

D

D

C

C

B

B

A

A

8

7

6

5

4

3

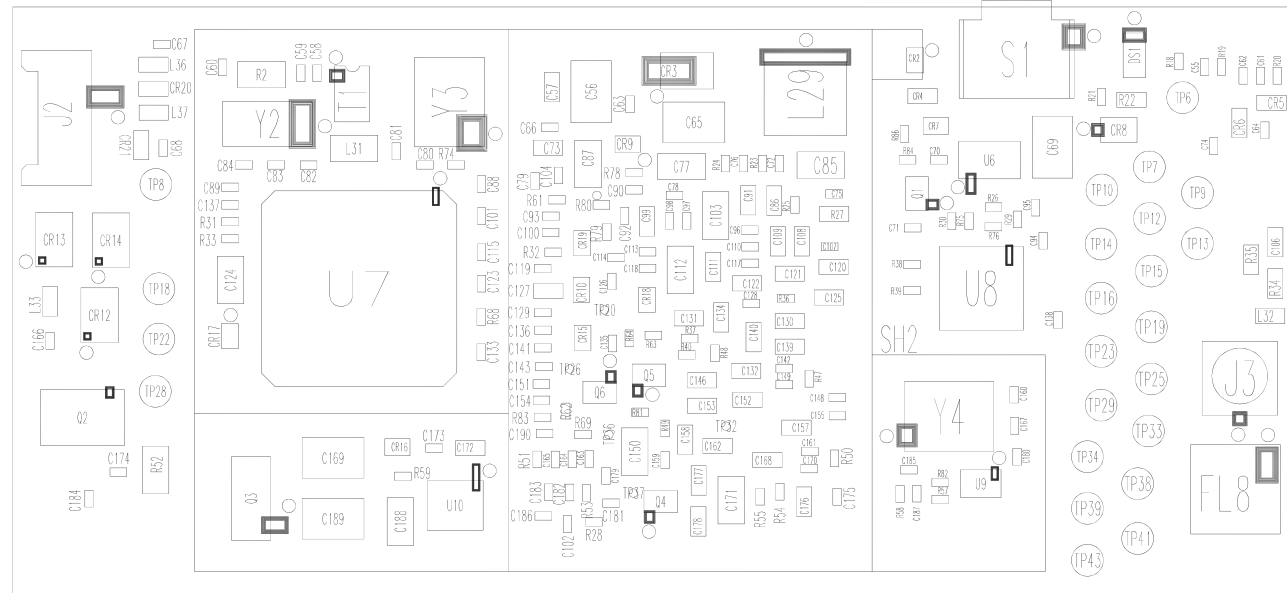
1

DWG NO.	20-A6248	SH	3	REV	F
REVISIONS					
REV	DESCRIPTION		DATE	APPROVED	
F	SEE SHEET 1		---	---	

NOT TO BE USED, COPIED, REPRODUCED IN WHOLE OR IN PART,  
 NOR ITS CONTENTS REVEALED IN ANY MANNER TO OTHERS WITHOUT  
 THE EXPRESS WRITTEN PERMISSION OF QUALCOMM INCORPORATED/  
 QUALCOMM ISRAEL LTD.

THIS TECHNICAL DATA MAY BE SUBJECT TO U.S. EXPORT, RE-EXPORT,  
 OR TRANSFER ("EXPORT") LAWS. DIVERSION CONTRARY TO U.S. LAW  
 IS PROHIBITED.

QUALCOMM IS A REGISTERED TRADEMARK OF QUALCOMM INCORPORATED  
 IN THE UNITED STATES AND MAY BE REGISTERED IN OTHER COUNTRIES.  
 OTHER PRODUCT AND BRAND NAMES MAY BE TRADEMARKS OR REGISTERED  
 TRADEMARKS OF THEIR RESPECTIVE OWNERS.



— 1

S I D E B

QUALCOMM CONFIDENTIAL AND PROPRIETARY

COPYRIGHT (C) 2009 QUALCOMM INCORPORATED/QUALCOMM ISRAEL LTD.  
 ALL RIGHTS RESERVED.

METRIC ONLY



OMEGA CENTER MATAM POST OFFICE	HAIFA 31905 ISRAEL	SIZE	D	CAGE CODE	1DN14	DRAWING NO	20-A6248	REV	F	VER	0
		SCALE	5,000			SHEET 3 OF 3					

Released

Released

D

C

B

A

D

C

B

A

8

7

6

5

4

3

2

1