

Plots of System Verification

Appendix A. Plots of System Verification

The plots for system verification are shown as follows.

Plots of System Verification

Measurement Report

S01 System Check_H2450_230617

Device under Test Properties

Model, Manufacturer	Dimensions [mm]	IMEI	DUT Type
Dipole	10.0 x 10.0 x 300.0		

Exposure Conditions

Phantom Section, TSL	Position, Test Distance [mm]	Band	Group, UID	Frequency [MHz], Channel Number	Conversion Factor	TSL Conductivity [S/m]	TSL Permittivity
Flat,	,			2450.0,	8.26	1.86	41.4

Hardware Setup

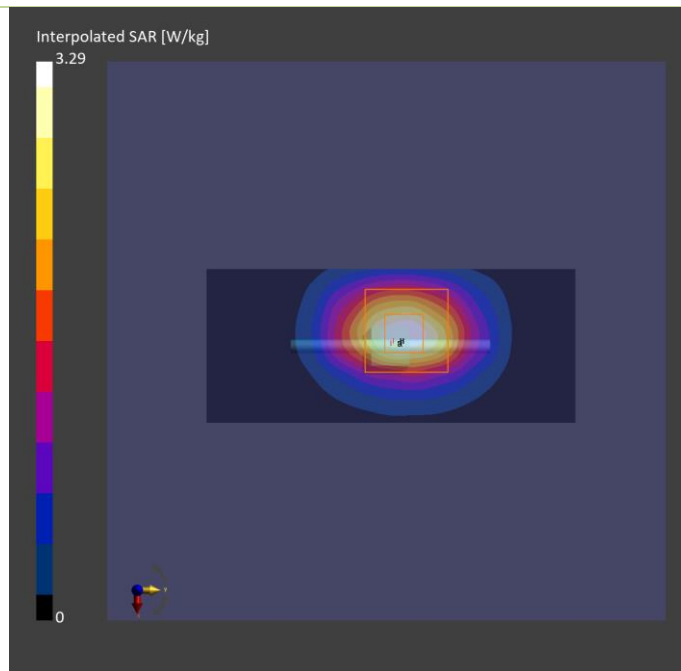
Phantom	TSL, Measured Date	Probe, Calibration Date	DAE, Calibration Date
ELI V5.0 (20deg probe tilt) - 1204	H06T27N4 , 2023-Jun-17	EX3DV4 - SN3971, 2023-01-20	DAE4 Sn1277, 2023-01-24

Scan Setup

	Area Scan	Zoom Scan
Grid Extents [mm]	48.0 x 96.0	30.0 x 30.0 x 30.0
Grid Steps [mm]	12.0 x 12.0	5.0 x 5.0 x 1.5
Sensor Surface [mm]	3.0	1.4

Measurement Results

	Area Scan	Zoom Scan
Date	2023-06-17	2023-06-17
psSAR1g [W/kg]	2.55	2.58
psSAR10g [W/kg]	1.23	1.21
Power Drift [dB]	-0.01	-0.01



Plots of System Verification

Measurement Report

S02 System Check_H5250_230616

Device under Test Properties

Model, Manufacturer	Dimensions [mm]	IMEI	DUT Type
Device,	N/A x N/A x N/A		Dipole

Exposure Conditions

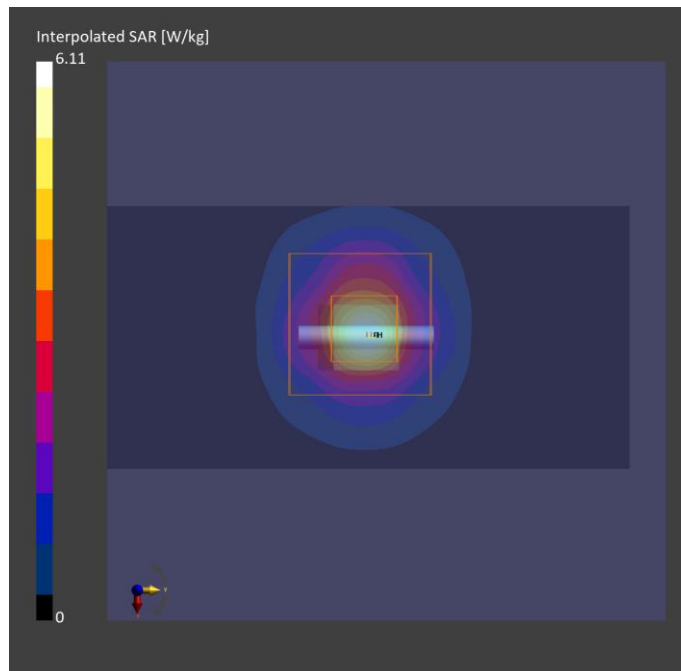
Phantom Section, TSL	Position, Test Distance [mm]	Band	Group, UID	Frequency [MHz], Channel Number	Conversion Factor	TSL Conductivity [S/m]	TSL Permittivity
Flat,	,		CW, -0-	5250.000, 0	5.24	4.57	37.7

Hardware Setup

Phantom	TSL, Measured Date	Probe, Calibration Date	DAE, Calibration Date
ELI V5.0 (20deg probe tilt) - 1204	H06T27N4 , 2023-Jun-16	EX3DV4 - SN3971, 2023-01-20	DAE4 Sn1277, 2023-01-24

Scan Setup

	Area Scan	Zoom Scan	Measurement Results		
			Area Scan	Zoom Scan	
Grid Extents [mm]	40.0 x 80.0	24.0 x 24.0 x 22.0	Date	2023-06-16	2023-06-16
Grid Steps [mm]	10.0 x 10.0	4.0 x 4.0 x 1.4	psSAR1g [W/kg]	3.75	3.88
Sensor Surface [mm]	3.0	1.4	psSAR10g [W/kg]	1.08	1.15
			Power Drift [dB]	0.04	-0.06



Plots of System Verification

Measurement Report

S03 System Check_H5250_230629

Device under Test Properties

Model, Manufacturer	Dimensions [mm]	IMEI	DUT Type
Dipole	10.0 x 10.0 x 300.0		

Exposure Conditions

Phantom Section, TSL	Position, Test Distance [mm]	Band	Group, UID	Frequency [MHz], Channel Number	Conversion Factor	TSL Conductivity [S/m]	TSL Permittivity
Flat,				5250.	5.24	4.5	35.1

Hardware Setup

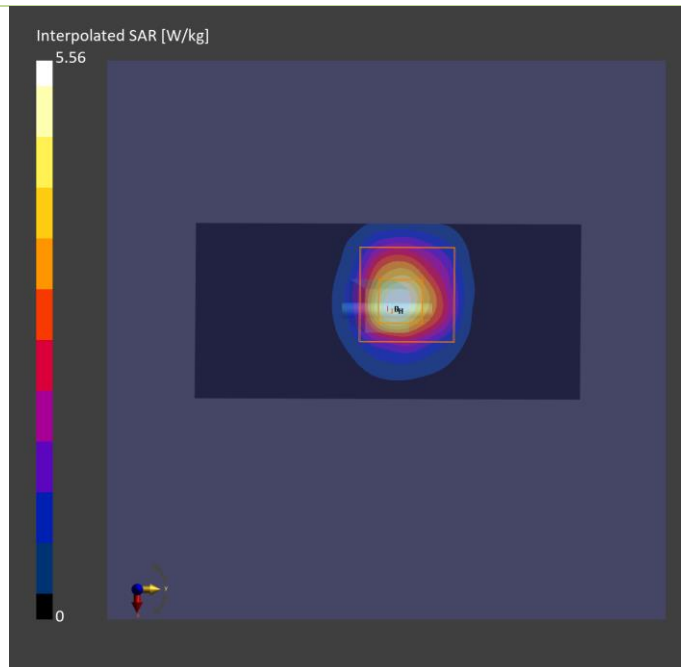
Phantom	TSL, Measured Date	Probe, Calibration Date	DAE, Calibration Date
ELI V5.0 (20deg probe tilt) - 1204	H51T72N4 , 2023-Jun-29	EX3DV4 - SN3971, 2023-01-20	DAE4 Sn1277, 2023-01-24

Scan Setup

	Area Scan	Zoom Scan
Grid Extents [mm]	44.0 x 88.0	22.0 x 22.0 x 22.0
Grid Steps [mm]	11.0 x 11.0	4.0 x 4.0 x 1.4
Sensor Surface [mm]	3.0	1.4

Measurement Results

	Area Scan	Zoom Scan
Date	2023-06-29	2023-06-29
psSAR1g [W/kg]	3.68	4.24
psSAR10g [W/kg]	1.17	1.22
Power Drift [dB]	0.02	0.02



Plots of System Verification

Measurement Report

S04 System Check_H5600_230616

Device under Test Properties

Model, Manufacturer	Dimensions [mm]	IMEI	DUT Type
Device,	N/A x N/A x N/A		Dipole

Exposure Conditions

Phantom Section, TSL	Position, Test Distance [mm]	Band	Group, UID	Frequency [MHz], Channel Number	Conversion Factor	TSL Conductivity [S/m]	TSL Permittivity
Flat,	,		CW, -0-	5600.000, 0	4.95	4.97	37.0

Hardware Setup

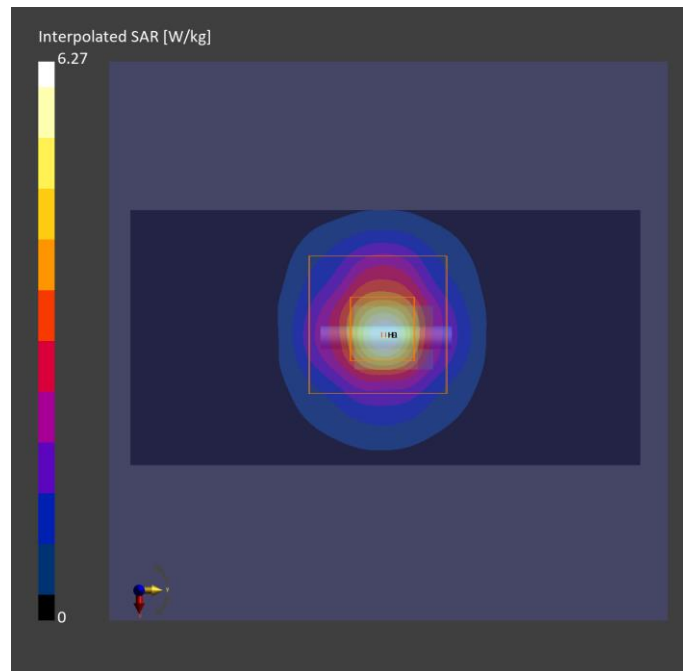
Phantom	TSL, Measured Date	Probe, Calibration Date	DAE, Calibration Date
ELI V5.0 (20deg probe tilt) - 1204	H51T72N4 , 2023-Jun-16	EX3DV4 - SN3971, 2023-01-20	DAE4 Sn1277, 2023-01-24

Scan Setup

	Area Scan	Zoom Scan
Grid Extents [mm]	40.0 x 80.0	24.0 x 24.0 x 22.0
Grid Steps [mm]	10.0 x 10.0	4.0 x 4.0 x 1.4
Sensor Surface [mm]	3.0	1.4

Measurement Results

	Area Scan	Zoom Scan
Date	2023-06-16	2023-06-16
psSAR1g [W/kg]	3.91	4.02
psSAR10g [W/kg]	1.12	1.19
Power Drift [dB]	-0.04	0.07



Plots of System Verification

Measurement Report

S06 System Check_H5800_230616

Device under Test Properties

Model, Manufacturer	Dimensions [mm]	IMEI	DUT Type
Device,	N/A x N/A x N/A		Dipole

Exposure Conditions

Phantom Section, TSL	Position, Test Distance [mm]	Band	Group, UID	Frequency [MHz], Channel Number	Conversion Factor	TSL Conductivity [S/m]	TSL Permittivity
Flat,	,		CW, -0-	5800.000, 0	4.91	5.19	36.7

Hardware Setup

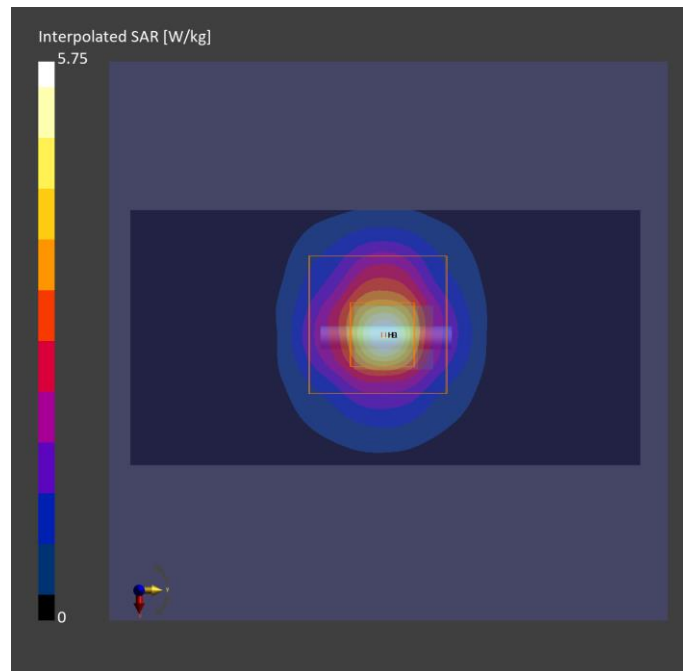
Phantom	TSL, Measured Date	Probe, Calibration Date	DAE, Calibration Date
ELI V5.0 (20deg probe tilt) - 1204	H06T27N4, 2023-Jun-16	EX3DV4 - SN3971, 2023-01-20	DAE4 Sn1277, 2023-01-24

Scan Setup

	Area Scan	Zoom Scan
Grid Extents [mm]	40.0 x 80.0	24.0 x 24.0 x 22.0
Grid Steps [mm]	10.0 x 10.0	4.0 x 4.0 x 1.4
Sensor Surface [mm]	3.0	1.4

Measurement Results

	Area Scan	Zoom Scan
Date	2023-06-16	2023-06-16
psSAR1g [W/kg]	3.62	3.71
psSAR10g [W/kg]	1.04	1.11
Power Drift [dB]	0.07	0.00



Plots of System Verification

Measurement Report

S07 System Check_H5800_230616

Device under Test Properties

Model, Manufacturer	Dimensions [mm]	IMEI	DUT Type
Device,	N/A x N/A x N/A		Dipole

Exposure Conditions

Phantom Section, TSL	Position, Test Distance [mm]	Band	Group, UID	Frequency [MHz], Channel Number	Conversion Factor	TSL Conductivity [S/m]	TSL Permittivity
Flat,	,		CW, -0-	5800.000, 0	4.91	5.19	36.7

Hardware Setup

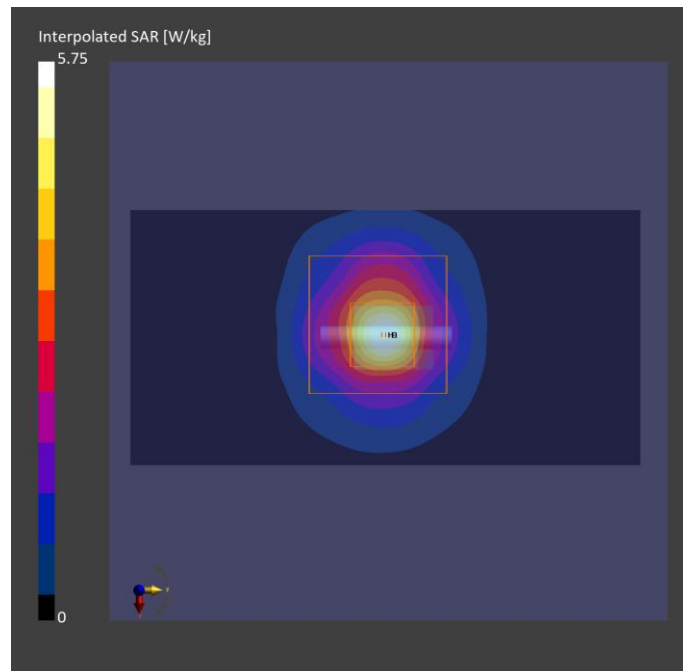
Phantom	TSL, Measured Date	Probe, Calibration Date	DAE, Calibration Date
ELI V5.0 (20deg probe tilt) - 1204	H06T27N4 , 2023-Jun-16	EX3DV4 - SN3971, 2023-01-20	DAE4 Sn1277, 2023-01-24

Scan Setup

	Area Scan	Zoom Scan
Grid Extents [mm]	40.0 x 80.0	24.0 x 24.0 x 22.0
Grid Steps [mm]	10.0 x 10.0	4.0 x 4.0 x 1.4
Sensor Surface [mm]	3.0	1.4

Measurement Results

	Area Scan	Zoom Scan
Date	2023-06-16	2023-06-16
psSAR1g [W/kg]	3.62	3.71
psSAR10g [W/kg]	1.04	1.11
Power Drift [dB]	0.07	0.00



Plots of System Verification

Measurement Report

S08 System Check_H2450_230620

Device under Test Properties

Model, Manufacturer	Dimensions [mm]	IMEI	DUT Type
Device,	N/A x N/A x N/A		Dipole

Exposure Conditions

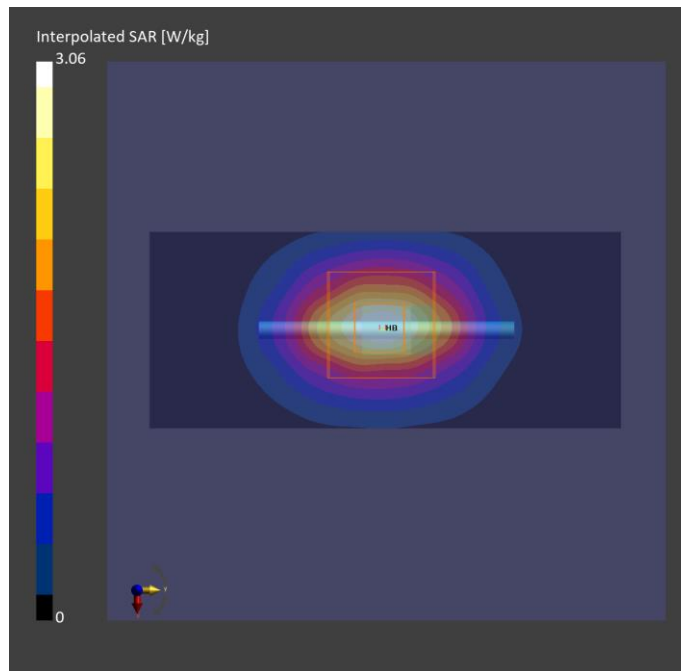
Phantom Section, TSL	Position, Test Distance [mm]	Band	Group, UID	Frequency [MHz], Channel Number	Conversion Factor	TSL Conductivity [S/m]	TSL Permittivity
Flat, HSL	,		CW, -0-	2450.000, 0	8.26	1.75	40.6

Hardware Setup

Phantom	TSL, Measured Date	Probe, Calibration Date	DAE, Calibration Date
ELI V5.0 (20deg probe tilt) - 1204	H06T27N4, 2023-Jun-20	EX3DV4 - SN3971, 2023-01-20	DAE4 Sn1277, 2023-01-24

Scan Setup

	Area Scan	Zoom Scan	Measurement Results		
			Area Scan	Zoom Scan	
Grid Extents [mm]	40.0 x 96.0	30.0 x 30.0 x 30.0	Date	2023-06-20	2023-06-20
Grid Steps [mm]	10.0 x 12.0	5.0 x 5.0 x 1.5	psSAR1g [W/kg]	2.32	2.29
Sensor Surface [mm]	3.0	1.4	psSAR10g [W/kg]	1.08	1.09
			Power Drift [dB]	0.00	0.02



Plots of System Verification

Measurement Report

S12 System Check_H2450_230818

Device under Test Properties

Model, Manufacturer	Dimensions [mm]	IMEI	DUT Type
Dipole	10.0 x 10.0 x 300.0		

Exposure Conditions

Phantom Section, TSL	Position, Test Distance [mm]	Band	Group, UID	Frequency [MHz], Channel Number	Conversion Factor	TSL Conductivity [S/m]	TSL Permittivity
Flat,	,			2450	8.15	1.86	40.7

Hardware Setup

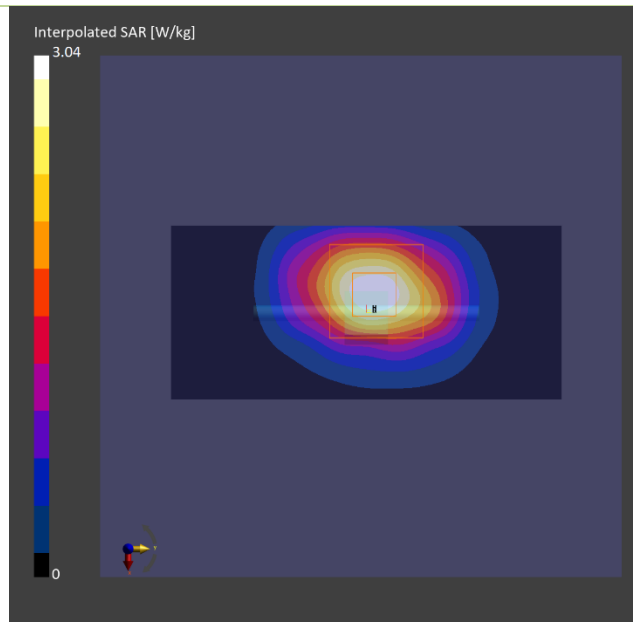
Phantom	TSL, Measured Date	Probe, Calibration Date	DAE, Calibration Date
ELI V5.0 (20deg probe tilt) - 1204	H06T27N4 , 2023-Aug-18	EX3DV4 - SN7696, 2023-01-25	DAE4 Sn1762, 2022-12-08

Scan Setup

	Area Scan	Zoom Scan
Grid Extents [mm]	48.0 x 96.0	30.0 x 30.0 x 30.0
Grid Steps [mm]	12.0 x 12.0	5.0 x 5.0 x 1.5
Sensor Surface [mm]	3.0	1.4

Measurement Results

	Area Scan	Zoom Scan
Date	2023-08-18	2023-08-18
psSAR1g [W/kg]	2.36	2.42
psSAR10g [W/kg]	1.14	1.13
Power Drift [dB]	0.00	-0.01



Plots of System Verification

Measurement Report

S09 System Check_H2450_230620

Device under Test Properties

Model, Manufacturer	Dimensions [mm]	IMEI	DUT Type
Device,	N/A x N/A x N/A		Dipole

Exposure Conditions

Phantom Section, TSL	Position, Test Distance [mm]	Band	Group, UID	Frequency [MHz], Channel Number	Conversion Factor	TSL Conductivity [S/m]	TSL Permittivity
Flat, HSL	,		CW, -0-	2450.000, 0	8.26	1.75	40.6

Hardware Setup

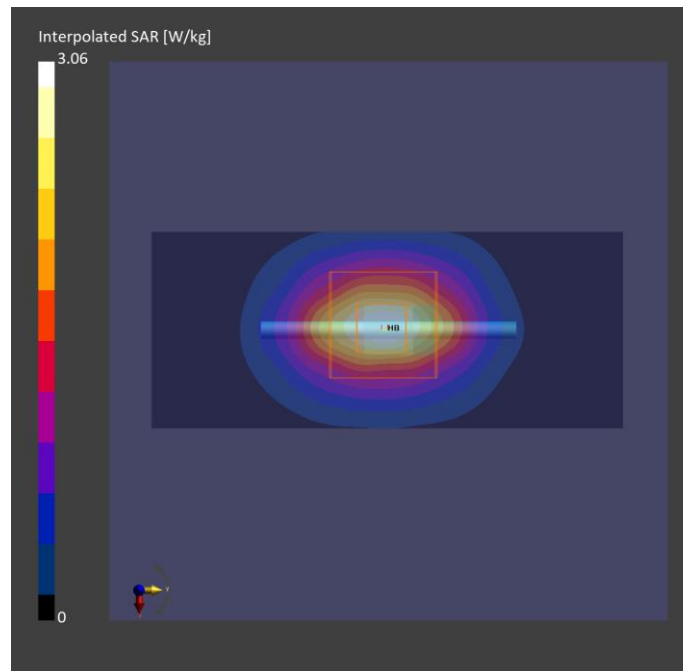
Phantom	TSL, Measured Date	Probe, Calibration Date	DAE, Calibration Date
ELI V5.0 (20deg probe tilt) - 1204	H06T27N4, 2023-Jun-20	EX3DV4 - SN3971, 2023-01-20	DAE4 Sn1277, 2023-01-24

Scan Setup

	Area Scan	Zoom Scan
Grid Extents [mm]	40.0 x 96.0	30.0 x 30.0 x 30.0
Grid Steps [mm]	10.0 x 12.0	5.0 x 5.0 x 1.5
Sensor Surface [mm]	3.0	1.4

Measurement Results

	Area Scan	Zoom Scan
Date	2023-06-20	2023-06-20
psSAR1g [W/kg]	2.32	2.29
psSAR10g [W/kg]	1.08	1.09
Power Drift [dB]	0.00	0.02



Plots of System Verification

Measurement Report

S10 System Check_H6.5GHz_230617

Device under Test Properties

Model, Manufacturer	Dimensions [mm]	IMEI	DUT Type
Dipole	50.0 x 10.0 x 8.0		

Exposure Conditions

Phantom Section, TSL	Position, Test Distance [mm]	Band	Group, UID	Frequency [MHz], Channel Number	Conversion Factor	TSL Conductivity [S/m]	TSL Permittivity
Flat, HSL				6500	5.65	5.95	35.7

Hardware Setup

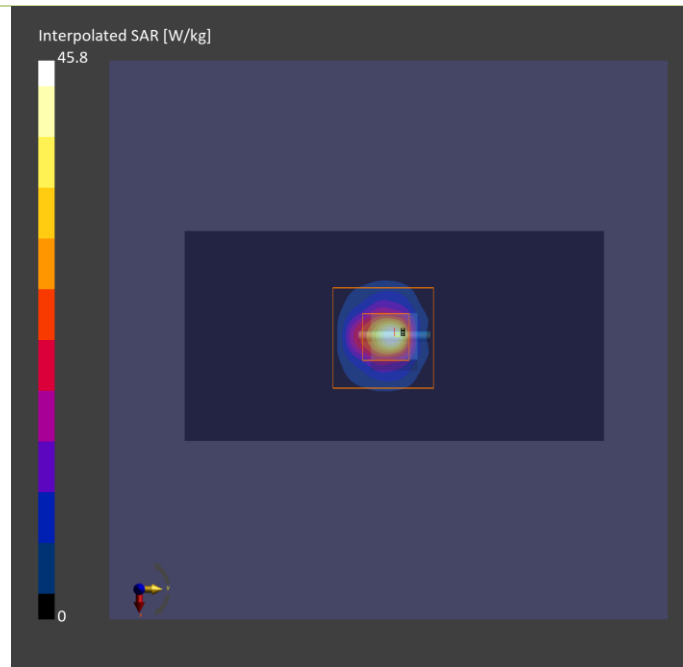
Phantom	TSL, Measured Date	Probe, Calibration Date	DAE, Calibration Date
ELI V5.0 (20deg probe tilt) - 1204	H51T72N4, 2023-Jun-17	EX3DV4 - SN3971, 2023-01-20	DAE4 Sn1277, 2023-01-24

Scan Setup

	Area Scan	Zoom Scan
Grid Extents [mm]	45.0 x 90.0	22.0 x 22.0 x 22.0
Grid Steps [mm]	7.5 x 7.5	3.4 x 3.4 x 1.4
Sensor Surface [mm]	3.0	1.4

Measurement Results

	Area Scan	Zoom Scan
Date	2023-06-17	2023-06-17
psSAR1g [W/kg]	25.0	28.4
psSAR10g [W/kg]	4.93	5.21
psAPD (1.0cm2, sq) [W/m2]		284
psAPD (4.0cm2, sq) [W/m2]		131
Power Drift [dB]	-0.01	-0.02



Plots of System Verification

Measurement Report

S11 System Check_H6.5GHz_230629

Device under Test Properties

Model, Manufacturer	Dimensions [mm]	IMEI	DUT Type
Dipole	50.0 x 10.0 x 8.0		

Exposure Conditions

Phantom Section, TSL	Position, Test Distance [mm]	Band	Group, UID	Frequency [MHz], Channel Number	Conversion Factor	TSL Conductivity [S/m]	TSL Permittivity
Flat, HSL				6500	5.65	5.93	33.1

Hardware Setup

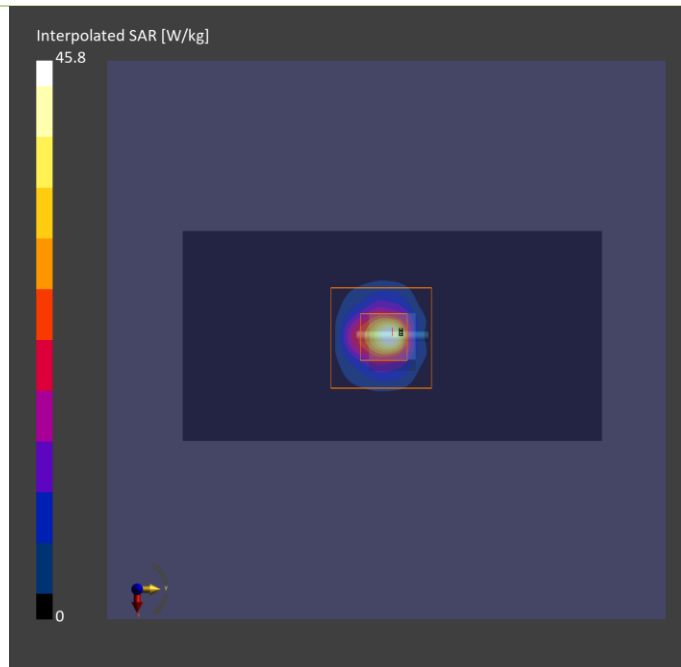
Phantom	TSL, Measured Date	Probe, Calibration Date	DAE, Calibration Date
ELI V5.0 (20deg probe tilt) - 1204	H50T72N4 , 2023-Jun-29	EX3DV4 - SN3971, 2023-01-20	DAE4 Sn1277, 2023-01-24

Scan Setup

	Area Scan	Zoom Scan
Grid Extents [mm]	45.0 x 90.0	22.0 x 22.0 x 22.0
Grid Steps [mm]	7.5 x 7.5	3.4 x 3.4 x 1.4
Sensor Surface [mm]	3.0	1.4

Measurement Results

	Area Scan	Zoom Scan
Date	2023-06-29	2023-06-29
psSAR1g [W/kg]	25.0	28.6
psSAR10g [W/kg]	4.93	5.29
psAPD (1.0cm2, sq) [W/m2]		286
psAPD (4.0cm2, sq) [W/m2]		132
Power Drift [dB]	-0.11	-0.01



Plots of System Verification

Measurement Report

S10 PD_System Check_10 GHz_2023.06.20

Device under Test Properties

Model, Manufacturer	Dimensions [mm]	IMEI	DUT Type
SPEAG, 5G Verification Source 10 GHz	100.0 x 100.0 x 170.0	SN: 1025	10G Verification Kit

Exposure Conditions

Phantom Section	Position, Test Distance [mm]	Band	Group, UID	Frequency [MHz], Channel Number	Conversion Factor
5G Air	FRONT, 10.00	Validation band	CW, -0-	10000.0, 10000	1.0

Hardware Setup

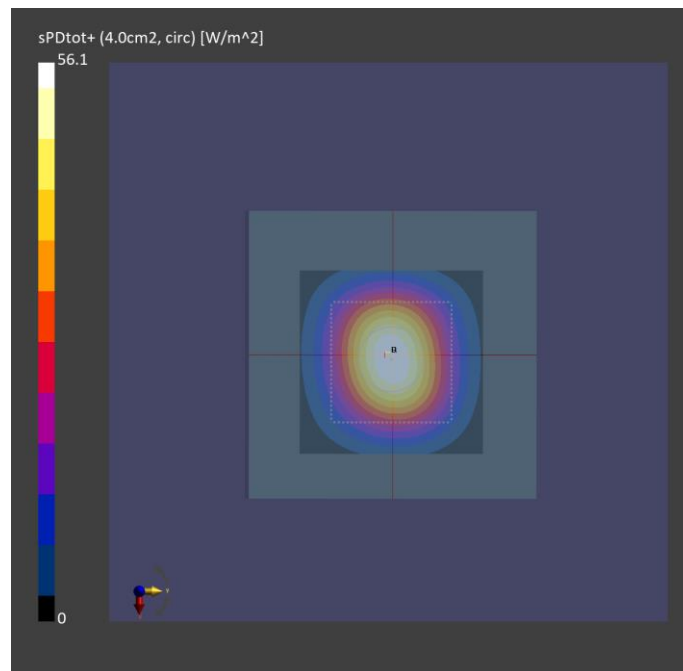
Phantom	Medium	Probe, Calibration Date	DAE, Calibration Date
mmWave- 1030	-Air-	EUmmWV4 - SN9438_F1-55GHz, 2022-07-18	DAE4 Sn1762, 2022-12-08

Scan Setup

	5G Scan
Grid Extents [mm]	60.0 x 60.0
Grid Steps [lambda]	0.125 x 0.125
Sensor Surface [mm]	10.0

Measurement Results

	5G Scan
Date	2022-12-27
Avg. Area [cm ²]	4.00
psPDn+ [W/m ²]	55.9
psPDtot+ [W/m ²]	56.1
psPDmod+ [W/m ²]	56.4
E _{max} [V/m]	151
Power Drift [dB]	-0.01



Plots of System Verification

Measurement Report

S11 PD_System Check_10 GHz_2023.06.30

Device under Test Properties

Model, Manufacturer	Dimensions [mm]	IMEI	DUT Type
SPEAG, 5G Verification Source	100.0 x 100.0 x 170.0	SN: 1025	Verification Source 10 GHz

Exposure Conditions

Phantom Section	Position, Test Distance [mm]	Band	Group, UID	Frequency [MHz], Channel Number	Conversion Factor
5G Air	FRONT, 10.00	Validation band	CW, -0-	10000.0, 10000	1.0

Hardware Setup

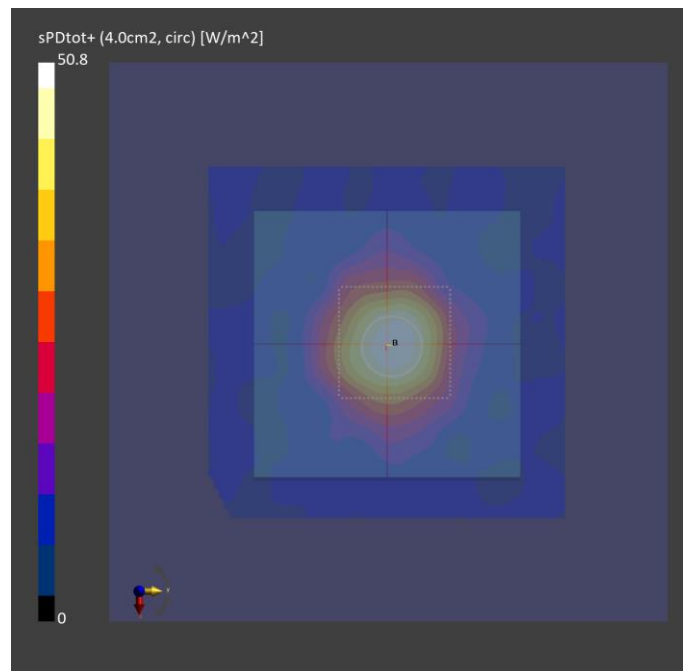
Phantom	Medium	Probe, Calibration Date	DAE, Calibration Date
mmWave- 1030	-Air-	EUmmWV4 - SN9438_F1-55GHz, 2022-07-18	DAE4 Sn1762, 2022-12-08

Scan Setup

	5G Scan
Grid Extents [mm]	60.0 x 60.0
Grid Steps [lambda]	0.125 x 0.125
Sensor Surface [mm]	10.0

Measurement Results

	5G Scan
Date	2023-06-30
Avg. Area [cm ²]	4.00
psPDn+ [W/m ²]	50.5
psPDtot+ [W/m ²]	50.8
psPDmod+ [W/m ²]	51.1
E _{max} [V/m]	144
Power Drift [dB]	-0.02



Appendix B. Plots of Measurement

The SAR plots for highest measured SAR in each exposure configuration, wireless mode and frequency band combination are shown as follows.

Plots of Measurement

Measurement Report

P01 WLAN2.4G_802.11b_Front Face_5mm_Ch1_Ant 0

Device under Test Properties

Model, Manufacturer	Dimensions [mm]	IMEI	DUT Type
Device, BWIN-WTW-P23060131	160.0 x 80.0 x 50.0		Module

Exposure Conditions

Phantom Section, TSL	Position, Test Distance [mm]	Band	Group, UID	Frequency [MHz], Channel Number	Conversion Factor	TSL Conductivity [S/m]	TSL Permittivity
Flat,	Front Face, 5.00	WLAN 2.4GHz	WLAN, 10012-CAB	2412.000, 1	8.26	1.82	41.5

Hardware Setup

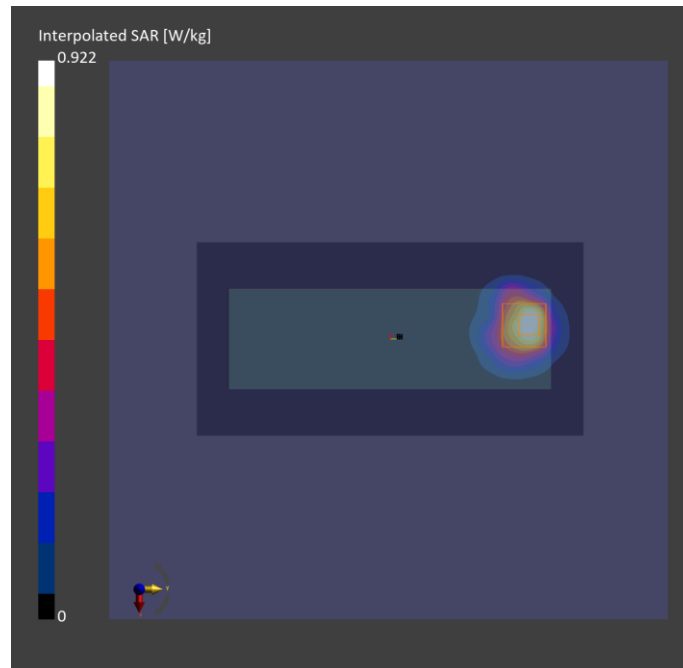
Phantom	TSL, Measured Date	Probe, Calibration Date	DAE, Calibration Date
ELI V5.0 (20deg probe tilt) - 1204	H06T27N4 , 2023-Jun-17	EX3DV4 - SN3971, 2023-01-20	DAE4 Sn1277, 2023-01-24

Scan Setup

	Area Scan	Zoom Scan
Grid Extents [mm]	96.0 x 192.0	30.0 x 30.0 x 30.0
Grid Steps [mm]	12.0 x 12.0	5.0 x 5.0 x 5.0
Sensor Surface [mm]	3.0	1.4

Measurement Results

	Area Scan	Zoom Scan
Date	2023-06-17	2023-06-17
psSAR1g [W/kg]	0.728	0.732
psSAR10g [W/kg]	0.355	0.351
Power Drift [dB]	0.03	0.03
M2/M1 [%]		42.6
Dist 3dB Peak [mm]		8.3



Plots of Measurement

Measurement Report

P02 WLAN5.3G_802.11ac VHT160_Front Face_5mm_Ch50_Ant 0

Device under Test Properties

Model, Manufacturer	Dimensions [mm]	IMEI	DUT Type
Device, BWIN-WTW-P23060131	160.0 x 80.0 x 50.0		Module

Exposure Conditions

Phantom Section, TSL	Position, Test Distance [mm]	Band	Group, UID	Frequency [MHz], Channel Number	Conversion Factor	TSL Conductivity [S/m]	TSL Permittivity
Flat,	Front Face 5.00	WLAN 5GHz	WLAN, 10554-CAE	5250.000, 50	5.24	4.57	37.7

Hardware Setup

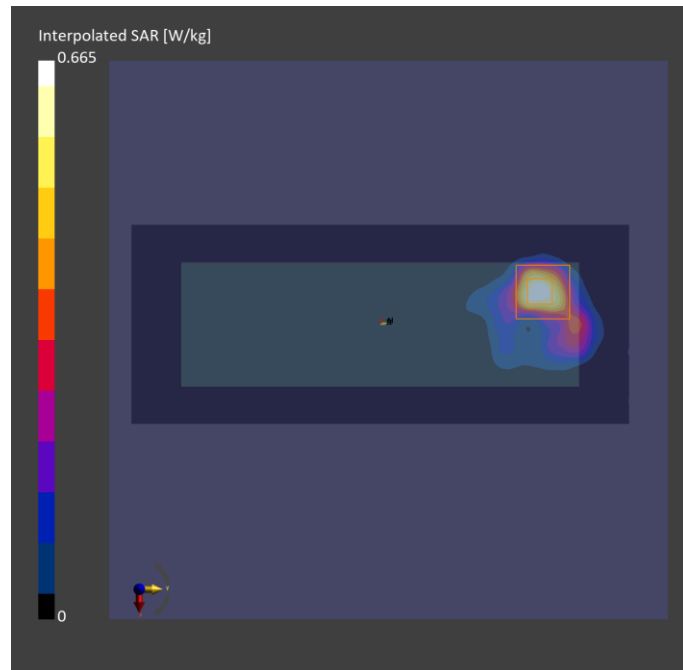
Phantom	TSL, Measured Date	Probe, Calibration Date	DAE, Calibration Date
ELI V5.0 (20deg probe tilt) - 1204	H51T72N4 , 2023-Jun-16	EX3DV4 - SN3971, 2023-01-20	DAE4 Sn1277, 2023-01-24

Scan Setup

	Area Scan	Zoom Scan
Grid Extents [mm]	80.0 x 200.0	24.0 x 24.0 x 22.0
Grid Steps [mm]	10.0 x 10.0	4.0 x 4.0 x 1.4
Sensor Surface [mm]	3.0	1.4

Measurement Results

	Area Scan	Zoom Scan
Date	2023-06-16	2023-06-16
psSAR1g [W/kg]	0.470	0.695
psSAR10g [W/kg]	0.155	0.189
Power Drift [dB]	0.13	0.05
M2/M1 [%]		66.6
Dist 3dB Peak [mm]		5.4



Plots of Measurement

Measurement Report

P03 WLAN5.3G_802.11ac VHT160_Front Face_5mm_Ch50_Ant 0

Device under Test Properties

Model, Manufacturer	Dimensions [mm]	IMEI	DUT Type
BWIN-WTW-P23060131	160.0 x 80.0 x 50.0		Tablet

Exposure Conditions

Phantom Section, TSL	Position, Test Distance [mm]	Band	Group, UID	Frequency [MHz], Channel Number	Conversion Factor	TSL Conductivity [S/m]	TSL Permittivity
Flat,	Front Face, 5.00	U-NII-1, U-NII-2A	WLAN, 10554-AAE	5250.000, 50	5.24	4.50	35.1

Hardware Setup

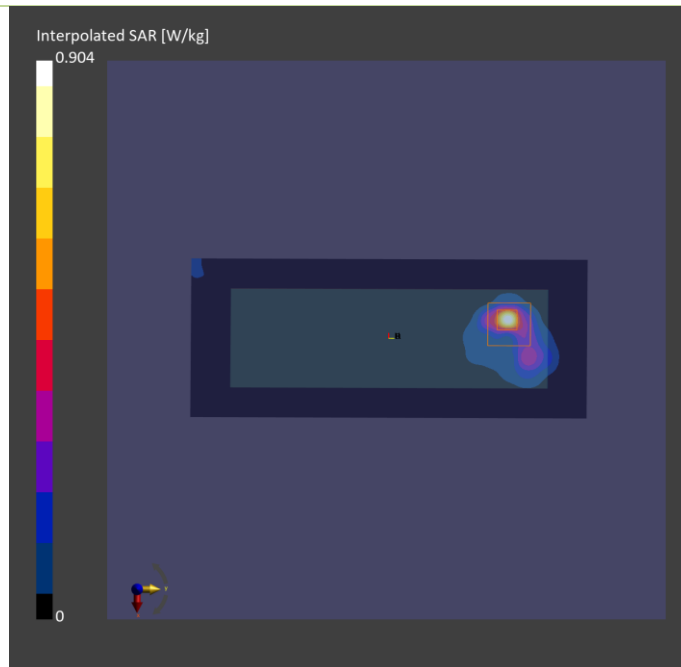
Phantom	TSL, Measured Date	Probe, Calibration Date	DAE, Calibration Date
ELI V5.0 (20deg probe tilt) - 1204	H51T72N4 , 2023-Jun-29	EX3DV4 - SN3971, 2023-01-20	DAE4 Sn1277, 2023-01-24

Scan Setup

	Area Scan	Zoom Scan
Grid Extents [mm]	80.0 x 200.0	24.0 x 24.0 x 22.0
Grid Steps [mm]	10.0 x 10.0	4.0 x 4.0 x 1.4
Sensor Surface [mm]	3.0	1.4

Measurement Results

	Area Scan	Zoom Scan
Date	2023-06-29	2023-06-29
psSAR1g [W/kg]	0.496	0.519
psSAR10g [W/kg]	0.133	0.137
Power Drift [dB]	-0.02	0.04
M2/M1 [%]		64.3
Dist 3dB Peak [mm]		4.7



Plots of Measurement

Measurement Report

P04 WLAN5.6G_802.11ac VHT160_Front Face_5mm_Ch114_Ant 0

Device under Test Properties

Model, Manufacturer	Dimensions [mm]	IMEI	DUT Type
Device, BWIN-WTW-P23060131	160.0 x 80.0 x 50.0		Module

Exposure Conditions

Phantom Section, TSL	Position, Test Distance [mm]	Band	Group, UID	Frequency [MHz], Channel Number	Conversion Factor	TSL Conductivity [S/m]	TSL Permittivity
Flat,	Front Face 5.00	WLAN 5GHz	WLAN, 10554-CAE	5570.0, 114	4.95	4.92	37.1

Hardware Setup

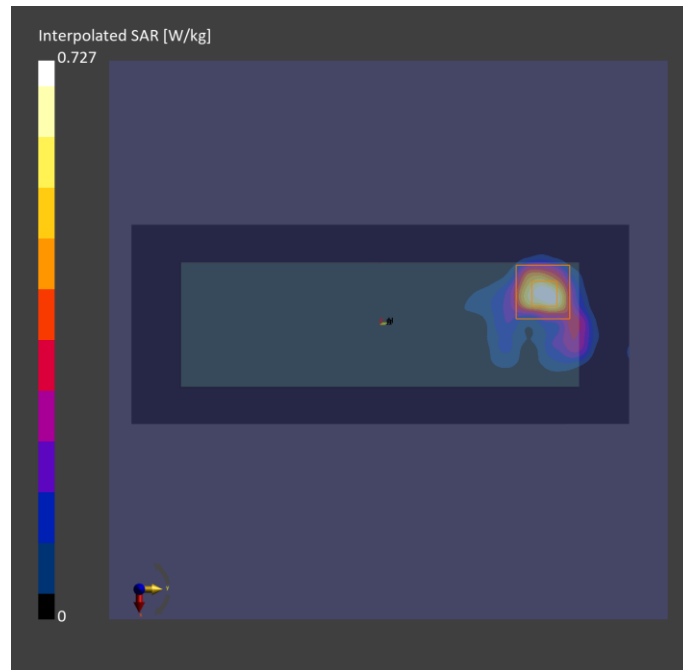
Phantom	TSL, Measured Date	Probe, Calibration Date	DAE, Calibration Date
ELI V5.0 (20deg probe tilt) - 1204	H51T72N4 , 2023-Jun-16	EX3DV4 - SN3971, 2023-01-20	DAE4 Sn1277, 2023-01-24

Scan Setup

	Area Scan	Zoom Scan
Grid Extents [mm]	80.0 x 200.0	24.0 x 24.0 x 22.0
Grid Steps [mm]	10.0 x 10.0	4.0 x 4.0 x 1.4
Sensor Surface [mm]	3.0	1.4

Measurement Results

	Area Scan	Zoom Scan
Date	2023-06-16	2023-06-16
psSAR1g [W/kg]	0.525	0.729
psSAR10g [W/kg]	0.167	0.181
Power Drift [dB]	0.30	0.06
M2/M1 [%]		64.3
Dist 3dB Peak [mm]		5.6



Plots of Measurement

Measurement Report

P06 WLAN5.8G_802.11ac VHT80_Front Face_5mm_Ch155_Ant 0

Device under Test Properties

Model, Manufacturer	Dimensions [mm]	IMEI	DUT Type
Device, BWIN-WTW-P23060131	160.0 x 80.0 x 50.0		Module

Exposure Conditions

Phantom Section, TSL	Position, Test Distance [mm]	Band	Group, UID	Frequency [MHz], Channel Number	Conversion Factor	TSL Conductivity [S/m]	TSL Permittivity
Flat,	Front Face 5.00	WLAN 5GHz	WLAN, 10544-CAE	5775.000, 155	4.91	5.17	36.8

Hardware Setup

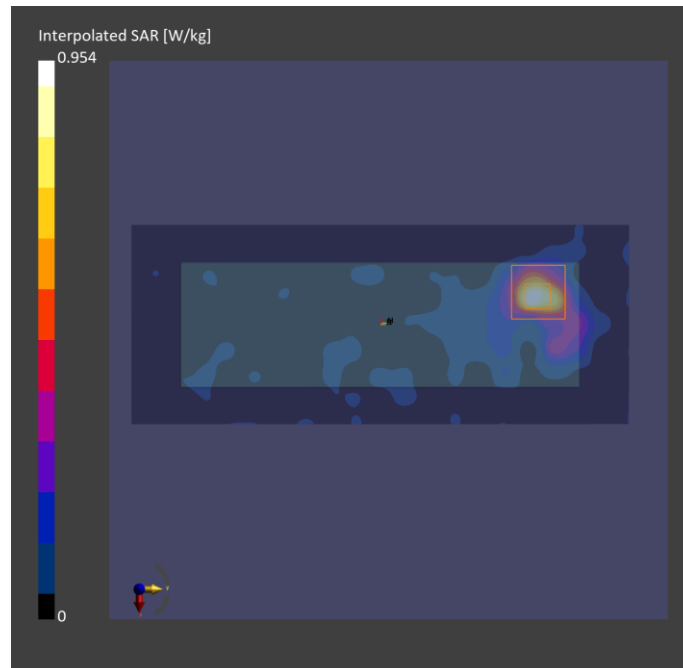
Phantom	TSL, Measured Date	Probe, Calibration Date	DAE, Calibration Date
ELI V5.0 (20deg probe tilt) - 1204	H06T27N4 , 2023-Jun-16	EX3DV4 - SN3971, 2023-01-20	DAE4 Sn1277, 2023-01-24

Scan Setup

	Area Scan	Zoom Scan
Grid Extents [mm]	80.0 x 200.0	24.0 x 24.0 x 22.0
Grid Steps [mm]	10.0 x 10.0	4.0 x 4.0 x 1.4
Sensor Surface [mm]	3.0	1.4

Measurement Results

	Area Scan	Zoom Scan
Date	2023-06-16	2023-06-16
psSAR1g [W/kg]	0.646	0.768
psSAR10g [W/kg]	0.203	0.221
Power Drift [dB]	-0.02	-0.04
M2/M1 [%]		62.8
Dist 3dB Peak [mm]		5.6



Plots of Measurement

Measurement Report

P07 WLAN5.9G_802.11ac VHT160_Front Face_5mm_Ch163_Ant 0

Device under Test Properties

Model, Manufacturer	Dimensions [mm]	IMEI	DUT Type
Device, BWIN-WTW-P23060131	160.0 x 80.0 x 50.0		Module

Exposure Conditions

Phantom Section, TSL	Position, Test Distance [mm]	Band	Group, UID	Frequency [MHz], Channel Number	Conversion Factor	TSL Conductivity [S/m]	TSL Permittivity
Flat,	Front Face 5.00	WLAN 5GHz	WLAN, 10554-AAD	5815.000, 163	4.91	5.20	36.7

Hardware Setup

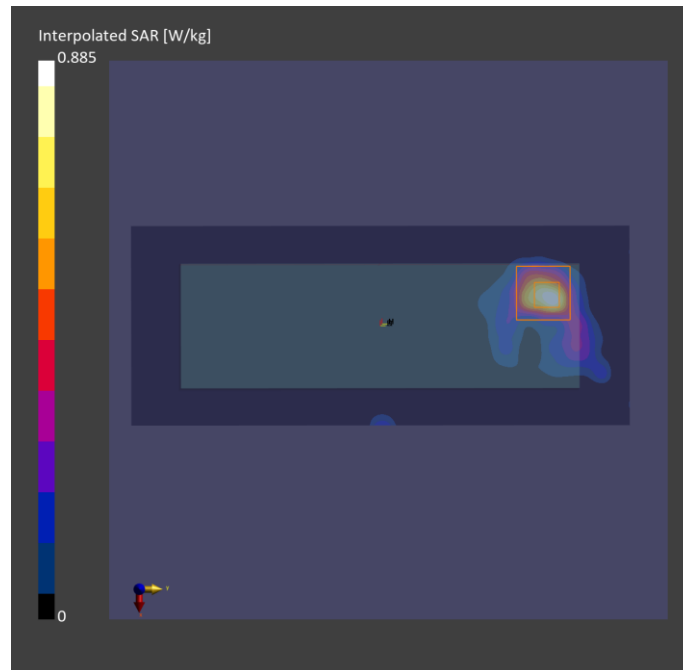
Phantom	TSL, Measured Date	Probe, Calibration Date	DAE, Calibration Date
ELI V5.0 (20deg probe tilt) - 1204	H51T72N4 , 2023-Jun-16	EX3DV4 - SN3971, 2023-01-20	DAE4 Sn1277, 2023-01-24

Scan Setup

	Area Scan	Zoom Scan
Grid Extents [mm]	80.0 x 200.0	24.0 x 24.0 x 22.0
Grid Steps [mm]	10.0 x 10.0	4.0 x 4.0 x 1.4
Sensor Surface [mm]	3.0	1.4

Measurement Results

	Area Scan	Zoom Scan
Date	2023-06-16	2023-06-16
psSAR1g [W/kg]	0.604	0.770
psSAR10g [W/kg]	0.185	0.212
Power Drift [dB]	0.03	0.01
M2/M1 [%]		61.9
Dist 3dB Peak [mm]		5.6



Plots of Measurement

Measurement Report

P08 BT_BLE_Front Face_5mm_Ch19_Ant 1

Device under Test Properties

Model, Manufacturer	Dimensions [mm]	IMEI	DUT Type
Device, BWIN-WTW-P23060131	160.0 x 80.0 x 50.0		Module

Exposure Conditions

Phantom Section, TSL	Position, Test Distance [mm]	Band	Group, UID	Frequency [MHz], Channel Number	Conversion Factor	TSL Conductivity [S/m]	TSL Permittivity
Flat,	Front Face 5.00	ISM 2.4 GHz Band	Bluetooth, 10670-AAA	2440.000, 38	8.26	1.75	40.6

Hardware Setup

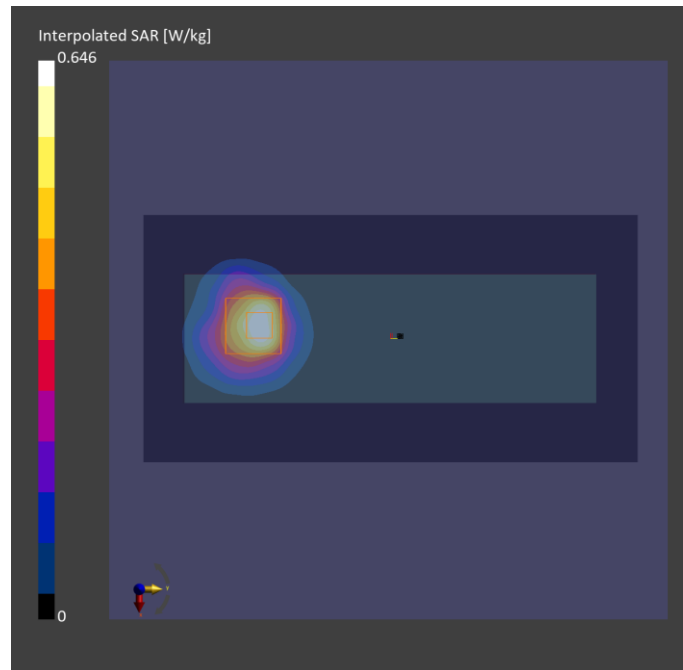
Phantom	TSL, Measured Date	Probe, Calibration Date	DAE, Calibration Date
ELI V5.0 (20deg probe tilt) - 1204	H06T27N4 , 2023-Jun-20	EX3DV4 - SN3971, 2023-01-20	DAE4 Sn1277, 2023-01-24

Scan Setup

	Area Scan	Zoom Scan
Grid Extents [mm]	96.0 x 192.0	30.0 x 30.0 x 30.0
Grid Steps [mm]	12.0 x 12.0	5.0 x 5.0 x 5.0
Sensor Surface [mm]	3.0	1.4

Measurement Results

	Area Scan	Zoom Scan
Date	2023-06-20	2023-06-20
psSAR1g [W/kg]	0.517	0.497
psSAR10g [W/kg]	0.254	0.214
Power Drift [dB]	0.04	0.05
M2/M1 [%]		43.0
Dist 3dB Peak [mm]		8.3



Plots of Measurement

Measurement Report

P12 BT_BLE_Front Face_5mm_Ch19_Ant 0

Device under Test Properties

Model, Manufacturer	Dimensions [mm]	IMEI	DUT Type
BWIN-WTW-P23060131	160.0 x 80.0 x 50.0		Module

Exposure Conditions

Phantom Section, TSL	Position, Test Distance [mm]	Band	Group, UID	Frequency [MHz], Channel Number	Conversion Factor	TSL Conductivity [S/m]	TSL Permittivity
Flat,	Front Face, 5.00	ISM 2.4 GHz Band	Bluetooth, 10670-AAA	2440, 19	8.15	1.85	40.7

Hardware Setup

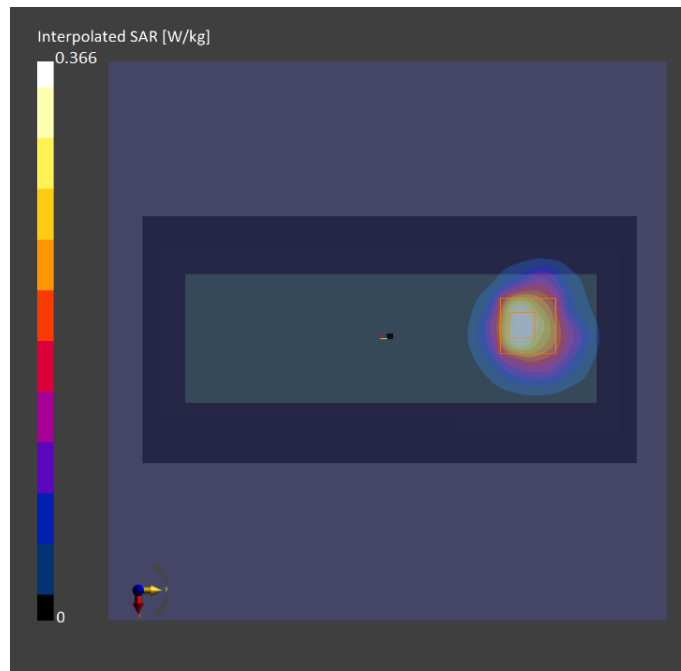
Phantom	TSL, Measured Date	Probe, Calibration Date	DAE, Calibration Date
ELI V5.0 (20deg probe tilt) - 1204	H06T27N4 , 2023-Aug-18	EX3DV4 - SN7696, 2023-01-25	DAE4 Sn1762, 2022-12-08

Scan Setup

	Area Scan	Zoom Scan
Grid Extents [mm]	96.0 x 192.0	30.0 x 30.0 x 30.0
Grid Steps [mm]	12.0 x 12.0	5.0 x 5.0 x 5.0
Sensor Surface [mm]	3.0	1.4

Measurement Results

	Area Scan	Zoom Scan
Date	2023-08-18	2023-08-18
psSAR1g [W/kg]	0.189	0.161
psSAR10g [W/kg]	0.071	0.087
Power Drift [dB]	0.05	0.03
M2/M1 [%]		44.8
Dist 3dB Peak [mm]		12.3



Plots of Measurement

Measurement Report

P09 BT_BLE_Front Face_5mm_Ch19_Ant 0+1

Device under Test Properties

Model, Manufacturer	Dimensions [mm]	IMEI	DUT Type
Device, BWIN-WTW-P23060131	160.0 x 80.0 x 50.0		Tablet

Exposure Conditions

Phantom Section, TSL	Position, Test Distance [mm]	Band	Group, UID	Frequency [MHz], Channel Number	Conversion Factor	TSL Conductivity [S/m]	TSL Permittivity
Flat,	Front Face, 5.00	ISM 2.4 GHz Band	Bluetooth, 10670-AAA	2440.000, 38	8.26	1.75	40.6

Hardware Setup

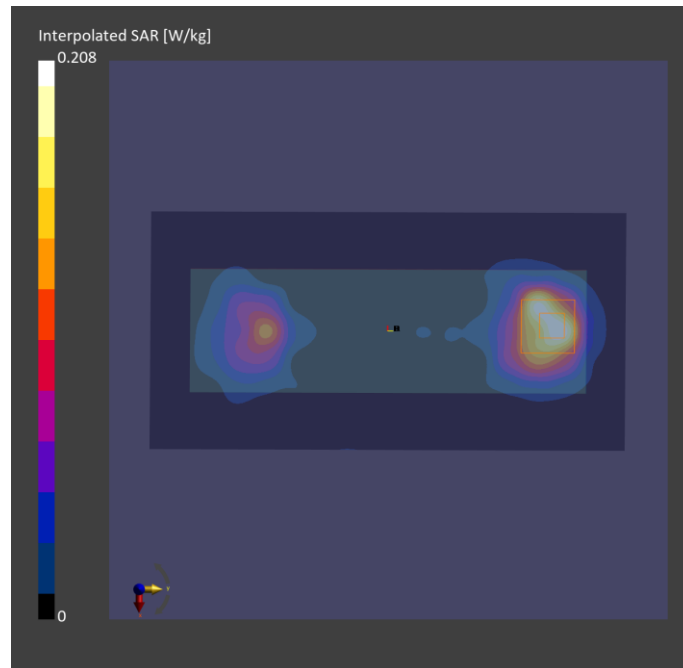
Phantom	TSL, Measured Date	Probe, Calibration Date	DAE, Calibration Date
ELI V5.0 (20deg probe tilt) - 1204	H06T27N4 , 2023-Jun-20	EX3DV4 - SN3971, 2023-01-20	DAE4 Sn1277, 2023-01-24

Scan Setup

	Area Scan	Zoom Scan
Grid Extents [mm]	96.0 x 192.0	30.0 x 30.0 x 30.0
Grid Steps [mm]	12.0 x 12.0	5.0 x 5.0 x 5.0
Sensor Surface [mm]	3.0	1.4

Measurement Results

	Area Scan	Zoom Scan
Date	2023-06-20	2023-06-20
psSAR1g [W/kg]	0.163	0.171
psSAR10g [W/kg]	0.084	0.087
Power Drift [dB]	0.18	0.03
M2/M1 [%]		41.0
Dist 3dB Peak [mm]		7.7



Plots of Measurement

Measurement Report

P10 WLAN6G_802.11be EHT320_Front Face_5mm_Ch31_Ant 0

Device under Test Properties

Model, Manufacturer	Dimensions [mm]	IMEI	DUT Type
BWIN-WTW-P23060131	160.0 x 80.0 x 50.0		Tablet

Exposure Conditions

Phantom Section, TSL	Position, Test Distance [mm]	Band	Group, UID	Frequency [MHz], Channel Number	Conversion Factor	TSL Conductivity [S/m]	TSL Permittivity
Flat,	Front Face, 5.00	U-NII-5	WLAN, 10554-AAE	6105.000, 31	5.65	5.47	36.3

Hardware Setup

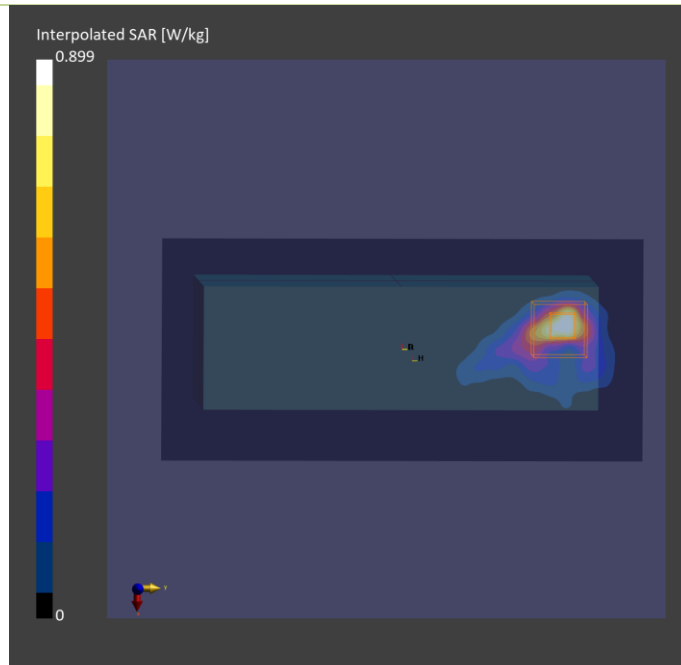
Phantom	TSL, Measured Date	Probe, Calibration Date	DAE, Calibration Date
ELI V5.0 (20deg probe tilt) - 1204	H51T72N4 , 2023-Jun-17	EX3DV4 - SN3971, 2023-01-20	DAE4 Sn1277, 2023-01-24

Scan Setup

	Area Scan	Zoom Scan
Grid Extents [mm]	90.0 x 195.0	22.0 x 22.0 x 22.0
Grid Steps [mm]	7.5 x 7.5	3.4 x 3.4 x 1.4
Sensor Surface [mm]	3.0	1.4

Measurement Results

	Area Scan	Zoom Scan
Date	2023-06-17	2023-06-17
psSAR1g [W/kg]	0.646	0.737
psSAR10g [W/kg]	0.192	0.212
psAPD (1.0cm2, sq) [W/m2]		7.04
psAPD (4.0cm2, sq) [W/m2]		4.84
Power Drift [dB]	0.01	0.09
M2/M1 [%]		55.2
Dist 3dB Peak [mm]		5.4



Plots of Measurement

Measurement Report

P11 WLAN6G_802.11be EHT320_Front Face_5mm_Ch31_Ant 0

Device under Test Properties

Model, Manufacturer	Dimensions [mm]	IMEI	DUT Type
BWIN-WTW-P23060131	160.0 x 80.0 x 50.0		Tablet

Exposure Conditions

Phantom Section, TSL	Position, Test Distance [mm]	Band	Group, UID	Frequency [MHz], Channel Number	Conversion Factor	TSL Conductivity [S/m]	TSL Permittivity
Flat,	Front Face, 5.00	U-NII-5	WLAN, 10554-AAE	6105.000, 31	5.65	5.47	33.7

Hardware Setup

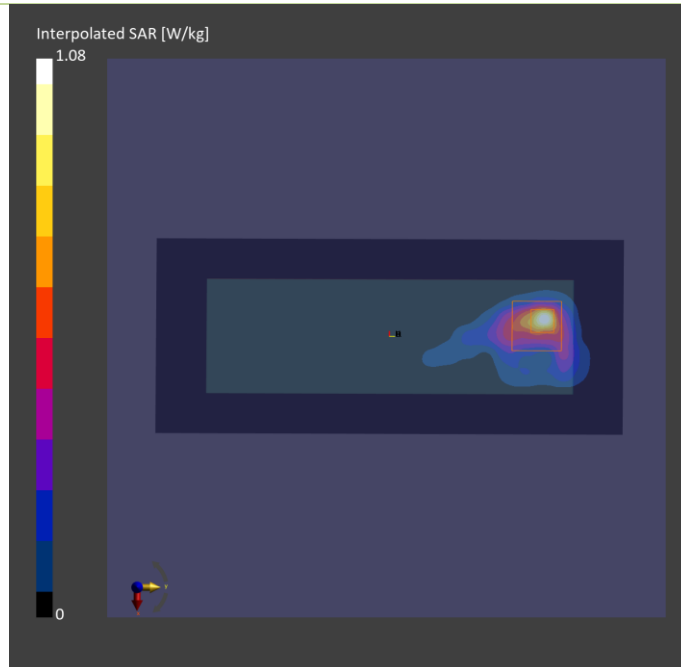
Phantom	TSL, Measured Date	Probe, Calibration Date	DAE, Calibration Date
ELI V5.0 (20deg probe tilt) - 1204	H51T72N4 , 2023-Jun-29	EX3DV4 - SN3971, 2023-01-20	DAE4 Sn1277, 2023-01-24

Scan Setup

	Area Scan	Zoom Scan
Grid Extents [mm]	90.0 x 195.0	22.0 x 22.0 x 22.0
Grid Steps [mm]	7.5 x 7.5	3.4 x 3.4 x 1.4
Sensor Surface [mm]	3.0	1.4

Measurement Results

	Area Scan	Zoom Scan
Date	2023-06-29	2023-06-29
psSAR1g [W/kg]	0.651	0.662
psSAR10g [W/kg]	0.175	0.191
psAPD (1.0cm2, sq) [W/m2]		7.32
psAPD (4.0cm2, sq) [W/m2]		4.74
Power Drift [dB]	-0.02	-0.08
M2/M1 [%]		53.4
Dist 3dB Peak [mm]		5.5



Plots of Measurement

Measurement Report

P10 WLAN6G_802.11be EHT320_Front Face_5mm_Ch31_Ant 0

Device under Test Properties

Model, Manufacturer	Dimensions [mm]	IMEI	DUT Type
, BWIN-WTW-P23060131	160.0 x 80.0 x 50.0		Module

Exposure Conditions

Phantom Section	Position, Test Distance [mm]	Band	Group, UID	Frequency [MHz], Channel Number	Conversion Factor
5G Air	Front Face 5.00	U-NII-5	WLAN, 10554-AAE	6105.0, 31	1.0

Hardware Setup

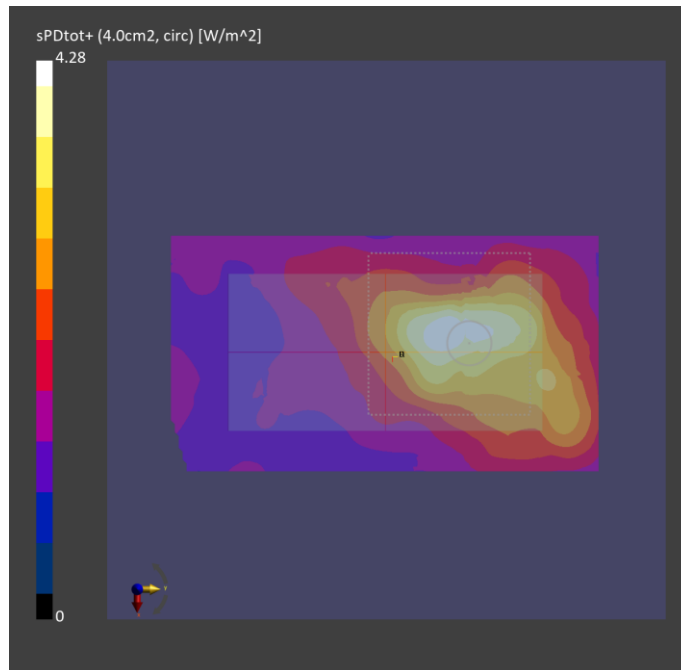
Phantom	Medium	Probe, Calibration Date	DAE, Calibration Date
mmWave- 1030	-Air-	EUmmWV4 - SN9438_F1-55GHz, 2022-07-18	DAE4 Sn1762, 2022-12-08

Scan Setup

	5G Scan
Grid Extents [mm]	98.0 x 98.0
Grid Steps [lambda]	0.125 x 0.125
Sensor Surface [mm]	5.0

Measurement Results

	5G Scan
Date	2023-06-20
Avg. Area [cm ²]	4.00
psPDn+ [W/m ²]	2.23
psPDtot+ [W/m ²]	3.21
psPDmod+ [W/m ²]	5.51
E _{max} [V/m]	57.7
Power Drift [dB]	-0.08



Plots of Measurement

Measurement Report

P11 WLAN6G_802.11be EHT320_Front Face_5mm_Ch31_Ant 0

Device under Test Properties

Model, Manufacturer	Dimensions [mm]	IMEI	DUT Type
BWIN-WTW-P23060131	160.0 x 80.0 x 50.0		Phone

Exposure Conditions

Phantom Section	Position, Test Distance [mm]	Band	Group, UID	Frequency [MHz], Channel Number	Conversion Factor
5G Air	Front Face, 5.00	U-NII-5	WLAN, 10554-AAE	6105.0, 31	1.0

Hardware Setup

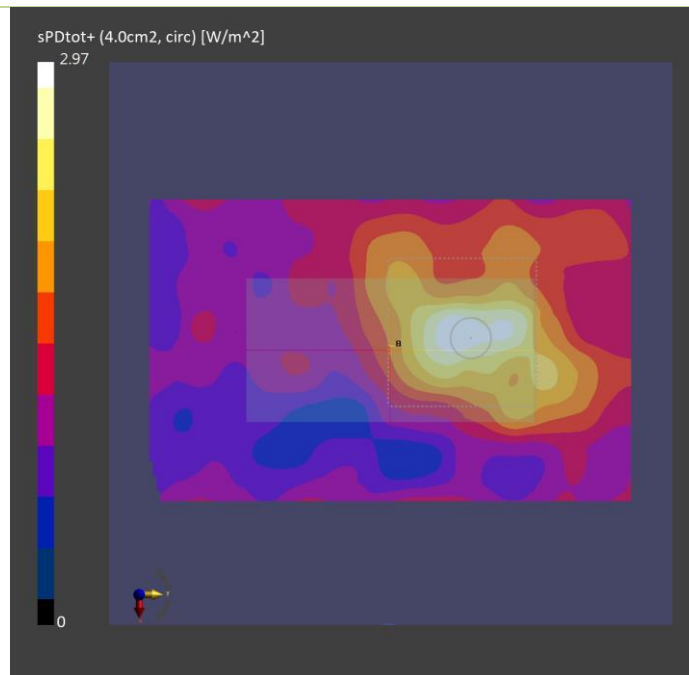
Phantom	Medium	Probe, Calibration Date	DAE, Calibration Date
mmWave- 1030	--Air--	EUmmWV4 - SN9438_F1-55GHz, 2022-07-18	DAE4 Sn1762, 2022-12-08

Scan Setup

	5G Scan
Grid Extents [mm]	98.0 x 98.0
Grid Steps [lambda]	0.125 x 0.125
Sensor Surface [mm]	5.0

Measurement Results

	5G Scan
Date	2023-06-30
Avg. Area [cm ²]	4.00
psPDn+ [W/m ²]	2.04
psPDtot+ [W/m ²]	2.97
psPDmod+ [W/m ²]	4.05
E _{max} [V/m]	48.2
Power Drift [dB]	-0.09





BUREAU
VERITAS

Appendix D. Maximum Target Conducted Power

The maximum conducted average power (Unit: dBm) including tune-up tolerance is shown as below.



Tune-up Power (Full)							
WLAN 2.4GHz							
Mode	Channel	Frequency	SISO Ant 0 Max Tune up	SISO Ant 1 Max Tune up	MIMO Ant 0 Tune up	MIMO Ant 1 Tune up	MIMO Ant 0+1 Max Tune up
802.11b	1	2412	13.50	13.50	13.50	13.50	16.50
	6	2437	13.50	13.50	13.50	13.50	16.50
	11	2462	13.50	13.50	13.50	13.50	16.50
	12	2467	13.50	13.50	13.50	13.50	16.50
	13	2472	13.00	13.00	13.00	13.00	16.00
802.11g	1	2412	13.50	13.50	13.50	13.50	16.50
	6	2437	13.50	13.50	13.50	13.50	16.50
	11	2462	13.50	13.50	13.50	13.50	16.50
	12	2467	13.50	13.50	13.50	13.50	16.50
	13	2472	-2.25	-2.25	-2.25	-2.25	0.75
802.11n HT20	1	2412	13.50	13.50	13.50	13.50	16.50
	6	2437	13.50	13.50	13.50	13.50	16.50
	11	2462	13.50	13.50	13.50	13.50	16.50
	12	2467	13.50	13.50	13.50	13.50	16.50
	13	2472	-2.75	-2.75	-2.75	-2.75	0.25
802.11n HT40	3	2422	13.50	13.50	13.50	13.50	16.50
	6	2437	13.50	13.50	13.50	13.50	16.50
	9	2452	13.50	13.50	13.50	13.50	16.50
	10	2457	13.50	13.50	13.50	13.50	16.50
	11	2462	-3.25	-3.25	-3.25	-3.25	-0.25
802.11ac VHT20	1	2412	13.50	13.50	13.50	13.50	16.50
	6	2437	13.50	13.50	13.50	13.50	16.50
	11	2462	13.50	13.50	13.50	13.50	16.50
	12	2467	13.50	13.50	13.50	13.50	16.50
	13	2472	-2.75	-2.75	-2.75	-2.75	0.25
802.11ac VHT40	3	2422	13.50	13.50	13.50	13.50	16.50
	6	2437	13.50	13.50	13.50	13.50	16.50
	9	2452	13.50	13.50	13.50	13.50	16.50
	10	2457	13.50	13.50	13.50	13.50	16.50
	11	2462	-3.25	-3.25	-3.25	-3.25	-0.25
802.11ax HE20	1	2412	13.50	13.50	13.50	13.50	16.50
	6	2437	13.50	13.50	13.50	13.50	16.50
	11	2462	13.50	13.50	13.50	13.50	16.50
	12	2467	13.50	13.50	13.50	13.50	16.50
	13	2472	-2.75	-2.75	-2.75	-2.75	0.25
802.11ax HE40	3	2422	13.50	13.50	13.50	13.50	16.50
	6	2437	13.50	13.50	13.50	13.50	16.50
	9	2452	13.50	13.50	13.50	13.50	16.50
	10	2457	13.50	13.50	13.50	13.50	16.50
	11	2462	-3.25	-3.25	-3.25	-3.25	-0.25
802.11be EHT20	1	2412	13.50	13.50	13.50	13.50	16.50
	6	2437	13.50	13.50	13.50	13.50	16.50
	11	2462	13.50	13.50	13.50	13.50	16.50
	12	2467	13.50	13.50	13.50	13.50	16.50
	13	2472	-2.75	-2.75	-2.75	-2.75	0.25
802.11be EHT40	3	2422	13.50	13.50	13.50	13.50	16.50
	6	2437	13.50	13.50	13.50	13.50	16.50
	9	2452	13.50	13.50	13.50	13.50	16.50
	10	2457	13.50	13.50	13.50	13.50	16.50
	11	2462	-3.25	-3.25	-3.25	-3.25	-0.25



Tune-up Power (Full)			
Bluetooth 1TX Diversity			
Mode	Channel	Frequency	Ant 0&1 Max Tune-up
BR / EDR	0	2402	16
	39	2441	16
	78	2480	16
LE	0	2402	16
	19	2440	16
	39	2480	16



Tune-up Power (Full)							
WLAN 5.2GHz							
Mode	Channel	Frequency	SISO Ant 0 Max Tune up	SISO Ant 1 Max Tune up	MIMO Ant 0 Tune up	MIMO Ant 1 Tune up	MIMO Ant 0+1 Max Tune up
802.11a	36	5180	11.50	11.50	11.50	11.50	14.50
	40	5200	11.50	11.50	11.50	11.50	14.50
	44	5220	11.50	11.50	11.50	11.50	14.50
	48	5240	11.50	11.50	11.50	11.50	14.50
802.11n HT20	36	5180	11.50	11.50	11.50	11.50	14.50
	40	5200	11.50	11.50	11.50	11.50	14.50
	44	5220	11.50	11.50	11.50	11.50	14.50
	48	5240	11.50	11.50	11.50	11.50	14.50
802.11n HT40	38	5190	11.50	11.50	11.50	11.50	14.50
	46	5230	11.50	11.50	11.50	11.50	14.50
802.11ac VHT20	36	5180	11.50	11.50	11.50	11.50	14.50
	40	5200	11.50	11.50	11.50	11.50	14.50
	44	5220	11.50	11.50	11.50	11.50	14.50
	48	5240	11.50	11.50	11.50	11.50	14.50
802.11ac VHT40	38	5190	11.50	11.50	11.50	11.50	14.50
	46	5230	11.50	11.50	11.50	11.50	14.50
802.11ac VHT80	42	5210	11.50	11.50	11.50	11.50	14.50
802.11ax HE20	36	5180	11.50	11.50	11.50	11.50	14.50
	40	5200	11.50	11.50	11.50	11.50	14.50
	44	5220	11.50	11.50	11.50	11.50	14.50
	48	5240	11.50	11.50	11.50	11.50	14.50
802.11ax HE40	38	5190	11.50	11.50	11.50	11.50	14.50
	46	5230	11.50	11.50	11.50	11.50	14.50
802.11ax HE80	42	5210	11.50	11.50	11.50	11.50	14.50
802.11be EHT20	36	5180	11.50	11.50	11.50	11.50	14.50
	40	5200	11.50	11.50	11.50	11.50	14.50
	44	5220	11.50	11.50	11.50	11.50	14.50
	48	5240	11.50	11.50	11.50	11.50	14.50
802.11be EHT40	38	5190	11.50	11.50	11.50	11.50	14.50
	46	5230	11.50	11.50	11.50	11.50	14.50
802.11be EHT80	42	5210	11.50	11.50	11.50	11.50	14.50

Tune-up Power (Full)							
WLAN 5.3GHz							
Mode	Channel	Frequency	SISO Ant 0 Max Tune up	SISO Ant 1 Max Tune up	MIMO Ant 0 Tune up	MIMO Ant 1 Tune up	MIMO Ant 0+1 Max Tune up
802.11a	52	5260	11.50	11.50	11.50	11.50	14.50
	56	5280	11.50	11.50	11.50	11.50	14.50
	60	5300	11.50	11.50	11.50	11.50	14.50
	64	5320	11.50	11.50	11.50	11.50	14.50
802.11n HT20	52	5260	11.50	11.50	11.50	11.50	14.50
	56	5280	11.50	11.50	11.50	11.50	14.50
	60	5300	11.50	11.50	11.50	11.50	14.50
	64	5320	11.50	11.50	11.50	11.50	14.50
802.11n HT40	54	5270	11.50	11.50	11.50	11.50	14.50
	62	5310	11.50	11.50	11.50	11.50	14.50
802.11ac VHT20	52	5260	11.50	11.50	11.50	11.50	14.50
	56	5280	11.50	11.50	11.50	11.50	14.50
	60	5300	11.50	11.50	11.50	11.50	14.50
	64	5320	11.50	11.50	11.50	11.50	14.50
802.11ac VHT40	54	5270	11.50	11.50	11.50	11.50	14.50
	62	5310	11.50	11.50	11.50	11.50	14.50
802.11ac VHT80	58	5290	11.50	11.50	11.50	11.50	14.50
802.11ac VHT160	50	5250	11.50	11.50	11.50	11.50	14.50
802.11ax HE20	52	5260	11.50	11.50	11.50	11.50	14.50
	56	5280	11.50	11.50	11.50	11.50	14.50
	60	5300	11.50	11.50	11.50	11.50	14.50
	64	5320	11.50	11.50	11.50	11.50	14.50
802.11ax HE40	54	5270	11.50	11.50	11.50	11.50	14.50
	62	5310	11.50	11.50	11.50	11.50	14.50
802.11ax HE80	58	5290	11.50	11.50	11.50	11.50	14.50
802.11ax HE160	50	5250	11.50	11.50	11.50	11.50	14.50
802.11be EHT20	52	5260	11.50	11.50	11.50	11.50	14.50
	56	5280	11.50	11.50	11.50	11.50	14.50
	60	5300	11.50	11.50	11.50	11.50	14.50
	64	5320	11.50	11.50	11.50	11.50	14.50
802.11be EHT40	54	5270	11.50	11.50	11.50	11.50	14.50
	62	5310	11.50	11.50	11.50	11.50	14.50
802.11be EHT80	58	5290	11.50	11.50	11.50	11.50	14.50
802.11be EH160	50	5250	11.50	11.50	11.50	11.50	14.50

Tune-up Power (Full)							
WLAN 5.6GHz							
Mode	Channel	Frequency	SISO Ant 0 Max Tune up	SISO Ant 1 Max Tune up	MIMO Ant 0 Tune up	MIMO Ant 1 Tune up	MIMO Ant 0+1 Max Tune up
802.11a	100	5500	10.0	10.0	10.0	10.0	13.0
	116	5580	10.0	10.0	10.0	10.0	13.0
	120	5600	10.0	10.0	10.0	10.0	13.0
	124	5620	10.0	10.0	10.0	10.0	13.0
	132	5660	10.0	10.0	10.0	10.0	13.0
	140	5700	10.0	10.0	10.0	10.0	13.0
	144	5720	10.0	10.0	10.0	10.0	13.0
802.11n HT20	100	5500	10.0	10.0	10.0	10.0	13.0
	116	5580	10.0	10.0	10.0	10.0	13.0
	120	5600	10.0	10.0	10.0	10.0	13.0
	124	5620	10.0	10.0	10.0	10.0	13.0
	132	5660	10.0	10.0	10.0	10.0	13.0
	140	5700	10.0	10.0	10.0	10.0	13.0
	144	5720	10.0	10.0	10.0	10.0	13.0
802.11n HT40	102	5510	10.0	10.0	10.0	10.0	13.0
	110	5550	10.0	10.0	10.0	10.0	13.0
	118	5590	10.0	10.0	10.0	10.0	13.0
	126	5630	10.0	10.0	10.0	10.0	13.0
	134	5670	10.0	10.0	10.0	10.0	13.0
	142	5710	10.0	10.0	10.0	10.0	13.0
	144	5720	10.0	10.0	10.0	10.0	13.0
802.11ac VHT20	100	5500	10.0	10.0	10.0	10.0	13.0
	116	5580	10.0	10.0	10.0	10.0	13.0
	120	5600	10.0	10.0	10.0	10.0	13.0
	124	5620	10.0	10.0	10.0	10.0	13.0
	132	5660	10.0	10.0	10.0	10.0	13.0
	140	5700	10.0	10.0	10.0	10.0	13.0
	144	5720	10.0	10.0	10.0	10.0	13.0
802.11ac VHT40	102	5510	10.0	10.0	10.0	10.0	13.0
	110	5550	10.0	10.0	10.0	10.0	13.0
	118	5590	10.0	10.0	10.0	10.0	13.0
	126	5630	10.0	10.0	10.0	10.0	13.0
	134	5670	10.0	10.0	10.0	10.0	13.0
	142	5710	10.0	10.0	10.0	10.0	13.0
	144	5720	10.0	10.0	10.0	10.0	13.0
802.11ac VHT80	106	5530	10.0	10.0	10.0	10.0	13.0
	122	5610	10.0	10.0	10.0	10.0	13.0
	138	5690	10.0	10.0	10.0	10.0	13.0
802.11ac VHT160	114	5570	10.0	10.0	10.0	10.0	13.0

Tune-up Power (Full)							
WLAN 5.6GHz							
Mode	Channel	Frequency	SISO Ant 0 Max Tune up	SISO Ant 1 Max Tune up	MIMO Ant 0 Tune up	MIMO Ant 1 Tune up	MIMO Ant 0+1 Max Tune up
802.11ax HE20	100	5500	10.0	10.0	10.0	10.0	13.0
	116	5580	10.0	10.0	10.0	10.0	13.0
	120	5600	10.0	10.0	10.0	10.0	13.0
	124	5620	10.0	10.0	10.0	10.0	13.0
	132	5660	10.0	10.0	10.0	10.0	13.0
	140	5700	10.0	10.0	10.0	10.0	13.0
	144	5720	10.0	10.0	10.0	10.0	13.0
802.11ax HE40	102	5510	10.0	10.0	10.0	10.0	13.0
	110	5550	10.0	10.0	10.0	10.0	13.0
	118	5590	10.0	10.0	10.0	10.0	13.0
	126	5630	10.0	10.0	10.0	10.0	13.0
	134	5670	10.0	10.0	10.0	10.0	13.0
802.11ax HE80	142	5710	10.0	10.0	10.0	10.0	13.0
	106	5530	10.0	10.0	10.0	10.0	13.0
	122	5610	10.0	10.0	10.0	10.0	13.0
802.11ax HE160	138	5690	10.0	10.0	10.0	10.0	13.0
	114	5570	10.0	10.0	10.0	10.0	13.0
802.11be EHT20	100	5500	10.0	10.0	10.0	10.0	13.0
	116	5580	10.0	10.0	10.0	10.0	13.0
	120	5600	10.0	10.0	10.0	10.0	13.0
	124	5620	10.0	10.0	10.0	10.0	13.0
	132	5660	10.0	10.0	10.0	10.0	13.0
	140	5700	10.0	10.0	10.0	10.0	13.0
	144	5720	10.0	10.0	10.0	10.0	13.0
802.11be EHT40	102	5510	10.0	10.0	10.0	10.0	13.0
	110	5550	10.0	10.0	10.0	10.0	13.0
	118	5590	10.0	10.0	10.0	10.0	13.0
	126	5630	10.0	10.0	10.0	10.0	13.0
	134	5670	10.0	10.0	10.0	10.0	13.0
802.11be EHT80	142	5710	10.0	10.0	10.0	10.0	13.0
	106	5530	10.0	10.0	10.0	10.0	13.0
	122	5610	10.0	10.0	10.0	10.0	13.0
802.11be EHT160	138	5690	10.0	10.0	10.0	10.0	13.0
	114	5570	10.0	10.0	10.0	10.0	13.0

Tune-up Power (Full)							
WLAN 5.8GHz							
Mode	Channel	Frequency	SISO Ant 0 Max Tune up	SISO Ant 1 Max Tune up	MIMO Ant 0 Tune up	MIMO Ant 1 Tune up	MIMO Ant 0+1 Max Tune up
802.11a	149	5745	10.0	10.0	10.0	10.0	13.0
	153	5765	10.0	10.0	10.0	10.0	13.0
	157	5785	10.0	10.0	10.0	10.0	13.0
	161	5805	10.0	10.0	10.0	10.0	13.0
	165	5825	10.0	10.0	10.0	10.0	13.0
802.11n HT20	149	5745	10.0	10.0	10.0	10.0	13.0
	153	5765	10.0	10.0	10.0	10.0	13.0
	157	5785	10.0	10.0	10.0	10.0	13.0
	161	5805	10.0	10.0	10.0	10.0	13.0
	165	5825	10.0	10.0	10.0	10.0	13.0
802.11n HT40	151	5755	10.0	10.0	10.0	10.0	13.0
	159	5795	10.0	10.0	10.0	10.0	13.0
802.11ac VHT20	149	5745	10.0	10.0	10.0	10.0	13.0
	153	5765	10.0	10.0	10.0	10.0	13.0
	157	5785	10.0	10.0	10.0	10.0	13.0
	161	5805	10.0	10.0	10.0	10.0	13.0
	165	5825	10.0	10.0	10.0	10.0	13.0
802.11ac VHT40	151	5755	10.0	10.0	10.0	10.0	13.0
	159	5795	10.0	10.0	10.0	10.0	13.0
802.11ac VHT80	155	5775	10.0	10.0	10.0	10.0	13.0
802.11ax HE20	149	5745	10.0	10.0	10.0	10.0	13.0
	153	5765	10.0	10.0	10.0	10.0	13.0
	157	5785	10.0	10.0	10.0	10.0	13.0
	161	5805	10.0	10.0	10.0	10.0	13.0
	165	5825	10.0	10.0	10.0	10.0	13.0
802.11ax HE40	151	5755	10.0	10.0	10.0	10.0	13.0
	159	5795	10.0	10.0	10.0	10.0	13.0
802.11ax HE80	155	5775	10.0	10.0	10.0	10.0	13.0
802.11be EHT20	149	5745	10.0	10.0	10.0	10.0	13.0
	153	5765	10.0	10.0	10.0	10.0	13.0
	157	5785	10.0	10.0	10.0	10.0	13.0
	161	5805	10.0	10.0	10.0	10.0	13.0
	165	5825	10.0	10.0	10.0	10.0	13.0
802.11be EHT40	151	5755	10.0	10.0	10.0	10.0	13.0
	159	5795	10.0	10.0	10.0	10.0	13.0
802.11be EHT80	155	5775	10.0	10.0	10.0	10.0	13.0



Tune-up Power (Full)							
WLAN 5.9GHz							
Mode	Channel	Frequency	SISO Ant 0 Max Tune up	SISO Ant 1 Max Tune up	MIMO Ant 0 Tune up	MIMO Ant 1 Tune up	MIMO Ant 0+1 Max Tune up
802.11a	169	5845	10.0	10.0	10.0	10.0	13.0
	173	5865	10.0	10.0	10.0	10.0	13.0
	177	5885	10.0	10.0	10.0	10.0	13.0
802.11n HT20	169	5845	10.0	10.0	10.0	10.0	13.0
	173	5865	10.0	10.0	10.0	10.0	13.0
	177	5885	10.0	10.0	10.0	10.0	13.0
802.11n HT40	167	5835	10.0	10.0	10.0	10.0	13.0
	175	5875	10.0	10.0	10.0	10.0	13.0
802.11ac VHT20	169	5845	10.0	10.0	10.0	10.0	13.0
	173	5865	10.0	10.0	10.0	10.0	13.0
	177	5885	10.0	10.0	10.0	10.0	13.0
802.11ac VHT40	167	5835	10.0	10.0	10.0	10.0	13.0
	175	5875	10.0	10.0	10.0	10.0	13.0
802.11ac VHT80	171	5855	10.0	10.0	10.0	10.0	13.0
802.11ac VHT160	163	5815	10.0	10.0	10.0	10.0	13.0
802.11ax HE20	169	5845	10.0	10.0	10.0	10.0	13.0
	173	5865	10.0	10.0	10.0	10.0	13.0
	177	5885	10.0	10.0	10.0	10.0	13.0
802.11ax HE40	167	5835	10.0	10.0	10.0	10.0	13.0
	175	5875	10.0	10.0	10.0	10.0	13.0
802.11ax HE80	171	5855	10.0	10.0	10.0	10.0	13.0
802.11ax HE160	163	5815	10.0	10.0	10.0	10.0	13.0
802.11be EHT20	169	5845	10.0	10.0	10.0	10.0	13.0
	173	5865	10.0	10.0	10.0	10.0	13.0
	177	5885	10.0	10.0	10.0	10.0	13.0
802.11be EHT40	167	5835	10.0	10.0	10.0	10.0	13.0
	175	5875	10.0	10.0	10.0	10.0	13.0
802.11be EHT80	171	5855	10.0	10.0	10.0	10.0	13.0
802.11be EHT160	163	5815	10.0	10.0	10.0	10.0	13.0

Tune-up Power (Full)_SP Mode							
WLAN6G							
Mode	Channel	Frequency	SISO Ant 0 Max Tune up	SISO Ant 1 Max Tune up	MIMO Ant 0 Tune up	MIMO Ant 1 Tune up	MIMO Ant 0+1 Max Tune up
802.11a	1	5955	12.0	12.0	12.0	12.0	15.0
	5	5975	12.0	12.0	12.0	12.0	15.0
	9	5995	12.0	12.0	12.0	12.0	15.0
	13	6015	12.0	12.0	12.0	12.0	15.0
	17	6035	12.0	12.0	12.0	12.0	15.0
	21	6055	12.0	12.0	12.0	12.0	15.0
	25	6075	12.0	12.0	12.0	12.0	15.0
	29	6095	12.0	12.0	12.0	12.0	15.0
	33	6115	12.0	12.0	12.0	12.0	15.0
	37	6135	12.0	12.0	12.0	12.0	15.0
	41	6155	12.0	12.0	12.0	12.0	15.0
	45	6175	12.0	12.0	12.0	12.0	15.0
	49	6195	12.0	12.0	12.0	12.0	15.0
	53	6215	12.0	12.0	12.0	12.0	15.0
	57	6235	12.0	12.0	12.0	12.0	15.0
	61	6255	12.0	12.0	12.0	12.0	15.0
	65	6275	12.0	12.0	12.0	12.0	15.0
	69	6295	12.0	12.0	12.0	12.0	15.0
	73	6315	12.0	12.0	12.0	12.0	15.0
	77	6335	12.0	12.0	12.0	12.0	15.0
	81	6355	12.0	12.0	12.0	12.0	15.0
	85	6375	12.0	12.0	12.0	12.0	15.0
	89	6395	12.0	12.0	12.0	12.0	15.0
	93	6415	12.0	12.0	12.0	12.0	15.0
	117	6535	12.0	12.0	12.0	12.0	15.0
	121	6555	12.0	12.0	12.0	12.0	15.0
	125	6575	12.0	12.0	12.0	12.0	15.0
	129	6595	12.0	12.0	12.0	12.0	15.0
	133	6615	12.0	12.0	12.0	12.0	15.0
	137	6635	12.0	12.0	12.0	12.0	15.0
141	6655	12.0	12.0	12.0	12.0	15.0	
145	6675	12.0	12.0	12.0	12.0	15.0	
149	6695	12.0	12.0	12.0	12.0	15.0	
153	6715	12.0	12.0	12.0	12.0	15.0	
157	6735	12.0	12.0	12.0	12.0	15.0	
161	6755	12.0	12.0	12.0	12.0	15.0	
165	6775	12.0	12.0	12.0	12.0	15.0	
169	6795	12.0	12.0	12.0	12.0	15.0	
173	6815	12.0	12.0	12.0	12.0	15.0	
177	6835	12.0	12.0	12.0	12.0	15.0	
181	6855	12.0	12.0	12.0	12.0	15.0	

Tune-up Power (Full)_SP Mode							
WLAN6G							
Mode	Channel	Frequency	SISO Ant 0 Max Tune up	SISO Ant 1 Max Tune up	MIMO Ant 0 Tune up	MIMO Ant 1 Tune up	MIMO Ant 0+1 Max Tune up
802.11ax HE20	1	5955	12.0	12.0	12.0	12.0	15.0
	5	5975	12.0	12.0	12.0	12.0	15.0
	9	5995	12.0	12.0	12.0	12.0	15.0
	13	6015	12.0	12.0	12.0	12.0	15.0
	17	6035	12.0	12.0	12.0	12.0	15.0
	21	6055	12.0	12.0	12.0	12.0	15.0
	25	6075	12.0	12.0	12.0	12.0	15.0
	29	6095	12.0	12.0	12.0	12.0	15.0
	33	6115	12.0	12.0	12.0	12.0	15.0
	37	6135	12.0	12.0	12.0	12.0	15.0
	41	6155	12.0	12.0	12.0	12.0	15.0
	45	6175	12.0	12.0	12.0	12.0	15.0
	49	6195	12.0	12.0	12.0	12.0	15.0
	53	6215	12.0	12.0	12.0	12.0	15.0
	57	6235	12.0	12.0	12.0	12.0	15.0
	61	6255	12.0	12.0	12.0	12.0	15.0
	65	6275	12.0	12.0	12.0	12.0	15.0
	69	6295	12.0	12.0	12.0	12.0	15.0
	73	6315	12.0	12.0	12.0	12.0	15.0
	77	6335	12.0	12.0	12.0	12.0	15.0
	81	6355	12.0	12.0	12.0	12.0	15.0
	85	6375	12.0	12.0	12.0	12.0	15.0
	89	6395	12.0	12.0	12.0	12.0	15.0
	93	6415	12.0	12.0	12.0	12.0	15.0
	117	6535	12.0	12.0	12.0	12.0	15.0
	121	6555	12.0	12.0	12.0	12.0	15.0
	125	6575	12.0	12.0	12.0	12.0	15.0
	129	6595	12.0	12.0	12.0	12.0	15.0
	133	6615	12.0	12.0	12.0	12.0	15.0
	137	6635	12.0	12.0	12.0	12.0	15.0
	141	6655	12.0	12.0	12.0	12.0	15.0
	145	6675	12.0	12.0	12.0	12.0	15.0
	149	6695	12.0	12.0	12.0	12.0	15.0
153	6715	12.0	12.0	12.0	12.0	15.0	
157	6735	12.0	12.0	12.0	12.0	15.0	
161	6755	12.0	12.0	12.0	12.0	15.0	
165	6775	12.0	12.0	12.0	12.0	15.0	
169	6795	12.0	12.0	12.0	12.0	15.0	
173	6815	12.0	12.0	12.0	12.0	15.0	
177	6835	12.0	12.0	12.0	12.0	15.0	
181	6855	12.0	12.0	12.0	12.0	15.0	



Tune-up Power (Full)_SP Mode							
WLAN6G							
Mode	Channel	Frequency	SISO Ant 0 Max Tune up	SISO Ant 1 Max Tune up	MIMO Ant 0 Tune up	MIMO Ant 1 Tune up	MIMO Ant 0+1 Max Tune up
802.11ax HE40	3	5965	12.0	12.0	12.0	12.0	15.0
	11	6005	12.0	12.0	12.0	12.0	15.0
	19	6045	12.0	12.0	12.0	12.0	15.0
	27	6085	12.0	12.0	12.0	12.0	15.0
	35	6125	12.0	12.0	12.0	12.0	15.0
	43	6165	12.0	12.0	12.0	12.0	15.0
	51	6205	12.0	12.0	12.0	12.0	15.0
	59	6245	12.0	12.0	12.0	12.0	15.0
	67	6285	12.0	12.0	12.0	12.0	15.0
	75	6325	12.0	12.0	12.0	12.0	15.0
	83	6365	12.0	12.0	12.0	12.0	15.0
	91	6405	12.0	12.0	12.0	12.0	15.0
	123	6565	12.0	12.0	12.0	12.0	15.0
	131	6605	12.0	12.0	12.0	12.0	15.0
	139	6645	12.0	12.0	12.0	12.0	15.0
	147	6685	12.0	12.0	12.0	12.0	15.0
	155	6725	12.0	12.0	12.0	12.0	15.0
163	6765	12.0	12.0	12.0	12.0	15.0	
171	6805	12.0	12.0	12.0	12.0	15.0	
179	6845	12.0	12.0	12.0	12.0	15.0	
802.11ax HE80	7	5985	12.0	12.0	12.0	12.0	15.0
	23	6065	12.0	12.0	12.0	12.0	15.0
	39	6145	12.0	12.0	12.0	12.0	15.0
	55	6225	12.0	12.0	12.0	12.0	15.0
	71	6305	12.0	12.0	12.0	12.0	15.0
	87	6385	12.0	12.0	12.0	12.0	15.0
	135	6625	12.0	12.0	12.0	12.0	15.0
151	6705	12.0	12.0	12.0	12.0	15.0	
167	6785	12.0	12.0	12.0	12.0	15.0	
802.11ax HE160	15	6025	12.0	12.0	12.0	12.0	15.0
	47	6185	12.0	12.0	12.0	12.0	15.0
	79	6345	12.0	12.0	12.0	12.0	15.0
	143	6665	12.0	12.0	12.0	12.0	15.0

Tune-up Power (Full)_SP Mode							
WLAN6G							
Mode	Channel	Frequency	SISO Ant 0 Max Tune up	SISO Ant 1 Max Tune up	MIMO Ant 0 Tune up	MIMO Ant 1 Tune up	MIMO Ant 0+1 Max Tune up
802.11be EHT20	1	5955	12.0	12.0	12.0	12.0	15.0
	5	5975	12.0	12.0	12.0	12.0	15.0
	9	5995	12.0	12.0	12.0	12.0	15.0
	13	6015	12.0	12.0	12.0	12.0	15.0
	17	6035	12.0	12.0	12.0	12.0	15.0
	21	6055	12.0	12.0	12.0	12.0	15.0
	25	6075	12.0	12.0	12.0	12.0	15.0
	29	6095	12.0	12.0	12.0	12.0	15.0
	33	6115	12.0	12.0	12.0	12.0	15.0
	37	6135	12.0	12.0	12.0	12.0	15.0
	41	6155	12.0	12.0	12.0	12.0	15.0
	45	6175	12.0	12.0	12.0	12.0	15.0
	49	6195	12.0	12.0	12.0	12.0	15.0
	53	6215	12.0	12.0	12.0	12.0	15.0
	57	6235	12.0	12.0	12.0	12.0	15.0
	61	6255	12.0	12.0	12.0	12.0	15.0
	65	6275	12.0	12.0	12.0	12.0	15.0
	69	6295	12.0	12.0	12.0	12.0	15.0
	73	6315	12.0	12.0	12.0	12.0	15.0
	77	6335	12.0	12.0	12.0	12.0	15.0
	81	6355	12.0	12.0	12.0	12.0	15.0
	85	6375	12.0	12.0	12.0	12.0	15.0
	89	6395	12.0	12.0	12.0	12.0	15.0
	93	6415	12.0	12.0	12.0	12.0	15.0
	117	6535	12.0	12.0	12.0	12.0	15.0
	121	6555	12.0	12.0	12.0	12.0	15.0
	125	6575	12.0	12.0	12.0	12.0	15.0
	129	6595	12.0	12.0	12.0	12.0	15.0
	133	6615	12.0	12.0	12.0	12.0	15.0
	137	6635	12.0	12.0	12.0	12.0	15.0
141	6655	12.0	12.0	12.0	12.0	15.0	
145	6675	12.0	12.0	12.0	12.0	15.0	
149	6695	12.0	12.0	12.0	12.0	15.0	
153	6715	12.0	12.0	12.0	12.0	15.0	
157	6735	12.0	12.0	12.0	12.0	15.0	
161	6755	12.0	12.0	12.0	12.0	15.0	
165	6775	12.0	12.0	12.0	12.0	15.0	
169	6795	12.0	12.0	12.0	12.0	15.0	
173	6815	12.0	12.0	12.0	12.0	15.0	
177	6835	12.0	12.0	12.0	12.0	15.0	
181	6855	12.0	12.0	12.0	12.0	15.0	

Tune-up Power (Full)_SP Mode							
WLAN6G							
Mode	Channel	Frequency	SISO Ant 0 Max Tune up	SISO Ant 1 Max Tune up	MIMO Ant 0 Tune up	MIMO Ant 1 Tune up	MIMO Ant 0+1 Max Tune up
802.11be EHT40	3	5965	12.0	12.0	12.0	12.0	15.0
	11	6005	12.0	12.0	12.0	12.0	15.0
	19	6045	12.0	12.0	12.0	12.0	15.0
	27	6085	12.0	12.0	12.0	12.0	15.0
	35	6125	12.0	12.0	12.0	12.0	15.0
	43	6165	12.0	12.0	12.0	12.0	15.0
	51	6205	12.0	12.0	12.0	12.0	15.0
	59	6245	12.0	12.0	12.0	12.0	15.0
	67	6285	12.0	12.0	12.0	12.0	15.0
	75	6325	12.0	12.0	12.0	12.0	15.0
	83	6365	12.0	12.0	12.0	12.0	15.0
	91	6405	12.0	12.0	12.0	12.0	15.0
	123	6565	12.0	12.0	12.0	12.0	15.0
	131	6605	12.0	12.0	12.0	12.0	15.0
	139	6645	12.0	12.0	12.0	12.0	15.0
	147	6685	12.0	12.0	12.0	12.0	15.0
	155	6725	12.0	12.0	12.0	12.0	15.0
163	6765	12.0	12.0	12.0	12.0	15.0	
171	6805	12.0	12.0	12.0	12.0	15.0	
179	6845	12.0	12.0	12.0	12.0	15.0	
802.11be EHT80	7	5985	12.0	12.0	12.0	12.0	15.0
	23	6065	12.0	12.0	12.0	12.0	15.0
	39	6145	12.0	12.0	12.0	12.0	15.0
	55	6225	12.0	12.0	12.0	12.0	15.0
	71	6305	12.0	12.0	12.0	12.0	15.0
	87	6385	12.0	12.0	12.0	12.0	15.0
	135	6625	12.0	12.0	12.0	12.0	15.0
151	6705	12.0	12.0	12.0	12.0	15.0	
802.11be EHT160	167	6785	12.0	12.0	12.0	12.0	15.0
	15	6025	12.0	12.0	12.0	12.0	15.0
	47	6185	12.0	12.0	12.0	12.0	15.0
	79	6345	12.0	12.0	12.0	12.0	15.0
802.11be EHT320	143	6665	12.0	12.0	12.0	12.0	15.0
	31	6105	12.0	12.0	12.0	12.0	15.0
	63	6265	12.0	12.0	12.0	12.0	15.0
	95	6425	12.0	12.0	12.0	12.0	15.0
	127	6585	12.0	12.0	12.0	12.0	15.0

Tune-up Power (Full)_LPI					
WLAN6G					
Mode	Channel	Frequency	MIMO Ant 0 Tune up	MIMO Ant 1 Tune up	MIMO Ant 0+1 Max Tune up
802.11a	1	5955	3.25	3.25	6.25
	5	5975	3.25	3.25	6.25
	9	5995	3.25	3.25	6.25
	13	6015	3.25	3.25	6.25
	17	6035	3.25	3.25	6.25
	21	6055	3.25	3.25	6.25
	25	6075	3.25	3.25	6.25
	29	6095	3.25	3.25	6.25
	33	6115	3.25	3.25	6.25
	37	6135	3.25	3.25	6.25
	41	6155	3.25	3.25	6.25
	45	6175	3.25	3.25	6.25
	49	6195	3.25	3.25	6.25
	53	6215	3.25	3.25	6.25
	57	6235	3.25	3.25	6.25
	61	6255	3.25	3.25	6.25
	65	6275	3.25	3.25	6.25
	69	6295	3.25	3.25	6.25
	73	6315	3.25	3.25	6.25
	77	6335	3.25	3.25	6.25
	81	6355	3.25	3.25	6.25
	85	6375	3.25	3.25	6.25
	89	6395	3.25	3.25	6.25
	93	6415	3.25	3.25	6.25
	97	6435	3.50	3.50	6.50
	101	6455	3.50	3.50	6.50
	105	6475	3.50	3.50	6.50
	109	6495	3.50	3.50	6.50
	113	6515	3.50	3.50	6.50
	117	6535	2.50	2.50	5.50
	121	6555	2.50	2.50	5.50
	125	6575	2.50	2.50	5.50
	129	6595	2.50	2.50	5.50
133	6615	2.50	2.50	5.50	
137	6635	2.50	2.50	5.50	
141	6655	2.50	2.50	5.50	
145	6675	2.50	2.50	5.50	
149	6695	2.50	2.50	5.50	
153	6715	2.50	2.50	5.50	
157	6735	2.50	2.50	5.50	
161	6755	2.50	2.50	5.50	
165	6775	2.50	2.50	5.50	
169	6795	2.50	2.50	5.50	
173	6815	2.50	2.50	5.50	
177	6835	2.50	2.50	5.50	
181	6855	2.50	2.50	5.50	
185	6875	2.50	2.50	5.50	
189	6895	2.50	2.50	5.50	
193	6915	2.50	2.50	5.50	
197	6935	2.50	2.50	5.50	
201	6955	2.50	2.50	5.50	
205	6975	2.50	2.50	5.50	
209	6995	2.50	2.50	5.50	
213	7015	2.50	2.50	5.50	
217	7035	2.50	2.50	5.50	
221	7055	2.50	2.50	5.50	
225	7075	2.50	2.50	5.50	
229	7095	2.50	2.50	5.50	
233	7115	2.50	2.50	5.50	

Tune-up Power (Full)_LPI					
WLAN6G					
Mode	Channel	Frequency	MIMO Ant 0 Tune up	MIMO Ant 1 Tune up	MIMO Ant 0+1 Max Tune up
802.11ax HE20	1	5955	3.75	3.75	6.75
	5	5975	3.75	3.75	6.75
	9	5995	3.75	3.75	6.75
	13	6015	3.75	3.75	6.75
	17	6035	3.75	3.75	6.75
	21	6055	3.75	3.75	6.75
	25	6075	3.75	3.75	6.75
	29	6095	3.75	3.75	6.75
	33	6115	3.75	3.75	6.75
	37	6135	3.75	3.75	6.75
	41	6155	3.75	3.75	6.75
	45	6175	3.75	3.75	6.75
	49	6195	3.75	3.75	6.75
	53	6215	3.75	3.75	6.75
	57	6235	3.75	3.75	6.75
	61	6255	3.75	3.75	6.75
	65	6275	3.75	3.75	6.75
	69	6295	3.75	3.75	6.75
	73	6315	3.75	3.75	6.75
	77	6335	3.75	3.75	6.75
	81	6355	3.75	3.75	6.75
	85	6375	3.75	3.75	6.75
	89	6395	3.75	3.75	6.75
	93	6415	3.75	3.75	6.75
	97	6435	3.50	3.50	6.50
	101	6455	3.50	3.50	6.50
	105	6475	3.50	3.50	6.50
	109	6495	3.50	3.50	6.50
	113	6515	3.50	3.50	6.50
	117	6535	3.50	3.50	6.50
	121	6555	3.50	3.50	6.50
	125	6575	3.50	3.50	6.50
	129	6595	3.50	3.50	6.50
133	6615	3.50	3.50	6.50	
137	6635	3.50	3.50	6.50	
141	6655	3.50	3.50	6.50	
145	6675	3.50	3.50	6.50	
149	6695	3.50	3.50	6.50	
153	6715	3.50	3.50	6.50	
157	6735	3.50	3.50	6.50	
161	6755	3.50	3.50	6.50	
165	6775	3.50	3.50	6.50	
169	6795	3.50	3.50	6.50	
173	6815	3.50	3.50	6.50	
177	6835	3.50	3.50	6.50	
181	6855	3.50	3.50	6.50	
185	6875	3.50	3.50	6.50	
189	6895	3.50	3.50	6.50	
193	6915	3.50	3.50	6.50	
197	6935	3.50	3.50	6.50	
201	6955	3.50	3.50	6.50	
205	6975	3.50	3.50	6.50	
209	6995	3.50	3.50	6.50	
213	7015	3.50	3.50	6.50	
217	7035	3.50	3.50	6.50	
221	7055	3.50	3.50	6.50	
225	7075	3.50	3.50	6.50	
229	7095	3.50	3.50	6.50	
233	7115	-7.50	-7.50	-4.50	

Tune-up Power (Full)_LPI					
WLAN6G					
Mode	Channel	Frequency	MIMO Ant 0 Tune up	MIMO Ant 1 Tune up	MIMO Ant 0+1 Max Tune up
802.11ax HE40	3	5965	8.25	8.25	11.25
	11	6005	8.25	8.25	11.25
	19	6045	8.25	8.25	11.25
	27	6085	8.25	8.25	11.25
	35	6125	8.25	8.25	11.25
	43	6165	8.25	8.25	11.25
	51	6205	8.25	8.25	11.25
	59	6245	8.25	8.25	11.25
	67	6285	8.25	8.25	11.25
	75	6325	8.25	8.25	11.25
	83	6365	8.25	8.25	11.25
	91	6405	8.25	8.25	11.25
	99	6445	8.25	8.25	11.25
	107	6485	8.25	8.25	11.25
	115	6525	8.25	8.25	11.25
	123	6565	8.25	8.25	11.25
	131	6605	8.25	8.25	11.25
	139	6645	8.25	8.25	11.25
	147	6685	8.25	8.25	11.25
	155	6725	8.25	8.25	11.25
	163	6765	8.25	8.25	11.25
	171	6805	8.25	8.25	11.25
179	6845	8.25	8.25	11.25	
187	6885	7.25	7.25	10.25	
195	6925	7.25	7.25	10.25	
203	6965	7.25	7.25	10.25	
211	7005	7.25	7.25	10.25	
219	7045	7.25	7.25	10.25	
227	7085	7.25	7.25	10.25	
802.11ax HE80	7	5985	9.25	9.25	12.25
	23	6065	9.25	9.25	12.25
	39	6145	9.25	9.25	12.25
	55	6225	9.25	9.25	12.25
	71	6305	9.25	9.25	12.25
	87	6385	9.25	9.25	12.25
	103	6465	9.75	9.75	12.75
	119	6545	9.75	9.75	12.75
	135	6625	9.75	9.75	12.75
	151	6705	9.75	9.75	12.75
	167	6785	9.75	9.75	12.75
	183	6865	9.75	9.75	12.75
199	6945	9.75	9.75	12.75	
215	7025	9.75	9.75	12.75	
802.11ax HE160	15	6025	11.00	11.00	14.00
	47	6185	11.00	11.00	14.00
	79	6345	11.00	11.00	14.00
	111	6505	11.00	11.00	14.00
	143	6665	11.00	11.00	14.00
	175	6825	11.00	11.00	14.00
	207	6985	11.00	11.00	14.00

Tune-up Power (Full)_LPI					
WLAN6G					
Mode	Channel	Frequency	MIMO Ant 0 Tune up	MIMO Ant 1 Tune up	MIMO Ant 0+1 Max Tune up
802.11be EHT20	1	5955	3.75	3.75	6.75
	5	5975	3.75	3.75	6.75
	9	5995	3.75	3.75	6.75
	13	6015	3.75	3.75	6.75
	17	6035	3.75	3.75	6.75
	21	6055	3.75	3.75	6.75
	25	6075	3.75	3.75	6.75
	29	6095	3.75	3.75	6.75
	33	6115	3.75	3.75	6.75
	37	6135	3.75	3.75	6.75
	41	6155	3.75	3.75	6.75
	45	6175	3.75	3.75	6.75
	49	6195	3.75	3.75	6.75
	53	6215	3.75	3.75	6.75
	57	6235	3.75	3.75	6.75
	61	6255	3.75	3.75	6.75
	65	6275	3.75	3.75	6.75
	69	6295	3.75	3.75	6.75
	73	6315	3.75	3.75	6.75
	77	6335	3.75	3.75	6.75
	81	6355	3.75	3.75	6.75
	85	6375	3.75	3.75	6.75
	89	6395	3.75	3.75	6.75
	93	6415	3.75	3.75	6.75
	97	6435	3.50	3.50	6.50
	101	6455	3.50	3.50	6.50
	105	6475	3.50	3.50	6.50
	109	6495	3.50	3.50	6.50
	113	6515	3.50	3.50	6.50
	117	6535	3.50	3.50	6.50
	121	6555	3.50	3.50	6.50
	125	6575	3.50	3.50	6.50
	129	6595	3.50	3.50	6.50
133	6615	3.50	3.50	6.50	
137	6635	3.50	3.50	6.50	
141	6655	3.50	3.50	6.50	
145	6675	3.50	3.50	6.50	
149	6695	3.50	3.50	6.50	
153	6715	3.50	3.50	6.50	
157	6735	3.50	3.50	6.50	
161	6755	3.50	3.50	6.50	
165	6775	3.50	3.50	6.50	
169	6795	3.50	3.50	6.50	
173	6815	3.50	3.50	6.50	
177	6835	3.50	3.50	6.50	
181	6855	3.50	3.50	6.50	
185	6875	3.50	3.50	6.50	
189	6895	3.50	3.50	6.50	
193	6915	3.50	3.50	6.50	
197	6935	3.50	3.50	6.50	
201	6955	3.50	3.50	6.50	
205	6975	3.50	3.50	6.50	
209	6995	3.50	3.50	6.50	
213	7015	3.50	3.50	6.50	
217	7035	3.50	3.50	6.50	
221	7055	3.50	3.50	6.50	
225	7075	3.50	3.50	6.50	
229	7095	3.50	3.50	6.50	
233	7115	-7.50	-7.50	-4.50	

Tune-up Power (Full)_LPI					
WLAN6G					
Mode	Channel	Frequency	MIMO Ant 0 Tune up	MIMO Ant 1 Tune up	MIMO Ant 0+1 Max Tune up
802.11be EHT40	3	5965	8.25	8.25	11.25
	11	6005	8.25	8.25	11.25
	19	6045	8.25	8.25	11.25
	27	6085	8.25	8.25	11.25
	35	6125	8.25	8.25	11.25
	43	6165	8.25	8.25	11.25
	51	6205	8.25	8.25	11.25
	59	6245	8.25	8.25	11.25
	67	6285	8.25	8.25	11.25
	75	6325	8.25	8.25	11.25
	83	6365	8.25	8.25	11.25
	91	6405	8.25	8.25	11.25
	99	6445	8.25	8.25	11.25
	107	6485	8.25	8.25	11.25
	115	6525	8.25	8.25	11.25
	123	6565	8.25	8.25	11.25
	131	6605	8.25	8.25	11.25
	139	6645	8.25	8.25	11.25
	147	6685	8.25	8.25	11.25
	155	6725	8.25	8.25	11.25
	163	6765	8.25	8.25	11.25
	171	6805	8.25	8.25	11.25
179	6845	8.25	8.25	11.25	
187	6885	7.25	7.25	10.25	
195	6925	7.25	7.25	10.25	
203	6965	7.25	7.25	10.25	
211	7005	7.25	7.25	10.25	
219	7045	7.25	7.25	10.25	
227	7085	7.25	7.25	10.25	
802.11be EHT80	7	5985	9.25	9.25	12.25
	23	6065	9.25	9.25	12.25
	39	6145	9.25	9.25	12.25
	55	6225	9.25	9.25	12.25
	71	6305	9.25	9.25	12.25
	87	6385	9.25	9.25	12.25
	103	6465	9.75	9.75	12.75
	119	6545	9.75	9.75	12.75
	135	6625	9.75	9.75	12.75
	151	6705	9.75	9.75	12.75
	167	6785	9.75	9.75	12.75
	183	6865	9.75	9.75	12.75
199	6945	9.75	9.75	12.75	
215	7025	9.75	9.75	12.75	
802.11be EHT160	15	6025	11.00	11.00	14.00
	47	6185	11.00	11.00	14.00
	79	6345	11.00	11.00	14.00
	111	6505	11.00	11.00	14.00
	143	6665	11.00	11.00	14.00
	175	6825	11.00	11.00	14.00
	207	6985	11.00	11.00	14.00
802.11be EHT320	31	6105	11.00	11.00	14.00
	63	6265	11.00	11.00	14.00
	95	6425	11.00	11.00	14.00
	127	6585	11.00	11.00	14.00
	159	6745	11.00	11.00	14.00
191	6905	11.00	11.00	14.00	

Tune-up Power (Full)_HBS Mode			
Bluetooth			
Mode	Channel	Frequency	Ant 0+1 Max Tune-up
BR / EDR	0	2402	16
	39	2441	16
	78	2480	16
LE	0	2402	16
	19	2440	16
	39	2480	16



Tune-up Power (Full)_HBS Mode			
Bluetooth			
Mode	Channel	Frequency	Ant 0 Max Tune-up
BR / EDR	0	2402	13
	39	2441	13
	78	2480	13
LE	0	2402	13
	19	2440	13
	39	2480	13

Tune-up Power (Full)_HBS Mode							
WLAN 5.2GHz							
Mode	Channel	Frequency	SISO Ant 0 Max Tune up	SISO Ant 1 Max Tune up	MIMO Ant 0 Tune up	MIMO Ant 1 Tune up	MIMO Ant 0+1 Max Tune up
802.11a	36	5180	10.0	10.0	10.0	10.0	13.0
	40	5200	10.0	10.0	10.0	10.0	13.0
	44	5220	10.0	10.0	10.0	10.0	13.0
	48	5240	10.0	10.0	10.0	10.0	13.0
802.11n HT20	36	5180	10.0	10.0	10.0	10.0	13.0
	40	5200	10.0	10.0	10.0	10.0	13.0
	44	5220	10.0	10.0	10.0	10.0	13.0
	48	5240	10.0	10.0	10.0	10.0	13.0
802.11n HT40	38	5190	10.0	10.0	10.0	10.0	13.0
	46	5230	10.0	10.0	10.0	10.0	13.0
802.11ac VHT20	36	5180	10.0	10.0	10.0	10.0	13.0
	40	5200	10.0	10.0	10.0	10.0	13.0
	44	5220	10.0	10.0	10.0	10.0	13.0
	48	5240	10.0	10.0	10.0	10.0	13.0
802.11ac VHT40	38	5190	10.0	10.0	10.0	10.0	13.0
	46	5230	10.0	10.0	10.0	10.0	13.0
802.11ac VHT80	42	5210	10.0	10.0	10.0	10.0	13.0
802.11ax HE20	36	5180	10.0	10.0	7.0	10.0	13.0
	40	5200	10.0	10.0	7.0	10.0	13.0
	44	5220	10.0	10.0	7.0	10.0	13.0
	48	5240	10.0	10.0	7.0	10.0	13.0
802.11ax HE40	38	5190	10.0	10.0	7.0	10.0	13.0
	46	5230	10.0	10.0	7.0	10.0	13.0
802.11ax HE80	42	5210	10.0	10.0	7.0	10.0	13.0
802.11be EHT20	36	5180	10.0	10.0	7.0	10.0	13.0
	40	5200	10.0	10.0	7.0	10.0	13.0
	44	5220	10.0	10.0	7.0	10.0	13.0
	48	5240	10.0	10.0	7.0	10.0	13.0
802.11be EHT40	38	5190	10.0	10.0	7.0	10.0	13.0
	46	5230	10.0	10.0	7.0	10.0	13.0
802.11be EHT80	42	5210	10.0	10.0	7.0	10.0	13.0

Tune-up Power (Full)_HBS Mode							
WLAN 5.3GHz							
Mode	Channel	Frequency	SISO Ant 0 Max Tune up	SISO Ant 1 Max Tune up	MIMO Ant 0 Tune up	MIMO Ant 1 Tune up	MIMO Ant 0+1 Max Tune up
802.11a	52	5260	10.0	10.0	10.0	10.0	13.0
	56	5280	10.0	10.0	10.0	10.0	13.0
	60	5300	10.0	10.0	10.0	10.0	13.0
	64	5320	10.0	10.0	10.0	10.0	13.0
802.11n HT20	52	5260	10.0	10.0	10.0	10.0	13.0
	56	5280	10.0	10.0	10.0	10.0	13.0
	60	5300	10.0	10.0	10.0	10.0	13.0
	64	5320	10.0	10.0	10.0	10.0	13.0
802.11n HT40	54	5270	10.0	10.0	10.0	10.0	13.0
	62	5310	10.0	10.0	10.0	10.0	13.0
802.11ac VHT20	52	5260	10.0	10.0	10.0	10.0	13.0
	56	5280	10.0	10.0	10.0	10.0	13.0
	60	5300	10.0	10.0	10.0	10.0	13.0
	64	5320	10.0	10.0	10.0	10.0	13.0
802.11ac VHT40	54	5270	10.0	10.0	10.0	10.0	13.0
	62	5310	10.0	10.0	10.0	10.0	13.0
802.11ac VHT80	58	5290	10.0	10.0	10.0	10.0	13.0
802.11ac VHT160	50	5250	10.0	10.0	10.0	10.0	13.0
802.11ax HE20	52	5260	10.0	10.0	10.0	10.0	13.0
	56	5280	10.0	10.0	10.0	10.0	13.0
	60	5300	10.0	10.0	10.0	10.0	13.0
	64	5320	10.0	10.0	10.0	10.0	13.0
802.11ax HE40	54	5270	10.0	10.0	10.0	10.0	13.0
	62	5310	10.0	10.0	10.0	10.0	13.0
802.11ax HE80	58	5290	10.0	10.0	10.0	10.0	13.0
802.11ax HE160	50	5250	10.0	10.0	10.0	10.0	13.0
802.11be EHT20	52	5260	10.0	10.0	10.0	10.0	13.0
	56	5280	10.0	10.0	10.0	10.0	13.0
	60	5300	10.0	10.0	10.0	10.0	13.0
	64	5320	10.0	10.0	10.0	10.0	13.0
802.11be EHT40	54	5270	10.0	10.0	10.0	10.0	13.0
	62	5310	10.0	10.0	10.0	10.0	13.0
802.11be EHT80	58	5290	10.0	10.0	10.0	10.0	13.0
802.11be EH160	50	5250	10.0	10.0	10.0	10.0	13.0

Tune-up Power (Full)_SP HBS Mode							
WLAN6G							
Mode	Channel	Frequency	SISO Ant 0 Max Tune up	SISO Ant 1 Max Tune up	MIMO Ant 0 Tune up	MIMO Ant 1 Tune up	MIMO Ant 0+1 Max Tune up
802.11a	1	5955	11.5	11.5	11.5	11.5	14.5
	5	5975	11.5	11.5	11.5	11.5	14.5
	9	5995	11.5	11.5	11.5	11.5	14.5
	13	6015	11.5	11.5	11.5	11.5	14.5
	17	6035	11.5	11.5	11.5	11.5	14.5
	21	6055	11.5	11.5	11.5	11.5	14.5
	25	6075	11.5	11.5	11.5	11.5	14.5
	29	6095	11.5	11.5	11.5	11.5	14.5
	33	6115	11.5	11.5	11.5	11.5	14.5
	37	6135	11.5	11.5	11.5	11.5	14.5
	41	6155	11.5	11.5	11.5	11.5	14.5
	45	6175	11.5	11.5	11.5	11.5	14.5
	49	6195	11.5	11.5	11.5	11.5	14.5
	53	6215	11.5	11.5	11.5	11.5	14.5
	57	6235	11.5	11.5	11.5	11.5	14.5
	61	6255	11.5	11.5	11.5	11.5	14.5
	65	6275	11.5	11.5	11.5	11.5	14.5
	69	6295	11.5	11.5	11.5	11.5	14.5
	73	6315	11.5	11.5	11.5	11.5	14.5
	77	6335	11.5	11.5	11.5	11.5	14.5
	81	6355	11.5	11.5	11.5	11.5	14.5
	85	6375	11.5	11.5	11.5	11.5	14.5
	89	6395	11.5	11.5	11.5	11.5	14.5
	93	6415	11.5	11.5	11.5	11.5	14.5
	117	6535	11.5	11.5	11.5	11.5	14.5
	121	6555	11.5	11.5	11.5	11.5	14.5
	125	6575	11.5	11.5	11.5	11.5	14.5
	129	6595	11.5	11.5	11.5	11.5	14.5
	133	6615	11.5	11.5	11.5	11.5	14.5
	137	6635	11.5	11.5	11.5	11.5	14.5
	141	6655	11.5	11.5	11.5	11.5	14.5
	145	6675	11.5	11.5	11.5	11.5	14.5
	149	6695	11.5	11.5	11.5	11.5	14.5
153	6715	11.5	11.5	11.5	11.5	14.5	
157	6735	11.5	11.5	11.5	11.5	14.5	
161	6755	11.5	11.5	11.5	11.5	14.5	
165	6775	11.5	11.5	11.5	11.5	14.5	
169	6795	11.5	11.5	11.5	11.5	14.5	
173	6815	11.5	11.5	11.5	11.5	14.5	
177	6835	11.5	11.5	11.5	11.5	14.5	
181	6855	11.5	11.5	11.5	11.5	14.5	

Tune-up Power (Full)_SP HBS Mode							
WLAN6G							
Mode	Channel	Frequency	SISO Ant 0 Max Tune up	SISO Ant 1 Max Tune up	MIMO Ant 0 Tune up	MIMO Ant 1 Tune up	MIMO Ant 0+1 Max Tune up
802.11ax HE20	1	5955	11.5	11.5	11.5	11.5	14.5
	5	5975	11.5	11.5	11.5	11.5	14.5
	9	5995	11.5	11.5	11.5	11.5	14.5
	13	6015	11.5	11.5	11.5	11.5	14.5
	17	6035	11.5	11.5	11.5	11.5	14.5
	21	6055	11.5	11.5	11.5	11.5	14.5
	25	6075	11.5	11.5	11.5	11.5	14.5
	29	6095	11.5	11.5	11.5	11.5	14.5
	33	6115	11.5	11.5	11.5	11.5	14.5
	37	6135	11.5	11.5	11.5	11.5	14.5
	41	6155	11.5	11.5	11.5	11.5	14.5
	45	6175	11.5	11.5	11.5	11.5	14.5
	49	6195	11.5	11.5	11.5	11.5	14.5
	53	6215	11.5	11.5	11.5	11.5	14.5
	57	6235	11.5	11.5	11.5	11.5	14.5
	61	6255	11.5	11.5	11.5	11.5	14.5
	65	6275	11.5	11.5	11.5	11.5	14.5
	69	6295	11.5	11.5	11.5	11.5	14.5
	73	6315	11.5	11.5	11.5	11.5	14.5
	77	6335	11.5	11.5	11.5	11.5	14.5
	81	6355	11.5	11.5	11.5	11.5	14.5
	85	6375	11.5	11.5	11.5	11.5	14.5
	89	6395	11.5	11.5	11.5	11.5	14.5
	93	6415	11.5	11.5	11.5	11.5	14.5
	117	6535	11.5	11.5	11.5	11.5	14.5
	121	6555	11.5	11.5	11.5	11.5	14.5
	125	6575	11.5	11.5	11.5	11.5	14.5
	129	6595	11.5	11.5	11.5	11.5	14.5
	133	6615	11.5	11.5	11.5	11.5	14.5
	137	6635	11.5	11.5	11.5	11.5	14.5
	141	6655	11.5	11.5	11.5	11.5	14.5
	145	6675	11.5	11.5	11.5	11.5	14.5
	149	6695	11.5	11.5	11.5	11.5	14.5
153	6715	11.5	11.5	11.5	11.5	14.5	
157	6735	11.5	11.5	11.5	11.5	14.5	
161	6755	11.5	11.5	11.5	11.5	14.5	
165	6775	11.5	11.5	11.5	11.5	14.5	
169	6795	11.5	11.5	11.5	11.5	14.5	
173	6815	11.5	11.5	11.5	11.5	14.5	
177	6835	11.5	11.5	11.5	11.5	14.5	
181	6855	11.5	11.5	11.5	11.5	14.5	

Tune-up Power (Full)_SP HBS Mode							
WLAN6G							
Mode	Channel	Frequency	SISO Ant 0 Max Tune up	SISO Ant 1 Max Tune up	MIMO Ant 0 Tune up	MIMO Ant 1 Tune up	MIMO Ant 0+1 Max Tune up
802.11ax HE40	3	5965	11.5	11.5	11.5	11.5	14.5
	11	6005	11.5	11.5	11.5	11.5	14.5
	19	6045	11.5	11.5	11.5	11.5	14.5
	27	6085	11.5	11.5	11.5	11.5	14.5
	35	6125	11.5	11.5	11.5	11.5	14.5
	43	6165	11.5	11.5	11.5	11.5	14.5
	51	6205	11.5	11.5	11.5	11.5	14.5
	59	6245	11.5	11.5	11.5	11.5	14.5
	67	6285	11.5	11.5	11.5	11.5	14.5
	75	6325	11.5	11.5	11.5	11.5	14.5
	83	6365	11.5	11.5	11.5	11.5	14.5
	91	6405	11.5	11.5	11.5	11.5	14.5
	123	6565	11.5	11.5	11.5	11.5	14.5
	131	6605	11.5	11.5	11.5	11.5	14.5
	139	6645	11.5	11.5	11.5	11.5	14.5
	147	6685	11.5	11.5	11.5	11.5	14.5
	155	6725	11.5	11.5	11.5	11.5	14.5
163	6765	11.5	11.5	11.5	11.5	14.5	
171	6805	11.5	11.5	11.5	11.5	14.5	
179	6845	11.5	11.5	11.5	11.5	14.5	
802.11ax HE80	7	5985	11.5	11.5	11.5	11.5	14.5
	23	6065	11.5	11.5	11.5	11.5	14.5
	39	6145	11.5	11.5	11.5	11.5	14.5
	55	6225	11.5	11.5	11.5	11.5	14.5
	71	6305	11.5	11.5	11.5	11.5	14.5
	87	6385	11.5	11.5	11.5	11.5	14.5
	135	6625	11.5	11.5	11.5	11.5	14.5
	151	6705	11.5	11.5	11.5	11.5	14.5
167	6785	11.5	11.5	11.5	11.5	14.5	
802.11ax HE160	15	6025	11.5	11.5	11.5	11.5	14.5
	47	6185	11.5	11.5	11.5	11.5	14.5
	79	6345	11.5	11.5	11.5	11.5	14.5
	143	6665	11.5	11.5	11.5	11.5	14.5

Tune-up Power (Full)_SP HBS Mode							
WLAN6G							
Mode	Channel	Frequency	SISO Ant 0 Max Tune up	SISO Ant 1 Max Tune up	MIMO Ant 0 Tune up	MIMO Ant 1 Tune up	MIMO Ant 0+1 Max Tune up
802.11be EHT20	1	5955	11.5	11.5	11.5	11.5	14.5
	5	5975	11.5	11.5	11.5	11.5	14.5
	9	5995	11.5	11.5	11.5	11.5	14.5
	13	6015	11.5	11.5	11.5	11.5	14.5
	17	6035	11.5	11.5	11.5	11.5	14.5
	21	6055	11.5	11.5	11.5	11.5	14.5
	25	6075	11.5	11.5	11.5	11.5	14.5
	29	6095	11.5	11.5	11.5	11.5	14.5
	33	6115	11.5	11.5	11.5	11.5	14.5
	37	6135	11.5	11.5	11.5	11.5	14.5
	41	6155	11.5	11.5	11.5	11.5	14.5
	45	6175	11.5	11.5	11.5	11.5	14.5
	49	6195	11.5	11.5	11.5	11.5	14.5
	53	6215	11.5	11.5	11.5	11.5	14.5
	57	6235	11.5	11.5	11.5	11.5	14.5
	61	6255	11.5	11.5	11.5	11.5	14.5
	65	6275	11.5	11.5	11.5	11.5	14.5
	69	6295	11.5	11.5	11.5	11.5	14.5
	73	6315	11.5	11.5	11.5	11.5	14.5
	77	6335	11.5	11.5	11.5	11.5	14.5
	81	6355	11.5	11.5	11.5	11.5	14.5
	85	6375	11.5	11.5	11.5	11.5	14.5
	89	6395	11.5	11.5	11.5	11.5	14.5
	93	6415	11.5	11.5	11.5	11.5	14.5
	117	6535	11.5	11.5	11.5	11.5	14.5
	121	6555	11.5	11.5	11.5	11.5	14.5
	125	6575	11.5	11.5	11.5	11.5	14.5
	129	6595	11.5	11.5	11.5	11.5	14.5
	133	6615	11.5	11.5	11.5	11.5	14.5
	137	6635	11.5	11.5	11.5	11.5	14.5
	141	6655	11.5	11.5	11.5	11.5	14.5
	145	6675	11.5	11.5	11.5	11.5	14.5
	149	6695	11.5	11.5	11.5	11.5	14.5
153	6715	11.5	11.5	11.5	11.5	14.5	
157	6735	11.5	11.5	11.5	11.5	14.5	
161	6755	11.5	11.5	11.5	11.5	14.5	
165	6775	11.5	11.5	11.5	11.5	14.5	
169	6795	11.5	11.5	11.5	11.5	14.5	
173	6815	11.5	11.5	11.5	11.5	14.5	
177	6835	11.5	11.5	11.5	11.5	14.5	
181	6855	11.5	11.5	11.5	11.5	14.5	

Tune-up Power (Full)_SP HBS Mode							
WLAN6G							
Mode	Channel	Frequency	SISO Ant 0 Max Tune up	SISO Ant 1 Max Tune up	MIMO Ant 0 Tune up	MIMO Ant 1 Tune up	MIMO Ant 0+1 Max Tune up
802.11be EHT40	3	5965	11.5	11.5	11.5	11.5	14.5
	11	6005	11.5	11.5	11.5	11.5	14.5
	19	6045	11.5	11.5	11.5	11.5	14.5
	27	6085	11.5	11.5	11.5	11.5	14.5
	35	6125	11.5	11.5	11.5	11.5	14.5
	43	6165	11.5	11.5	11.5	11.5	14.5
	51	6205	11.5	11.5	11.5	11.5	14.5
	59	6245	11.5	11.5	11.5	11.5	14.5
	67	6285	11.5	11.5	11.5	11.5	14.5
	75	6325	11.5	11.5	11.5	11.5	14.5
	83	6365	11.5	11.5	11.5	11.5	14.5
	91	6405	11.5	11.5	11.5	11.5	14.5
	123	6565	11.5	11.5	11.5	11.5	14.5
	131	6605	11.5	11.5	11.5	11.5	14.5
	139	6645	11.5	11.5	11.5	11.5	14.5
	147	6685	11.5	11.5	11.5	11.5	14.5
	155	6725	11.5	11.5	11.5	11.5	14.5
163	6765	11.5	11.5	11.5	11.5	14.5	
171	6805	11.5	11.5	11.5	11.5	14.5	
179	6845	11.5	11.5	11.5	11.5	14.5	
802.11be EHT80	7	5985	11.5	11.5	11.5	11.5	14.5
	23	6065	11.5	11.5	11.5	11.5	14.5
	39	6145	11.5	11.5	11.5	11.5	14.5
	55	6225	11.5	11.5	11.5	11.5	14.5
	71	6305	11.5	11.5	11.5	11.5	14.5
	87	6385	11.5	11.5	11.5	11.5	14.5
	135	6625	11.5	11.5	11.5	11.5	14.5
	151	6705	11.5	11.5	11.5	11.5	14.5
167	6785	11.5	11.5	11.5	11.5	14.5	
802.11be EHT160	15	6025	11.5	11.5	11.5	11.5	14.5
	47	6185	11.5	11.5	11.5	11.5	14.5
	79	6345	11.5	11.5	11.5	11.5	14.5
	143	6665	11.5	11.5	11.5	11.5	14.5
802.11be EHT320	31	6105	11.5	11.5	11.5	11.5	14.5
	63	6265	11.5	11.5	11.5	11.5	14.5
	95	6425	11.5	11.5	11.5	11.5	14.5
	127	6585	11.5	11.5	11.5	11.5	14.5



BUREAU
VERITAS

Appendix E. Measured Conducted Power Result

The measuring conducted power (Unit: dBm) are shown as below.

Conducted Power (Full)			
WLAN2.4GHz Ant 0			
Mode	Channel	Frequency	SISO Ant 0 Avg. Power
802.11b	1	2412	13.44
	6	2437	13.42
	11	2462	13.28
	12	2467	13.38
	13	2472	12.17
802.11g	1	2412	12.76
	6	2437	12.86
	11	2462	13.05
	12	2467	12.86
	13	2472	-2.77
802.11n HT20	1	2412	13.05
	6	2437	13.01
	11	2462	13.06
	12	2467	13.16
	13	2472	-3.51
802.11n HT40	3	2422	12.96
	6	2437	13.14
	9	2452	12.75
	10	2457	13.06
	11	2462	-3.88
802.11ac VHT20	1	2412	12.78
	6	2437	13.06
	11	2462	12.84
	12	2467	12.84
	13	2472	-3.14
802.11ac VHT40	3	2422	13.07
	6	2437	12.8
	9	2452	12.71
	10	2457	12.95
	11	2462	-3.7
802.11ax HE20	1	2412	12.92
	6	2437	12.77
	11	2462	13.01
	12	2467	13.02
	13	2472	-3.33
802.11ax HE40	3	2422	12.86
	6	2437	12.86
	9	2452	13.11
	10	2457	12.98
	11	2462	-4.02
802.11be EHT20	1	2412	12.87
	6	2437	13.18
	11	2462	12.93
	12	2467	13.11
	13	2472	-4.06
802.11be EHT40	3	2422	13.1
	6	2437	13.14
	9	2452	12.74
	10	2457	12.4
	11	2462	-4.65

Conducted Power (Full)			
WLAN2.4GHz Ant 1			
Mode	Channel	Frequency	SISO Ant 1 Avg. Power
802.11b	1	2412	13.38
	6	2437	13.32
	11	2462	13.31
	12	2467	13.3
	13	2472	12.88
802.11g	1	2412	13.06
	6	2437	13.07
	11	2462	13.14
	12	2467	13.17
	13	2472	-2.49
802.11n HT20	1	2412	13.37
	6	2437	13.1
	11	2462	13.31
	12	2467	13.21
	13	2472	-2.96
802.11n HT40	3	2422	13.24
	6	2437	13.22
	9	2452	13.32
	10	2457	13.19
	11	2462	-3.6
802.11ac VHT20	1	2412	13.1
	6	2437	13.2
	11	2462	13.08
	12	2467	13.34
	13	2472	-3.16
802.11ac VHT40	3	2422	13.08
	6	2437	13.28
	9	2452	13.09
	10	2457	13.2
	11	2462	-3.49
802.11ax HE20	1	2412	13.23
	6	2437	13.19
	11	2462	13.2
	12	2467	13.02
	13	2472	-3.05
802.11ax HE40	3	2422	13.08
	6	2437	13.13
	9	2452	13.05
	10	2457	13.07
	11	2462	-3.72
802.11be EHT20	1	2412	13.13
	6	2437	13.33
	11	2462	13.06
	12	2467	13.34
	13	2472	-4.48
802.11be EHT40	3	2422	13.19
	6	2437	13.04
	9	2452	13.04
	10	2457	13.08
	11	2462	-4.85

Conducted Power (Full)			
WLAN2.4GHz Ant 0+1			
Mode	Channel	Frequency	MIMO Ant 0+1 Avg. Power
802.11b	1	2412	16.44
	6	2437	16.29
	11	2462	16.29
	12	2467	16.23
	13	2472	14.71
802.11g	1	2412	16.18
	6	2437	16.31
	11	2462	16.28
	12	2467	16.31
	13	2472	-0.72
802.11n HT20	1	2412	16.15
	6	2437	16.15
	11	2462	16.13
	12	2467	16.23
	13	2472	-0.11
802.11n HT40	3	2422	16.43
	6	2437	16.23
	9	2452	16.19
	10	2457	16.27
	11	2462	-0.61
802.11ac VHT20	1	2412	16.23
	6	2437	16.09
	11	2462	16.20
	12	2467	16.04
	13	2472	0.06
802.11ac VHT40	3	2422	16.11
	6	2437	16.31
	9	2452	16.30
	10	2457	16.13
	11	2462	-0.52
802.11ax HE20	1	2412	16.32
	6	2437	16.26
	11	2462	16.19
	12	2467	16.25
	13	2472	-0.04
802.11ax HE40	3	2422	16.21
	6	2437	16.30
	9	2452	16.29
	10	2457	16.22
	11	2462	-0.48
802.11be EHT20	1	2412	16.18
	6	2437	16.27
	11	2462	16.07
	12	2467	16.13
	13	2472	-1.25
802.11be EHT40	3	2422	16.23
	6	2437	16.27
	9	2452	16.14
	10	2457	15.01
	11	2462	-1.74



Conducted Power (Full)			
Bluetooth 1TX Diversity			
Mode	Channel	Frequency	Avg. Power
BR / EDR	0	2402	14.81
	39	2441	15.37
	78	2480	14.14
LE	0	2402	15.61
	19	2440	15.99
	39	2480	14.83

Conducted Power (Full)			
WLAN 5.3GHz Ant 0			
Mode	Channel	Frequency	SISO Ant 0 Avg. Power
802.11a	52	5260	11.4
	56	5280	11.16
	60	5300	11.3
	64	5320	11.45
802.11n HT20	52	5260	11.12
	56	5280	11.22
	60	5300	11.09
	64	5320	11.19
802.11n HT40	54	5270	11.34
	62	5310	11.23
802.11ac VHT20	52	5260	11.11
	56	5280	11.08
	60	5300	11.14
	64	5320	11.01
802.11ac VHT40	54	5270	11.34
	62	5310	11.38
802.11ac VHT80	58	5290	11.11
802.11ac VHT160	50	5250	11.46
802.11ax HE20	52	5260	11.17
	56	5280	11.38
	60	5300	11.14
	64	5320	11.3
802.11ax HE40	54	5270	11.39
	62	5310	11.29
802.11ax HE80	58	5290	11.38
802.11ax HE160	50	5250	11.05
802.11be EHT20	52	5260	11.31
	56	5280	11.34
	60	5300	11.06
	64	5320	11.15
802.11be EHT40	54	5270	11.4
	62	5310	11.04
802.11be EHT80	58	5290	11.1
802.11be EH160	50	5250	11.24

Conducted Power (Full)			
WLAN 5.3GHz Ant 1			
Mode	Channel	Frequency	SISO Ant 1 Avg. Power
802.11a	52	5260	11.07
	56	5280	11.4
	60	5300	11.05
	64	5320	11.41
802.11n HT20	52	5260	11.14
	56	5280	11.1
	60	5300	11.25
	64	5320	11.25
802.11n HT40	54	5270	11.14
	62	5310	11.2
802.11ac VHT20	52	5260	11.06
	56	5280	11.16
	60	5300	11.23
	64	5320	11.13
802.11ac VHT40	54	5270	11.38
	62	5310	11.02
802.11ac VHT80	58	5290	11.08
802.11ac VHT160	50	5250	11.45
802.11ax HE20	52	5260	11.06
	56	5280	11.4
	60	5300	11.04
	64	5320	11.06
802.11ax HE40	54	5270	11.37
	62	5310	11.12
802.11ax HE80	58	5290	11.03
802.11ax HE160	50	5250	11.39
802.11be EHT20	52	5260	11.23
	56	5280	11.4
	60	5300	11.14
	64	5320	11.06
802.11be EHT40	54	5270	11.24
	62	5310	11.13
802.11be EHT80	58	5290	11.1
802.11be EH160	50	5250	11.05

Conducted Power (Full)			
WLAN 5.3GHz Ant 0+1			
Mode	Channel	Frequency	MIMO Ant 0+1 Avg. Power
802.11a	52	5260	14.23
	56	5280	14.14
	60	5300	14.08
	64	5320	14.44
802.11n HT20	52	5260	14.33
	56	5280	14.34
	60	5300	14.3
	64	5320	14.34
802.11n HT40	54	5270	14.26
	62	5310	14.22
802.11ac VHT20	52	5260	14.29
	56	5280	14.23
	60	5300	14.22
	64	5320	14.15
802.11ac VHT40	54	5270	14.29
	62	5310	14.33
802.11ac VHT80	58	5290	14.23
802.11ac VHT160	50	5250	14.45
802.11ax HE20	52	5260	14.28
	56	5280	14.24
	60	5300	14.18
	64	5320	14.25
802.11ax HE40	54	5270	14.22
	62	5310	14.18
802.11ax HE80	58	5290	14.16
802.11ax HE160	50	5250	14.32
802.11be EHT20	52	5260	14.13
	56	5280	14.21
	60	5300	14.23
	64	5320	14.29
802.11be EHT40	54	5270	14.17
	62	5310	14.22
802.11be EHT80	58	5290	14.19
802.11be EH160	50	5250	14.34

Conducted Power (Full)			
WLAN 5.6GHz Ant 0			
Mode	Channel	Frequency	SISO Ant 0 Avg. Power
802.11a	100	5500	9.66
	116	5580	9.98
	120	5600	9.5
	124	5620	9.53
	132	5660	9.84
	140	5700	9.51
802.11n HT20	144	5720	9.55
	100	5500	9.81
	116	5580	9.77
	120	5600	9.82
	124	5620	9.71
	132	5660	9.59
802.11n HT40	140	5700	9.59
	144	5720	9.61
	102	5510	9.9
	110	5550	9.89
	118	5590	9.55
	126	5630	9.77
802.11ac VHT20	134	5670	9.9
	142	5710	9.8
	100	5500	9.62
	116	5580	9.67
	120	5600	9.5
	124	5620	9.6
802.11ac VHT40	132	5660	9.56
	140	5700	9.63
	144	5720	9.59
	102	5510	9.89
	110	5550	9.62
	118	5590	9.78
802.11ac VHT80	126	5630	9.72
	134	5670	9.76
	142	5710	9.57
	106	5530	9.92
802.11ac VHT160	122	5610	9.84
	138	5690	9.57
	114	5570	9.99
802.11ax HE20	100	5500	9.83
	116	5580	9.53
	120	5600	9.55
	124	5620	9.74
	132	5660	9.68
	140	5700	9.64
802.11ax HE40	144	5720	9.68
	102	5510	9.58
	110	5550	9.73
	118	5590	9.56
	126	5630	9.51
	134	5670	9.75
802.11ax HE80	142	5710	9.83
	106	5530	9.51
	122	5610	9.88
	138	5690	9.53
802.11ax HE160	114	5570	9.67
802.11be EHT20	100	5500	9.75
	116	5580	9.64
	120	5600	9.82
	124	5620	9.83
	132	5660	9.87
	140	5700	9.56
802.11be EHT40	144	5720	9.73
	102	5510	9.76
	110	5550	9.61
	118	5590	9.61
	126	5630	9.54
	134	5670	9.7
802.11be EHT80	142	5710	9.55
	106	5530	9.55
	122	5610	9.76
	138	5690	9.65
802.11be EHT160	114	5570	9.5

Conducted Power (Full)			
WLAN 5.6GHz Ant 1			
Mode	Channel	Frequency	SISO Ant 1 Avg. Power
802.11a	100	5500	9.68
	116	5580	9.92
	120	5600	9.85
	124	5620	9.5
	132	5660	9.87
	140	5700	9.65
	144	5720	9.9
802.11n HT20	100	5500	9.63
	116	5580	9.82
	120	5600	9.64
	124	5620	9.58
	132	5660	9.62
	140	5700	9.82
	144	5720	9.52
802.11n HT40	102	5510	9.53
	110	5550	9.61
	118	5590	9.59
	126	5630	9.68
	134	5670	9.74
	142	5710	9.71
802.11ac VHT20	100	5500	9.69
	116	5580	9.71
	120	5600	9.86
	124	5620	9.51
	132	5660	9.81
	140	5700	9.81
	144	5720	9.71
802.11ac VHT40	102	5510	9.74
	110	5550	9.87
	118	5590	9.85
	126	5630	9.63
	134	5670	9.72
802.11ac VHT80	106	5530	9.91
	122	5610	9.81
	138	5690	9.87
	142	5710	9.87
802.11ac VHT160	114	5570	9.94
802.11ax HE20	100	5500	9.6
	116	5580	9.69
	120	5600	9.51
	124	5620	9.85
	132	5660	9.86
	140	5700	9.65
	144	5720	9.64
802.11ax HE40	102	5510	9.69
	110	5550	9.66
	118	5590	9.74
	126	5630	9.72
	134	5670	9.53
802.11ax HE80	142	5710	9.69
	106	5530	9.77
	122	5610	9.69
	138	5690	9.9
802.11ax HE160	114	5570	9.68
802.11be EHT20	100	5500	9.73
	116	5580	9.52
	120	5600	9.53
	124	5620	9.77
	132	5660	9.6
	140	5700	9.59
	144	5720	9.54
802.11be EHT40	102	5510	9.66
	110	5550	9.63
	118	5590	9.8
	126	5630	9.66
	134	5670	9.65
	142	5710	9.5
802.11be EHT80	106	5530	9.71
	122	5610	9.5
	138	5690	9.6
	142	5710	9.6
802.11be EHT160	114	5570	9.84

Conducted Power (Full)			
WLAN 5.6GHz Ant 0+1			
Mode	Channel	Frequency	MIMO Ant 0+1 Avg. Power
802.11a	100	5500	12.77
	116	5580	12.96
	120	5600	12.63
	124	5620	12.57
	132	5660	12.77
	140	5700	12.66
	144	5720	12.69
802.11n HT20	100	5500	12.63
	116	5580	12.63
	120	5600	12.8
	124	5620	12.59
	132	5660	12.78
	140	5700	12.86
	144	5720	12.69
802.11n HT40	102	5510	12.81
	110	5550	12.87
	118	5590	12.71
	126	5630	12.54
	134	5670	12.81
	142	5710	12.7
802.11ac VHT20	100	5500	12.59
	116	5580	12.65
	120	5600	12.75
	124	5620	12.72
	132	5660	12.65
	140	5700	12.84
	144	5720	12.84
802.11ac VHT40	102	5510	12.84
	110	5550	12.7
	118	5590	12.62
	126	5630	12.61
	134	5670	12.77
802.11ac VHT80	106	5530	12.91
	122	5610	12.8
	138	5690	12.54
	142	5710	12.78
802.11ac VHT160	114	5570	12.98
802.11ax HE20	100	5500	12.88
	116	5580	12.7
	120	5600	12.78
	124	5620	12.63
	132	5660	12.73
	140	5700	12.66
	144	5720	12.61
802.11ax HE40	102	5510	12.55
	110	5550	12.76
	118	5590	12.65
	126	5630	12.55
	134	5670	12.75
802.11ax HE80	106	5530	12.76
	122	5610	12.65
	138	5690	12.71
	142	5710	12.77
802.11ax HE160	114	5570	12.6
802.11be EHT20	100	5500	12.75
	116	5580	12.81
	120	5600	12.68
	124	5620	12.55
	132	5660	12.54
	140	5700	12.68
	144	5720	12.74
802.11be EHT40	102	5510	12.73
	110	5550	12.62
	118	5590	12.82
	126	5630	12.74
	134	5670	12.75
802.11be EHT80	106	5530	12.67
	122	5610	12.76
	138	5690	12.78
	142	5710	12.74
802.11be EHT160	114	5570	12.65

Conducted Power (Full)			
WLAN 5.8GHz Ant 0			
Mode	Channel	Frequency	SISO Ant 0 Avg. Power
802.11a	149	5745	9.81
	153	5765	9.68
	157	5785	9.85
	161	5805	9.74
	165	5825	9.88
802.11n HT20	149	5745	9.76
	153	5765	9.68
	157	5785	9.82
	161	5805	9.86
	165	5825	9.66
802.11n HT40	151	5755	9.79
	159	5795	9.59
802.11ac VHT20	149	5745	9.68
	153	5765	9.89
	157	5785	9.59
	161	5805	9.87
802.11ac VHT40	165	5825	9.5
	151	5755	9.8
802.11ac VHT80	159	5795	9.6
	155	5775	9.95
802.11ax HE20	149	5745	9.53
	153	5765	9.55
	157	5785	9.55
	161	5805	9.65
	165	5825	9.76
802.11ax HE40	151	5755	9.9
	159	5795	9.53
802.11ax HE80	155	5775	9.53
802.11be EHT20	149	5745	9.76
	153	5765	9.81
	157	5785	9.86
	161	5805	9.82
802.11be EHT40	165	5825	9.84
	151	5755	9.56
802.11be EHT80	159	5795	9.79
	155	5775	9.52

Conducted Power (Full)			
WLAN 5.8GHz Ant 1			
Mode	Channel	Frequency	SISO Ant 1 Avg. Power
802.11a	149	5745	9.61
	153	5765	9.65
	157	5785	9.52
	161	5805	9.59
	165	5825	9.92
802.11n HT20	149	5745	9.76
	153	5765	9.5
	157	5785	9.6
	161	5805	9.66
	165	5825	9.89
802.11n HT40	151	5755	9.87
	159	5795	9.9
802.11ac VHT20	149	5745	9.81
	153	5765	9.5
	157	5785	9.57
	161	5805	9.54
802.11ac VHT40	165	5825	9.84
	151	5755	9.81
802.11ac VHT80	159	5795	9.89
	155	5775	9.94
802.11ax HE20	149	5745	9.84
	153	5765	9.85
	157	5785	9.89
	161	5805	9.75
	165	5825	9.84
802.11ax HE40	151	5755	9.9
	159	5795	9.72
802.11ax HE80	155	5775	9.63
802.11be EHT20	149	5745	9.71
	153	5765	9.77
	157	5785	9.53
	161	5805	9.82
	165	5825	9.57
802.11be EHT40	151	5755	9.65
	159	5795	9.53
802.11be EHT80	155	5775	9.82

Conducted Power (Full)			
WLAN 5.8GHz Ant 0+1			
Mode	Channel	Frequency	MIMO Ant 0+1 Avg. Power
802.11a	149	5745	12.7
	153	5765	12.7
	157	5785	12.74
	161	5805	12.76
	165	5825	12.91
802.11n HT20	149	5745	12.74
	153	5765	12.68
	157	5785	12.64
	161	5805	12.79
	165	5825	12.79
802.11n HT40	151	5755	12.87
	159	5795	12.75
802.11ac VHT20	149	5745	12.76
	153	5765	12.7
	157	5785	12.76
	161	5805	12.62
802.11ac VHT40	165	5825	12.77
	151	5755	12.66
802.11ac VHT80	159	5795	12.71
	155	5775	12.93
802.11ax HE20	149	5745	12.61
	153	5765	12.77
	157	5785	12.75
	161	5805	12.64
	165	5825	12.65
802.11ax HE40	151	5755	12.64
	159	5795	12.66
802.11ax HE80	155	5775	12.66
802.11be EHT20	149	5745	12.76
	153	5765	12.66
	157	5785	12.86
	161	5805	12.71
802.11be EHT40	165	5825	12.74
	151	5755	12.81
802.11be EHT80	159	5795	12.82
	155	5775	12.7

Conducted Power (Full)			
WLAN 5.9GHz Ant 0			
Mode	Channel	Frequency	SISO Ant 0 Avg. Power
802.11a	169	5845	9.88
	173	5865	9.8
	177	5885	9.57
802.11n HT20	169	5845	9.67
	173	5865	9.7
	177	5885	9.63
802.11n HT40	167	5835	9.56
	175	5875	9.63
802.11ac VHT20	169	5845	9.74
	173	5865	9.56
	177	5885	9.53
802.11ac VHT40	167	5835	9.51
	175	5875	9.57
802.11ac VHT80	171	5855	9.66
802.11ac VHT160	163	5815	9.89
802.11ax HE20	169	5845	9.76
	173	5865	9.67
	177	5885	9.65
802.11ax HE40	167	5835	9.88
	175	5875	9.56
802.11ax HE80	171	5855	9.58
802.11ax HE160	163	5815	9.87
802.11be EHT20	169	5845	9.78
	173	5865	9.6
	177	5885	9.61
802.11be EHT40	167	5835	9.75
	175	5875	9.87
802.11be EHT80	171	5855	9.83
802.11be EHT160	163	5815	9.78

Conducted Power (Full)			
WLAN 5.9GHz Ant 1			
Mode	Channel	Frequency	SISO Ant 1 Avg. Power
802.11a	169	5845	9.62
	173	5865	9.68
	177	5885	9.68
802.11n HT20	169	5845	9.62
	173	5865	9.55
	177	5885	9.73
802.11n HT40	167	5835	9.52
	175	5875	9.74
802.11ac VHT20	169	5845	9.89
	173	5865	9.6
	177	5885	9.84
802.11ac VHT40	167	5835	9.75
	175	5875	9.62
802.11ac VHT80	171	5855	9.86
802.11ac VHT160	163	5815	9.93
802.11ax HE20	169	5845	9.68
	173	5865	9.8
	177	5885	9.67
802.11ax HE40	167	5835	9.77
	175	5875	9.7
802.11ax HE80	171	5855	9.55
802.11ax HE160	163	5815	9.86
802.11be EHT20	169	5845	9.83
	173	5865	9.71
	177	5885	9.57
802.11be EHT40	167	5835	9.64
	175	5875	9.9
802.11be EHT80	171	5855	9.78
802.11be EHT160	163	5815	9.51

Conducted Power (Full)			
WLAN 5.9GHz Ant 0+1			
Mode	Channel	Frequency	MIMO Ant 0+1 Avg. Power
802.11a	169	5845	12.69
	173	5865	12.85
	177	5885	12.7
802.11n HT20	169	5845	12.63
	173	5865	12.68
	177	5885	12.84
802.11n HT40	167	5835	12.81
	175	5875	12.68
802.11ac VHT20	169	5845	12.73
	173	5865	12.83
	177	5885	12.63
802.11ac VHT40	167	5835	12.64
	175	5875	12.7
802.11ac VHT80	171	5855	12.65
802.11ac VHT160	163	5815	12.94
802.11ax HE20	169	5845	12.75
	173	5865	12.62
	177	5885	12.73
802.11ax HE40	167	5835	12.88
	175	5875	12.76
802.11ax HE80	171	5855	12.81
802.11ax HE160	163	5815	12.85
802.11be EHT20	169	5845	12.56
	173	5865	12.76
	177	5885	12.73
802.11be EHT40	167	5835	12.66
	175	5875	12.62
802.11be EHT80	171	5855	12.73
802.11be EHT160	163	5815	12.75



Conducted Power (Full)_SP			
WLAN6G Ant 0			
Mode	Channel	Frequency	SISO Ant 0 Avg. Power
802.11be EHT320	31	6105	11.94
	63	6265	11.58
	95	6425	11.51
	127	6585	11.69



Conducted Power (Full)_SP			
WLAN6G Ant 1			
Mode	Channel	Frequency	SISO Ant 1 Avg. Power
802.11be EHT320	31	6105	11.92
	63	6265	11.79
	95	6425	11.61
	127	6585	11.82



Conducted Power (Full)_SP			
WLAN6G Ant 0+1			
Mode	Channel	Frequency	MIMO Ant 0+1 Avg. Power
802.11be EHT320	31	6105	14.99
	63	6265	14.62
	95	6425	14.89
	127	6585	14.97



Conducted Power (Full)_LPI			
WLAN6G Ant 0			
Mode	Channel	Frequency	SISO Ant 0 Avg. Power
802.11be EHT320	31	6105	10.91
	63	6265	10.98
	95	6425	10.84
	127	6585	10.81
	159	6745	10.87
	191	6905	10.79



Conducted Power (Full)_LPI			
WLAN6G Ant 1			
Mode	Channel	Frequency	SISO Ant 1 Avg. Power
802.11be EHT320	31	6105	10.76
	63	6265	10.79
	95	6425	10.71
	127	6585	10.81
	159	6745	10.88
	191	6905	10.84



Conducted Power (Full)_LPI			
WLAN6G Ant 0+1			
Mode	Channel	Frequency	MIMO Ant 0+1 Avg. Power
802.11be EHT320	31	6105	13.92
	63	6265	13.96
	95	6425	13.85
	127	6585	13.82
	159	6745	13.8
	191	6905	13.77



Conducted Power (Full)_HBS Mode			
Bluetooth Ant 0+1			
Mode	Channel	Frequency	Avg. Power
BR / EDR	0	2402	14.36
	39	2441	14.54
	78	2480	14.01
LE	0	2402	15.93
	19	2440	15.99
	39	2480	15.69



Conducted Power (Full)_HBS Mode			
Bluetooth Ant 0			
Mode	Channel	Frequency	Avg. Power
BR / EDR	0	2402	12.92
	39	2441	12.83
	78	2480	12.86
LE	0	2402	12.96
	19	2440	12.98
	39	2480	12.94

Conducted Power (Full)_HBS Mode			
WLAN 5.3GHz Ant 0			
Mode	Channel	Frequency	SISO Ant 0 Avg. Power
802.11a	52	5260	9.82
	56	5280	9.84
	60	5300	9.83
	64	5320	9.82
802.11n HT20	52	5260	9.86
	56	5280	9.77
	60	5300	9.8
	64	5320	9.86
802.11n HT40	54	5270	9.8
	62	5310	9.77
802.11ac VHT20	52	5260	9.87
	56	5280	9.85
	60	5300	9.77
	64	5320	9.87
802.11ac VHT40	54	5270	9.84
	62	5310	9.78
802.11ac VHT80	58	5290	9.85
802.11ac VHT160	50	5250	9.88
802.11ax HE20	52	5260	9.79
	56	5280	9.86
	60	5300	9.83
	64	5320	9.83
802.11ax HE40	54	5270	9.84
	62	5310	9.87
802.11ax HE80	58	5290	9.79
802.11ax HE160	50	5250	9.84
802.11be EHT20	52	5260	9.83
	56	5280	9.84
	60	5300	9.79
	64	5320	9.77
802.11be EHT40	54	5270	9.83
	62	5310	9.81
802.11be EHT80	58	5290	9.78
802.11be EH160	50	5250	9.81

Conducted Power (Full)_HBS Mode			
WLAN 5.3GHz Ant 1			
Mode	Channel	Frequency	SISO Ant 1 Avg. Power
802.11a	52	5260	9.94
	56	5280	9.88
	60	5300	9.9
	64	5320	9.91
802.11n HT20	52	5260	9.88
	56	5280	9.95
	60	5300	9.91
	64	5320	9.89
802.11n HT40	54	5270	9.9
	62	5310	9.95
802.11ac VHT20	52	5260	9.95
	56	5280	9.98
	60	5300	9.97
	64	5320	9.89
802.11ac VHT40	54	5270	9.92
	62	5310	9.92
802.11ac VHT80	58	5290	9.98
802.11ac VHT160	50	5250	9.99
802.11ax HE20	52	5260	9.91
	56	5280	9.94
	60	5300	9.88
	64	5320	9.96
802.11ax HE40	54	5270	9.93
	62	5310	9.92
802.11ax HE80	58	5290	9.93
802.11ax HE160	50	5250	9.88
802.11be EHT20	52	5260	9.97
	56	5280	9.9
	60	5300	9.94
	64	5320	9.89
802.11be EHT40	54	5270	9.94
	62	5310	9.89
802.11be EHT80	58	5290	9.95
802.11be EH160	50	5250	9.96

Conducted Power (Full)_HBS Mode			
WLAN 5.3GHz Ant 0+1			
Mode	Channel	Frequency	MIMO Ant 0+1 Avg. Power
802.11a	52	5260	12.89
	56	5280	12.87
	60	5300	12.88
	64	5320	12.88
802.11n HT20	52	5260	12.88
	56	5280	12.87
	60	5300	12.87
	64	5320	12.89
802.11n HT40	54	5270	12.86
	62	5310	12.87
802.11ac VHT20	52	5260	12.92
	56	5280	12.93
	60	5300	12.88
	64	5320	12.89
802.11ac VHT40	54	5270	12.89
	62	5310	12.86
802.11ac VHT80	58	5290	12.93
802.11ac VHT160	50	5250	12.95
802.11ax HE20	52	5260	12.86
	56	5280	12.91
	60	5300	12.87
	64	5320	12.91
802.11ax HE40	54	5270	12.9
	62	5310	12.91
802.11ax HE80	58	5290	12.87
802.11ax HE160	50	5250	12.87
802.11be EHT20	52	5260	12.91
	56	5280	12.88
	60	5300	12.88
	64	5320	12.84
802.11be EHT40	54	5270	12.9
	62	5310	12.86
802.11be EHT80	58	5290	12.88
802.11be EH160	50	5250	12.9



Conducted Power (Full)_SP HBS Mode			
WLAN6G Ant 0			
Mode	Channel	Frequency	SISO Ant 0 Avg. Power
802.11be EHT320	31	6105	11.49
	63	6265	11.48
	95	6425	11.42
	127	6585	11.41



Conducted Power (Full)_SP HBS Mode			
WLAN6G Ant 1			
Mode	Channel	Frequency	SISO Ant 1 Avg. Power
802.11be EHT320	31	6105	11.46
	63	6265	11.38
	95	6425	11.42
	127	6585	11.39



Conducted Power (Full)_SP HBS Mode			
WLAN6G Ant 0+1			
Mode	Channel	Frequency	MIMO Ant 0+1 Avg. Power
802.11be EHT320	31	6105	14.48
	63	6265	14.45
	95	6425	14.43
	127	6585	14.41

Appendix F. SAR and APD / Incident Power Density Test Result

SAR Results for Body Exposure Condition.

Note:

1. SAR testing for WLAN / BT was performed on the maximum power mode.
2. Per KDB 388624 APPENDIX OVER6G, the minimum of 5 channels to perform IPD across U-NII 5,6,7 and 8. and measured results were scaled by factor 1.545 to reported power density when measurement uncertainty exceed 30%.

SAR Test Result

System & Position						DUT Configuration	SAR							
Plot No.	Band	Mode	Test Position	Separation Distance (mm)	Channel	Ant Status	Duty Cycle	Crest Factor	Max. Tune-up Power (dBm)	Measured Conducted Power (dBm)	Scaling Factor	Power Drift (dB)	SAR-1g (W/kg)	Scaled SAR-1g (W/kg)
1	WLAN2.4G	802.11b	Front Face	5	1	Ant 0	100.00	1.00	13.50	13.44	1.01	0.03	0.732	0.74
	WLAN2.4G	802.11b	Rear Face	5	1	Ant 0	100.00	1.00	13.50	13.44	1.01	0.08	0.616	0.62
	WLAN2.4G	802.11b	Left Side	5	1	Ant 0	100.00	1.00	13.50	13.44	1.01	0.04	0.063	0.06
	WLAN2.4G	802.11b	Right Side	5	1	Ant 0	100.00	1.00	13.50	13.44	1.01	0.01	0.085	0.09
	WLAN2.4G	802.11b	Top Side	5	1	Ant 0	100.00	1.00	13.50	13.44	1.01	-0.02	0.046	0.05
	WLAN2.4G	802.11b	Bottom Side	5	1	Ant 0	100.00	1.00	13.50	13.44	1.01	0.03	0.029	0.03
	WLAN2.4G	802.11b	Front Face	5	1	Ant 1	100.00	1.00	13.50	13.38	1.03	-0.08	0.663	0.68
	WLAN2.4G	802.11b	Rear Face	5	1	Ant 1	100.00	1.00	13.50	13.38	1.03	0.11	0.54	0.56
	WLAN2.4G	802.11b	Left Side	5	1	Ant 1	100.00	1.00	13.50	13.38	1.03	0.06	0.037	0.04
	WLAN2.4G	802.11b	Right Side	5	1	Ant 1	100.00	1.00	13.50	13.38	1.03	0.04	0.076	0.08
	WLAN2.4G	802.11b	Top Side	5	1	Ant 1	100.00	1.00	13.50	13.38	1.03	0.07	0.065	0.07
	WLAN2.4G	802.11b	Bottom Side	5	1	Ant 1	100.00	1.00	13.50	13.38	1.03	0.06	0.034	0.04
	WLAN2.4G	802.11b	Front Face	5	1	Ant 0+1	100.00	1.00	16.50	16.44	1.01	0.01	0.729	0.74
	WLAN2.4G	802.11b	Rear Face	5	1	Ant 0+1	100.00	1.00	16.50	16.44	1.01	0.01	0.61	0.62
	WLAN2.4G	802.11b	Left Side	5	1	Ant 0+1	100.00	1.00	16.50	16.44	1.01	-0.02	0.068	0.07
	WLAN2.4G	802.11b	Right Side	5	1	Ant 0+1	100.00	1.00	16.50	16.44	1.01	0.03	0.102	0.10
	WLAN2.4G	802.11b	Top Side	5	1	Ant 0+1	100.00	1.00	16.50	16.44	1.01	0.08	0.053	0.05
	WLAN2.4G	802.11b	Bottom Side	5	1	Ant 0+1	100.00	1.00	16.50	16.44	1.01	0.06	0.029	0.03
	WLAN2.4G	802.11b	Front Face	5	6	Ant 0	100.00	1.00	13.50	13.42	1.02	-0.14	0.627	0.64
	WLAN2.4G	802.11b	Front Face	5	11	Ant 0	100.00	1.00	13.50	13.28	1.05	0.12	0.619	0.65
	WLAN2.4G	802.11b	Front Face	5	12	Ant 0	100.00	1.00	13.50	13.38	1.03	0.06	0.453	0.47
	WLAN2.4G	802.11b	Front Face	5	13	Ant 0	100.00	1.00	13.00	12.17	1.21	0.08	0.104	0.13

SAR Test Result

System & Position						DUT Configuration	SAR							
Plot No.	Band	Mode	Test Position	Separation Distance (mm)	Channel	Ant Status	Duty Cycle	Crest Factor	Max. Tune-up Power (dBm)	Measured Conducted Power (dBm)	Scaling Factor	Power Drift (dB)	SAR-1g (W/kg)	Scaled SAR-1g (W/kg)
2	WLAN5.3G	802.11ac VHT160	Front Face	5	50	Ant 0	100.00	1.00	11.50	11.46	1.01	0.05	0.695	0.70
	WLAN5.3G	802.11ac VHT160	Rear Face	5	50	Ant 0	100.00	1.00	11.50	11.46	1.01	0.14	0.352	0.36
	WLAN5.3G	802.11ac VHT160	Left Side	5	50	Ant 0	100.00	1.00	11.50	11.46	1.01	0.05	0.058	0.06
	WLAN5.3G	802.11ac VHT160	Right Side	5	50	Ant 0	100.00	1.00	11.50	11.46	1.01	0.06	0.099	0.10
	WLAN5.3G	802.11ac VHT160	Top Side	5	50	Ant 0	100.00	1.00	11.50	11.46	1.01	-0.08	0.06	0.06
	WLAN5.3G	802.11ac VHT160	Bottom Side	5	50	Ant 0	100.00	1.00	11.50	11.46	1.01	0.03	0.046	0.05
	WLAN5.3G	802.11ac VHT160	Front Face	5	50	Ant 1	100.00	1.00	11.50	11.45	1.01	0.05	0.669	0.68
	WLAN5.3G	802.11ac VHT160	Rear Face	5	50	Ant 1	100.00	1.00	11.50	11.45	1.01	0.07	0.362	0.37
	WLAN5.3G	802.11ac VHT160	Left Side	5	50	Ant 1	100.00	1.00	11.50	11.45	1.01	-0.05	0.034	0.03
	WLAN5.3G	802.11ac VHT160	Right Side	5	50	Ant 1	100.00	1.00	11.50	11.45	1.01	0.06	0.136	0.14
	WLAN5.3G	802.11ac VHT160	Top Side	5	50	Ant 1	100.00	1.00	11.50	11.45	1.01	-0.16	0.073	0.07
	WLAN5.3G	802.11ac VHT160	Bottom Side	5	50	Ant 1	100.00	1.00	11.50	11.45	1.01	0.03	0.039	0.04
	WLAN5.3G	802.11ac VHT160	Front Face	5	50	Ant 0+1	100.00	1.00	14.50	14.45	1.01	0.06	0.671	0.68
	WLAN5.3G	802.11ac VHT160	Rear Face	5	50	Ant 0+1	100.00	1.00	14.50	14.45	1.01	0.02	0.34	0.34
	WLAN5.3G	802.11ac VHT160	Left Side	5	50	Ant 0+1	100.00	1.00	14.50	14.45	1.01	-0.08	0.056	0.06
	WLAN5.3G	802.11ac VHT160	Right Side	5	50	Ant 0+1	100.00	1.00	14.50	14.45	1.01	0.09	0.095	0.10
	WLAN5.3G	802.11ac VHT160	Top Side	5	50	Ant 0+1	100.00	1.00	14.50	14.45	1.01	0.04	0.058	0.06
	WLAN5.3G	802.11ac VHT160	Bottom Side	5	50	Ant 0+1	100.00	1.00	14.50	14.45	1.01	0.06	0.044	0.04



SAR Test Result

SAR Test Result														
System & Position						DUT Configuration	SAR							
Plot No.	Band	Mode	Test Position	Separation Distance (mm)	Channel	Ant Status	Duty Cycle	Crest Factor	Max. Tune-up Power (dBm)	Measured Conducted Power (dBm)	Scaling Factor	Power Drift (dB)	SAR-1g (W/kg)	Scaled SAR-1g (W/kg)
	HBS Mode													
3	WLAN5.3G	802.11ac VHT160	Front Face	5	50	Ant 0	100.00	1.00	10.00	9.88	1.03	0.04	0.519	0.53
	WLAN5.3G	802.11ac VHT160	Rear Face	5	50	Ant 0	100.00	1.00	10.00	9.88	1.03	-0.05	0.29	0.30
	WLAN5.3G	802.11ac VHT160	Left Side	5	50	Ant 0	100.00	1.00	10.00	9.88	1.03	-0.01	0.047	0.05
	WLAN5.3G	802.11ac VHT160	Right Side	5	50	Ant 0	100.00	1.00	10.00	9.88	1.03	-0.19	0.079	0.08
	WLAN5.3G	802.11ac VHT160	Top Side	5	50	Ant 0	100.00	1.00	10.00	9.88	1.03	0.11	0.049	0.05
	WLAN5.3G	802.11ac VHT160	Bottom Side	5	50	Ant 0	100.00	1.00	10.00	9.88	1.03	0	0.037	0.04
	WLAN5.3G	802.11ac VHT160	Front Face	5	50	Ant 1	100.00	1.00	10.00	9.99	1.00	0.02	0.352	0.35
	WLAN5.3G	802.11ac VHT160	Rear Face	5	50	Ant 1	100.00	1.00	10.00	9.99	1.00	-0.1	0.189	0.19
	WLAN5.3G	802.11ac VHT160	Left Side	5	50	Ant 1	100.00	1.00	10.00	9.99	1.00	0.16	0.017	0.02
	WLAN5.3G	802.11ac VHT160	Right Side	5	50	Ant 1	100.00	1.00	10.00	9.99	1.00	-0.19	0.071	0.07
	WLAN5.3G	802.11ac VHT160	Top Side	5	50	Ant 1	100.00	1.00	10.00	9.99	1.00	-0.16	0.038	0.04
	WLAN5.3G	802.11ac VHT160	Bottom Side	5	50	Ant 1	100.00	1.00	13.00	9.99	2.00	0.17	0.02	0.04
	WLAN5.3G	802.11ac VHT160	Front Face	5	50	Ant 0+1	100.00	1.00	13.00	12.95	1.01	0.12	0.45	0.45
	WLAN5.3G	802.11ac VHT160	Rear Face	5	50	Ant 0+1	100.00	1.00	13.00	12.95	1.01	0.04	0.263	0.27
	WLAN5.3G	802.11ac VHT160	Left Side	5	50	Ant 0+1	100.00	1.00	13.00	12.95	1.01	0.07	0.043	0.04
	WLAN5.3G	802.11ac VHT160	Right Side	5	50	Ant 0+1	100.00	1.00	13.00	12.95	1.01	-0.01	0.073	0.07
	WLAN5.3G	802.11ac VHT160	Top Side	5	50	Ant 0+1	100.00	1.00	13.00	12.95	1.01	0.03	0.045	0.05
	WLAN5.3G	802.11ac VHT160	Bottom Side	5	50	Ant 0+1	100.00	1.00	13.00	12.95	1.01	0.09	0.034	0.03



SAR Test Result

System & Position						DUT Configuration	SAR							
Plot No.	Band	Mode	Test Position	Separation Distance (mm)	Channel	Ant Status	Duty Cycle	Crest Factor	Max. Tune-up Power (dBm)	Measured Conducted Power (dBm)	Scaling Factor	Power Drift (dB)	SAR-1g (W/kg)	Scaled SAR-1g (W/kg)
4	WLAN5.6G	802.11ac VHT160	Front Face	5	114	Ant 0	100.00	1.00	10.00	9.99	1.00	0.06	0.729	0.73
	WLAN5.6G	802.11ac VHT160	Rear Face	5	114	Ant 0	100.00	1.00	10.00	9.99	1.00	-0.15	0.471	0.47
	WLAN5.6G	802.11ac VHT160	Left Side	5	114	Ant 0	100.00	1.00	10.00	9.99	1.00	0.03	0.077	0.08
	WLAN5.6G	802.11ac VHT160	Right Side	5	114	Ant 0	100.00	1.00	10.00	9.99	1.00	0.18	0.128	0.13
	WLAN5.6G	802.11ac VHT160	Top Side	5	114	Ant 0	100.00	1.00	10.00	9.99	1.00	-0.14	0.079	0.08
	WLAN5.6G	802.11ac VHT160	Bottom Side	5	114	Ant 0	100.00	1.00	10.00	9.99	1.00	-0.18	0.061	0.06
	WLAN5.6G	802.11ac VHT160	Front Face	5	114	Ant 1	100.00	1.00	10.00	9.94	1.01	0.18	0.71	0.72
	WLAN5.6G	802.11ac VHT160	Rear Face	5	114	Ant 1	100.00	1.00	10.00	9.94	1.01	0.02	0.382	0.39
	WLAN5.6G	802.11ac VHT160	Left Side	5	114	Ant 1	100.00	1.00	10.00	9.94	1.01	0.06	0.036	0.04
	WLAN5.6G	802.11ac VHT160	Right Side	5	114	Ant 1	100.00	1.00	10.00	9.94	1.01	0.13	0.145	0.15
	WLAN5.6G	802.11ac VHT160	Top Side	5	114	Ant 1	100.00	1.00	10.00	9.94	1.01	-0.07	0.078	0.08
	WLAN5.6G	802.11ac VHT160	Bottom Side	5	114	Ant 1	100.00	1.00	10.00	9.94	1.01	0.04	0.042	0.04
	WLAN5.6G	802.11ac VHT160	Front Face	5	114	Ant 0+1	100.00	1.00	13.00	12.98	1.00	-0.1	0.708	0.71
	WLAN5.6G	802.11ac VHT160	Rear Face	5	114	Ant 0+1	100.00	1.00	13.00	12.98	1.00	0.09	0.359	0.36
	WLAN5.6G	802.11ac VHT160	Left Side	5	114	Ant 0+1	100.00	1.00	13.00	12.98	1.00	0.06	0.059	0.06
	WLAN5.6G	802.11ac VHT160	Right Side	5	114	Ant 0+1	100.00	1.00	13.00	12.98	1.00	-0.02	0.102	0.10
	WLAN5.6G	802.11ac VHT160	Top Side	5	114	Ant 0+1	100.00	1.00	13.00	12.98	1.00	0.03	0.061	0.06
	WLAN5.6G	802.11ac VHT160	Bottom Side	5	114	Ant 0+1	100.00	1.00	13.00	12.98	1.00	-0.11	0.046	0.05



SAR Test Result

SAR Test Result														
System & Position						DUT Configuration	SAR							
Plot No.	Band	Mode	Test Position	Separation Distance (mm)	Channel	Ant Status	Duty Cycle	Crest Factor	Max. Tune-up Power (dBm)	Measured Conducted Power (dBm)	Scaling Factor	Power Drift (dB)	SAR-1g (W/kg)	Scaled SAR-1g (W/kg)
6	WLAN5.8G	802.11ac VHT80	Front Face	5	155	Ant 0	100.00	1.00	10.00	9.95	1.01	-0.04	0.768	0.78
	WLAN5.8G	802.11ac VHT80	Rear Face	5	155	Ant 0	100.00	1.00	10.00	9.95	1.01	-0.06	0.496	0.50
	WLAN5.8G	802.11ac VHT80	Left Side	5	155	Ant 0	100.00	1.00	10.00	9.95	1.01	0.02	0.081	0.08
	WLAN5.8G	802.11ac VHT80	Right Side	5	155	Ant 0	100.00	1.00	10.00	9.95	1.01	0.03	0.135	0.14
	WLAN5.8G	802.11ac VHT80	Top Side	5	155	Ant 0	100.00	1.00	10.00	9.95	1.01	0.01	0.083	0.08
	WLAN5.8G	802.11ac VHT80	Bottom Side	5	155	Ant 0	100.00	1.00	10.00	9.95	1.01	0.09	0.064	0.06
	WLAN5.8G	802.11ac VHT80	Front Face	5	155	Ant 1	100.00	1.00	10.00	9.94	1.01	0.04	0.756	0.76
	WLAN5.8G	802.11ac VHT80	Rear Face	5	155	Ant 1	100.00	1.00	10.00	9.94	1.01	0.11	0.407	0.41
	WLAN5.8G	802.11ac VHT80	Left Side	5	155	Ant 1	100.00	1.00	10.00	9.94	1.01	-0.02	0.038	0.04
	WLAN5.8G	802.11ac VHT80	Right Side	5	155	Ant 1	100.00	1.00	10.00	9.94	1.01	0.03	0.154	0.16
	WLAN5.8G	802.11ac VHT80	Top Side	5	155	Ant 1	100.00	1.00	10.00	9.94	1.01	-0.16	0.083	0.08
	WLAN5.8G	802.11ac VHT80	Bottom Side	5	155	Ant 1	100.00	1.00	10.00	9.94	1.01	0.08	0.045	0.05
	WLAN5.8G	802.11ac VHT80	Front Face	5	155	Ant 0+1	100.00	1.00	13.00	12.93	1.02	0.07	0.748	0.76
	WLAN5.8G	802.11ac VHT80	Rear Face	5	155	Ant 0+1	100.00	1.00	13.00	12.93	1.02	0.17	0.379	0.39
	WLAN5.8G	802.11ac VHT80	Left Side	5	155	Ant 0+1	100.00	1.00	13.00	12.93	1.02	0.11	0.062	0.06
	WLAN5.8G	802.11ac VHT80	Right Side	5	155	Ant 0+1	100.00	1.00	13.00	12.93	1.02	0.08	0.106	0.11
	WLAN5.8G	802.11ac VHT80	Top Side	5	155	Ant 0+1	100.00	1.00	13.00	12.93	1.02	-0.09	0.065	0.07
	WLAN5.8G	802.11ac VHT80	Bottom Side	5	155	Ant 0+1	100.00	1.00	13.00	12.93	1.02	0.06	0.049	0.05

SAR Test Result

System & Position						DUT Configuration	SAR							
Plot No.	Band	Mode	Test Position	Separation Distance (mm)	Channel	Ant Status	Duty Cycle	Crest Factor	Max. Tune-up Power (dBm)	Measured Conducted Power (dBm)	Scaling Factor	Power Drift (dB)	SAR-1g (W/kg)	Scaled SAR-1g (W/kg)
7	WLAN5.9G	802.11ac VHT160	Front Face	5	163	Ant 0	100.00	1.00	10.00	9.89	1.03	0.01	0.77	0.79
	WLAN5.9G	802.11ac VHT160	Rear Face	5	163	Ant 0	100.00	1.00	10.00	9.89	1.03	0.09	0.497	0.51
	WLAN5.9G	802.11ac VHT160	Left Side	5	163	Ant 0	100.00	1.00	10.00	9.89	1.03	-0.08	0.081	0.08
	WLAN5.9G	802.11ac VHT160	Right Side	5	163	Ant 0	100.00	1.00	10.00	9.89	1.03	0.09	0.136	0.14
	WLAN5.9G	802.11ac VHT160	Top Side	5	163	Ant 0	100.00	1.00	10.00	9.89	1.03	0.11	0.084	0.09
	WLAN5.9G	802.11ac VHT160	Bottom Side	5	163	Ant 0	100.00	1.00	10.00	9.89	1.03	0.03	0.064	0.07
	WLAN5.9G	802.11ac VHT160	Front Face	5	163	Ant 1	100.00	1.00	10.00	9.93	1.02	-0.04	0.731	0.75
	WLAN5.9G	802.11ac VHT160	Rear Face	5	163	Ant 1	100.00	1.00	10.00	9.93	1.02	-0.01	0.394	0.40
	WLAN5.9G	802.11ac VHT160	Left Side	5	163	Ant 1	100.00	1.00	10.00	9.93	1.02	0.04	0.037	0.04
	WLAN5.9G	802.11ac VHT160	Right Side	5	163	Ant 1	100.00	1.00	10.00	9.93	1.02	0.09	0.149	0.15
	WLAN5.9G	802.11ac VHT160	Top Side	5	163	Ant 1	100.00	1.00	10.00	9.93	1.02	-0.08	0.08	0.08
	WLAN5.9G	802.11ac VHT160	Bottom Side	5	163	Ant 1	100.00	1.00	10.00	9.93	1.02	0.07	0.043	0.04
	WLAN5.9G	802.11ac VHT160	Front Face	5	163	Ant 0+1	100.00	1.00	13.00	12.94	1.01	-0.05	0.693	0.70
	WLAN5.9G	802.11ac VHT160	Rear Face	5	163	Ant 0+1	100.00	1.00	13.00	12.94	1.01	0.09	0.351	0.35
	WLAN5.9G	802.11ac VHT160	Left Side	5	163	Ant 0+1	100.00	1.00	13.00	12.94	1.01	-0.06	0.058	0.06
	WLAN5.9G	802.11ac VHT160	Right Side	5	163	Ant 0+1	100.00	1.00	13.00	12.94	1.01	0.07	0.096	0.10
	WLAN5.9G	802.11ac VHT160	Top Side	5	163	Ant 0+1	100.00	1.00	13.00	12.94	1.01	0.08	0.061	0.06
	WLAN5.9G	802.11ac VHT160	Bottom Side	5	163	Ant 0+1	100.00	1.00	13.00	12.94	1.01	0.01	0.045	0.05

SAR Test Result

SAR Test Result														
System & Position						DUT Configuration	SAR							
Plot No.	Band	Mode	Test Position	Separation Distance (mm)	Channel	Ant Status	Duty Cycle	Crest Factor	Max. Tune-up Power (dBm)	Measured Conducted Power (dBm)	Scaling Factor	Power Drift (dB)	SAR-1g (W/kg)	Scaled SAR-1g (W/kg)
	1TX Diversity													
	BT	LE	Front Face	5	19	Ant 0	62.90	1.59	16.00	15.99	1.00	0.03	0.491	0.78
	BT	LE	Rear Face	5	19	Ant 0	62.90	1.59	16.00	15.99	1.00	0.06	0.313	0.50
	BT	LE	Left Side	5	19	Ant 0	62.90	1.59	16.00	15.99	1.00	-0.08	0.042	0.07
	BT	LE	Right Side	5	19	Ant 0	62.90	1.59	16.00	15.99	1.00	-0.06	0.057	0.09
	BT	LE	Top Side	5	19	Ant 0	62.90	1.59	16.00	15.99	1.00	0.11	0.031	0.05
	BT	LE	Bottom Side	5	19	Ant 0	62.90	1.59	16.00	15.99	1.00	0.15	0.019	0.03
8	BT	LE	Front Face	5	19	Ant 1	62.90	1.59	16.00	15.99	1.00	0.05	0.497	0.79
	BT	LE	Rear Face	5	19	Ant 1	62.90	1.59	16.00	15.99	1.00	-0.08	0.309	0.49
	BT	LE	Left Side	5	19	Ant 1	62.90	1.59	16.00	15.99	1.00	0.06	0.028	0.04
	BT	LE	Right Side	5	19	Ant 1	62.90	1.59	16.00	15.99	1.00	-0.03	0.057	0.09
	BT	LE	Top Side	5	19	Ant 1	62.90	1.59	16.00	15.99	1.00	-0.02	0.049	0.08
	BT	LE	Bottom Side	5	19	Ant 1	62.90	1.59	16.00	15.99	1.00	0.04	0.026	0.04
	BT	LE	Front Face	5	0	Ant 1	62.90	1.59	16.00	15.61	1.09	-0.07	0.441	0.76
	BT	LE	Front Face	5	39	Ant 1	62.90	1.59	16.00	14.83	1.31	-0.09	0.334	0.70
	HBS Mode													
12	BT	LE	Front Face	5	19	Ant 0	62.90	1.59	13.00	12.98	1.00	0.03	0.161	0.26
	BT	LE	Rear Face	5	19	Ant 0	62.90	1.59	13.00	12.98	1.00	-0.03	0.113	0.18
	BT	LE	Left Side	5	19	Ant 0	62.90	1.59	13.00	12.98	1.00	-0.09	0.011	0.02
	BT	LE	Right Side	5	19	Ant 0	62.90	1.59	13.00	12.98	1.00	-0.13	0.023	0.04
	BT	LE	Top Side	5	19	Ant 0	62.90	1.59	13.00	12.98	1.00	-0.03	0.020	0.03
	BT	LE	Bottom Side	5	19	Ant 0	62.90	1.59	13.00	12.98	1.00	0.06	0.011	0.02
	BT	LE	Front Face	5	0	Ant 0	62.90	1.59	13.00	12.96	1.01	0.05	0.157	0.25
	BT	LE	Front Face	5	39	Ant 0	62.90	1.59	13.00	12.94	1.01	-0.01	0.149	0.24
9	BT	LE	Front Face	5	19	Ant 0+1	62.90	1.59	16.00	15.99	1.00	0.03	0.171	0.27
	BT	LE	Rear Face	5	19	Ant 0+1	62.90	1.59	16.00	15.99	1.00	0.09	0.144	0.23
	BT	LE	Left Side	5	19	Ant 0+1	62.90	1.59	16.00	15.99	1.00	-0.19	0.00991	0.02
	BT	LE	Right Side	5	19	Ant 0+1	62.90	1.59	16.00	15.99	1.00	-0.15	0.02	0.03
	BT	LE	Top Side	5	19	Ant 0+1	62.90	1.59	16.00	15.99	1.00	-0.12	0.017	0.03
	BT	LE	Bottom Side	5	19	Ant 0+1	62.90	1.59	16.00	15.99	1.00	-0.16	0.00931	0.01
	BT	LE	Front Face	5	0	Ant 0+1	62.90	1.59	16.00	15.93	1.02	0.07	0.155	0.25
	BT	LE	Front Face	5	39	Ant 0+1	62.90	1.59	16.00	15.69	1.07	-0.08	0.151	0.26



SAR and Power Density Test Result

System & Position						DUT Configuration		SAR								Power Density										
Plot No.	Band	Mode	Test Position	Separation Distance (mm)	Channel	Ant Status	Power Status	Duty Cycle	Crest Factor	Max. Tune-up Power (dBm)	Measured Conducted Power (dBm)	Scaling Factor	Power Drift (dB)	Measured SAR-1g (W/kg)	Scaled SAR-1g (W/kg)	Measured APD W/m ² (4cm ²)	Scaled APD W/m ² (4cm ²)	Grid Step [λ]	iPD [W/m ²]	Scaling Factor for Measurement Uncertainty	Averaging Area [cm ²]	Power Drift [dB]	Normal psPD [W/m ²]	Scaled Normal psPD [W/m ²]	Total psPD [W/m ²]	Scaled Total psPD [W/m ²]
	WLAN6G	802.11be EHT320	Front Face	5	63	Ant 0	LPI	100.00	1.00	11.00	10.98	1.00	0.14	0.602	0.60	3.48	3.48									
	WLAN6G	802.11be EHT320	Rear Face	5	63	Ant 0	LPI	100.00	1.00	11.00	10.98	1.00	-0.11	0.46	0.46	2.8	2.8									
	WLAN6G	802.11be EHT320	Left Side	5	63	Ant 0	LPI	100.00	1.00	11.00	10.98	1.00	-0.02	0.124	0.12	0.754	0.75									
	WLAN6G	802.11be EHT320	Right Side	5	63	Ant 0	LPI	100.00	1.00	11.00	10.98	1.00	0.08	0.112	0.11	0.681	0.68									
	WLAN6G	802.11be EHT320	Top Side	5	63	Ant 0	LPI	100.00	1.00	11.00	10.98	1.00	0.11	0.085	0.09	0.52	0.52									
	WLAN6G	802.11be EHT320	Bottom Side	5	63	Ant 0	LPI	100.00	1.00	11.00	10.98	1.00	-0.02	0.063	0.06	0.388	0.39									
	WLAN6G	802.11be EHT320	Front Face	5	159	Ant 1	LPI	100.00	1.00	11.00	10.88	1.03	-0.12	0.632	0.65	3.96	4.08	0.125	182.34	1.545	4.00	-0.15	1.94	3	2.83	4.5
	WLAN6G	802.11be EHT320	Rear Face	5	159	Ant 1	LPI	100.00	1.00	11.00	10.88	1.03	0.07	0.439	0.45	2.67	2.75									
	WLAN6G	802.11be EHT320	Left Side	5	159	Ant 1	LPI	100.00	1.00	11.00	10.88	1.03	0.09	0.133	0.14	0.815	0.84									
	WLAN6G	802.11be EHT320	Right Side	5	159	Ant 1	LPI	100.00	1.00	11.00	10.88	1.03	0.06	0.147	0.15	0.896	0.92									
	WLAN6G	802.11be EHT320	Top Side	5	159	Ant 1	LPI	100.00	1.00	11.00	10.88	1.03	0.03	0.079	0.08	0.484	0.5									
	WLAN6G	802.11be EHT320	Bottom Side	5	159	Ant 1	LPI	100.00	1.00	11.00	10.88	1.03	0.1	0.075	0.08	0.462	0.48									
	WLAN6G	802.11be EHT320	Front Face	5	63	Ant 0+1	LPI	100.00	1.00	14.00	13.96	1.01	0.11	0.641	0.65	4.01	4.05	0.125	184.94	1.545	4.00	-0.16	1.97	3.04	2.87	4.48
	WLAN6G	802.11be EHT320	Rear Face	5	63	Ant 0+1	LPI	100.00	1.00	14.00	13.96	1.01	-0.13	0.456	0.46	2.77	2.8									
	WLAN6G	802.11be EHT320	Left Side	5	63	Ant 0+1	LPI	100.00	1.00	14.00	13.96	1.01	0.06	0.135	0.14	0.825	0.83									
	WLAN6G	802.11be EHT320	Right Side	5	63	Ant 0+1	LPI	100.00	1.00	14.00	13.96	1.01	-0.01	0.142	0.14	0.865	0.87									
	WLAN6G	802.11be EHT320	Top Side	5	63	Ant 0+1	LPI	100.00	1.00	14.00	13.96	1.01	0.18	0.085	0.09	0.52	0.53									
	WLAN6G	802.11be EHT320	Bottom Side	5	63	Ant 0+1	LPI	100.00	1.00	14.00	13.96	1.01	0.03	0.076	0.08	0.464	0.47									
	WLAN6G	802.11be EHT320	Front Face	5	31	Ant 1	LPI	100.00	1.00	11.00	10.76	1.06	0.01	0.472	0.50	3.08	3.26									
	WLAN6G	802.11be EHT320	Front Face	5	63	Ant 1	LPI	100.00	1.00	11.00	10.79	1.05	0.09	0.436	0.46	2.86	3									
	WLAN6G	802.11be EHT320	Front Face	5	95	Ant 1	LPI	100.00	1.00	11.00	10.71	1.07	-0.18	0.453	0.48	2.97	3.18									
	WLAN6G	802.11be EHT320	Front Face	5	127	Ant 1	LPI	100.00	1.00	11.00	10.81	1.04	0.04	0.436	0.45	2.86	2.97									
	WLAN6G	802.11be EHT320	Front Face	5	191	Ant 1	LPI	100.00	1.00	11.00	10.84	1.04	0.05	0.449	0.47	2.95	3.07									
10	WLAN6G	802.11be EHT320	Front Face	5	31	Ant 0	SP	100.00	1.00	12.00	11.94	1.01	0.09	0.737	0.74	4.84	4.89	0.125	211.00	1.545	4.00	-0.08	2.23	3.45	3.21	5.01
	WLAN6G	802.11be EHT320	Rear Face	5	31	Ant 0	SP	100.00	1.00	12.00	11.94	1.01	0.02	0.636	0.64	3.88	3.92	0.125	182.08	1.545	4.00	-0.14	1.92	2.97	2.77	4.32
	WLAN6G	802.11be EHT320	Left Side	5	31	Ant 0	SP	100.00	1.00	12.00	11.94	1.01	0.08	0.125	0.13	0.823	0.83									
	WLAN6G	802.11be EHT320	Right Side	5	31	Ant 0	SP	100.00	1.00	12.00	11.94	1.01	0.15	0.132	0.13	0.871	0.88									
	WLAN6G	802.11be EHT320	Top Side	5	31	Ant 0	SP	100.00	1.00	12.00	11.94	1.01	-0.05	0.09	0.09	0.574	0.58									
	WLAN6G	802.11be EHT320	Bottom Side	5	31	Ant 0	SP	100.00	1.00	12.00	11.94	1.01	-0.13	0.063	0.06	0.413	0.42									
	WLAN6G	802.11be EHT320	Front Face	5	31	Ant 1	SP	100.00	1.00	12.00	11.92	1.02	-0.09	0.715	0.73	4	4.08	0.125	204.7	1.545	4.00	0.01	2.16	3.34	3.11	4.9
	WLAN6G	802.11be EHT320	Rear Face	5	31	Ant 1	SP	100.00	1.00	12.00	11.92	1.02	0.04	0.499	0.51	2.79	2.85									
	WLAN6G	802.11be EHT320	Left Side	5	31	Ant 1	SP	100.00	1.00	12.00	11.92	1.02	-0.01	0.168	0.17	0.942	0.96	0.125	48.09	1.545	4.00	0.07	0.508	0.78	0.731	1.15
	WLAN6G	802.11be EHT320	Right Side	5	31	Ant 1	SP	100.00	1.00	12.00	11.92	1.02	0.06	0.188	0.19	1.05	1.07	0.125	53.82	1.545	4.00	-0.08	0.568	0.88	0.818	1.29
	WLAN6G	802.11be EHT320	Top Side	5	31	Ant 1	SP	100.00	1.00	12.00	11.92	1.02	-0.13	0.106	0.11	0.595	0.61	0.125	30.34	1.545	4.00	0.07	0.32	0.49	0.461	0.73
	WLAN6G	802.11be EHT320	Bottom Side	5	31	Ant 1	SP	100.00	1.00	12.00	11.92	1.02	0.12	0.089	0.09	0.502	0.51	0.125	25.48	1.545	4.00	0	0.269	0.42	0.387	0.61
	WLAN6G	802.11be EHT320	Front Face	5	31	Ant 0+1	SP	100.00	1.00	15.00	14.99	1.00	-0.04	0.704	0.70	4.08	4.08	0.125	201.55	1.545	4.00	0.12	2.13	3.29	3.06	4.73
	WLAN6G	802.11be EHT320	Rear Face	5	31	Ant 0+1	SP	100.00	1.00	15.00	14.99	1.00	-0.16	0.539	0.54	3.12	3.12									
	WLAN6G	802.11be EHT320	Left Side	5	31	Ant 0+1	SP	100.00	1.00	15.00	14.99	1.00	-0.18	0.136	0.14	0.789	0.79									
	WLAN6G	802.11be EHT320	Right Side	5	31	Ant 0+1	SP	100.00	1.00	15.00	14.99	1.00	-0.09	0.152	0.15	0.882	0.88									
	WLAN6G	802.11be EHT320	Top Side	5	31	Ant 0+1	SP	100.00	1.00	15.00	14.99	1.00	-0.13	0.09	0.09	0.524	0.52									
	WLAN6G	802.11be EHT320	Bottom Side	5	31	Ant 0+1	SP	100.00	1.00	15.00	14.99	1.00	0.15	0.072	0.07	0.417	0.42									
	WLAN6G	802.11be EHT320	Front Face	5	63	Ant 0	SP	100.00	1.00	12.00	11.58	1.10	0.16	0.582	0.64	3.37	3.71									
	WLAN6G	802.11be EHT320	Front Face	5	95	Ant 0	SP	100.00	1.00	12.00	11.51	1.12	-0.18	0.592	0.66	3.43	3.84	0.125	169.48	1.545	4.00	0.07	1.79	2.77	2.57	4.45
	WLAN6G	802.11be EHT320	Front Face	5	127	Ant 0	SP	100.00	1.00	12.00	11.69	1.07	0.04	0.536	0.57	3.1	3.32									

SAR and Power Density Test Result																										
System & Position						DUT Configuration		SAR										Power Density								
Plot No.	Band	Mode	Test Position	Separation Distance (mm)	Channel	Ant Status	Power Status	Duty Cycle	Crest Factor	Max. Tune-up Power (dBm)	Measured Conducted Power (dBm)	Scaling Factor	Power Drift (dB)	Measured SAR-1g (W/kg)	Scaled SAR-1g (W/kg)	Measured APD W/m ² (4cm ²)	Scaled APD W/m ² (4cm ²)	Grid Step [λ]	iPD [W/m ²]	Scaling Factor for Measurement Uncertainty	Averaging Area [cm ²]	Power Drift [dB]	Normal psPD [W/m ²]	Scaled Normal psPD [W/m ²]	Total psPD [W/m ²]	Scaled Total psPD [W/m ²]
HBS Mode																										
	WLAN6G	802.11be EHT320	Front Face	5	63	Ant 0	LPI	100.00	1.00	11.00	10.98	1.00	0.14	0.602	0.60	3.48	3.48	0.125	173.68	1.545	4.00	-0.14	1.85	2.86	2.7	4.17
	WLAN6G	802.11be EHT320	Rear Face	5	63	Ant 0	LPI	100.00	1.00	11.00	10.98	1.00	-0.11	0.46	0.46	2.8	2.8									
	WLAN6G	802.11be EHT320	Left Side	5	63	Ant 0	LPI	100.00	1.00	11.00	10.98	1.00	-0.02	0.124	0.12	0.754	0.75									
	WLAN6G	802.11be EHT320	Right Side	5	63	Ant 0	LPI	100.00	1.00	11.00	10.98	1.00	0.08	0.112	0.11	0.681	0.68									
	WLAN6G	802.11be EHT320	Top Side	5	63	Ant 0	LPI	100.00	1.00	11.00	10.98	1.00	0.11	0.085	0.09	0.52	0.52									
	WLAN6G	802.11be EHT320	Bottom Side	5	63	Ant 0	LPI	100.00	1.00	11.00	10.98	1.00	-0.02	0.063	0.06	0.388	0.39									
	WLAN6G	802.11be EHT320	Front Face	5	159	Ant 1	LPI	100.00	1.00	11.00	10.88	1.03	-0.12	0.632	0.65	3.96	4.08	0.125	182.34	1.545	4.00	-0.15	1.94	3	2.83	4.5
	WLAN6G	802.11be EHT320	Rear Face	5	159	Ant 1	LPI	100.00	1.00	11.00	10.88	1.03	0.07	0.439	0.45	2.67	2.75									
	WLAN6G	802.11be EHT320	Left Side	5	159	Ant 1	LPI	100.00	1.00	11.00	10.88	1.03	0.09	0.133	0.14	0.815	0.84									
	WLAN6G	802.11be EHT320	Right Side	5	159	Ant 1	LPI	100.00	1.00	11.00	10.88	1.03	0.06	0.147	0.15	0.896	0.92									
	WLAN6G	802.11be EHT320	Top Side	5	159	Ant 1	LPI	100.00	1.00	11.00	10.88	1.03	0.03	0.079	0.08	0.484	0.5									
	WLAN6G	802.11be EHT320	Bottom Side	5	159	Ant 1	LPI	100.00	1.00	11.00	10.88	1.03	0.1	0.075	0.08	0.462	0.48	0.125	21.63	1.545	4.00	0.19	0.231	0.36	0.336	0.53
	WLAN6G	802.11be EHT320	Front Face	5	63	Ant 0+1	LPI	100.00	1.00	14.00	13.96	1.01	0.11	0.641	0.65	4.01	4.05	0.125	184.94	1.545	4.00	-0.16	1.97	3.04	2.87	4.48
	WLAN6G	802.11be EHT320	Rear Face	5	63	Ant 0+1	LPI	100.00	1.00	14.00	13.96	1.01	-0.13	0.456	0.46	2.77	2.8									
	WLAN6G	802.11be EHT320	Left Side	5	63	Ant 0+1	LPI	100.00	1.00	14.00	13.96	1.01	0.06	0.135	0.14	0.825	0.83									
	WLAN6G	802.11be EHT320	Right Side	5	63	Ant 0+1	LPI	100.00	1.00	14.00	13.96	1.01	-0.01	0.142	0.14	0.865	0.87									
	WLAN6G	802.11be EHT320	Top Side	5	63	Ant 0+1	LPI	100.00	1.00	14.00	13.96	1.01	0.18	0.085	0.09	0.52	0.53									
	WLAN6G	802.11be EHT320	Bottom Side	5	63	Ant 0+1	LPI	100.00	1.00	14.00	13.96	1.01	0.03	0.076	0.08	0.464	0.47									
	WLAN6G	802.11be EHT320	Front Face	5	31	Ant 1	LPI	100.00	1.00	11.00	10.76	1.06	0.01	0.472	0.50	3.08	3.26									
	WLAN6G	802.11be EHT320	Front Face	5	63	Ant 1	LPI	100.00	1.00	11.00	10.79	1.05	0.09	0.436	0.46	2.86	3									
	WLAN6G	802.11be EHT320	Front Face	5	95	Ant 1	LPI	100.00	1.00	11.00	10.71	1.07	-0.18	0.453	0.48	2.97	3.18									
	WLAN6G	802.11be EHT320	Front Face	5	127	Ant 1	LPI	100.00	1.00	11.00	10.81	1.04	0.04	0.436	0.45	2.86	2.97									
	WLAN6G	802.11be EHT320	Front Face	5	191	Ant 1	LPI	100.00	1.00	11.00	10.84	1.04	0.05	0.449	0.47	2.95	3.07									
11	WLAN6G	802.11be EHT320	Front Face	5	31	Ant 0	SP	100.00	1.00	11.50	11.49	1.00	-0.08	0.662	0.66	4.74	4.74	0.125	191.00	1.545	4.00	-0.09	2.04	3.15	2.97	4.59
	WLAN6G	802.11be EHT320	Rear Face	5	31	Ant 0	SP	100.00	1.00	11.50	11.49	1.00	0.13	0.58	0.58	3.53	3.53	0.125	167.34	1.545	4.00	0.07	1.78	2.75	2.6	4.02
	WLAN6G	802.11be EHT320	Left Side	5	31	Ant 0	SP	100.00	1.00	11.50	11.49	1.00	-0.01	0.114	0.11	0.696	0.7									
	WLAN6G	802.11be EHT320	Right Side	5	31	Ant 0	SP	100.00	1.00	11.50	11.49	1.00	-0.13	0.12	0.12	0.735	0.74									
	WLAN6G	802.11be EHT320	Top Side	5	31	Ant 0	SP	100.00	1.00	11.50	11.49	1.00	0.02	0.082	0.08	0.502	0.5									
	WLAN6G	802.11be EHT320	Bottom Side	5	31	Ant 0	SP	100.00	1.00	11.50	11.49	1.00	-0.06	0.057	0.06	0.349	0.35									
	WLAN6G	802.11be EHT320	Front Face	5	31	Ant 1	SP	100.00	1.00	11.50	11.46	1.01	0.08	0.577	0.58	3.51	3.55									
	WLAN6G	802.11be EHT320	Rear Face	5	31	Ant 1	SP	100.00	1.00	11.50	11.46	1.01	0.14	0.403	0.41	2.45	2.47									
	WLAN6G	802.11be EHT320	Left Side	5	31	Ant 1	SP	100.00	1.00	11.50	11.46	1.01	-0.19	0.136	0.14	0.828	0.84	0.125	39.23	1.545	4.00	0	0.419	0.65	0.61	0.95
	WLAN6G	802.11be EHT320	Right Side	5	31	Ant 1	SP	100.00	1.00	11.50	11.46	1.01	0.12	0.152	0.15	0.925	0.93	0.125	43.85	1.545	4.00	-0.16	0.468	0.72	0.681	1.06
	WLAN6G	802.11be EHT320	Top Side	5	31	Ant 1	SP	100.00	1.00	11.50	11.46	1.01	-0.03	0.086	0.09	0.523	0.53	0.125	24.81	1.545	4.00	0.01	0.265	0.41	0.385	0.6
	WLAN6G	802.11be EHT320	Bottom Side	5	31	Ant 1	SP	100.00	1.00	11.50	11.46	1.01	0.02	0.072	0.07	0.441	0.45									
	WLAN6G	802.11be EHT320	Front Face	5	31	Ant 0+1	SP	100.00	1.00	14.50	14.48	1.00	0.04	0.63	0.63	3.83	3.83	0.125	181.76	1.545	4.00	0.04	1.94	3	2.82	4.36
	WLAN6G	802.11be EHT320	Rear Face	5	31	Ant 0+1	SP	100.00	1.00	14.50	14.48	1.00	0.14	0.483	0.48	2.94	2.94									
	WLAN6G	802.11be EHT320	Left Side	5	31	Ant 0+1	SP	100.00	1.00	14.50	14.48	1.00	-0.17	0.122	0.12	0.742	0.74									
	WLAN6G	802.11be EHT320	Right Side	5	31	Ant 0+1	SP	100.00	1.00	14.50	14.48	1.00	0.16	0.136	0.14	0.83	0.83									
	WLAN6G	802.11be EHT320	Top Side	5	31	Ant 0+1	SP	100.00	1.00	14.50	14.48	1.00	0.04	0.081	0.08	0.493	0.49									
	WLAN6G	802.11be EHT320	Bottom Side	5	31	Ant 0+1	SP	100.00	1.00	14.50	14.48	1.00	0.15	0.064	0.06	0.392	0.39									
	WLAN6G	802.11be EHT320	Front Face	5	63	Ant 0	SP	100.00	1.00	11.50	11.48	1.00	-0.06	0.521	0.52	3.17	3.17									
	WLAN6G	802.11be EHT320	Front Face	5	95	Ant 0	SP	100.00	1.00	11.50	11.42	1.02	0.06	0.53	0.54	3.22	3.28									
	WLAN6G	802.11be EHT320	Front Face	5	127	Ant 0	SP	100.00	1.00	11.50	11.41	1.02	-0.05	0.48	0.49	2.92	2.98									



Appendix H. Analysis of Simultaneous Transmission SAR and Total Exposure Ratio

The analysis of simultaneous transmission SAR are shown as below.

<Possibilities of Simultaneous Transmission>

The simultaneous transmission possibilities for this device are listed as below.

Simultaneous TX Combination	Capable Transmit Configurations	Exposure Condition
A	WLAN 2.4GHz + WLAN 5GHz	Yes
B	WLAN 2.4GHz + WLAN 6GHz	Yes
C	WLAN 5GHz +BT	Yes
D	WLAN 6GHz + BT	Yes
E	WLAN 5GHz (UNII-1 and UNII-2A) + WLAN 5GHz (UNII-2C, UNII-3 and UNII-4) + BT	Yes
G	WLAN 5GHz (UNII-1 and UNII-2A) + WLAN 6GHz + BT	Yes

Notes:

1. The Simultaneous TX Combination C and D are subject to Dual Band Simultaneously.
2. The Simultaneous TX Combination E and F are subject to High Band Simultaneously.
3. WLAN 2.4GHz can transmit timely shared with BT at antennas.

Simultaneous Transmission SAR Evaluation_FCC								
Position	1	6	7	8	A (1+6)	B (1+7)	C (6+8)	D (7+8)
	Max WLAN 2.4GHz	Max WLAN 5GHz	Max WLAN 6GHz	Max BT	Summing result 1g SAR W/kg	Summing result 1g SAR W/kg	Summing result 1g SAR W/kg	Summing result 1g SAR W/kg
	1g SAR W/kg	1g SAR W/kg	1g SAR W/kg	1g SAR W/kg				
Front Face	0.74	0.79	0.74	0.79	1.53	1.48	1.58	1.53
Rear Face	0.62	0.51	0.64	0.50	1.13	1.26	1.01	1.14
Left Side	0.07	0.08	0.17	0.07	0.15	0.24	0.15	0.24
Right Side	0.10	0.16	0.19	0.09	0.26	0.29	0.25	0.28
Top Side	0.07	0.09	0.11	0.08	0.16	0.18	0.17	0.19
Bottom Side	0.04	0.07	0.09	0.04	0.11	0.13	0.11	0.13

Simultaneous Transmission SAR Evaluation_FCC HBS Mode						
Position	2	3_FCC	7	8	E (2+3+8)_FCC	G (2+7+8)
	Max WLAN 5GHz (UNII-1&UNII-2A)	Max WLAN 5GHz (UNII-2C,UNII-3&UNII-4)	Max WLAN 6GHz	Max BT Ant 0	Summimg result 1g SAR W/kg	Summimg result 1g SAR W/kg
	1g SAR W/kg	1g SAR W/kg	1g SAR W/kg	1g SAR W/kg		
Front Face	0.53	0.79	0.66	0.26	1.58	1.45
Rear Face	0.30	0.51	0.58	0.23	1.04	1.11
Left Side	0.05	0.08	0.14	0.02	0.15	0.21
Right Side	0.08	0.16	0.15	0.03	0.27	0.26
Top Side	0.05	0.09	0.09	0.03	0.17	0.17
Bottom Side	0.04	0.07	0.08	0.02	0.13	0.14



Total Exposure Ratio (Body)_FCC					
Position	1	7	8	B(1+7)	D (7+8)
	Max WLAN 2.4GHz	Max WLAN 6GHz	Max BT	Total Exposure Ratio	Total Exposure Ratio
	1g SAR W/kg	4cm ² W/m ²	1g SAR W/kg		
Applicable Limit	1.6 W/kg	10 W/m ²	1.6 W/kg		
Front Face	0.74	5.01	0.79	0.96	0.99
Rear Face	0.62	4.32	0.50	0.82	0.74
Left Side	0.07	1.15	0.07	0.16	0.16
Right Side	0.10	1.29	0.09	0.19	0.19
Top Side	0.07	0.73	0.08	0.12	0.12
Bottom Side	0.04	0.61	0.04	0.09	0.09

Total Exposure Ratio (Body)_FCC HBS Mode				
Position	2	7	8	G (2+7+8)
	Max WLAN 5GHz (UNII-1&UNII-2A)	Max WLAN 6GHz	Max BT	Total Exposure Ratio
	1g SAR W/kg	4cm ² W/m ²	1g SAR W/kg	
Applicable Limit	1.6 W/kg	10 W/m ²	1.6 W/kg	
Front Face	0.53	4.59	0.26	0.95
Rear Face	0.30	4.02	0.23	0.73
Left Side	0.05	0.95	0.02	0.14
Right Side	0.08	1.06	0.03	0.17
Top Side	0.05	0.60	0.03	0.11
Bottom Side	0.04	0.53	0.02	0.09