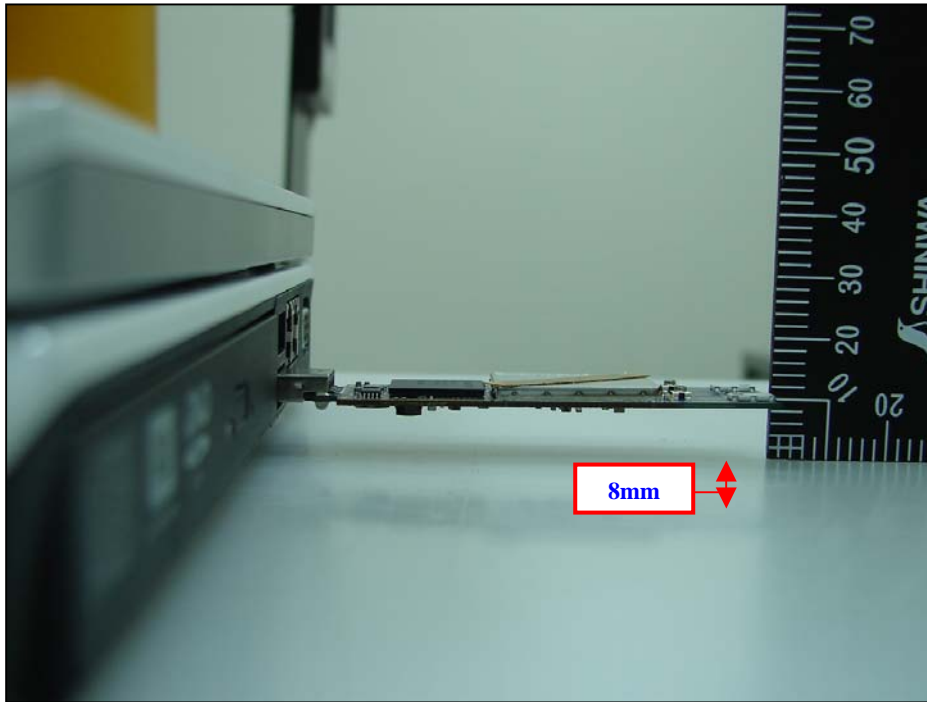


APPENDIX I TEST PHOTO

The distance between EUT and phantom:

Host 1: IBM T60m Distance is 8mm for Bottom Flat Touched
(used Horizontal/Vertical USB port)



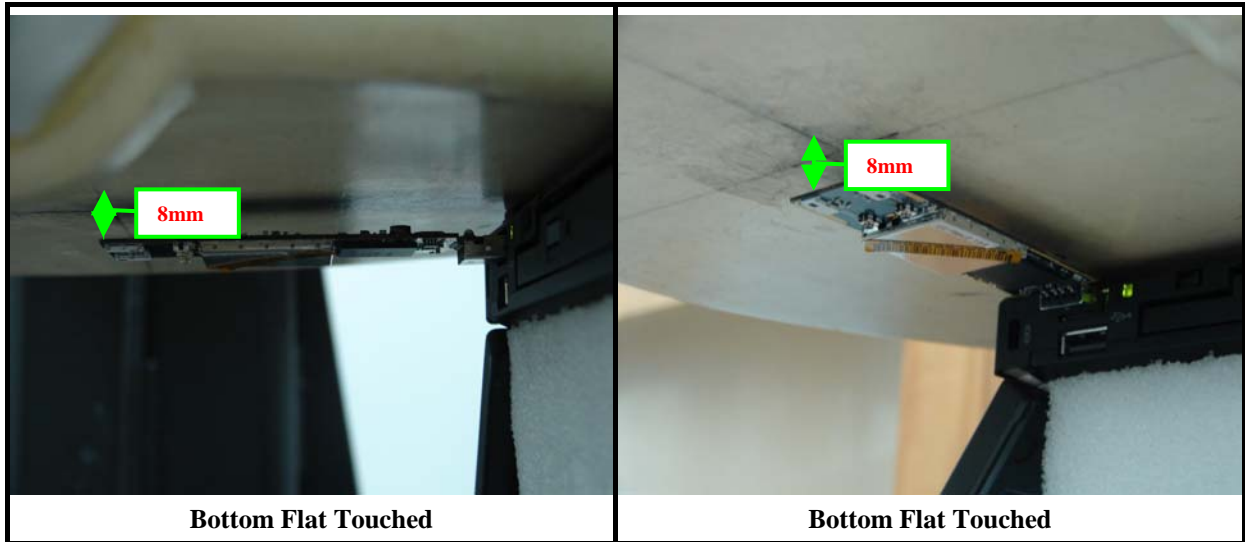
Host 2: Dell 640m Distance is 10mm for Bottom Flat Touched(used Horizontal USB port)



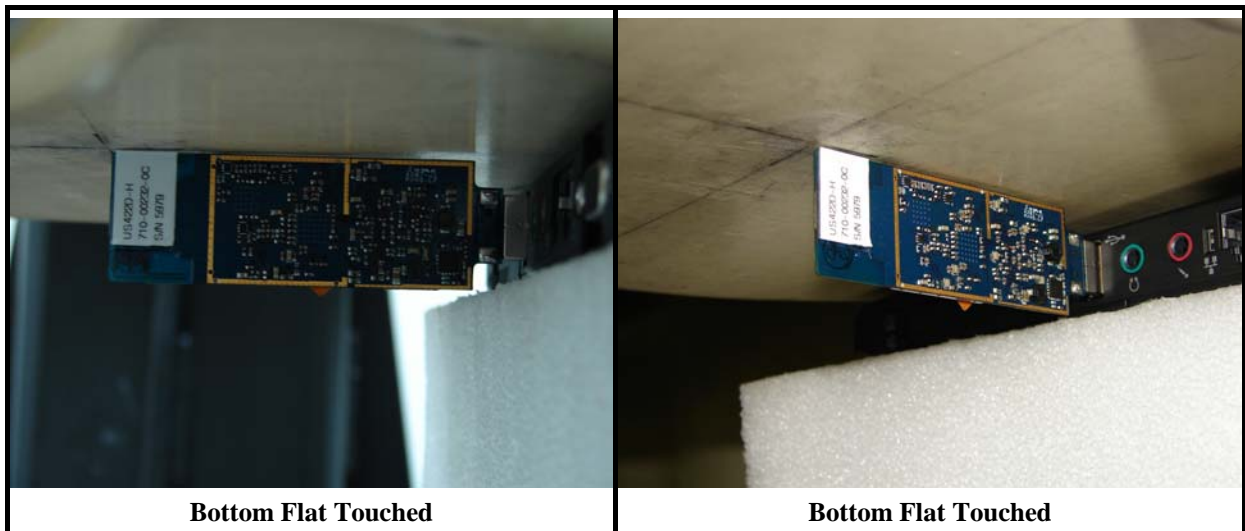
**Host 3: ASUS M5200AE Distance is 12mm for Bottom Flat Touched
(used Horizontal USB port)**



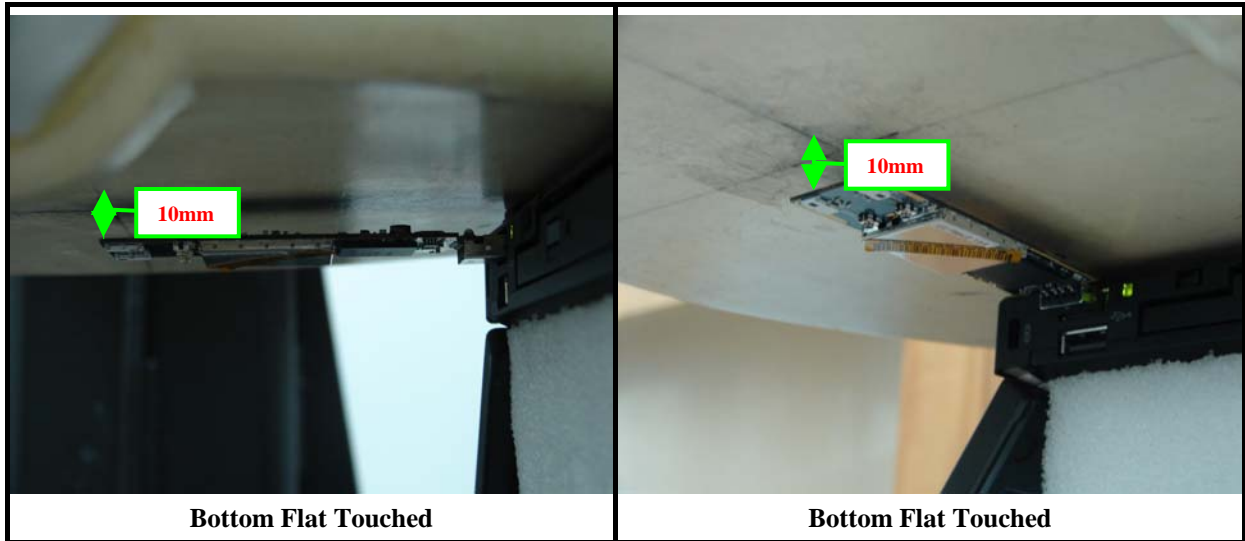
Body position Bottom Flat Touched (IBM T60 Horizontal USB port)



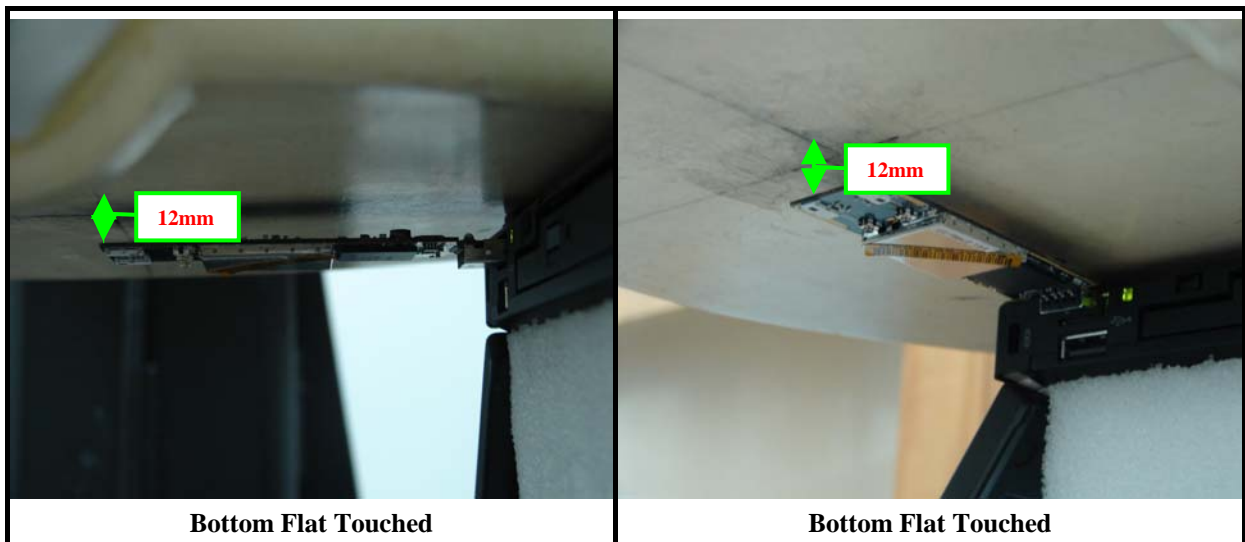
Body position Edge Touched (IBM T60 Vertical USB port)



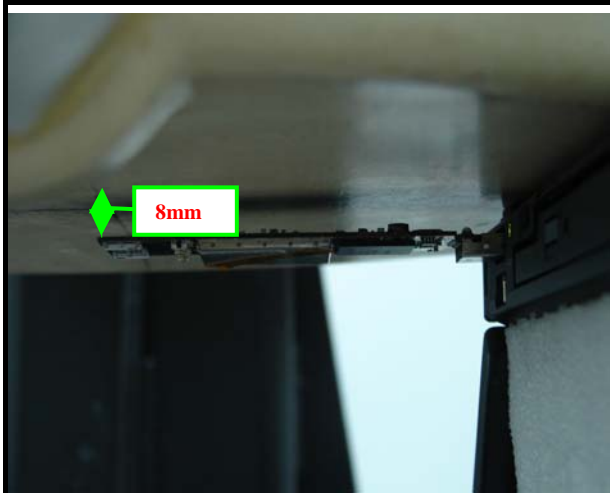
Body position Bottom Flat Touched (Dell 640m Horizontal USB port)



Body position Bottom Flat Touched (ASUS M5200AE Horizontal USB port)



Body position Bottom Flat Touched (IBM T60 Horizontal USB port)

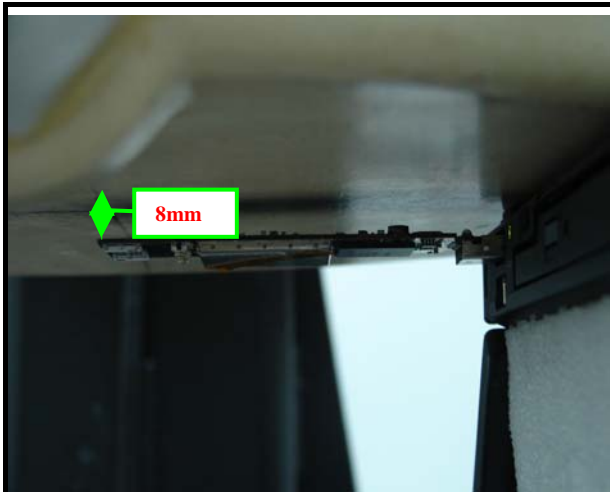


Bottom Flat Touched



Bottom Flat Touched

Body position Bottom Flat Touched (IBM T60 Horizontal USB port)

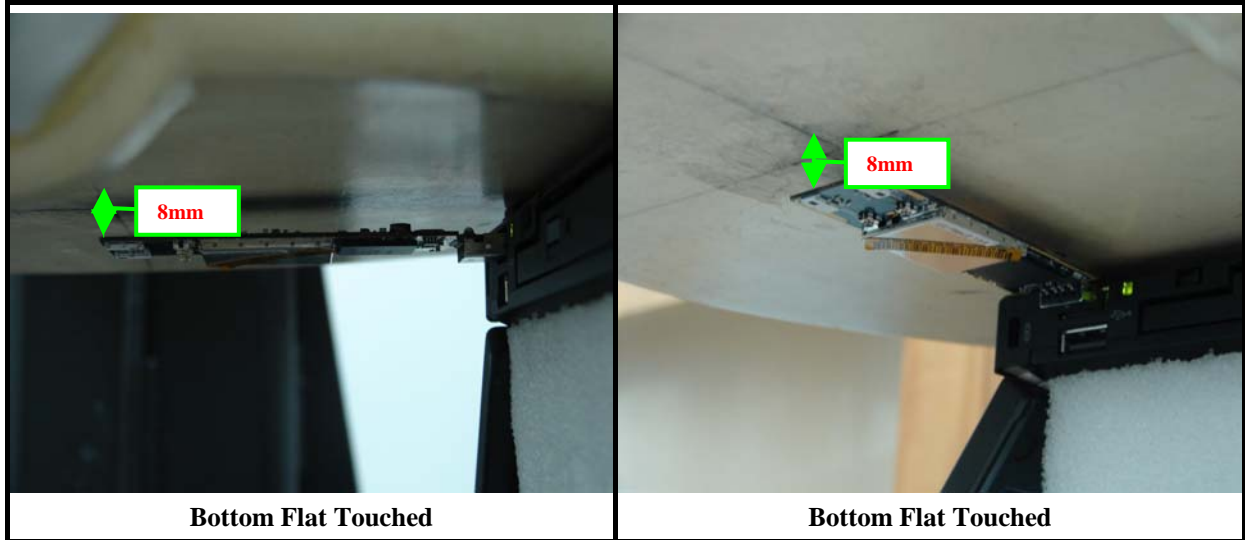


Bottom Flat Touched

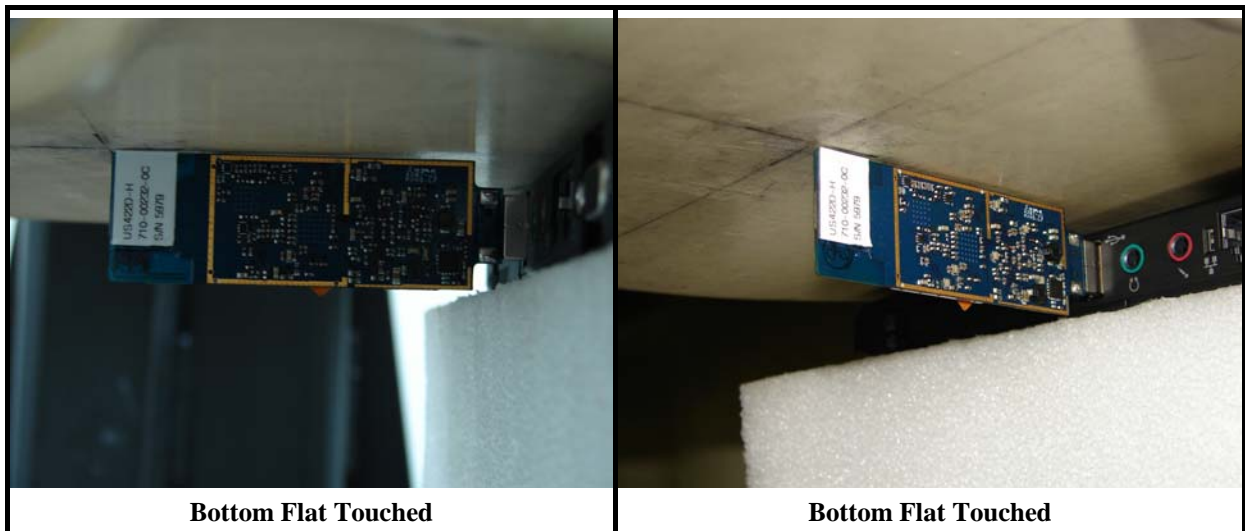


Bottom Flat Touched

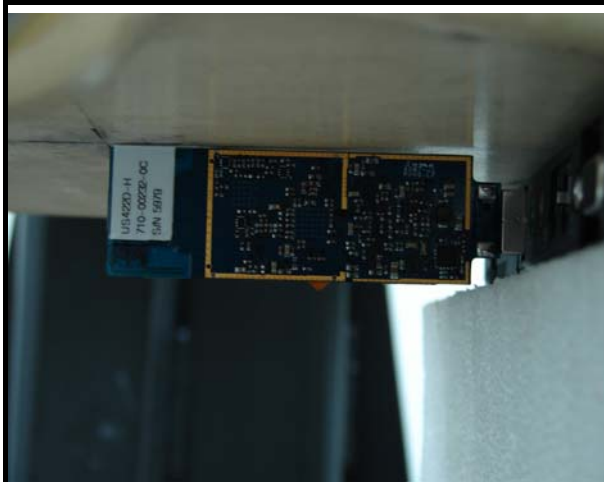
Body position Bottom Flat Touched (IBM T60 Horizontal USB port)



Body position Edge Touched (IBM T60 Vertical USB port)



Body position Edge Touched (IBM T60 Vertical USB port)

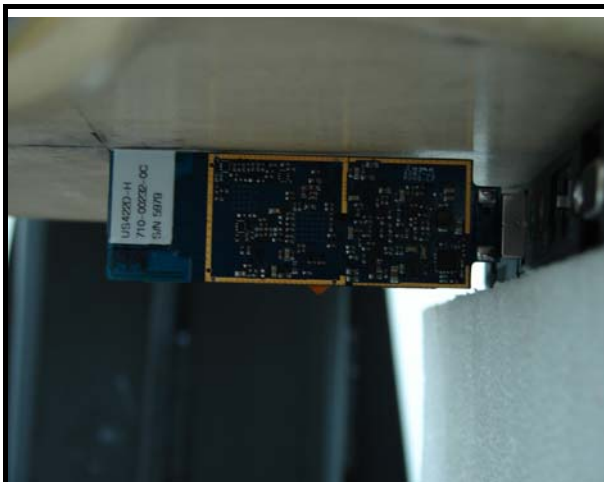


Bottom Flat Touched



Bottom Flat Touched

Body position Edge Touched (IBM T60 Vertical USB port)

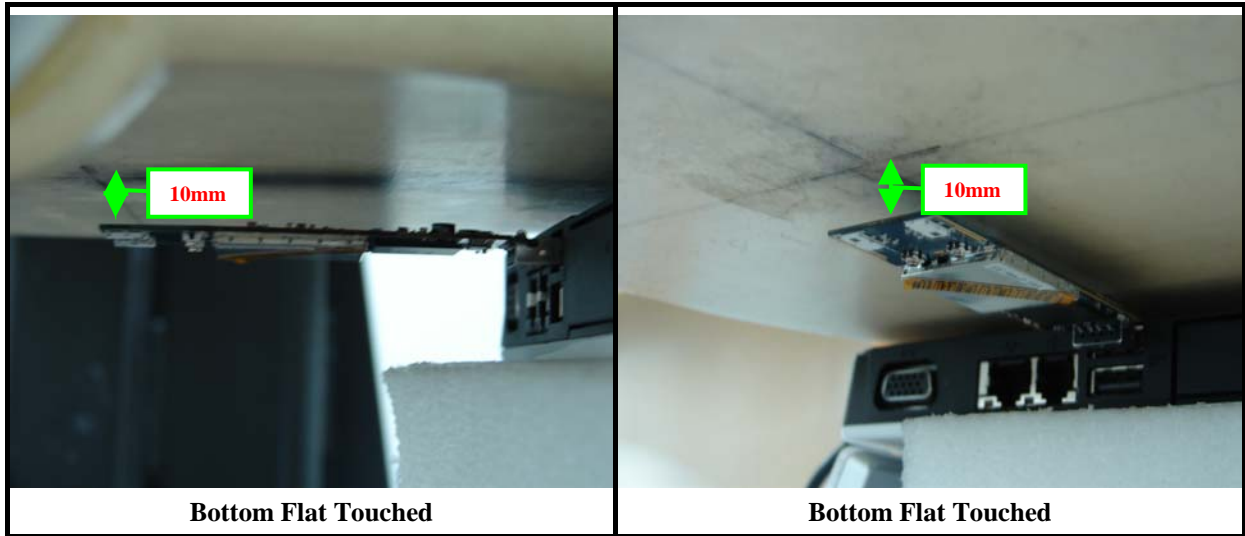


Bottom Flat Touched

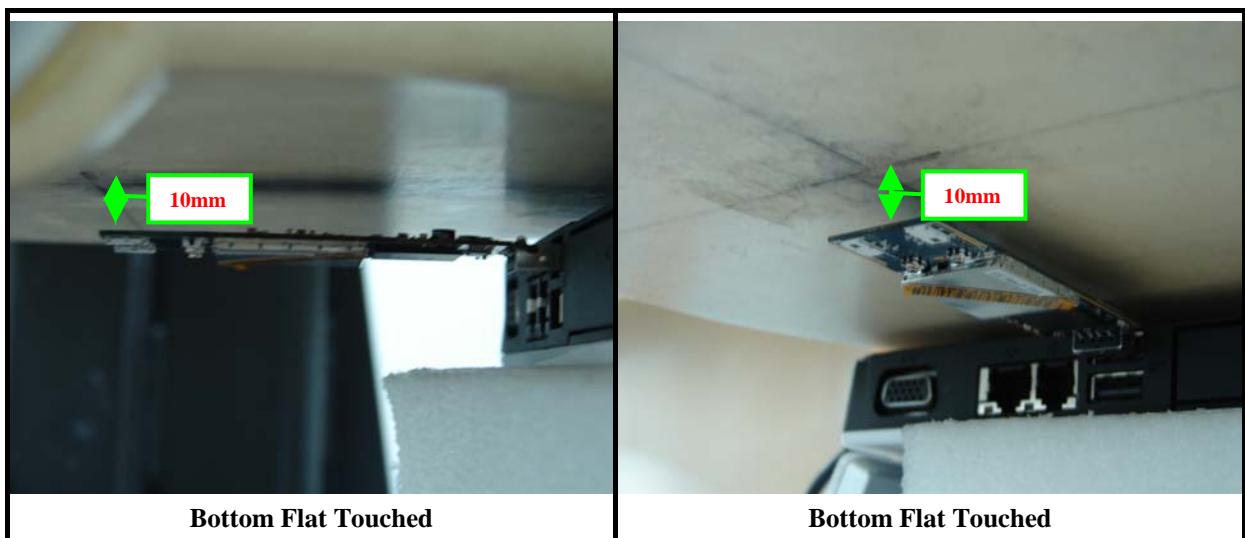


Bottom Flat Touched

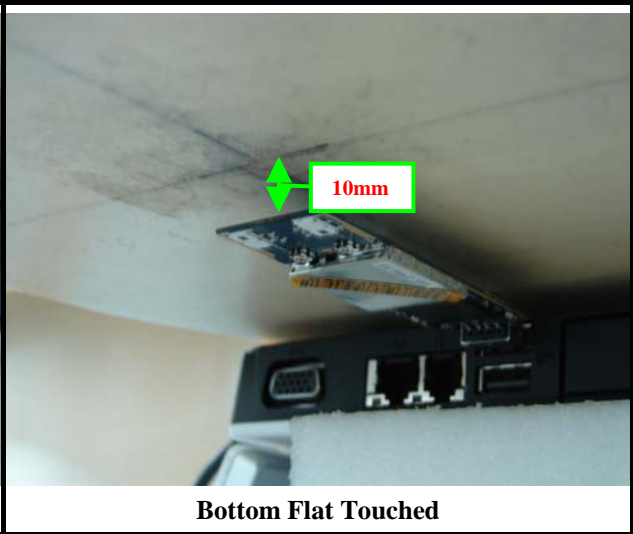
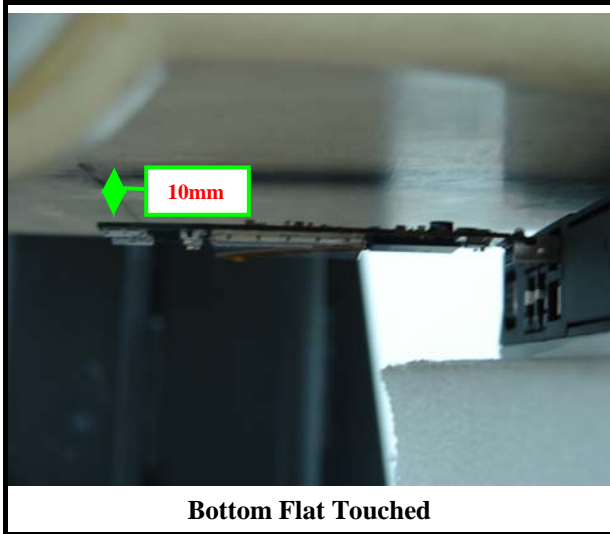
Body position Edge Touched (Dell 640m Horizontal USB port)



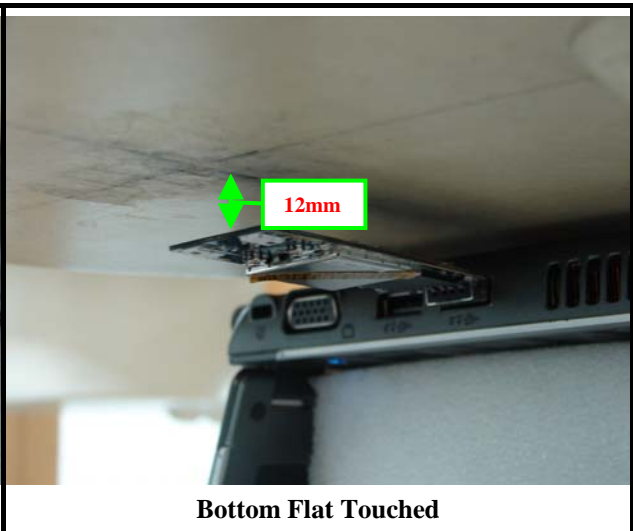
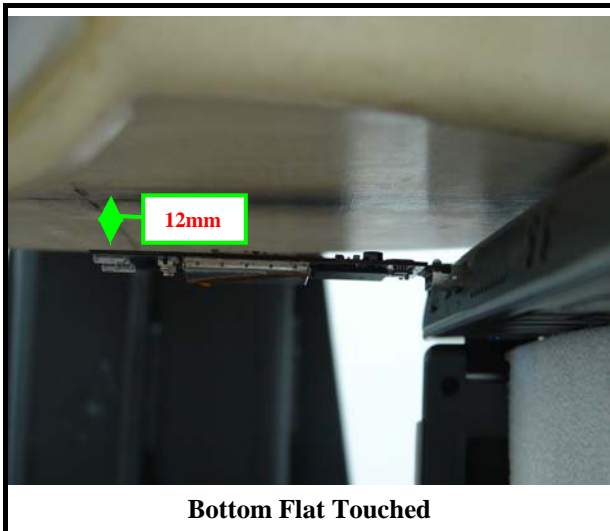
Body position Edge Touched (Dell 640m Horizontal USB port)



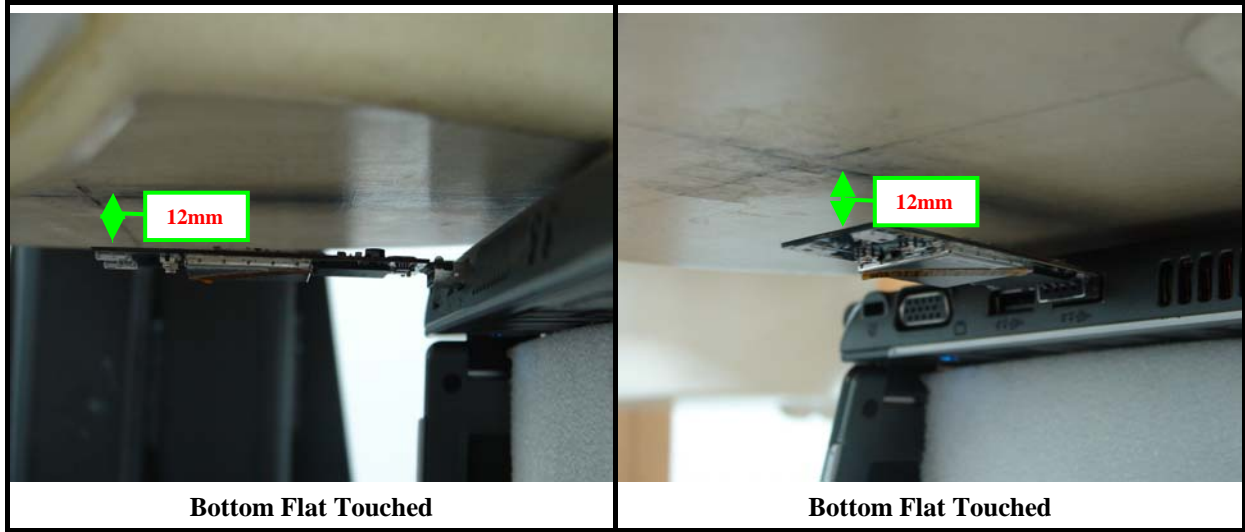
Body position Edge Touched (Dell 640m Horizontal USB port)



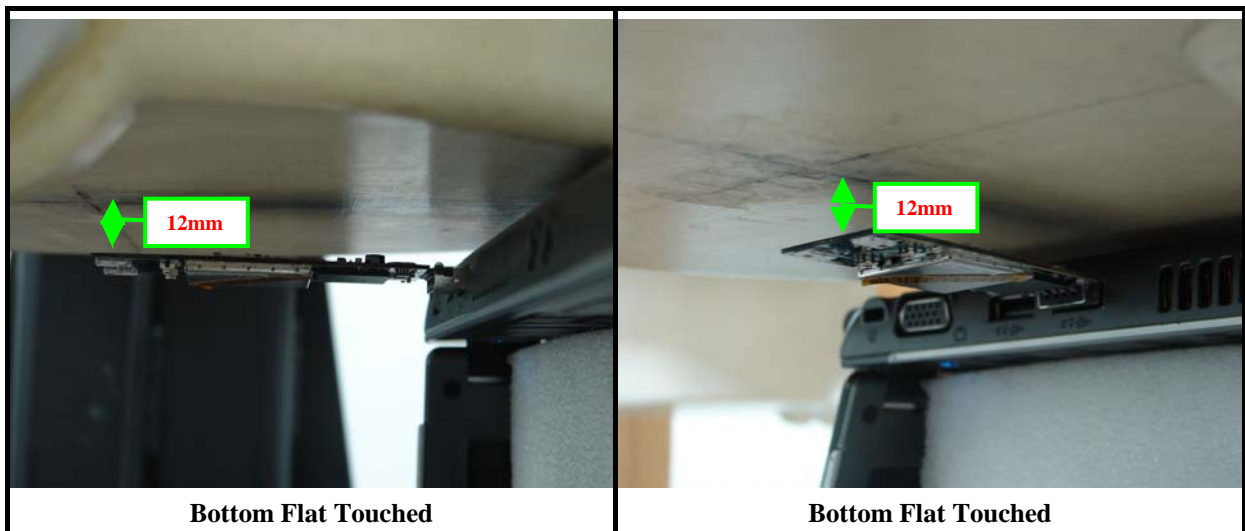
Body position Edge Touched (ASUS M5200AE Horizontal USB port)



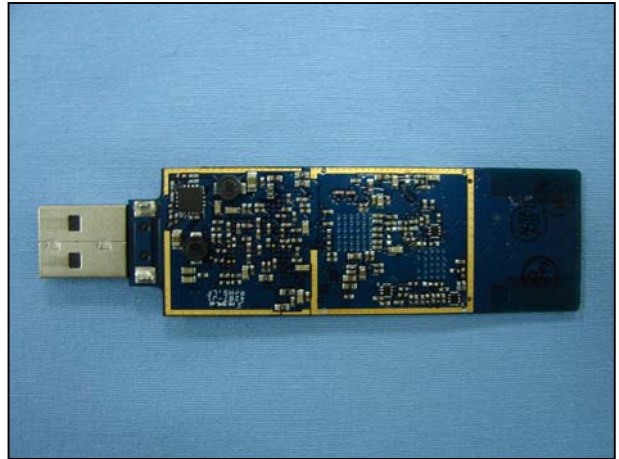
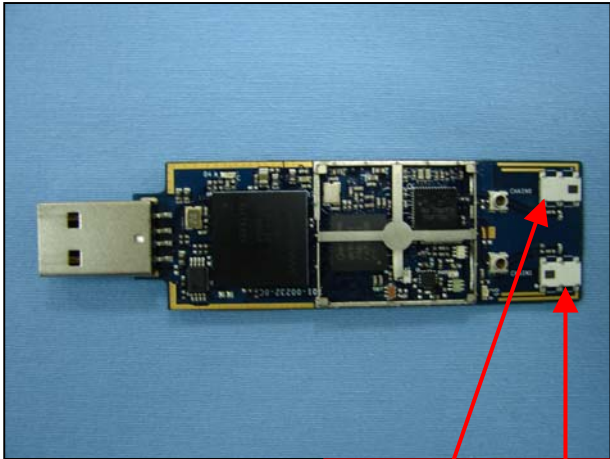
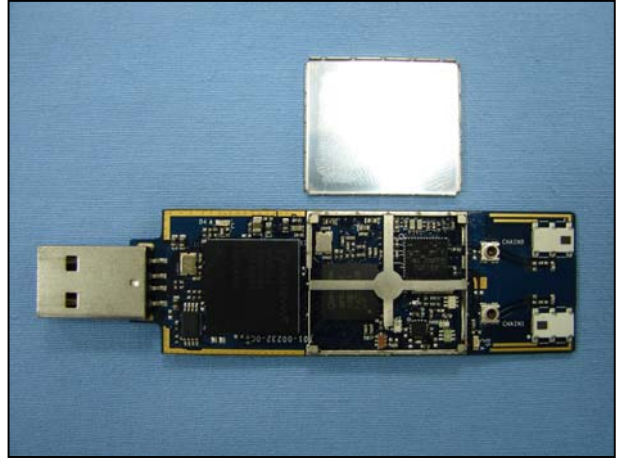
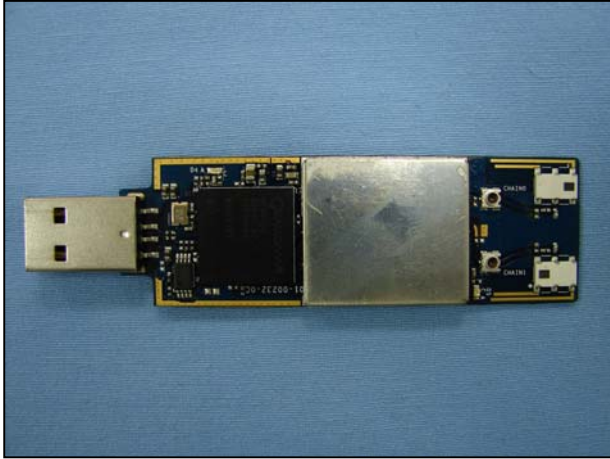
Body position Edge Touched (ASUS M5200AE Horizontal USB port)



Body position Edge Touched (ASUS M5200AE Horizontal USB port)



APPENDIX II EUT PHOTOS



CHIP antenna