

**NOTE: all antennas(RADAR, GPS, and WiFi) are sealed inside the unit housing, and are not easily accessible by customers or installation personnel.**

## **RADAR Antennas**

**MFR: InnoSent GmbH**

**P/N: IVQ-3008**

**Type: patch, there are two RX antennas and one TX antenna, each antenna is 55.96mm(W) x 23.81(H)**

**Maximum Gain: 18dBi**

**NOTE: TX and RX antennas are identical and have identical characteristics and performance**



**RADAR Antennas are part of a RADAR module, which is shown here, in its mounted location**

# GPS Antenna

MFR: Taoglas Limited

P/N: AGGP.25F.07.0060A

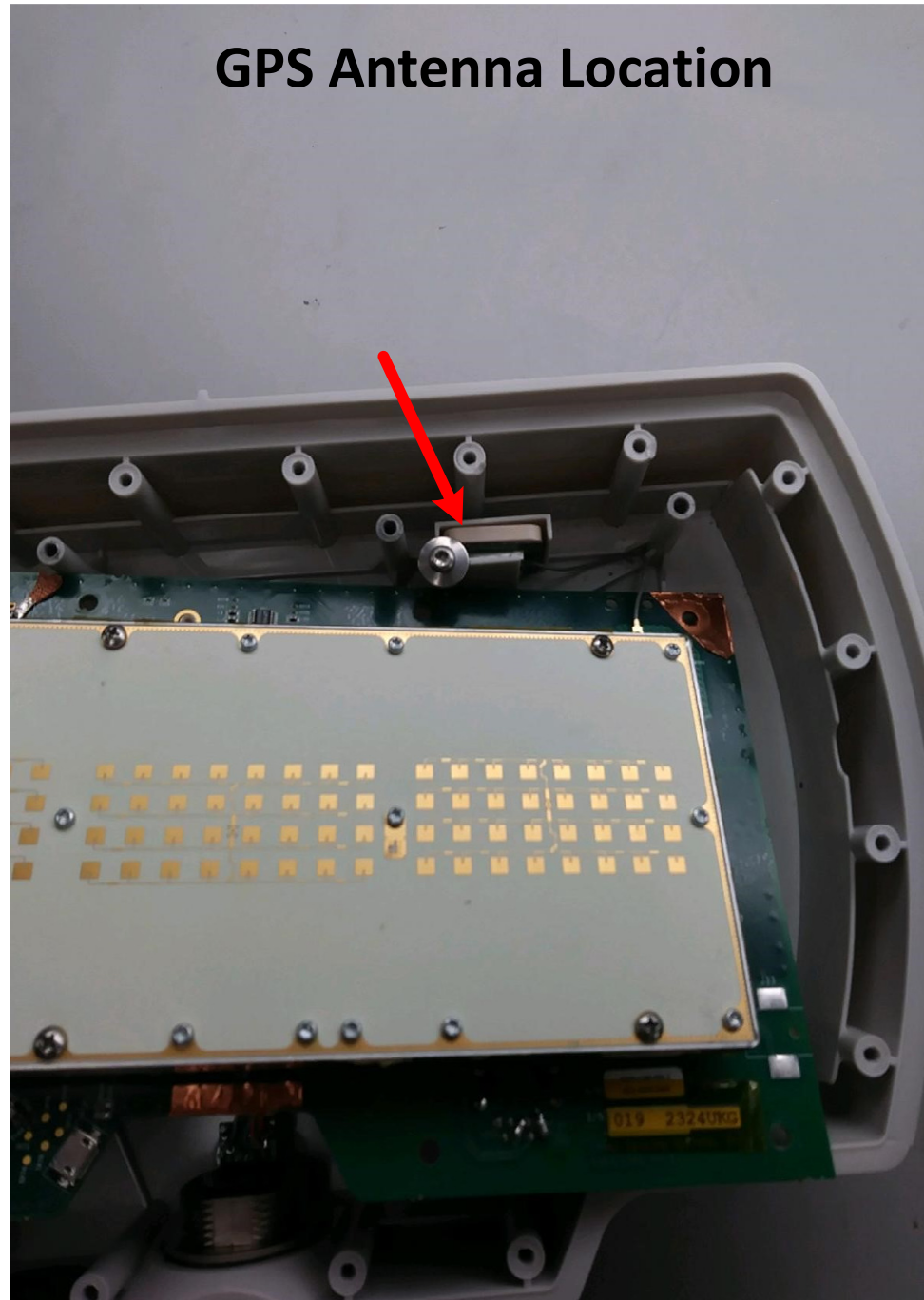
Type: ceramic patch, 25.1mm(L) x 25.1mm(W) x 7.4mm(T)

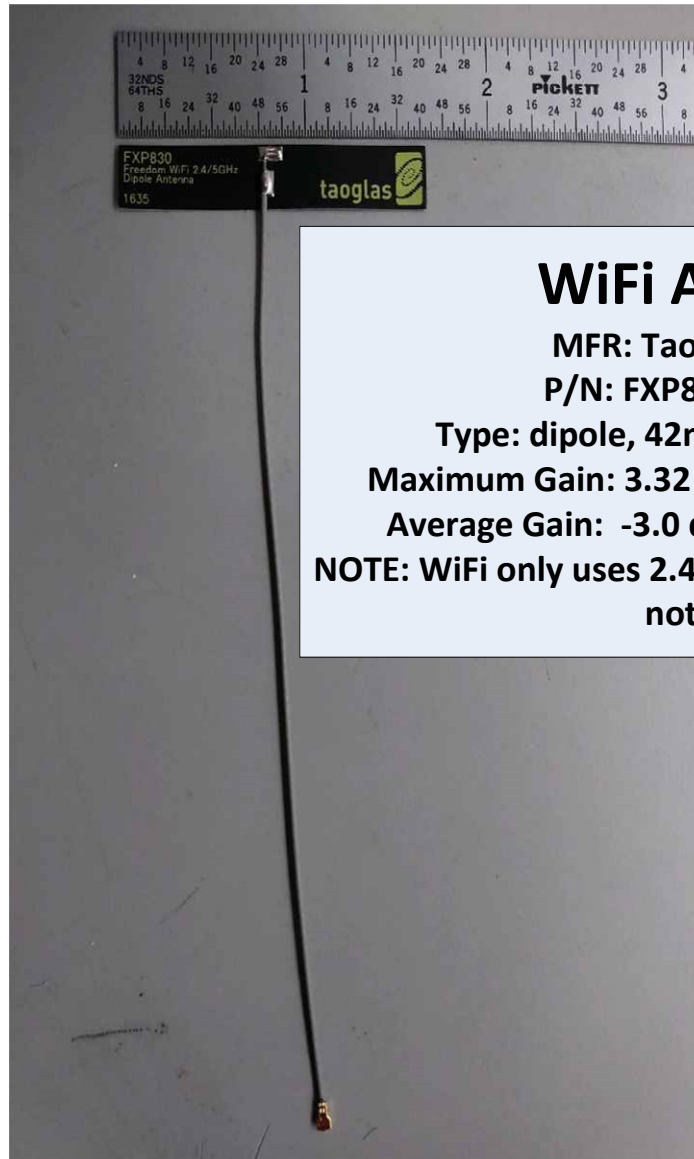
Maximum Gain at 90° : 26.5 dBic at 1575.42MHz

28 dBic at 1602MHz



## GPS Antenna Location





## WiFi Antenna

**MFR: Taoglas Limited**

**P/N: FXP830.24.0100B**

**Type: dipole, 42mm x 7mm x 0.1mm**

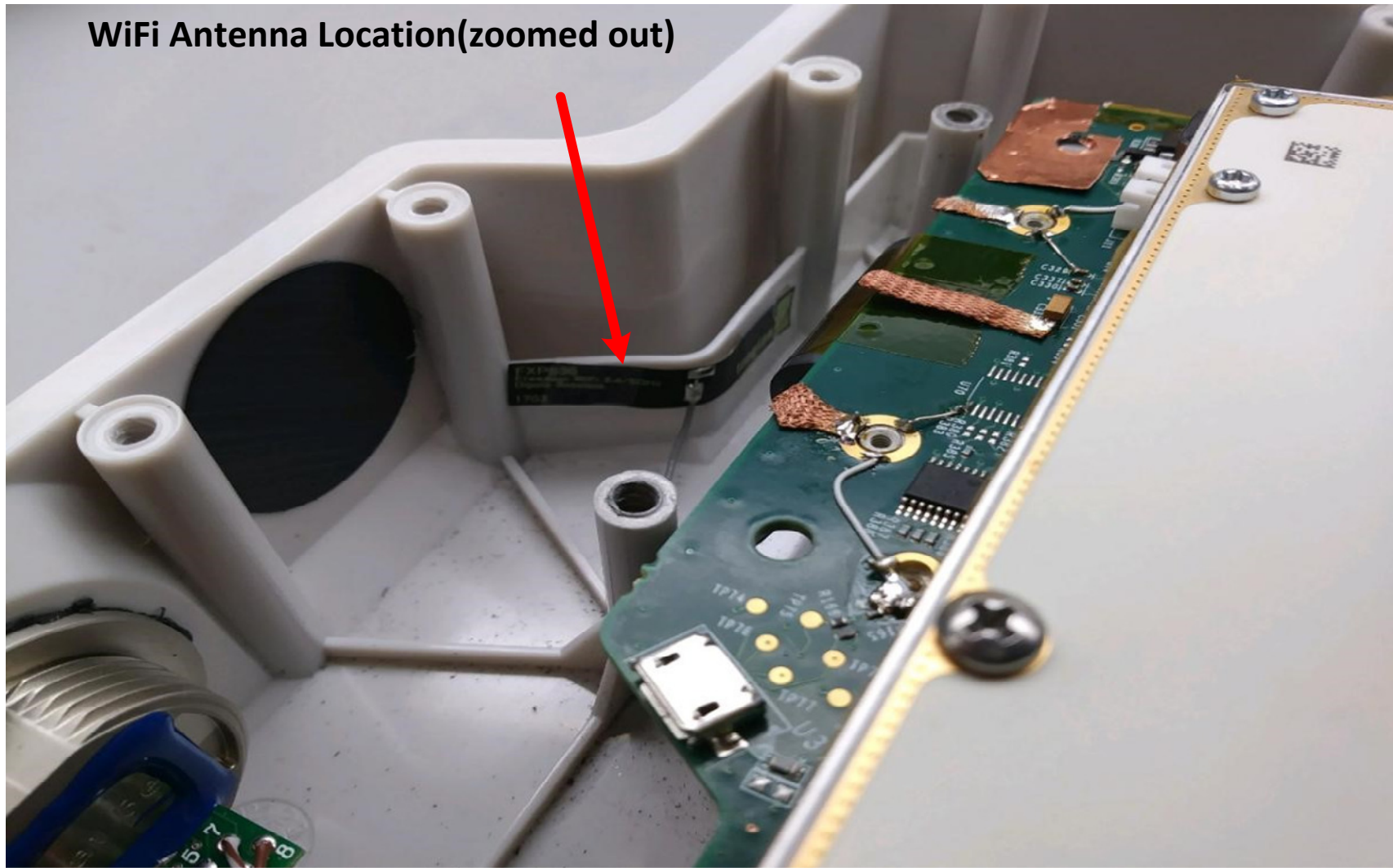
**Maximum Gain: 3.32 dBi at 2.4GHz to 2.5GHz**

**Average Gain: -3.0 dBi at 2.4GHz to 2.5GHz**

**NOTE: WiFi only uses 2.4GHz bands. 5GHz bands are not used.**



WiFi Antenna Location(zoomed out)



WiFi Antenna Location(zoomed in)

